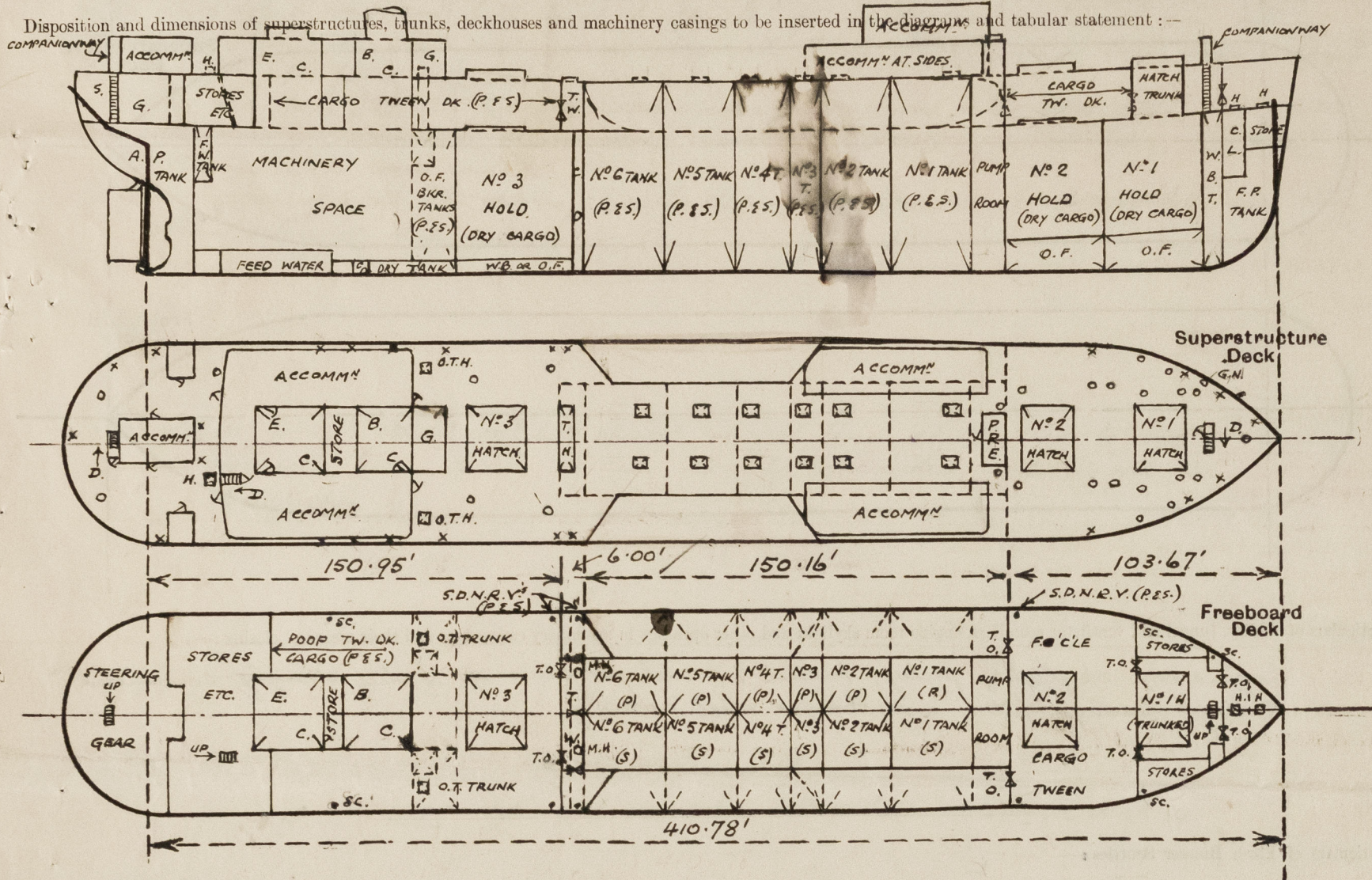


# Lloyd's Register of Shipping.

## SURVEYS FOR FREEBOARD.

### (CONDITIONS OF ASSIGNMENT.)

Ship's Name S. S. "MATADIAN" Port of Survey Sunderland  
 Official Number \_\_\_\_\_ Surveyor's Signature J. Forsyth  
 Nationality and Port of Registry British, Freetown Date of Survey During Construction.



Particulars of Superstructures, Trunks, Casings, Deckhouses.

	Coaming	Plating	Stiffeners	Spacing	End Attachments of Stiffeners	Size of Openings	Height of Sills	Height of Casings
Poop Bulkhead (SLOPING) ...	-	.50"	8x3x.40" L (Horn)	2'-6"	Bracketted at ends	✓	✓	7'-6"
Raised Quarter Deck Bulkhead (TONNAGE WELL) ...	-	.26"	4 1/2" Vert. plate flange	40"	Revelted to boundary angles	2 @ 4'-1" x 3'-1"	14"	7'-6"
NO 1 HATCH TRUNK WITHIN SUPERSTRUCTURES	-	.26"	5" x 3" x .25" OA	40"	Revelted to boundary angles + 6" to 10" to angle at top	✓	✓	7'-6"
Bridge, After Bulkhead NOT FITTED. WITH CLASS I CLOSING APPLIANCES	✓				Free at bottom			
Bridge, Forward Bulkhead ...	✓							
Forecastle Bulkhead ...	.30"	.30"	4x3x.32" OA (Horn)	2'-6"	Bracketted at ends	2 @ 4'-6" x 3'-1"	19"	7'-6"
Trunk, Aft ... BETWEEN FORECASTLE..	-	.70"	8x3 1/2" x .40" L (Horn)	2'-6"	Bracketted at ends	✓	✓	7'-6"
Trunk, Forward ... E POOP BHDS...	-		2 1/2" x 2 1/2" x .40" Vert webs in each tank (5" FL)	7'-1" to 10'-4"				
Exposed Machinery Casings on Freeboard or Raised Quarter Decks ...	✓							
Exposed Machinery Casings on Superstructure Decks ...	✓							
Machinery Casings within Superstructures not fitted with Class I Closing Appliances ...	.25/.26"	.25/.26"	4x3x.25" OA	30"-38"	Continuous at top. Revelted to ground bar 8' long at bottom	✓	✓	7'-6"
Deckhouses on Flush Deck Ships ...	✓							

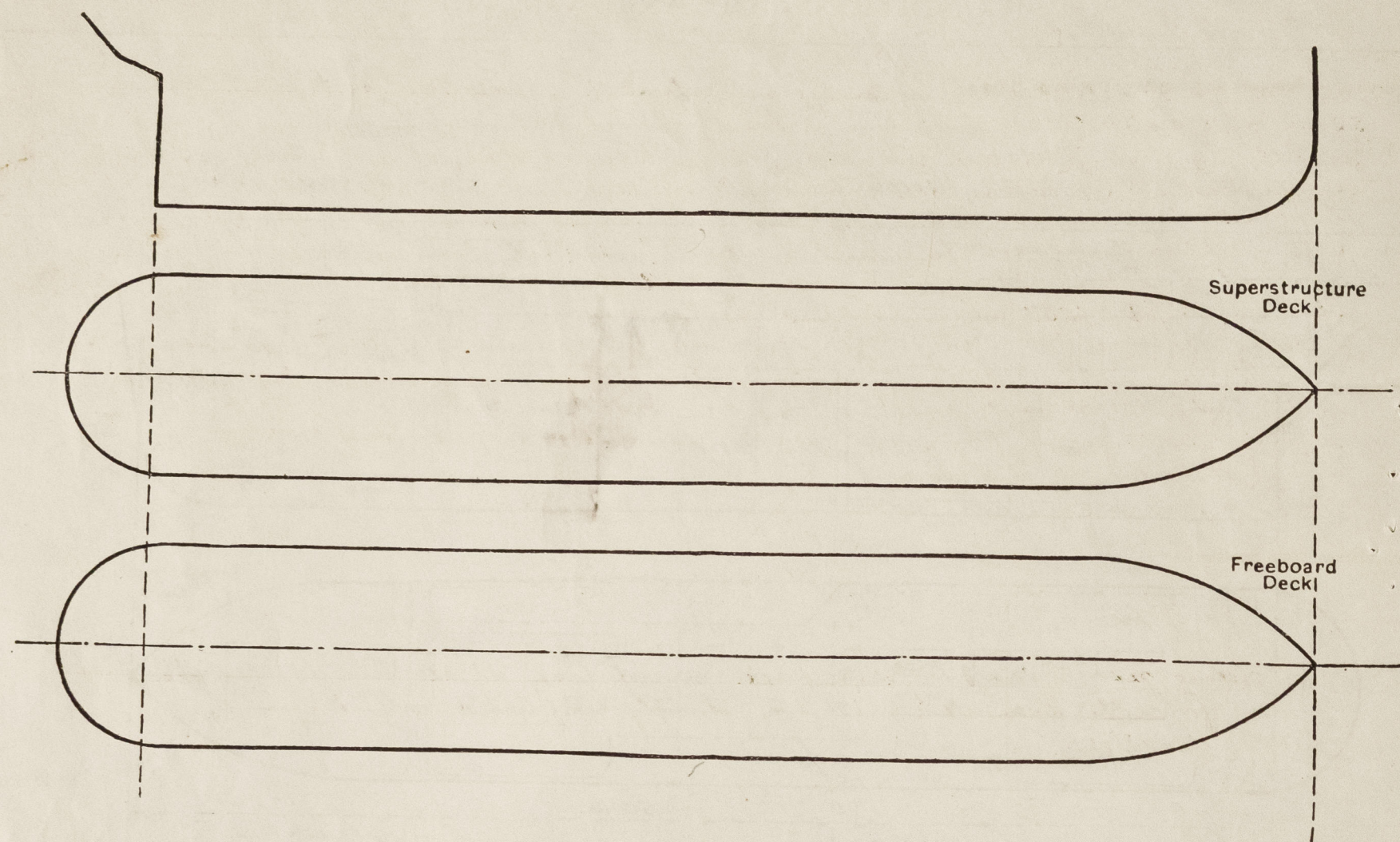
Particulars of Closing Appliances (state if capable of being manipulated from both sides).

Poop Bulkhead ...	✓
Raised Quarter Deck Bulkhead (TONNAGE WELL) ...	Portable steel plates secured by 3/4" hooked bolts spaced 13" apart. ✓
NO 1 HATCH TRUNK WITHIN SUPERSTRUCTURES	✓
Bridge, After Bulkhead NOT FITTED. WITH CLASS I CLOSING APPLIANCES	✓
Bridge, Forward Bulkhead ...	✓
Forecastle Bulkhead ...	Portable steel plates secured by 3/4" hooked bolts spaced 13" apart. ✓
Exposed Machinery Casings on Freeboard or Raised Quarter Decks ...	✓
Exposed Machinery Casings on Superstructure Decks ...	✓
Machinery Casings within Superstructures not fitted with Class I Closing Appliances ...	✓ No openings
Deckhouses on Flush Deck Ships ...	✓



# PARTICULARS OF PROTECTION TO OPENINGS, ETC.

The following diagrams should be used to indicate the positions of cargo and coaling hatchways, gangway, cargo and coaling ports, ventilators, companionways, etc., which would affect the seaworthiness of the ship:—



Particulars of fiddle, funnel and ventilator coamings, engine room skylight and other openings in machinery casing tops and their means of closing:—

Engine room skylight, fiddle, funnel & ventilator coamings of steel strongly constructed  
Fiddle openings fitted with hinged steel covers.

Particulars of Flush Bunker Scuttles:—

None.

Particulars of Companionways:—

On Fore Dk. strong steel companionway to Fore tween dk. opening 5'-0" x 2'-3"; 18" coaming, with hinged steel W.T. door (6 toggles), operated both sides.  
Pump Room Entrance (Trunk top) Plating 50" (front & sides) 30" (at end), stiffeners 7x3x33" (front & sides) 5x3x25" (at end), welded to deck & lugged or bracketed at top. Deck opening 7'-0" x 4'-9"; 2 strong steel skylight 4'-0" x 5'-0"; W.T. door (after end) 4'-0" x 2'-3"; coaming 18" (6 toggles), & operated both sides. On Poop dk strong steel companionway to Poop tween deck space aft, opening 5'-0" x 2'-3"; coaming 18" with hinged steel W.T. door (6 toggles), operated both sides. In Poop deckhouse, opening 5'-0" x 2'-0"; coamings 21" with hinged solid hardwood doors operated both sides, enclosing companionway to stores etc. aft.

Particulars of Ventilators in exposed positions on freeboard and superstructure decks:—

3 @ 9" dia, coamings 36" x 32" to F.P. spaces.  
1 @ 6" " " 18" to opening to F.P. spaces.  
4 @ 18" " " coamings 4'-6" x 4'-0" to No 1 Hold space (efficiently stayed).  
3 @ 6" " " 34" (above wood dk) x 30" to Fore & stores etc.  
4 @ 8" " " 36" x 32" to Forecastle space & alleyways.  
4 @ 24" " " 4'-6" x 4'-0" to No 1 & 2 Hold space (efficiently stayed).  
2 @ 18" " " 11'-0" x 4'-0" to Pump room (efficiently stayed).  
2 @ 24" " " 3'-0" x 4'-0" to No 3 Hold space.  
2 @ 18" " " 3'-0" x 4'-0" to No 3 " "  
2 @ 6" G.N.V. 18" to opening to after end No 3 hold space.  
2 @ 9" " " coaming 30" x 32" to steering gear space.

All ventilators fitted with wood plugs & canvas covers.

Particulars of Air Pipes in exposed positions on freeboard, raised quarter, or superstructure decks:—

To peaks, D.B. feed water, oil fuel & water ballast tanks, D.B. Cofferdam & dry tank, deep O.F. bunker & settling tanks, fresh water tanks & rudder trunk, 2", 2 1/2", 3" & 4" dia. openings 18" & 30" above Forecastle & Poop decks.

Air pipes fitted with gauges as required & wood plugs &/or canvas covers.

Particulars of Gangway Cargo and Coaling Ports:—

Matadian.

None

Particulars of Scuppers and Sanitary Discharge Pipes:—

In tonnage well, forecastle & poop tween dk. cargo spaces 1-5" dia., S.D.N.R. valve scupper (A.E.S.) discharging overboard, operated from accessible positions on poop & forecastle dks, and fitted with indicators. In poop tween dk. space abreast casings 1-3" dia., scupper pipe (P.E.S.) led to E.R. bilges, & fitted with weighted lever cocks at lower ends. In forecastle tween dk. store spaces (3 off), and in refrigerated storerooms aft (3 off), 2" dia. scupper pipes discharging overboard below level of upper dk., fitted with brass automatic non-return storm valves at ship's sides and screwed plugs with chain attachments at inner ends, (refrigerated store scupper pipes fitted with water sealed traps). In steering gear space (3 off) 2 1/2" dia. scupper pipes discharging overboard below level of upper deck, fitted with brass automatic non-return storm valves at ship's sides, & screwed plugs with chain attachments at inner ends. Sanitary discharges all from spaces above the upper deck, fitted with brass automatic non-return storm valves at ship's sides.

Particulars of Side Scuttles:—

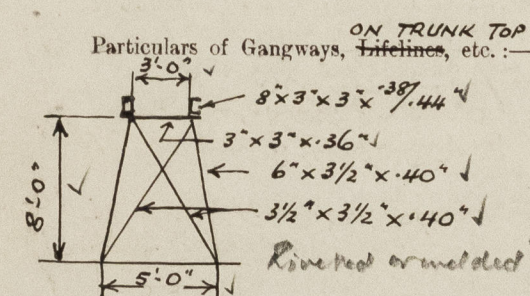
To steering gear & store & workshop spaces in poop tween dk. aft and to store spaces etc. in forecastle tween deck, 10" dia., strongly constructed with hinged C.S. deadlights.

Vertical distance of Sill of lowest Side Scuttle above top of keel (at 43'-7" forward of A.P.) 37'-0"

NOTE:— No side scuttles fitted below freeboard deck.

Particulars of Guard Rails:—

On upper, poop, trunk and forecastle decks strong steel stanchions, 3'-6" in height above deck, spaced about 5'-0" apart with 2 rails at upper deck and 3 rails elsewhere. (Portable gates in way of cargo hatchways).



Fore & aft gangway from Poop to Bridge house, 8'-0" in height above trunk top, supports spaced approx. 14'-0" apart; fore & aft bracing 2 off; .25" chequer plating; strong steel stanchions 3'-6" in height spaced about 5'-0" apart with 2 rails. (Portable section of gangway in way No 3 cargo hatchway).

Particulars of Freeing Arrangements. (see also Scuppers)

	Length of Bulwark	Height of Bulwark	Size of Freeing Ports	Number each side	Area each side	Rule area each side
TONNAGE After Well A.T. FOR END OF POOP	6-0'	✓	5" dia, S.D.N.R. valve operated from poop dk.	1	✓	✓
Forward Well	✓			✓		

State position of each freeing port ... After Well:— ✓

(F. and A. position and height above deck edge) Forward Well:— ✓

State whether the freeing ports are fitted with shutters, bars, or rails, and give particulars of such:— ✓

Additional area where sheer is less than standard.



# PARTICULARS OF PROTECTION TO OPENINGS, ETC.

HATCHWAYS ON FREEBOARD AND SUPERSTRUCTURE DECKS.											
FREEBOARD DECK											
FO'LE DECK											
POOP DECK											
Description of Hatchway	Access to Chain Pl.	Access to F.P. Stores	Nº 2H.	Nº 3H.	Access to Midship C.D.	Nº 1H.	Nº 2H.	Nº 3H.	Access to Stores aft.	To O.P. BUNKERS	
Dimensions of Hatchway	2'-0" x 2'-2"	3'-4" x 2'-7"	22'-0" x 20'-0"	27'-6" x 20'-0"	2'-0" x 1'-7"	20'-3" x 20'-0"	22'-0" x 20'-0"	27'-6" x 20'-0"	3'-1" x 2'-9"	2'-9" x 2'-6"	
COAMINGS	Height above Deck	9"	9"	9"	9"	33"	31"	31"	9"	30"	
	Thickness	.38"	.38"	.40"	.40"	.44"	.44"	.44"	.40"	.44"	
	Sides	✓	✓	✓	✓	✓	✓	✓	✓	✓	
	Stiffeners	✓	✓	✓	✓	✓	✓	✓	✓	✓	
HATCH BEAMS	Brackets, Stays	✓	✓	✓	✓	✓	✓	✓	✓	✓	
	Number						3	4			
	Spacing						5'-6"	5'-6"			
	Scantling and Sketch						19" x 37"	15" x 35"			
FORE AND AFTERS	Bearing Surface						4" x 3" x .44"	4" x 3" x .44"			
	Number										
	Spacing										
	Unsupported Lengths										
HATCH COVERS	Scantling* and Sketch										
	Bearing Surface										
	Material	W. Wood	W. Wood	Steel MacGregor	Steel	Steel MacGregor	W. Wood	W. Wood	Steel	Steel	
	Thickness	3"	3"	.31" top plating	.40"	.30" top plating	3"	3"	.40"	.40"	
Spacing of Cleats	How fitted	Thwartship	F. & A.	Thwartship	Hinging	Thwartship	F. & A.	F. & A.	Hinging	Hinging	
	Bearing Surface	2 1/2"	2 1/2"	on wheels	5 toggles	on wheels	3" x 4"	3" x 4"	10 toggles	8 toggles	
	Number of Tarpaulins	1	1	✓	✓	✓	2	2	✓	✓	
				✓	✓	✓					

\*Are wood fore and afters steel shod at all bearing surfaces? ☒  
 Are battens and wedges efficient and in good condition? ☒  
 Are tarpaulins in good condition and in accordance with rule requirements? ☒  
 Are lashings provided in accordance with rule requirements? ☒ (locking bars)

NOTE:- Ends of wood covers protected by galv. steel bands efficiently secured.

Particulars of any special features:- OTHER HATCHWAYS:-

O.T. HATCHES ON TRUNK TOP TO CARGO TANKS:- 12 off - 6'-0" x 4'-0", coamings 30" x .40" with 3" x 3" x .30" side stiffeners, with hinged steel O.T. covers .50" thk. with 2 - 4" x 3" x .40" stiffeners, and covers secured by 2 hinges & 16 toggles.  
 TONNAGE HATCH ON POOP DK:- 4'-7" x 20'-0", coamings 9" x 3 1/2" x .44" L; 3" thk. wood covers fitted F. & A., bearing surface 3", covers secured by ring bolts and lashings.

Endorsement at first survey and at surveys for renewal of Certificate:-

The fittings and appliances are in accordance with the particulars shown on this form (or as now modified) and are in good condition.

