

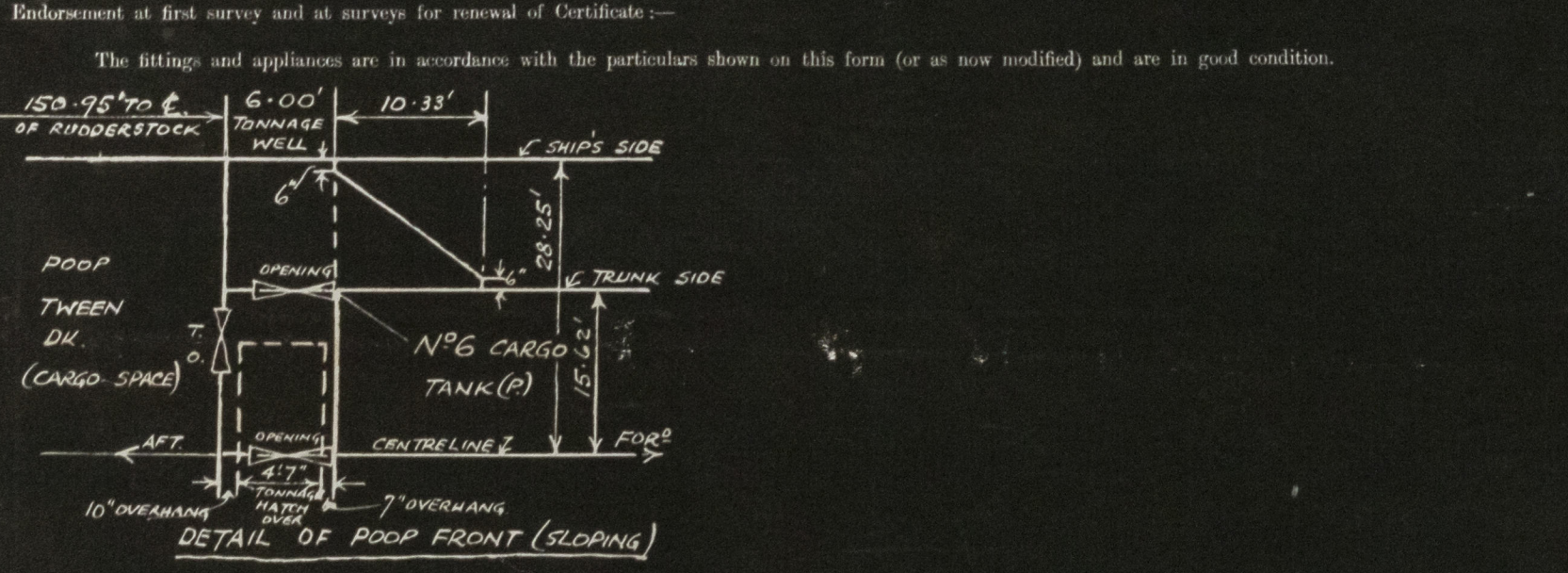
PARTICULARS OF PROTECTION TO OPENINGS, ETC.

Description of Hatchway	HATCHWAYS ON FREEBOARD AND SUPERSTRUCTURE DECKS.									
	Access to Chain Lbr.	Access to F.P. Store	Nº 2H.	Nº 3H.	Access to Midship C.D.	Nº 1H.	Nº 2H.	Nº 3H.	Access to Store Qtr.	To O.B. BUNKERS
Dimensions of Hatchway	2'0" x 2'2"	3'4" x 2'7"	22'0" x 20'0"	27'6" x 26'0"	2'0" x 1'7"	20'3" x 20'0"	22'0" x 20'0"	27'6" x 26'0"	3'1" x 2'9"	2'9" x 2'6"
COAMINGS	Height above Deck ... 9"	9"	9" x 3 1/2" x 40" E	9"	33"	31"	11" x 3 1/2" x 7 1/8"	31"	9"	30"
	Thickness ... 3/8"	3/8"		40"	44"	44"	9" x 3 1/2" x 7 1/8" COAMINGS	40"	40"	44"
	Sides ...									
	Stiffeners ...		40" E	40" E	40" E	40" E	40" E	40" E	40" E	40" E
	Brackets, Stays ...		40" E	40" E	40" E	40" E	40" E	40" E	40" E	40" E
HATCH BEAMS	Number ...									
	Spacing ...									
	Scantling and Sketch ...									
	WEB PLATES									
	TOP & BOTTOM ANGLES									
	Bearing Surface ...									
FORE AND AFTERS	Number ...									
	Spacing ...									
	Unsupported Lengths ...									
	Scantling and Sketch ...									
	Bearing Surface ...									
HATCH COVERS	Material ...	W. Wood	W. Wood	Steel MacGregor Patent	Steel	Steel MacGregor Patent	W. Wood	W. Wood	Steel	Steel
	Thickness ...	3"	3"	3 1/2" top plating	40"	30" top plating	3"	3"	40"	40"
	How fitted ...	Thwartship	F. & A.	Thwartship	Hung	Thwartship	F. & A.	F. & A.	Hung	Hung
	Bearing Surface ...	2 1/2"	2 1/2"	on wheels	5 Clogges	on wheels	3" x 8 1/2"	3" x 8 1/2"	10 Clogges	8 Clogges
Spacing of Cleats	15"	24"					24"	24"		
Number of Tarpaulins	1	1					2	2		

*Are wood fore and afters steel shod at all bearing surfaces? ☒
 Are battens and wedges efficient and in good condition? ☒
 Are tarpaulins in good condition and in accordance with rule requirements? ☒
 Are lashings provided in accordance with rule requirements? ☒ (locking bars)

NOTE:- Ends of wood covers protected by galv. steel bands efficiently secured.

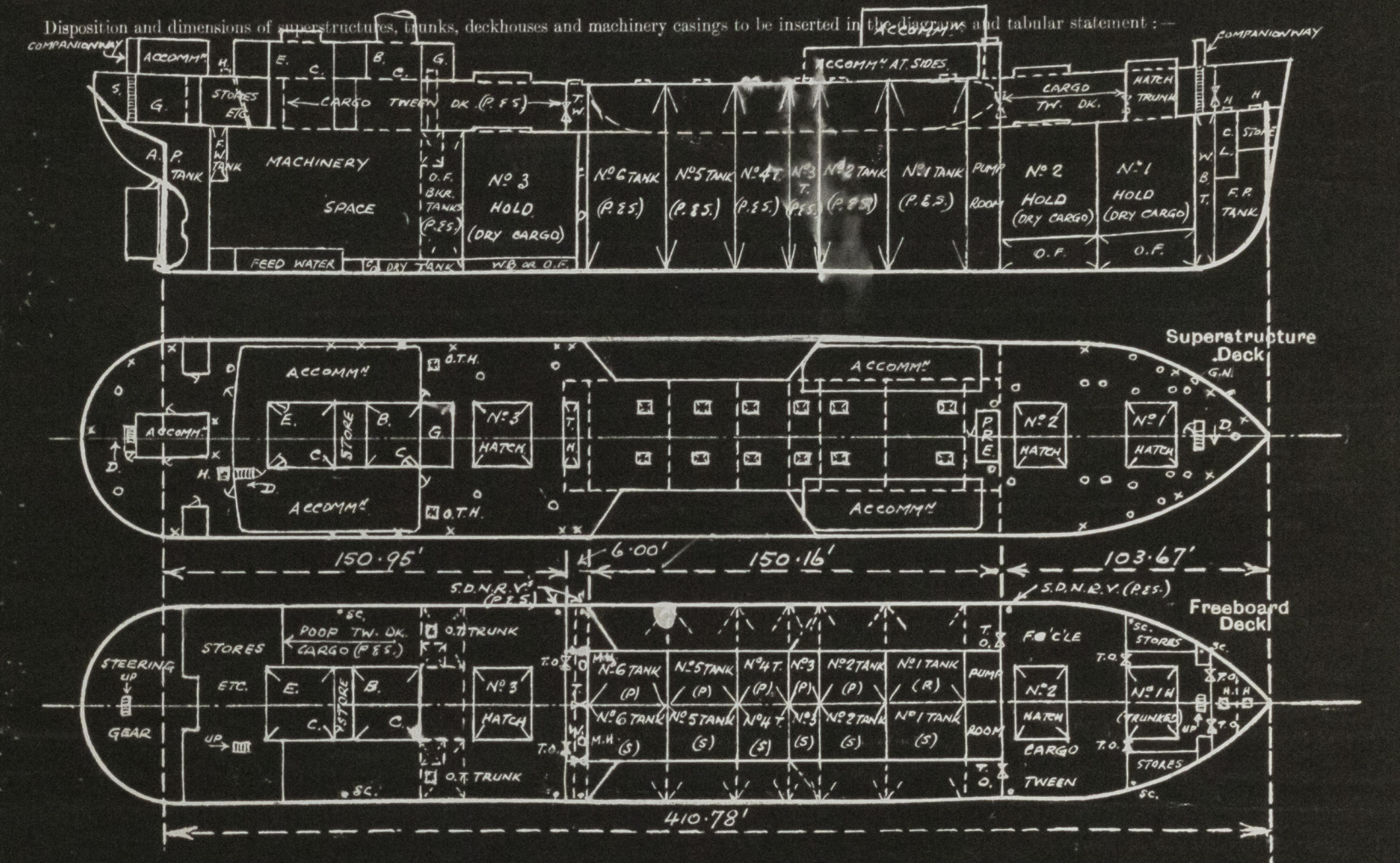
OTHER HATCHWAYS:-
 O.T. HATCHES ON TRUNK TOP TO CARGO TANKS:- 12 off - 6'0" x 4'0", coamings 30" x 40" with 3" x 3" x 30" side stiffeners, with lugged steel O.T. covers .50" E.L.R. with 2- 4" x 3" x 40" stiffeners, and covers secured by 2 hinges & 16 Clogges.
 TONNAGE HATCH ON POOP DK:- 4'7" x 20'0", coamings 9" x 3 1/2" x 44" E; 3" E.L. wood covers fitted F. & A., bearing surface 3", covers secured by ring bolts and lashings.



pt. C.11.

Lloyd's Register of Shipping. SURVEYS FOR FREEBOARD. (CONDITIONS OF ASSIGNMENT.)

Ship's Name *S. S. "MATADIAN"* Port of Survey *Sunderland*
 Official Number *185028* Surveyor's Signature *J. Forsyth*
 Nationality and Port of Registry *British, Freetown* Date of Survey *During Construction.*



Particulars of Superstructures, Trunks, Casings, Deckhouses.								
	Coaming	Plating	Stiffeners	Spacing	End Attachments of Stiffeners	Size of Openings	Height of Sills	Height of Casings
Poop Bulkhead (SLOPING)	-	.50"	8" x 3" x 40" E (Horn)	2'6"	Bracketted at ends	✓	✓	7'6"
Poop Bulkhead (WELL)	-	.26"	4 1/2" Vert. plate flange	40"	Bracketted to boundary angles	2 @ 4'1" x 3'1"	14"	7'6"
Nº1 HATCH TRUNK WITHIN SUPERSTRUCTURES	-	.26"	5" x 3" x 25" O.A.	40"	Bracketted to boundary angles	1 @ 4'1" x 3'1"	✓	7'6"
Bridge, Forward Bulkhead	✓							
Forecastle Bulkhead	✓	.30"	4 1/2" x 3" x 32" O.A. (Horn)	2'6"	Bracketted at ends	2 @ 4'6" x 3'1"	19"	7'6"
Trunk, Aft	✓	.70"	8" x 3 1/2" x 40" E (Horn)	2'6"	Bracketted at ends	✓	✓	7'6"
Trunk, Forward	✓		5" x 3" x 25" O.A.	40"	Bracketted at ends	✓	✓	7'6"
Exposed Machinery Casings on Freeboard or Raised Quarter Decks	✓							
Exposed Machinery Casings on Superstructure Decks	✓							
Machinery Casings within Superstructures not fitted with Class I Closing Appliances	✓	.25/.26"	25/.26" 4" x 3" x 25" O.A.	30"-38"	Continuous at top, bracketted to ground bars & angle at bottom	✓	✓	7'6"
Deckhouses on Flush Deck Ships	✓							

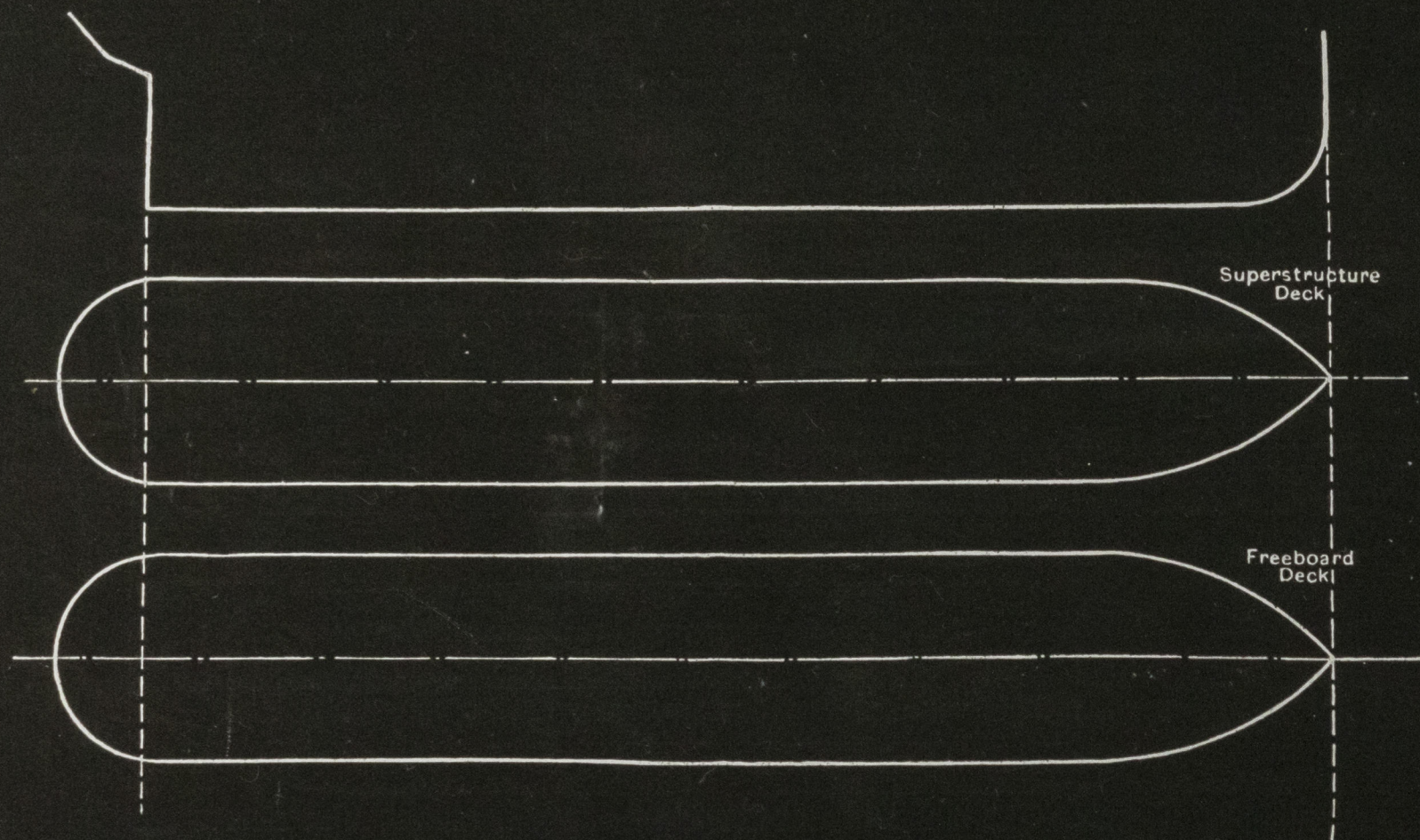
Particulars of Closing Appliances (state if capable of being manipulated from both sides).								
Poop Bulkhead	✓							
Poop Bulkhead (WELL)	✓							
Nº1 HATCH TRUNK WITHIN SUPERSTRUCTURES	✓							
Bridge, Forward Bulkhead	✓							
Forecastle Bulkhead	✓							
Exposed Machinery Casings on Freeboard or Raised Quarter Decks	✓							
Exposed Machinery Casings on Superstructure Decks	✓							
Machinery Casings within Superstructures not fitted with Class I Closing Appliances	✓							
Deckhouses on Flush Deck Ships	✓							

Portable steel plates secured by 3/4" hooked bolts spaced 13" apart.

No openings.

PARTICULARS OF PROTECTION TO OPENINGS, ETC.

The following diagrams should be used to indicate the positions of cargo and coaling hatchways, gangway, cargo and coaling ports, ventilators, companionways, etc., which would affect the seaworthiness of the ship:—



Particulars of fiddle, funnel and ventilator coamings, engine room skylight and other openings in machinery casing tops and their means of closing:—

Engine room skylight, fiddle, funnel & ventilator coamings of steel strongly constructed
Fiddle openings fitted with hinged steel covers. ✓

Particulars of Flush Bunker Scuttles:—

None.

Particulars of Companionways:— On Fore'sle Dk. strong steel companionway to Fore'sle tween dk., opening 5'-0" x 2'-3", (18" coaming, with hinged steel W.T. door (6 toggles), operated both sides. ✓
Pump Room Entrance (Trunk top) Plating 50" (front & sides) 30" (at end), stiffeners 7 x 3 x 33" (front & sides) 5 x 3 x 25" (at end), welded to deck & lugged or bracketed at top. Deck opening 7'-0" x 4'-9", 2 strong steel skylight 4'-0" x 5'-0", W.T. door (after end) 4'-0" x 2'-3", coaming 18" (6 toggles), & operated both sides. ✓
On Poop dk strong steel companionway to poop tween deck space aft, opening 5'-0" x 2'-3", coaming 18", with hinged steel W.T. door (6 toggles), operated both sides. ✓
In Poop deckhouse, opening 5'-0" x 2'-0", coamings 21", with hinged solid hardwood door operated both sides, enclosing companionway to stores etc. aft. ✓

Particulars of Ventilators in exposed positions on freeboard and superstructure decks:—

3 @ 9" dia, coamings 36" x 32" to F.P. spaces. ✓
1 @ 6" " " 18" to opening to F.P. spaces. ✓
4 @ 18" " " coamings 4'-6" x 4'-0" to No 1 Hold space. (efficiently stayed) ✓
3 @ 6" " " 34" (above wood d) x 30" to Fore'sle stores etc. ✓
4 @ 8" " " 36" x 32" to Forecastle space & alleyways ✓
4 @ 24" " " 4'-6" x 4'-0" to No 1 & 2 Hold space (efficiently stayed) ✓
2 @ 18" " " 11'-0" x 4'-0" to Pump room (efficiently stayed) ✓
2 @ 24" " " 3'-0" x 4'-0" to No 3 Hold space. ✓
2 @ 18" " " 3'-0" x 4'-0" to No 3 " " ✓
2 @ 6" G.N.V. 18" to opening to after end No 3 hold space. ✓
2 @ 9" " " coamings 30" x 32" to Steering gear space. ✓

All ventilators fitted with wood plugs & canvas covers. ✓

Particulars of Air Pipes in exposed positions on freeboard, raised quarter, or superstructure decks:—

To peaks, D.B. feed water, oil fuel & water ballast tanks, D.B. Cofferdam & dry tank, deep O.F. bunker & settling tanks, fresh water tanks & rudder trunk, 2", 2 1/2", 3" & 4" dia., openings 18" & 30" above Forecastle & Poop decks. ✓

Air pipes fitted with gauge, as required & wood plugs &/or canvas covers. ✓

Particulars of Gangway Cargo and Coaling Ports:—

None

Matadian.

Particulars of Scuppers and Sanitary Discharge Pipes:— In tonnage well, forecastle & poop tween dk. cargo spaces 1-5" dia., S.D.N.R. valve scupper (P.E.S.) discharging overboard, operated from accessible positions on poop & forecastle dks, and fitted with indicator. ✓
In poop tween dk. space abreast casing 1-3" dia., scupper pipe (P.E.S.) led to E.R. bilges, & fitted with weighted lever cocks at lower ends. ✓
In forecastle tween dk. store spaces (3 off), and in refrigerated storerooms aft (3 off), 2" dia. scupper pipes discharging overboard below level of upper dk., fitted with brass automatic non-return storm valves at ship's sides and screwed plugs with chain attachment at inner ends, (refrigerated store scupper pipes fitted with water sealed traps). ✓
In steering gear space (3 off) 2 1/2" dia. scupper pipes discharging overboard below level of upper deck, fitted with brass automatic non-return storm valves at ship's sides, & screwed plugs with chain attachment at inner ends. ✓
Sanitary discharges all from spaces above the upper deck, fitted with brass automatic non-return storm valves at ship's sides. ✓

Particulars of Side Scuttles:—

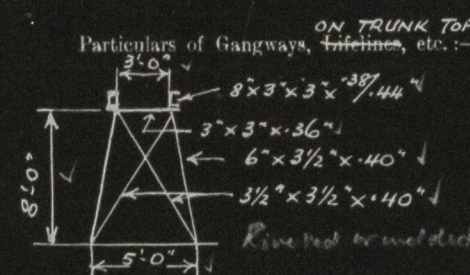
To steering gear & store & workshop spaces in poop tween dk. aft and to store spaces etc, in forecastle tween deck, 10" dia., strongly constructed with hinged C.S. deadlights. ✓

Vertical distance of Sill of lowest Side Scuttle above top of keel (at 43'-7" forward of A.P.) 37'-0"

NOTE:— No side scuttles fitted below freeboard deck. ✓

Particulars of Guard Rails:—

On upper, poop, trunk and forecastle decks strong steel stanchions, 3'-6" in height above deck, spaced about 5'-0" apart with 2 rails at upper deck and 3 rails elsewhere. (Portable gates in way of cargo hatchways). ✓



Fore & aft gangway from Poop to Bridge house, 8'-0" in height above trunk top, supports spaced approx. 14'-0" apart; fore & aft bracing 2 off; .25" chequer plating; strong steel stanchions 3'-6" in height spaced about 5'-0" apart with 2 rails (Portable section of gangway in way No 3 cargo hatchway). ✓

Particulars of Freeing Arrangements. (see also Scuppers)

	Length of Bulwark	Height of Bulwark	Size of Freeing Ports	Number each side	Area each side	Rule area each side
TONNAGE After Well AT FOR. END OF POOP	6'-0"	✓	5" dia. S.D.N.R. valve operated from poop dk.	1	✓	✓
Forward Well	✓			✓		

State position of each freeing port ... (After Well:— ✓
(F. and A. position and height above deck edge) (Forward Well:— ✓

State whether the freeing ports are fitted with shutters, bars, or rails, and give particulars of such:— ✓

Additional area where sheer is less than standard.