

22 AUG 1946

Index No. 38671
(For London Office only).

Lloyd's Register of Shipping.

SURVEYS FOR FREEBOARD.

"NAN AN" (CONDITIONS OF ASSIGNMENT.)

GRK. REPORT N° 23360.

Ship's Name **SHANJEHAN**Port of Survey **GREENOCK.**

Official Number

180970 3704-KJ

Surveyor's Signature

Kenneth Inglis.

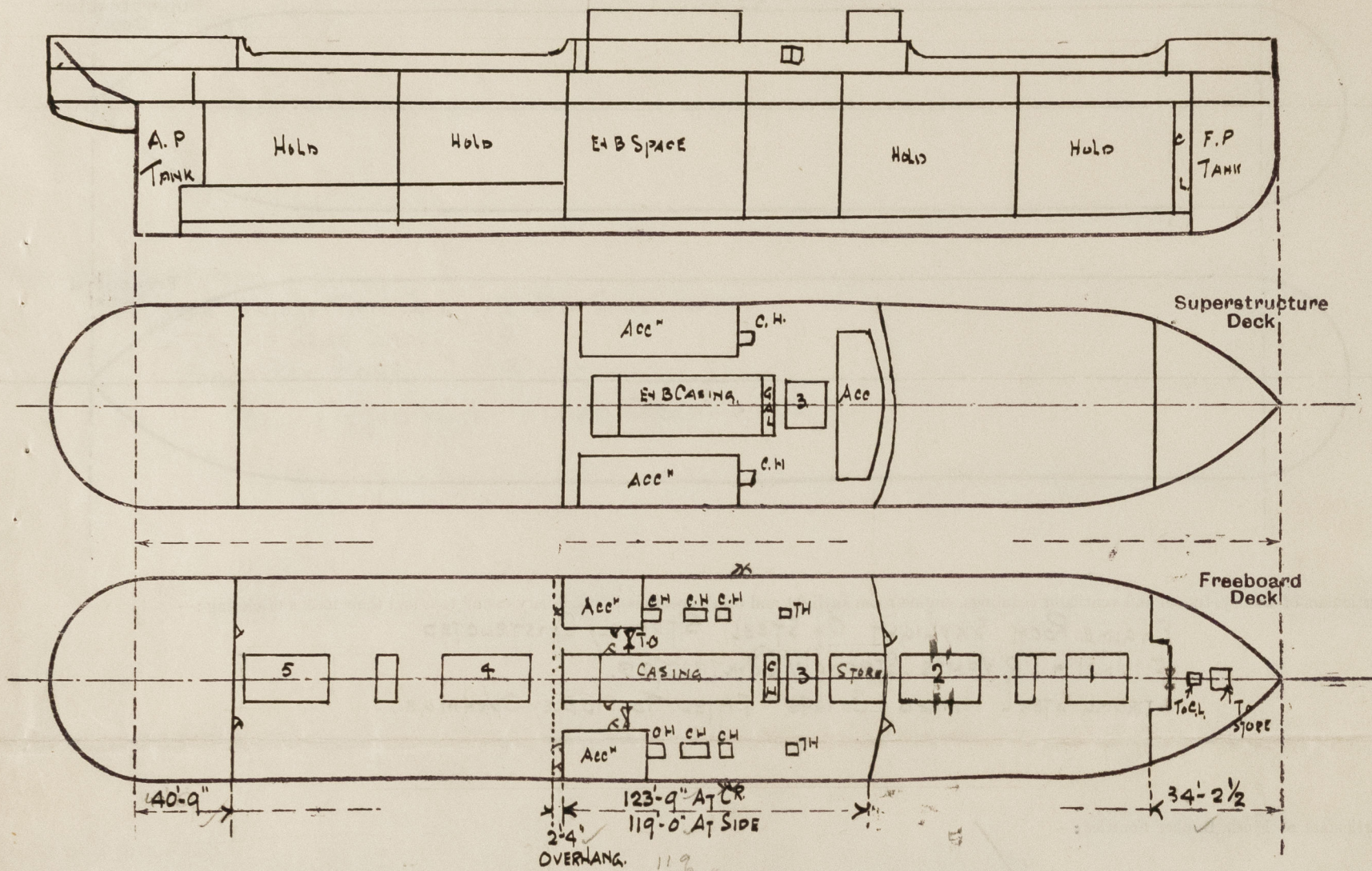
Nationality and Port of Registry

BRITISH, LONDON. PANAMA

Date of Survey

WHILE BUILDING 1946.

Disposition and dimensions of superstructures, trunks, deckhouses and machinery casings to be inserted in the diagrams and tabular statement:—



Particulars of Superstructures, Trunks, Casings, Deckhouses.

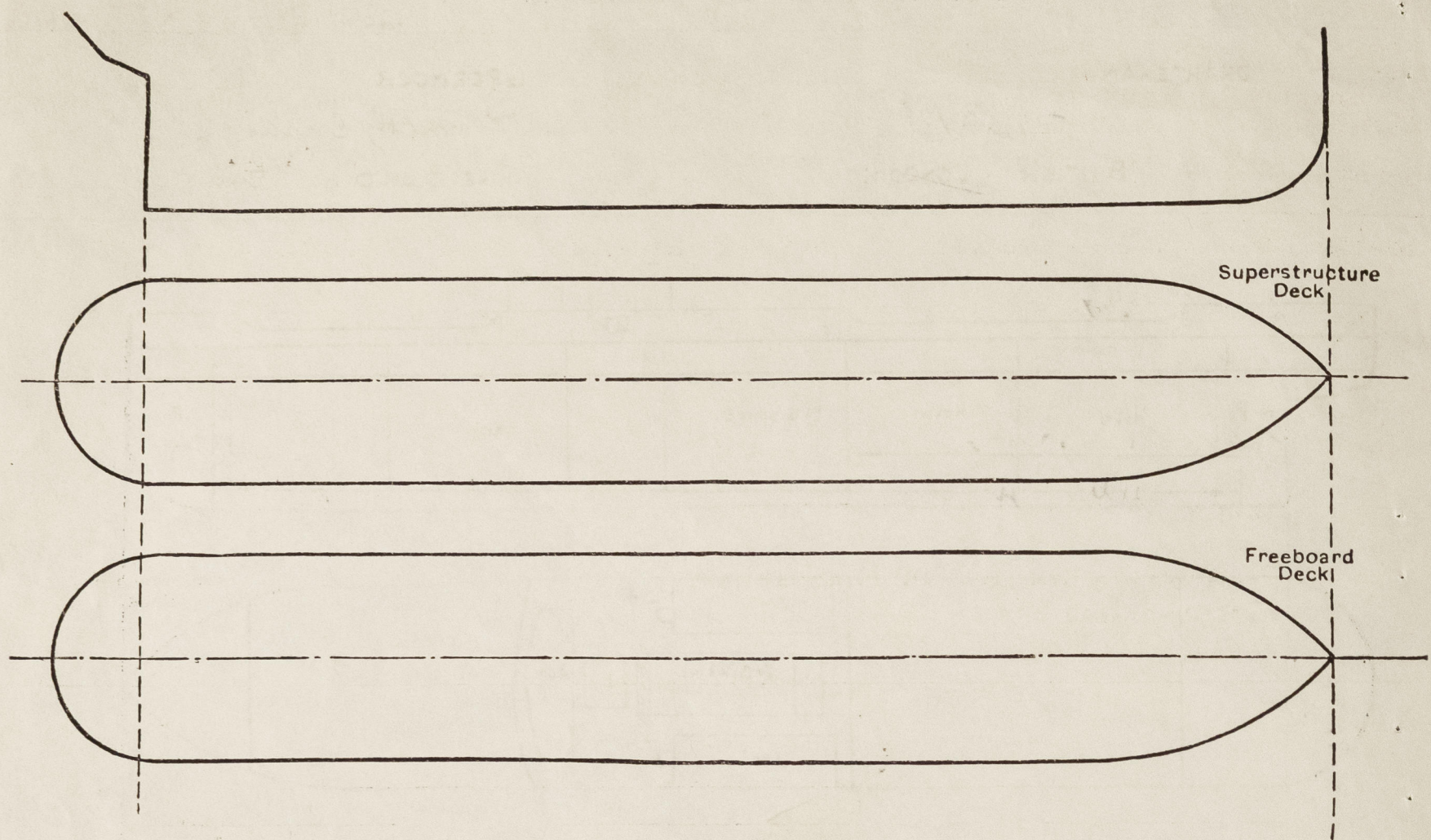
	Coaming	Plating	Stiffeners	Spacing	End Attachments of Stiffeners	Size of Openings	Height of Sills	Height of Casings
Poop Bulkhead38	.38	6x3x.450A	30"	WELDED	5'x2'-0"	18"	7'-9"
Raised Quarter Deck Bulkhead ...	✓							
Bridge, After Bulkhead30	.30	4x3x.320A.	30"	NONE	5'x3'-6"	18"	7'-9"
Bridge, Forward Bulkhead44	.44	9x3x.44 BA.	27"	WELDED	5'x3'-6"	18"	7'-9"
Forecastle Bulkhead30	.30	4x3x.320A.	25"	NONE	5'x4'	18"	7'-6"
Trunk, Aft ...	✓							
Trunk, Forward ...	✓							
Exposed Machinery Casings on Freeboard or Raised Quarter Decks34	.30	3x3x.40	30"	CONTINUOUS FROM 2ND DK TO CASING	5'x2'-6"	18"	7'-9"
Exposed Machinery Casings on Superstructure Decks34	.30	3x3x.40	24"	TOP WITH BRACKETS AT TOP.	5'x2'-6"	18"	7'-9"
Machinery Casings within Superstructures not fitted with Class I Closing Appliances30	.26	3x3x.40	30"		5'x2'-3"	18"	7'-9"
Deckhouses on Flush Deck Ships ...								

Particulars of Closing Appliances (state if capable of being manipulated from both sides).

Poop Bulkhead ...	STRONG HARDWOOD DOORS WORKABLE FROM BOTH SIDES
Raised Quarter Deck Bulkhead ...	✓
Bridge, After Bulkhead ...	STRONG HARDWOOD DOORS, 3" THICK, TONNAGE OPENING WITH CHANNELS, BOARDS FULL HEIGHT, CHANNELS RIVETED TO BHD
Bridge, Forward Bulkhead ...	HINGED STEEL WATERTIGHT DOORS WORKABLE FROM BOTH SIDES.
Forecastle Bulkhead ...	STEEL PLATE SECURED BY HOON BOLTS 15' APART: BOLTS NOT PASSING THRO' BULKHEAD.
Exposed Machinery Casings on Freeboard or Raised Quarter Decks ...	HINGED STEEL DOORS WORKABLE FROM BOTH SIDES
Exposed Machinery Casings on Superstructure Decks ...	DITTO
Machinery Casings within Superstructures not fitted with Class I Closing Appliances ...	DITTO.
Deckhouses on Flush Deck Ships ...	

PARTICULARS OF PROTECTION TO OPENINGS, ETC.

The following diagrams should be used to indicate the positions of cargo and coaling hatchways, gangway, cargo and coaling ports, ventilators, companionways, etc., which would affect the seaworthiness of the ship :—



Particulars of fiddley, funnel and ventilator coamings, engine room skylight and other openings in machinery casing tops and their means of closing :—

ENGINE ROOM SKYLIGHT OP STEEL STRONGLY CONSTRUCTED
FUNNEL & E.R VENTS, STRONGLY CONSTRUCTED.
STRONG STEEL HINGED COVERS FITTED TO FIDPLEY OPENINGS.

Particulars of Flush Bunker Scuttles :—

Particulars of Companionways:— NONE

Particulars of Ventilators in exposed positions on freeboard and superstructure decks:—

FCLE DK 1-9" COWL VENT 9" DIA TO STORE COAMING 3x.32

UPPER DK AFT WELL 8.20" VENTS To HOLDS. " 36 x 40

FORWELL 8-20" " " " 36 x 40

BRIDGE DIK 2- 6" DIA YENTS TO STORES. " 30 x 30.

2-10" " " " Twin Dks " 30" x .32.
Hold Tapered In Top Of Column

2-20 " " " HOLD TRIMMER 10 TOP OF SALON
" " " " " STAINLESS STEEL 30" / 1000X5

POOP DK 2- 9" DIA VENTS TO STEERING GEAR 80 (HIDE)
2- 12" ACOR 30 "

5-12 " " " " ALL- " 20 " "
1-8 " " " " PASSAGE " 30 " "

1. 6. 1964

ALL VENTILATOR COAMINGS FITTED WITH
WOOD PLUGS & CANVAS COVERS.

Particulars of Air Pipes in exposed positions on freeboard, raised quarter, or superstructure decks :—

ECLE PK. 2. 3" DIA S. N. AIR PIPES TO FORE PEAK ANK. 18" HIGH.

1-3"	"	5.14	"	"	"	Double Bottom.	18	"
2-1/2" 2-2"	"	"	"	"	"	"	36	"

For Well 2-3 " " " " " " 36 "
2-4 " " " " " " "

BRIDGE Pk 4-4" " " " " " " " " " "

ART Well 8-25 " " " " " " " " 36
36

$\frac{1}{4} = \frac{1}{4}$

Peak Dk 2.3" " " " " " " AFT PEAK JANK 18" " 18" "

1-2 1/2 " " " " " " " " " "

ALL AIR PIPES FITTED WITH WOOD PLUGS
& CANYAS COVERS

Particulars of Gangway Cargo and Coaling Ports:—

COALING DOOR. P.45 IN BRIDGE TWEEN DECKS. 5'-0" x 4'-0"
SECURED BY CHANNEL STRONGBACKS

See C-11 old
Bombay 12/58

Particulars of Scuppers and Sanitary Discharge Pipes :—

SANITARY DISCHARGES FROM POOPY BRIDGE TWEEN DECKS LED THROUGH SHIPS SIDE BELOW FREEBOARD DECK & FITTED WITH STORM VALVES & TRAPS AT INNER END.

SCUPPERS FROM POOP & BRIDGE FITTED WITH STORM VALVES AND WOOD PLUGS.
" FROM WELL DECK & STRINGER BAR CNT. ✓

Particulars of Side Scuttles :—

POOP & BRIDGE TWIN DIS. 12" DIA SIDE LIGHTS.

STEERING GEAR SPACE 9" " " "

FORE PEAK STORE 9" " " "

ALL FITTED WITH. HINGED DEADLIGHTS.

Vertical distance of Sill of lowest Side Scuttle above top of keel..... 33'-3"

Particulars of Guard Rails :—

POOP BRIDGE P'CLE DK 3. RAIL STANCHIONS 3'-6" HIGH & 5'-0" APART.

UPPER Dk STEEL BULWARK. 3'-9" HIGH. SUPPORTED BY 8" BULB PLATE STAYS ABOUT 6'-0" APART

Particulars of Gangways, Lifelines, etc. :—

PROVISION MADE FOR FITTING LIFELINES. IN WELLS ON P+S SIDES.

Particulars of Freeing Arrangements.						
	Length of Bulwark	Height of Bulwark	* Size of Freeing Ports	Number each side	Area each side	Rule area each side
After Well	107'-4"	3'-9"	8'-0" x 9"	4	24.0	21.48
Forward Well	103'-3"	3'-9"	8'-0" x 9"	4	24.0	20.65

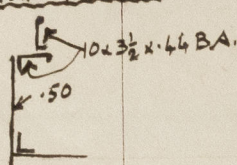
State position of each freeing port (F. and A. position and height above deck edge)

After Well:— FROM BRIDGE END. 11', 23', 42' 4 6 7' } 12" ABOVE DECK
Forward Well:— FROM BRIDGE FRONT 9'. 20'. 36' 57' }

State whether the freeing ports are fitted with shutters, bars, or rails, and give particulars of such:— ✓

Additional area where sheer is less than standard. ✓

PARTICULARS OF PROTECTION TO OPENINGS, ETC.

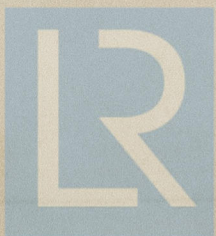
HATCHWAYS ON FREEBOARD AND SUPERSTRUCTURE DECKS.								
Description of Hatchway	No.1	No.2	UNDER BRIDGE No.3	No.4	No.5	BRIDGE DEK No.6		
Dimensions of Hatchway	22'6" x 16'	30'4" x 16'	10'5" x 16'	30'4" x 16'	23'4" x 16'	16'4" x 16'	SMALL HATCHES	
COAMINGS	Height above Deck ... Thickness ... Stiffeners ... Bridges, Stays 2" DIA...	30" .50 .44 10 x 3 1/2 BA AT SIDES	30" .50 .44 x-46 BA	30" .50 .44 7 x 3 x .40 AT ENDS	30" .50 .44	30" ABOVE WOOD .44 7 x 3 x .40 BA	UNDER FORECASTLE 4 x 3 TO STORE. 30" x 24" TO CHAIN LOCKER. 9 x 3 x .40 BA COAMING. 3" WOOD COVERS CLEATS ETC AND ONE TARPULIN.	
HATCH BEAMS	Number ... Spacing ... Scantling and Sketch ... Bearing Surface ...	4 4'6" 14 x 31 3 1/2 x 3 x .44 ANG TOP & BOTTOM	5 5'1" 14 x 34 3 1/2 x 3 x .42	5 1/2 5'1" 14 x 34 3 1/2 x 3 x .44	4 4'8" 14 x 32 3 1/2 x 3 x .44	2 5'5" 13 1/4 x 30 3 1/2 x 3 x .42	UNDER BRIDGE CROSS BUNKER. 4'4" x 16' COAL HATCH P.S. 7'0" x 4'0" COAL HATCH P.S. 9'4" x 4'0" COAL TRUNK HATCH P.S. 3' x 3' TRIMMING HATCH P.S. 30' x 29" 9 x 3 x .40 BA COAMING. 3" WOOD COVERS, CLEATS ETC AND ONE TARPULIN. IN ALLEYWAY AT ATTEND OF BRIDGE ACCESS TO BUNKER P.S. 30' x 13". 18 x .40 STEEL COAMING. 3" WOOD COVERS, CLEATS TWO ONE TARPULIN	
FORE AND AFTERS	Number ... Spacing ... Unsupported Lengths ... Scantling* and Sketch ... Bearing Surface ...	UPPER DEK HATCH SIDES 						ON BRIDGE DEK COAL HATCH P.S. 5' x 3'1" COAMING 30" ABOVE WOOD x .44. 3" WOOD COVERS, CLEATS ETC. AND TWO TARPULINS.
HATCH COVERS	Material ... Thickness ... How fitted ... Bearing Surface ...	W.P 3" SLAB COVERS F4 A 3	W.P 3" COVER F4 A 3	W.P 3" COVER F4 A 3	W.P 3" SLAB COVERS F4 A 3	W.P 3" COVER F4 A 3		
Spacing of Cleats		24	24	24	24	24		
Number of Tarpaulins		2	2	1	2	2		
*Are wood fore and afters steel shod at all bearing surfaces? YES Are battens and wedges efficient and in good condition? YES Are tarpaulins in good condition and in accordance with rule requirements? YES Are lashings provided in accordance with rule requirements? YES								

LOCKING BARS PROVIDED AT ALL HATCHES.

Particulars of any special features :-

Endorsement at first survey and at surveys for renewal of Certificate :-

The fittings and appliances are in accordance with the particulars shown on this form (or as now modified) and are in good condition.



© 2021

Lloyd's Register
Foundation