

# S. S. SHAHJEHAN

## S.S. N<sup>o</sup> 1012

### MIDSHIP SECTION.

S. S. N<sup>o</sup> 1004

SCALE 1/2" = 1'0"

DIMENSIONS.

404'0" B.P. ON L.W.L. X 54'0" EXT X 53'9" M.P. X 3'3" M.P. TO UPPER DECK  
TO CLASS 100 A.1 AT LLOYDS SPECIAL SURVEY

NUMERALS.			
1 <sup>st</sup> LONGITUDINAL NUMBER	L x D	= 404 x 31.25	= 12625
2 <sup>nd</sup>	L x (B+D)	= 404 x (53.75 + 31.25)	= 34340
PROPORTION 1/2 TO UPPER DECK		= 404 ÷ 31.25	= 12.92
1/2 TO BRIDGE		= 404 ÷ 39.0	= 10.36
MOULDED DEPTH			31.25
31.25 - (10.0 + 3.68)	FORWARD		17.67
31.25 - (10.0 + 4.33)	AFT		16.92
AT HALF LENGTH FORWARD			20.0
ERECTOR'S			47.0%

EQUIPMENT NUMERALS	
HULL	34340
POOP 40'85" X 7'75" X 7'5"	234
BRIDGE 113'66" X 7'75" X 7'5"	719
FORECASTLE 24'17" X 7'5" X 7'5"	192
BRIDGE 50'HOUSE 62'0" X 7'75" X 7'5"	360
DECKHOUSE & CASING 28' X 7'75" X 5'0"	147
TOTAL	35592

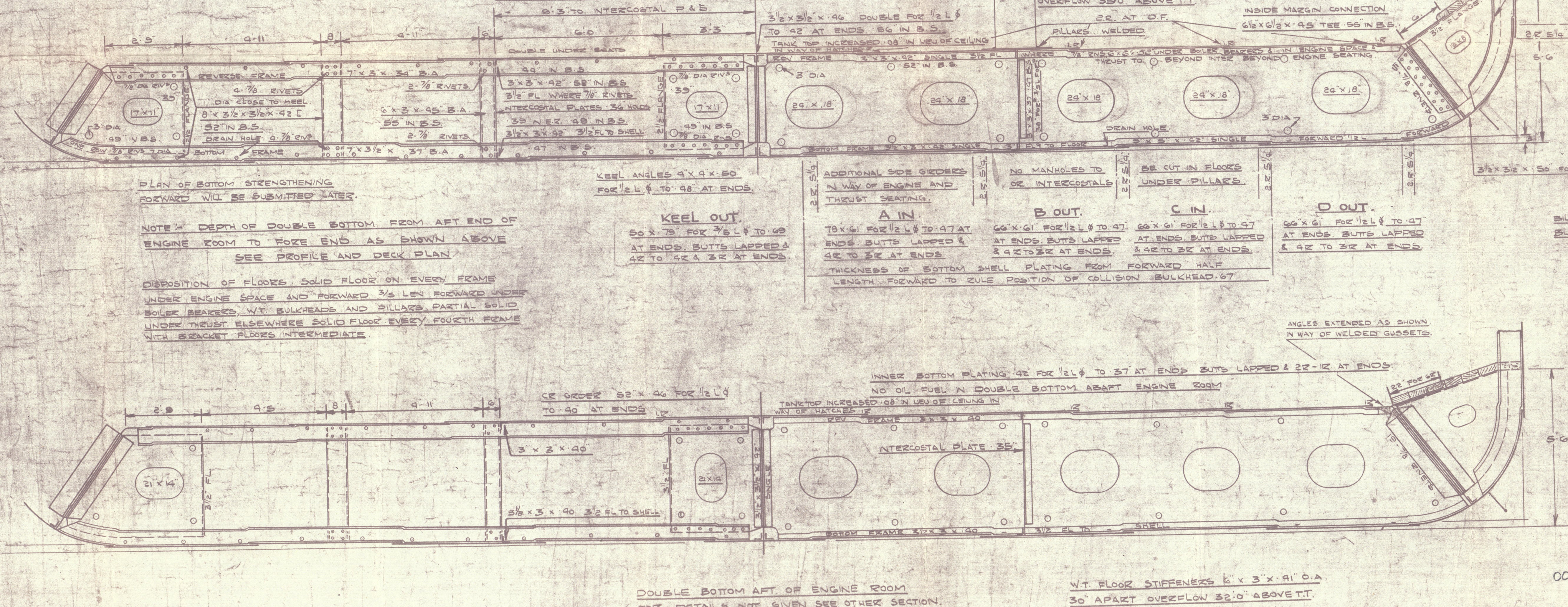
EQUIPMENT	
2 BOWER ANCHORS EACH 6334 CWT'S STOCKLESS	
1 STREAM ANCHOR 17 1/2 EX-STOCK	
270 200 FATHOMS 2 1/2" STUD LINK CHAIN CABLE 5600 CWT'S	
130 1 1/2" STREAM CHAIN OR 3/4" FLEXIBLE STEEL WIRE 6" X 12"	
120 5 FLEXIBLE STEEL WIRE TONLINE 6" X 12"	
2 HANGERS 30 FATHOMS 8 HEMP OR 2 3/4" FLEXIBLE STEEL WIRE 6" X 12"	
2 WAGES 20 7 1/2 2 1/2	
Also 1 BOWER ANCHOR 5 1/2 CWT'S STOCKLESS	

#### RIVETING NOTE

RIVETS IN FRAMES TO FLOORS AND CROSS PLATES IN AFT PEAK SPACED 5 DIA APART CR TO CR  
RIVETS IN FRAMES TO SHELL AT FLAT OF DOUBLE BOTTOM FORWARD OF 1/2 L FORWARD SPACED 5 1/2 DIA CR TO CR TWO COMPLETE ROWS  
RIVETS IN FRAMES TO FLOORS AT FLAT OF DOUBLE BOTTOM FORWARD OF 1/2 L FORWARD SPACED 5 1/2 DIA CR TO CR TWO COMPLETE ROWS  
RIVETS IN SIDE FRAMES TO SHELL PLATING SPACED 7 DIA APART 5 1/2 DIA IN WAY OF PEAKS AND DEEP FRAMING FORWARD & AFT LAST TANKS  
RIVETS IN BOTTOM FRAMES TO SHELL AFT OF 1/2 L FORWARD SPACED 7 DIA APART CR TO CR  
RIVETS IN 32 BUTTS OF OUTSIDE PLATING AND 32 BUTTS OF DECK STRINGER PLATES SPACED 4 DIA APART CR TO CR  
RIVETS IN 42 BUTTS OF OUTSIDE PLATING AND 92 BUTTS OF DECK STRINGER PLATES SPACED 4 DIA APART CR TO CR  
RIVETS IN BEAMS OF SHELL PLATING, DECK PLATING AND INNER BOTTOM PLATING AS PER TABLE 90  
RIVETS IN BUTTS OF DECK PLATING, INNER BOTTOM AND MARGIN PLATES SPACED 9 DIA APART CR TO CR  
RIVETS IN BEAMS AND BUTTS OF BULKHEAD AND TUNNEL PLATING, MARGIN ANGLES AND WEATHER DECK STRINGER  
RIVETS IN BEAMS AND BUTTS OF BULKHEAD SPACED 4 1/2 DIA APART CR TO CR 1/4 DIA IN DEEP TANK ENDS  
ANGLES AND BULKHEAD FRAMES TO BULKHEAD SPACED 4 1/2 DIA APART CR TO CR 1/4 DIA IN DEEP TANK ENDS  
RIVETS IN FLAT KEEL ANGLES, VERTICAL ANGLES CONNECTING FLOORS TO CENTRE GIDDER AND SHELL FLANGE OF  
WATERTIGHT BULKHEAD FRAMES SPACED 5 DIA APART CR TO CR  
RIVETS IN FRAMES TO FLOORS AFT OF 1/2 L FORWARD REVERSE FRAMES TO FLOORS AND INNER BOTTOM PLATING  
VERTICAL ANGLES TO FLOORS AND SIDE GIDDER, IN BULKHEAD STIFFENERS (EXCEPT PEAK BULKHEADS)  
AND IN DECK PLATING TO BEAMS ON EVERY FRAME SPACED 7 DIA APART CR TO CR  
RIVETS IN DECK PLATING TO BEAMS AT ALTERNATE FRAMES IN PEAK TANK BULKHEAD STIFFENERS  
SPACED 6 DIA APART CR TO CR  
RIVETS IN CENTRE GIDDER TOP ANGLES SPACED 7 DIA APART CR TO CR NON-WATERTIGHT  
RIVETS IN CENTRE GIDDER TOP ANGLES SPACED 5 DIA APART CR TO CR WATERTIGHT

SCANTLING AND DETAILS OF CONSTRUCTION NOTED HEREON ARE SUBMITTED ON  
THE UNDERSTANDING THAT THEY ARE THE MINIMUM WHICH WILL BE ACCEPTED FOR  
CLASS AND IF NOT THEY ARE TO BE AMENDED, ERRORS AND OMISSIONS EXCEPTED.

ALL B.A. AND CHANNEL SECTIONS GIVEN HEREON ARE N.B.S.



FORECASTLE DECK  
STRINGER PLATE 35 x 34  
BUTTS LAPPED & 12  
PLATING 34 UNSHEATHED  
BUTTS LAPPED & 12  
STRINGER ANGLE 3 1/2 x 3 1/2 x 34

POOP DECK  
STRINGER PLATE 30 x 34  
BUTTS LAPPED & 12  
PLATING 34 UNSHEATHED  
BUTTS LAPPED & 12  
STRINGER ANGLE 3 1/2 x 3 1/2 x 34

M OUT.  
59' AT BRIDGE 28' AT POOP  
41' AT FORECASTLE  
BUTTS LAPPED & 32 IN BRIDGE  
12 AT POOP & FORECASTLE

L IN.  
59' AT BRIDGE 38' AT POOP  
91' AT FORECASTLE  
BUTTS LAPPED & 32 IN BRIDGE  
12 AT POOP & FORECASTLE

K OUT.  
50' FOR 1/2 L TO RULE  
FITTED 65 x 86 FOR 1/2 L TO 45' AT ENDS  
61' IN WAY OF BRIDGE  
BUTTS LAPPED & 52 FOR 1/2 L TO 42 &  
32 AT ENDS 32 IN WAY OF BRIDGE  
STRENGTHENING AT BREAKS AS PER RULE

J IN.  
50' FOR 1/2 L TO RULE  
FITTED 65 x 72 FOR 1/2 L TO 45' AT ENDS  
61' IN WAY OF BRIDGE  
BUTTS LAPPED & 42 TO 42 & 32 AT ENDS  
NOT EXCEEDING 68  
32 IN WAY OF BRIDGE

H OUT  
78 x 61' FOR 1/2 L TO 45' AT ENDS  
BUTTS LAPPED & 32 FORE & AFT

G IN.  
78 x 61' FOR 1/2 L TO 45' AT ENDS  
BUTTS LAPPED & 32 FORE & AFT

F OUT.  
78 x 61' FOR 1/2 L TO 45' AT ENDS  
BUTTS LAPPED & 32 FORE & AFT

E IN.  
78 x 61' FOR 1/2 L TO 47' AT ENDS BUTTS LAPPED  
32 AT ENDS  
WELDED MIDSHIPS

MARGIN PLATE TO RULE 34 x 50  
FITTED ABOUT 40 x 50-58 IN E.E.  
BUTTS LAPPED & 32 FORE & AFT

BILGE KEEL ABOUT 160 FEET LONG OF 18 x 20  
SHELL PLATE WELDED TO SHELL

MARGIN PLATE 51 x 50  
BUTTS LAPPED & 32  
TANK GUSSET PLATE 40  
EVERY FRAME 6-7/8 RIVETS

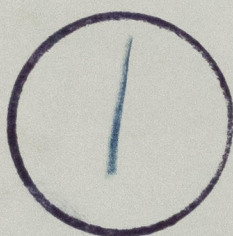
MARGIN CONNECTION 6 1/2 x 6 1/2 x 95 TEE  
WITH 20-7/8 RIVETS EACH FLANGE



S. S. SHANJEHAN \*

MIDSHIP SECTION

AS BUILT



© 2021

Lloyd's Register  
Foundation

003964-003970-0030