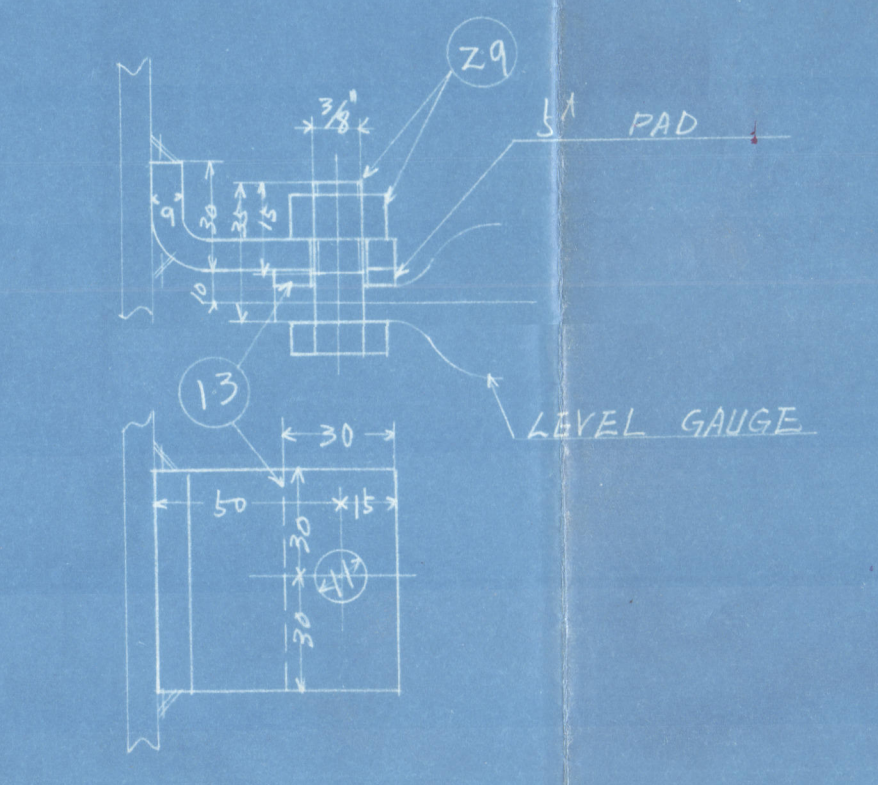
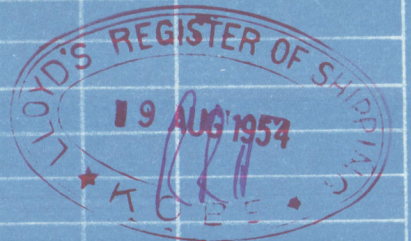


HEATING COIL	
OUTSIDE DIA	30.0 MM
TOTAL LENGTH	7.8 M
TOTAL HEATING SURFACE	0.73 M <sup>2</sup>
HEATING SURFACE / M <sup>2</sup>	0.21 M <sup>2</sup>
HYDRAULIC TEST PRESS.	17 kg/cm <sup>2</sup>



ITEM	MARKS	PARTICULARS	MATERIALS	TEST PRESS	NO. REQUIRED	ESTIMATED WEIGHT (KG)	REMARKS
30		BOLT AND NUT	STEEL S541	SET	2	2	
29		BOLT AND NUT	STEEL S541	SET	3	3	
28		FRANG	STEEL S541	10	10		
27		BOLT AND NUT	STEEL S541	SET	20	20	
26		STUD AND NUT	STEEL S541	SET	4	4	
25		STUD AND NUT	STEEL S541	SET	4	4	
24		STUD AND NUT	STEEL S541	SET	8	8	
23		STUD AND NUT	STEEL S541	SET	12	12	
22		STUD AND NUT	STEEL S541	SET	16	16	
21		PAWENG	CWFA	6	6		
19		STOPPER PLATE	STEEL S541	20	20		
18		BRACKET FOR HEATING COIL	STEEL S541	2	2		
17		PAD FOR THERMOMETER	STEEL S541	1	1		
16		HEATING COIL	STEEL S541	1	1		
15		PLUG FOR OIL DRAIN	STEEL S541	1	1		
14		PLUG FOR OIL DRAIN	STEEL S541	1	1		
13		BRACKET FOR OIL LEVEL GAUGE	STEEL S541	3	3		
12		PAD FOR BOILING STEAM	STEEL S541	1	1		
11		DISTANCE PIECE	STEEL S541	1	1		
10		PAD FOR HEATING COIL	STEEL S541	2	2		
9		PAD FOR AIR PIPE	STEEL S541	1	1		
8		PAD FOR LEVEL GAUGE	STEEL S541	1	1		
7		INTERNAL PIPE	STEEL HOT DRAIN	1	1		
6		PAD FOR SELF CLOSING VALVE	STEEL S541	1	1		
5		PAD FOR OIL OUTLET	STEEL S541	1	1		
4		PAD FOR OIL INLET	STEEL S541	1	1		
3		MANHOLE COVER	STEEL S541	2	2		
2		PAD FOR MANHOLE	STEEL S541	2	2		
1		TANK BODY	STEEL S541	1	1		



WORKS ORDER R-3625

EQUIPMENT DESIGNING SECTION  
ENGINE DESIGNING DEPARTMENT

CHIEF *K. Kawahara*  
HEAD

CHECKED BY *T. Kawahara*  
DRAWN BY *M. Kawahara*  
DATE DRAWN *1957.8.19* DATE ISSUED *1957.8.19*

3 M<sup>3</sup> FUEL OIL CLEANED TANK

HYDRAULIC TEST PRESS 0.5 kg/cm<sup>2</sup> SCALE 1/10

DRAWING NO. 1001

LOYD'S REGISTER OF SHIPBUILDERS

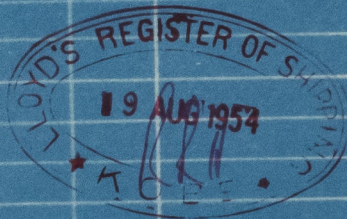
NAGASAKI WORKS, MITSUBISHI SHIP BUILDING & ENGINEERING CO., LTD.

003948-003957-0122



SS41	8 SET	8 SET
SS41	3 SET	3 SET
SS41	10	10
SS41	20 SET	20 SET
SS41	4 SET	4 SET
SS41	4 SET	4 SET
SS41	8 SET	8 SET
SS41	12 SET	12 SET
SS41	16 SET	16 SET
CUPA	6	6

SS41	20	20
SS41	2 SET	2 SET
SS41	1	1
ST30A	1 SET	1 SET
SS41	1	1
SS41	1	1
SS41	3	3
SS41	1	1
SS41	1	1
SS41	2	2
SS41	1	1
SS41	1	1
HOT DRUM		
SS41	1	1
SS41	1	1
SS41	1	1
SS41	2	2
SS41	2	2
SS41	1	1



MATERIALS	TEST MARK	WORKING	SPARE	TOTAL	1-OFF	TOTAL	REMARKS
		NO. REQUIRED	PER SHIP	ESTIMATED	WEIGHT (KG)		

R-3625

3<sup>M3</sup> FUEL OIL CLEANED TANK

HYDRAULIC TEST PRESS	SCALE	DRAWING	NO.
0.5 kg/cm <sup>2</sup>	1/10, 1/3	Q-3	

TSUBISHI SHIP BUILDING & ENGINEERING CO, LTD

003948-003957-0122

Attached to  
Shimonoseki

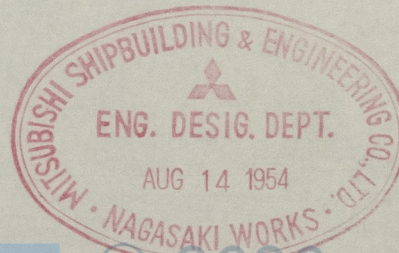
Rpt 19, No. 363

KOEI MARU

Rpt No. 2mk. 363

3<sup>M3</sup> Fuel Oil Cleaned Tank

PLAN FOR APPROVAL.	
HULL NO.	
SHIP NAME	
NO.	
SHIP YARD.	DATE.
APPLICATION.	FILE NO.



© 2020  
K. Kurahara

Lloyd's Register  
Foundation

AUG. 16, 1954

003948-003957-0122