

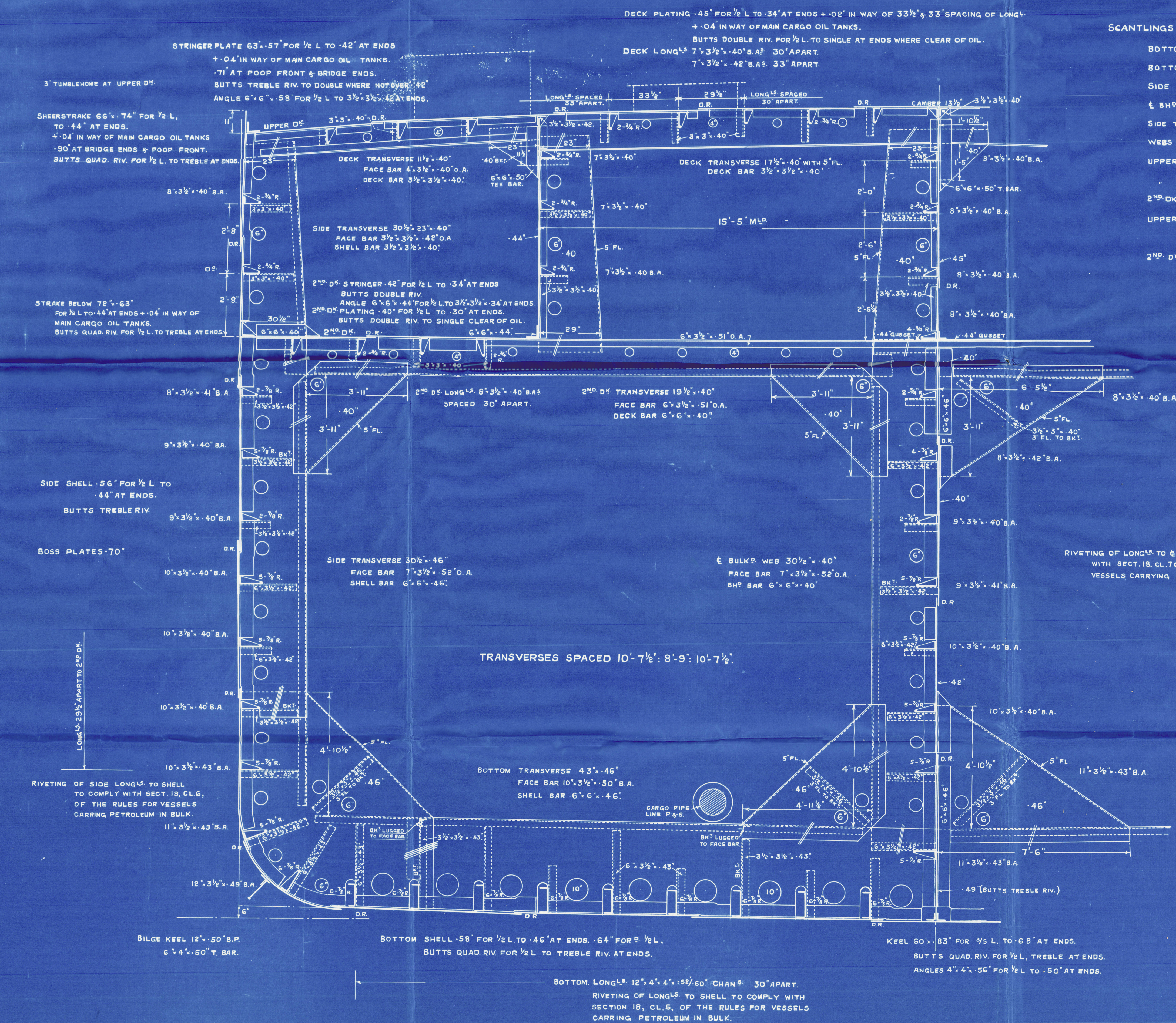
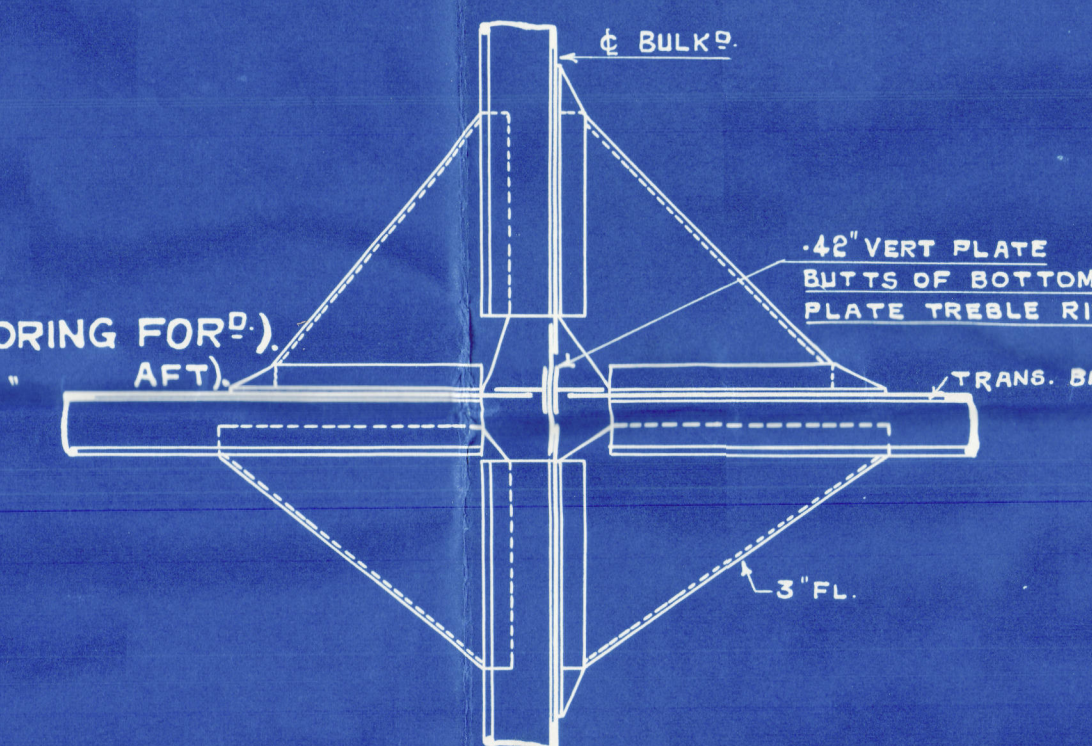
DIMENSIONS 385'-0" B.P. x 54'-0" B.M.^{LD} x 31'-0" D.M.^{LD}.
TO CLASS LLOYDS + 100 A.I. "FOR CARRYING PETROLEUM IN BULK".
"LONGITUDINAL FRAMING".

ALL SECTIONS ARE N.B.S.
SCALE $\frac{1}{2}" = 1$ FOOT.

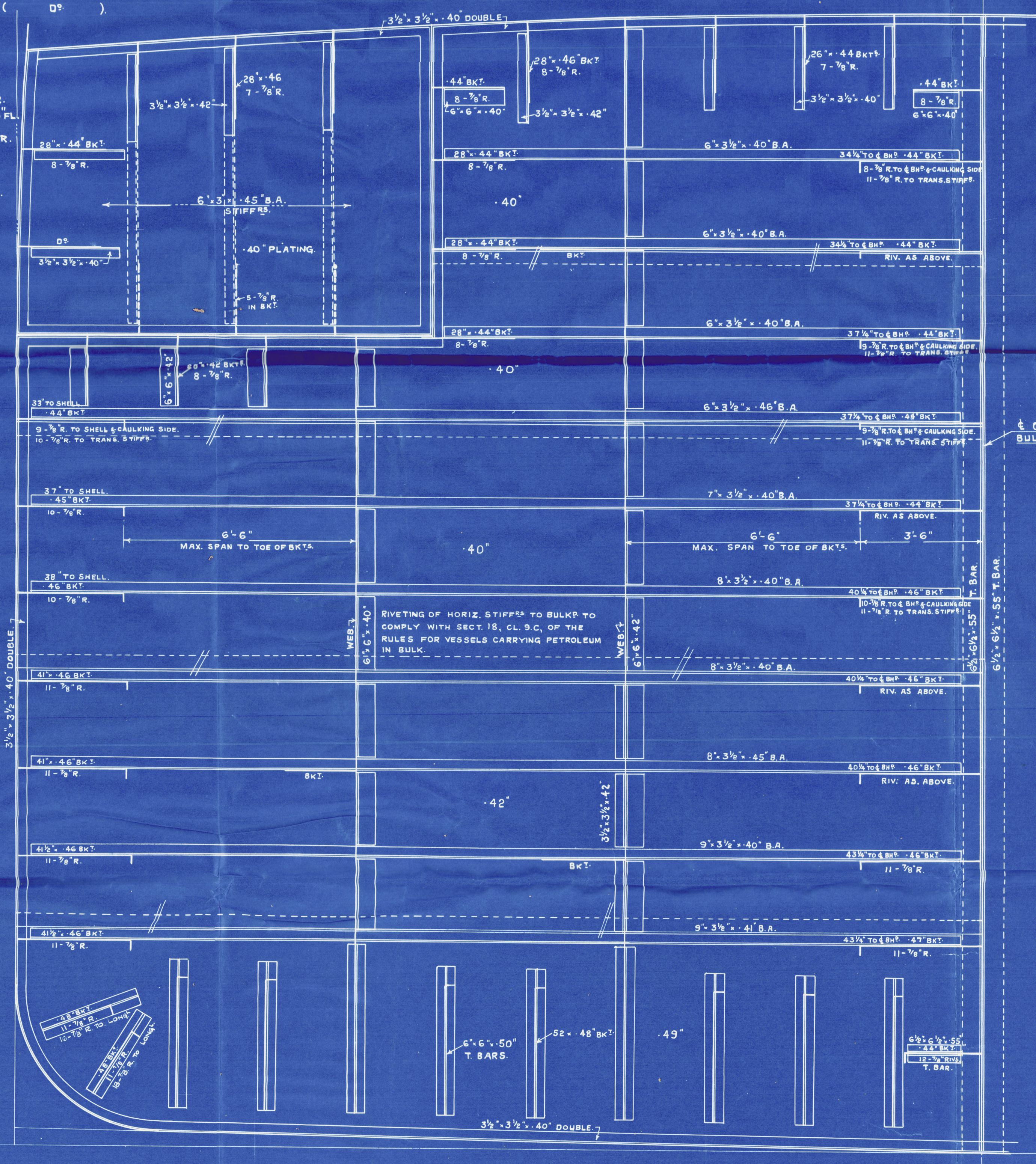
$$\begin{aligned} L &= 385' & B &= 54' & D &= 31' \\ L \times D &= 385 \times 31 & & & &= 11935. \\ L \times (B+D) &= 385 (54+31) & & & &= 32725. \\ L/D &= 385/31 & & & &= 12.42. \end{aligned}$$

L x (B+D).	385 (54+31)	=	32725.
POOP.	108.0 x 8 x .75	=	648.
BRIDGE.	36.0 x 8 x .75	=	216
FORECASTLE.	59.0 x 8 x .75	=	354
CASINGS.	75.0 x 8 x .5	=	300
BRIDGE HOUSE.	36.0 x 8 x .5	=	144
			<u>34387.</u>

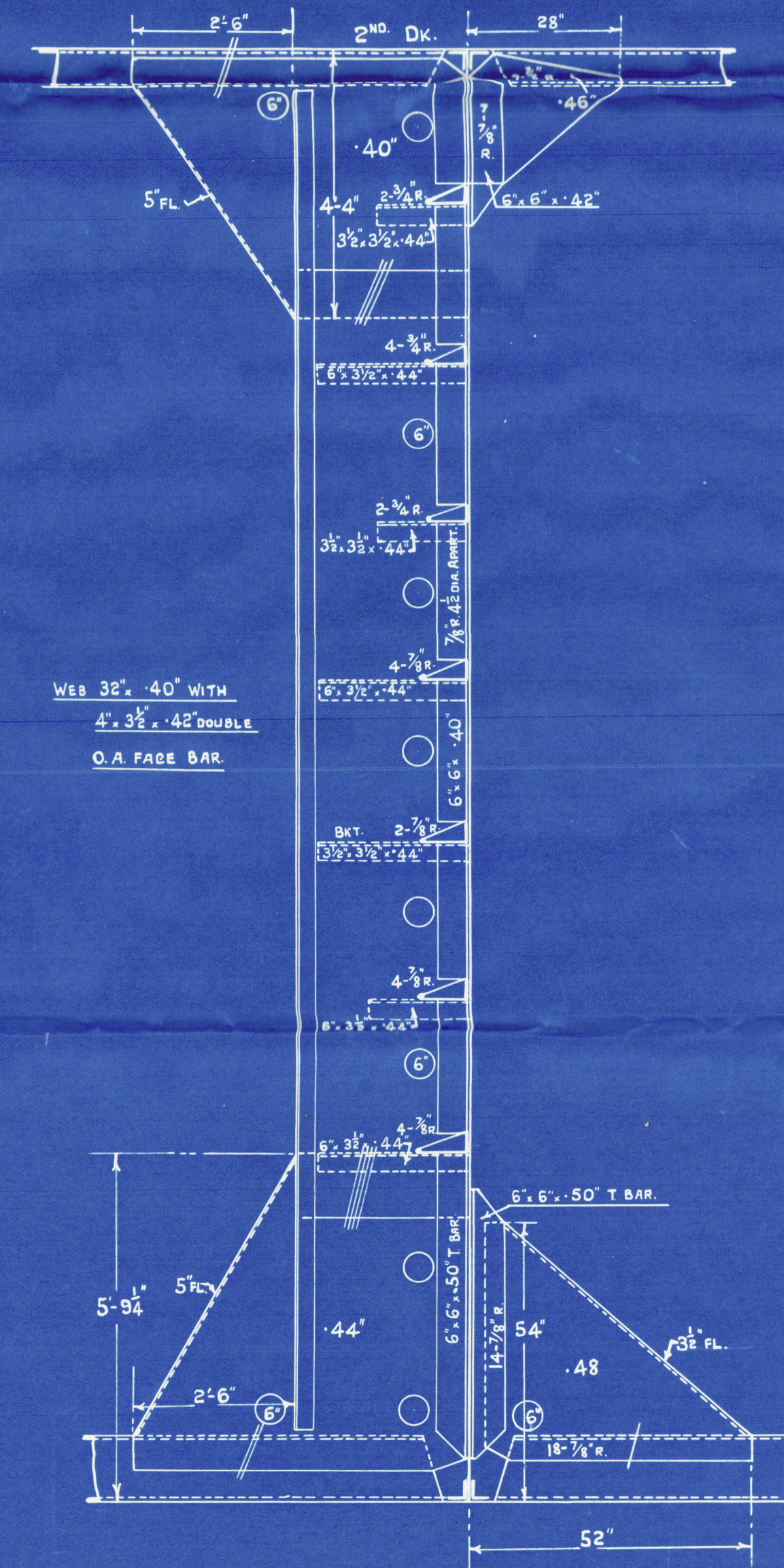
2 BOWER ANCHORS 57 CWT.S. EACH, STOCKLESS.
1 " " 63 " " "
1 STREAM " 16 1/4 " EX. STOCK.
270 FTHS. 1 1/4" TAYCO CABLE.
90 " 4 3/4" S.W.R. STREAM WIRE.
120 " 4 3/4" " TOWLINE.
2 -90 " 2 3/4" " HAWSEERS.
2 -90 " 2 1/2" " WARPS.
4 -15 " 1 1/4" TAYCO CABLE. (FOR MOORING FOR)
6 -15 " 1 1/4" " " " (ACT)



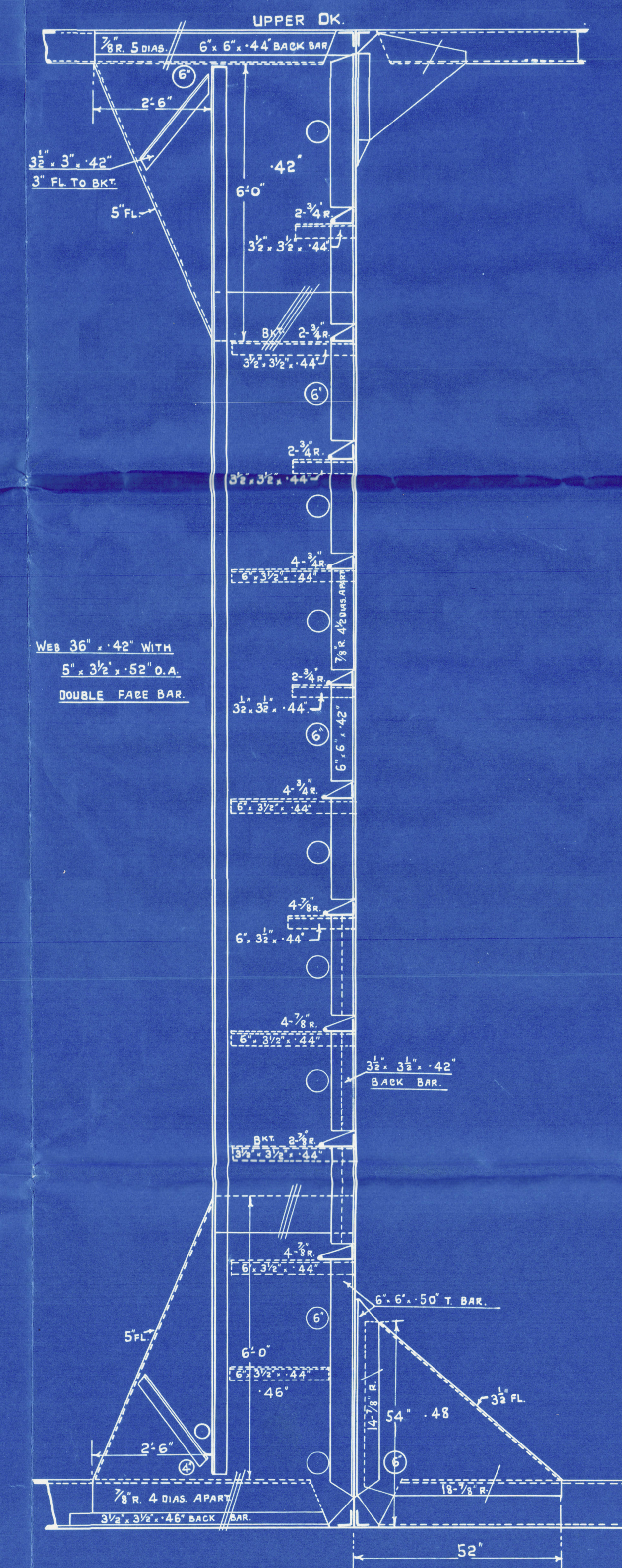
BOTTOM LONG⁴ 12° 4' x 4' - .40° 60' CHAN.
 BOTTOM TRANS. 43° .46' WITH 0° 32' - 50' FACE BAR (DOUBLE SHELL BARS)
 SIDE TRANS. 34° .46' WITH 7° 33' - 82° 0' FACE BAR (INC⁴ ALLOWANCE FOR SHEER)
 1/2 BWP W/ 34° - .40' WITH 7° 32' - 82° 0' FACE BAR ()
 SIDE TRANS. IN SUMMER TANK } AS FOR 30° TANK.
 WEBS IN EXPANSION TANK }
 UPPER DS TRANS. IN SUMMER TANK 1 1/2° .40' WITH
 4° 32' - .40' FACE BAR.
 EXPANSION TANK 1 1/2° .40' WITH 5° 51' FSL
 2ND DS TRANS. 1 1/2° .40' WITH 6° 32' - 51° 0' FACE BAR.
 UPPER DS LONG⁴ 7° 33' - .40' BAR AT 30° SPACING.
 7° 33' - .40' BAR AT 33° 33' SPACING.
 2ND DS LONG⁴ 7° 33' - .42' BAR AT 30° SPACING.



MIDSHIP TRANSVERSE O.T. BULKHEAD



WEB 17'-6" FROM C



WEB 10'-0" FROM C.

M.S. *Yenangyang*
Swan Hunter's No 1531

Midship Section
as Built

M.S. "*Yenangyang*".
NEWCASTLE ON TYNE.

Report No. 95379.

RETAIN



© 2020

Lloyd's Register
Foundation

003937-003947-0196