

MIDSHIP SECTION S.S. JALAPADMA

SCALE: $\frac{1}{2}$ " = 1 FOOT

DIMENSIONS

400'-0" BR x 51'-9" MLD. 52'-0" EXT. x 30'-6" MLD. TO UPPER DECK.
TO CLASS +100 A1 AT LLOYD'S SPECIAL SURVEY.
EQUIPMENT NUMERAL 34728.

LLOYD'S NUMERALS

1ST NUMERAL ----- 12200
2ND NUMERAL ----- 32900
1/6 TO UPPER DECK ----- 13-11
1/2 TO BRIDGE DECK ----- 10-39
3' ----- 18-46
7' ----- 30-50
EJECTIONS ----- 56-75%

STEM $9\frac{1}{2}$ " x $2\frac{1}{2}$ "
STERN FRAME STREAMLINED
RUDDER STOCK $12\frac{1}{4}$ " DIAMETER.

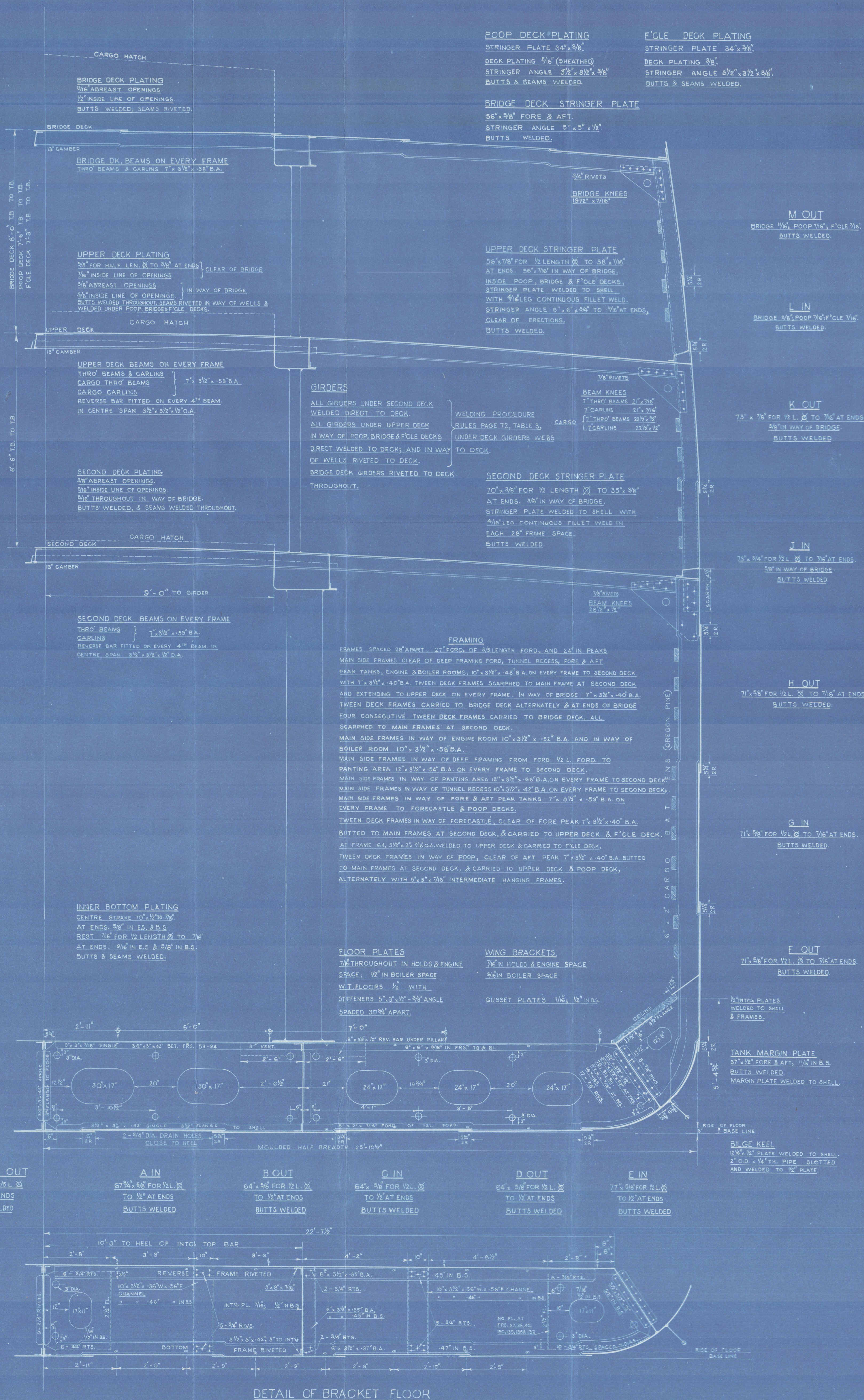
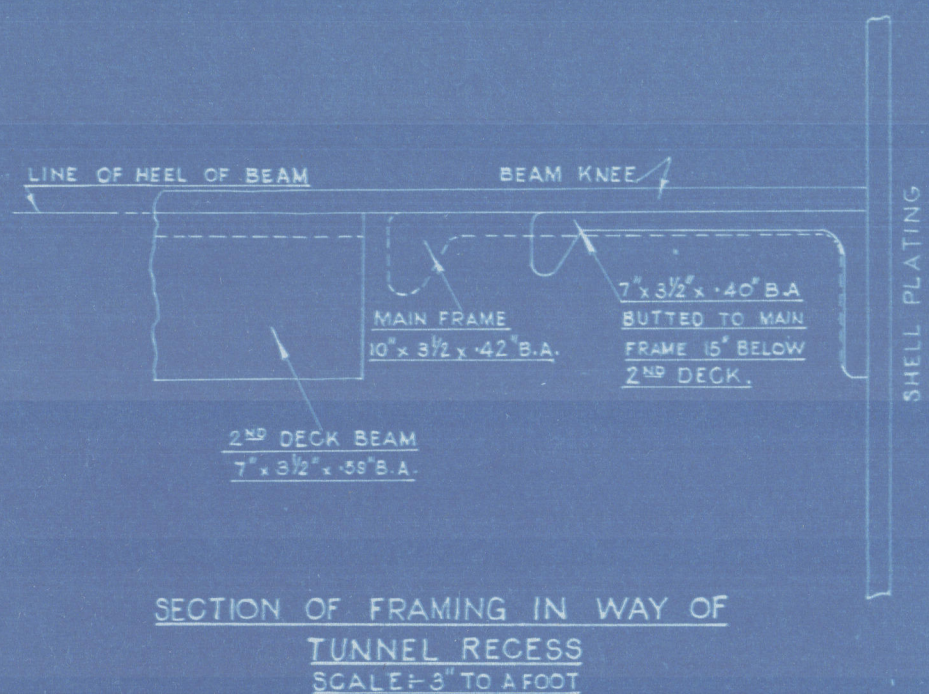
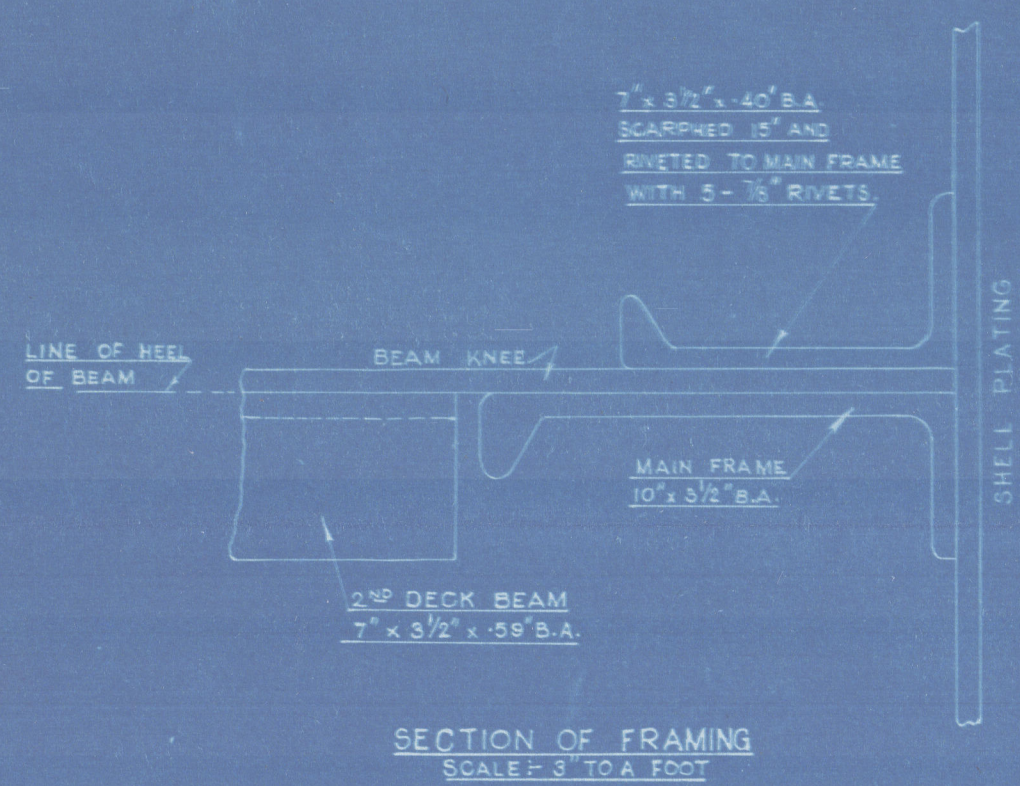
EQUIPMENT

3 STOCKLESS BOWER ANCHORS - 2 AT 64" CWT'S, 1 AT 55" CWT'S.
1 STREAM ANCHOR AT 18" CWT'S.
270 FATHOMS $1\frac{1}{2}$ " STUD LINK CHAIN CABLES (TAYCO) AT 546" CWT'S.
90 FATHOMS $4\frac{3}{4}$ " STEEL WIRE IN LIEU OF STREAM CHAIN.
120 FATHOMS $4\frac{3}{4}$ " STEEL WIRE TOWLINE.
2 AT 90 FATHOMS $2\frac{3}{4}$ " FLEXIBLE STEEL WIRE HAWSER.
2 AT 90 FATHOMS $2\frac{1}{2}$ " FLEXIBLE STEEL WIRE WARPS.

RIVETING NOTE

RIVETS IN BULB ANGLE FRAMES TO SHELL SPACED 7 DIAS. APART CR. TO CR. AND
5/8 DIAS. APART CR. TO CR. IN WAY OF FORE & AFT PEAK TANKS & DEEP FRAMING FORD.
11 W.T. BULKHEAD FRAMES TO SHELL SPACED 5 DIAS. APART CR. TO CR.
12 SHELL CHOCKS 4 IN EACH 24" SPACE, 5 IN EACH 27" & 28" SPACE.
13 BULKWARK RAIL BAR SPACED 7 TO 8 DIAS. APART CR. TO CR.
14 6" x 6" STRINGER ANGLE SPACED 5/2 DIAS. APART CR. TO CR. (REELLED)
15 5" x 5" STRINGER ANGLE SPACED 6 DIAS. APART CR. TO CR. (REELLED)
16 3/2" x 3/2" STRINGER ANGLE SPACED 4 1/2 DIAS. APART CR. TO CR.
17 BUNKER BULKHEAD FRAME SPACED 6 DIAS. APART CR. TO CR.

FRAME SPACING IN INCHES	THICKNESS OF SHELL PLATING ABOVE .36" TO .50"	ABOVE .50" TO .72"	ABOVE .72" TO .94"
22 1/2	6 - 3/8" RIVETS		
24	7 - 3/4" RIVETS	6 - 7/8" RIVETS	3 - 1" RIVETS
27		7 - 7/8" RIVETS	8 - 1" RIVETS
28		7 - 7/8" RIVETS	6 - 1" RIVETS



SOLID FLOORS ON EVERY FRAME IN ENGINE SPACE AND FORWARD OF 3/8 LENGTH FORWARD.
UNDER BOILER BEARERS, BULKHEADS, & PILLARS. PARTIAL SOLID UNDER THRUST.
ELSEWHERE SOLID FLOORS ON EVERY FOURTH FRAME, BRACKET FLOORS INTERMEDIATE.

For The Scania Steam Navigation Co. Ltd.
Chief Shipyard Manager.

'AS FITTED'

MIDSHIP SECTION

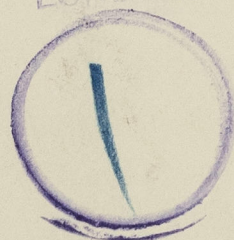
of

"JALAPADMA" 

VIZAG. RPT. N° 66.

RETAIN

RECORDS DEPT
RECORDS
LONDON



603926-003938-0116



© 2020

Lloyd's Register
Foundation