

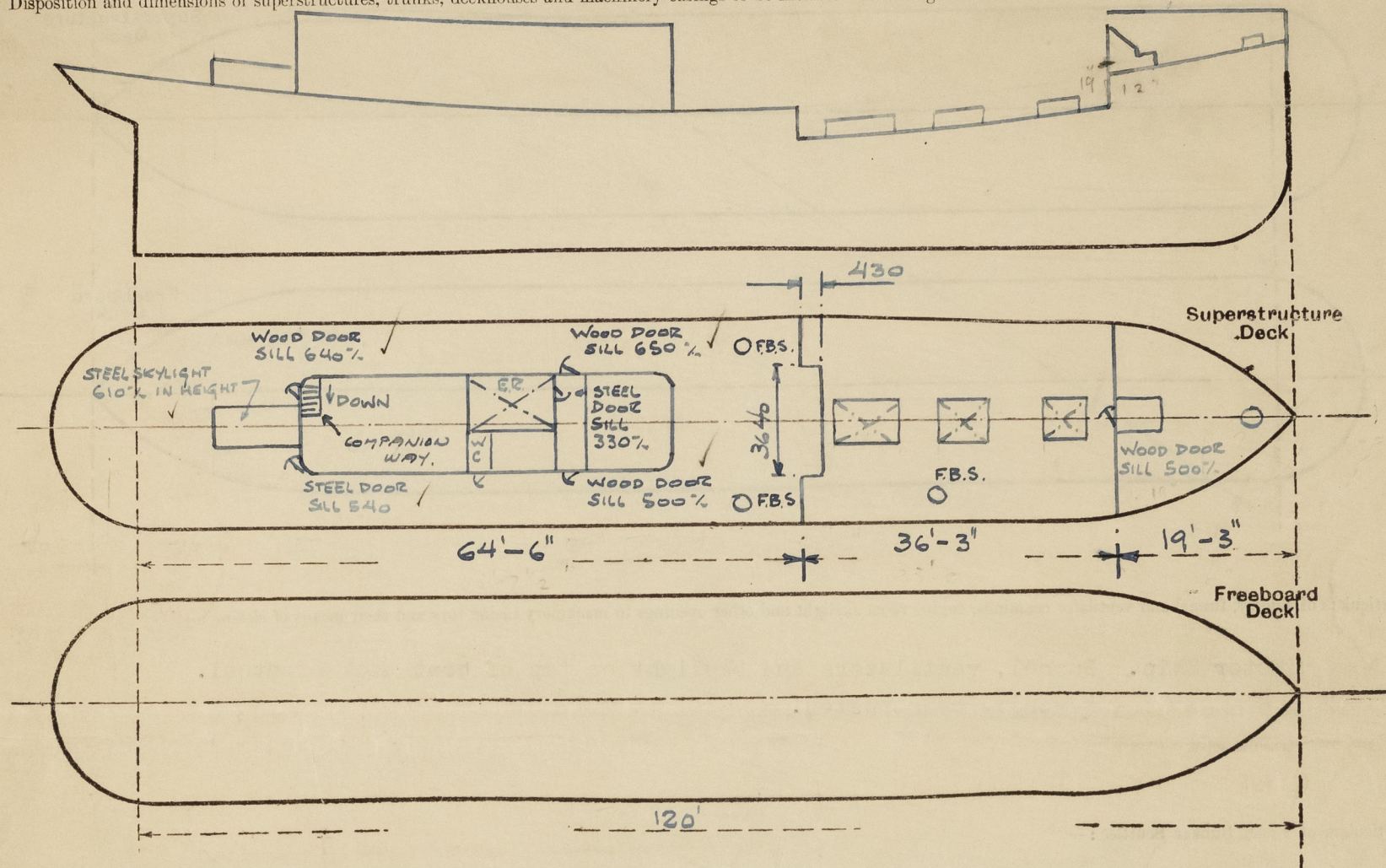
# Lloyd's Register of Shipping.

## SURVEYS FOR FREEBOARD.

### (CONDITIONS OF ASSIGNMENT.)

Ship's Name **Motor Trawler "GRÖNLAND" ex "CONCORD"** Port of Survey **Gravarne**  
 Official Number **9100** Surveyor's Signature *Hanne Linn*  
 Nationality and Port of Registry **Gravarne, Sweden.** Date of Survey **29th December, 1950.**

Disposition and dimensions of superstructures, trunks, deckhouses and machinery casings to be inserted in the diagrams and tabular statement:



Particulars of Superstructures, Trunks, Casings, Deckhouses.

	Coaming	Plating	Stiffeners	Spacing	End Attachments of Stiffeners	Size of Openings	Height of Sills	Height of Casings
Poop Bulkhead ...								
Raised Quarter Deck Bulkhead ...		10 mm.				No opening		12"
Bridge, After Bulkhead ...								
Bridge, Forward Bulkhead ...								
Forecastle Bulkhead ...		Open						
Raised dk <del>Trunk</del> forward ...		10 mm.				No opening		12"
Trunk, Forward ...								
Exposed Machinery Casings on Freeboard or Raised Quarter Decks ...		7 mm.	60x60x7 mm	740	None	see sketch		6'-0"
Exposed Machinery Casings on Superstructure Decks ...								
Machinery Casings within Superstructures not fitted with Class I Closing Appliances ...								
Deckhouses on Flush Deck Ships ...								

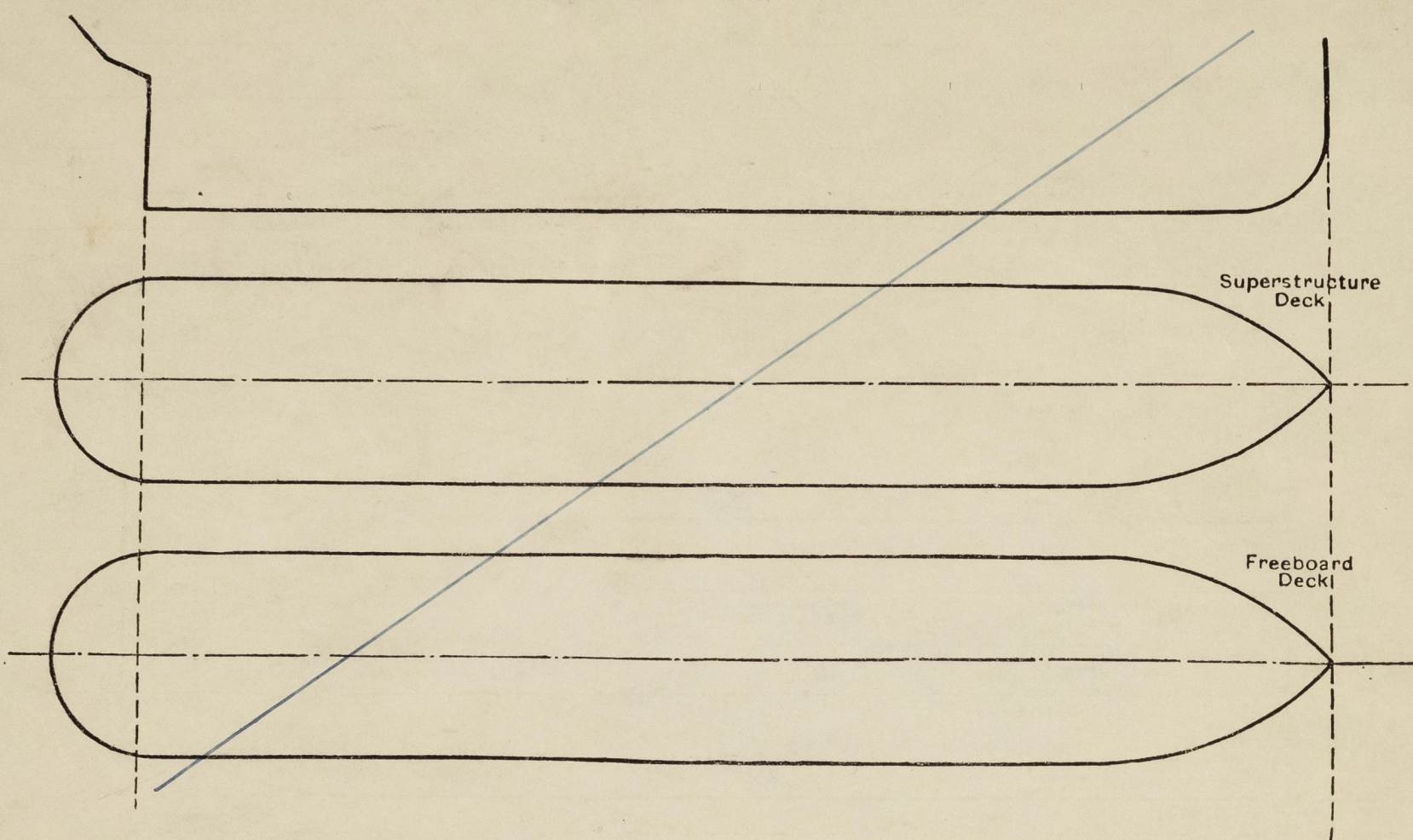
Particulars of Closing Appliances (state if capable of being manipulated from both sides).

Poop Bulkhead ...	
Raised Quarter Deck Bulkhead ...	No opening. ✓
Bridge, After Bulkhead ...	
Bridge, Forward Bulkhead ...	
Forecastle Bulkhead ...	Open. ✓
Exposed Machinery Casings on Freeboard or Raised Quarter Decks ...	No opening. ✓
Exposed Machinery Casings on Superstructure Decks ...	
Machinery Casings within Superstructures not fitted with Class I Closing Appliances ...	Companionway through deck house. ✓
Deckhouses on Flush Deck Ships ...	



# PARTICULARS OF PROTECTION TO OPENINGS, ETC.

The following diagrams should be used to indicate the positions of cargo and coaling hatchways, gangway, cargo and coaling ports, ventilators, companionways, etc., which would affect the seaworthiness of the ship:—



Particulars of fiddle, funnel and ventilator coamings, engine room skylight and other openings in machinery casing tops and their means of closing:—

Motor Ship. Funnel, ventilators and skylight on top of boat deck of steel.  
Strongly constructed.

Particulars of Flush Bunker Scuttles:—

Cast iron permanently secured. (Not being used since converted to motorship).

Particulars of Companionways:—

Inside open forecastle of steel, <sup>STEEL W/</sup>wood door, sill <sup>625</sup>500 mm. operable from both sides. ✓  
To aft accommodation through aft end deckhouse of steel, wood door, sill 640 mm. operable from both sides. ✓  
To E.R. through deck house of steel, outer door wood, 650 mm. sill p. 500 mm. sill stbd. inner door steel 330 mm. sill. All operable from both sides. ✓

Particulars of Ventilators in exposed positions on freeboard and superstructure decks:—

All ventilators are 915 mm. <sup>or</sup>above and efficiently constructed and supported and fitted with closing appliances. ✓

Particulars of Air Pipes in exposed positions on freeboard, raised quarter, or superstructure decks:—

All air pipes at deck house sides at least 915 mm. in height with closing appliances. ✓

Particulars of Gangway Cargo and Coaling Ports:—

None. ✓

Grönland.

Particulars of Scuppers and Sanitary Discharge Pipes:—

Sanitary discharge from W.C. in deck house s.s. through ship's side with NRV 700 mm. below R.Q.D. ✓

THERE ARE NO SCUPPERS OR SANITARY DISCHARGES LEADING OVERBOARD FROM SPACES BELOW THE FREEBOARD DECK.

Particulars of Side Scuttles:—

None fitted. ✓

Vertical distance of Sill of lowest Side Scuttle above top of keel

Particulars of Guard Rails:—

Bulwark 800 mm. in height of steel supports spaced  $\leq$  1800 mm apart on Upper and R.Q. decks. ✓

Forecastle: guard rails 950 mm. in height, 2 rods and stanchions 1400 mm. apart. ✓

Particulars of Gangways, Lifelines, etc.:—

## Particulars of Freeing Arrangements.

	Length of Bulwark	Height of Bulwark	Size of Freeing Ports	Number each side	Area each side	Rule area each side
After Well ... ..	64'-6"	800 mm.	460 x 280 mm. <del>560 x 400 mm.</del>	3 <del>2</del>	4.17 $\phi$ <del>4.15</del>	5% of Bulwark = 8.3 $\phi$
Forward Well ... ..	36'-3"	800 mm.	420 x 300 mm.	1	1.35 $\phi$	2% of Bulwark = 1.9 $\phi$

State position of each freeing port ... .. (After Well:— (F. and A. position and height above deck edge) (Forward Well:—

State whether the freeing ports are fitted with shutters, bars, or rails, and give particulars of such:— R.Q.D. Shuttles. Upper deck. 2 bars.

Additional area where sheer is less than standard.



## PARTICULARS OF PROTECTION TO OPENINGS, ETC.

HATCHWAYS ON FREEBOARD AND SUPERSTRUCTURE DECKS.										
Description of Hatchway	...	...	Ins.fcl. Peak st.	No.1 Upper	No.2 1090 - 900 x 1000 1370	No.3 - deck. 950 x 3600 x 3000 - 1375				
Dimensions of Hatchway	...	...	600 Ø	940x1900						
COAMINGS	{	Height above Deck	...	315	315	520 315	320 600			
		Thickness	...	10	10	10	10			
		Sides	...							
		Ends	...							
		Stiffeners	...	-	-	-	-			
		Brackets, Stays	...	-	-	-	-			
HATCH BEAMS	{	Number	...							
		Spacing	...							
		Scantling and Sketch	...							
		Bearing Surface	...							
FORE AND AFTERS	{	Number	...							
		Spacing	...							
		Unsupported Lengths	...							
		Scantling* and Sketch	...							
		Bearing Surface	...							
HATCH COVERS	{	Material	...	wood	wood	wood	wood			
		Thickness	...	2 1/2"	2 1/2"	2 1/2"	2 1/2"			
		How fitted	...	-	TR	TR	TR			
		Bearing Surface	...	6340 mm.	40 mm.	30 mm.	75 mm.			
Spacing of Cleats	...	...	...	...	...	...	...	...	...	
Number of Tarpaulins	...	...	...	...	...	...	...	...	...	
covers										
*Are wood fore-and-afters steel shod at all bearing surfaces?			No.							
Are battens and wedges efficient and in good condition?			Yes. ✓							
Are tarpaulins in good condition and in accordance with rule requirements?			Yes ✓							
Are lashings provided in accordance with rule requirements?			Yes. ✓							

Particulars of any special features:—

Vessel to be operated as fish carrier during part of the year /  
and as trawler during the remainder part.

Upper and R.Q. decks and also raised deck forward - wood deck.  
Forecastle deck - steel.

SKYLIGHT ON UPPER DECK 1650 x 800 COAMING 610 ABOVE WOOD DECK  
10 mm THICK FITTED WITH HINGED STEEL WEATHERTIGHT COVERS ON TOP.

Endorsement at first survey and at surveys for renewal of Certificate:—

The fittings and appliances are in accordance with the particulars shown on this form (or as now modified) and are in good condition.



© 2020

Lloyd's Register  
Foundation