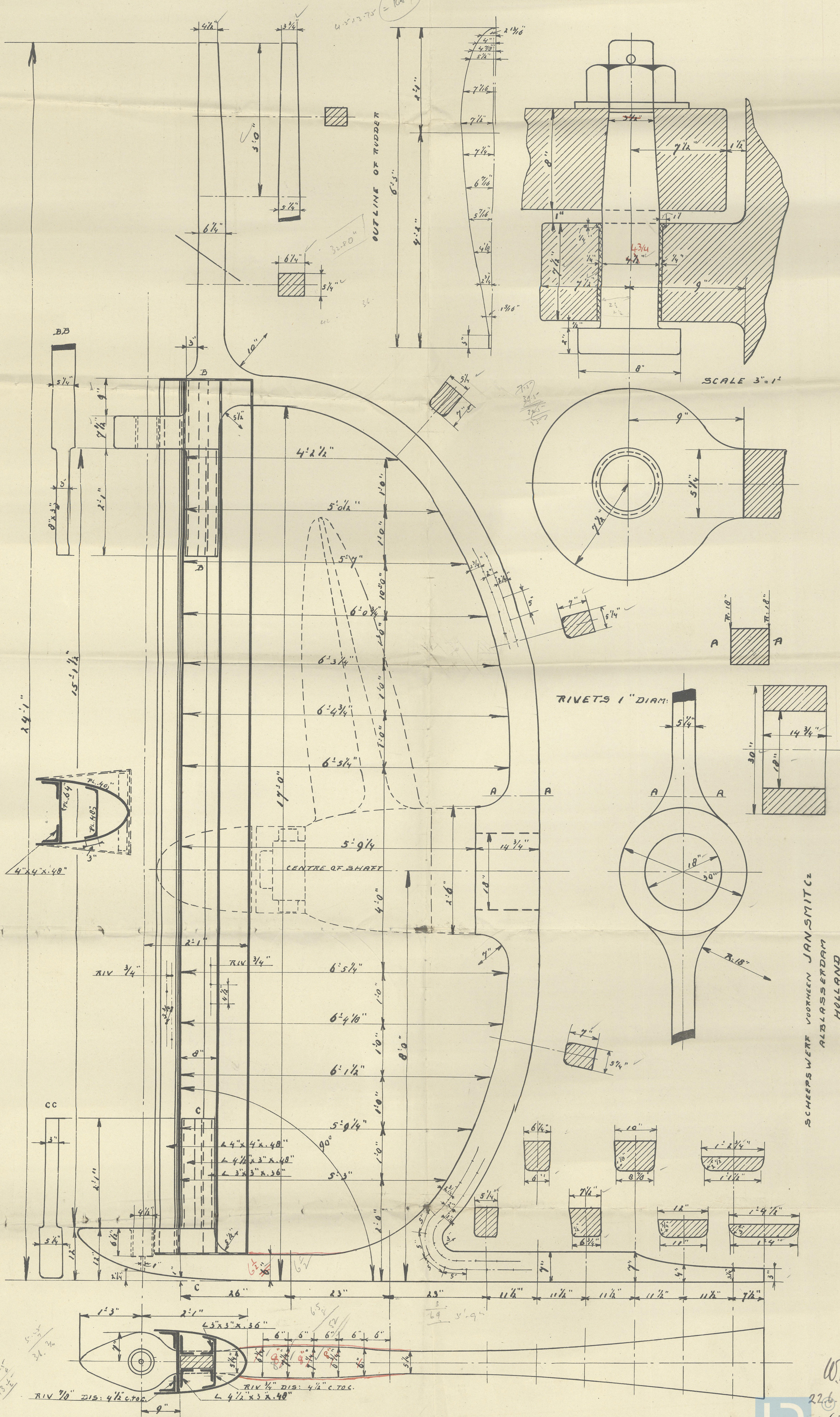


FORGED STEEL OR FORGED IRON

SCALE 1" = 1'

Office Copy



SCHEEPS WERF VOORHEEN JANSMIT & Z  
ALBLASSERDAM  
HOLLAND



Chien



© 2020

Lloyd's Register  
Foundation

003895-003905-0130



Jan Lint

Gertje Ridder. Winfrance

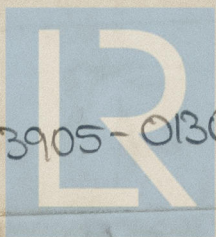
~~GEN. BOX NO 720~~

"<sup>Queen'sland</sup>  
Nijerland"

Rot Rpt 17214

Queen'sland \*

S/R.I.



© 2020

003895-003905-0130

Lloyd's Register  
Foundation