

## Lloyd's Register of Shipping.

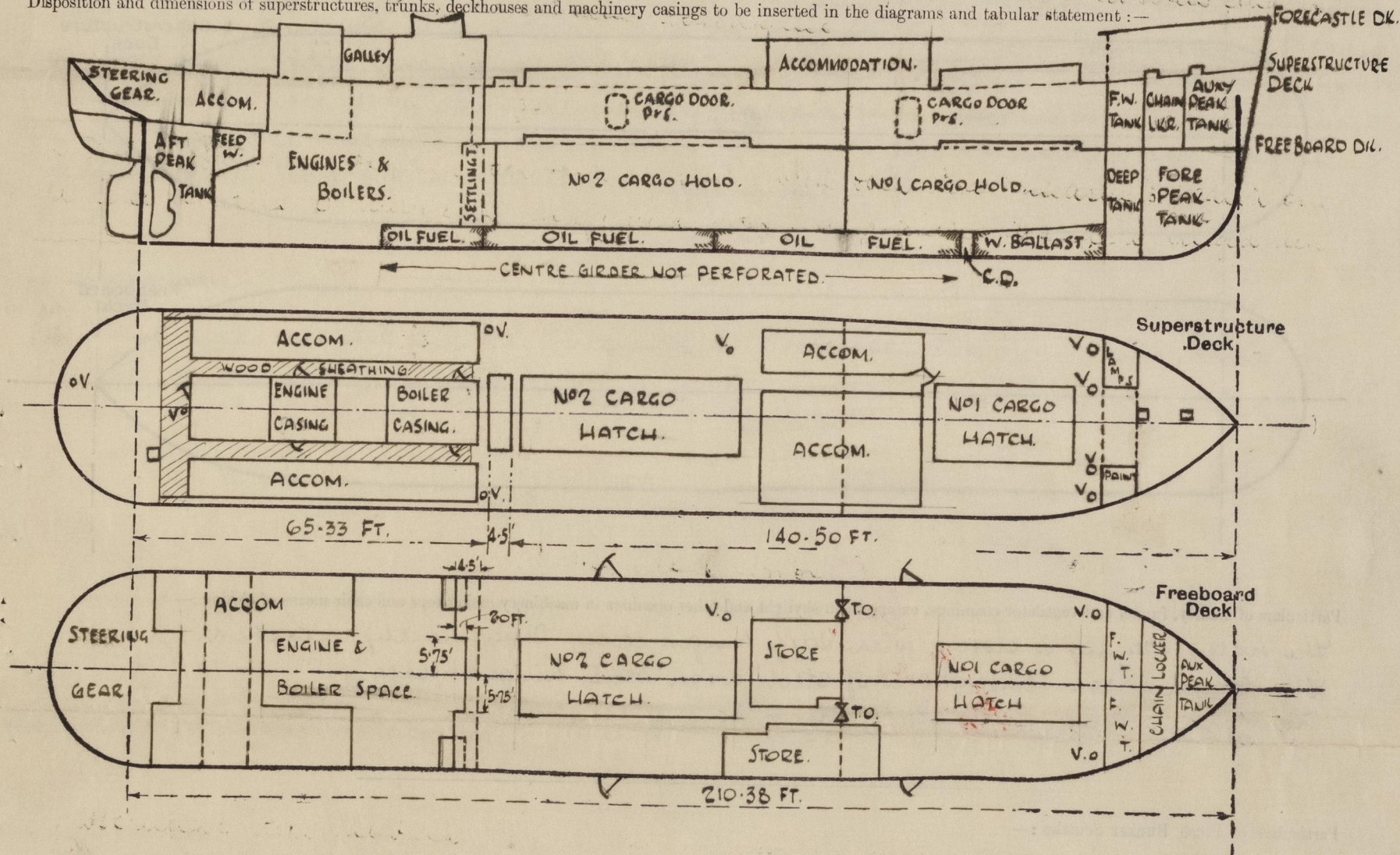
## SURVEYS FOR FREEBOARD.

(CONDITIONS OF ASSIGNMENT.)

"JALABALA"

Ship's Name **EMPIRE PASSMORE.**Port of Survey **NEWCASTLE-ON-TYNE BLYTH.**Official Number **165023**Surveyor's Signature **W.T. Barnard**Nationality and Port of Registry **BRITISH. BLYTH.**Date of Survey **WHILST BUILDING. 1945-1946.**

Disposition and dimensions of superstructures, trunks, deckhouses and machinery casings to be inserted in the diagrams and tabular statement:—



Particulars of Superstructures, Trunks, Casings, Deckhouses.

	Coaming	Plating	Stiffeners	Spacing	End Attachments of Stiffeners	Size of Openings	Height of Sills	Height of Casings
Poop Bulkhead ...	.26"	.26"	5" x 2 1/2" x 24" & .26 B.A.	27 1/2" TO 30"	NIL	NIL	NIL	7.58 FT.
Raised Quarter Deck Bulkhead ...	NONE							
Bridge, After Bulkhead ...								
Bridge, Forward Bulkhead ...								
Forecastle Bulkhead ...	NONE							
Trunk, Aft ...								
Trunk, Forward ...	NOT APPLICABLE.							
Exposed Machinery Casings on Freeboard or Raised Quarter Decks ...								
Exposed Machinery Casings on Superstructure Decks ...	.30"	3" x 2 1/2" x 30" O.A.	24"	BKT. AT TOP.	4-11" x 2-0" (2P & 2S)	8' 18"	7.50 FT.	
Machinery Casings within Superstructures not fitted with Class I Closing Appliances ...	NOT APPLICABLE			ONE	ABOUT	30	ABOUT	
Deckhouses on Flush Deck Ships ...	NOT APPLICABLE			THREE	ABOUT	130	ABOUT	

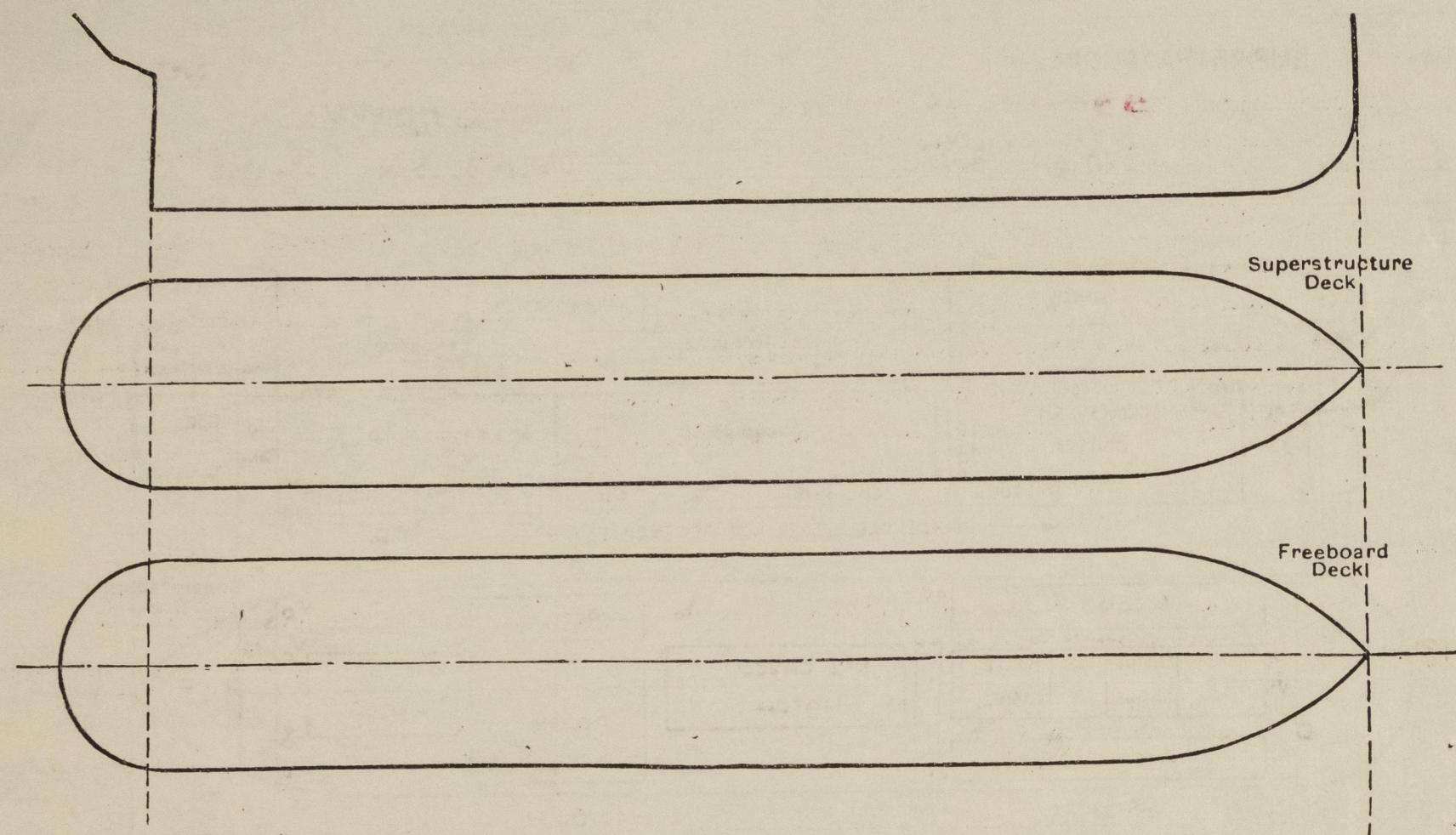
Particulars of Closing Appliances (state if capable of being manipulated from both sides).

Poop Bulkhead ...	NO OPENINGS.	AS BEYOND EACH, AND REACHED TO LOWER EDGE OF DECK.
Raised Quarter Deck Bulkhead ...	NONE	
Bridge, After Bulkhead ...		
Bridge, Forward Bulkhead ...		
Forecastle Bulkhead ...	NONE	
Exposed Machinery Casings on Freeboard or Raised Quarter Decks ...		
Exposed Machinery Casings on Superstructure Decks ...	STEEL DOORS HINGED, CAPABLE OF BEING MANIPULATED FROM BOTH SIDES.	
Machinery Casings within Superstructures not fitted with Class I Closing Appliances ...	NOT APPLICABLE	
Deckhouses on Flush Deck Ships ...	NOT APPLICABLE	



# PARTICULARS OF PROTECTION TO OPENINGS, ETC.

The following diagrams should be used to indicate the positions of cargo and coaling hatchways, gangway, cargo and coaling ports, ventilators, companionways, etc., which would affect the seaworthiness of the ship :-



Particulars of fiddle, funnel and ventilator coamings, engine room skylight and other openings in machinery casing tops and their means of closing :-

The fiddle opening is closed with steel hinged covers, permanently attached.  
The engine room skylight is of steel with steel hinged flaps.  
The funnel and ventilators are of strong construction.

Particulars of Flush Bunker Scuttles :-

Nil

Particulars of Companionways :- To Aft Tween Bds Accom. Substantial steel deckhouse staff engine casings. Stowway 4'9" x 2'0" 1'6" coaming. Hinged hardwood door 1'4" thick manipulated both sides.  
To Tween Bds Store Amidships. Substantial steel bridge deckhouse on superstructure deck. Stowways 2 off. (1 at 4'10" x 2'3" 1 at 4'10" x 2'0", 1'9" coamings) Hinged hardwood doors 1'4" thick manipulated from both sides.

Particulars of Ventilators in exposed positions on freeboard and superstructure decks :- All on Superstructure Deck.

Two at 13" dia to hot cargo hold. Coaming 10'3" x 3'4"; (3'0" above fore ak. wheel to fore ak.)  
Two at 12" dia to hot cargo tween. do do  
One at 7" dia to store amidships. Coaming 2'9" x 3'0"  
One at 22" dia to hot 2 cargo hold. do 2'9" x 4'0"  
One at 18" dia to hot 2 cargo tween. do do  
Two at 14" dia to do do 2'9" x 3'6"  
One at 9" dia to after accom. do 2'6" x 3'2"  
One at 6" dia to steering gear. do 2'9" x 3'2"

One 5" dia goose-neck vent 2'6" high to opening to store amidships; fitted with wood plug.

All ventilator coamings fitted with wood plugs and canvas covers.

Particulars of Air Pipes in exposed positions on freeboard, raised quarter, or superstructure decks :-

One at 3" to dunnage for peak tank and one at 3" to fore peak tank  
Two P and two S at 2" to fore fresh water tanks  
One P and S at 2 1/2" to hot W.B. double bottom tank  
One P and S at 2" to double bottom copper tank  
Four P and four S at 3" to hot 2 and 3 oil fuel double bottom tanks  
One P and S at 2" to feed water tanks  
One P only at 2 1/2" to aft peak tank  
all the above about 18" to 22" above deck to opening with a 3/8" dia. shifter hole in top of each air pipe head, except those to O.F. tanks  
One P and S at 3 1/2" to oil fuel settling and hot oil fuel S.B. tanks about 38" above deck to opening. Heba supported by frame of after deckhouse.

all air pipe heads fitted with wood plugs and/or close mesh wire gauze.

Particulars of Gangway Cargo and Coaling Ports :-

Cargo Ports. 2 Port and 2 Starboard, in cargo tween decks. Each opening 5'1" x 3'6" closed by hinged steel door 1/40" thick, stiffened. Secured by 8-1" dia toggles fitted inside. Bottom of openings 12" above freeboard deck.

Particulars of Scuppers and Sanitary Discharge Pipes :-

Superstructure Deck. Scuppers led through shell below superstructure deck P.T. Scuppers and sanitary discharges from spaces on superstructure deck led through shell above freeboard deck Port Starboard with storm valve on shell in each case.  
On Freeboard Deck. aboat tonnage hatch a 5" scupper fitted P.T. through shell just above freeboard deck, and with screw down valve at shell operated from superstructure deck.  
From hot 1 and 2 cargo tween decks 2" pipe scuppers (2P and 2S) fitted to drain to bilge and in each case fitted with screw down valve below freeboard deck, operated from superstructure deck.  
Steering Gear space drained to cruiser stem space by 1 1/2" pipe having brass screw plug at freeboard deck. Plug fitted with chain attachment.  
X with indicators showing whether valve is open or shut.

Particulars of Side Scuttles :-

In tween decks aft Port and Starboard and in tween deck store amidships, starboard only. All side scuttles 10" diameters and fitted with permanently attached hinged deadlights.

Vertical distance of Sill of lowest Side Scuttle above top of keel 19'6" feet (approx).

Particulars of Guard Rails :-

Substantial steel bulwark, efficiently stayed, on superstructure deck, heights as below.  
Guard Rails on Forecastle deck 3'3" high, 3 rails, stanchions about 4'6" apart.

Particulars of Gangways, Lifelines, etc. :-

Nil

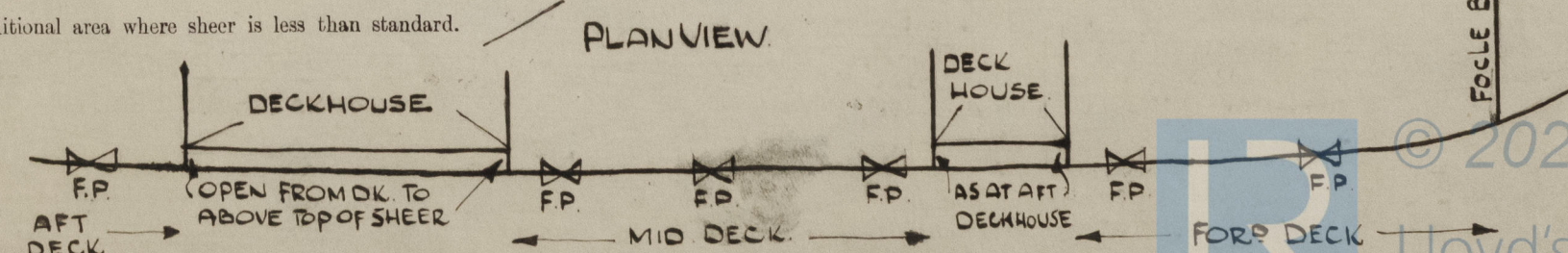
## Particulars of Freeing Arrangements. (ON SUPERSTRUCTURE DECK).

	Length of Bulwark	Height of Bulwark	Size of Freeing Ports	Number each side	Area each side (SQ FT)	Rule area each side (SQ FT)
After W.H. DECK	ABOUT 20 FT FROM STEERN.	3'-5"	1 @ 4'-10" x 9"	ONE	ABOUT 3 1/2"	ABOUT 4 1/4
MID DECK	62.83 FT.	3'-5"	3 @ 6'-0" x 9"	THREE	ABOUT 13 1/2"	ABOUT 6 1/2
Forward W.H. DECK	29.75 FT.	ABOUT 3'-8" (MEAN)	1 @ 6'-0" & 1 @ 5'-9" x 9"	TWO	ABOUT 8 3/4	ABOUT 4 3/4

State position of each freeing port ... (After W.H. DECK) AS BELOW. EACH 11" ABOVE DECK TO LOWER EDGE, FORD. DK; (F. and A. position and height above deck edge) (Forward W.H. DECK) AND 8" REMAINDER.

State whether the freeing ports are fitted with shutters, bars, or rails, and give particulars of such :- NONE.

Additional area where sheer is less than standard.



© 2020

Lloyd's Register Foundation

0352 2/2



# PARTICULARS OF PROTECTION TO OPENINGS, ETC.

HATCHWAYS ON FREEBOARD AND SUPERSTRUCTURE DECKS.									
← FREEBOARD DK →					← SUPERSTRUCTURE DK →				
Description of Hatchway	NO1 CARGO	NO2 CARGO	NO1 CARGO	NO2 CARGO	TONNAGE	FORE PEAK	CHAIN LOCKER	STEERING GEAR	
Dimensions of Hatchway	28'x14'	52'x14'	28'x14'	52'x14'	4'6"x14'0"	2'0"x2'0"	2'0"x2'0"	2'6"x2'6"	
COAMINGS	Height above Deck	9" B.A.	9" B.A.	30"	30"	12" B.A.	18"	20"	16"
	Thickness	.40"	.40"	.44x.40"	.44x.40"	.50"	.30"	.30"	.32"
	Stiffeners	NIL	NIL	SEE SKETCH	NIL	NIL	NIL	NIL	NIL
	Brackets, Stays	NIL	NIL	TWO P&S 2" DIA.	FIVE P&S 2" DIA.	NIL	NIL	NIL	NIL
HATCH BEAMS	Number	FIVE	TEN	FIVE	TEN	NIL	NIL	NIL	NIL
	Spacing	4'-8"	4'-8 3/4"	4'-8"	4'-9 1/4"	NIL	NIL	NIL	NIL
HATCH BEAMS	Scantling and Sketch	WEB 12"x40"	AS AT NO1 HATCHWAY	WEB 12"x40"	WEB 12"x50"	COVERS SECURED ON UNDERSIDE BY HEMP LASHINGS	COVER HINGED AND SECURED BY 2 HINGES & 7 TOGGLES. RUBBER JOINTED.	COVER HINGED & SECURED BY 2 HINGES & 7 TOGGLES. RUBBER JOINT	COVER HINGED & SECURED BY 2 HINGES & 7 TOGGLES. RUBBER JOINT
	Bearing Surface	3 1/2"	3 1/2"	3 1/2"	3 1/2"				
FORE AND AFTERS	Number								
	Spacing								
	Unsupported Lengths								
	Scantling and Sketch								
HATCH COVERS	Material	WOOD	WOOD	WOOD	WOOD	WOOD	STEEL	WOOD	STEEL
	Thickness	2 1/2"	2 1/2"	2 1/2"	2 1/2"	2 1/2"	.32"	1 1/2"	.32"
	How fitted	F&A	F&A	F&A	F&A	F&A	-	DOUBLE COVER	-
	Bearing Surface	2 1/2"	2 1/2"	2 1/2"	2 1/2"	2 1/2"	-	1 1/2"	-
Spacing of Cleats	NOT EXCEEDING 24"				NIL	NIL	2 EACH SIDE	NIL	
Number of Tarpaulins	ONE				NIL	NIL	TWO	NIL	
<p>*Are wood fore and afters steel shod at all bearing surfaces? NO FORE AND AFTERS.</p> <p>Are battens and wedges efficient and in good condition? YES.</p> <p>Are tarpaulins in good condition and in accordance with rule requirements? YES.</p> <p>Are lashings provided in accordance with rule requirements? YES.</p>									

Particulars of any special features:—

Endorsement at first survey and at surveys for renewal of Certificate:—

The fittings and appliances are in accordance with the particulars shown on this form (or as now modified) and are in good condition.