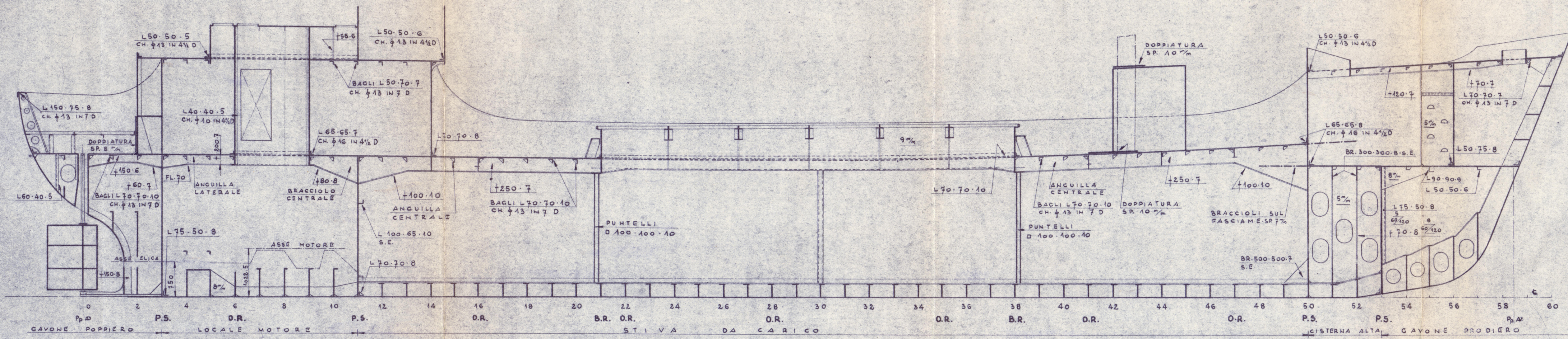
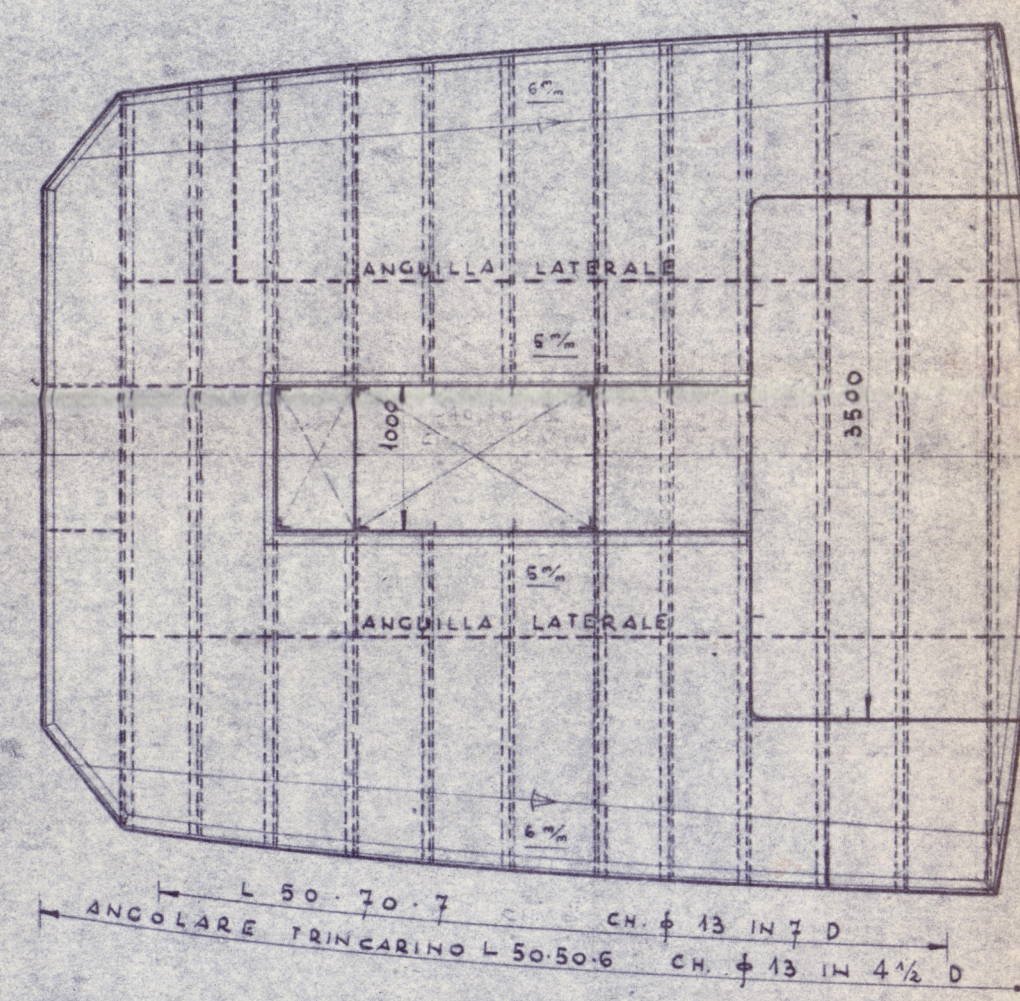


SEZIONE LONGITUDINALE



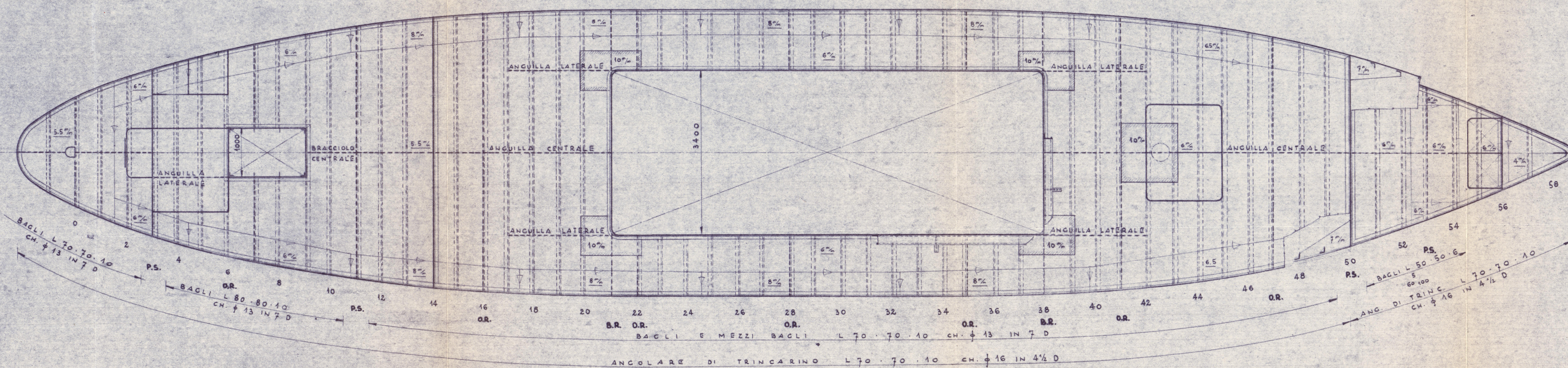
CASSERO



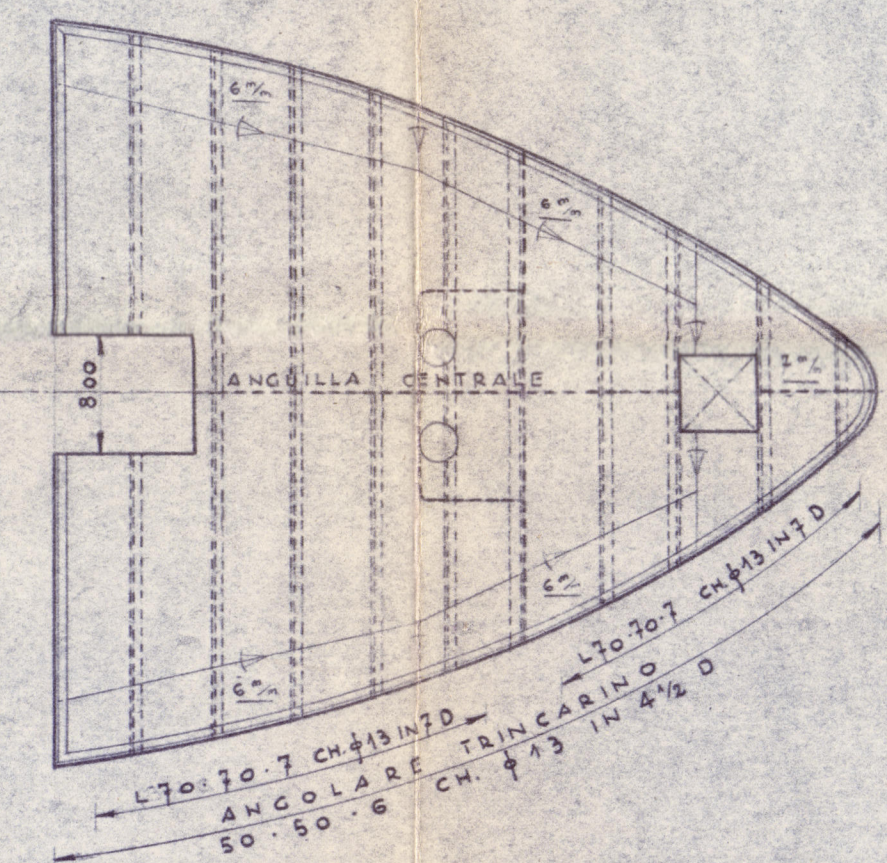
CARATTERISTICHE PRINCIPALI

LUNGHEZZA FUORI TUTTO	m 33.06
LUNGHEZZA FRA LE PP	- 30.500
LARGHEZZA F.D.	- 5.860
ALTEZZA IN FIANCO AL MEZZO	- 2.820
IMMERSIONE DI COSTR.	- 2.520
PORTATA	- Tonn. 210
INTERVALLI ORD.	520 mm
BOLZONE	425 mm

COPERTA

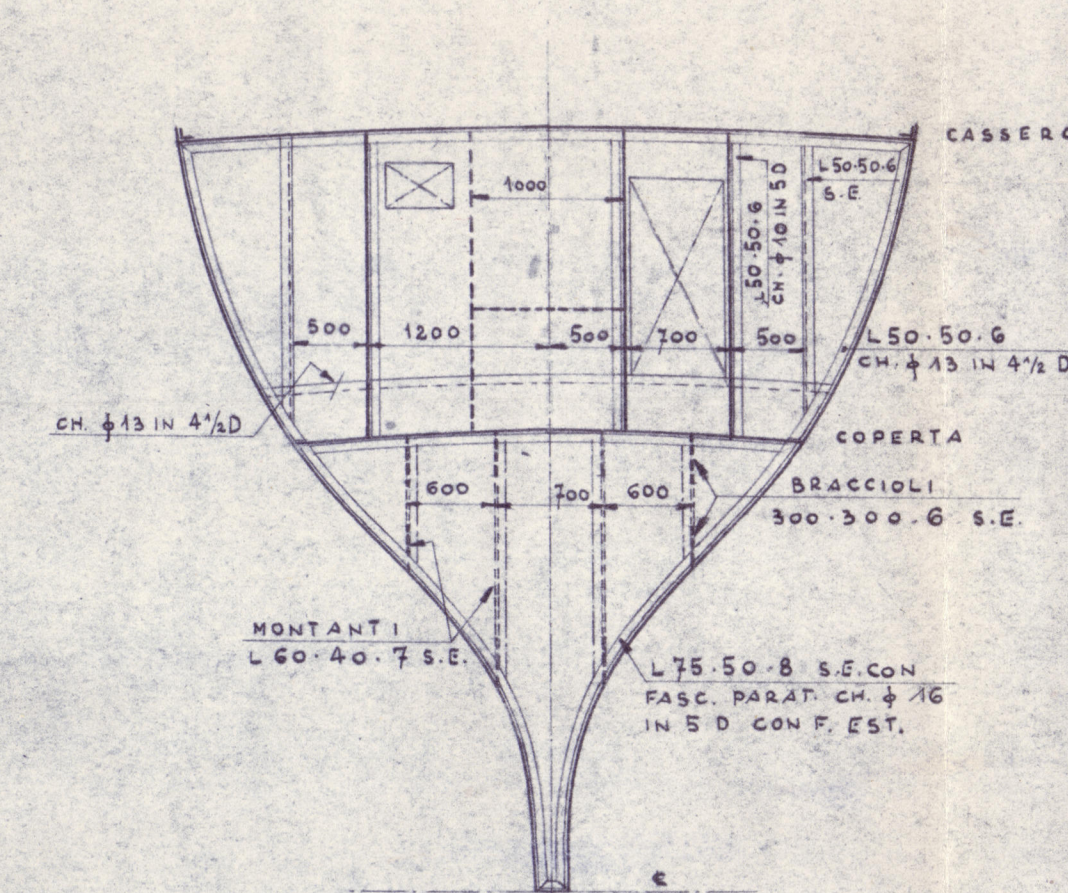


CASTELLO



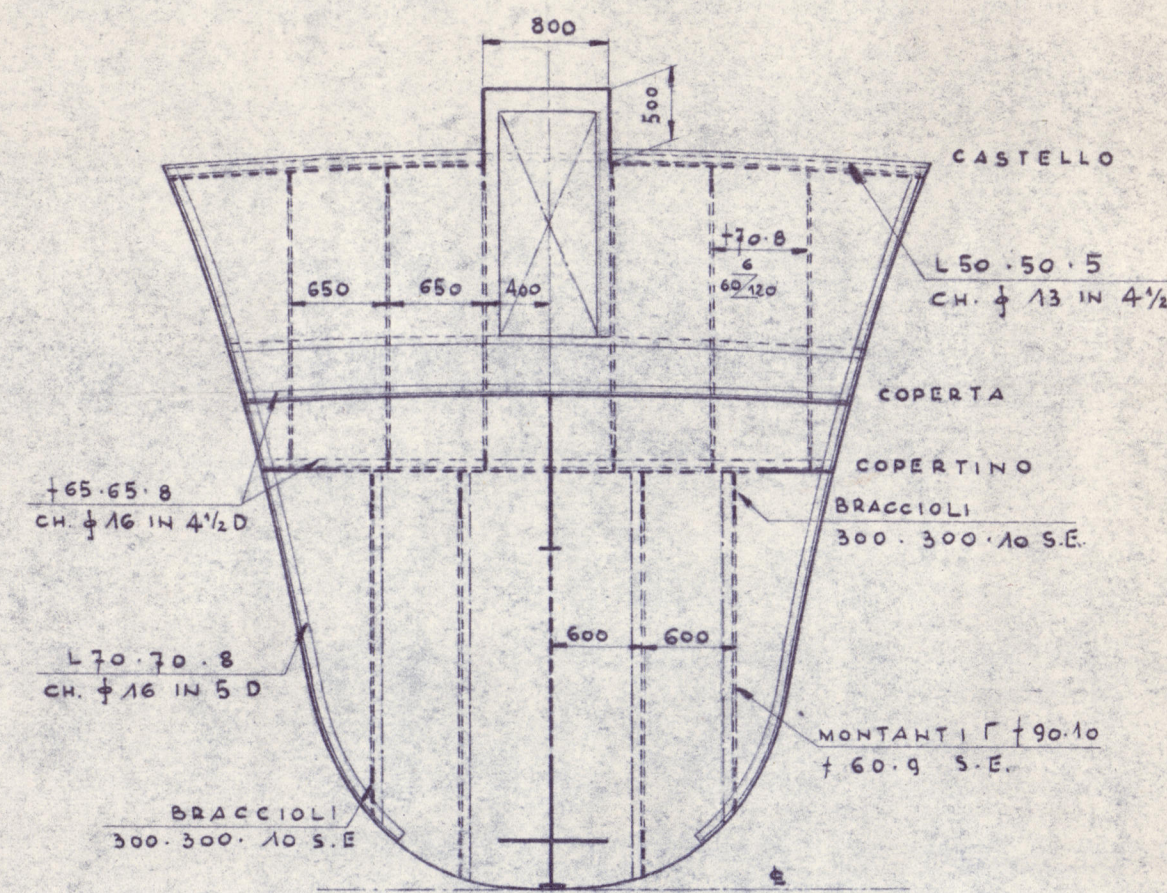
PARATIA STAGNA ORD. 3

VISTA DA PRORA
1:50



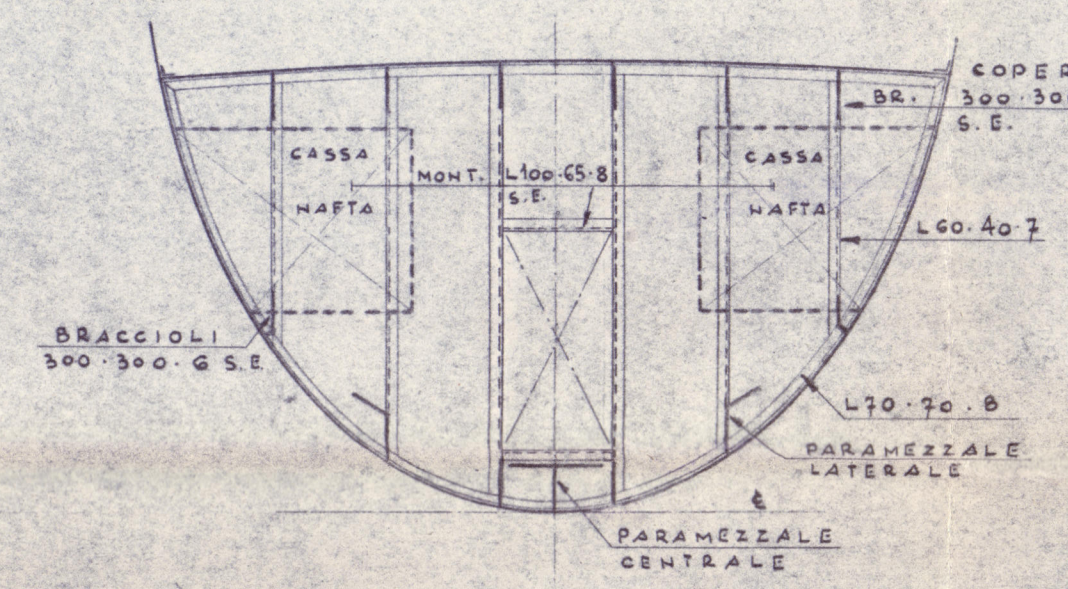
PARATIA STAGNA ORD. 50

VISTA DA POPPA
1:50



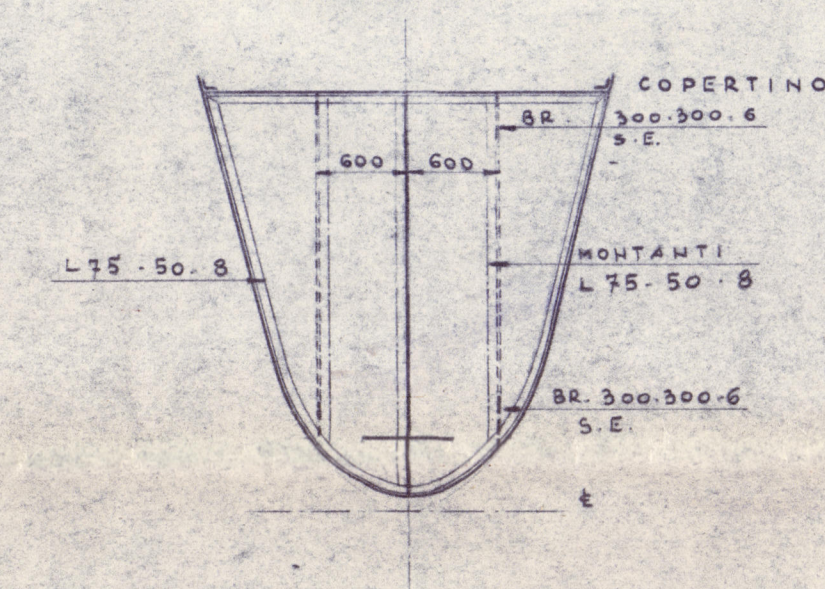
PARATIA STAGNA ORD. 44

VISTA DA PRORA
1:50



PARATIA STAGNA ORD. 53

VISTA DA POPPA
1:50



PARATIA FRONTALE ORD. 44

VISTA DA PRORA
1:50

