

LLOYD'S REGISTER OF SHIPPING

UNITED WITH THE BRITISH CORPORATION REGISTER

35633

ALTERATIONS TO CONDITIONS OF ASSIGNMENT OF LOADLINES

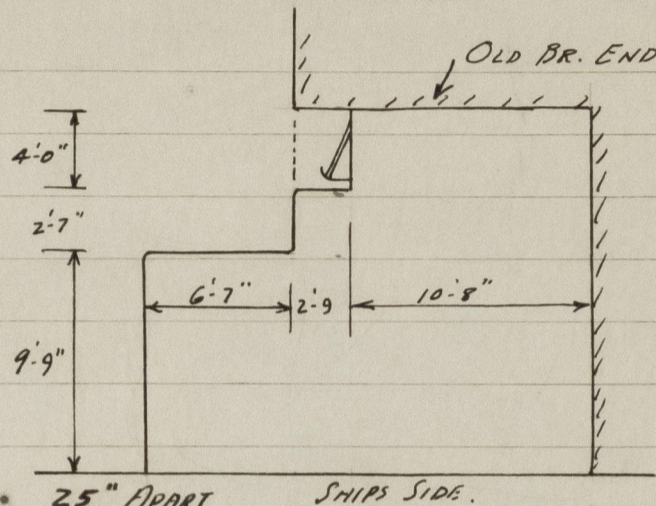
Ship's Name WINNEBAOfficial No. 166 451Port of Registry Liverpool.This ship has been under survey at Antwerp.

on June 1957 and the following alterations to the conditions of assignment of loadlines have now been effected/~~found~~—

SUPERSTRUCTURES.

Aft end of bridge (ss) extended, as shown in sketch. The new door is the same as the old door. The bridge side scantlings are .62 plating with 160 mm x 90 mm x 15 mm O.A.R. spaced at 32" and 40" apart. Bridge end scantlings:

.36 "plating with 100 mm x 75 mm x 11 mm O.A.R. 25" APART.

Poop front.

Two wood doors (CLASS 2) replaced with two steel watertight doors (CLASS 1) operated both sides, openings 4'-6" x 2'-3" with 24" coamings. (ALL OTHER OPENINGS BLANKED OFF)

COMPANIONWAY.

Coaming and door of stairway in poop removed.

Opening protected by steel doors on poop front.

VENTILATORS.

15" Dia. C.V. at forward end of after wall (ss) trunked to bridge deck.

9-5" H.V.^S (TYPE HEADS) on bridge deck removed. (ss)

FREEING ARRANGEMENTS. (ss)

3'-0" x 1'-6" freeing port cut 25'-3" for'd of poop front to replace port blanked off by bridge extension. Port fitted with protection bar and shutter.

Antwerp

June 1957.

R. Parker

14-12" DIA. GUNMETAL SIDESCUTTLES TO ACCOMMODATION AFT BELOW FREEBOARD DECK, WITH PERMANENTLY ATTACHED HINGED DEADLIGHTS (APP PAT.)
SILL OF LOWEST SIDESCUTTLE 4'-1" BELOW FREEBOARD DECK. BETWEEN FR 10-11

R. Parker

Noted
ARL
27-9-57

A copy of this Report has been placed on board.