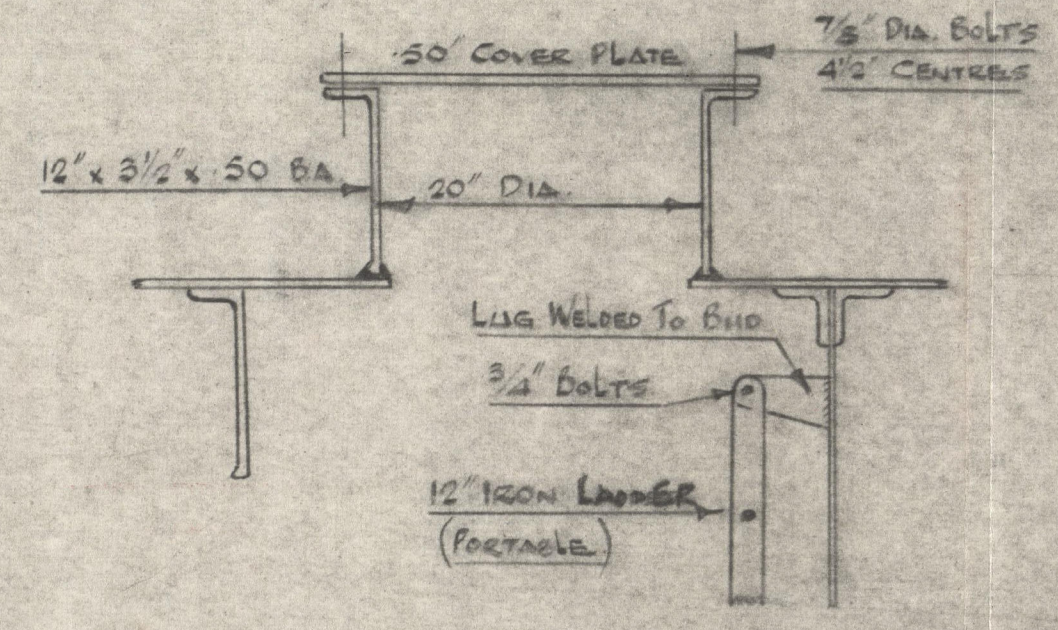
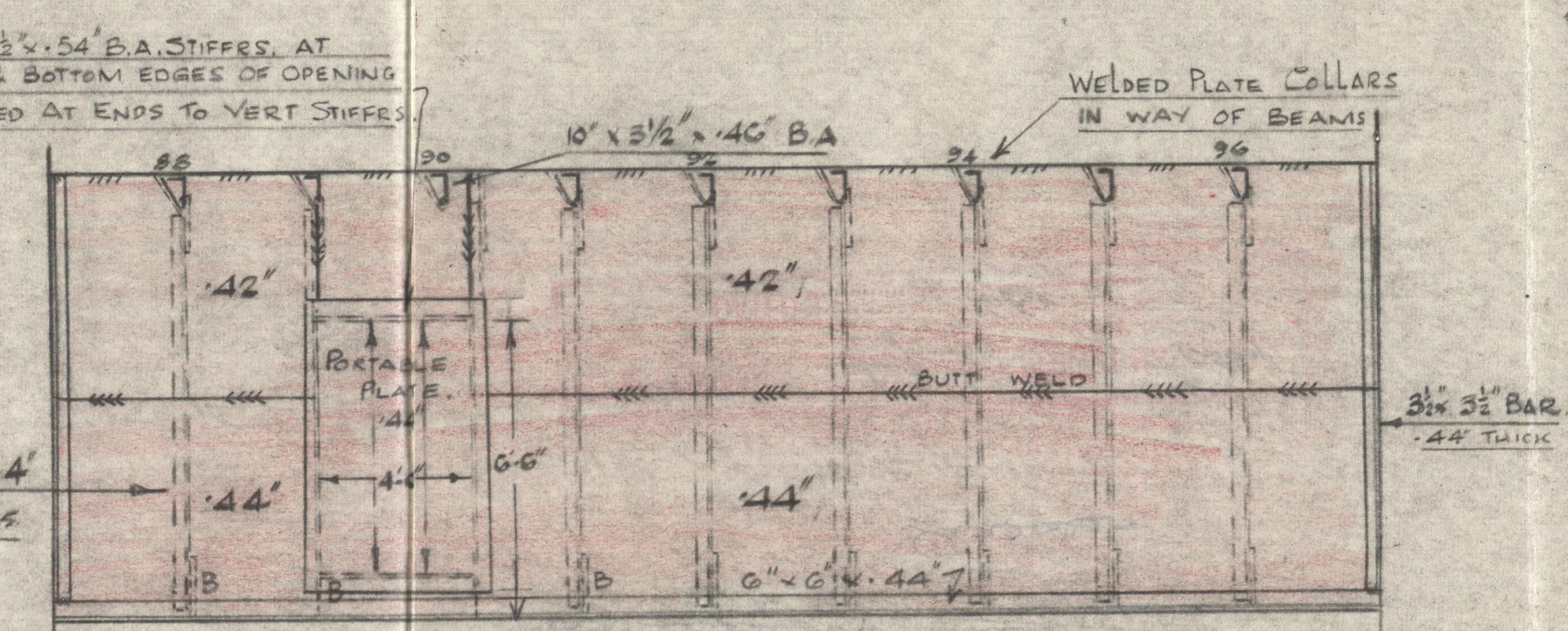
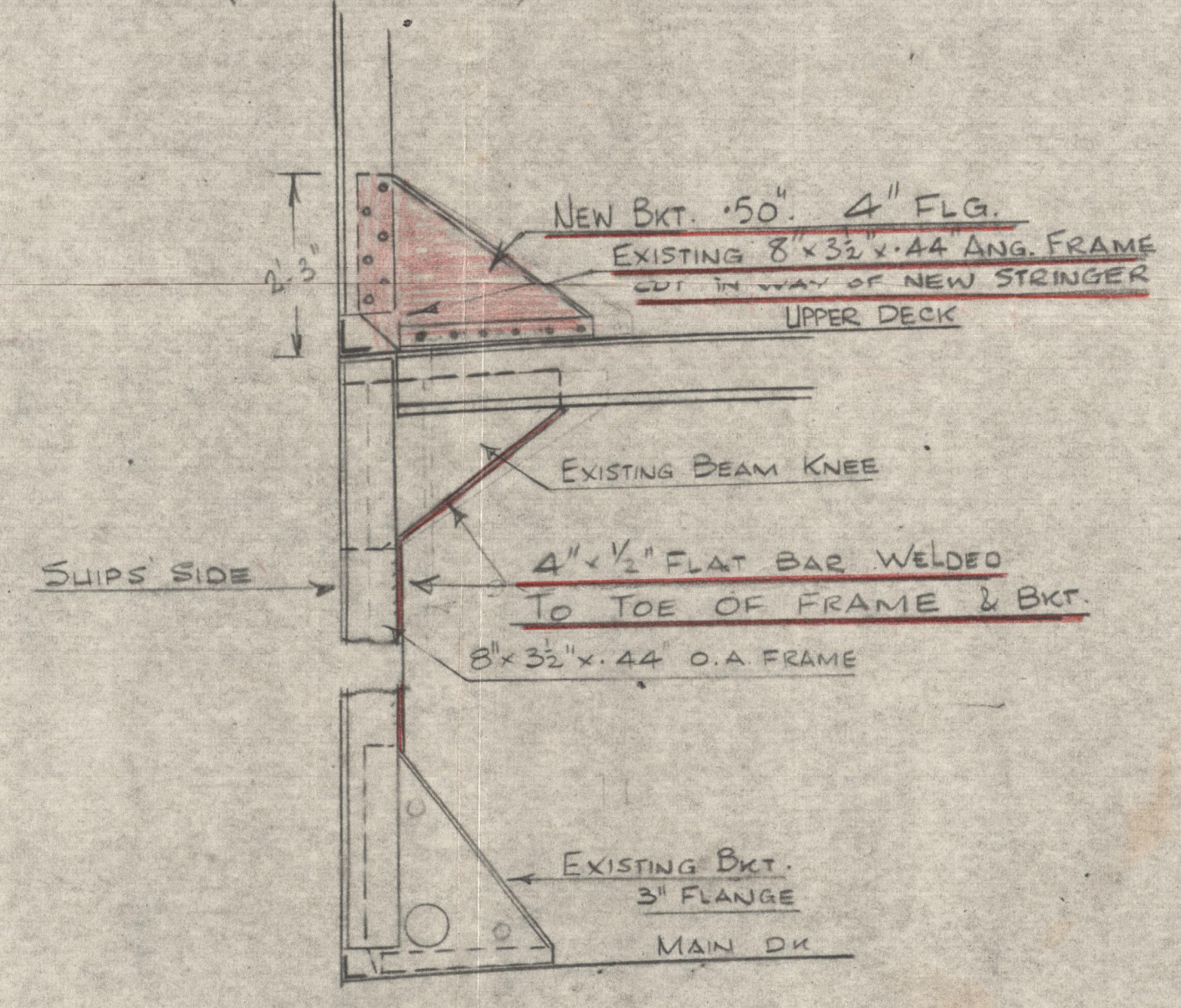
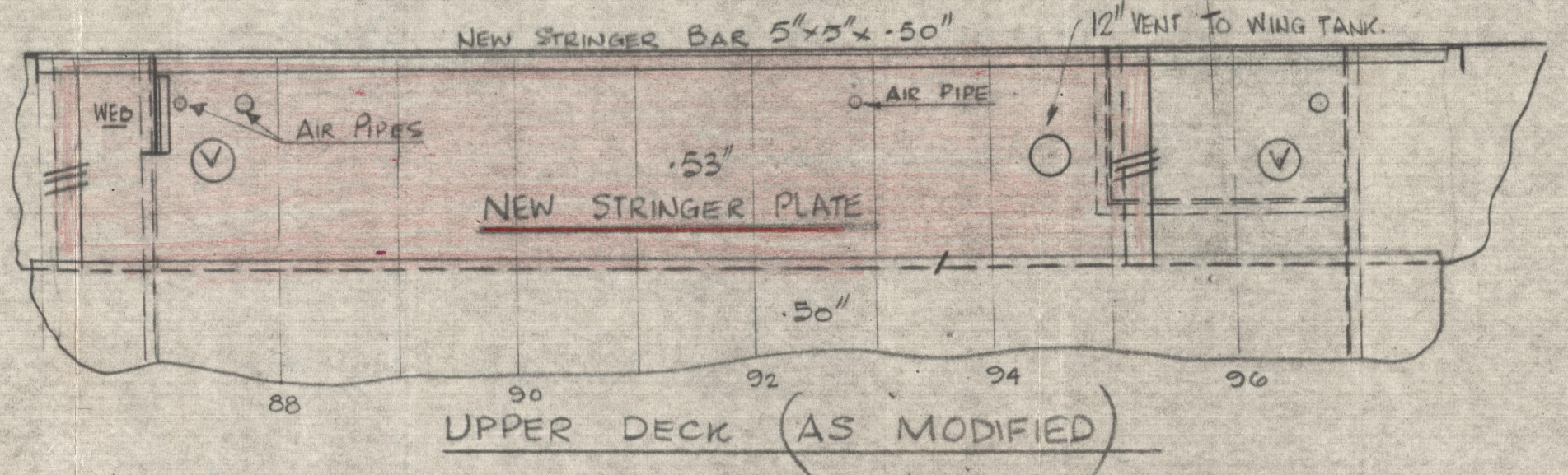
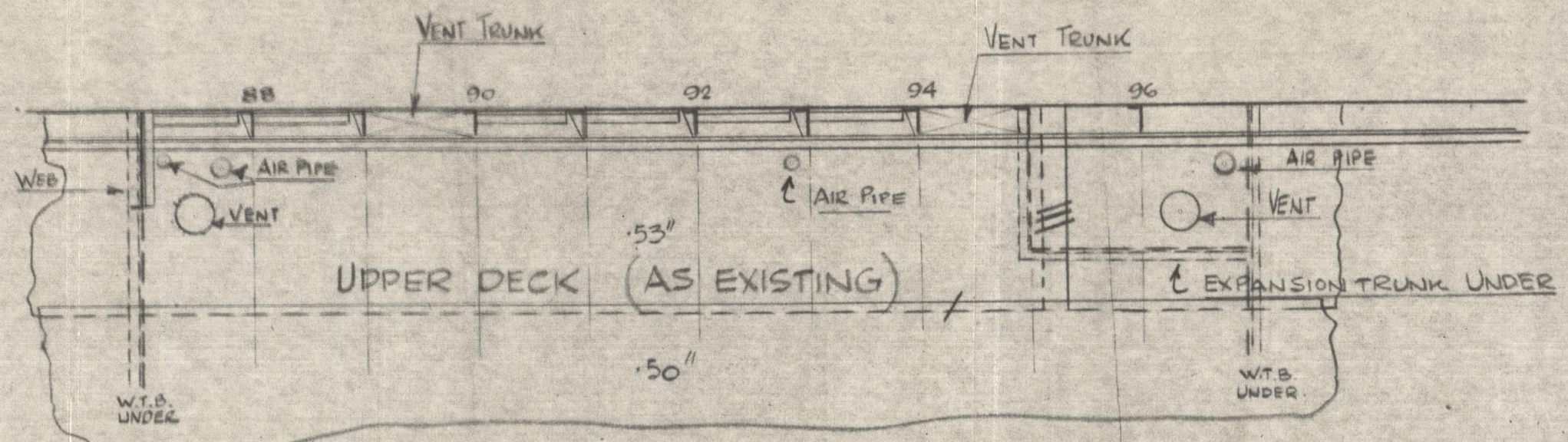
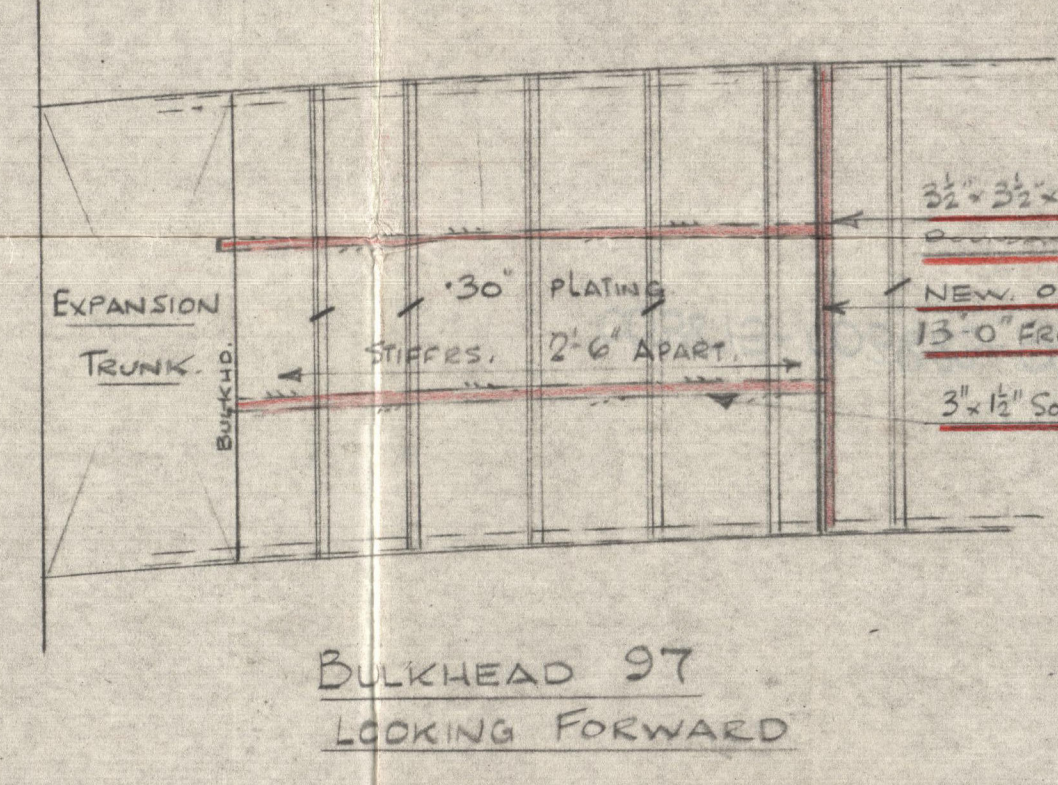
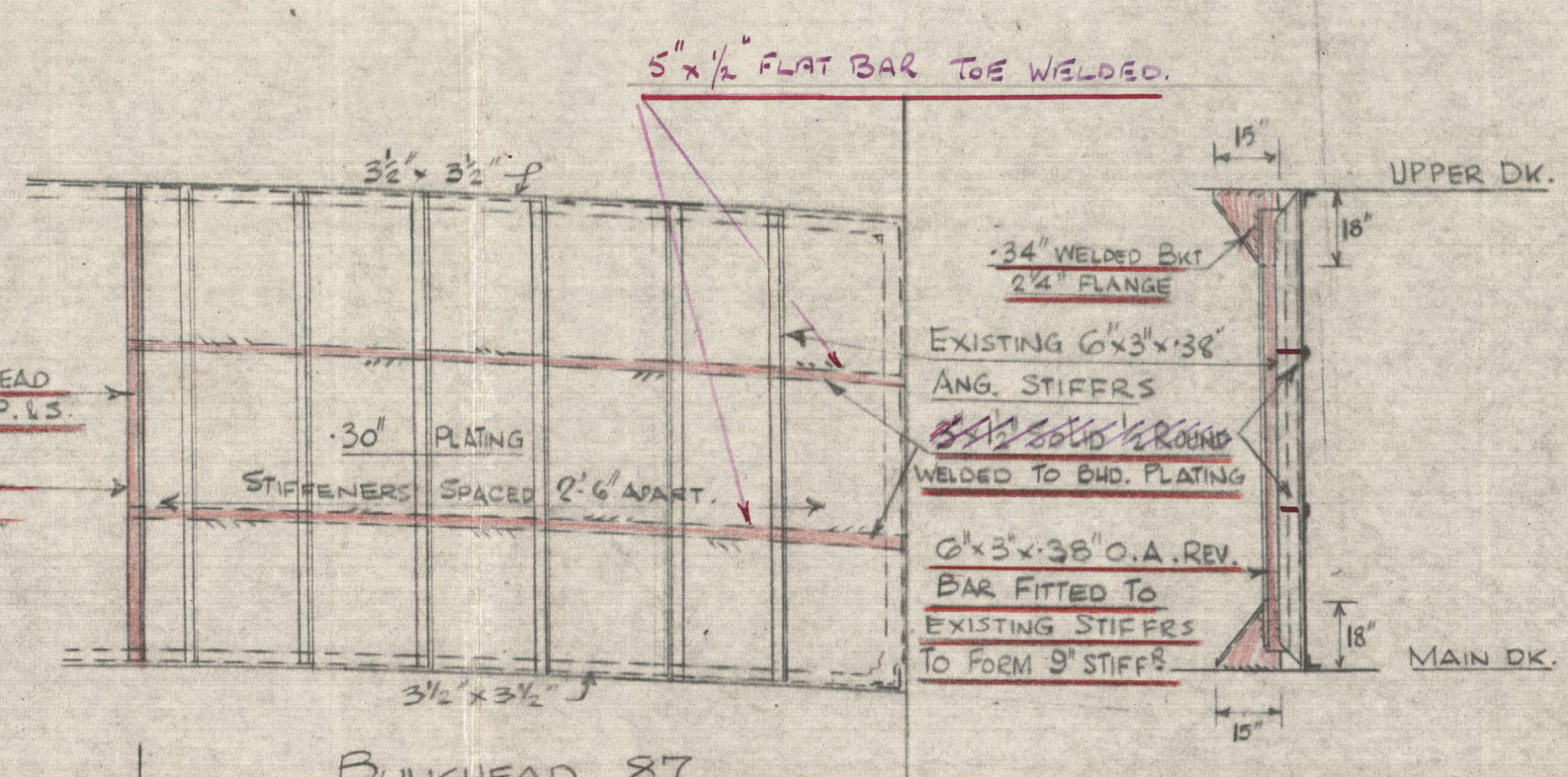
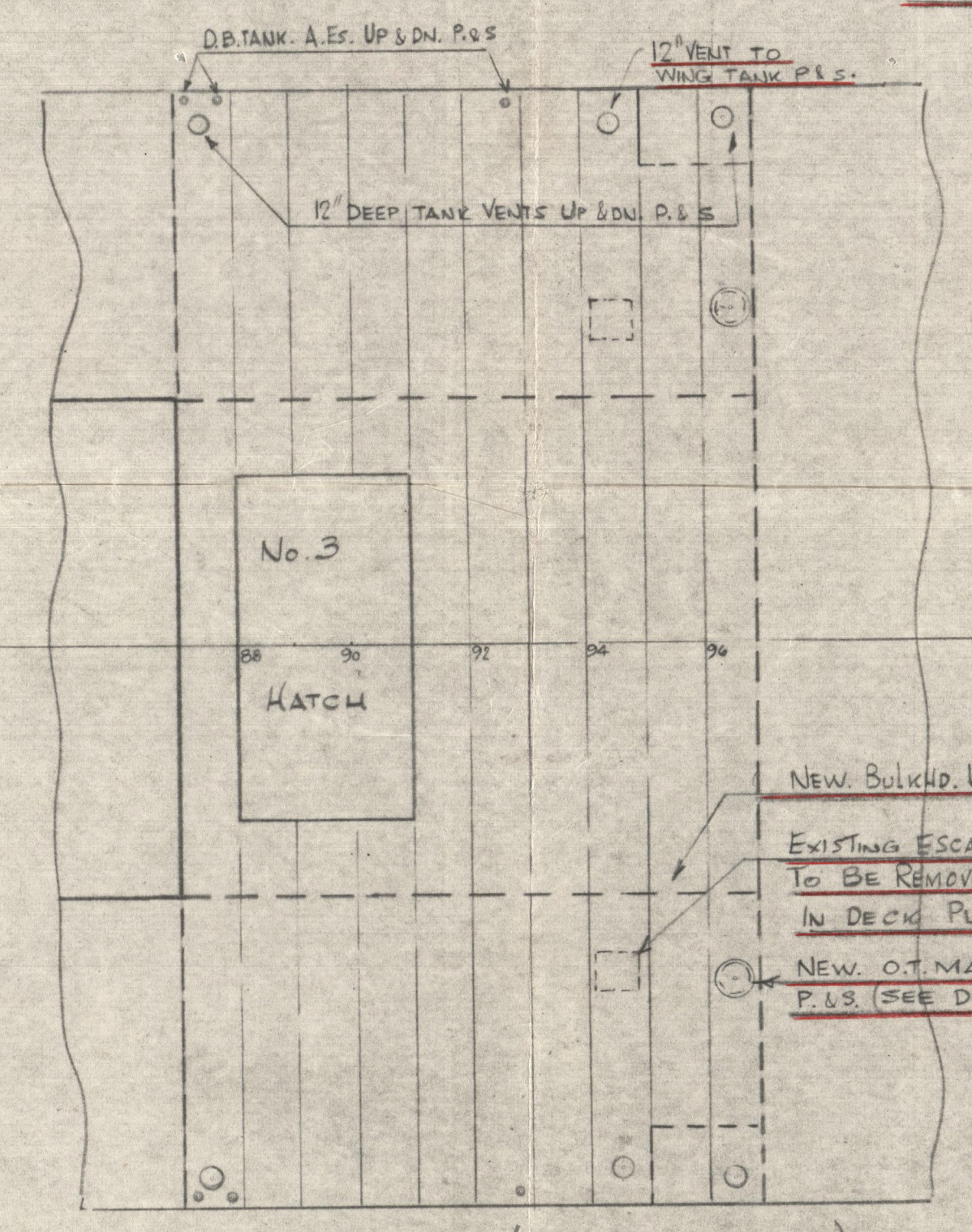
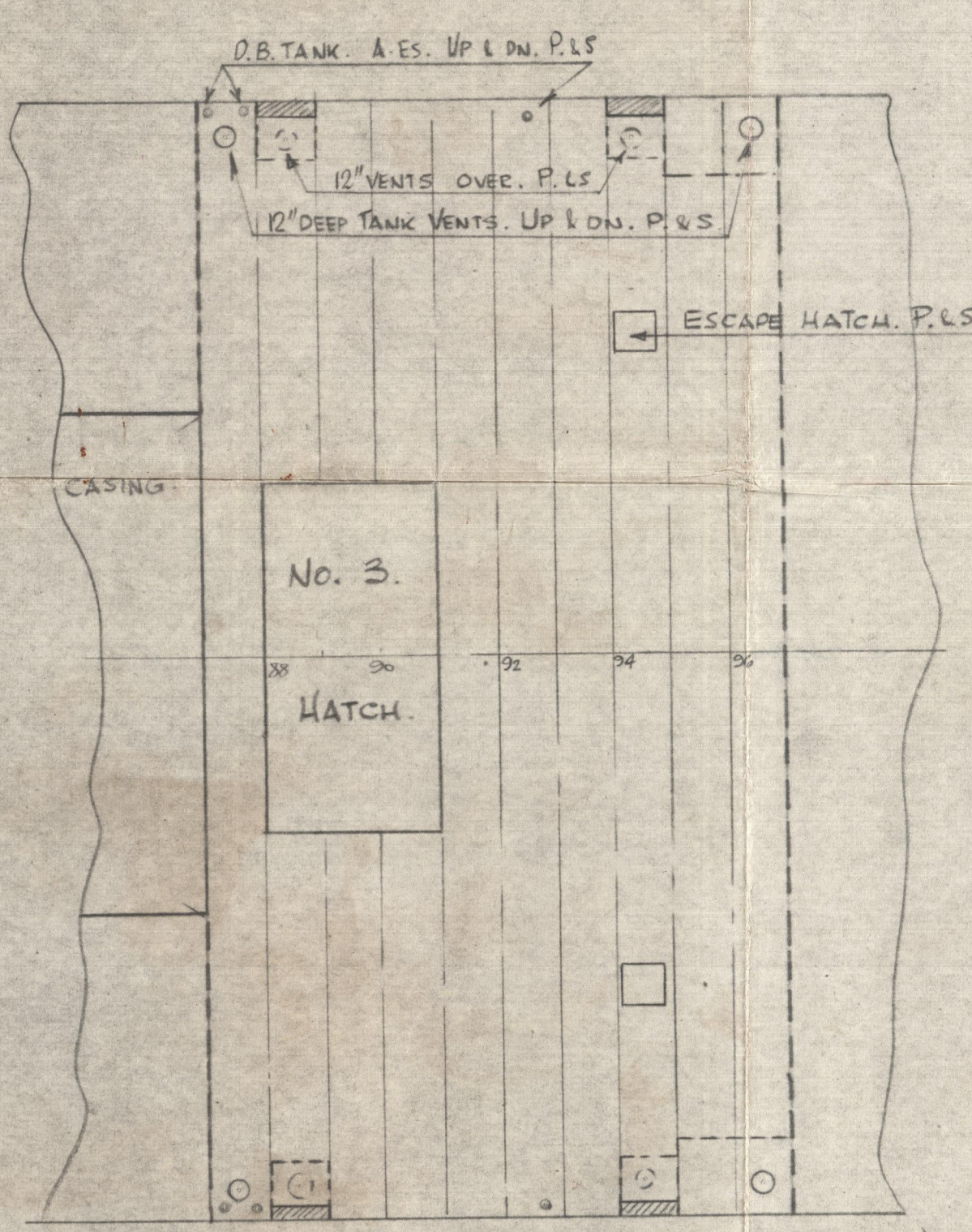
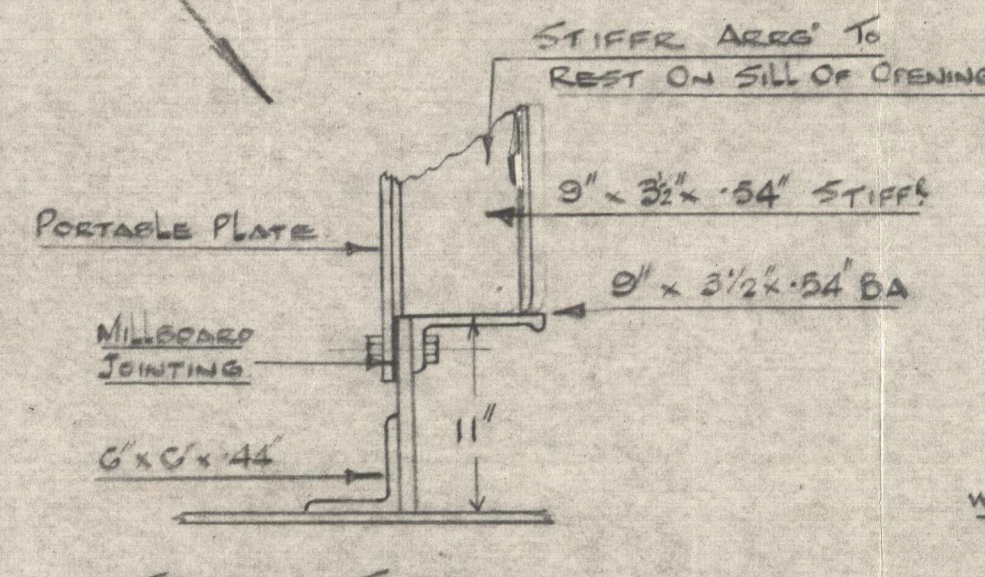
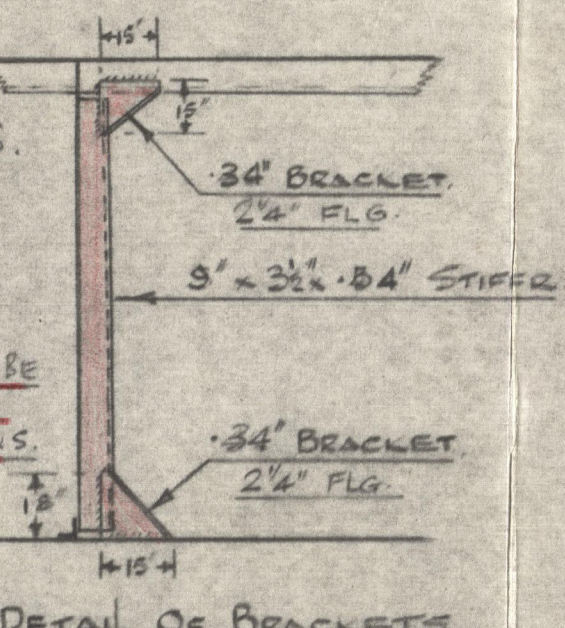
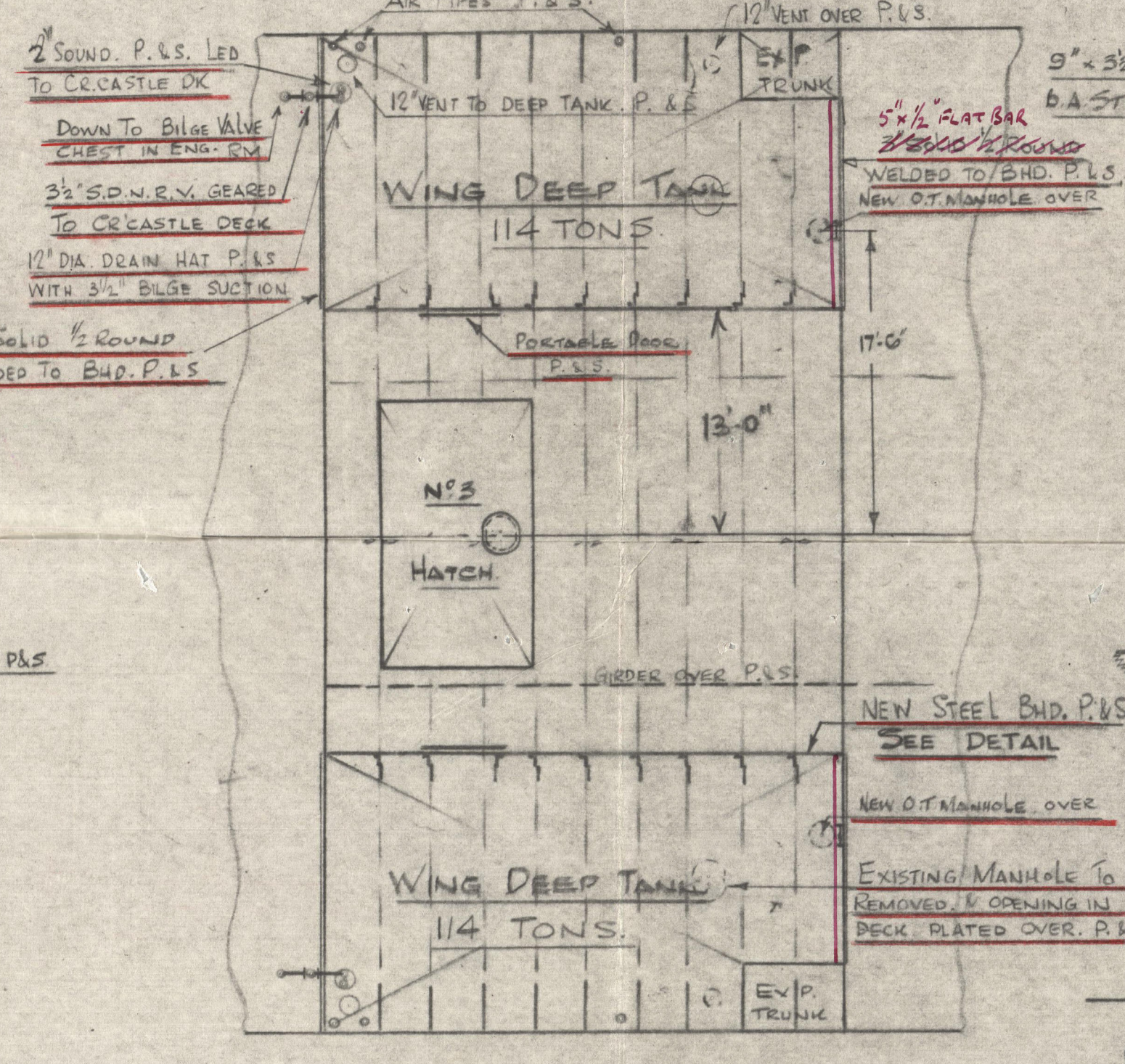
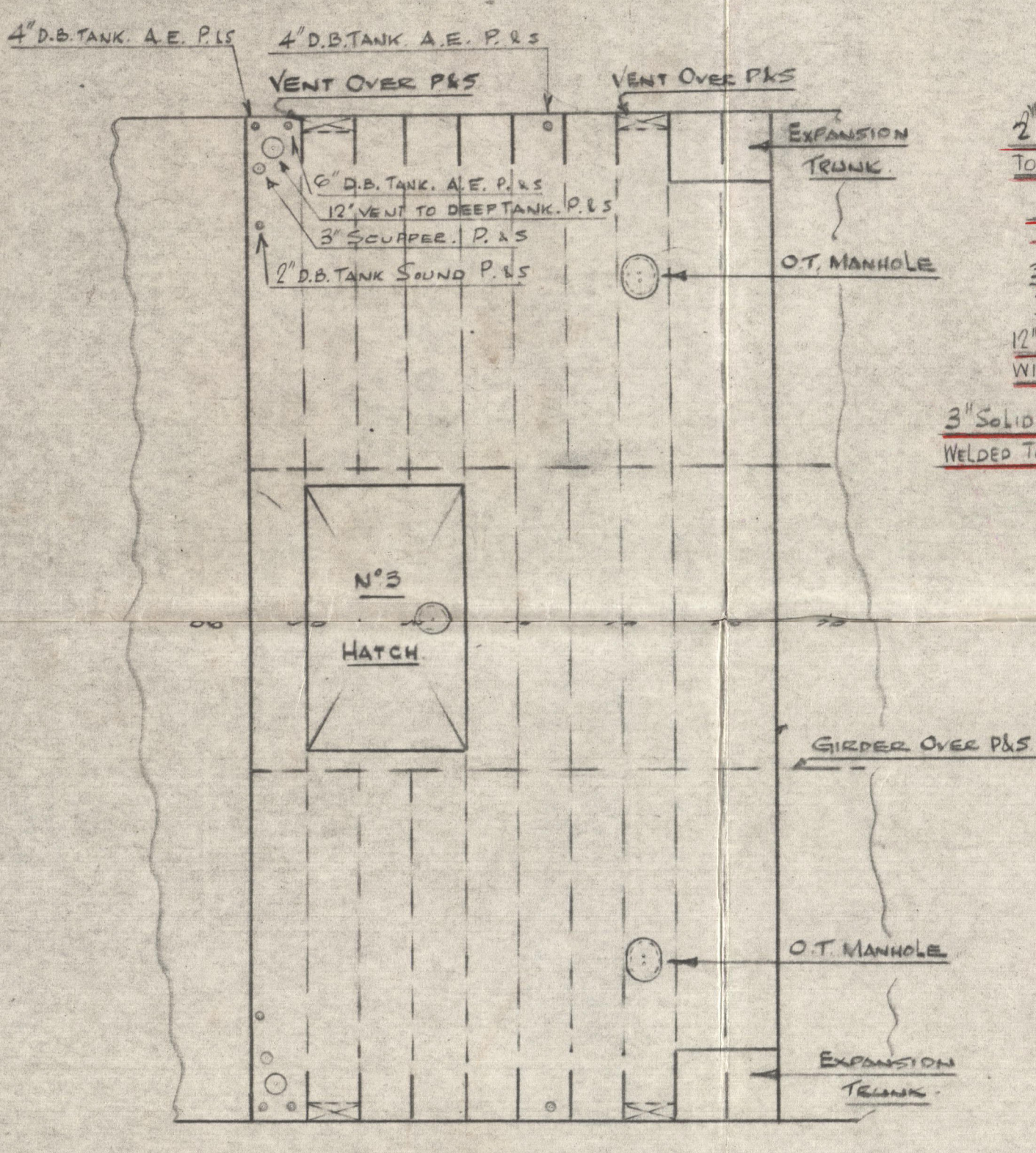


# M.Vs. "IDOMENEUS" & "ORESTES"

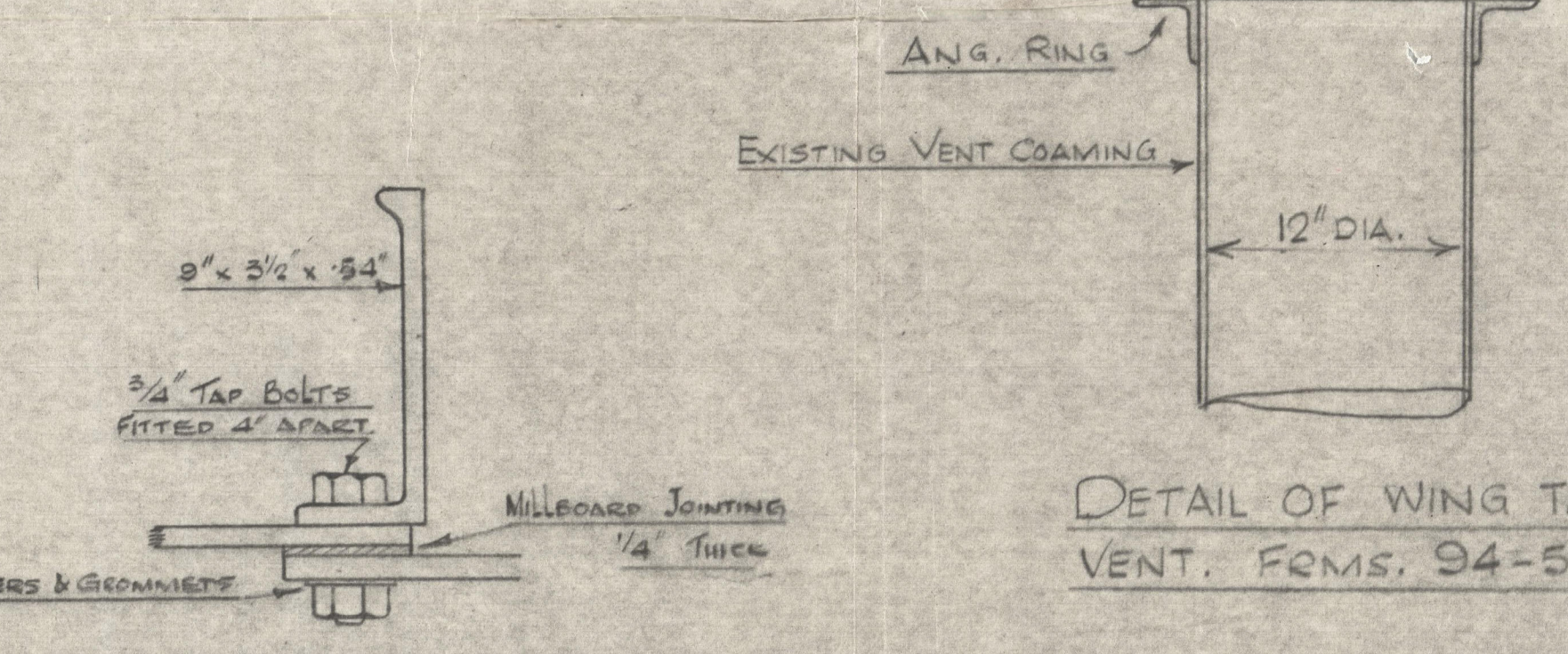
## CONSTRUCTION OF WING TANKS FOR THE CARRIAGE OF LATEX IN No. 3 UPPER TW. DECK.



PORTABLE SPIGOT TO TAKE COW TO BE SUPPLIED & ALSO A BLANK FLANGE WITH LATEX VALVE BOLTED ON



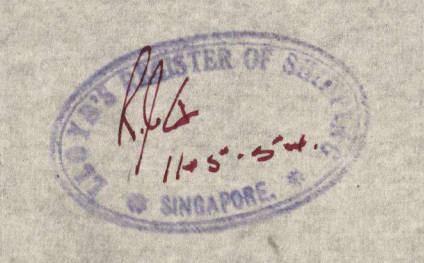
DETAIL OF CIRCULAR MANHOLES 17-0' OF C. FRAMES 96-97 P.L.S. SCALE 1" = 1'-0"



DETAIL SHOWING METHOD OF SECURING PORTABLE PLATE SCALE 1" = 1'-0"

TOP OF AIR PIPE 11'-6" ABOVE CROWN OF TANK

FRAME SPACING 3'-0" TWEEN DECK HEIGHT 10'-0"



ALFRED HOLT & CO. SURVEYORS DEPARTMENT. DATE 19.10.50. NO. 301

Lloyd's Register Foundation

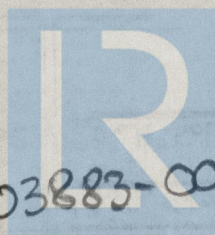
003875-003883-0002



Construction of wing tanks for  
carriage of latex.

"Orestes"

TO ACCOMPANY.....	<i>Aug</i>	REPORT No.....	<i>10254</i>
DATED.....	<i>654.</i>		



© 2020

003875-003883-0002

Lloyd's Register  
Foundation