



P/KB.

AMSTERDAM, 15th May 1933.

TECHNISCHE DIENST

RD VERZOCHT AAN:
ADDRESS ONLY:
T ERBETEN AN:
DE RÉPONDRE À:
'AART MAATSCHAPPIJ, "NEDERLAND"
'TECHNISCHE DIENST
ADE, AMSTERDAM (CENTRUM)

Lloyd's Register of Shipping,

Prins Hendrikkade 86,

AMSTERDAM - C.

NOERAN".

Dear Sirs,

We consider to arrange the afterdeeptank for the transport of liquid fuel in bulk up to the uppertweendeck, with the provision that the tank will be either quite full or empty.

The stiffeners of the endbulkheads under the quarter girders would be replaced by 30" webs and the single riveted seams of the uppertweendeck (top of deeptank) would be reinforced by light welding.

The deeptank should also be fitted for the transport of separate quantities of vegetable oil in the lowertweendeck space and in the lowerhold, so that the lowertweendeck will have to carry a load of 12 ft of oil. The lowertweendeck has already been made oiltight by cutting the frames and stiffeners and fitting these with brackets to the deck.

We have tested the lowertank with a head of water of 22 ft above the lowertweendeck. Neither the deckplating nor the beams and girders showed any noticeable strain.

The hatchcovers of the lowertweendeck are too light and should be replaced by new ones in one piece and with a double row of bolts. As these new covers will be too heavy to be hoisted by the steam deckcranes they will have to be handled and shifted by handtackles.

003867-003874-0234 1/2

N.V. STOOMVAART MAATSCHAPPIJ „NEDERLAND”

TECHNISCHE DIENST

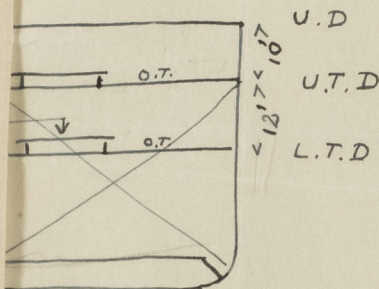
We therefore ask you to keep the weight of these covers as moderate as possible.

We enclose a plan of the covers in threefold.

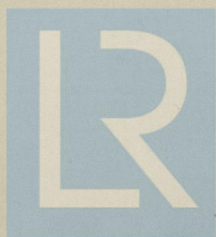
Yours truly,

N.V. STOOMVAART MAATSCHAPPIJ „NEDERLAND”
TECHNISCHE DIENST

H. N. Prins



enclosure.



© 2020

Lloyd's Register
Foundation

0234 ²/₂