

N.V. STOOMVAART-MAATSCHAPPIJ „NEDERLAND.“
VERBOUWING „MADOERA“, „MANOERAN“ EN „MAPIA“.

VERSTERKING VAN DE LANGSSCHOTTEN IN DE DIEPTANKEN.

SCHAAL $\frac{1}{4}'' = 1'-0''$

Proposed strengthening of the longitudinal bulkheads in deep tanks.

DOORSNEDE OVER STUWBLOK NIS.

DOORSNEDE OVER LAADHOOFDEN.

NAAR VOOR GEZIEN.

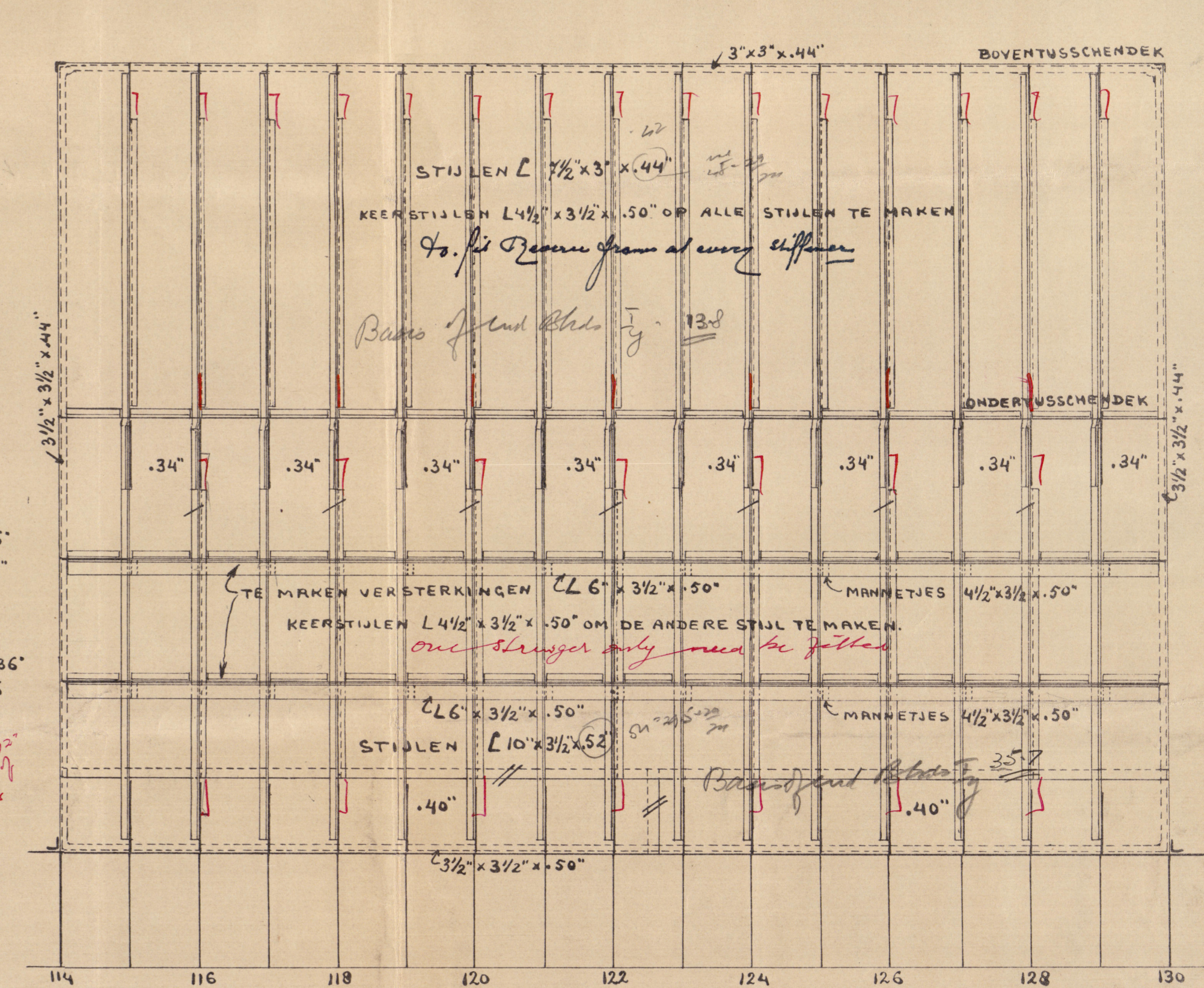
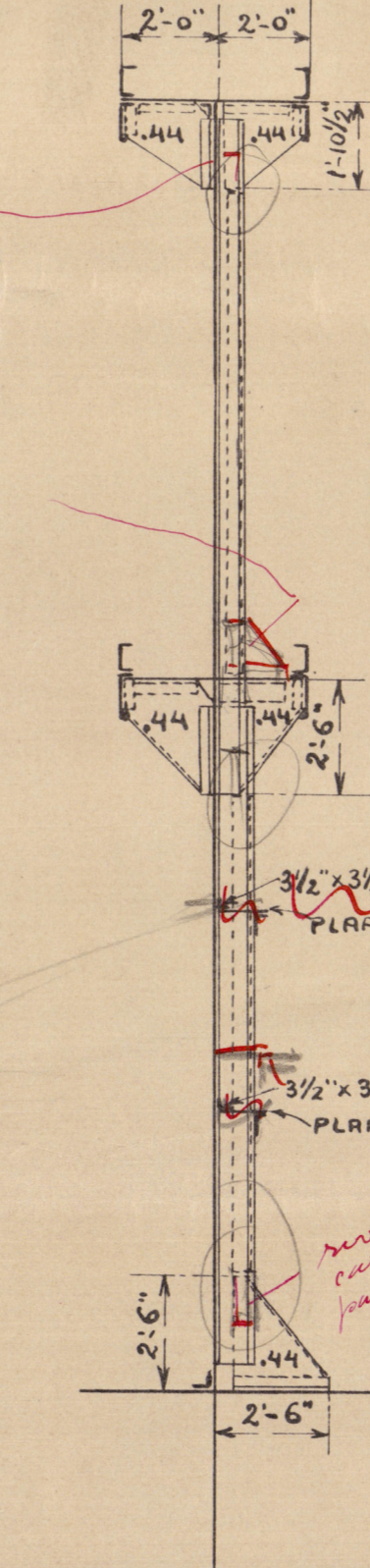
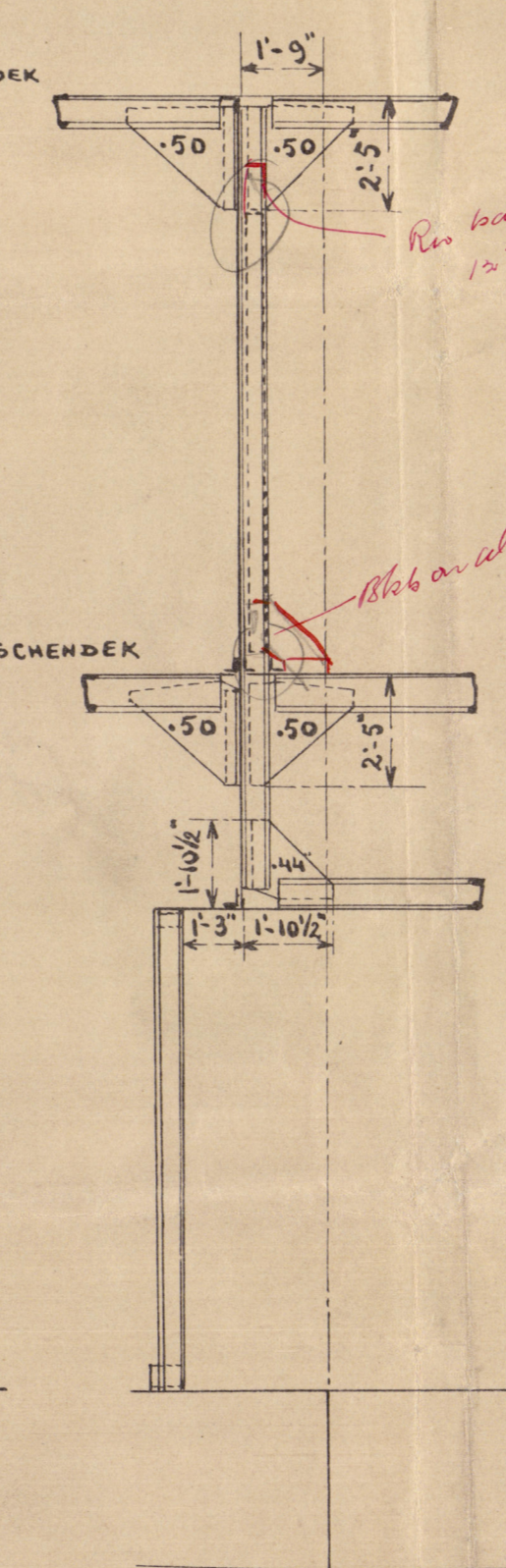
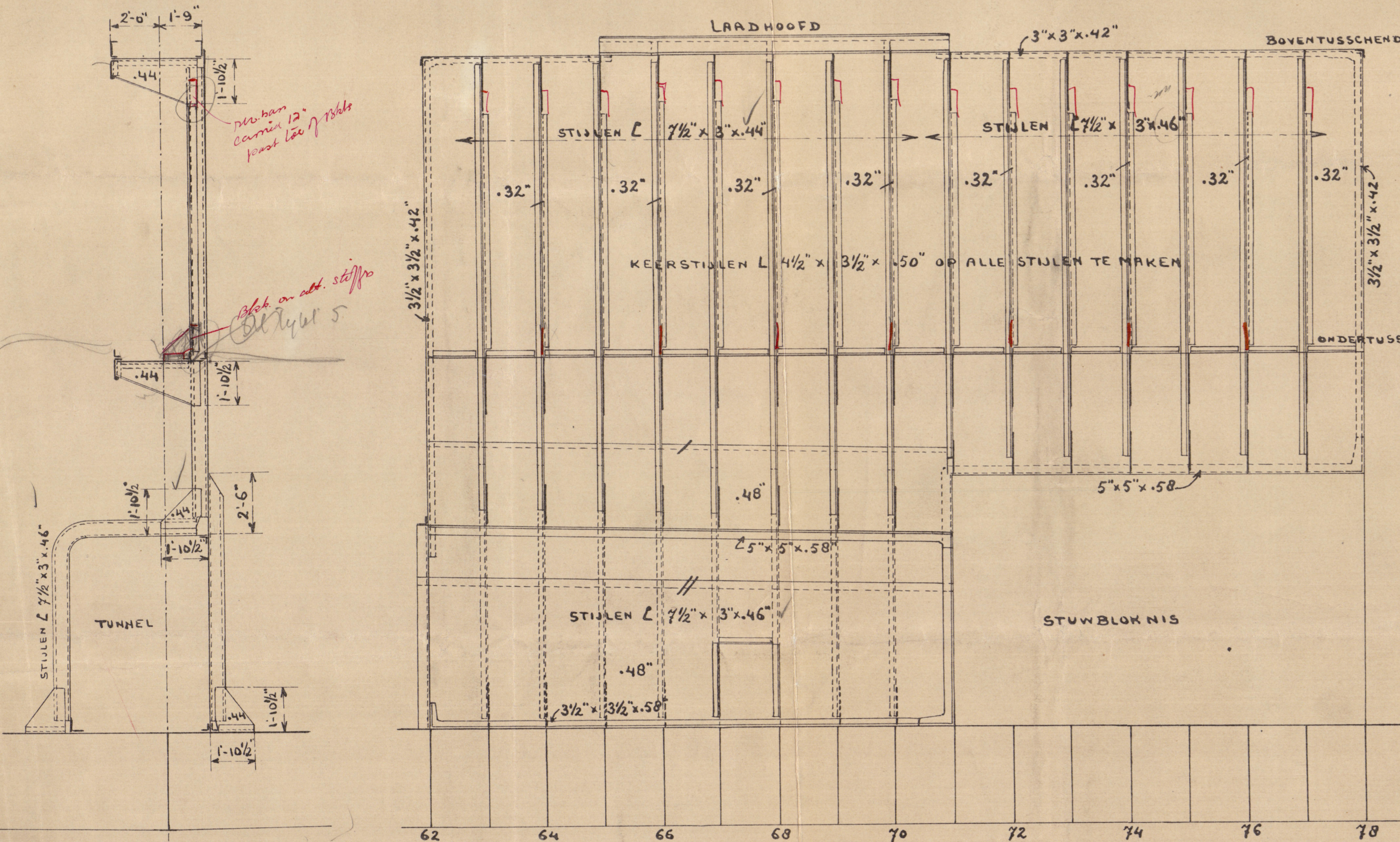
NAAR VOOR GEZIEN.

LANGSSCHOT IN VOORDIEPTANK.

LANGSSCHOT IN ACHTERDIEPTANK.

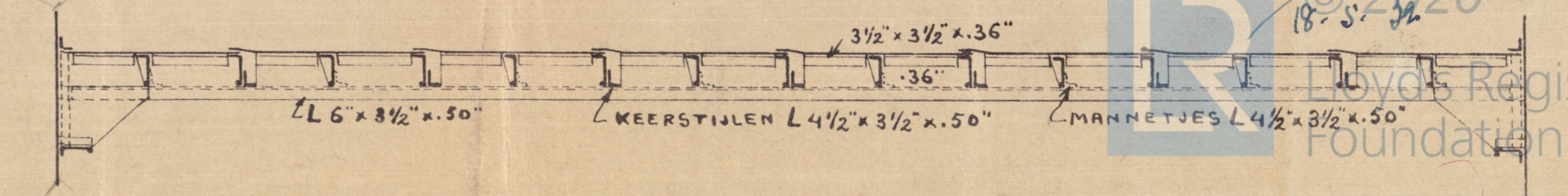
DOORSNEDE OVER TUNNEL.

NAAR ACHTER GEZIEN.



See letter re stiffening of transverse bulkheads & riveting of tank top plates.

Section at proposed strengthening of bulkheads.
DOORSNEDE OVER TE MAKEN VERSTERKINGEN.



005567-005574-0213

S.S. Madoera,
File with → Manoeran
Mapia.

Ans. rept. No. 13038,

003867-003874-0213



© 2020

Lloyd's Register
Foundation