

Priority

S. S. SOPHOCLES.

GIRDERS AND TIES IN DEEP TANKS.

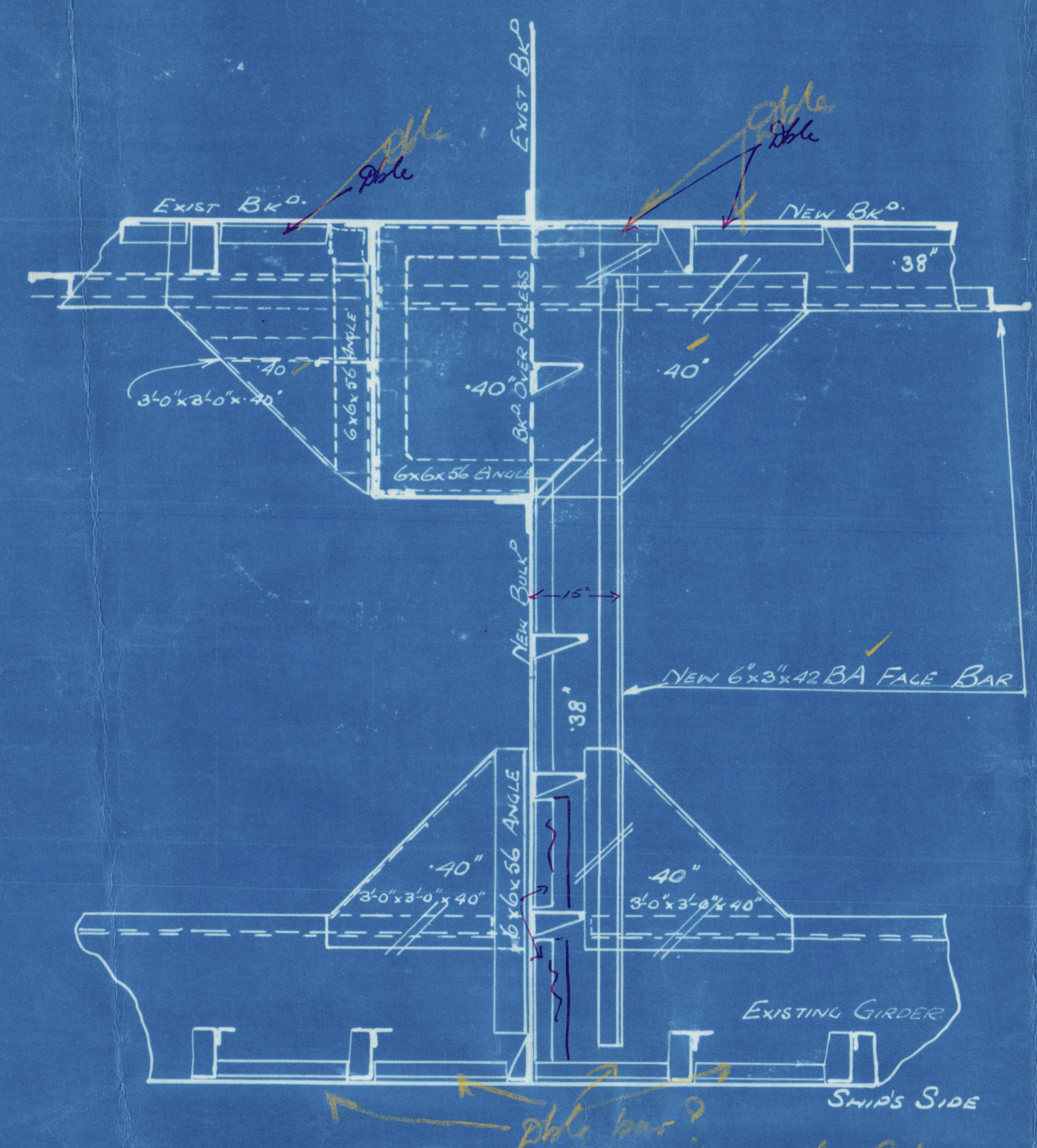
SCALES: 1/8", 1/4" & 1/2" = 1 FOOT

GIRDER BRACKET NOTE

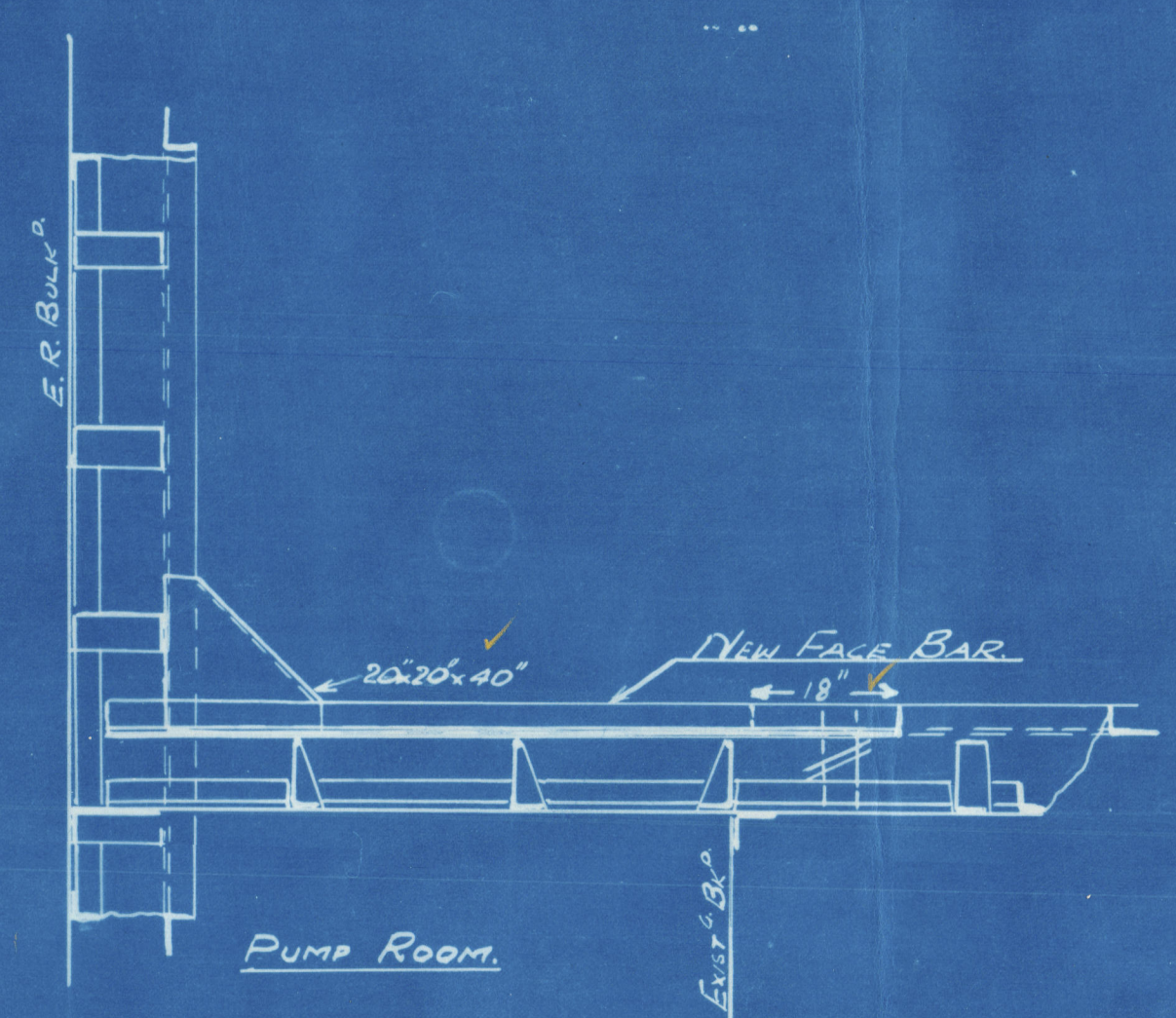
ALL NEW BRACKETS TO BE FLANGED & DOUBLE RIVETED TO GIRDERS. ATTACHMENTS TO BULKHEADS OF THESE BRACKETS TO BE DOUBLE RIVETED. WHERE EXISTING BRACKETS ARE NOT FLANGED FACE BARS TO BE FITTED. WORKMANSHIP TO BE EQUAL TO THE REQUIREMENTS OF SHIPB. CARRYING OUT IN BULKHEADS SECTIONS 17 SECTIONS 25 OF THE RULES TO BE COMPLIED WITH WHEN APPLICABLE.

NEW GIRDER SCANTLINGS.

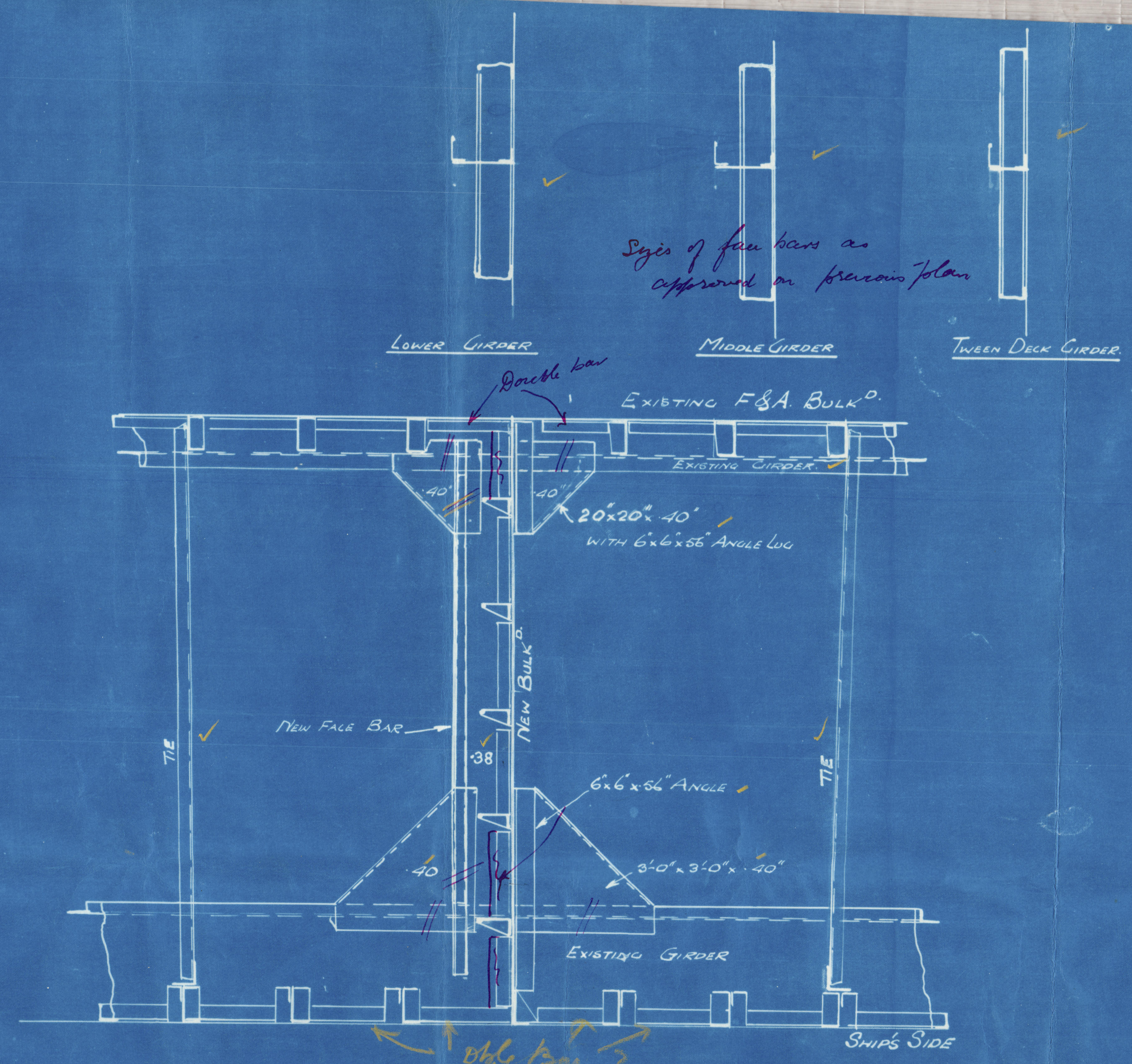
- LOWER GIRDER:- PLATE 18" x 38" FACE BAR 6" x 3" x 42" BA.
- MIDDLE GIRDER:- PLATE 18" x 38" FACE BAR 5" x 3" x 32" BA.
- TWEEN DECK GIRDER:- PLATE 11" x 34" FACE BAR 7" x 3" x 34" BA.



DETAIL OF GIRDER AT BULKHEAD BETWEEN TANKS 1 & 3

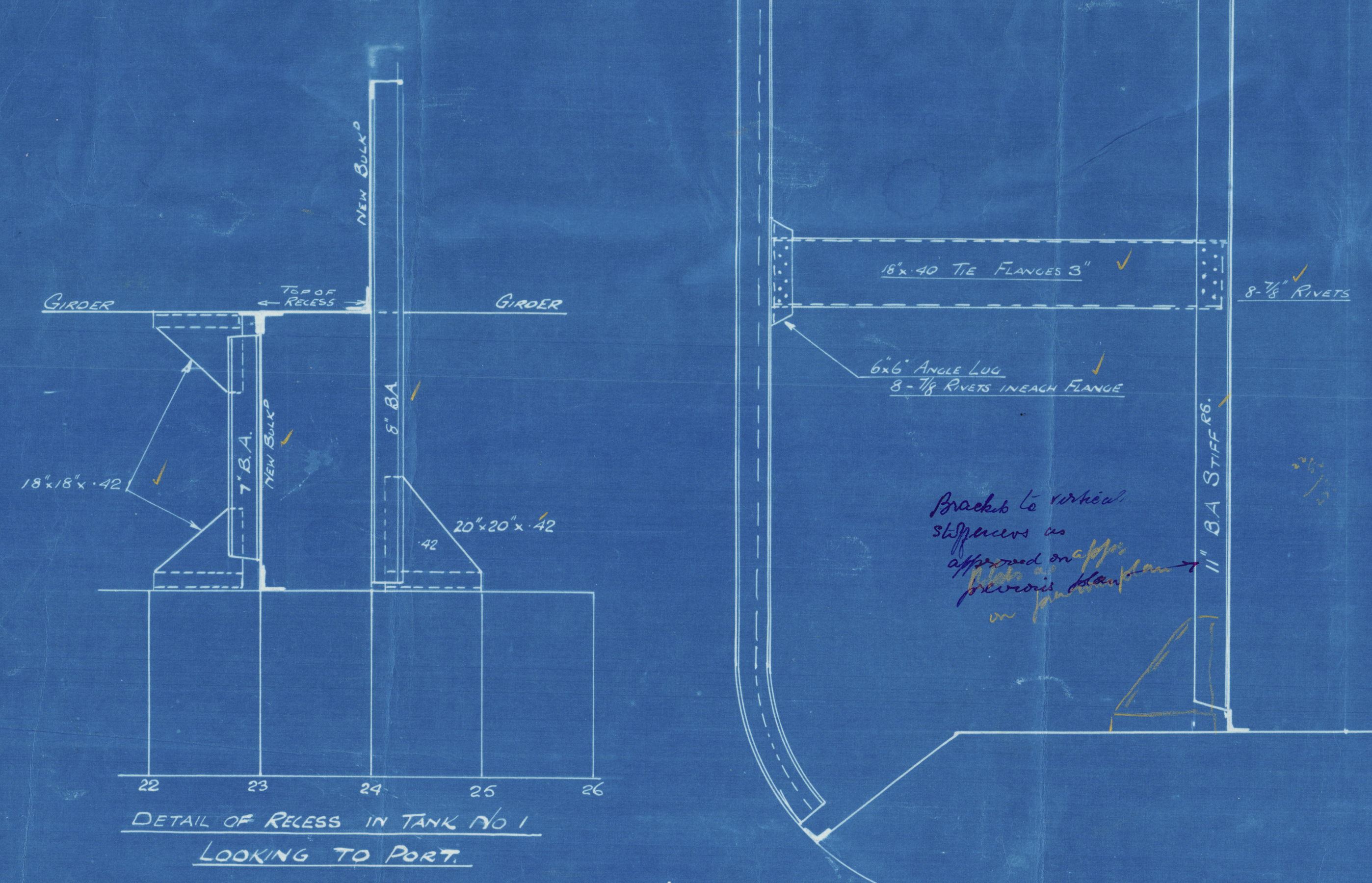


DETAIL OF GIRDER BETWEEN PUMP ROOM & TANK D

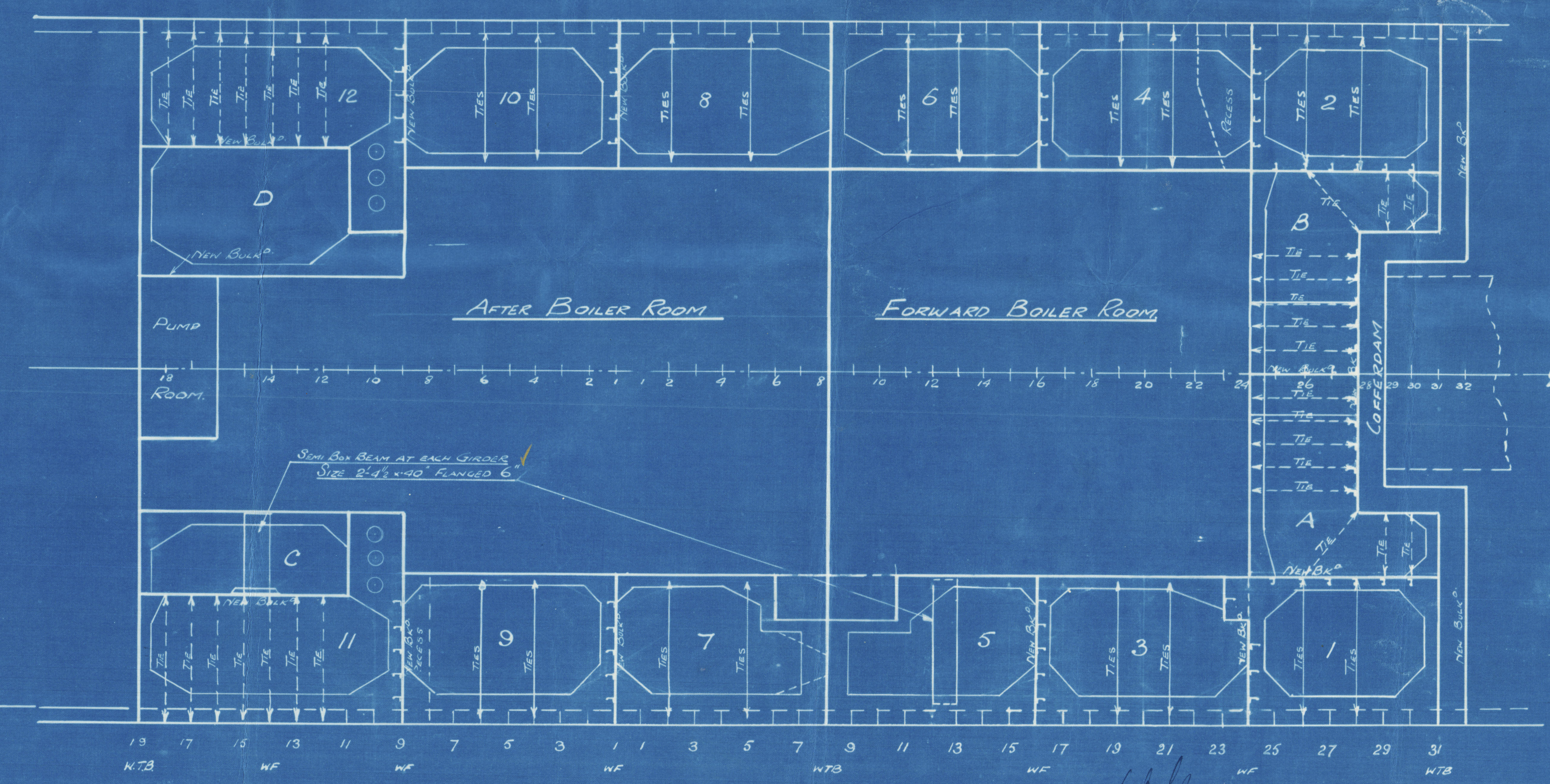


TYPICAL ARRANGEMENT OF GIRDERS ON NEW INWARDS BULKHEADS.

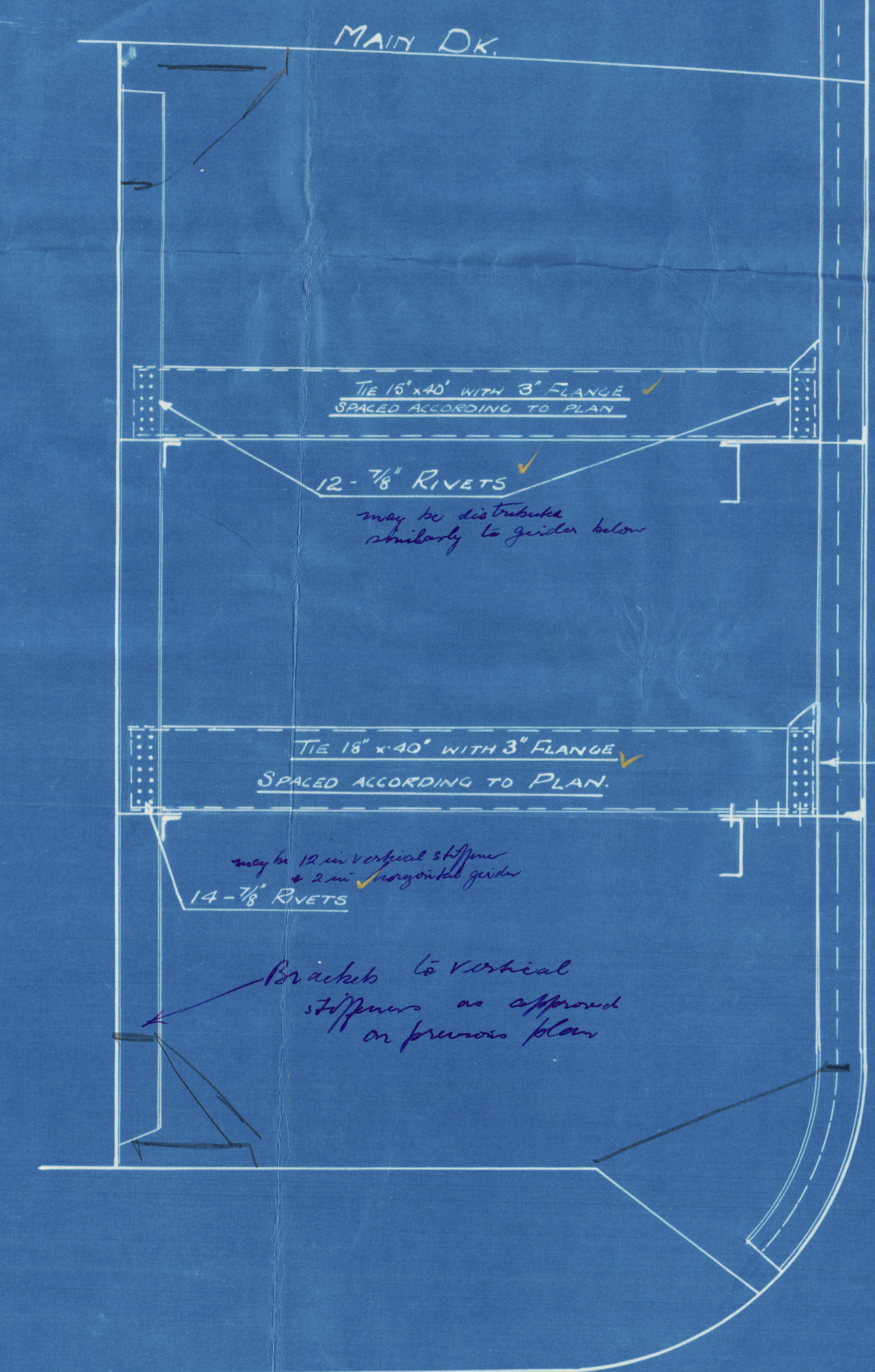
FRAME SPACING - 28"



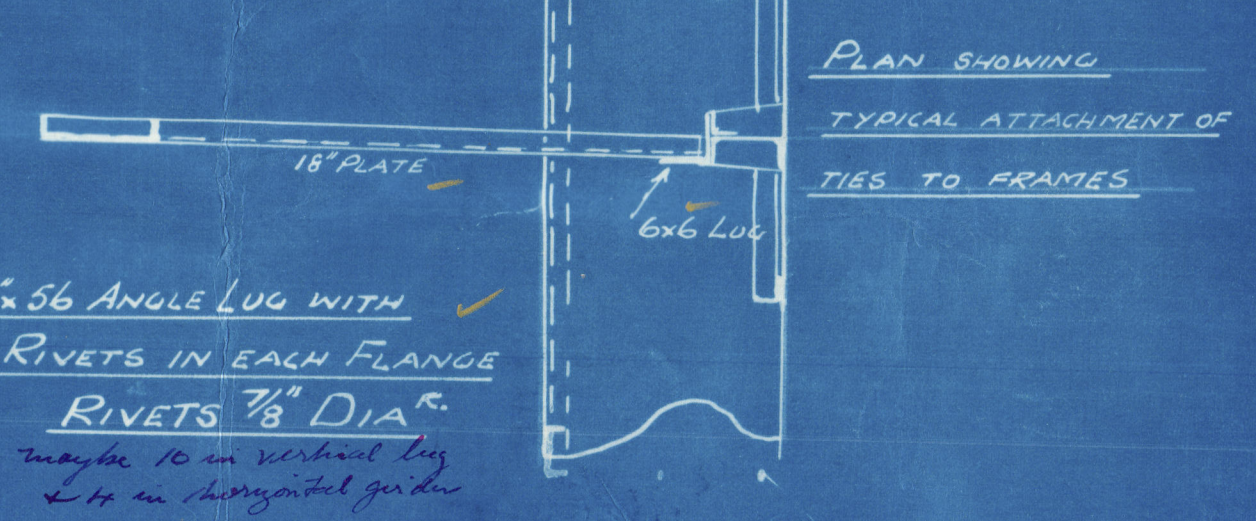
DETAIL OF RECESS IN TANK NO 1 LOOKING TO PORT.



PLAN SHOWING TIES & GIRDERS



SECTION SHOWING GIRDERS AND TIES ON FORE AND AFT BULKHEADS.



PLAN SHOWING TYPICAL ATTACHMENT OF TIES TO FRAMES.

R. & H. GREEN & S. L. W. & CO., LTD.  
GENERAL ENGINEERS & SHIPBUILDERS  
LONDON, E.  
STAFF DRAWING OFFICE  
Drawing Number 9688  
Date 26/6/26



Yamaroa

London Rpt-90519

Also for  
Mataroa

London Rpt-90746

---

003567 -003874-0147



© 2020

Lloyd's Register  
Foundation



Tamara

London Rpt 90519

Also for

Nataroa

London Rpt 90746

003867 - 003874 - 0147



© 2020

Lloyd's Register  
Foundation