

15/1/24.

S. S. No 228. PROFILE & DECK PLANS.

SCALE $\frac{1}{8}'' = 1 \text{ FOOT}$
CLASSED TO LLOYDS 1923-4 RULES, COMPLETE SUPERSTRUCTURE VESSEL.

PRINCIPAL DIMENSIONS.

LENGTH B.P.	230'-0"
BREADTH M.O.	34'-10"
DEPTH M.O.	17'-0"
TWEEN DECK	7'-0"

The draught not to exceed that for a Complete Superstructure vessel having a tonnage opening.

PANTING ARRANGEMENT.

INTERCOSTAL PLATE 30"
VERT. JOINTS 24" x 31" SINGLE
BOTTOM 3" x 3" x 31" SINGLE

DEPTH GIRDER 3' 6"
OFF CENTER.

MIN. GIRD. FULL DEPTH

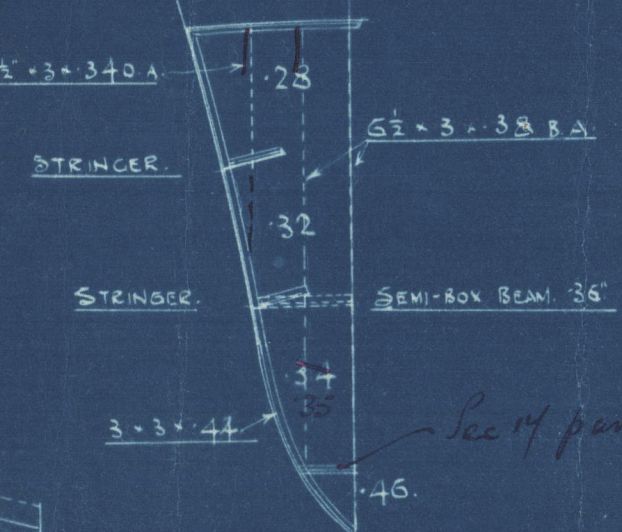
TANK SIDE AT SHELL TOP OF TANK

DEPTH GIRDER

3/8" LENGTH

PLAN AT TOP OF FLOORS.

BEAMS MARKED THUS X INCREASED
2" DEEPER UNDER WINCHES & RECS.
3" UNDER WINCHES (WINCHES EXTRA)

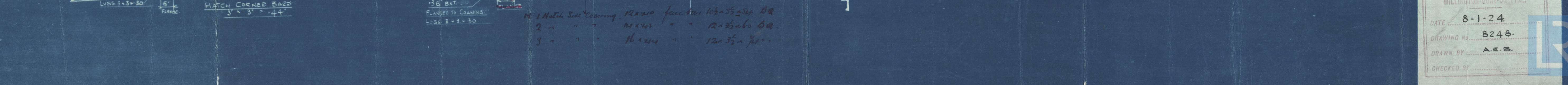
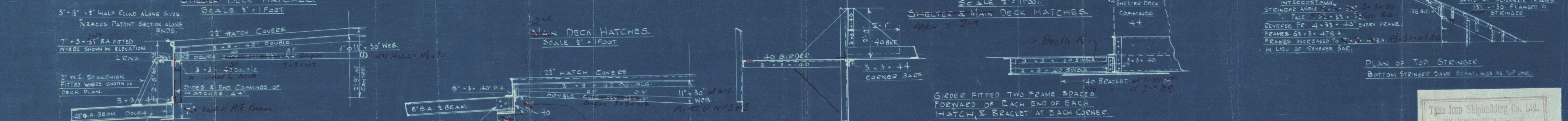
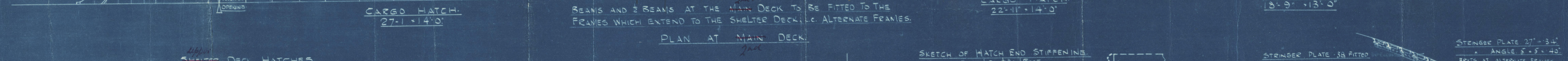
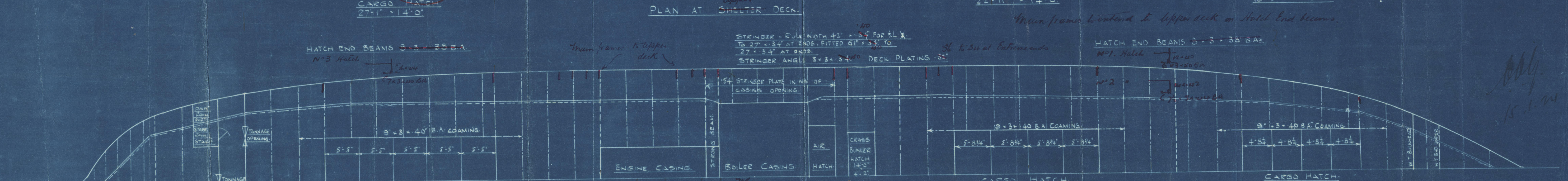
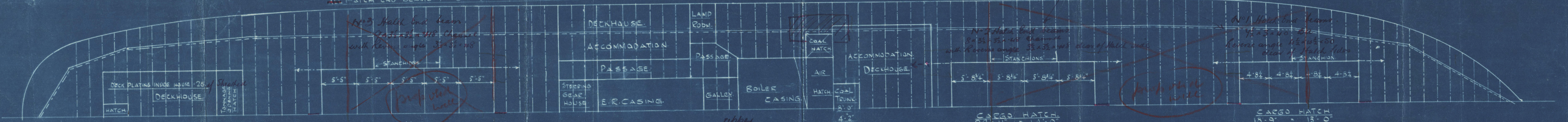
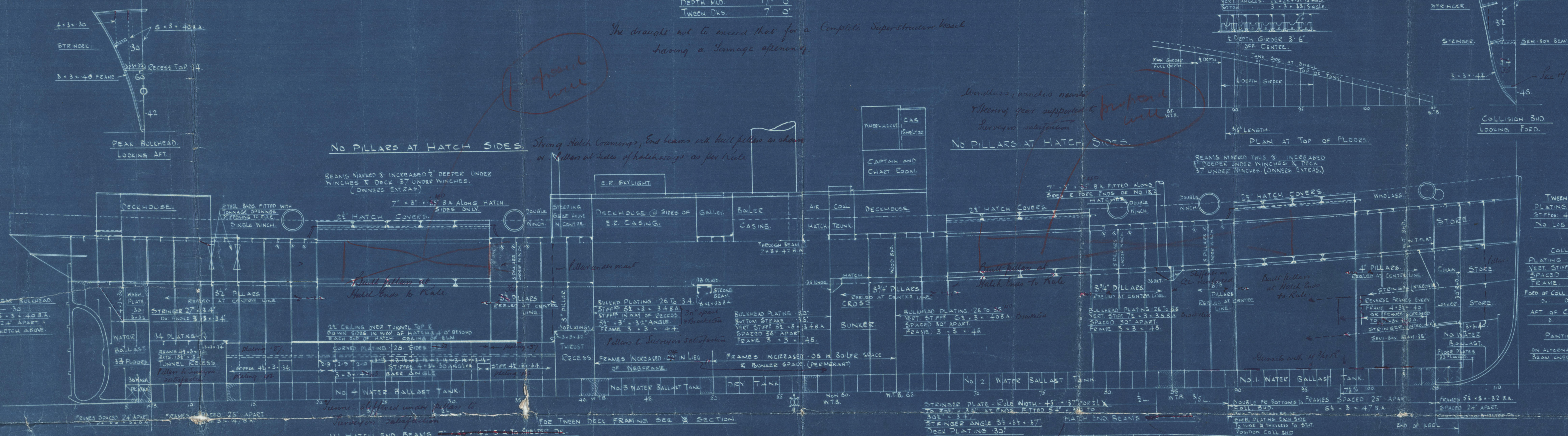


COLLISION BHD.
LOOKING FORWARD

TWEEN DECK BULKHEAD.
PLATING 26"
STIFFS 4 1/2" x 3" x 30 BA
SPACED 24" APART.
NO LOG ATTACHMENT.

COLLISION BULKHEAD (SEE SKETCH ABOVE)
PLATING 26 TO 46
VERT. STIFFS 6 1/2" x 3" x 30 BA
SPACED 24" APART.
FRAME 8" x 3" x 44
FORD. OF COLL. BHD - STIFFS - 27" x 3"
D. D. D. ANGLE 5" x 3" x 10
APT. OF COLL. BHD - STIFFS - 30" (SEE BELOW)
D. D. D. ANGLE 5" x 3" x 10

PANTING BEAMS
ON ALTERNATE FRS. 6 1/2" x 3" x 13 BA
BEAM KNEES 13 1/2" x 35"



Time Iron Shipbuilding Co. Ltd.
WILMINGTON-QUAY-ON-TYNE.
DATE 8-1-24.
DRAWING NO. 8248.
DRAWN BY A.E.B.
CHECKED BY

Messrs Tyne Iron S-B-Co

No 228

Profile and deck plans.

→ Medway basin

S.S. "Sentry"
NEWCASTLE ON TYNE.
Report No. 78206

RETAIN

003846-003857-0207



© 2020

Lloyd's Register
Foundation