

SHIP NO 397-8-9-400

MIDSHIP SECTION

SCALE - 3/4" = 1 FOOT

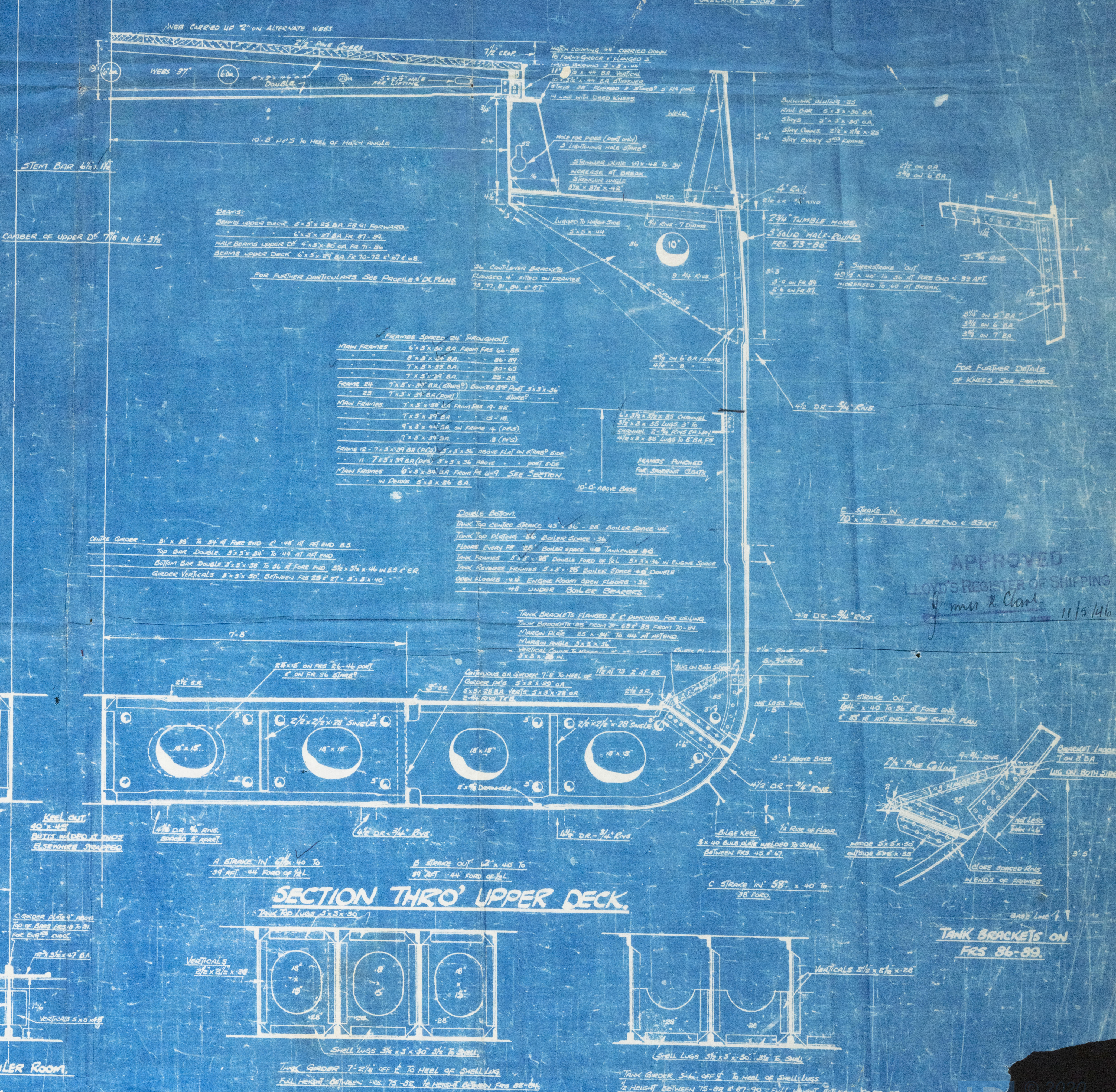
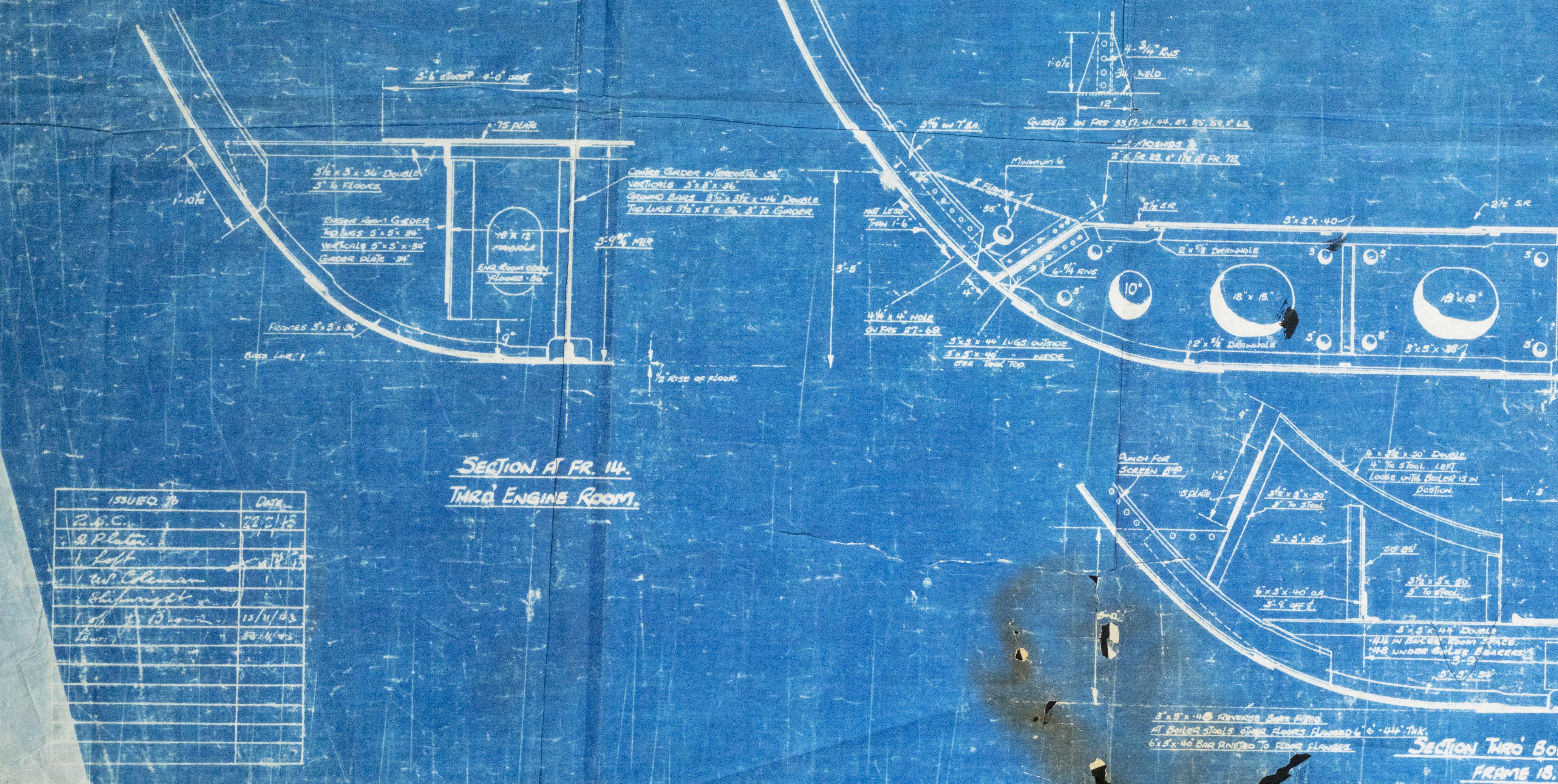
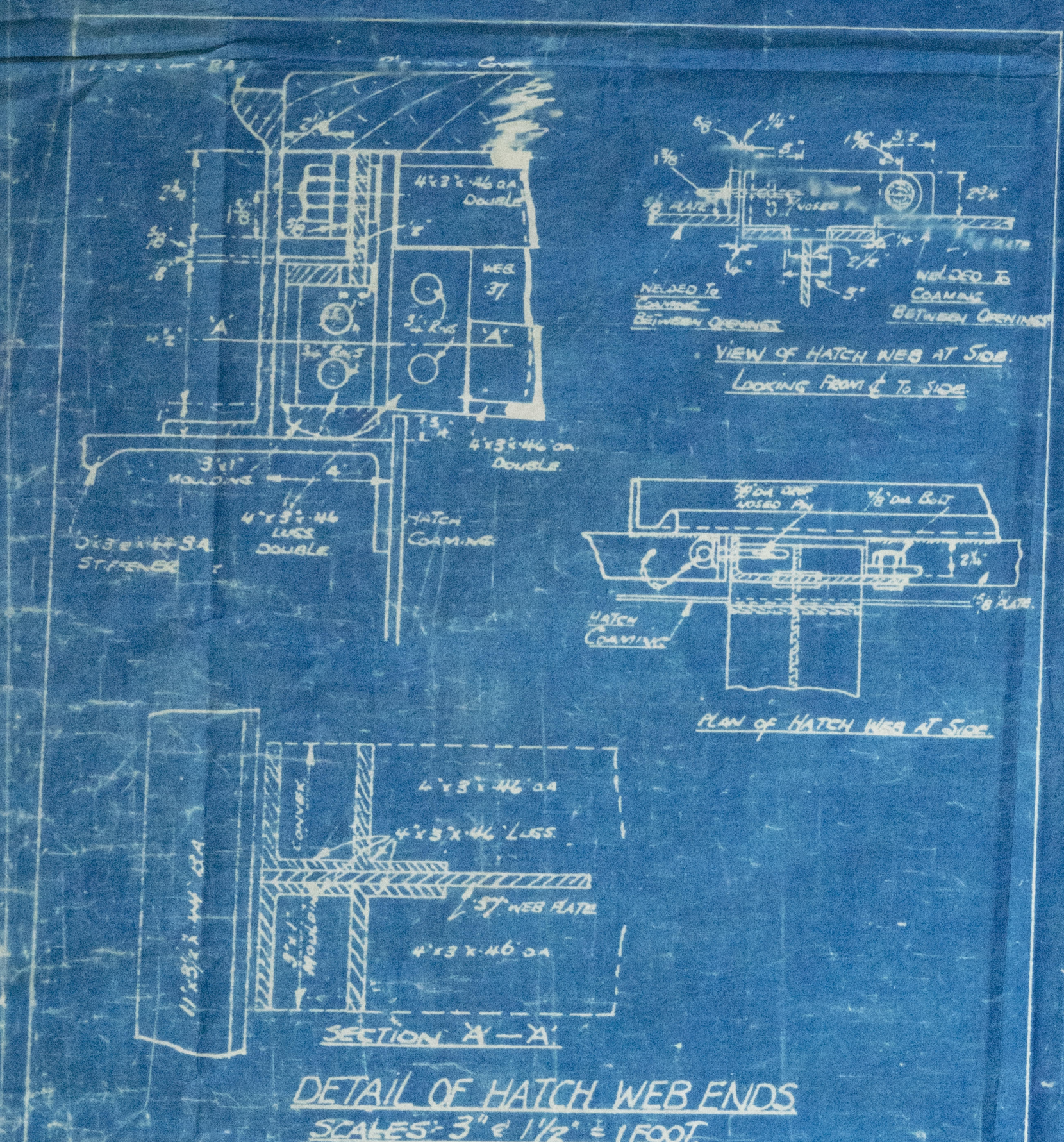
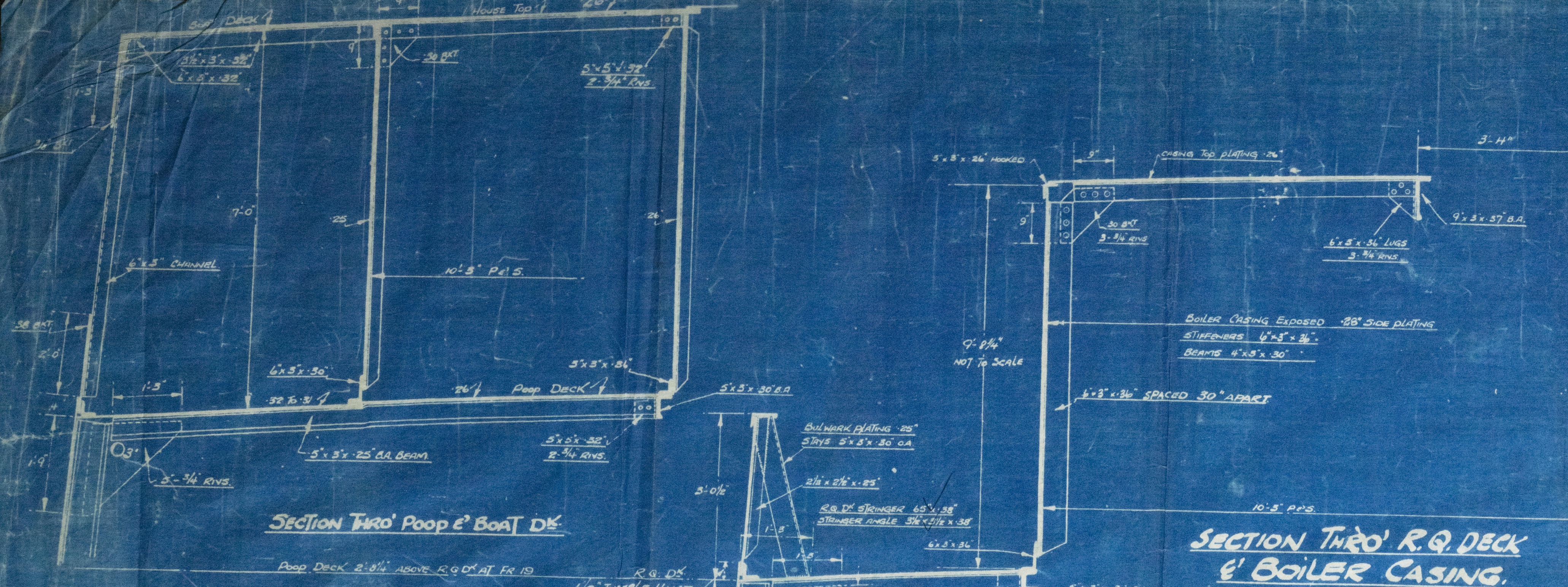
DIMENSIONS - 202'-0" x 32'-7" x 15'-11 1/2" TO UPPER DECK 2' 11" TO R.Q. DECK.

EQUIPMENT C23

TWO BOWER ANCHORS EACH 23 TONS (STOCKLESS)	30 2 1/4 (all 60°)
ONE STREAM ANCHOR 7 1/2 "	10 5
ONE KEDGE 3 1/2 "	
180 FATHOMS 1 1/4" SWD CHAIN CABLE	210 @ 1 1/16
75 " 3/8" S.W.R. STREAM WIRE	60 @ 3/4
90 " 9" HEAVY TOWLINE	90 @ 9
1 @ 90 " 7" HAWSEYERS	10 @ 6
1 @ 90 " 5 1/2" WARRDS	10 @ 5

Yew Teat - the Empire Insurance

KEEL BUTTSTRIPS	END CONNECTIONS	PLATE BUTTSTRIPS	PLATE CONNECTIONS
CENTRE GUNNER BUTTS	11-12 1/2"	11-12 1/2"	11-12 1/2"
DOUBLE BOTTOM CENTRE GUNNER BUTTS	11-12 1/2"	11-12 1/2"	11-12 1/2"
BUTTS IN GUNNER BUTTS	11-12 1/2"	11-12 1/2"	11-12 1/2"
UPPER DECK PLATE BUTTS	11-12 1/2"	11-12 1/2"	11-12 1/2"
PLATE BUTTS RESERVE	11-12 1/2"	11-12 1/2"	11-12 1/2"
SHOCK STRAKE & TERN STRAKE	11-12 1/2"	11-12 1/2"	11-12 1/2"
SHOCK BUTTS	11-12 1/2"	11-12 1/2"	11-12 1/2"
SUPERSTRAKE & SHOCK BUTTS AT ENDS	11-12 1/2"	11-12 1/2"	11-12 1/2"
BULKHEAD BUTTS	11-12 1/2"	11-12 1/2"	11-12 1/2"
CABINETS WHERE EXPOSED	11-12 1/2"	11-12 1/2"	11-12 1/2"
NOT EXPOSED	11-12 1/2"	11-12 1/2"	11-12 1/2"



REMARKS

NO.	DATE	REMARKS
1	12/1/12	As per plan
2	12/1/12	As per plan
3	12/1/12	As per plan
4	12/1/12	As per plan
5	12/1/12	As per plan
6	12/1/12	As per plan
7	12/1/12	As per plan
8	12/1/12	As per plan
9	12/1/12	As per plan
10	12/1/12	As per plan

APPROVED
LLOYD'S REGISTER OF SHIPPING
James R. Clark
11/5/14

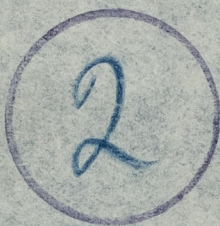


/ PERELLE

"YEWFOREST"



Midship Section



© 2020

Lloyd's Register
Foundation

003846-003857-0017