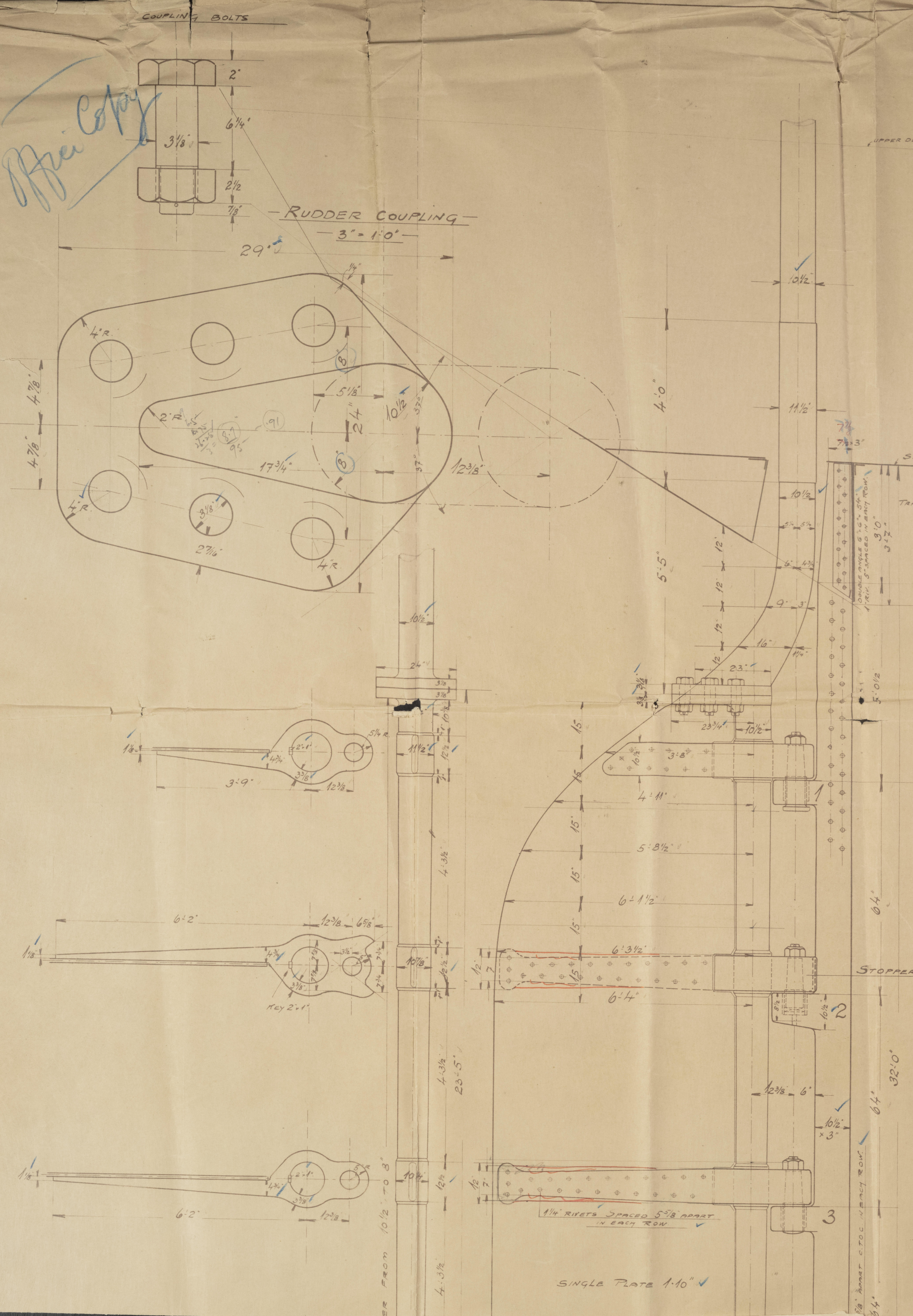


Office Copy

SHIP No 26 STERN POST AND RUDDER.

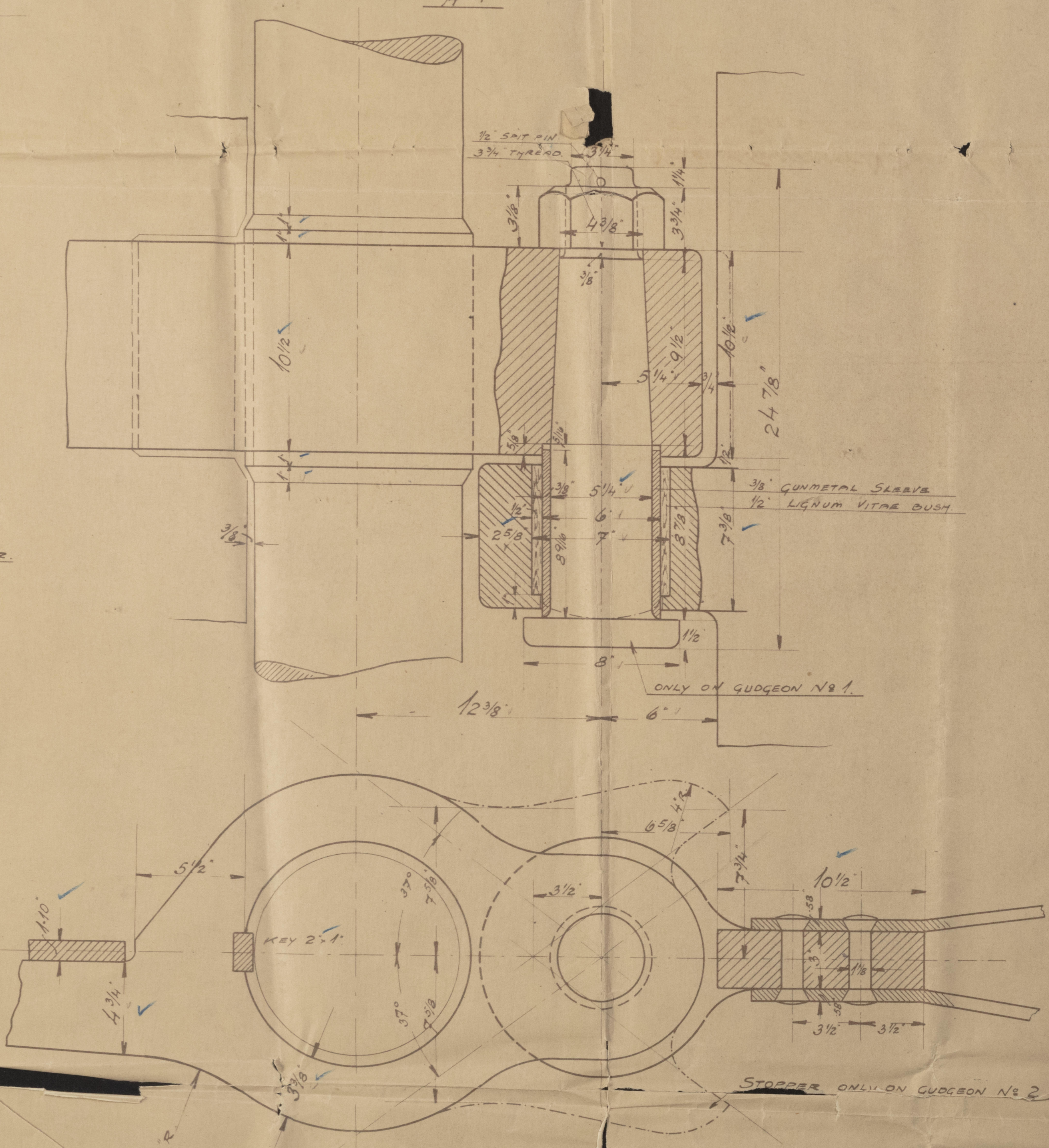
SCALE 3/4" & 3" = 1'-0"

MATERIAL:
STERNPOST OF CAST STEEL.
RUDDER AND MAINPIECE OF FORGED STEEL.
ARMS OF FORGED STEEL SHUNK ON KEYS TO MAINPIECE.
PINTLES OF STEEL WITH METAL BUSHES.
SPEED OF VESSEL 11 KNOTS.
A x D = 142 x 3.8 = 540.
LLOYDS CERTIFICATE TO BE DELIVERED.

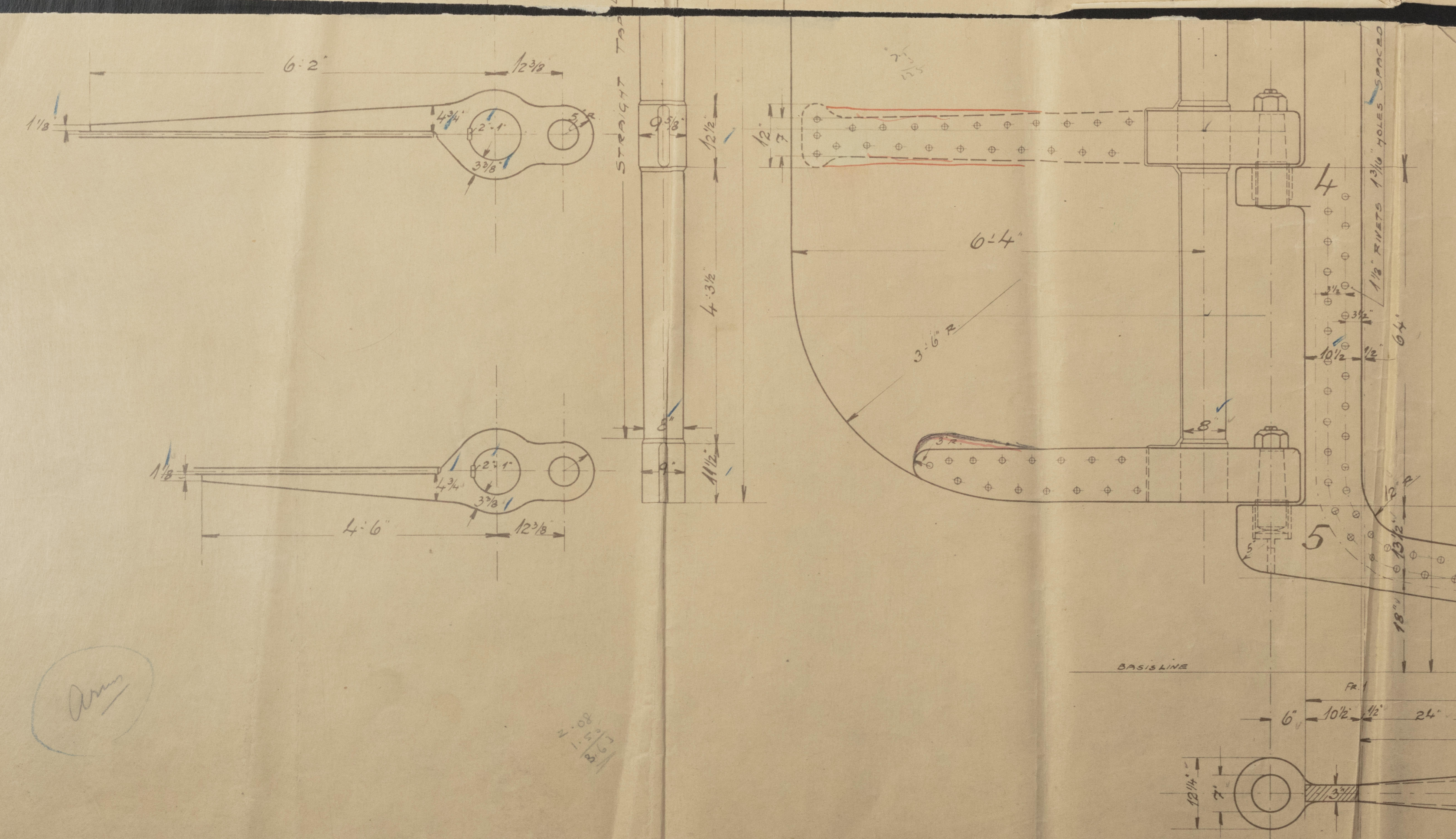
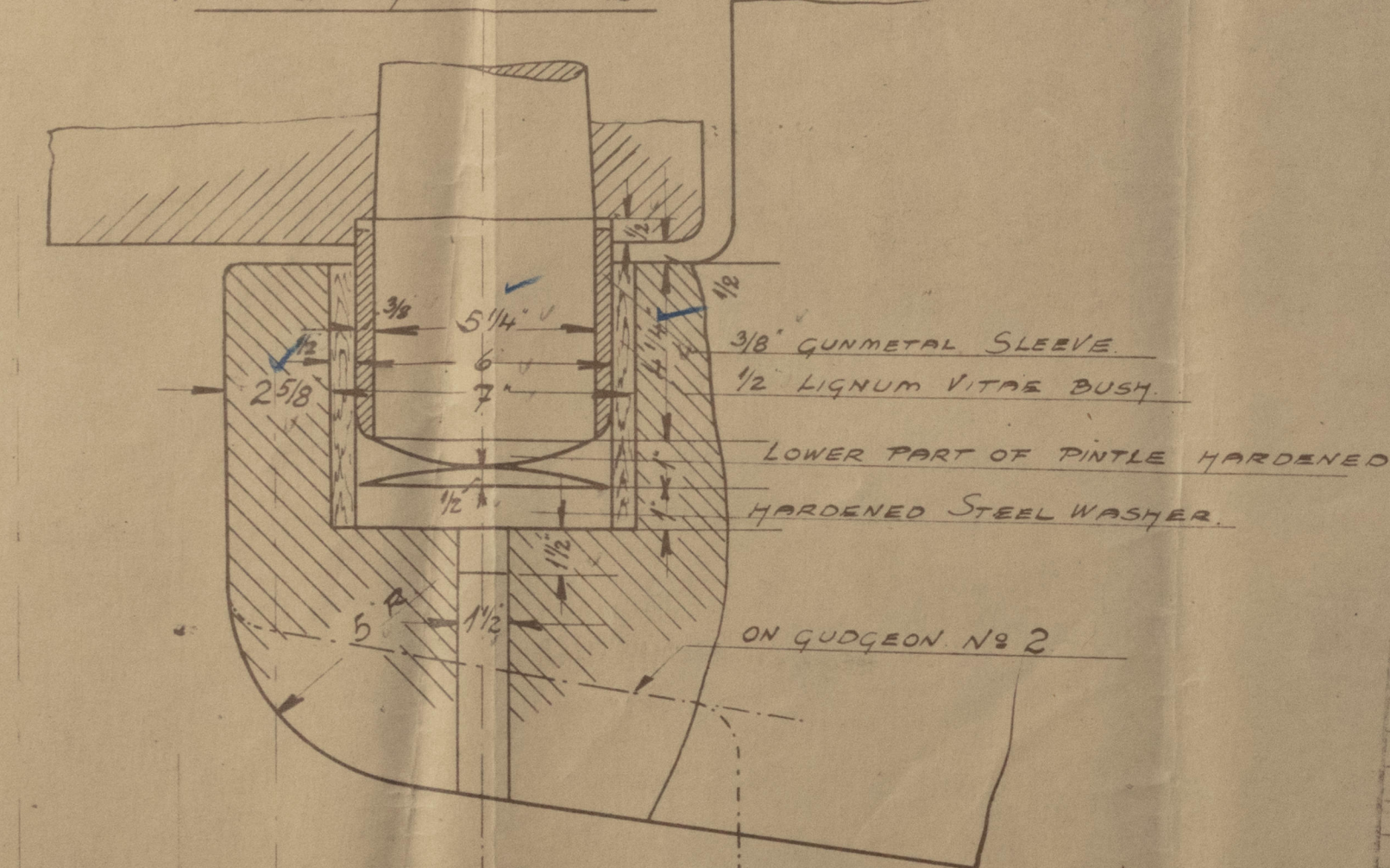


TRANSOM PL. 45" x 52"
Rule 45" x 52"

GUDGEON No 1, 3 & 4



FOOT GUDGEON AND GUDGEON No 2

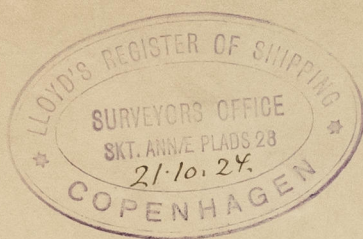


LYSTRYK	TIL
1/2" x 3"	Lloyd's Regd.

NAKSKOV SHIPSVEFT
SHIP No 20
STERN POST & RUDDER

SKALA 3/4" & 3" = 1'-0"
TEKNIK 1/2" x 3"
GRUPPE 1/2" x 3"

STERN POST & RUDDER.



~~Gen Box 346~~

* M.V. Astoria *

N/N. Panaghis



© 2020

003824-003831-0075

Lloyd's Register
Foundation