

SHIP No 26

## MIDSHIP SECTION

CLASS: LLOYD'S REGISTER 100 AI WITH A FREEBOARD  
CORRESPONDING TO A DRAUGHT NOT EXCEEDING THAT CONTEM-  
PLATED BY THE RULES FOR A COMPLETE SUPERSTRUCTURE VESSEL.

MATERIAL: STEEL WITH STEEL RIVETS.

SCALE  $\frac{1}{2}'' = 1'-0''$ 

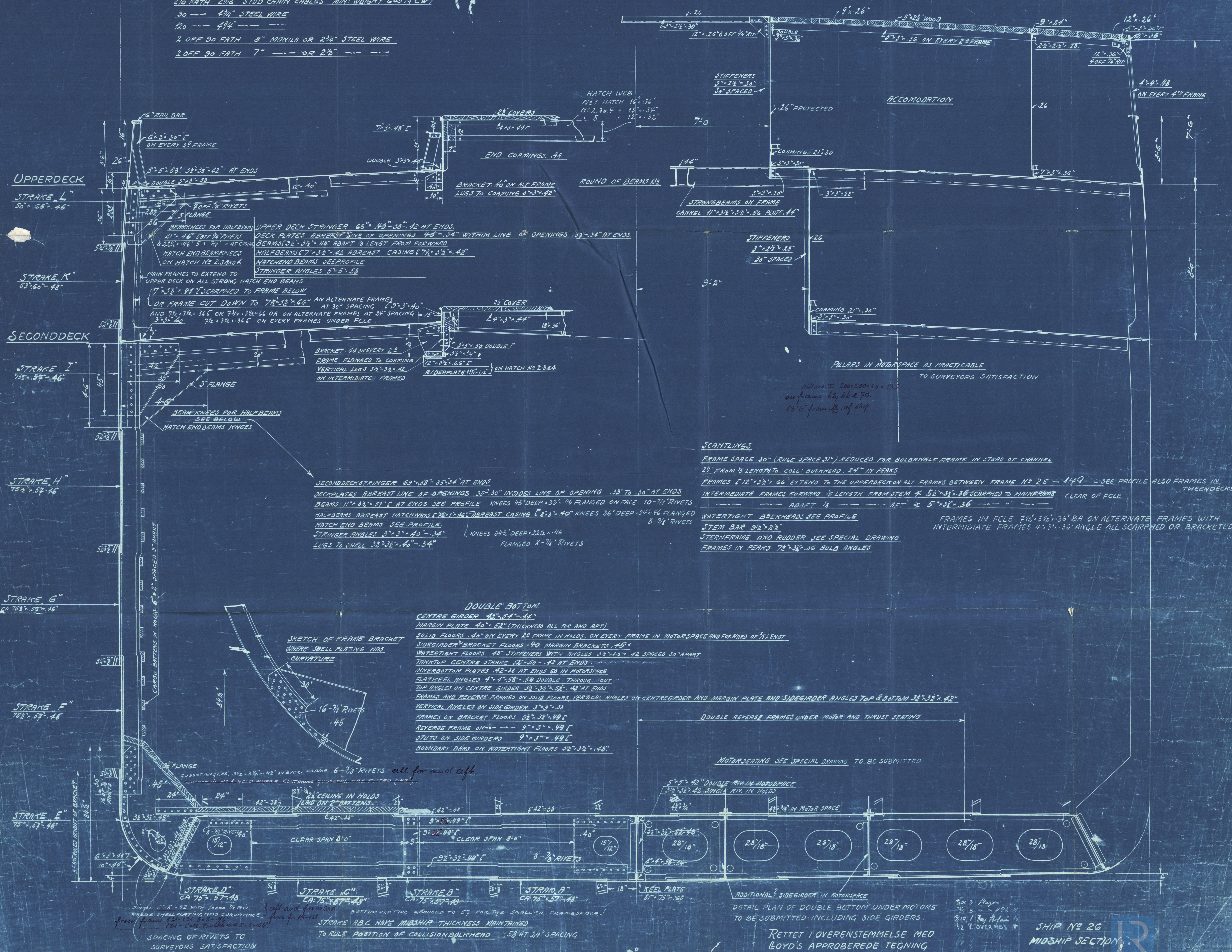
## EQUIPMENT NUMBER

2<sup>ND</sup> LONGT NUMBER 33916  
FORECASTLE DECK 180  
DECKHOUSE AND CASING 417  
34512

LENGTH BETWEEN RAAS PER RULES 380'-0"  
BREADTH MOULDED 53'-3"  
DEPTH TO SECONDDECK 28'-0"  
" TO UPPERDECK 36'-0"  
DRAUGHT LOADED 25'-0"

$L \times D = 380 \times 56 = 13680$  FIRST LONGITUDINAL NO  
 $L \times (B+D) = 380 \times (53.25 + 36) = 23915$  SECOND ---  
 $\frac{B}{L} = \frac{56}{380} = 10.55$   
 $\alpha = \frac{28.0}{3.42}$   
24.58

2 OFF STOCKLESS ANCHORS EACH 60 CWT  
1 --- --- --- 50% ---  
1 --- STREAM --- 16 1/2 CWT + 25% STOCK  
20 FATH 2 3/4" STUD CHAIN CABLES MIN. WEIGHT 645 1/2 CWT  
30 --- 4 3/4" STEEL WIRE  
20 --- 4 3/4" ---  
2 OFF 90 FATH 8" MANILA OR 2 3/4" STEEL WIRE  
2 OFF 90 FATH 7" --- OR 2 1/2" ---





Midships section (as fitted)

m/s "Astoria"

Nakskov's N<sup>o</sup> 26

m/s. "Astoria" of Copenhagen  
Cpm. Rpt. No. 7249.



© 2020

Lloyd's Register  
Foundation

003824-003831-0074