

Date: 12/6/17
FOR ENCLOSURE TO
Lloyd's
From
PALMERS S. & I. CO., Ltd.,
Shipyard Department,
JARROW-ON-TYNE.
(S.Y.M.O. NO. 11.) 2/2

N^o 878

FORGED IRON STERN FRAME

SCALE $\frac{1}{2}$ " = 1 FOOT

AREA OF RUDDER = 147.25 sq ft

CENTRE OF GRAVITY = 3.33 FT FROM CE OF PINTLES

SPEED = 11 KNOTS

A.D. = 400.5

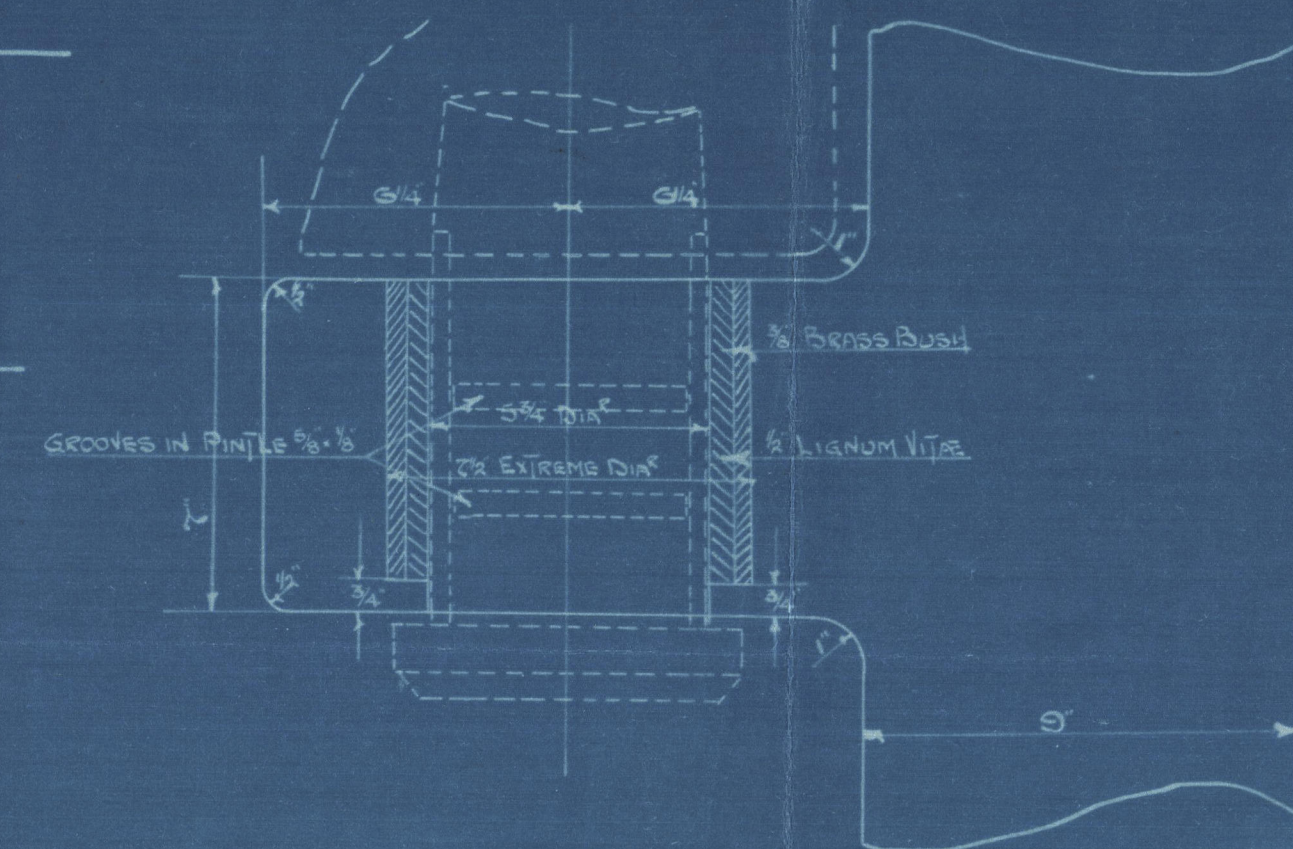
DIAMETER OF RUDDER HEAD = 10'

DIAMETER OF PINTLES = 5'

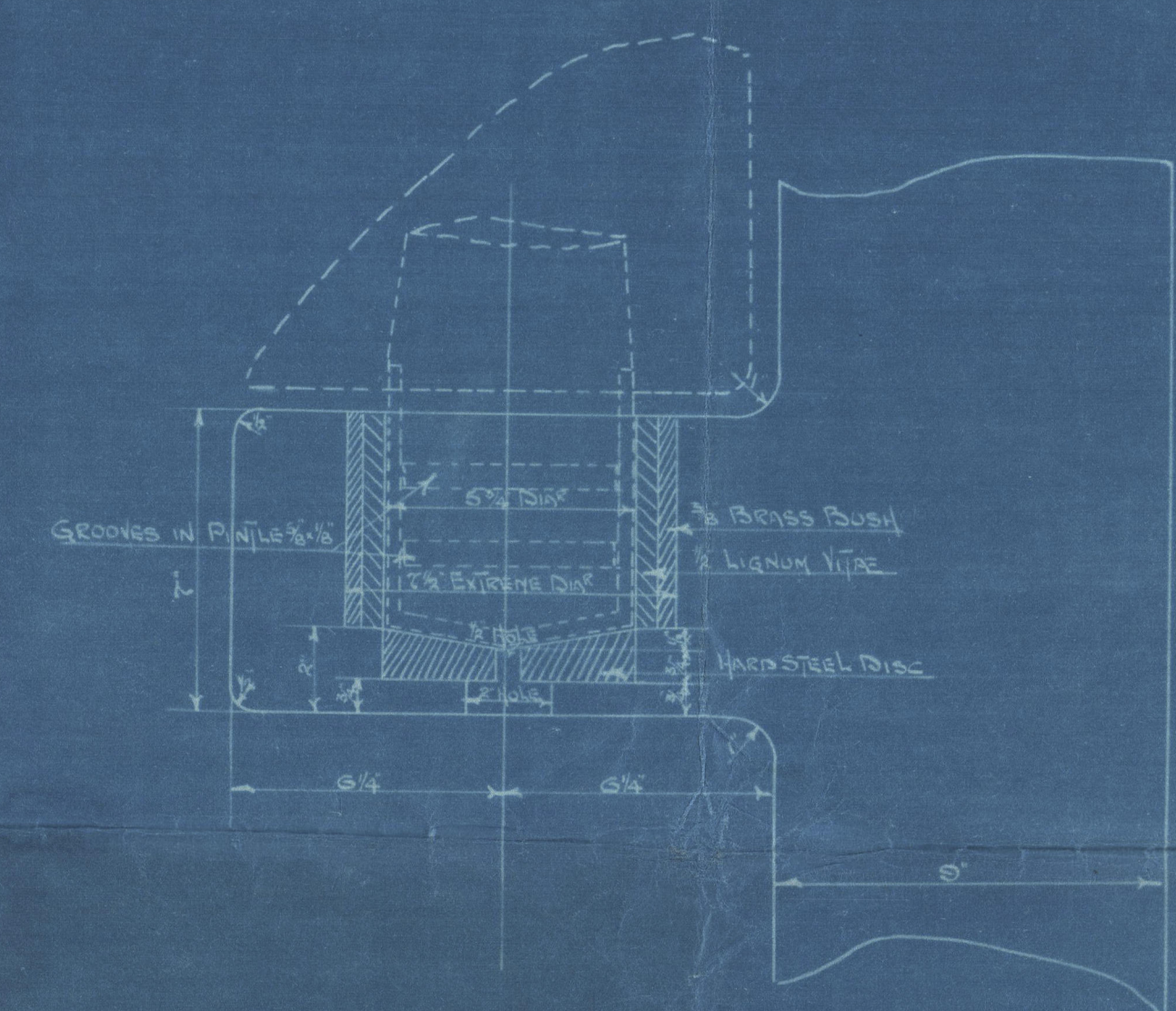
—TO PASS LLOYD'S SURVEY—

LLOYD'S LONGITUDINAL N^o 36536-0

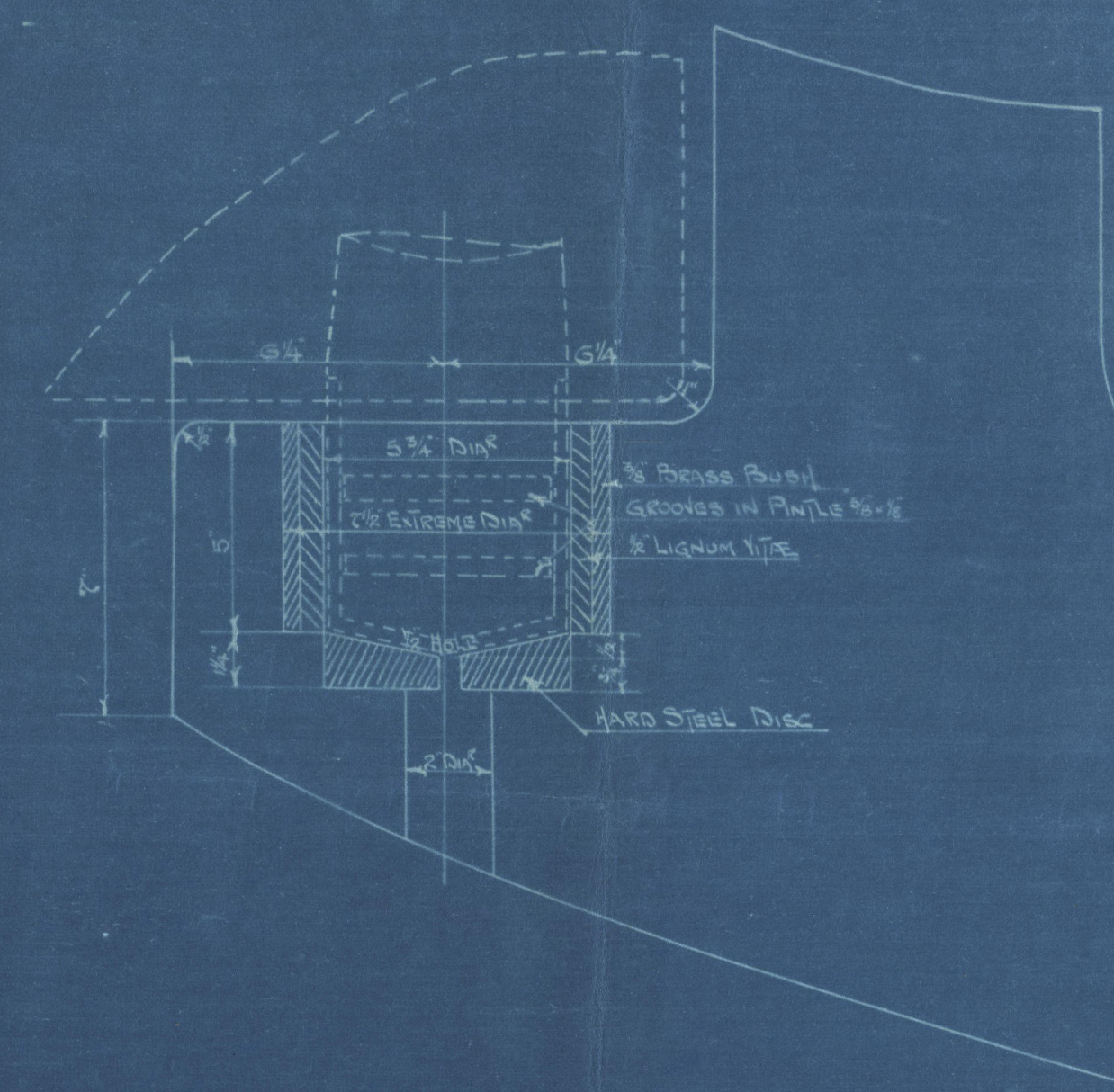
TOP GUDGEON MARKED A
SCALE 3" = 1 FOOT



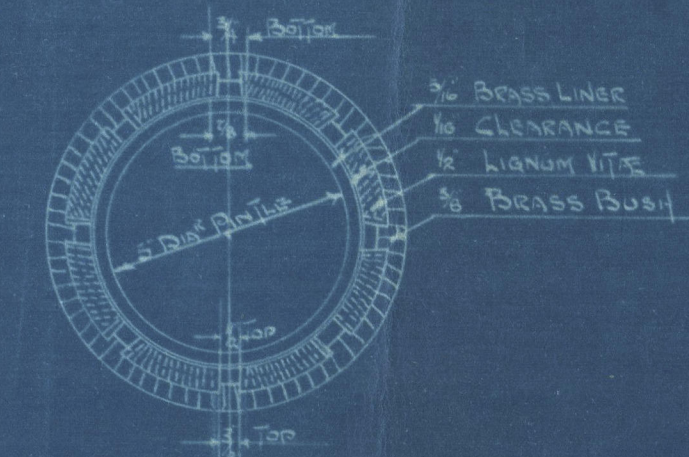
GUDGEONS B, C, D, E



BOTTOM GUDGEON F



DETAIL OF BUSHING IN GUDGEONS
SCALE 3" = 1 FOOT



60/2
23.2.17



Lloyd's Register
Foundation

23.2.17

17 FEB 1917

N° 8

OF BRASS LINES
TO CLEARANCE
OF LIGNUM VITE
OF BRASS BUSH

TOP GUDGEON MARKED A
SCALE 3"=1 FOOT

FORGED IRON STERN FRAME

SCALE 1/2"=1 FOOT

AREA OF RUDDER = 147.25 sq ft

CENTRE OF GRAVITY = 3.53 FT FROM CE OF PINILES

SPEED = 11 KNOTS

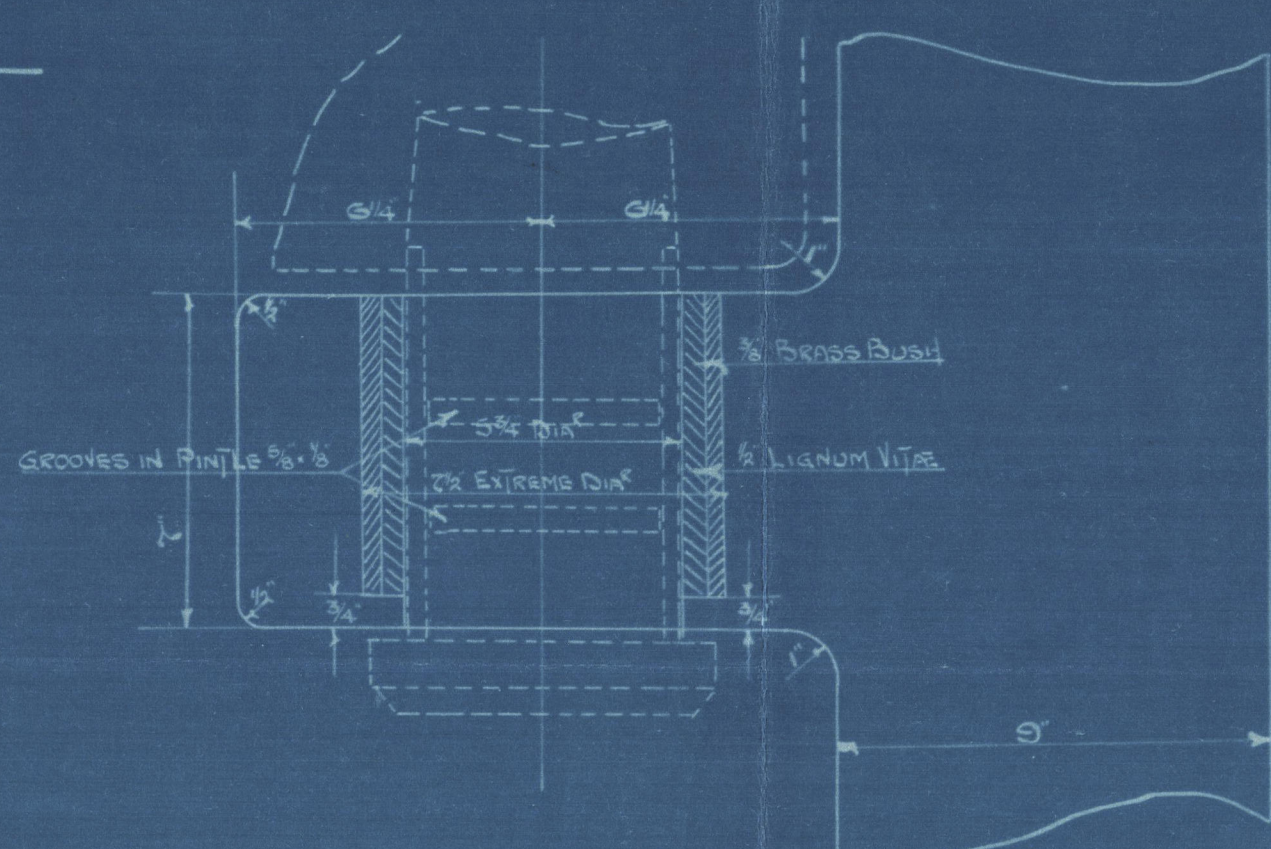
A x D = 400.3

DIAMETER OF RUDDER HEAD = 10

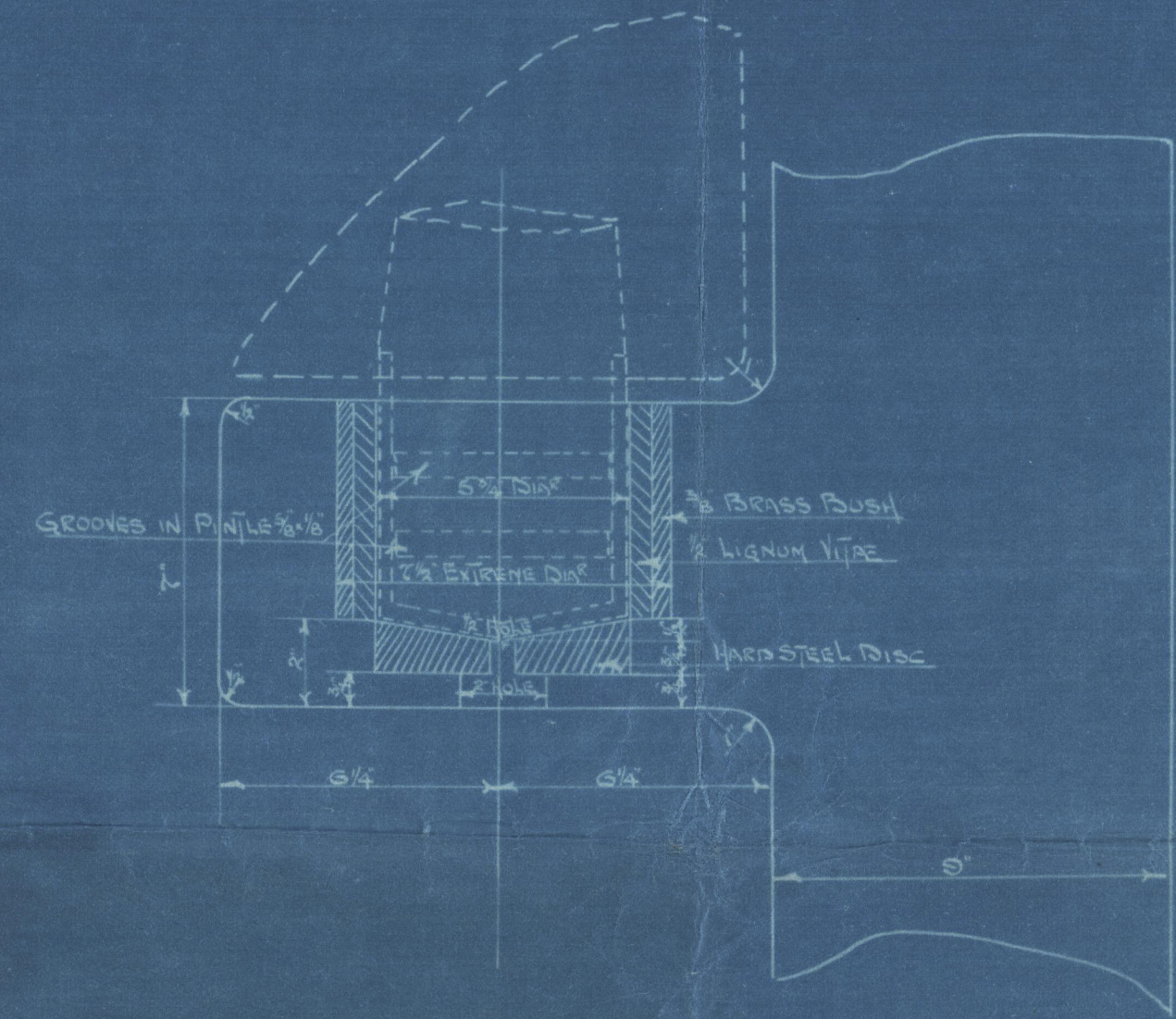
DIAMETER OF PINILES = 5

- TO PASS LLOYD'S SURVEY -

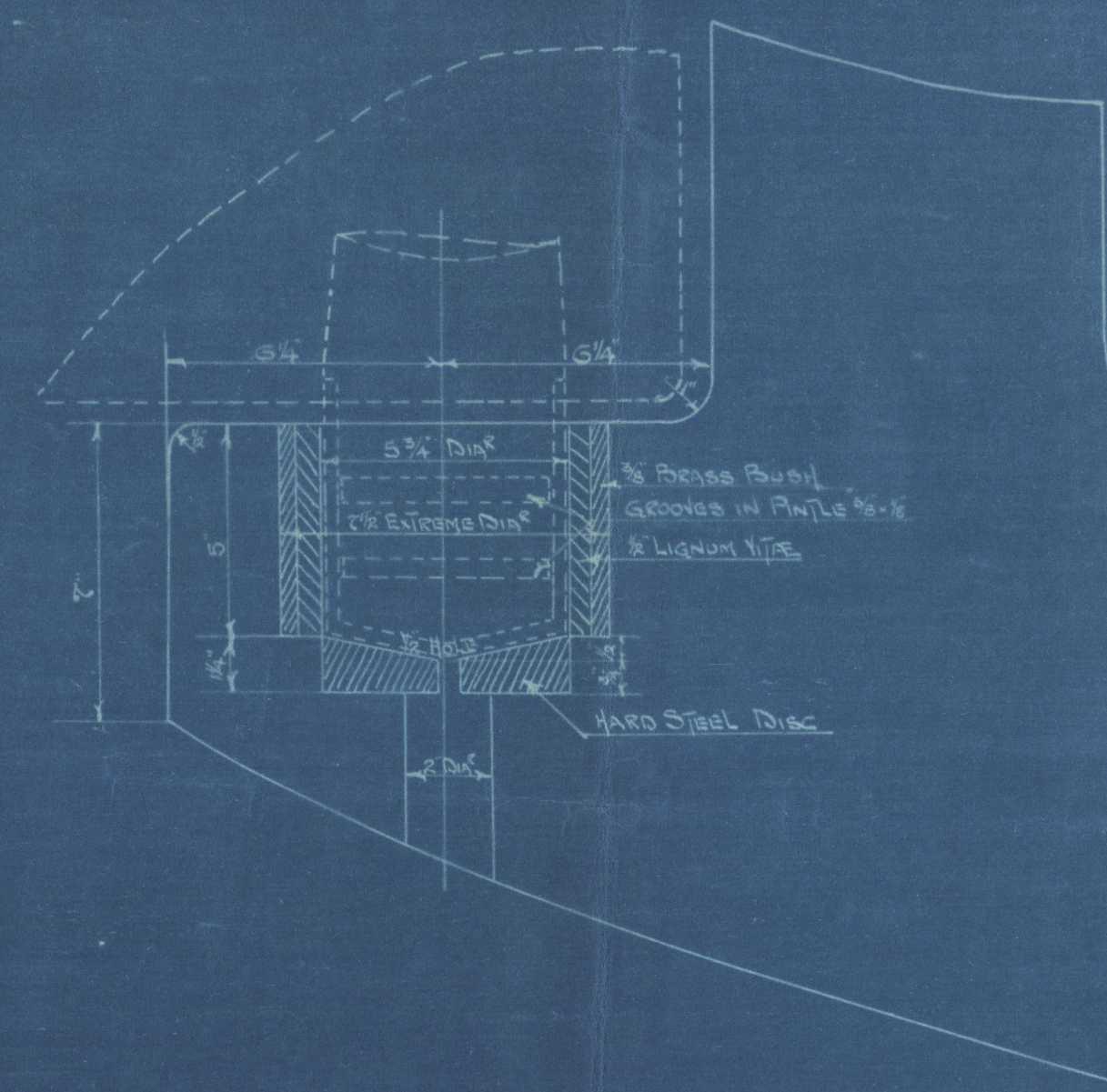
LLOYD'S LONGITUDINAL N° 36536.0



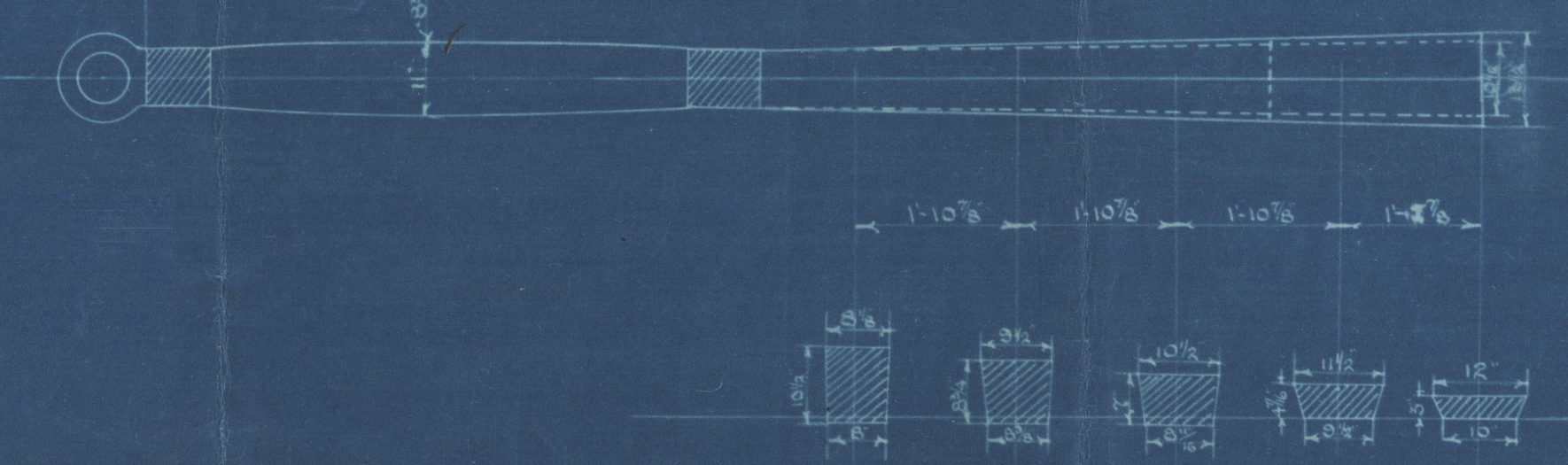
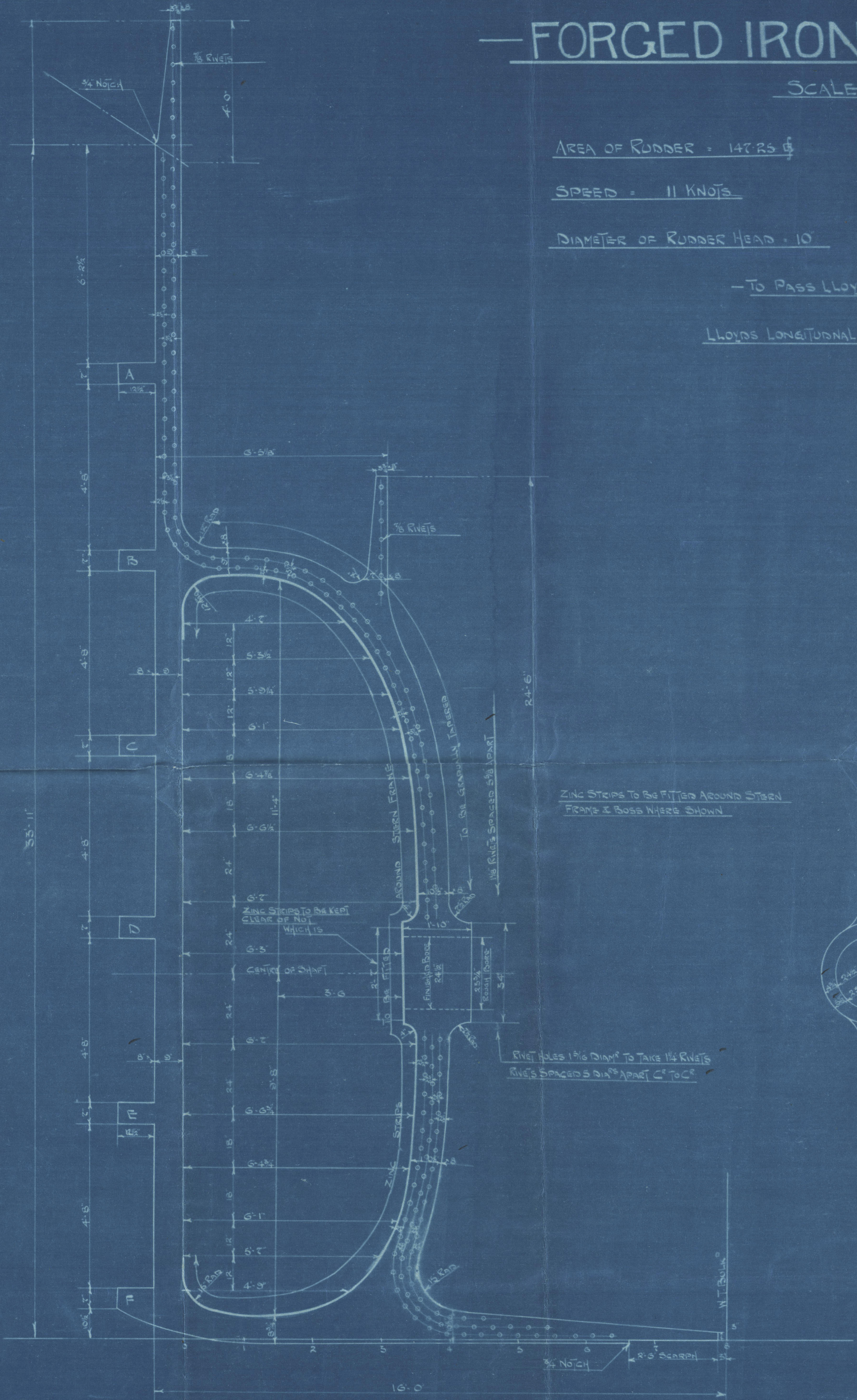
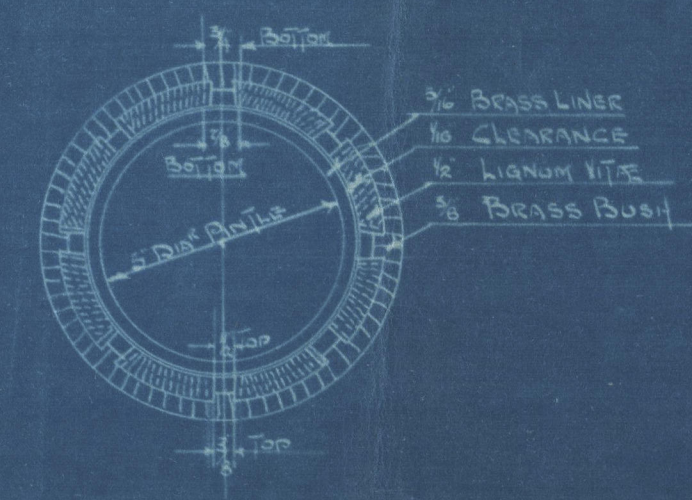
GUDGEONS B, C, D, E



BOTTOM GUDGEON F

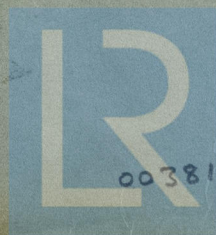


DETAIL OF BUSHING IN GUDGEONS
SCALE 3"=1 FOOT



23.2.17

Hoyd



© 2020

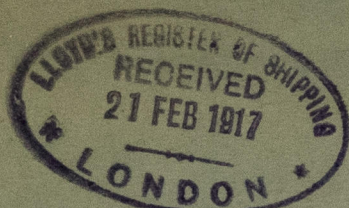
003816-003823-0253

Lloyd's Register
Foundation

Palmer's SB + Iron Light

N^o 878

Plan of Stern Frame



S.S. "British Light"

Mustari &

Nwc. 40582.



© 2020

Lloyd's Register
Foundation

003816-003823-0253 1/2