

# Lloyd's Register of Shipping.

## SURVEYS FOR FREEBOARD.

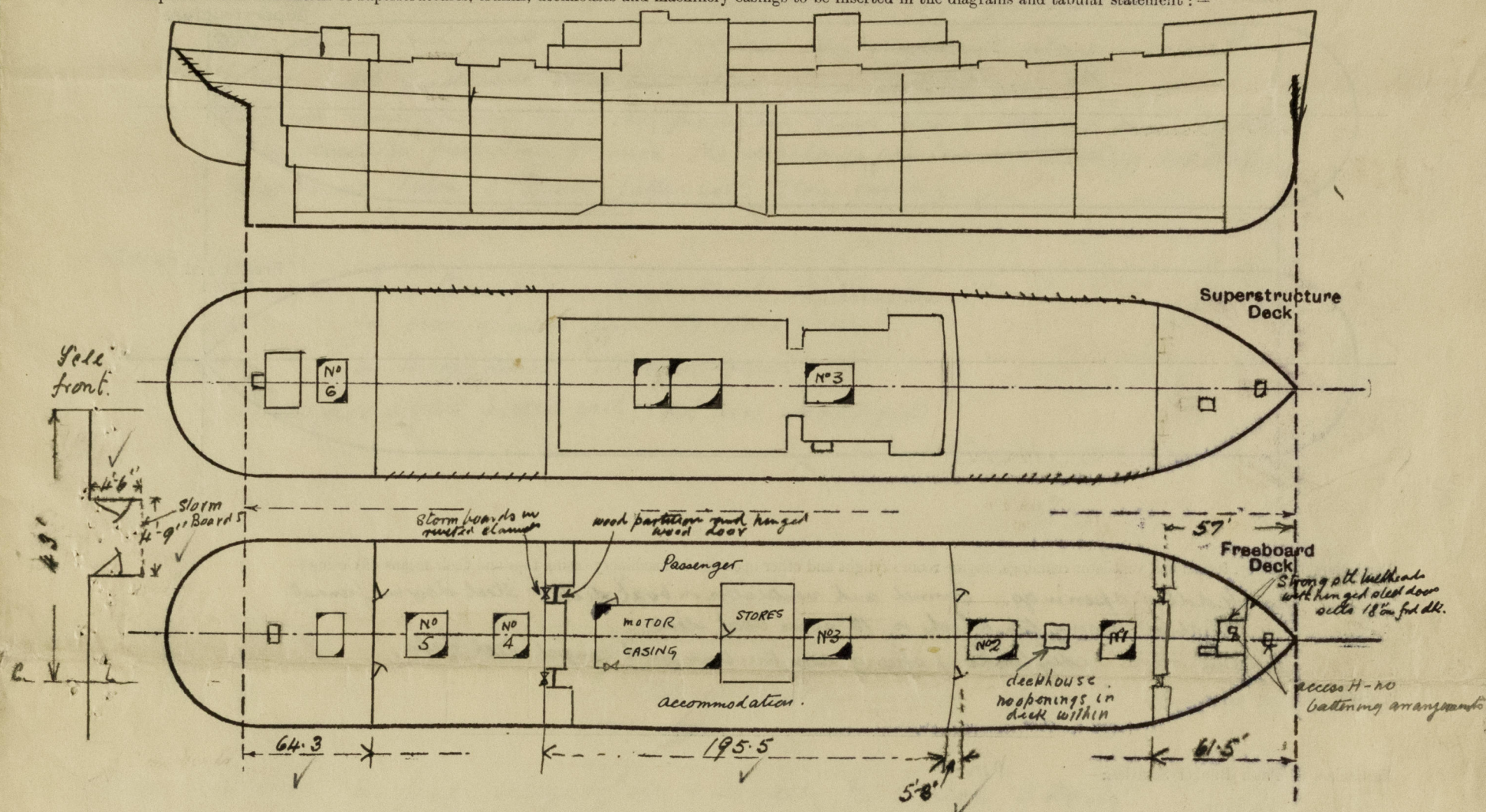
(CONDITIONS OF ASSIGNMENT.)

Index No. \_\_\_\_\_  
(For London Office only).

F.31

Ship's Name *EMPIRE GRACE*Port of Survey *Belfast*Official Number *168508*Surveyor's Signature *Wm. Balfour*Nationality and Port of Registry *British. Belfast*Date of Survey *during construction.*

Disposition and dimensions of superstructures, trunks, deckhouses and machinery casings to be inserted in the diagrams and tabular statement:—



Particulars of Superstructures, Trunks, Casings, Deckhouses.

	Coaming	Plating	Stiffeners	Spacing	End Attachments of Stiffeners	Size of Openings	Height of Sills	Height of Casings
Poop Bulkhead ...	34"	34"	5" 3 x 37 BA	30"-31"	welded T+B.	2 @ 62" x 26"	24"	✓
Raised Quarter Deck Bulkhead ...	✓							
Bridge, After Bulkhead ...	30"	30"	5" 3 x 37 A	30"-34"	welded T+B.	2 @ 69" x 60" 5 @ 21" x 47"	15"	✓
Bridge, Forward Bulkhead ...	41"	41"	9" 3 1/2 x 43 BA	30"-31"	welded T+B.	2 @ 69" x 60"	15"	✓
Forecastle Bulkhead ...	30"	30"	4 x 2 1/2 x 32 BA	30"-31"	welded T+B.	2 @ 48" x 63" 3 @ 24" x 30" x 66"	15"	✓
Trunk, Aft ...								
Trunk, Forward ...								
Exposed Machinery Casings on Freeboard or Raised Quarter Decks ...								
Exposed Machinery Casings on Superstructure Decks ...								
Machinery Casings within Superstructures not fitted with Class I Closing Appliances ...	44"	27"	3 x 2 1/2 x 31 L + 2 double BA's	34"	top mounted to beam 1 @ 24" x 24" (S) Hm taken from deck 1 @ 24" x 69" P.		30"	15" ✓
Deckhouses on Flush Deck Ships ...								

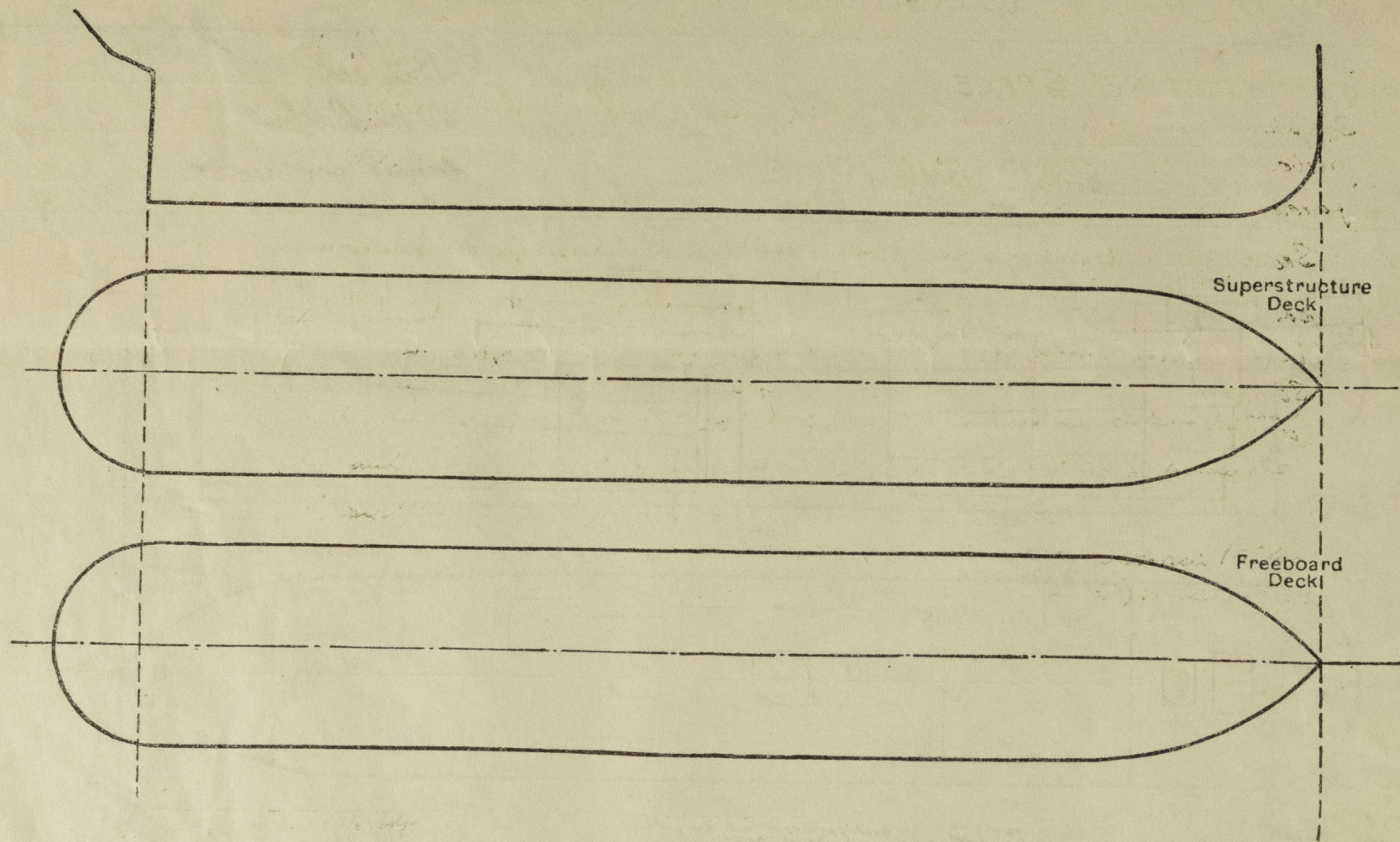
Particulars of Closing Appliances (state if capable of being manipulated from both sides).

Poop Bulkhead ...	Hinged steel plate with wood frame operated both sides	✓	See C11
Raised Quarter Deck Bulkhead ...	✓		
Bridge, After Bulkhead ...	2 openings with storm boards in rusted channel full height 5" hinged steel doors with wood frame attached operated both sides	✓	Hinged steel doors (double) one half operated both sides. The other half secured with slip bolts.
Bridge, Forward Bulkhead ...	Hinged steel W.T. door secured by toggle operated both sides	✓	
Forecastle Bulkhead ...	2 openings with storm boards in rusted channel full height	✓	
Exposed Machinery Casings on Freeboard or Raised Quarter Decks ...	3 hinged steel doors, one with rubber joint weather tight	✓	operated both sides
Exposed Machinery Casings on Superstructure Decks ...			
Machinery Casings within Superstructures not fitted with Class I Closing Appliances ...	Port. hinged steel door. operated both sides : hinged steel flap. on Star side secured by slip bolt.	✓	
Deckhouses on Flush Deck Ships ...			



# PARTICULARS OF PROTECTION TO OPENINGS, ETC.

The following diagrams should be used to indicate the positions of cargo and coaling hatchways, gangway, cargo and coaling ports, ventilators, companionways, etc., which would affect the seaworthiness of the ship:-



Particulars of fiddle, funnel and ventilator coamings, engine room skylight and other openings in machinery casing tops and their means of closing:-

No fiddle openings. Funnel and ventilation on boat deck. Steel door in funnel 18" above casing top which is 12" above boat deck.  
Engine room skylight of strong construction with hinged steel flaps

Particulars of Flush Bunker Scuttles:-

None

Particulars of Companionways:- On forecastle deck, leading below, steel with hinged steel door on aft side sill 18" in freeboard deck within bridge, access to tunnel. Steel door sill 14" on bridge deck in forward end of deck house, steel door, sill 15", rubber joint secured by toggles. Within bridge, door in internal bulkhead, hinged steel sill 9" Within bridge deck house or on bridge deck, stairways lead to foreward deck, deck house and companionways of strong steel construction, flaps of steel or steel with wood frame, sills 15" to 17" above steel deck, about 13" minimum above asphalt how to be laid over passenger accommodation

Particulars of Ventilators in exposed positions on freeboard and superstructure decks:-

On forecastle deck to spaces within forecastle and below foreward deck  
3 coal 0 13" dia; 2, screw down man-holes 0 18" dia coam. 36" by rule thickness  
Type Vents 30 8" x 4" + 20 16" x 4" 36" x 4". Air change vents 4", 4 1/2", 6" dia with canvas caps  
Freeboard deck: After well  
2 Funnel top 0 9" dia; 1 Funnel top 0 15" dia; 4 coal 0 10" dia; coams 33" by rule thickness  
Bridge Deck to spaces below freeboard deck 8 1/2" 5" air change vents with secured caps  
70 10" dia; 20 15" dia coal vents coam 27" rule thickness  
Type Vents 50 20" x 4" 10 16" x 4" x 30" high  
Poop Deck to spaces below freeboard deck  
50 10" dia; 40 18" dia coal coam 33" rule thickness. Type vents 20 16" x 10" x 33 1/2"  
Coal vents + funnel tops provided with pumps and canvas covers. Type vents with canvas covers  
In addition on deck house in fore well, on bridge + poop ventilators fitted to open above the foreward deck 9" to 18" dia rule coam and thickness, no closing appliances

Particulars of Air Pipes in exposed positions on freeboard, raised quarter, or superstructure decks:-

Foreward D<sup>1</sup> 20 3" fore peak 10 2 1/2" dia to No 1 27" high  
Freeboard D<sup>1</sup> Forward well:- 20 2 1/2" dia to No 1 DR 40 2 1/2" to No 2 DR. 20 2 1/2" dia to No 3 all 30" high  
After well:- 110 4" dia to O.F. bunker; 20 2 1/2" dia drain hat No 5 shell; 20 2 1/2" dia No 8 DR all 30" high  
Bridge D<sup>1</sup> 20 2 1/2" dia to No 3 DR; 20 2 1/2" dia to cofferdam; 20 2 1/2" + 20 4" to No 4 DR; 20 2 1/2" dia + 20 4" dia to No 5  
20 2 1/2" dia to cofferdam; 20 3" dia to No 7; 30 4" dia to O.F. tanks; 20 2 1/2" dia to drain hat No 4 shell all 30" high  
Poop D<sup>1</sup> 10 2" dia to scupper drain; 10 2 1/2" dia to No 8 DR tank; 20 3" to after peak  
Air pipes to oil fuel tanks + bunkers fitted with wire gauge  
Remainder fitted with canvas covers

"EMPIRE GRACE"

Particulars of Gangway Cargo and Coaling Ports:-

Between freeboard deck and bridge deck about amidships. Openings 4' x 6' Hinged steel door of strong construction closed watertight with 2 channel strong bars. ✓  
Mutton port doors in shell of No 4 & 5 main tween decks 2 port, 2 starboard under water type door. sill lowest door approximately 30" 0" above keel. ✓

Particulars of Scuppers and Sanitary Discharge Pipes:-

Scuppers from weather decks and after part of forecastle led overboard and below freeboard deck through open bends. ✓ Scuppers from stern at fore end of forecastle led to drain hat on crown of fore peak tank ✓

Scuppers and discharges from bridge space (passenger accommodation) from poop space and deck houses on same led overboard above or below the L.W.L. with malleable cast iron storm valves at ship's side ✓

Scuppers from spaces below the freeboard deck led to keels or drain tanks. ✓ A separator is fitted on 3<sup>rd</sup> deck, the discharge (enclosed circuit) is led through ship's side below 3<sup>rd</sup> Deck fitted with storm valve. ✓

Particulars of Side Scuttles:-

In steering gear compartment 10" clear glass ✓

In crew quarters aft 12" clear glass ✓

In Bridge space 12" clear glass ✓

All side lights fitted with cast iron deadlights ✓

Vertical distance of Sill of lowest Side Scuttle above top of keel In steering gear compartment approx 37' 6" above keel ✓

Particulars of Guard Rails:- on poop, bridge + fore + in wells 3' 8" high 3 Rails stanchions about 4' 6" apart ✓

Particulars of Gangways, Lifelines, etc.:-

Provision for lifelines P.T.S. in forward and after wells

## Particulars of Freeing Arrangements.

	Length of Bulwark	Height of Bulwark	Size of Freeing Ports	Number each side	Area each side	Rule area each side
After Well ... ..	open rails	✓				
Forward Well ... ..						

State position of each freeing port ... .. After Well:-

(F. and A. position and height above deck edge) Forward Well:-

State whether the freeing ports are fitted with shutters, bars, or rails, and give particulars of such:-

Additional area where sheer is less than standard.



PARTICULARS OF PROTECTION TO OPENINGS, ETC.

HATCHWAYS ON FREEBOARD AND SUPERSTRUCTURE DECKS.										
Description of Hatchway	← No 1	freboard No 2	deck No 3	No 4	No 5 →	Boat Dk No 3	Poop Dk No 6	Access H. 1, 2, 4, 5 No 6	Access H. 1, 2, 4, 5 No 6	Access H. 1, 2, 4, 5 No 6
Dimensions of Hatchway	18' x 18'	28' 4" x 18'	22' 8" x 18'	19' 10" x 18'	22' 8" x 18'	22' 8" x 18'	17' x 18"	36' 3" x 4'	33' 27"	36' 30"
COAMINGS	Height above Deck ... 33" ✓ Thickness { Sides ... 4 1/4 ✓ { Ends ... 4 1/4 ✓ Stiffeners ... 7 3/8 x 3/8 ✓ Brackets, Stays ... felled ✓	as for No 1 ✓	10" B.A. 7/16 ✓	as for No 1 ✓	as for No 1 ✓	33" as for No 1 ✓	33" as for No 1 ✓	30" 4 1/4 ✓	30" 4 1/4 ✓	10" B.A. 7/16 ✓
HATCH BEAMS	Number ... 3 ✓ Spacing ... even ✓ Scantling and Sketch ... 8' x 6 1/2" ✓ Bearing Surface ... 3 1/2" ✓	5 even ✓ 8' x 6 1/2" ✓ 15 1/2' x 38" ✓ 3 1/2" ✓	4 even ✓ 8' x 6 1/2" ✓ 15 1/2' x 38" ✓ 3 1/2" ✓	3 even ✓ 8' x 6 7/8" ✓ 16' x 38" ✓ 3 1/2" ✓	4 even ✓ 8' x 6 1/2" ✓ 15 1/2' x 38" ✓ 3 1/2" ✓	4 even ✓ 8' x 6 1/2" ✓ 12' x 32" ✓ 3 1/2" ✓	3 even ✓ 8' x 5 1/2" ✓ 12' x 32" ✓ 3 1/2" ✓	✓	✓	✓
FORE AND AFTERS	Number ... Spacing ... Unsupported Lengths ... Scantling* and Sketch ... Bearing Surface ...	✓	✓	✓	✓	✓	✓	✓	✓	✓
HATCH COVERS	Material ... 10 P. Thickness ... 2 1/2" How fitted ... f + a in group covers Bearing Surface ... 3" ✓	all as No 1.					hinged steel lids secured by hoops	hinged steel lids secured by rubber joint	W.P. 2 1/2" plating	2 1/2" ✓
Spacing of Cleats	24" ✓	24" ✓	24" ✓	24" ✓	24" ✓	24" ✓	24" ✓	24" ✓	secured by toggles	24" ✓
Number of Tarpaulins	2 ✓	2 ✓	1 ✓	2 ✓	2 ✓	2 ✓	2 ✓	2 ✓	1 ✓	1 ✓
<p>*Are wood fore and afters steel shod at all bearing surfaces? ✓</p> <p>Are battens and wedges efficient and in good condition? yes ✓</p> <p>Are tarpaulins in good condition and in accordance with rule requirements? yes ✓</p> <p>Are lashings provided in accordance with rule requirements? locking bars to weather deck cargo hatchways + No 3 within bridge ✓</p>										

No 6 hatchway trunked from poop deck to freeboard dk. No 3 trunked boat dk to bridge deck.

Particulars of any special features:— Access H. on forecastle deck for: 2' 9" x 2' 9". coam 6" above weather wood sheathing water tight steel lid rubber jointed secured by toggles. ✓

Access H. on poop 36" x 30" Coam 9" B.A., 2 1/2" wood cover, cleats & batten on. 2 tarpaulins. ✓

Access H. within forecastle on freeboard deck are protected by strong steel bulkheads openings in bulkhead closed by hinged steel doors. Sills on freeboard 18".— no battening arrangements to hatchways.

This vessel has been built to scantlings suitable for a draught of 18" in excess of that corresponding to the freeboard which could be assigned with a tonnage opening. ✓

She has been completed as a closed shelter decker with bulkheads fitted in the shelter tween decks reasonably water tight. The bulkheads in the shelter tween decks are caulked, the openings are closed by steel plates secured by 3/4" dia bolts spaced 4" with red lead jointing. Forward the bulkheads in tween decks are intact. E ledine cables have the usual W.T. connection. ✓

Endorsement at first survey and at surveys for renewal of Certificate:—

The fittings and appliances are in accordance with the particulars shown on this form (or as now modified) and are in good condition.