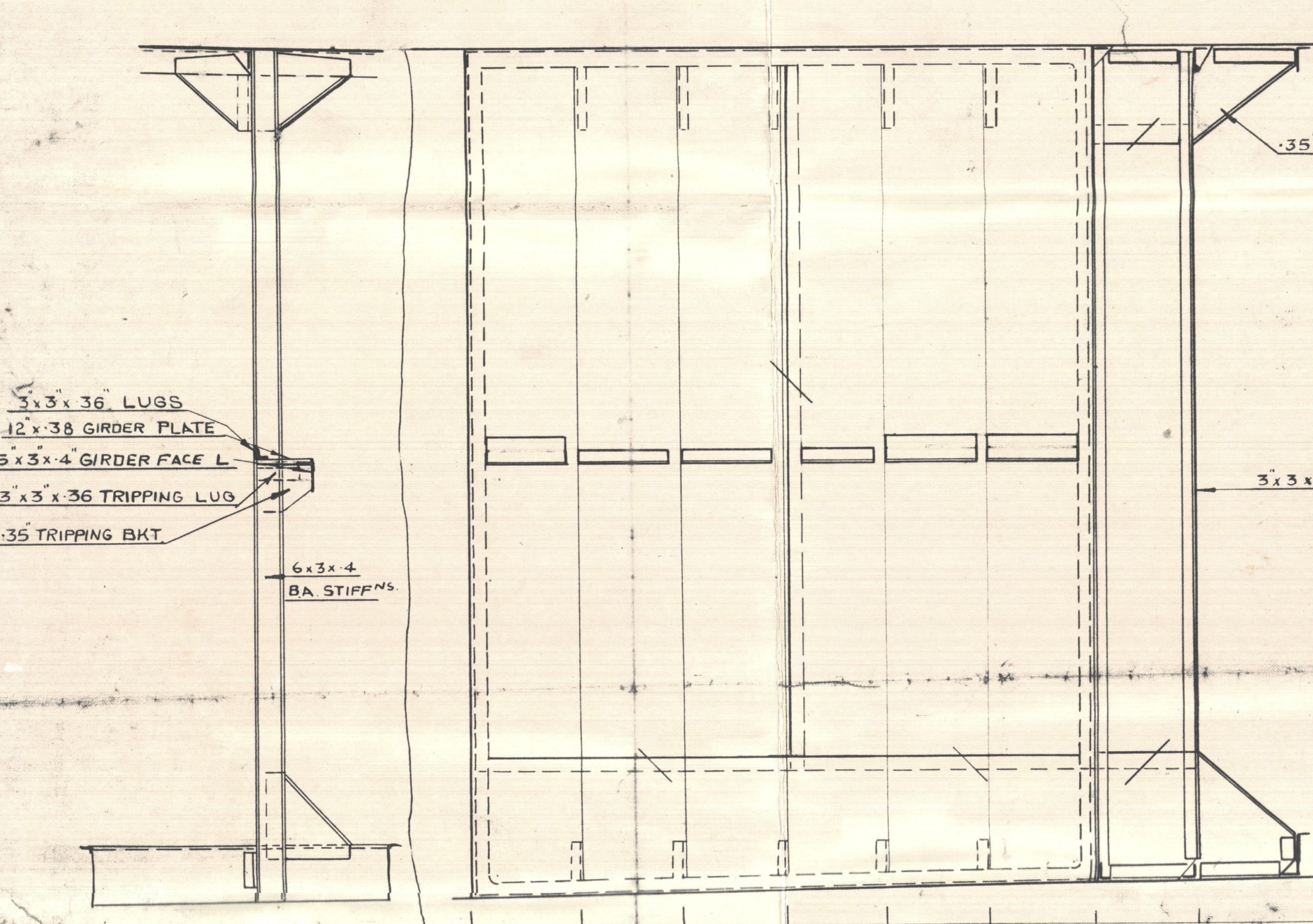
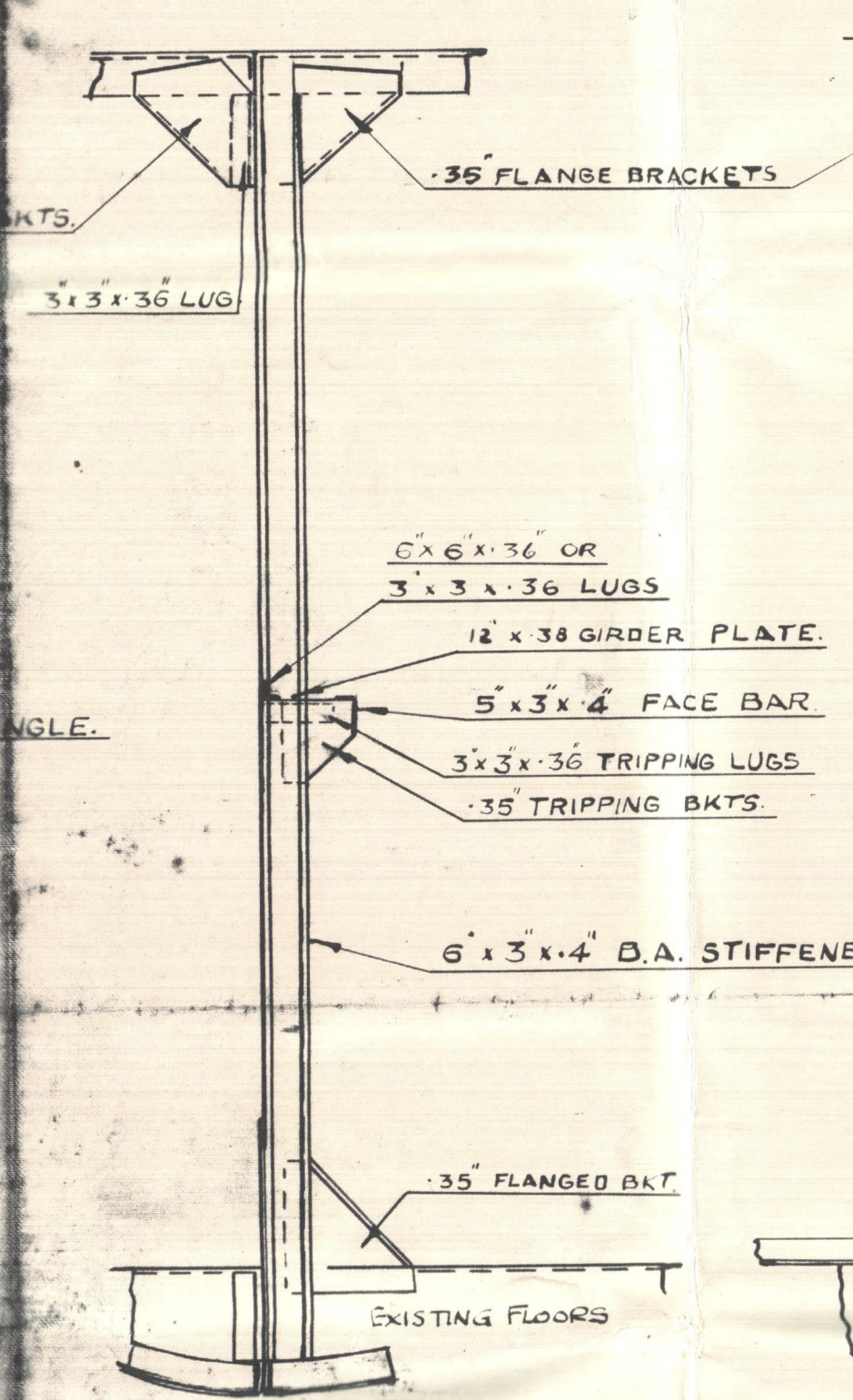


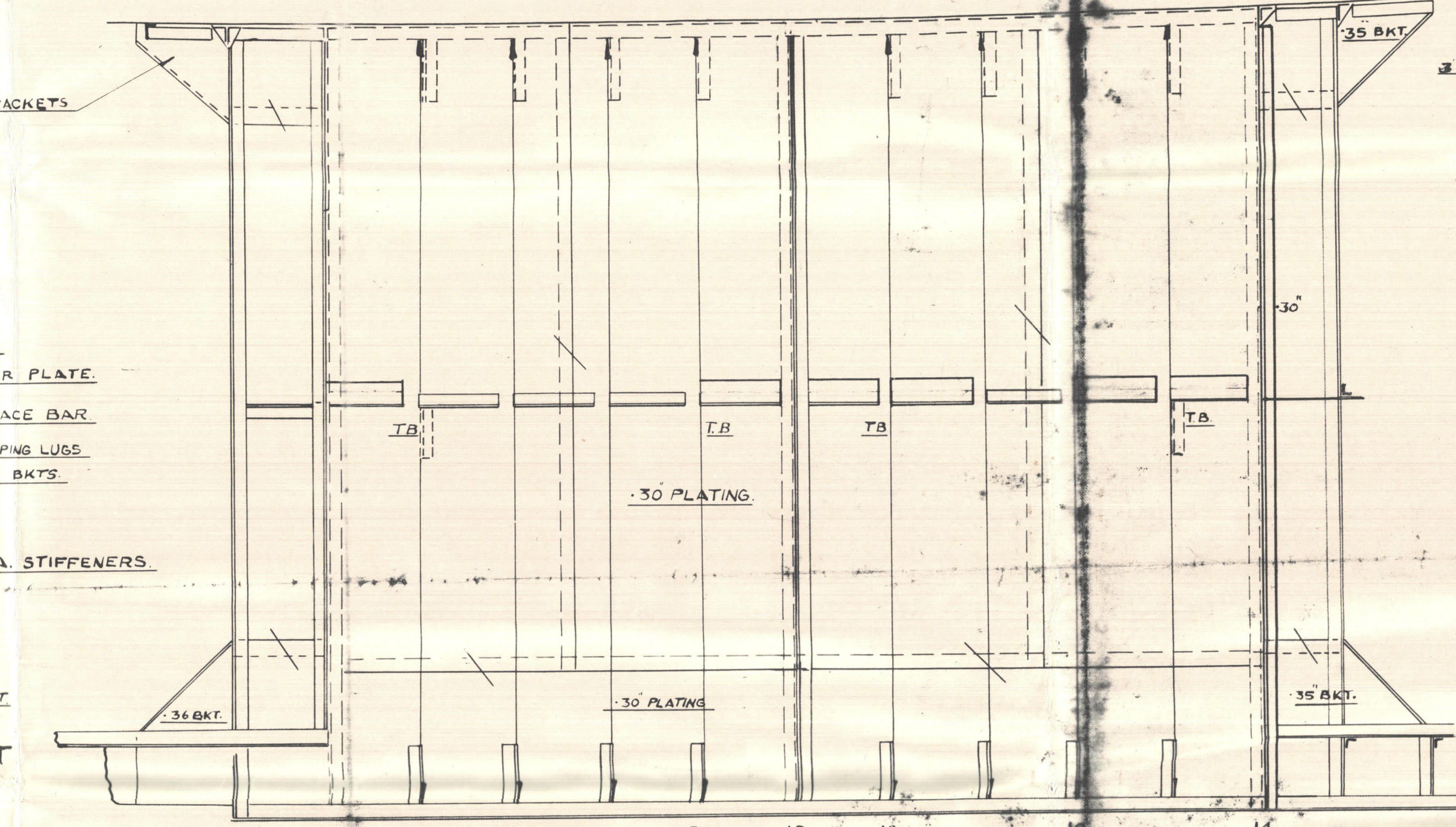
OIL TIGHT HATCHES TO EACH TANK TO RULE.  
COMBINED AIR & SOUNDING PIPES TO ALL TANKS.  
OF PATTERN APPROVED FOR 'TULIP FIELD'



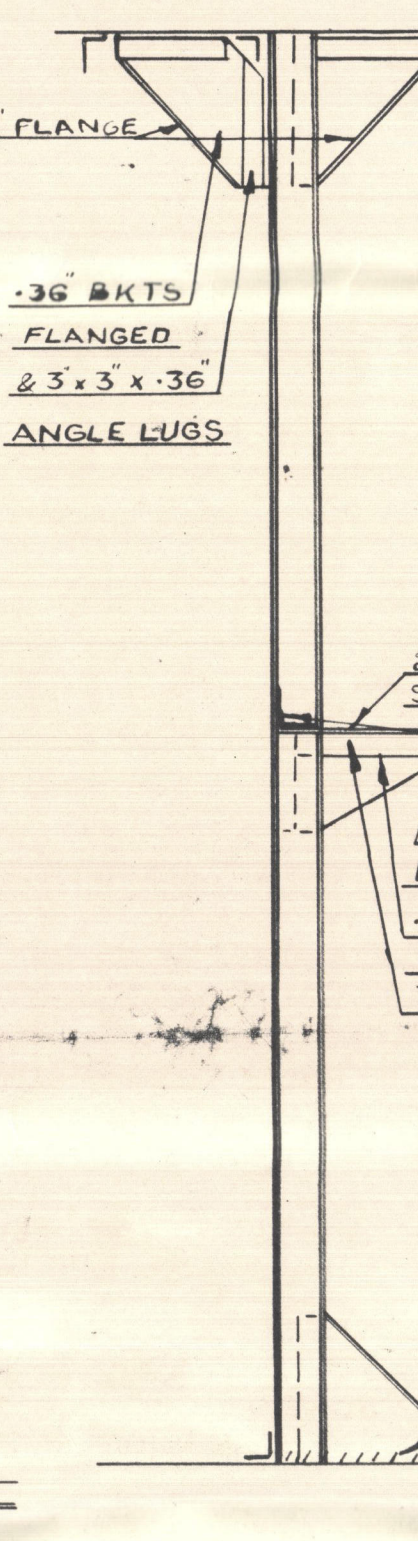
SECTION OF OT WING LONG BHD.  
ELEVATION OF WING LONG BHD.



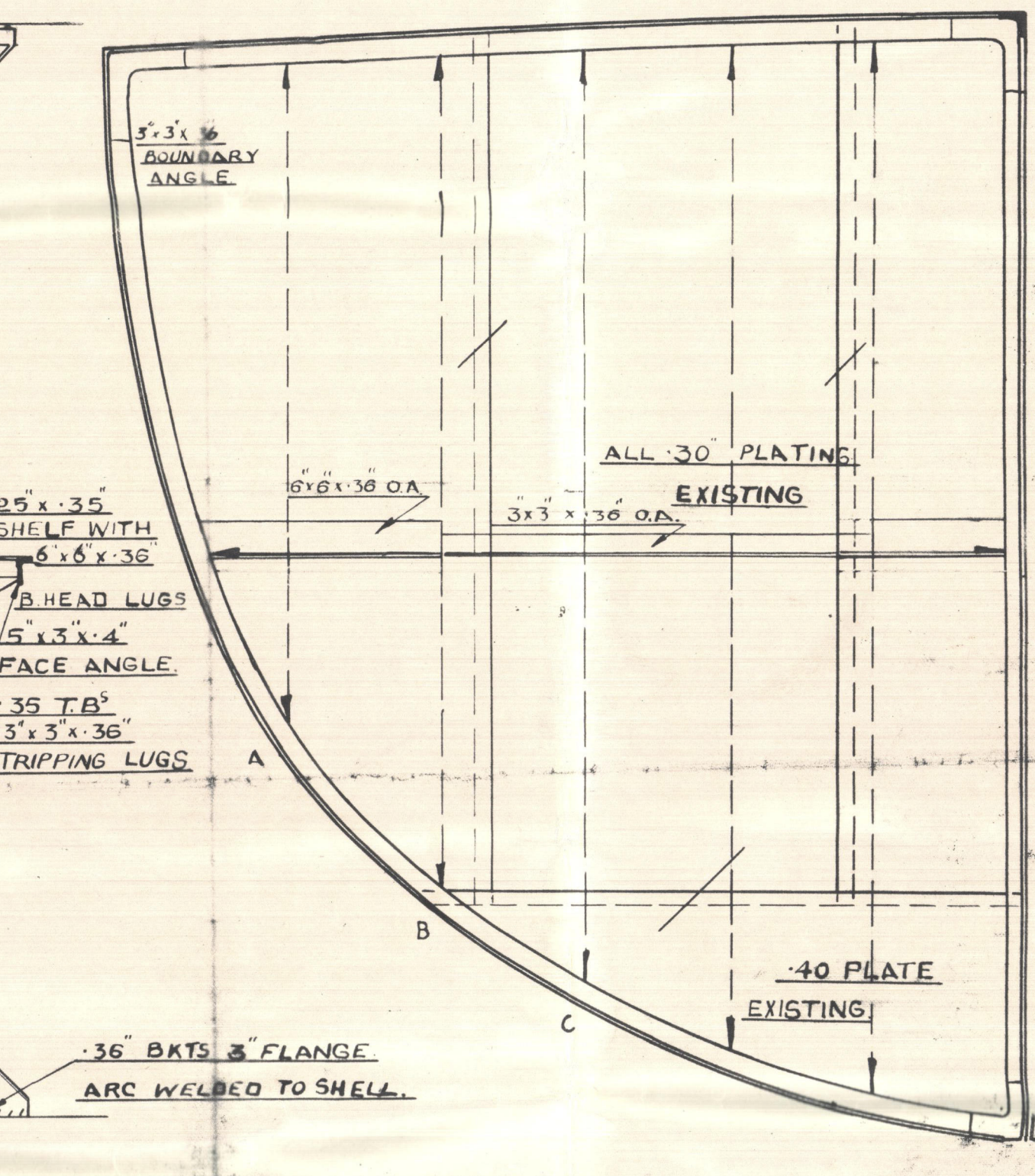
SECTION OF OT B.



ELEVATION OF OT BULKHEAD 24 TO 14.

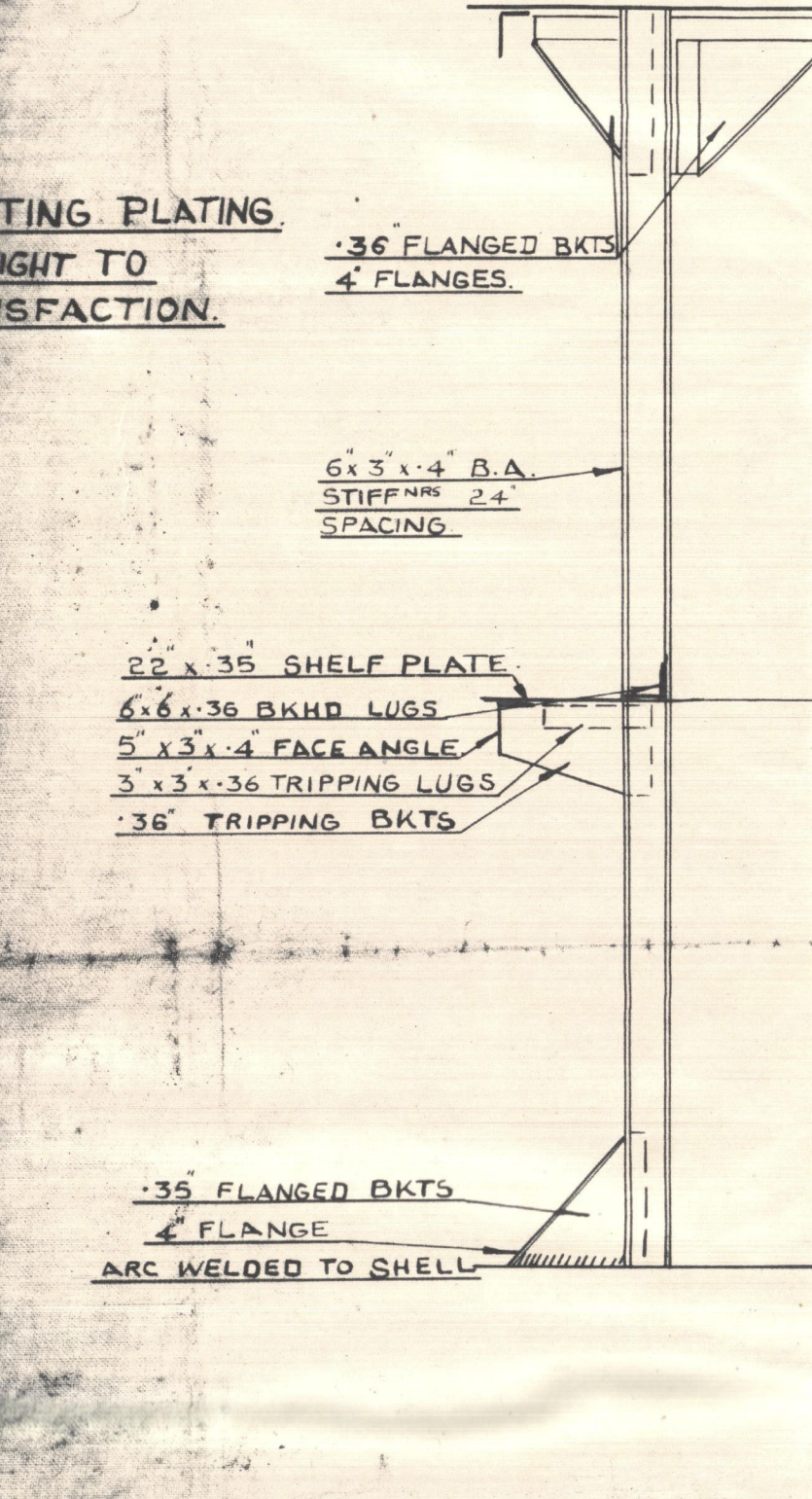


SECTION OF BHD 19.

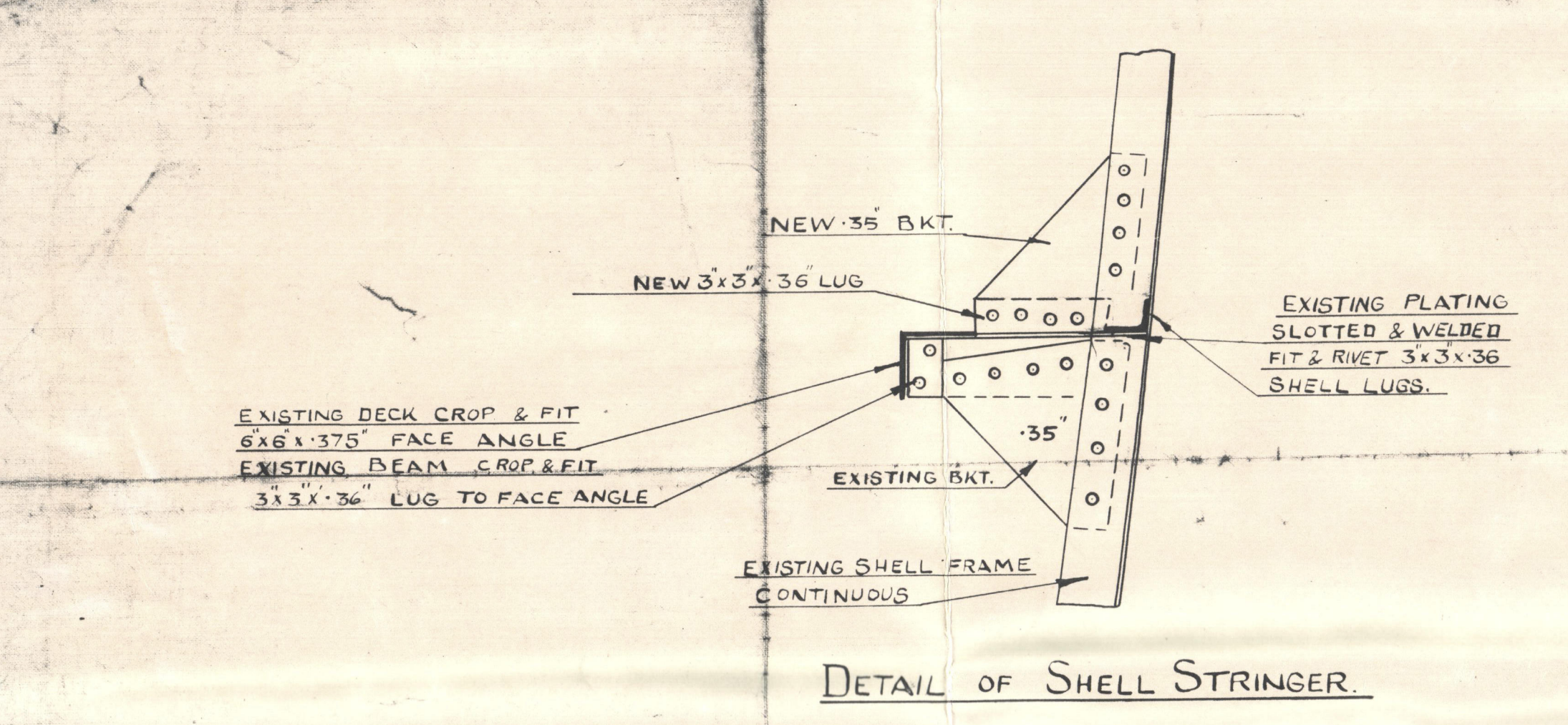
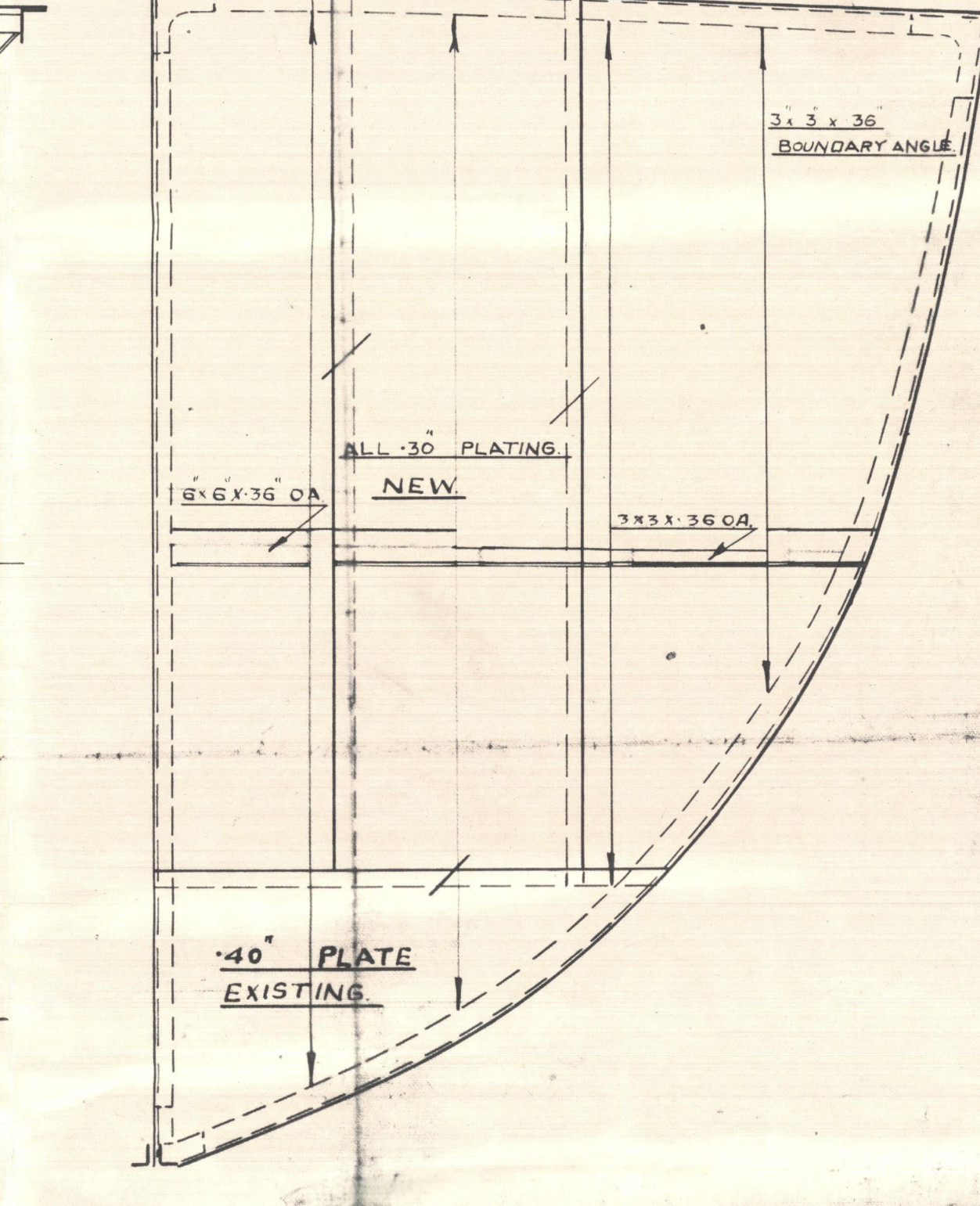


OT TRANSVERSE B HEAD 19.

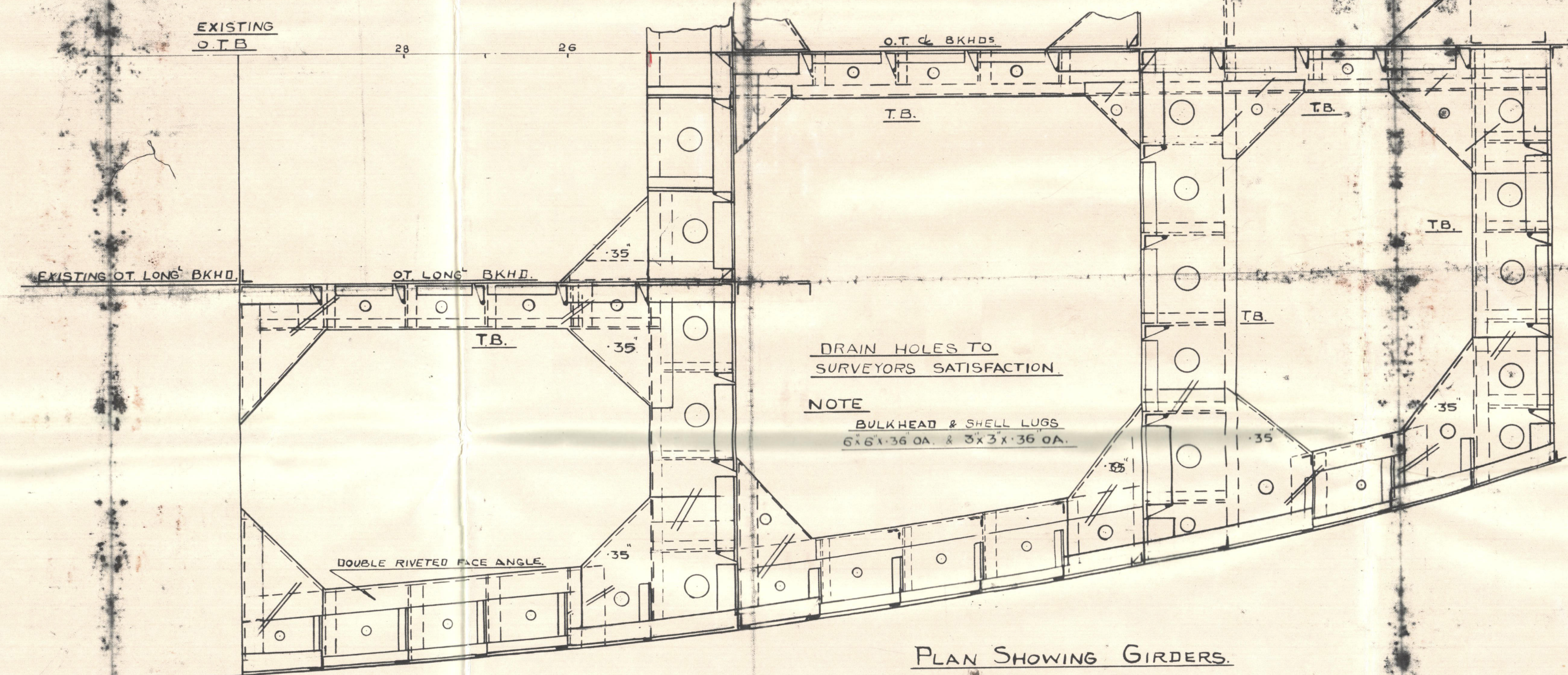
NOTE  
SEAMS OF EXISTING PLATING  
TO BE MADE OIL TIGHT TO  
SURVEYOR'S SATISFACTION.



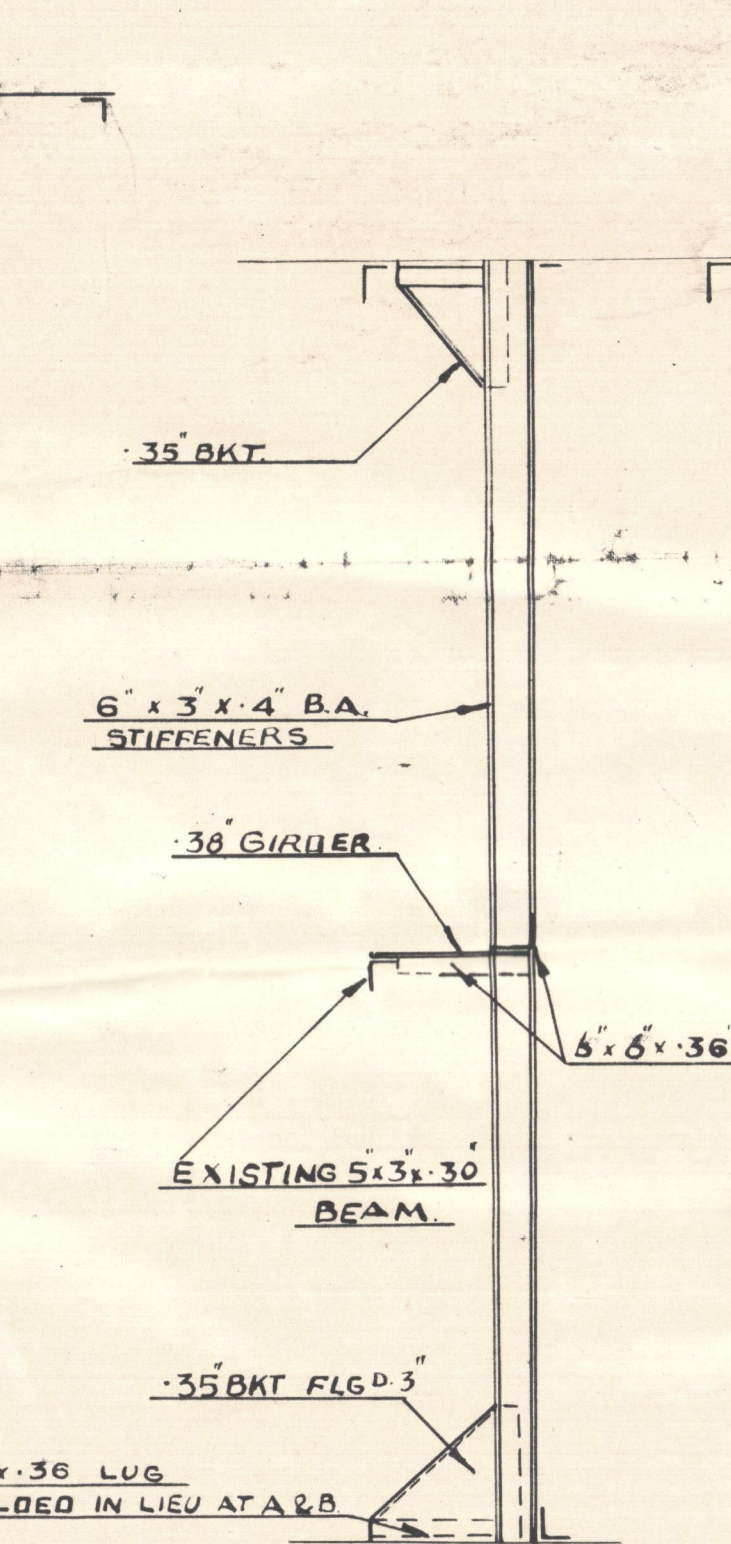
OT TRANSVERSE B HEAD 14.



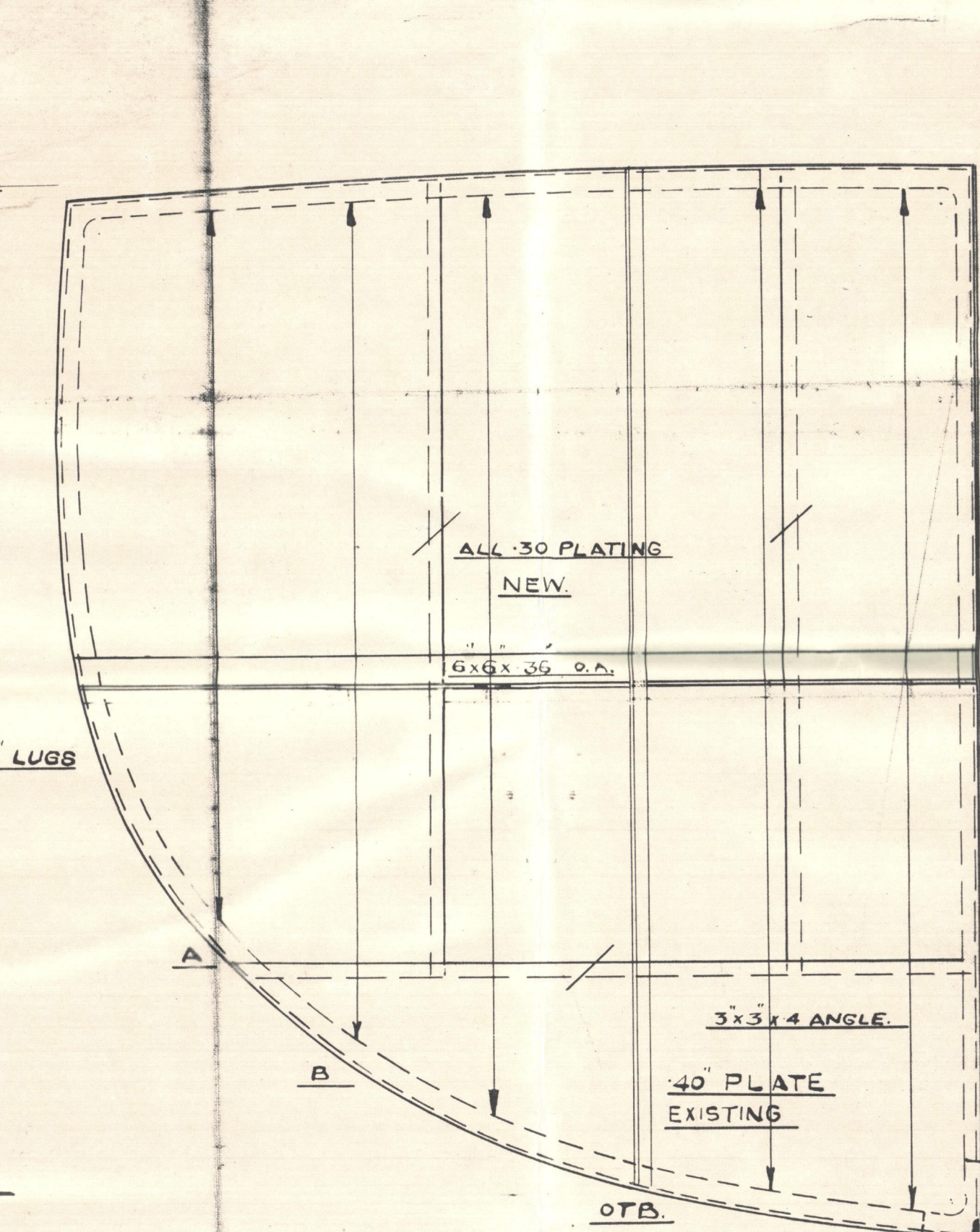
DETAIL OF SHELL STRINGER.



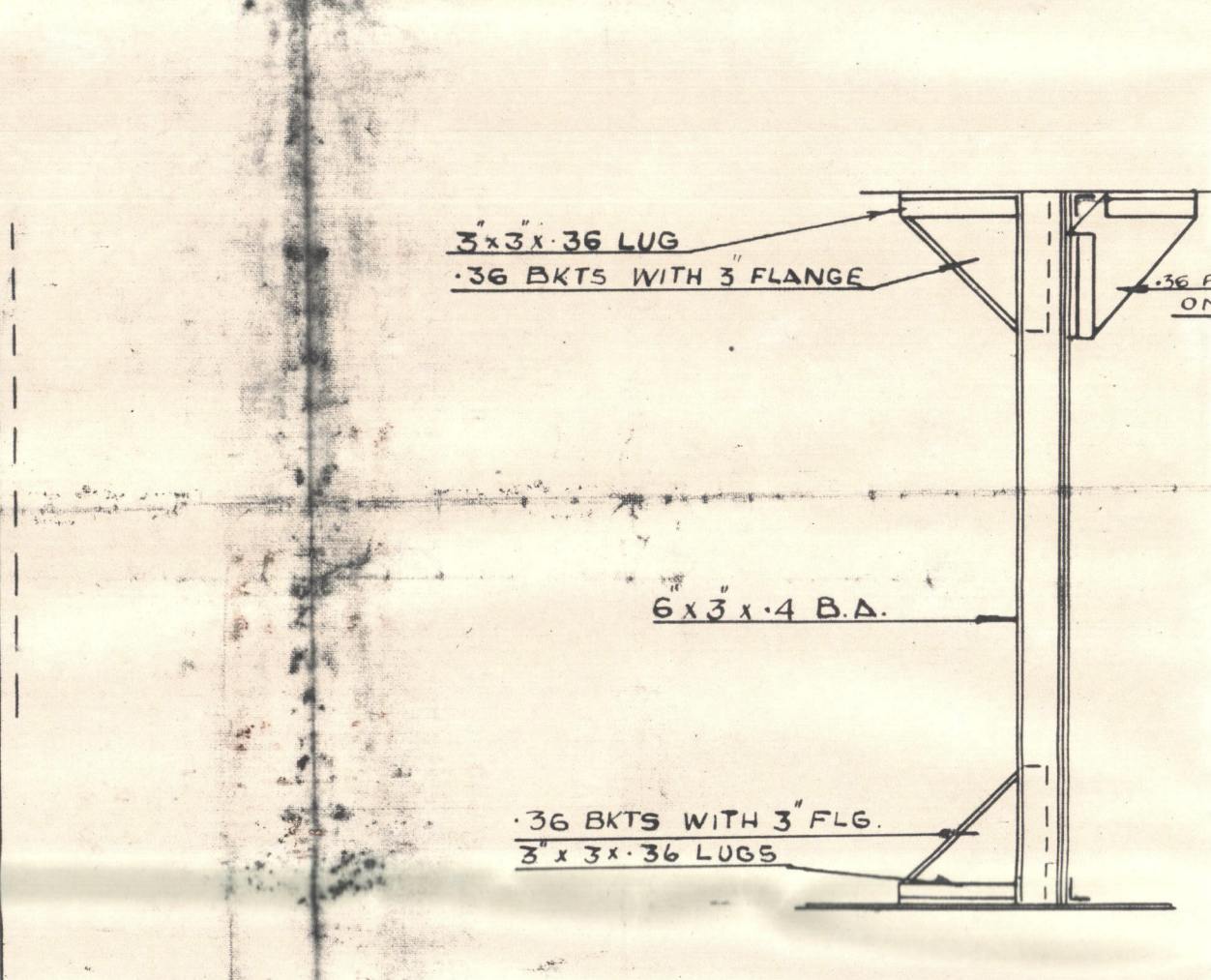
PLAN SHOWING GIRDERS.



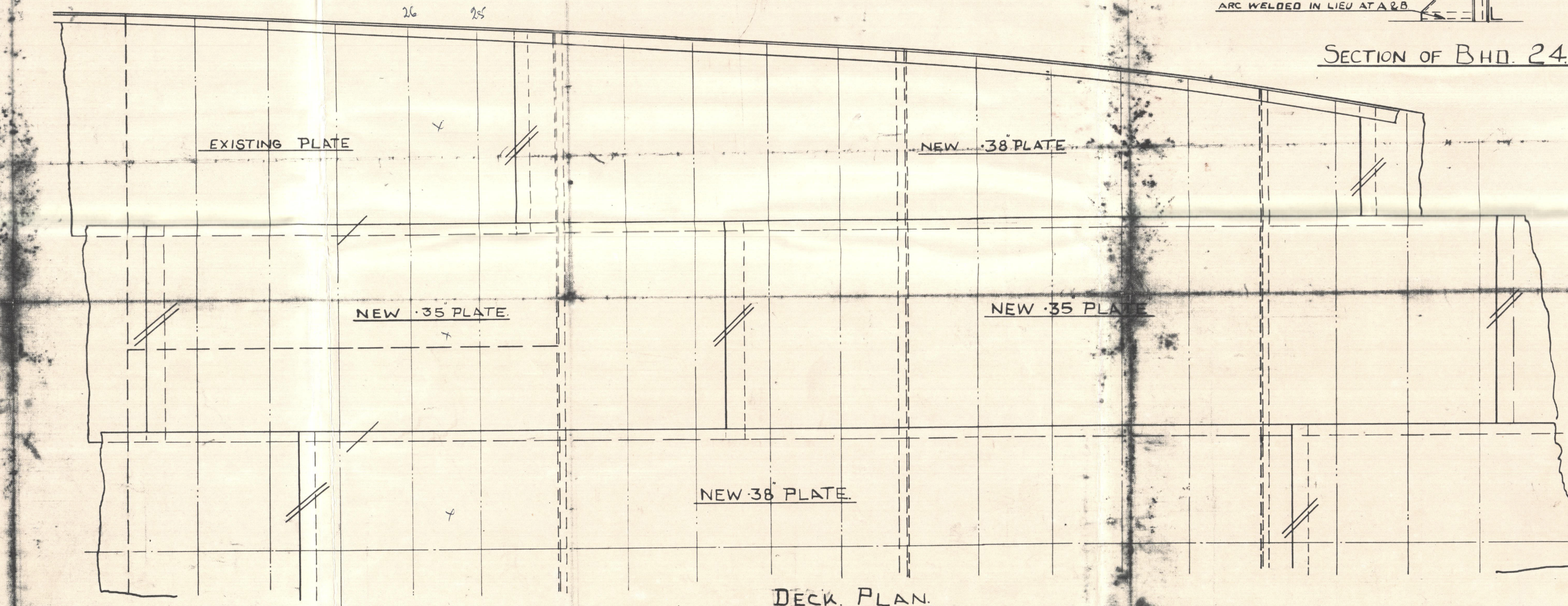
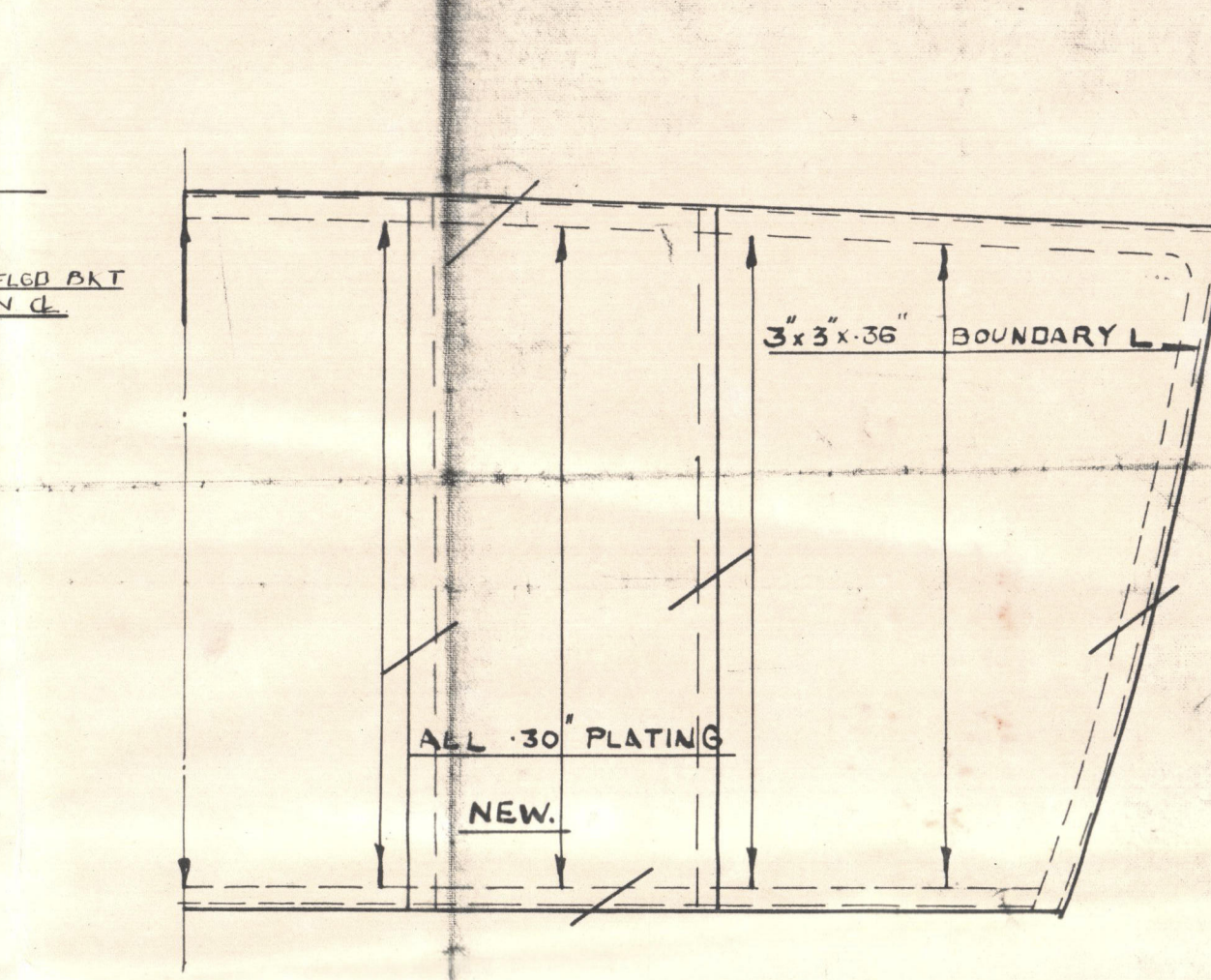
SECTION OF BHD 24.



ELEVATION OF OT B HEAD 24.



ELEVATION OF OT B. 13.



DECK PLAN.

EX SS "LINGAY."  
DETAIL OF BULKHEADS  
SCALE 1/2" = 1'-0"

Per: SLUDGE VESSEL "TULIPDALE"

GRAYSON ROLLO & CLOVER DOCKS LTD.  
BIRMINGHAM WORKS  
DRWN BY: [Signature]  
CHECKED BY: [Signature]  
DRAWING NO: 6798

© 2020  
Lloyd's Register  
Foundation

002808-003815-000



TULIPDAKE

Plan showing alterations  
effected. (Conversion 1948)



© 2020

Lloyd's Register  
Foundation

003808-003815-0001