

MV BRITISH PROGRESS

M.V. BRITISH PRUDENCE

MIDSHIP SECTION

SCALE $\frac{1}{2}$ " = ONE FOOT

DIMENSIONS - 463'-0" B.P. x 61'-6" x 34'-0" MLD TO UPPER DECK

CLASS LLOYDS 100 A1 CARRYING PETROLEUM IN BULK
LONGITUDINAL FRAMING AT BOTTOM AND AT DECK
ALL BULB ANGLES AND CHANNELS ARE N.B.S
ALL BULB PLATES ARE O.B.S

LLOYDS NUMERALS

D = 34 = 34
L x D = 463 x 34 = 15742.0
L (B x D) = 463 (61.5 x 34) = 44216.5
L/D = 463 / 34 = 13.62

EQUIPMENT NUMERAL

2ND LONGITUDINAL NUMERAL 1 (B x D) = 44216.5
POOP = 33.5
BRIDGE = 33.5
FOCSELE = 54.5
POOP HOUSE + F.B. CASINGS = 95.5
BRIDGE HOUSE = 40.75
OFFICERS HOUSE = 43.0
WHEELHOUSE = 42.5
EQUIPMENT NUMERAL 46244.5

EQUIPMENT LIST

2 BOWER ANCHORS 8 1/2 CWTs STOCKLESS
1 BOWER ANCHOR 6 1/2 CWTs STOCKLESS
1 STREAM ANCHOR 23 1/2 CWTs (EX STOCK)
300 FATHOMS 2 1/2 STWD LINK CHAIN CABLE
120 FATHOMS 4 1/2 (2 1/2) CIRCULAR STEEL WIRE GALV.
120 FATHOMS 3 1/2 (2 1/2) CIRCULAR STEEL WIRE GALV.
2 @ 100 FATHOMS 2 (2 1/2) WIRE HAWESERS
2 @ 100 FATHOMS 2 1/2 (2 1/2) WIRE HAWESERS

STRAIGHT TUMBLE HOME ABOVE UPPER DECK
10' AT UPPER BRIDGE DECK

40' POOP SIDE PLATING INCREASED
TO 50' IN WAY OF POOP FRONT

44 FORECASTLE SIDE PLATING

SHEERSTRAKE 7 1/2" x 40' AT ENDS
INCREASED TO 1 1/2" AT POOP FRONT
AND BRIDGE ENDS
67" x 27" CLEAR OF BRIDGE + BULKHEAD

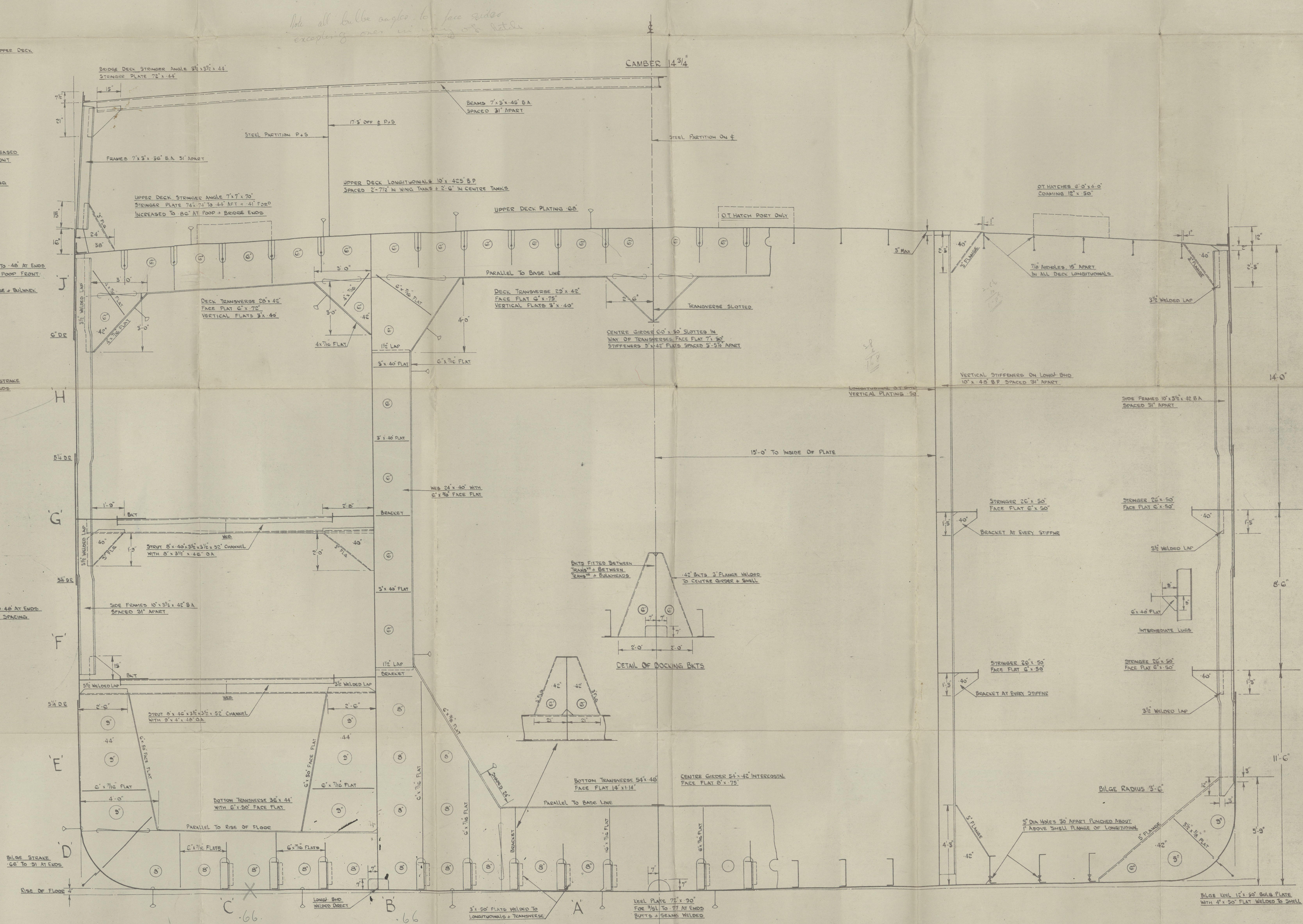
STRAKE BELOW SHEERSTRAKE
8 1/2" x 40' AT ENDS

SHOE 2 1/2" x 40' AT ENDS
+ 0.5" AT 31' FRAME SPACING
FOOT OF 3/16" FOR

STRAKE 'N' 60' FOR 10' TO 51' AT ENDS - 70' FOR 51' TO 172'
70' IN WAY OF 31' TRANSVERSE FRAMING FOR 63' IN WAY OF 27' TRANSVERSE FRAMING
STRAKE 'B' 60' FOR 10' TO 51' AT ENDS - 73' FOR 51' TO 172'
73' IN WAY OF 31' TRANSVERSE FRAMING 63' IN WAY OF 27' TRANSVERSE FRAMING
BUTTS + SEAMS WELDED

BOTTOM LONGITUDINALS - 17 x 48 x 4 x 4 - 68 CHANNELS
BOTTOM LONGITUDINALS IN WING TANKS LOOK OUTBOARD
BOTTOM LONGITUDINALS IN CENTER TANK LOOK TO STARS
BOTTOM LONGITUDINALS IN WING TANKS SPACED 2'-7 1/2"
BOTTOM LONGITUDINALS IN CENTER TANK SPACED 2'-6"

SECTION LOOKING AFT



YARD NO 89
YARD NO 90

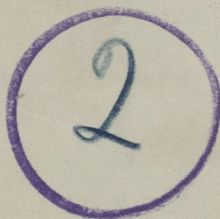
Middleby Section
as built

'British Prudence'

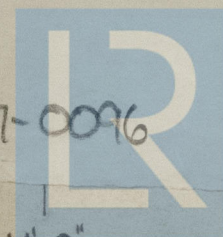


GLASGOW REPORT No. 73827

RECORDS DEPT.,
LONDON



003800-003807-0096



© 2020

Lloyd's Register
Foundation

14-0"