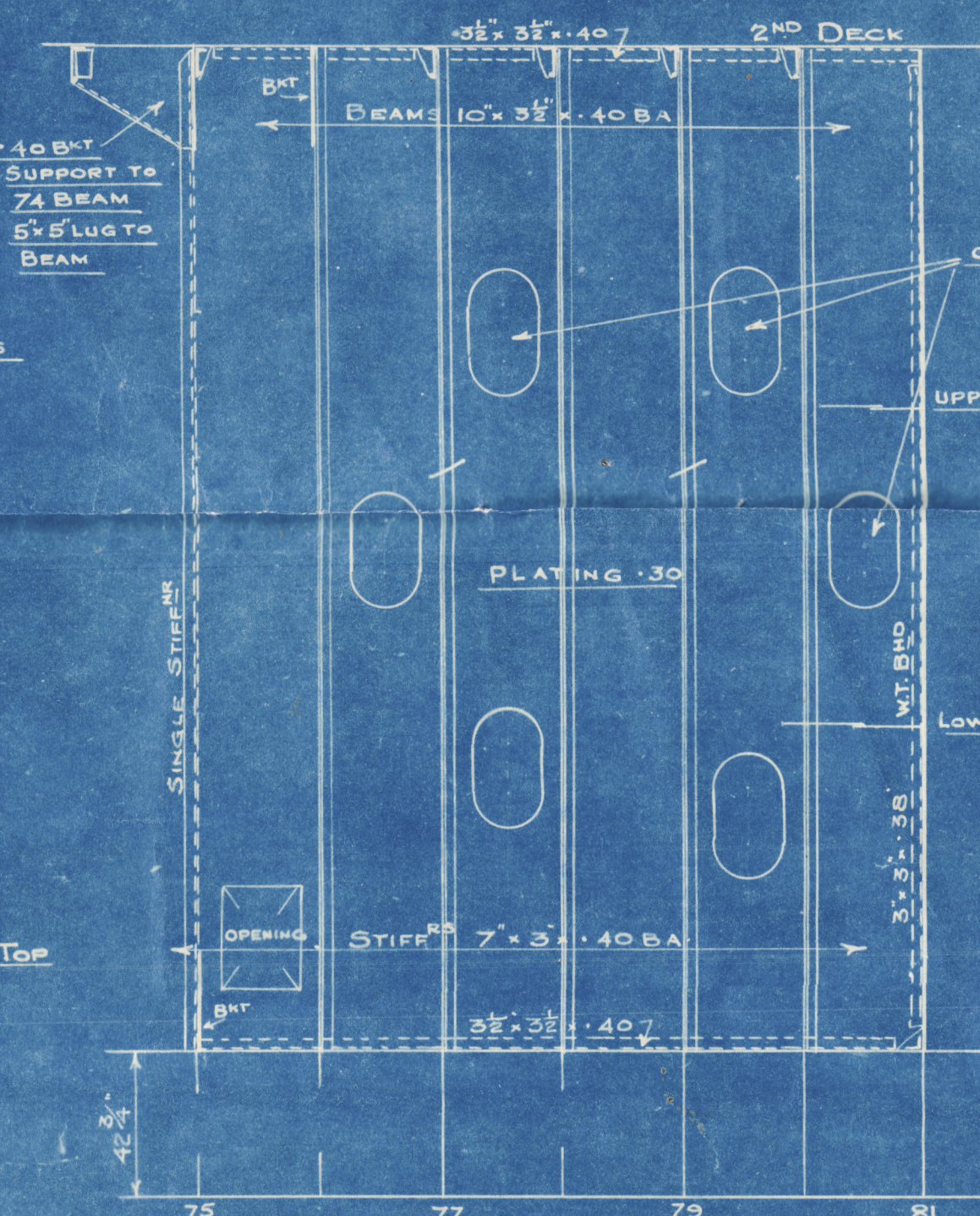
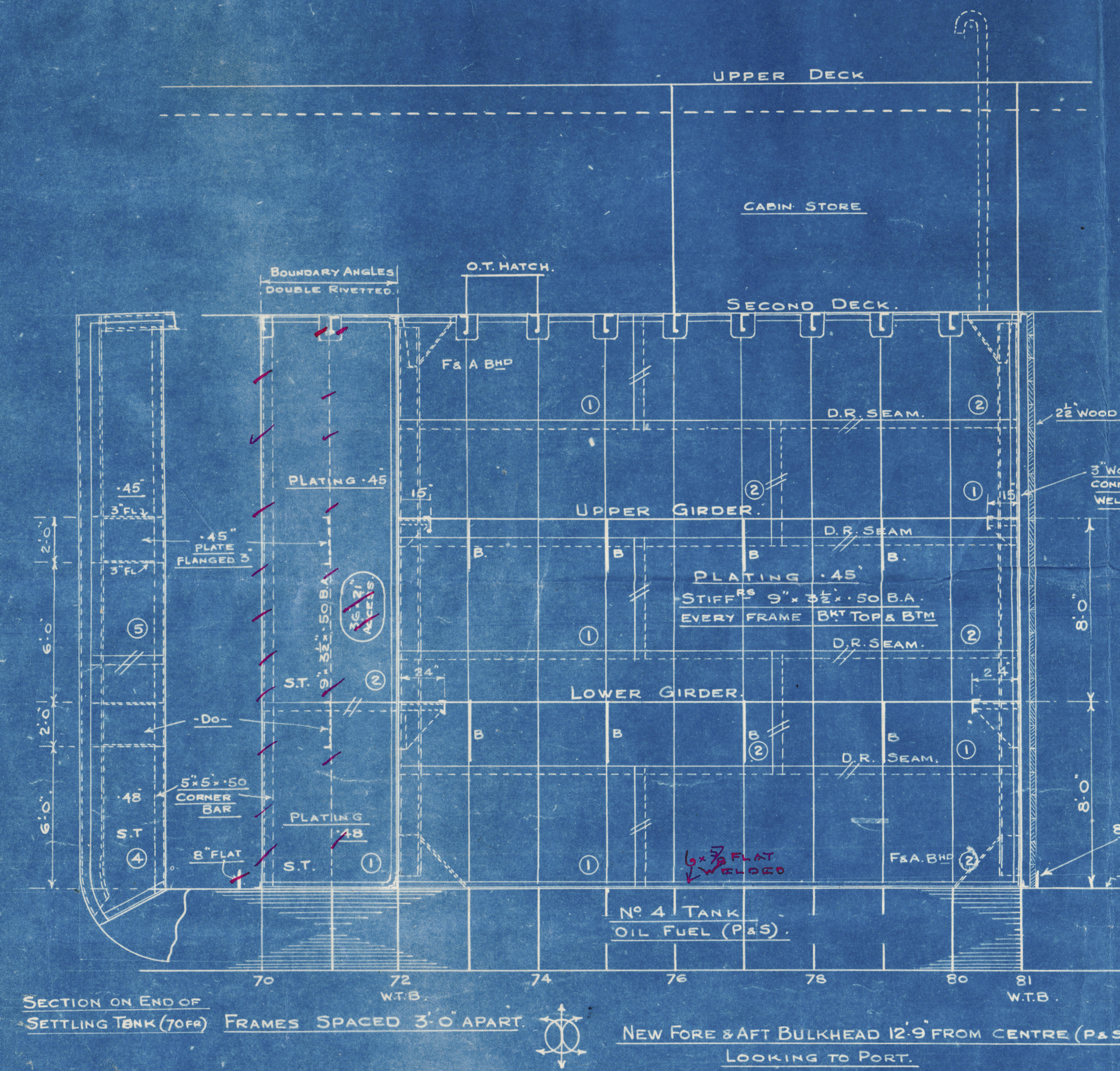


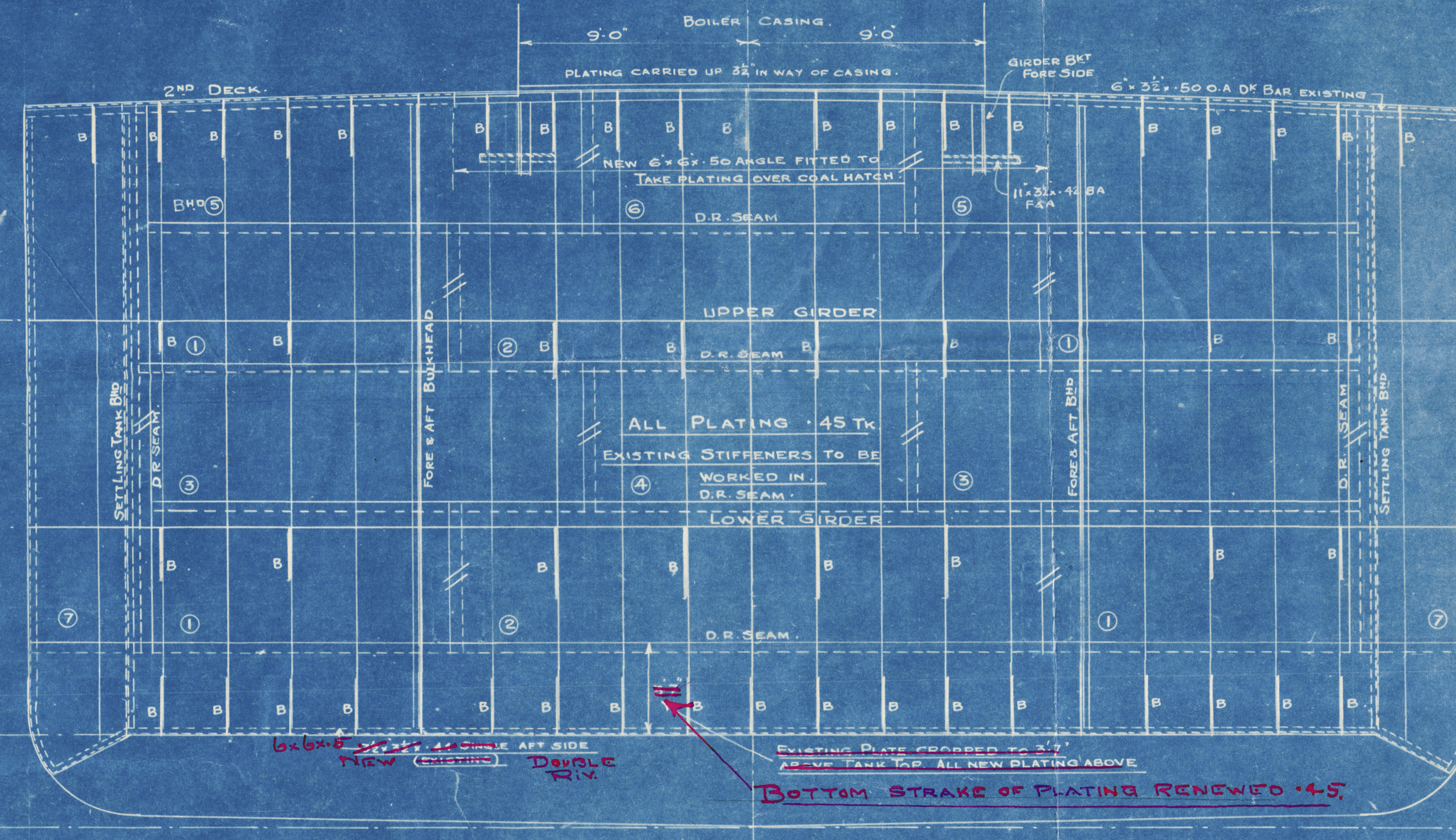
5/5 "EMPIRE KUMASI."

CONVERSION OF CROSS BUNKER FOR OIL FUEL.

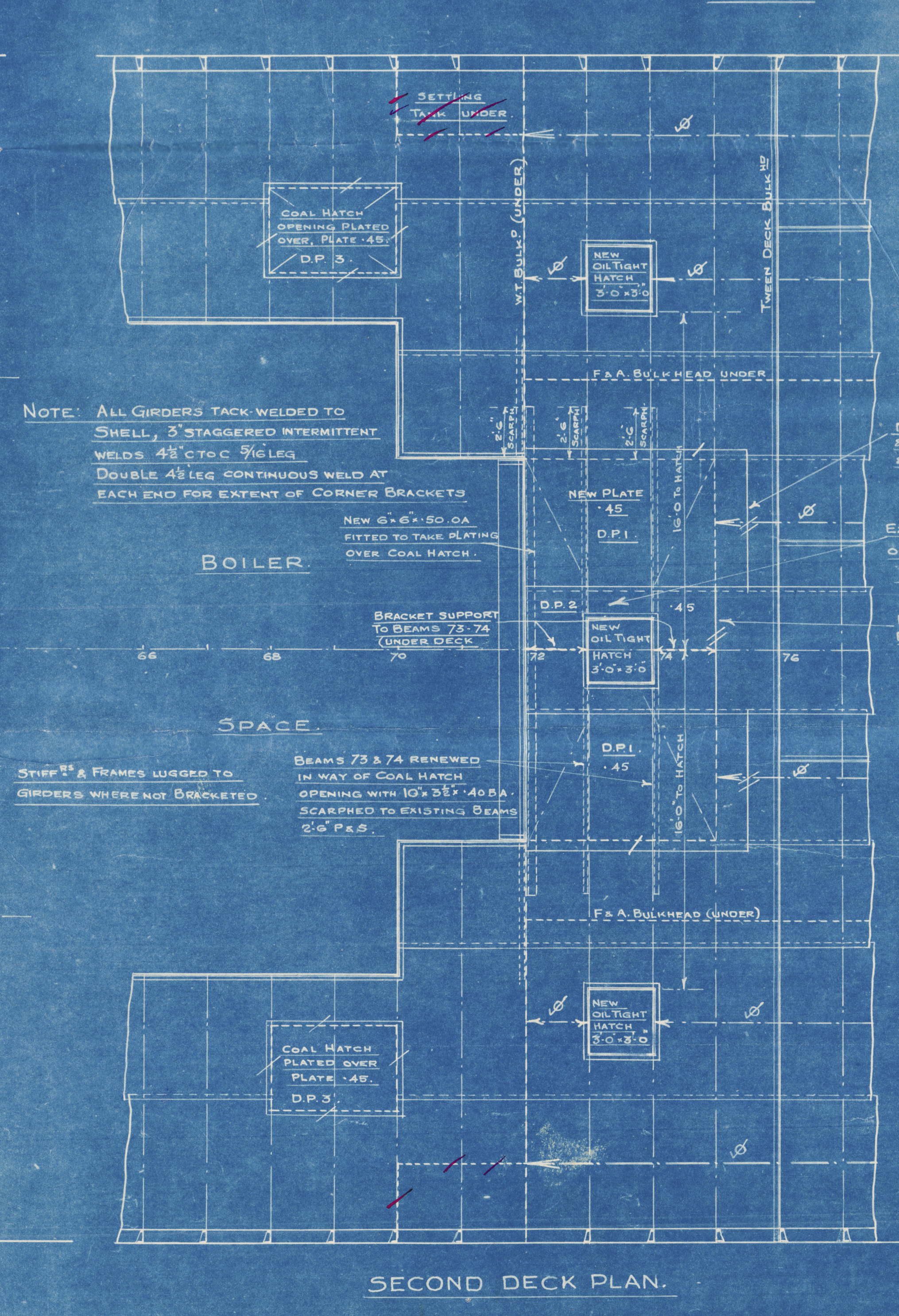
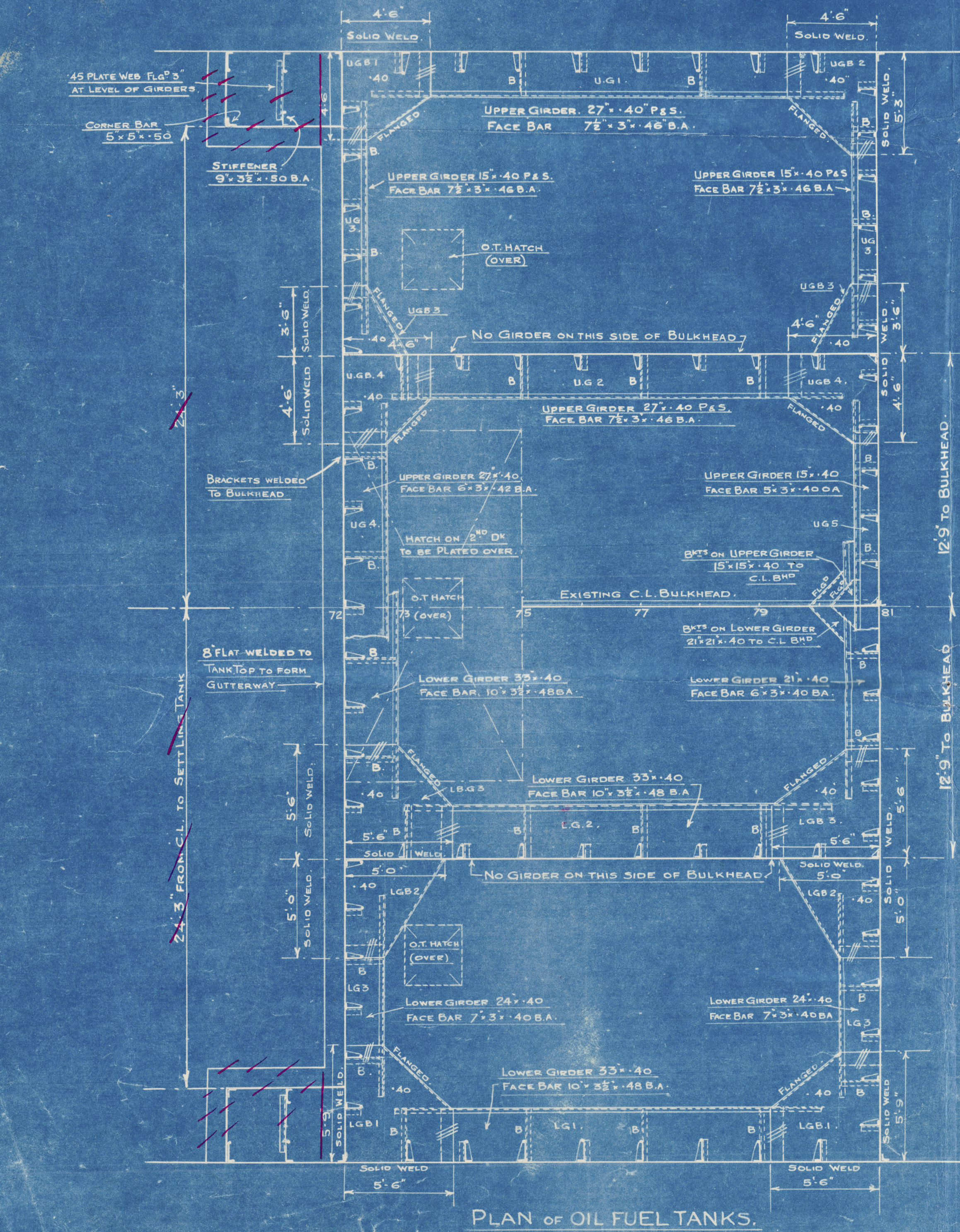
SCALE 1/4" = 1 FOOT.



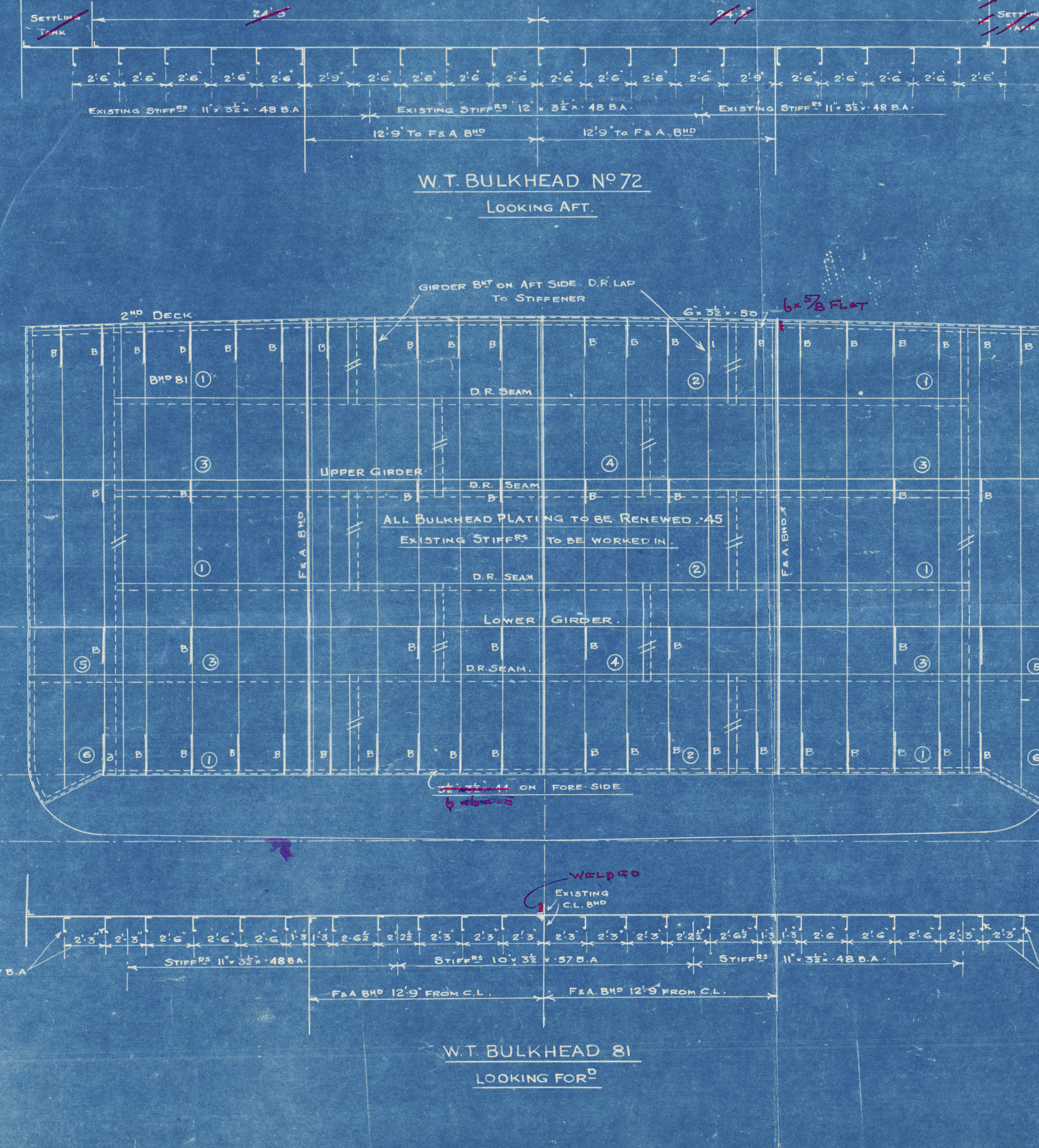
NOTE:
ALL SINGLE RIVET BOUNDARY ANGLES TO HAVE BOTH TOES WELDED, AND 3/8" BUTTS OF PLATING BELOW LEVEL OF UPPER GIRDER TO BE REINFORCED BY A LIGHT RUN OF CONTINUOUS WELDING. CARE TO BE TAKEN TO ENSURE THAT THE RIVETING IS NOT AFFECTED BY THE WELDING.



6" x 6" x 5/8" FRAME 12' 9" LONG ON AFT SIDE DOUBLE RIVETED



NOTE: ALL GIRDERS TACK-WELDED TO SHELL, 3" STAGGERED INTERMITTENT WELDS 4 1/2" C.T.C. 7/16" LEG. DOUBLE 4 1/2" LEG CONTINUOUS WELD AT EACH END FOR EXTENT OF CORNER BRACKETS.



6" x 6" x 5/8" FRAME 12' 9" LONG ON AFT SIDE DOUBLE RIVETED

THE TYNE DOCK ENGINEERING CO. LTD.
THIRIST STREET,
SOUTH SHIELDS.
MARCH 1947.

" IXIA "

OIL FUEL TANKS
(AS FITTED.)

005788-005799-6146



© 2020

Lloyd's Register
Foundation