

Nº 123.

PROMENADE DECK PLATING

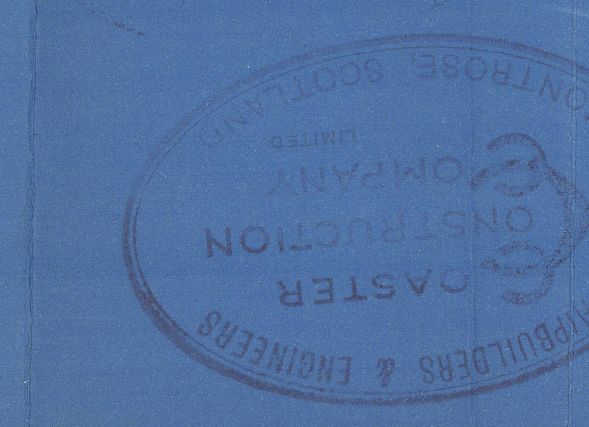
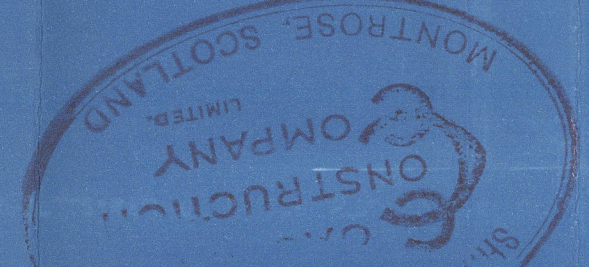
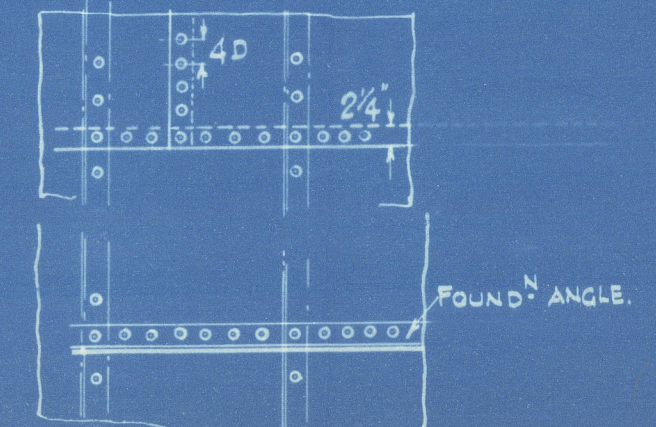
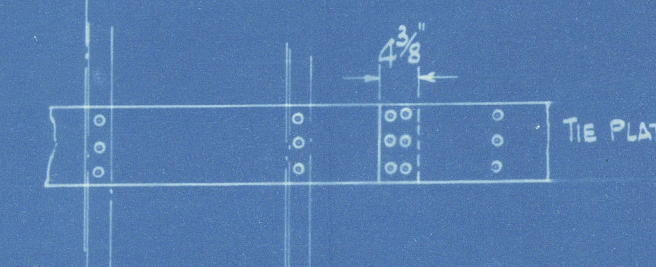
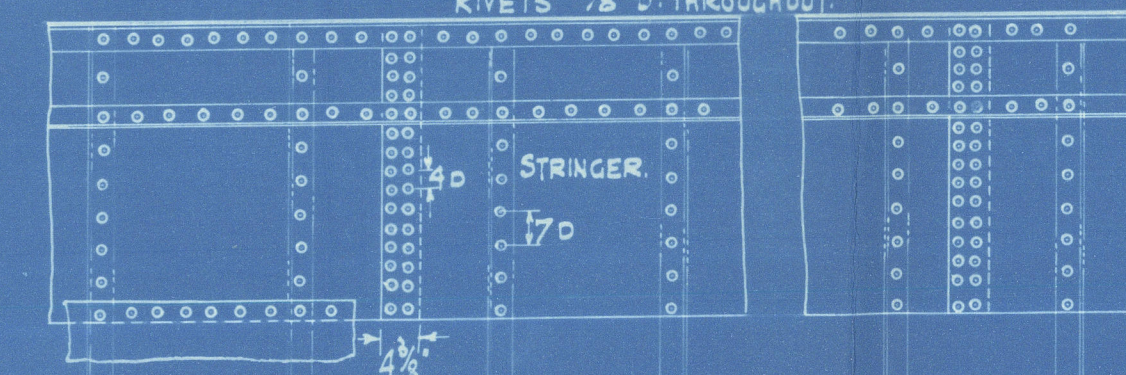
SCALES 1/4" = 1'-0"

NOTES:-

STRINGER PLATE THROUGHOUT 1/2" THICK.
 " " " " 3" x 3" x 28" L
 " " " " 2 1/2" x 2 1/2" x 25 L
 GUTTER " " 5" x 3" x 30" L UNLESS OTHERWISE SHOWN.
 FOUNDATION ANGLES 3/8" THICK, WHERE MORE THAN 24" WIDE.
 PLATING 9" x 25" EXCEPT NO. 12 WHICH IS 12" x 25"
 CORNERS OF HOUSES 6" RAD.
 PORT SIDE SHOWN, STARBOARD GENERALLY SIMILAR
 EXCEPT WHERE SHOWN OTHERWISE.
 BEAMS 42 TO 51 INCL. CUT WHERE MARKED THUS & SINGLE PLATE
 STRAP FITTED, 4 RIVETS EACH SIDE. INBOARD PART LEFT.
 LOOSE TILL BOILERS ARE SHIPPED.
 DECK PLATING NOT TO BE CAULKED
 BEAMS TO BE PUNCHED FOR JOINERS GROUNDS AS FOLLOWS:-
 3 TO 11 INSIDE DANCING HALL
 12 TO 24 FULL BREADTH.
 25 TO 38 FROM 4' 6" CASING TO SHIPS SIDE P.S.
 39 TO 40 " " " BATHROOM BND P.S.
 42 TO 60 FROM 4' 6" CASING TO SHIPS SIDE P.S.
 61 TO 70 FULL WIDTH.
 71 TO 75 OUT TO 3' 6" CASING P.S.
 HOLES 5/8" DIA. NOT MORE THAN 2' 0" APART

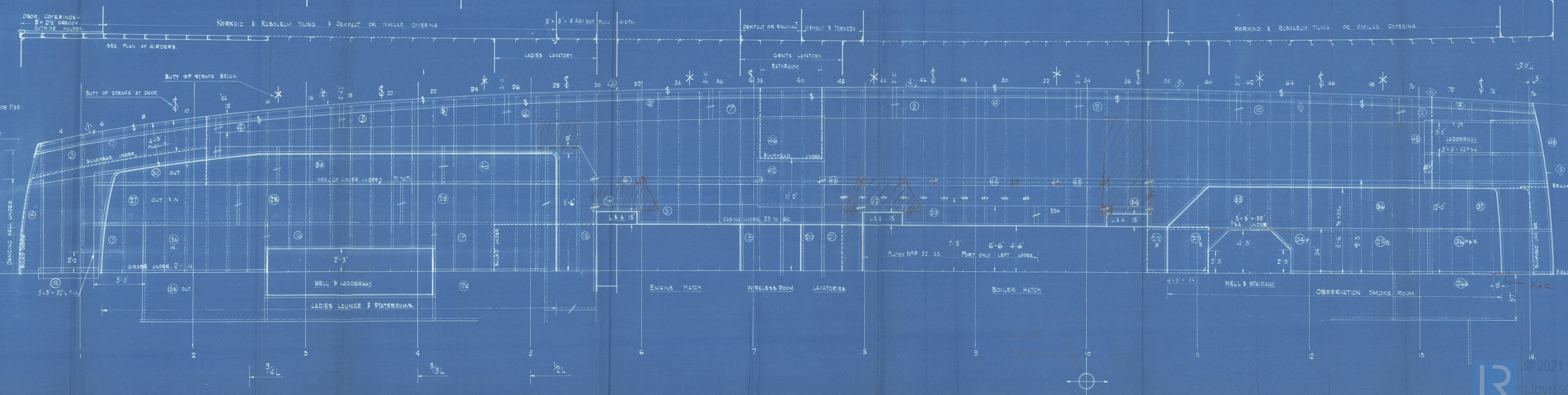
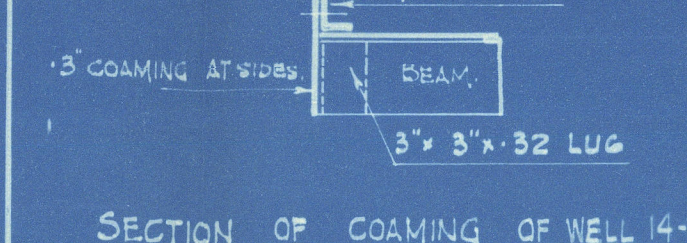
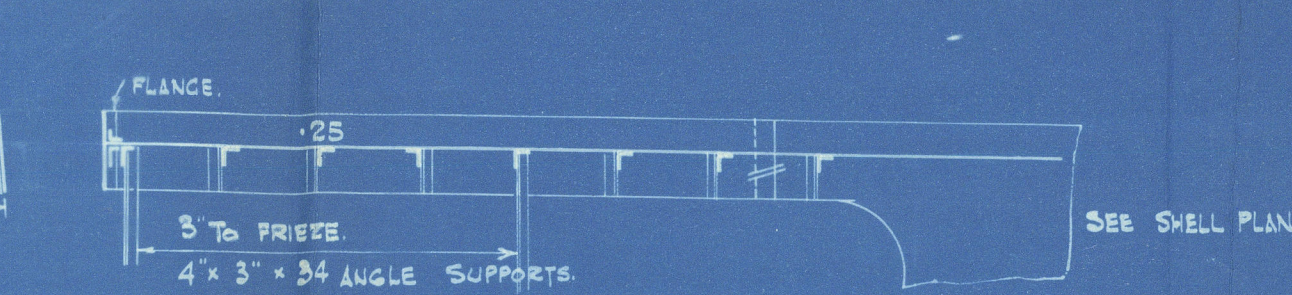
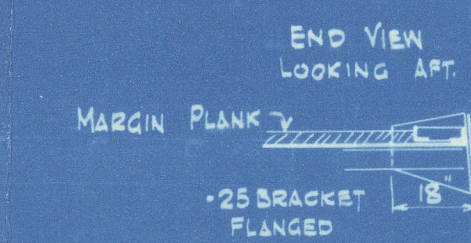
RIVETING

RIVETS 3/8" D. THROUGHOUT.



28 OCT 1924

28 OCT 1924



24 OCT 1924

Approved
 27-10-1924
 10-10-1924

62
20

Promenade Deck Plan.

Coaster Const^m Co. N^o 123.

27-10-24.

"Catala"



© 2021

Lloyd's Register
Foundation

003778-003787-0026

Coastal Const Co

123

Prom. dk. Plating

Bay

Coastal Const Co.

123.

Prom. dk. Plating

27.10.24

20.

003778-003787-0036



© 2021

Lloyd's Register
Foundation