

DWG. NO. 11199.

A.D. 2361.

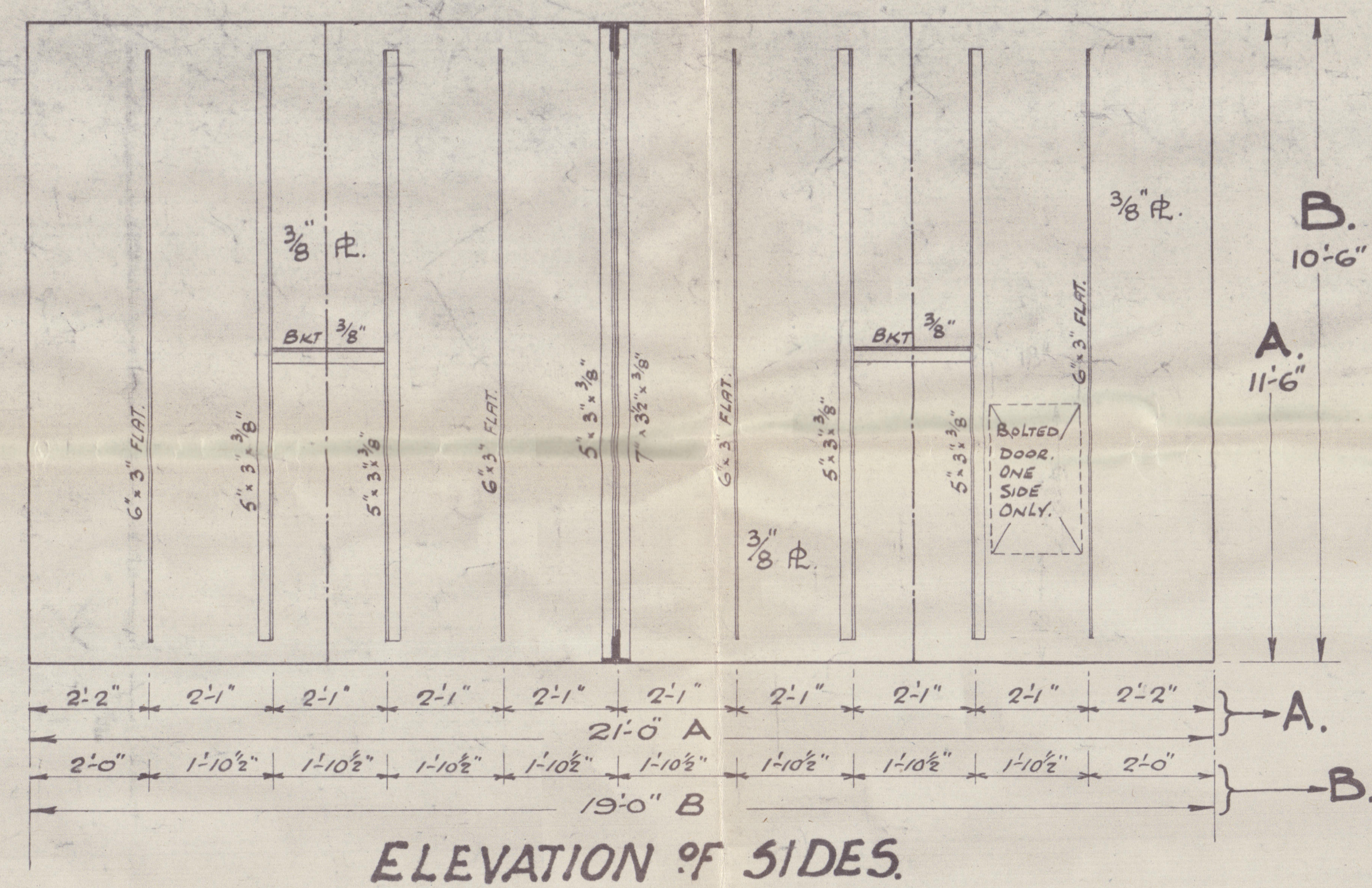
FRESH WATER TANKS.

TANKS "A" 21'-0" x 15'-0" x 11'-6". 6 OFF.

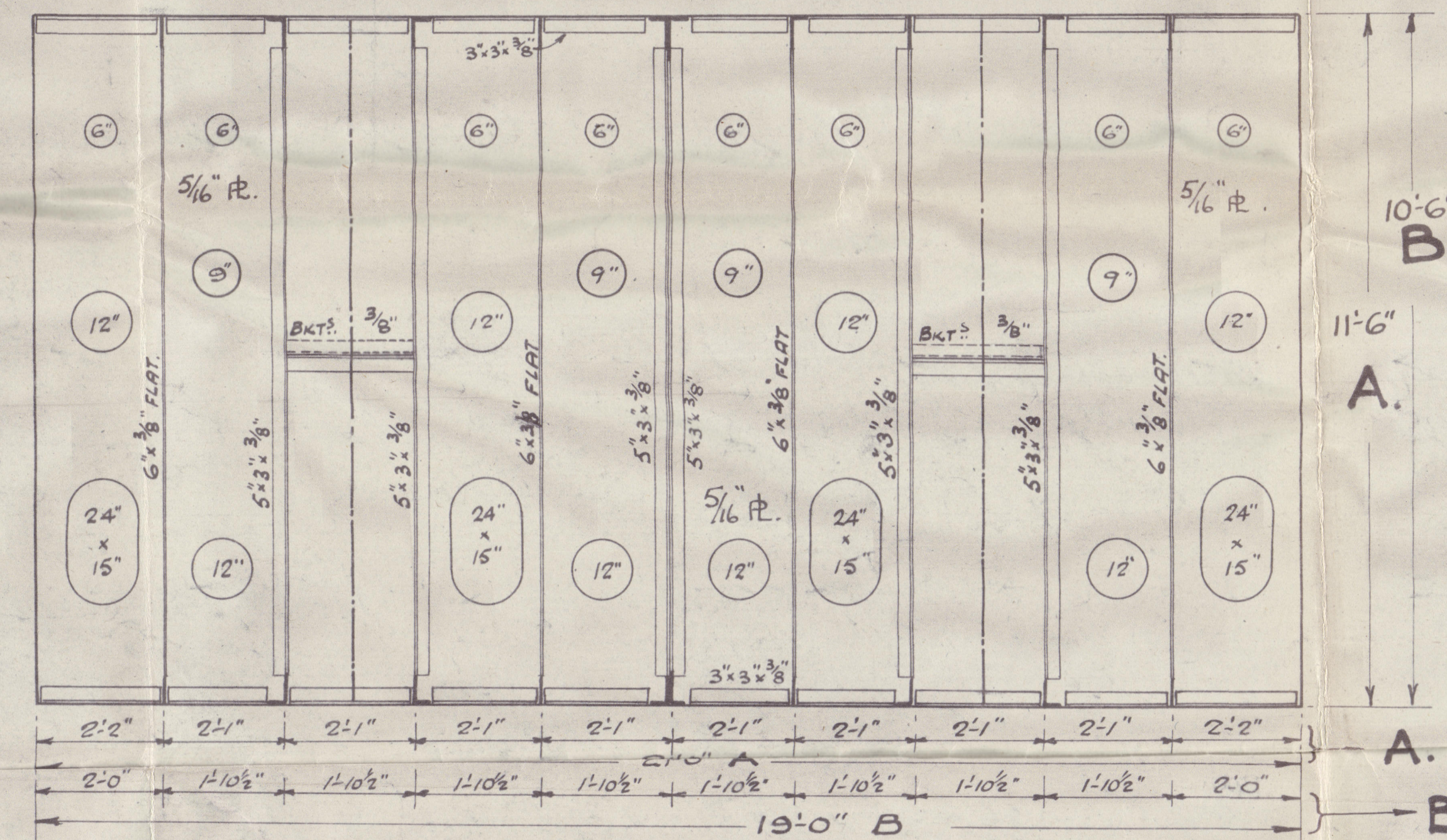
TANKS "B" 19'-0" x 15'-0" x 10'-6". 6 OFF.

SCALES: $\frac{1}{2}$ " & 1" = 1 FOOT.

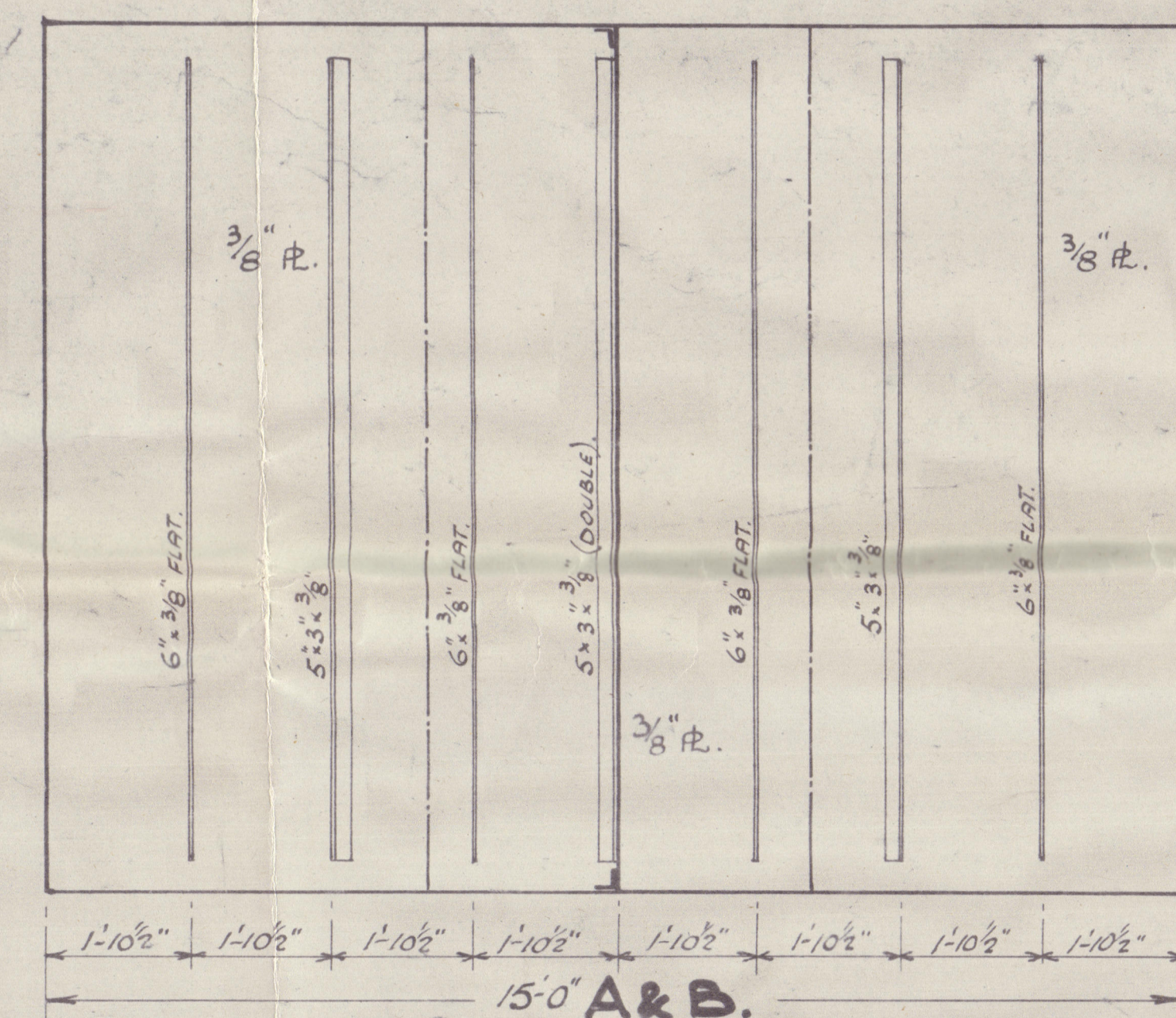
WELDED CONSTRUCTION THROUGHOUT.
(EXCEPT THROUGH SHELL JOINT)



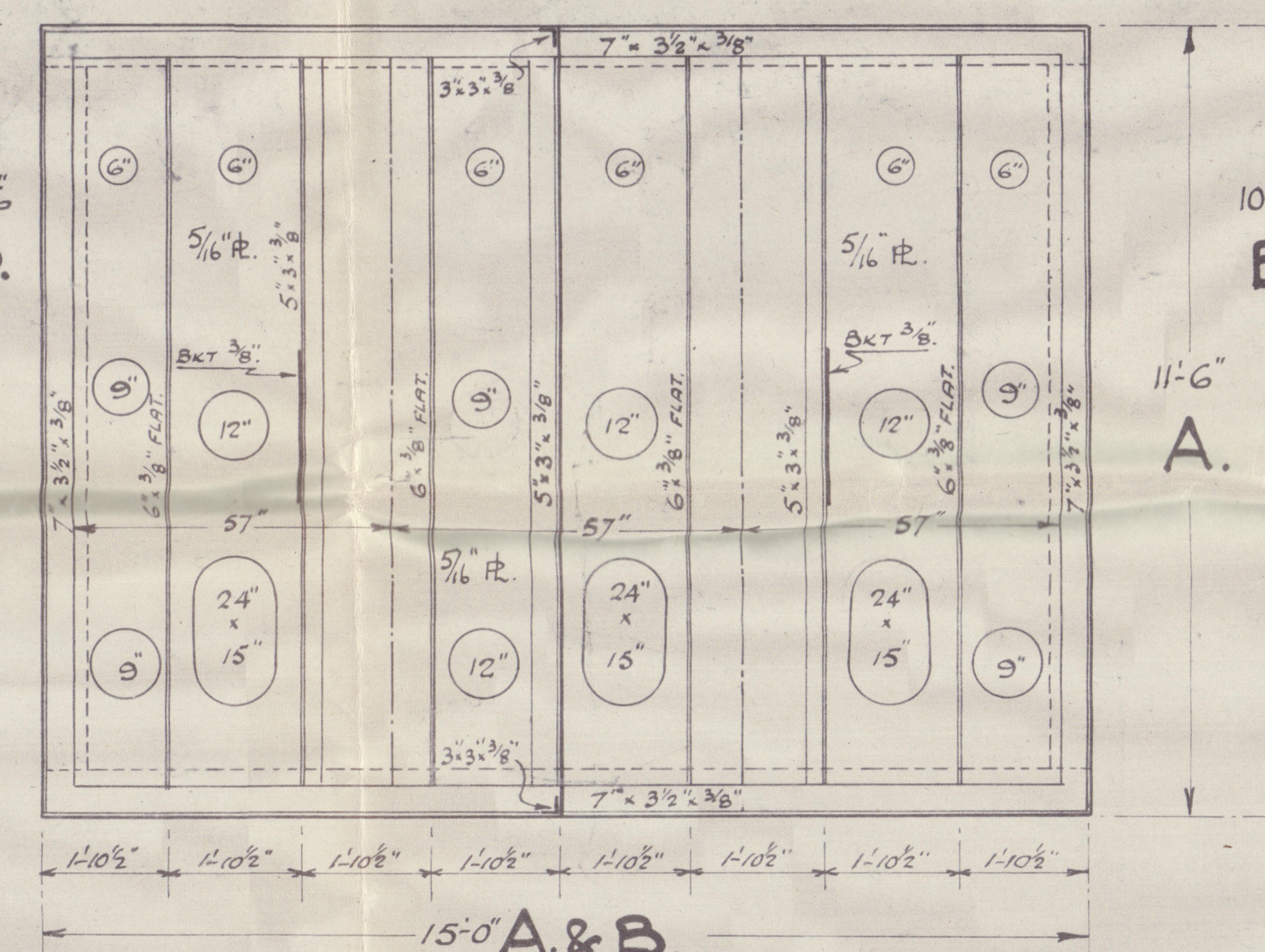
PLAN OF BOTTOM: TOP SIMILAR
EXCEPT PLATING REDUCED TO $\frac{5}{16}$ ".



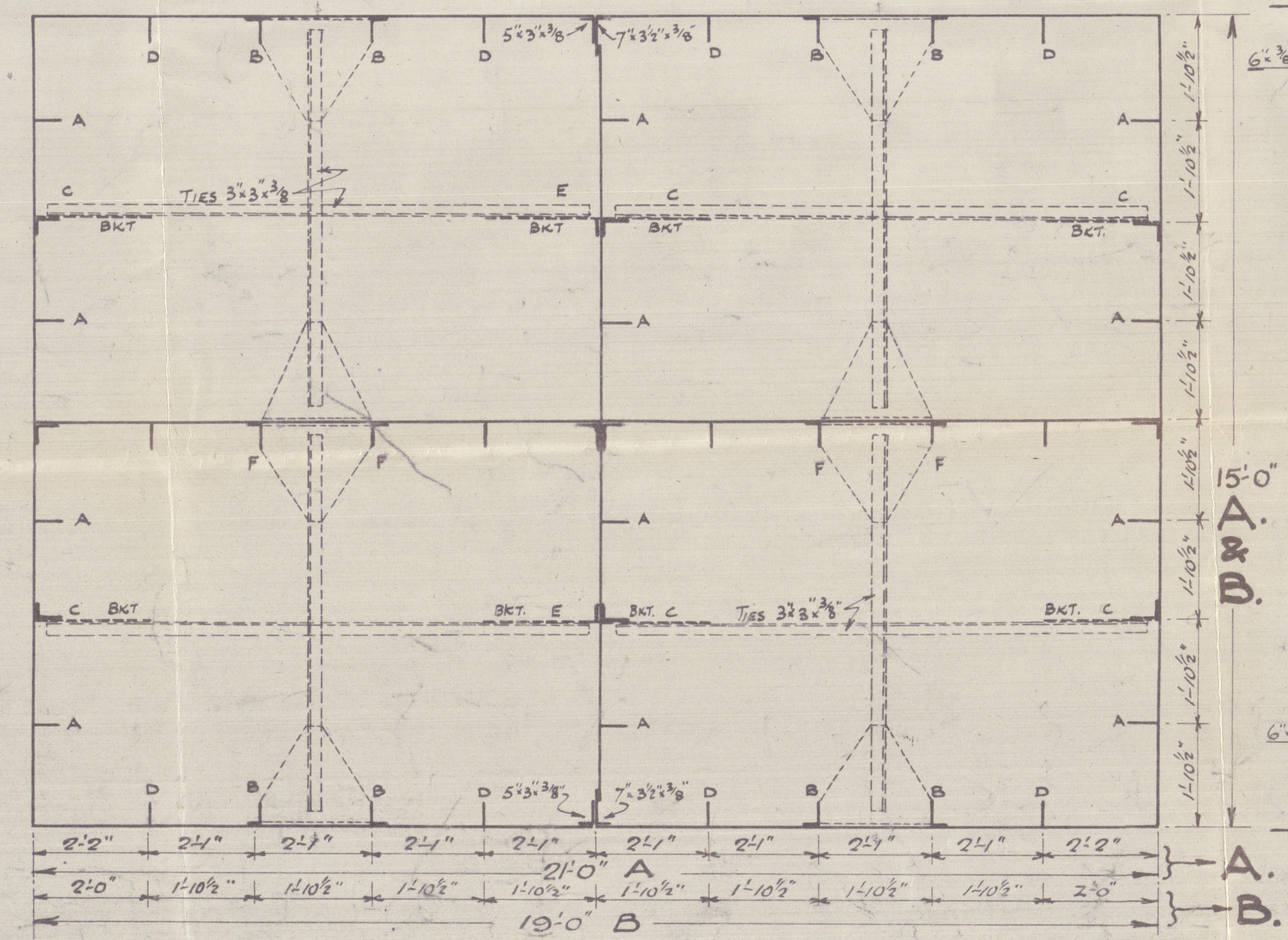
ELEVATION OF
LONGITUDINAL
WASH PLATE.



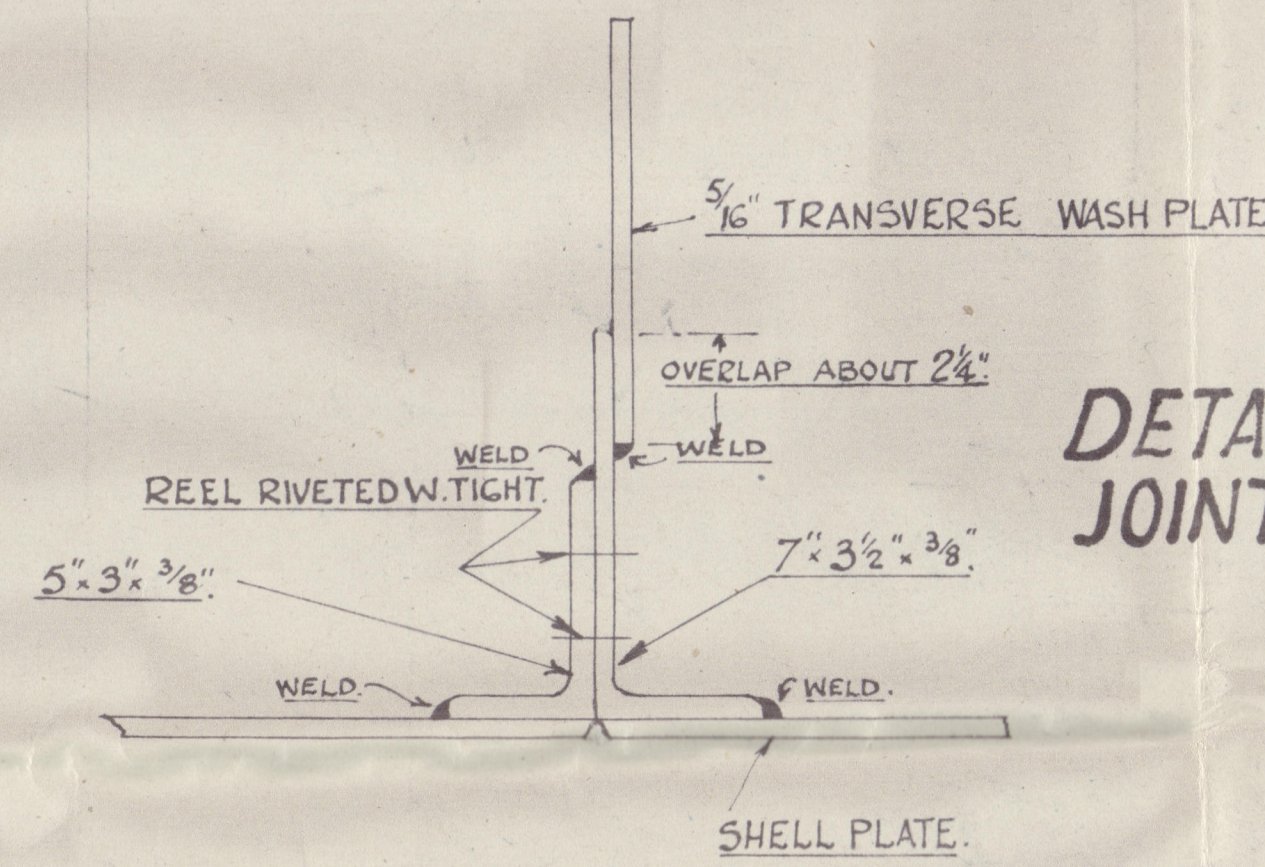
ELEVATION OF ENDS.



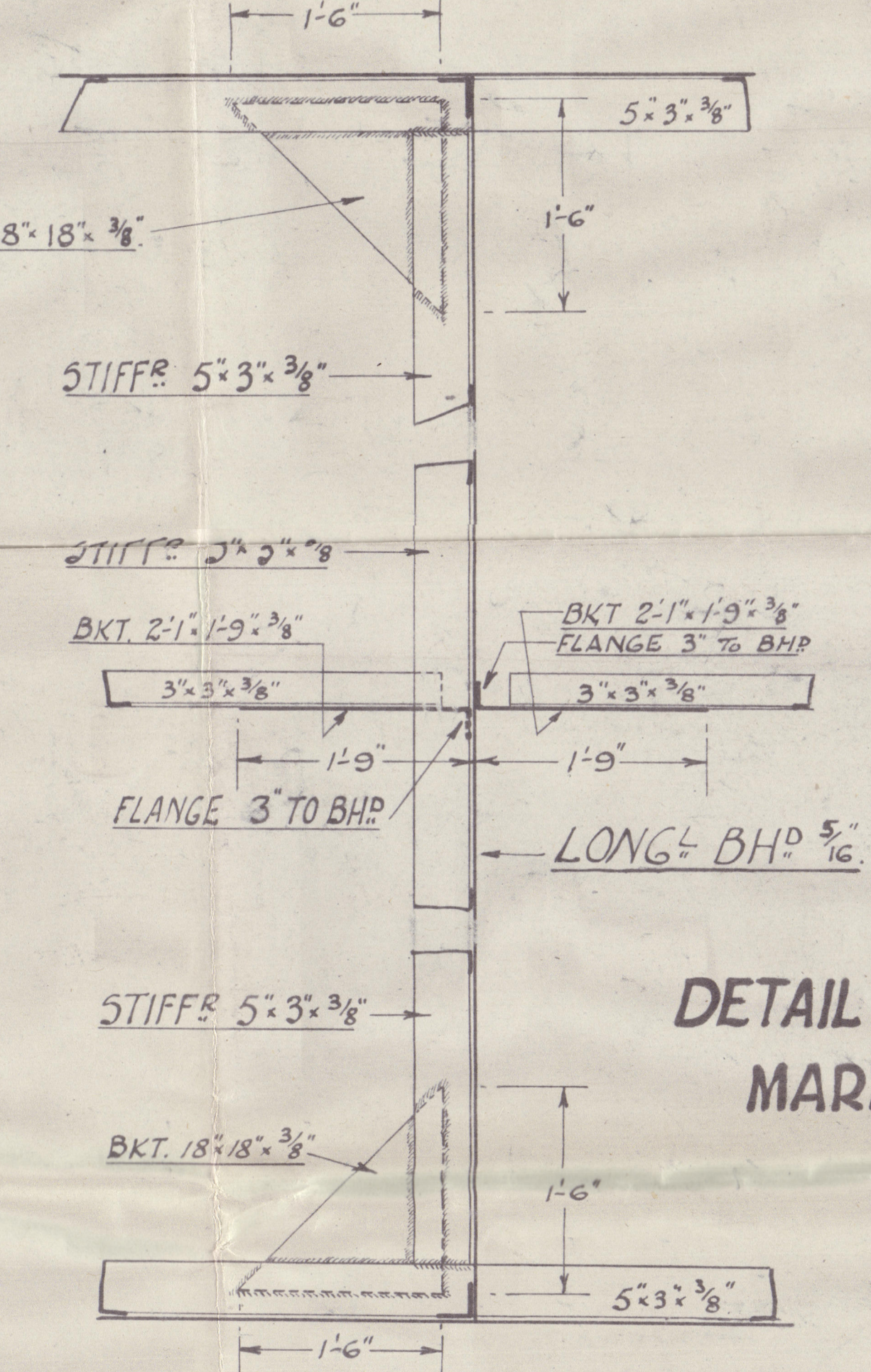
ELEVATION OF TRANSVERSE WASH PLATE.



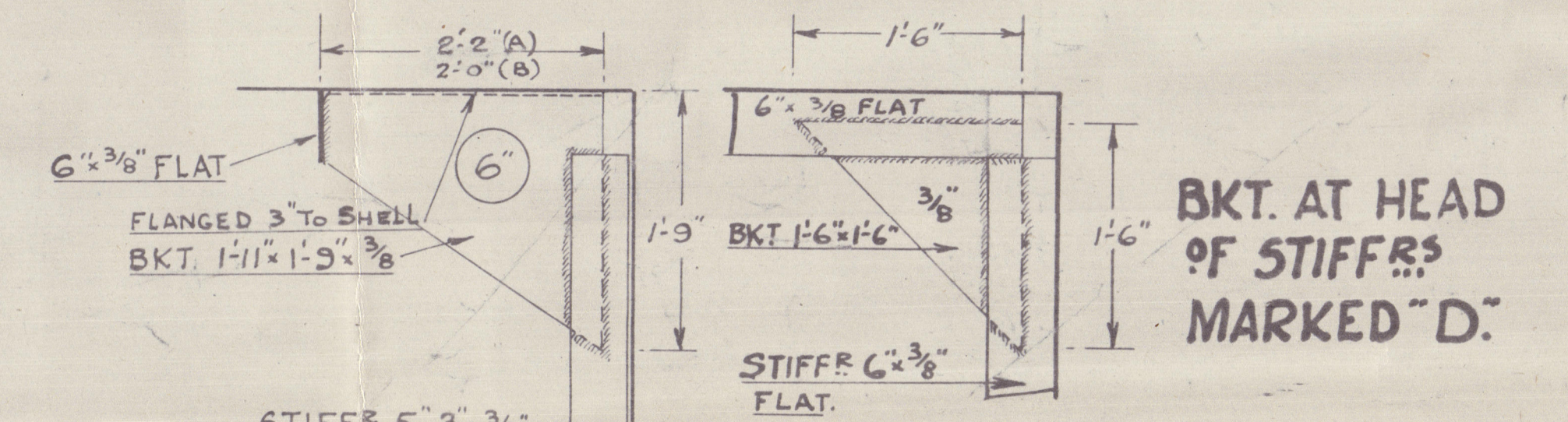
SECTION THRO' TANK.



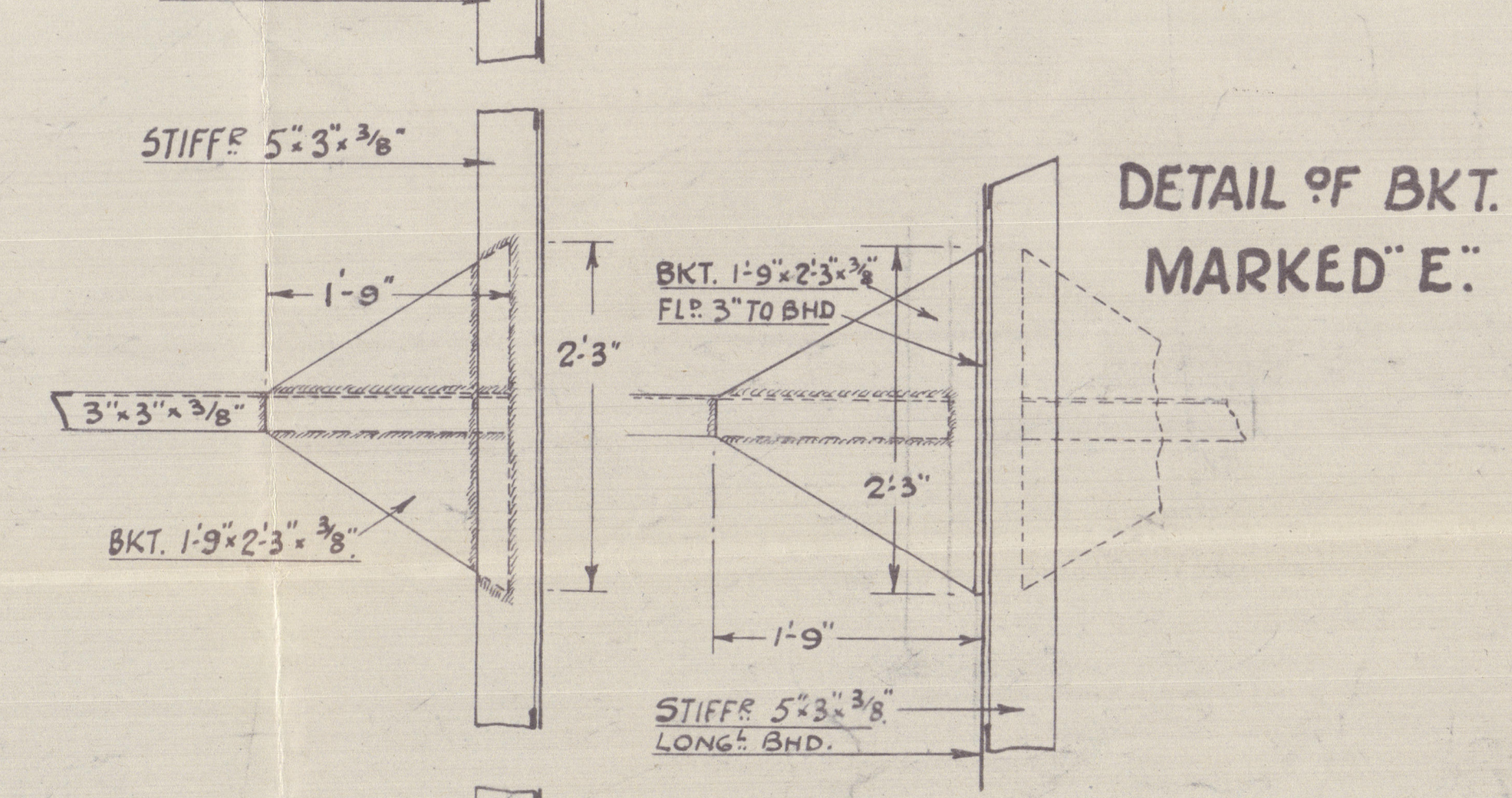
DETAIL OF TANK
JOINT. (SCALE 3" = 1'-0").



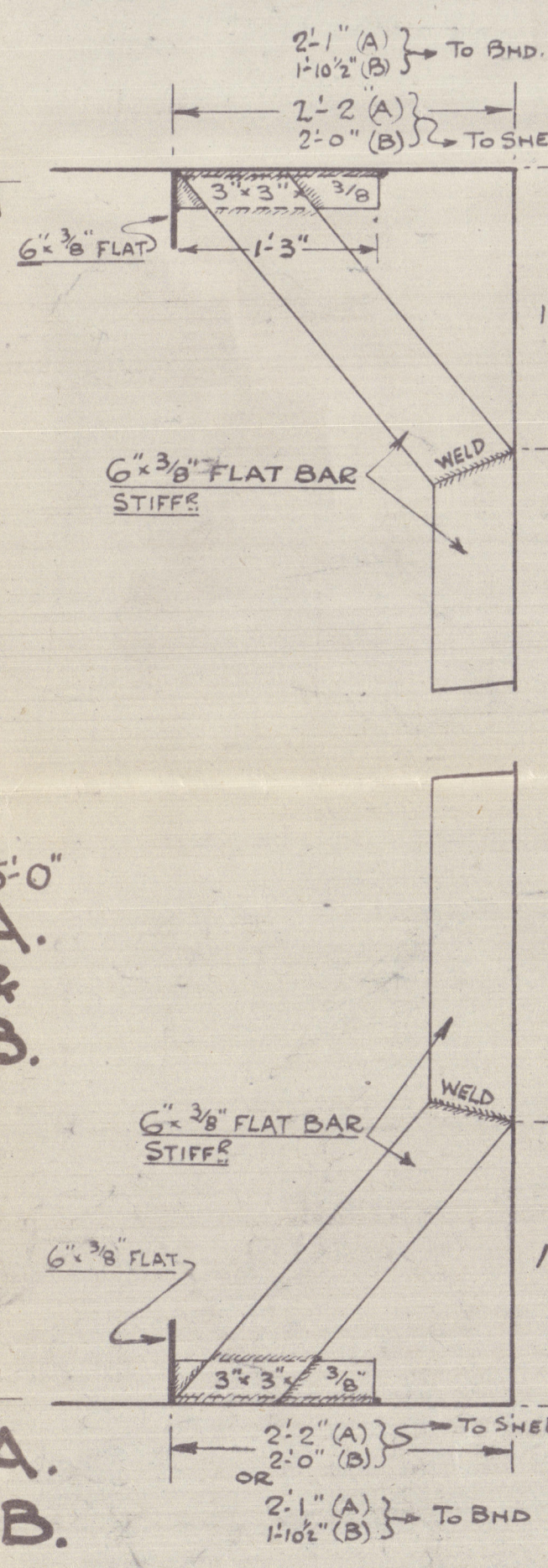
DETAIL OF STIFFER
MARKED "F."



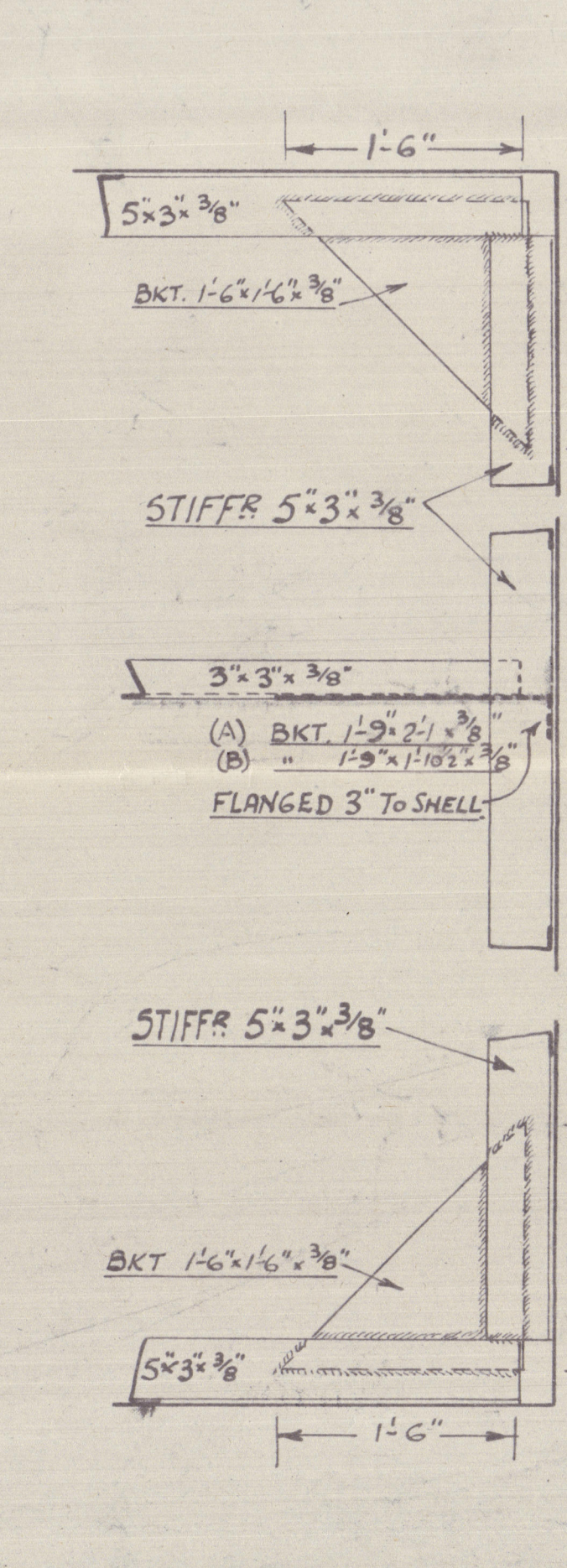
BKT. AT HEAD
OF STIFFERS
MARKED "D."



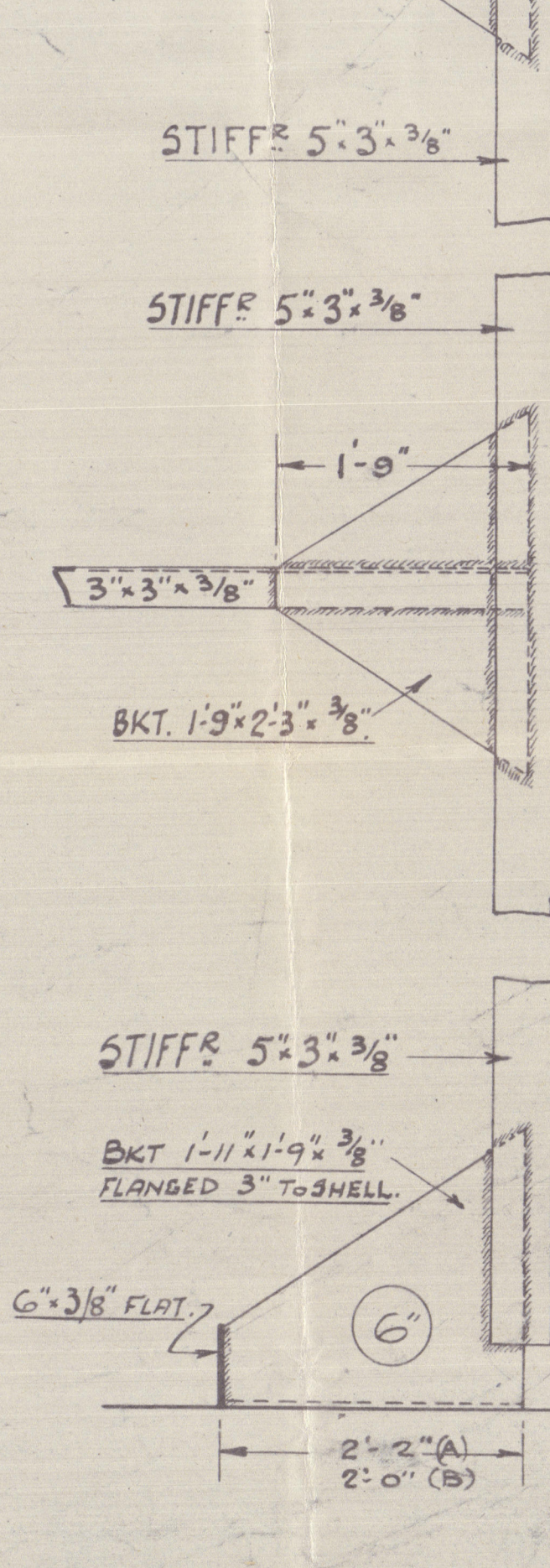
DETAIL OF BKT.
MARKED "E."



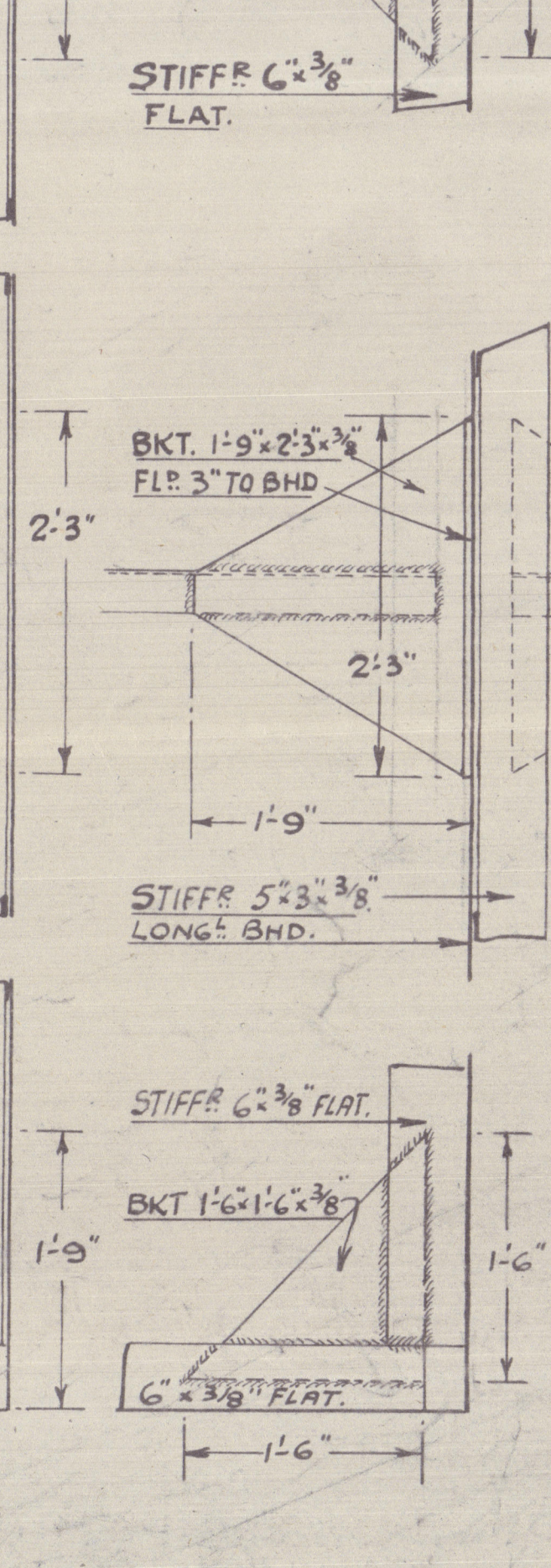
DETAIL OF STIFFERS
MARKED "A."



DETAIL OF STIFFERS
MARKED "B."



DETAIL OF STIFFERS
MARKED "C."



DETAIL OF STIFFERS
MARKED "D."

11199.

M/V "CHESHIRE"

RPT. No. 111 967. *Jan.*

003769-005777-0002



© 2020

Lloyd's Register
Foundation