

# Lloyd's Register of Shipping.

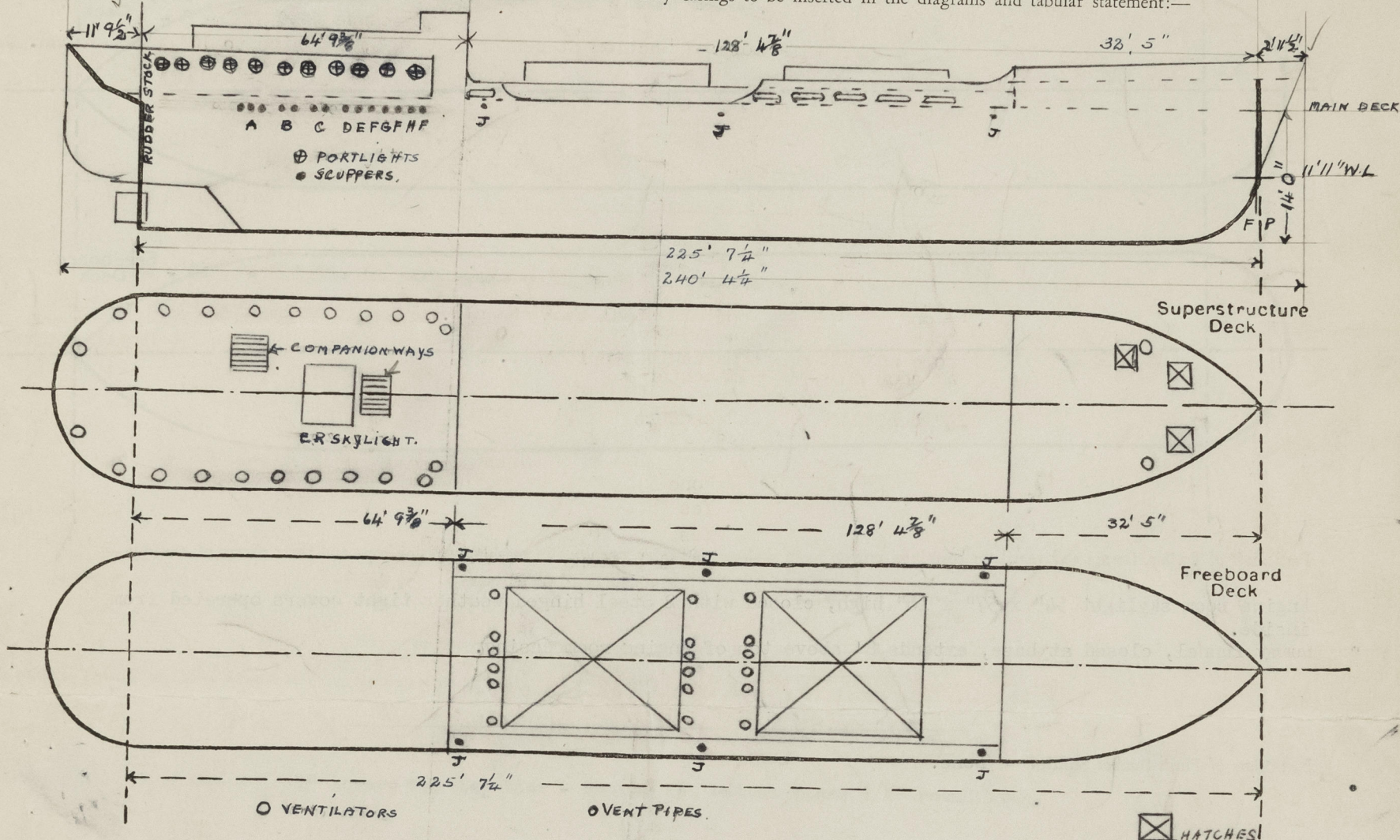
## SURVEYS FOR FREEBOARD.

(CONDITIONS OF ASSIGNMENT.)

Index No. ....  
(For London Office only.)

Ship's Name M. V. "RIO ESCONDIDO" (BC) Port of Survey NEW ORLEANS, LOUISIANA.  
 Official Number - Surveyor's Signature J. A. Laing  
 Nationality and Port of Registry Nicaraguan Date of Survey 10 December, 1952

Disposition and dimensions of superstructures, trunks, deckhouses and machinery casings to be inserted in the diagrams and tabular statement:—



Particulars of Superstructures, Trunks, Casings, Deckhouses.

	Coaming	Plating	Stiffeners	Spacing	End Attachments of Stiffeners	Size of Openings	Height of Sills	Height of Casings
Poop Bulkhead ...	5/16"	5/16"	3/8"x3"x4"	2' C to C	Top 5/16"x18"x21" Bottom 5/16"x13"x13"	5-12" Portlights 5-8" Portlights	—	—
Raised Quarter Deck Bulkhead ...	—	—	—	—	—	—	—	—
Bridge, After Bulkhead ...	—	—	—	—	—	—	—	—
Bridge, Forward Bulkhead ...	—	—	—	—	5/16"x18"x21" E Top 5/16"x13"x13" E Bottom	2 WT Doors 27"x54"	15"	63"
Forecastle Bulkhead ...	3/8"H	3/8"H	5/16"x2 5/8"x4"	24"	13" E Bottom	—	—	—
Trunk, Aft ...	—	—	—	—	—	—	—	—
Trunk, Forward ...	—	—	—	—	—	—	—	—
Exposed Machinery Casings on Freeboard or Raised Quarter Decks ...	—	—	—	—	—	—	—	—
Exposed Machinery Casings on Superstructure Decks ...	—	5/16"	—	—	—	2- 22" x 50" Eng. Rm. Skylight covers	—	—
Machinery Casings within Superstructures not fitted with Class I Closing Appliances ...	—	—	—	—	—	—	—	—
Deckhouses on Flush Deck Ships ...	—	—	—	—	—	—	—	—

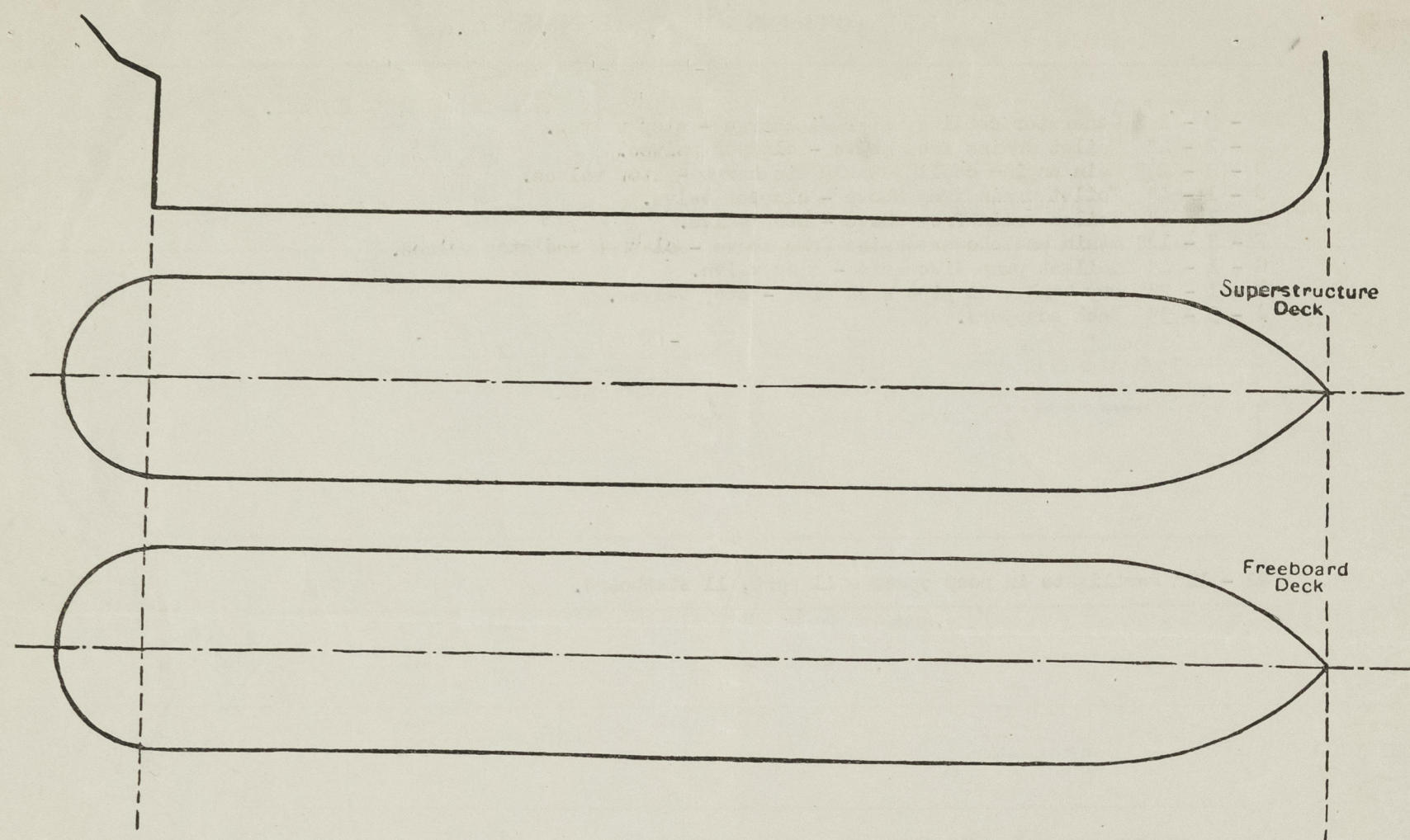
Particulars of Closing Appliances (state if capable of being manipulated from both sides).

Poop Bulkhead ...	5-12" and 5-8" Portlights, operate from inside. X
Raised Quarter Deck Bulkhead ...	—
Bridge, After Bulkhead ...	—
Bridge, Forward Bulkhead ...	—
Forecastle Bulkhead ...	2 Steel WT doors, 27" x 54", operated from both sides. X
Exposed Machinery Casings on Freeboard or Raised Quarter Decks ...	—
Exposed Machinery Casings on Superstructure Decks ...	—
Machinery Casings within Superstructures not fitted with Class I Closing Appliances ...	Engine Room skylight. 2 Openings 22" x 50" with hinged weather tight steel covers, operated from inside.
Deckhouses on Flush Deck Ships ...	—



# PARTICULARS OF PROTECTION TO OPENINGS, ETC.

The following diagrams should be used to indicate the positions of cargo and coaling hatchways, gangway, cargo and coaling ports, ventilators, companionways, etc., which would affect the seaworthiness of the ship:—



Particulars of fiddle, funnel and ventilator coamings, engine room skylight and other openings in machinery casing tops and their means of closing:—

Engine room skylight 54" x 57" x 16" high, closed with 2 Steel hinged weather tight covers operated from inside.

Dummy funnel, closed at base, extends 8' above top of engine room casing.

Particulars of Flush Bunker Scuttles:— None.

Particulars of Companionways:—

2 Companionway ladders with openings through superstructure deck to freeboard deck below.  
*inside Poop deck house*

Particulars of Ventilators in exposed positions on freeboard and superstructure destructure decks:—

22 - 4" Air vents on poop deck 26" high, with modified Liverpool heads, to quarters below.

Particulars of Air Pipes in exposed positions on freeboard, raised quarter, or supersks:—

20 - 4" Air vents on hatch trunk, 16" high, with gooseneck heads.

3 - 4" Air vents on forecastle deck, 30" high, with gooseneck heads.

*All vents provided with wood plugs attached to the pipes by chains*

Particulars of Gangway Cargo and Coaling Ports:— None.

Particulars of Scuppers and Sanitary Discharge Pipes:—

- A - 3 - 1 1/4" Generator cooling water discharge - stop valves.
- E - 2 - 4" Toilet drains from above - clapper valves.
- C - 2 - 2 1/2" Main engine cooling water discharge - stop valves.
- D - 1 - 4" Toilet drain from above - clapper valve.
- E - 1 - 4" Toilet drain from above - stop valve.
- F - 3 - 1 1/2" Basin and shower drains from above - clapper and stop valves.
- G - 1 - 4" Ballast pump discharge - stop valve.
- H - 1 - 2" Dry tank vent pipe each side - stop valves.
- J - 3 - 3" Deck scuppers.

*Scuppers draining from Poop deck space fitted with additional automatic return valves or S.D. indicator*

Particulars of Side Scuttles:—

22 - 12" Portlights in poop space - 11 port, 11 starboard.  
*fitted with dead lights*

Vertical distance of Sill of lowest Side Scuttle above top of keel 19' 0"

Particulars of Guard Rails:— 1" square bar top tier - center and bottom tiers 3/4" round iron.

Particulars of Gangways, Lifelines, etc:— Removable pipe stanchions and chains on top of cargo hatch trunk, on each side.

Particulars of Freeing Arrangements.						
	Length of Bulwark	Height of Bulwark	Size of Freeing Ports	Number each side	Area each side	Rule area each side
After Well ... ..	---					
Forward Well ... ..	60' 0"	40"	5 - 6" x 6" 1 - 6" x 40"	5 1	15.0 sq ft approx. 1.67 sq ft approx.	12.5 sq ft
State position of each freeing port ... .. { After Well:— (F. and A. position and height above deck edge) { Forward Well:— 5 - Abreast No. 1 hatch on each side and 1 - Just forward of poop bulkhead, each side. Height above deck edge 3".						
State whether the freeing ports are fitted with shutters, bars, or rails, and give particulars of such:— Open.						
Additional area where sheer is less than standard.						
Note:— Approximately 68' of freeboard deck on port and starboard sides is closed only by 3 tier handrail.						



PARTICULARS OF PROTECTION TO OPENINGS, ETC.

HATCHWAYS ON FREEBOARD AND SUPERSTRUCTURE DECKS.											
Description of Hatchway			No. 1		No. 2						
Dimensions of Hatchway			21'-10"x40'-8"		21'-10"x44'-6"						
COAMINGS	Height above Deck	...	6'		6'						
	Thickness	Sides	...	1/2"	1/2"						
		Ends	...								
	Stiffeners	...	3/8"x3"x8 1/2"	3/8"x3"x8 1/2"							
	Brackets, Stays	...	T bar		T bar						
HATCH BEAMS	Number	...	5	7'0"	5	8'0"					
	Spacing	...									
	Scantling and Sketch	...									
	Bearing Surface	...									
FORE AND AFTERS	Number	...									
	Spacing	...									
	Unsupported Lengths	...									
	Scantling and Sketch	...	None		None						
	Bearing Surface	...									
HATCH COVERS	Material	...	Wood		Wood		Steel shod at ends.				
	Thickness	...	2 1/2"		2 1/2"						
	How fitted	...	Fore and aft on athwartship steel beams.								
	Bearing Surface	...	4" each end - 9 1/2" in center								
Spacing of Cleats			24" centers		24" centers						
Number of Tarpaulins			3		3						
*Are wood fore and afters steel shod at all bearing surfaces? None X											
Are battens and wedges efficient and in good condition? Yes X											
Are tarpaulins in good condition and in accordance with rule requirements? Yes X											
Are lashings provided in accordance with rule requirements? Steel battens											

Particulars of any special features:—

Endorsement at first survey and at surveys for renewal of Certificate:—

The fittings and appliances are in accordance with the particulars shown on this form (or as now modified) and are in good condition.

New Orleans, Louisiana

10 December, 1952

J. P. Laing  
Surveyor to Lloyd's Register



© 2020

Lloyd's Register  
Foundation