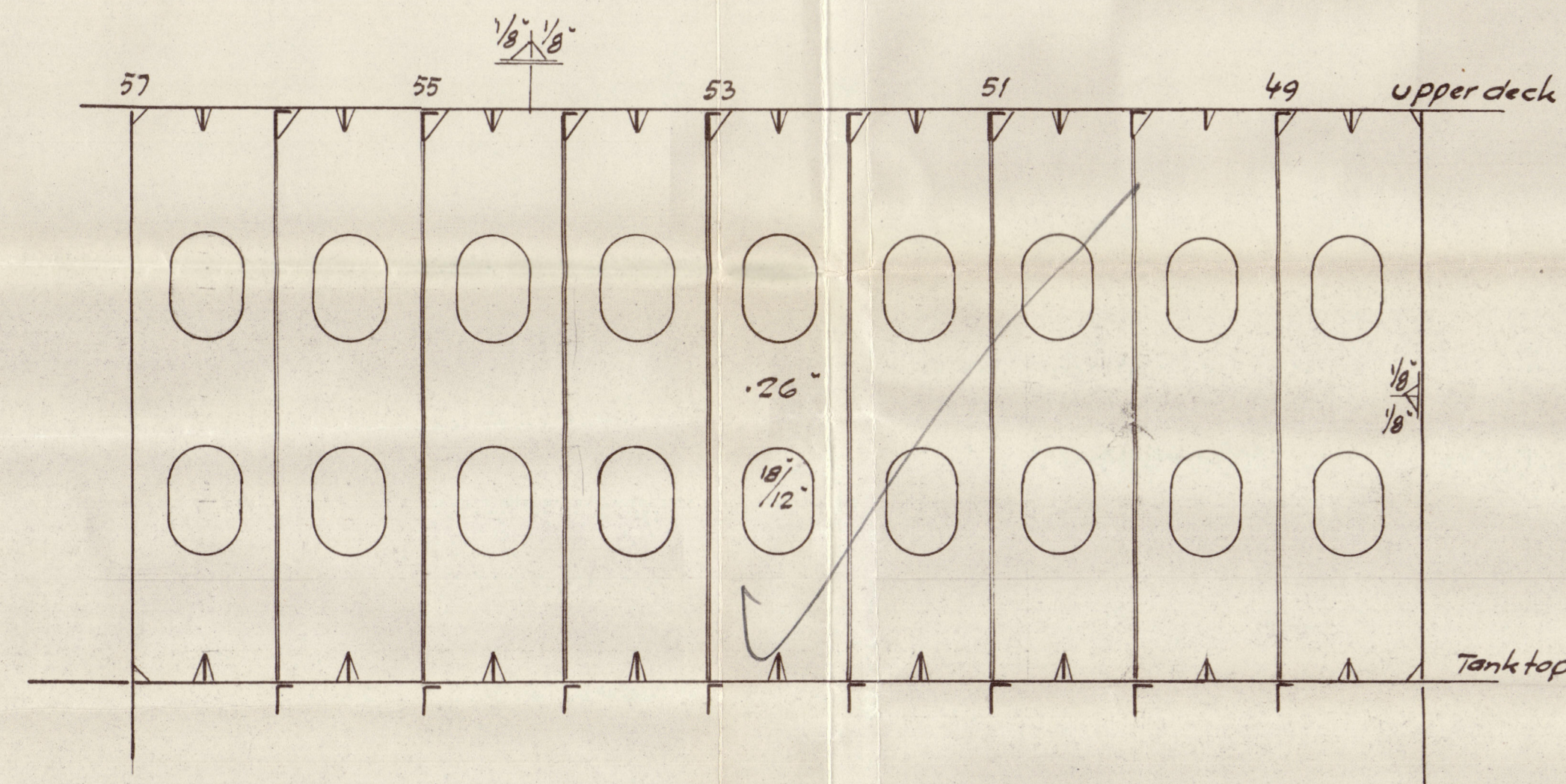
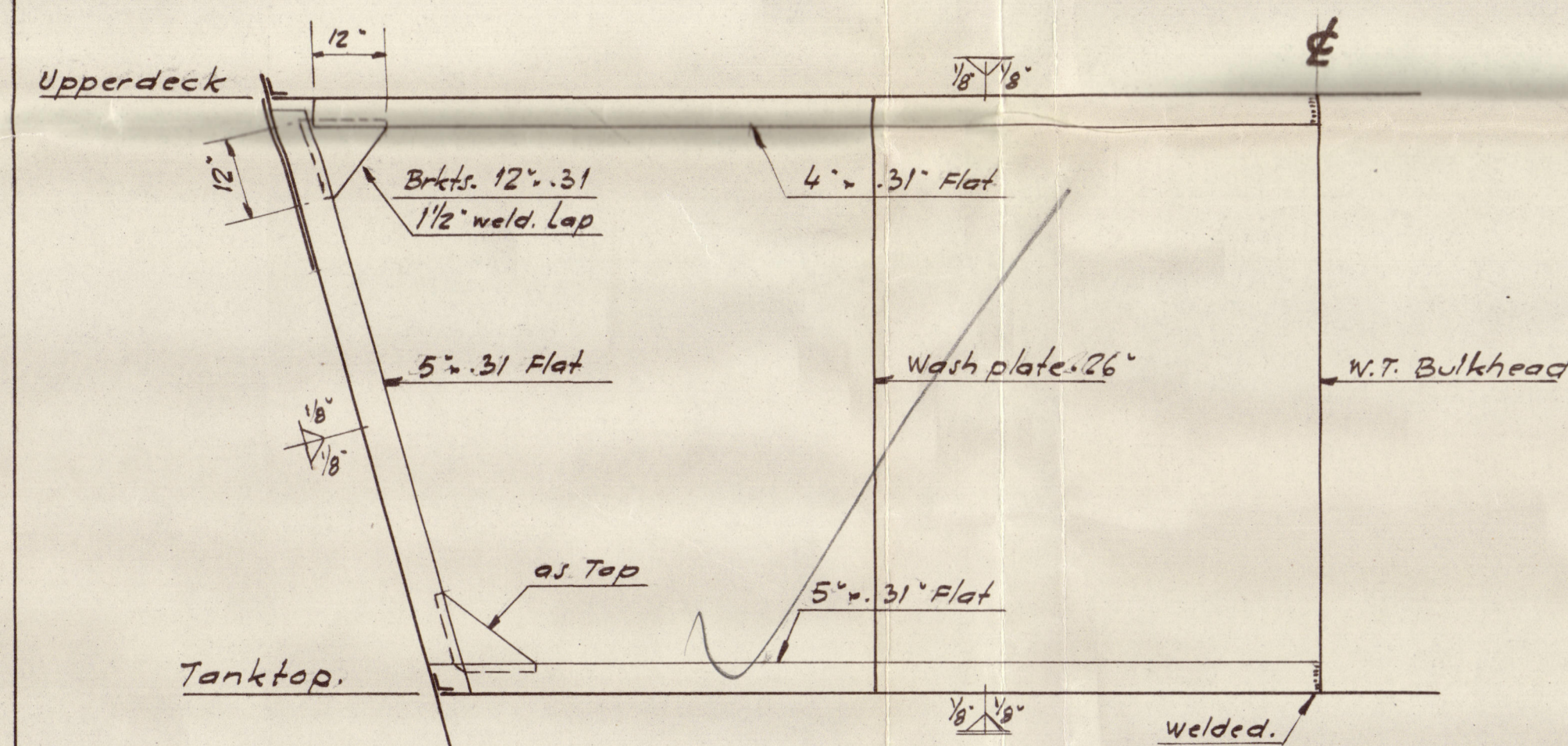


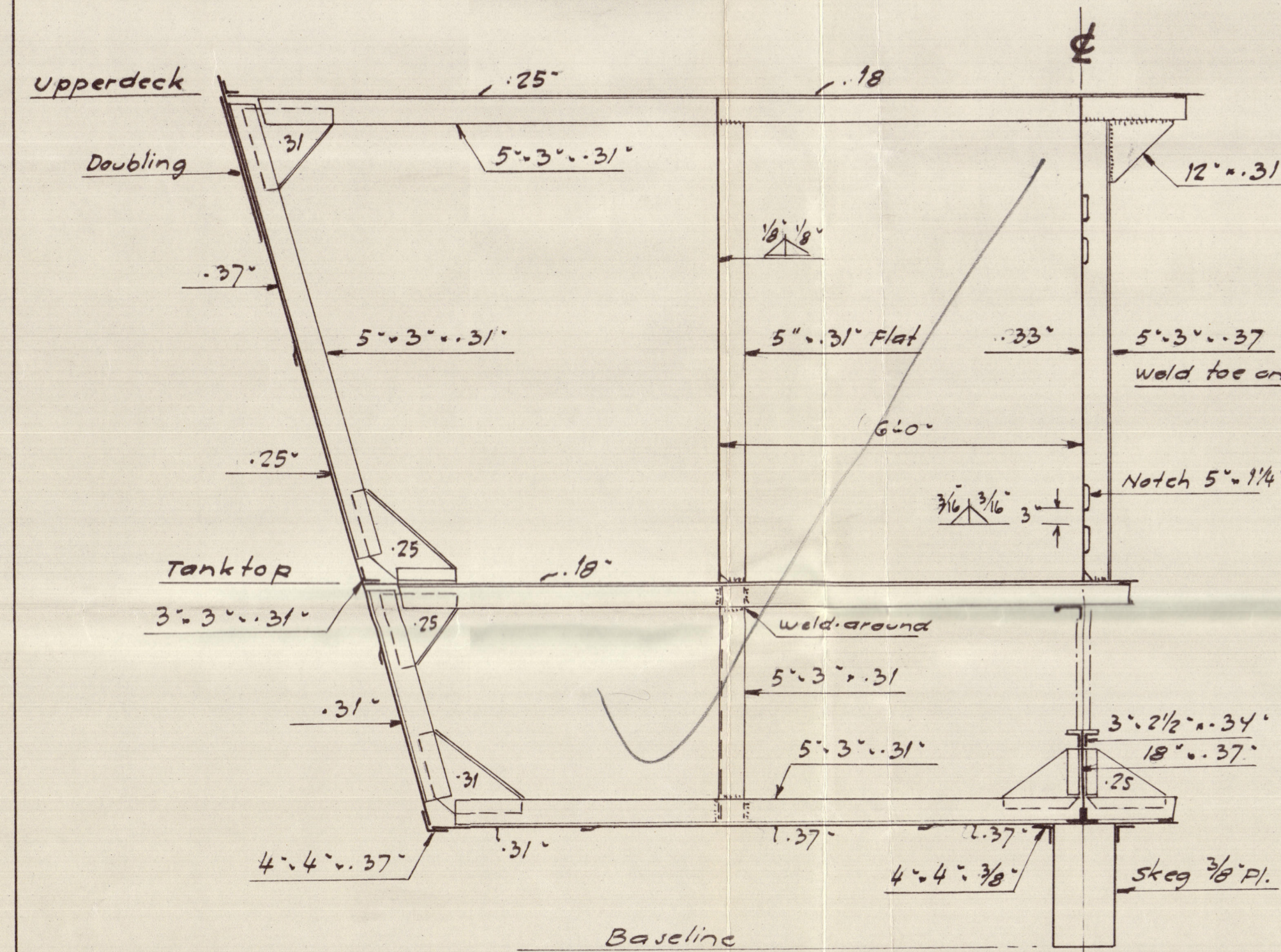
Washplate in Deeptank



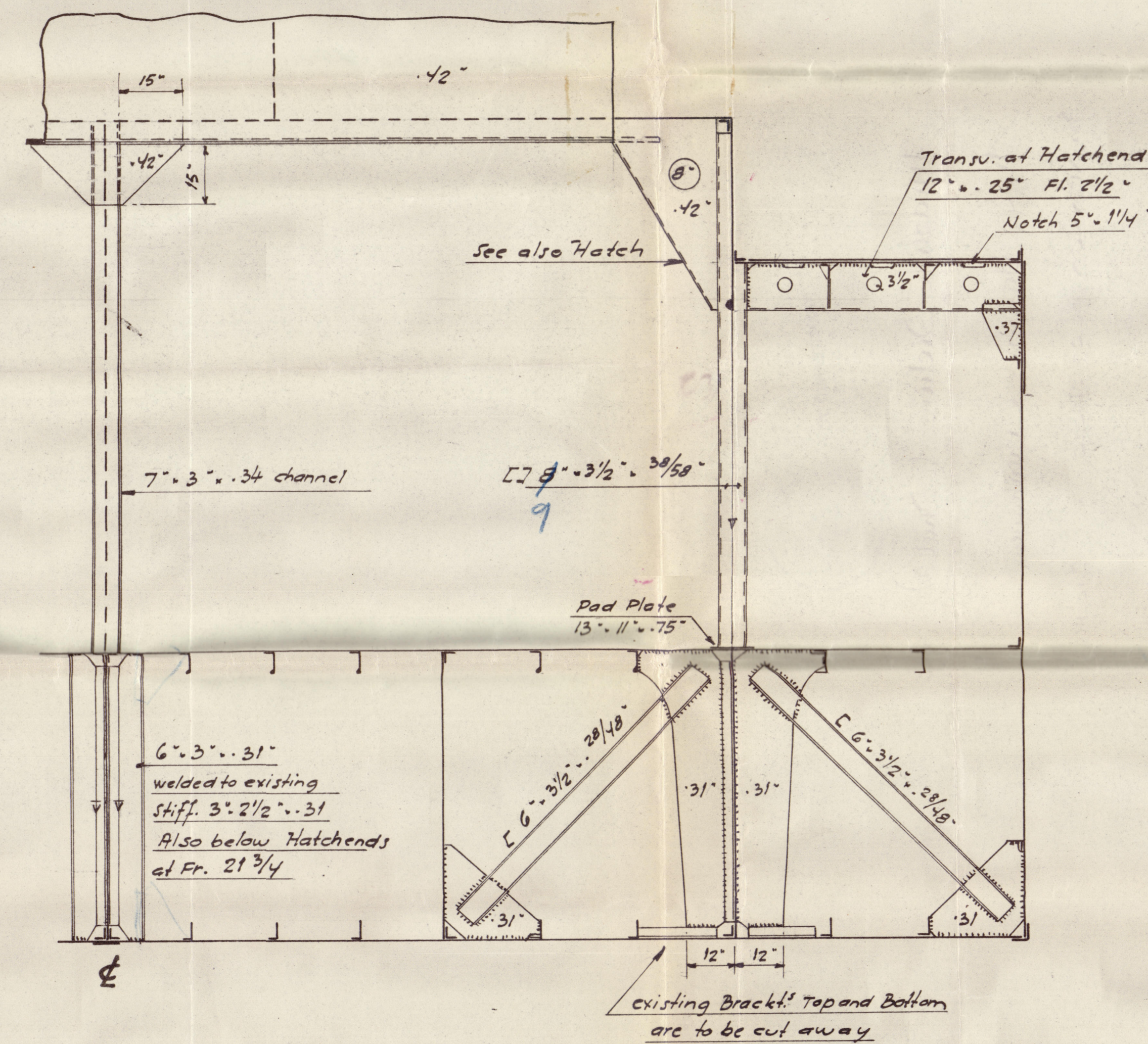
Section in Deeptank Intermediate Frames and Beams 24" Apart



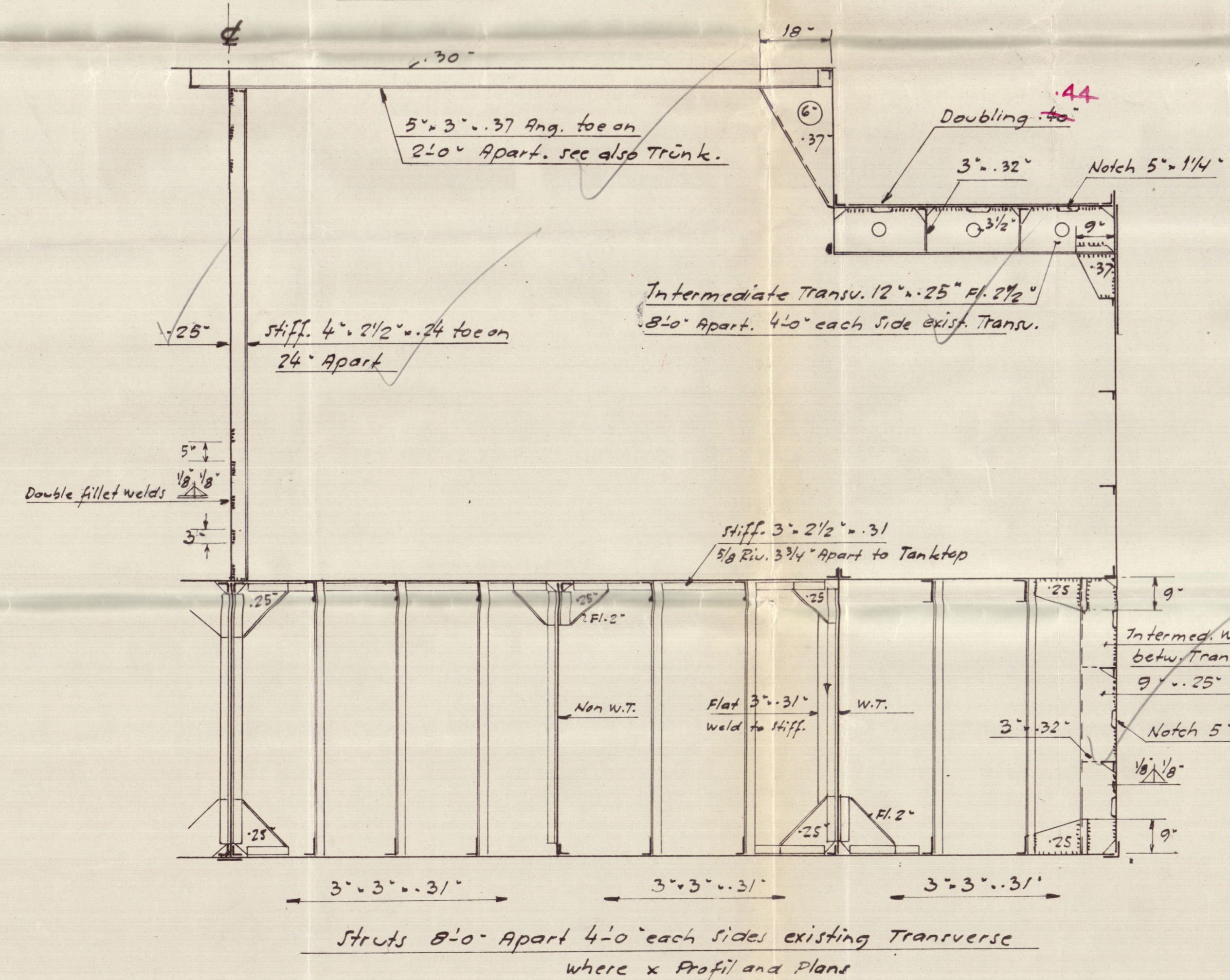
Section in Deeptank at Fr. 51 24" Apart



Pillar on Hatchend at Fr. 27 1/4 AND 21 3/4



Section in Trunkdeck, Upperdeck and Tank with intermediate Webs and Struts



Construction Sections II

ex. L.C.T. 8. M/s Aitanga

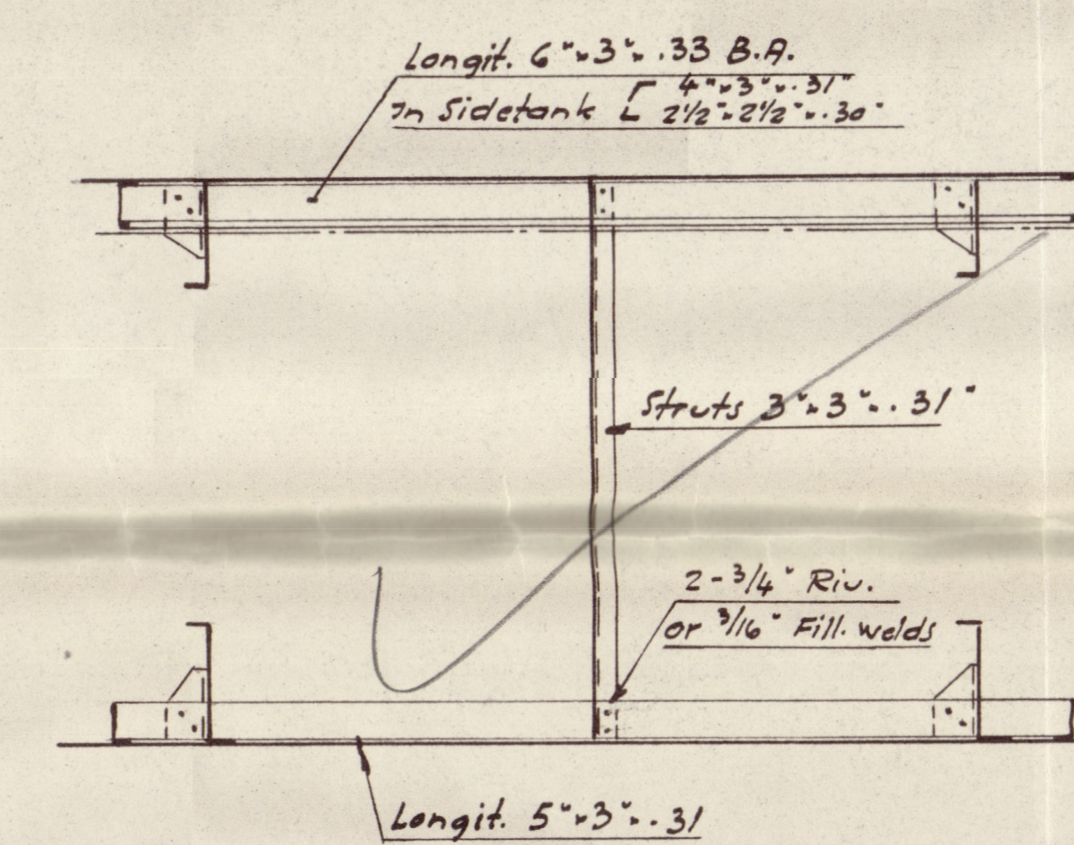
Proposed conversion to Cargo Vessel.

Scale 1/2" = 1'-0"

18 SEP 1947

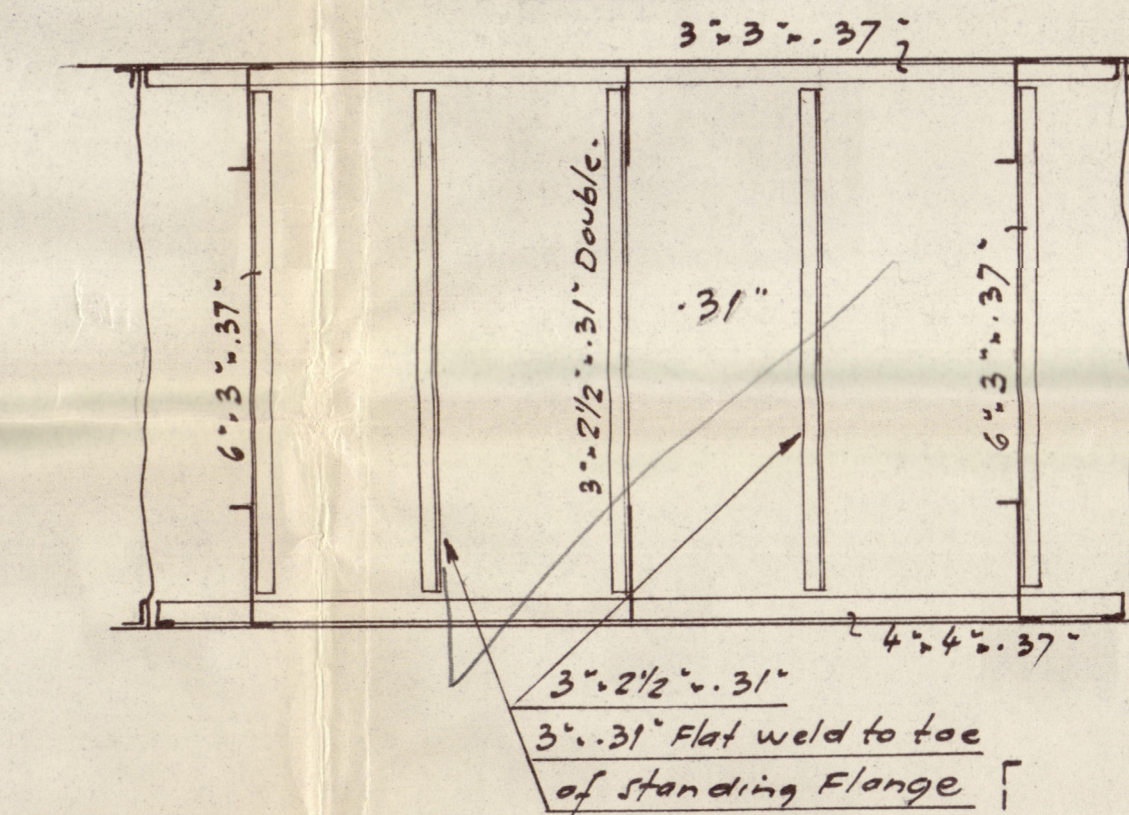
Approved
9/10/47
W. J. P. J.

Intermediate Struts



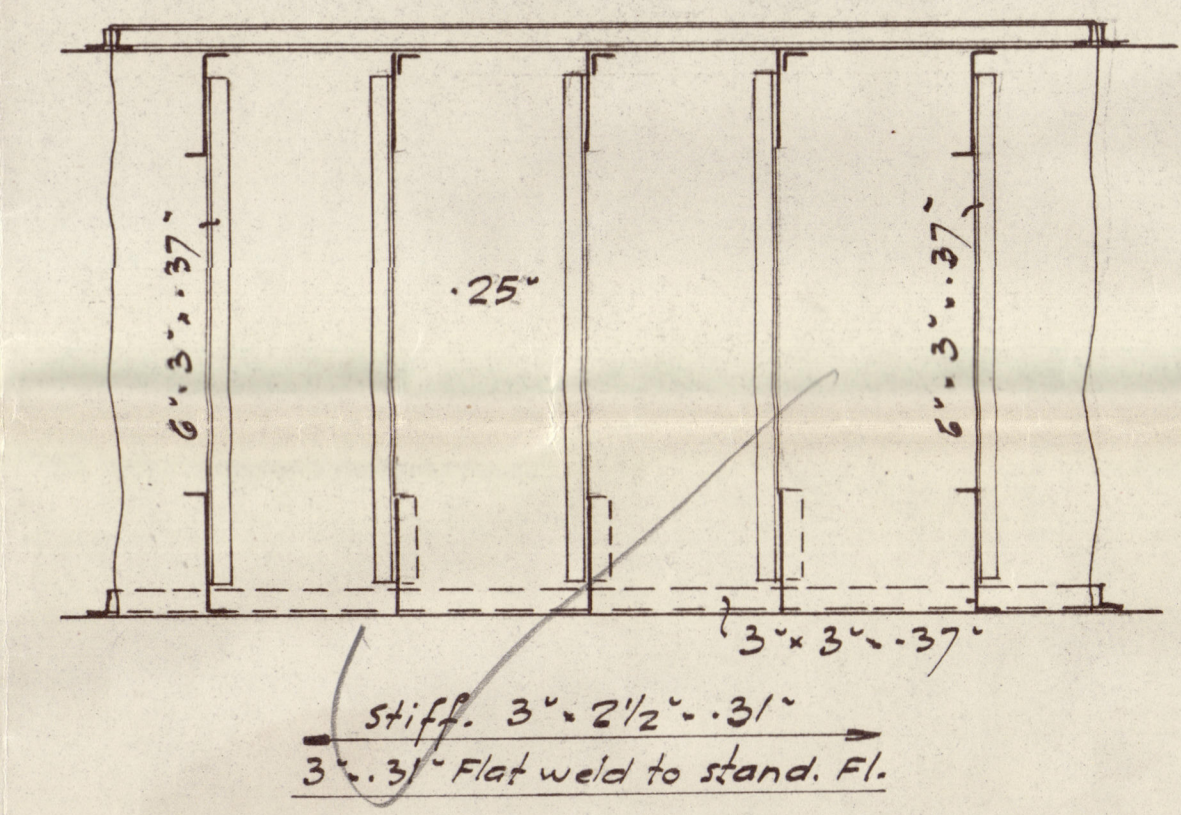
Centregirder

Stranged where Tanks
See Plans



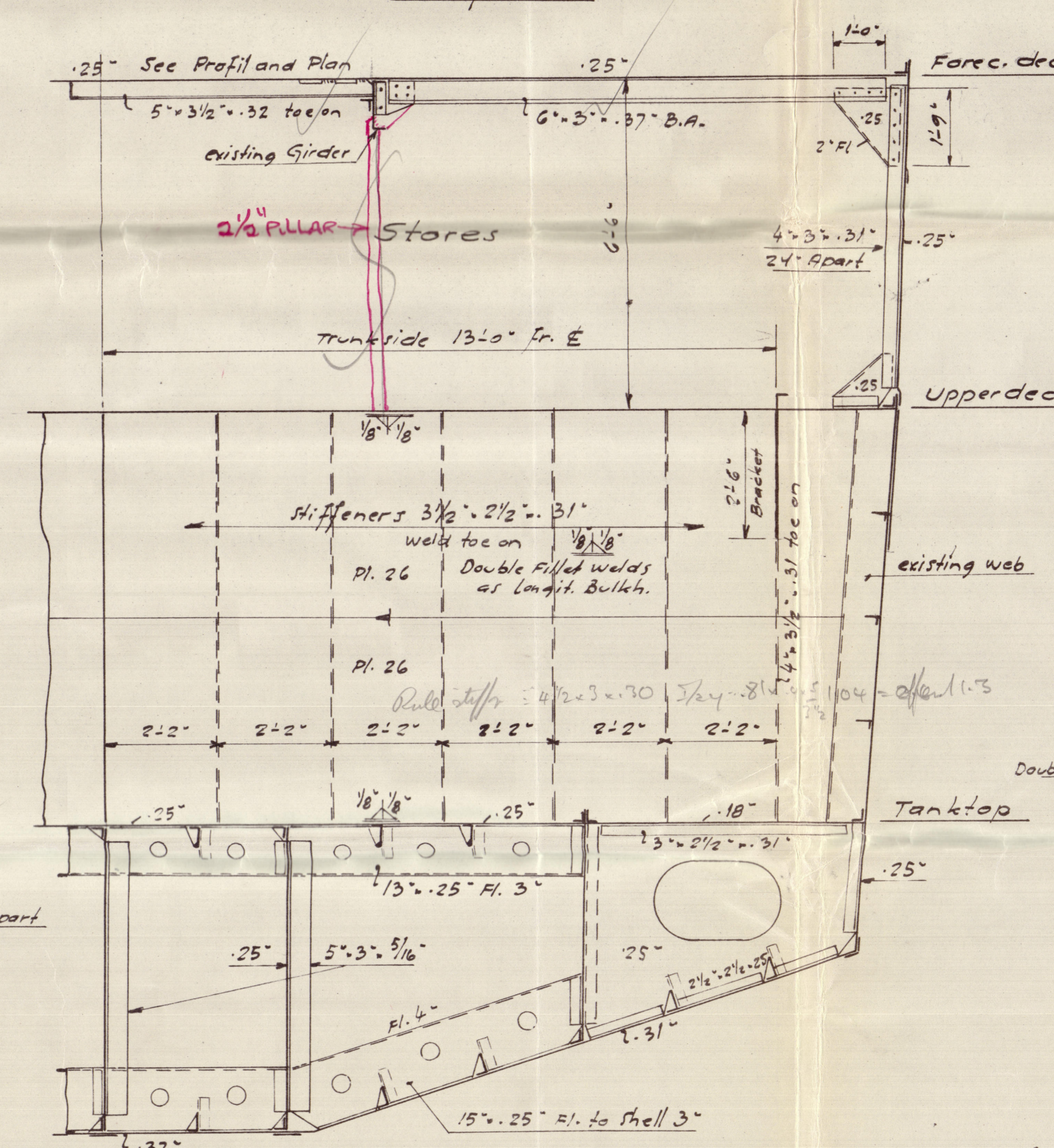
Sidegirder 13'-0" fr. E

Stranged where Tanks
See Plans

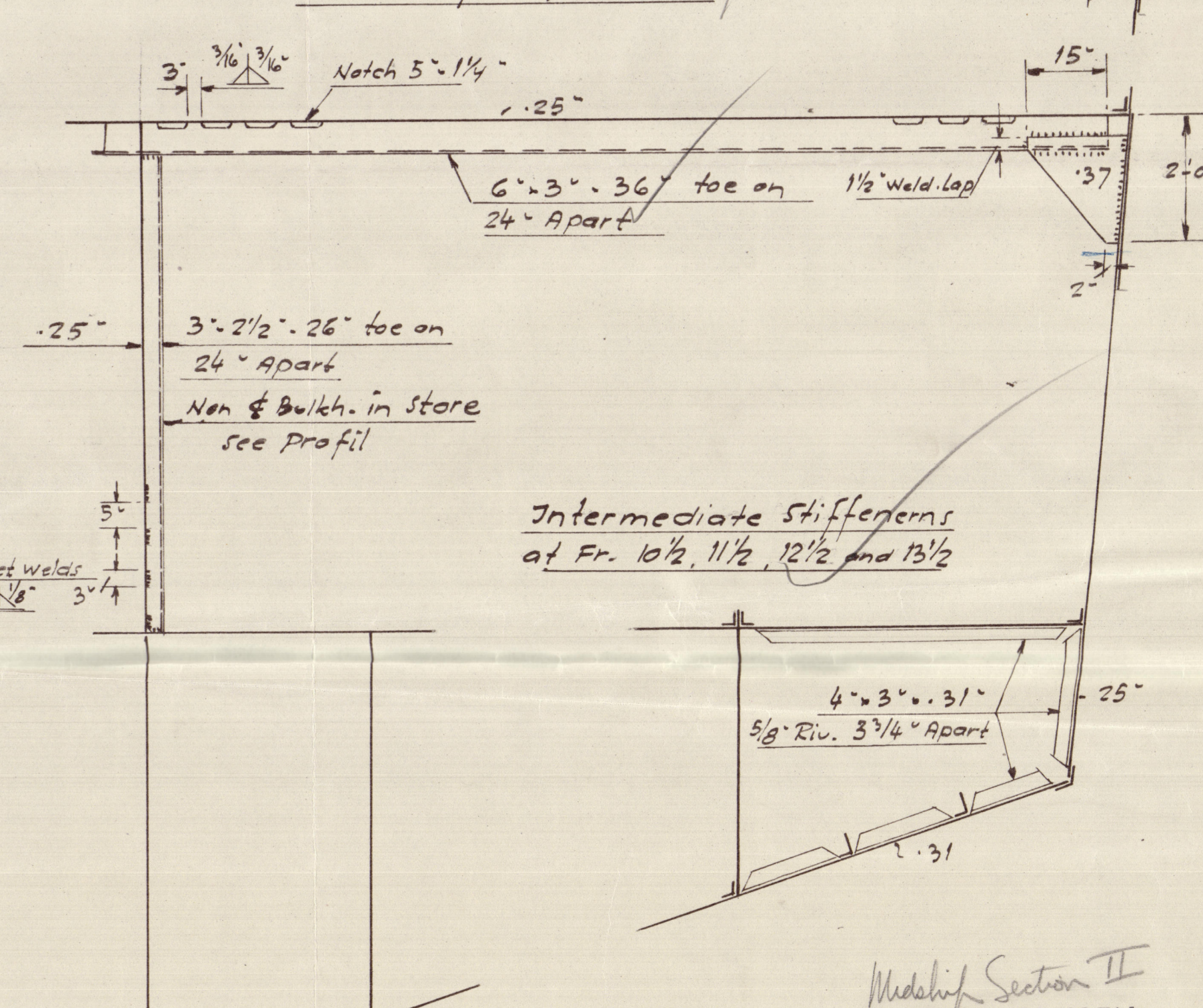


Section in Fore Hold at Fr. 12.

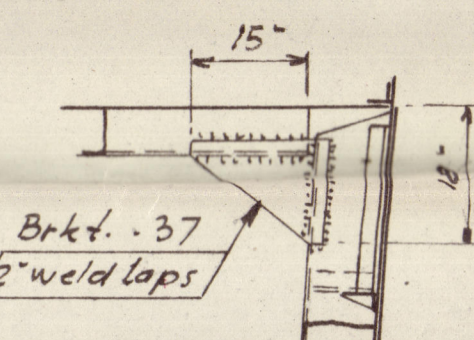
look forward



Section in Upperdeck clear of longitudinals



Brackets where
existing Webs



Intermediate Stiffeners at Fr. 10 1/2, 11 1/2, 12 1/2 and 13 1/2

Model Section II
KNUD E. HANSEN

Consulting naval architect
Rosenstraegels Alle 22 - Copenhagen O.
C. 6442, Tel. 1645, Teleg. Ad. DESIGN.

18 SEP 1947

© 2020

K.E.H. 4779-59

603763-603768-0192

2

RECORDS DEPT
LONDON

TRANSFERRED TO
L. R. SYSTEM

4

Midship Section (Sheet 2)

K. E. Hansen. Copenhagen.

MAITANGA L.C.T.(8)4026.

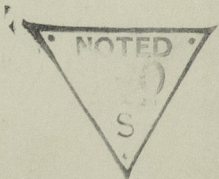
2.10.47.

N/N

1 RIO ESCONDIDO *

Borg

18 SEP 47



MAITANGA L.C.T.(8)4026.

2

Midship Section (Sheet 2)



© 2020

Lloyd's Register
Foundation