

No. 705.  
MIDSHIP SECTION.

## EQUIPMENT.

1ST. ANCHOR	(THOMAS NICHOLSON PATTERN)	3 CNT% EX STOCK
2ND. "	HALLS OR APPROVED.	3 1/2" STOCKLESS.
3RD.		TO DISCONNECT 120 LBS.
120 FATHOMS	CHAIN CABLE	1 1/16" INCH
45 "	STREAM	9/16" "
75 "	HAWESE 6" INCH	{ ALL OF YACHT MANILLA LIGHTLY TARRED AND TO APPROVAL.
90 "	WARPS 4" INCH	
2 COILS	HEAVING LINE	

LENGTH OVERALL. - 109'-0"

LENGTH L.W.L. = 102'-0" (RULE 105'-6")

BREATH MLD. = 20'-0"

DEPTH M.L.D. = 11' 4"

LONGITUDINAL NUMERAL  $L(\frac{B}{2} + D) = 2250.31$

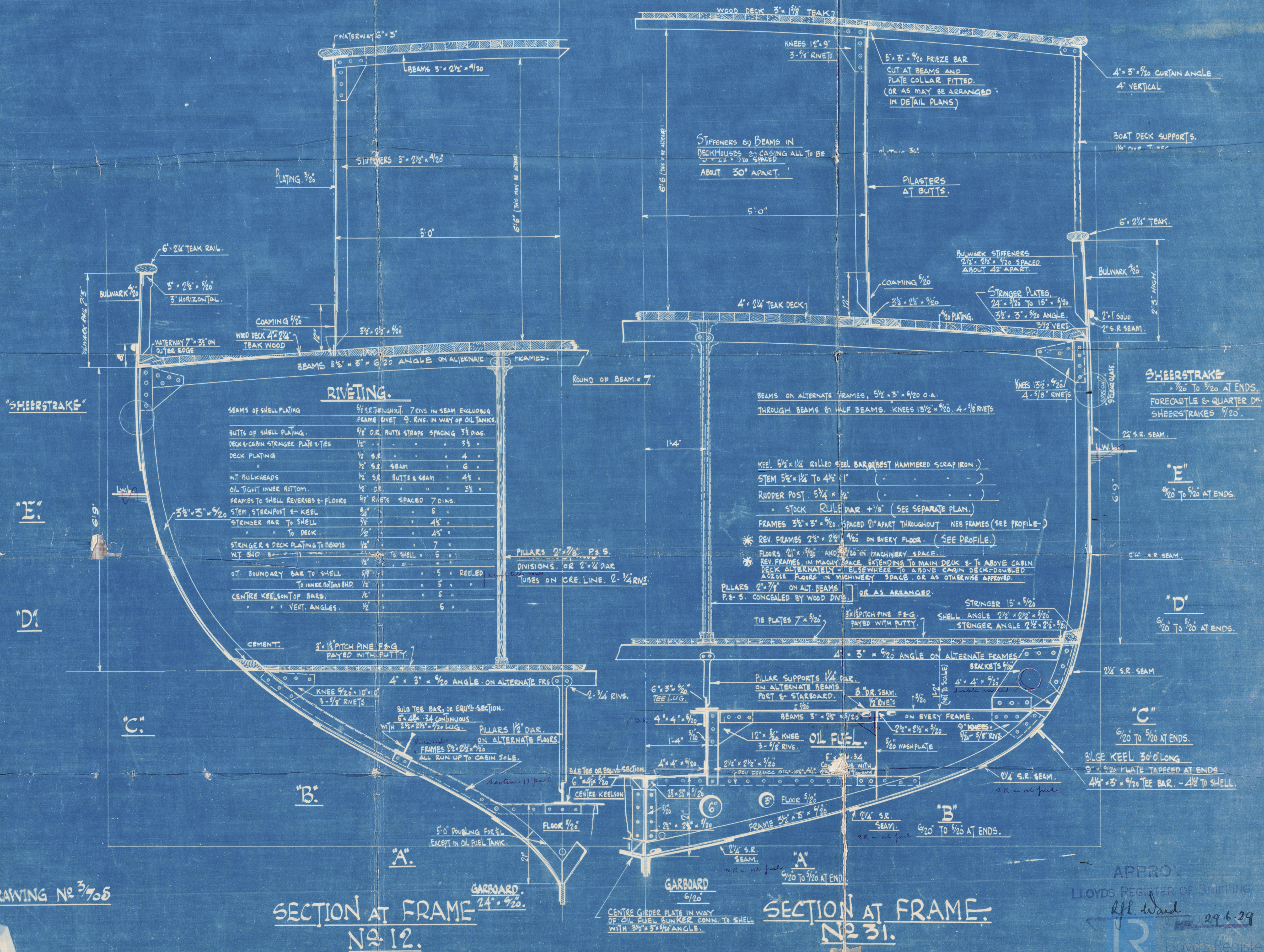
$L/D = 9.32\%$

TRANSVERSE NUMERAL  $(\frac{9}{2} + 0) = 21.55$

$$\frac{P}{P+D} = 25.25\%$$

FULL POWER CLASS 100 A.1. (YACHT REGISTER.

scale 1" = one foot.



DRAWING № 3/705

SECTION AT FRAME  
NO 12.

SECTION AT FRAME.  
N231.

L.H. Ward 29.6.29

003750-003762-0285



Nº. 705.

Hall Russell & Co. L<sup>d</sup>.

Midship Section.

Nº. 705. TARANSAY 

abu. Report: 16128.

Twin Screw Motor Yacht.



003750-003762-0285