

# Lloyd's Register of Shipping.

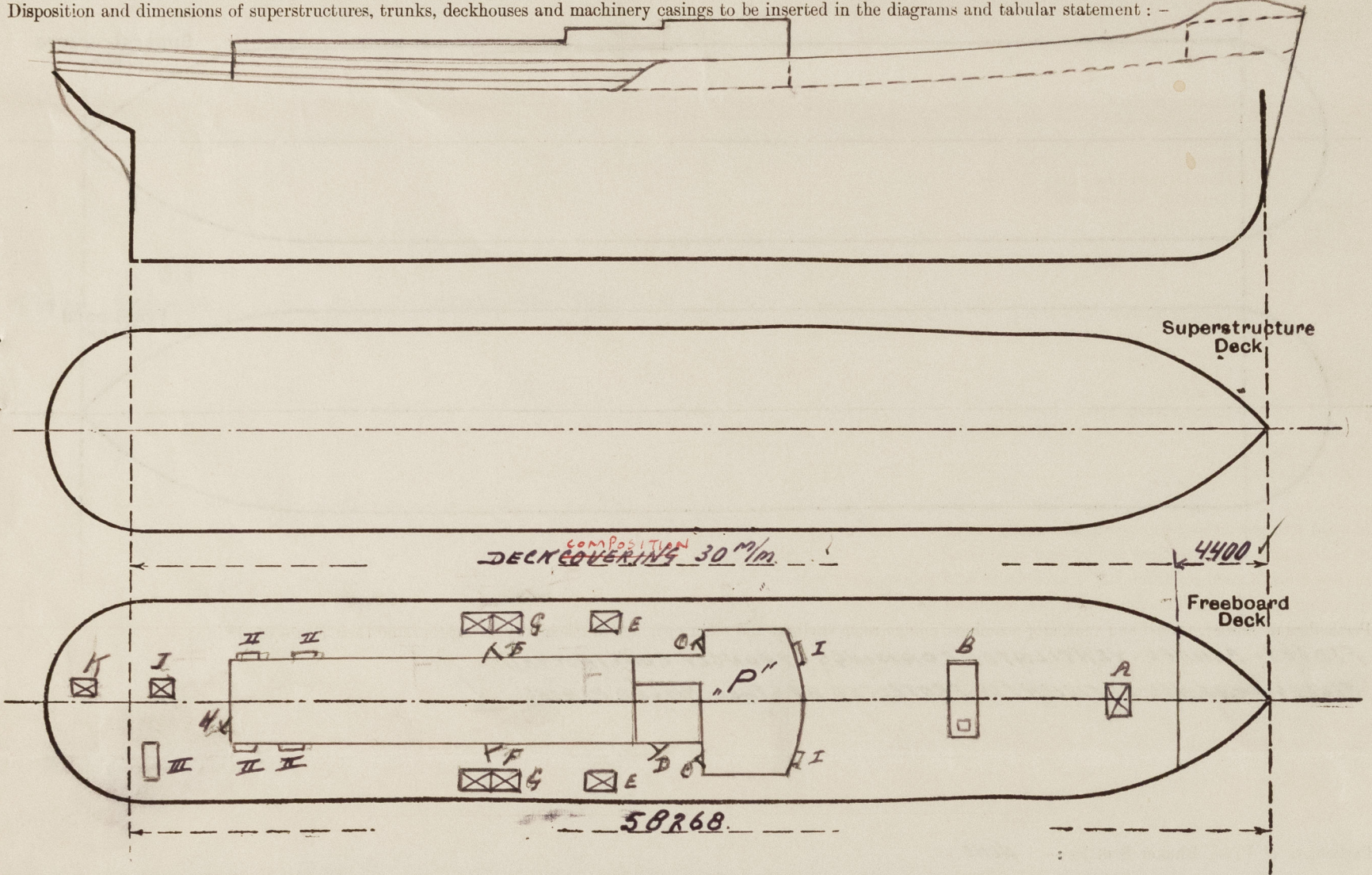
## SURVEYS FOR FREEBOARD.

(CONDITIONS OF ASSIGNMENT.)

Nº 35237

Ship's Name	<i>A.M. 6</i>	Port of Survey	<i>ROTTERDAM</i>
Official Number		Surveyor's Signature	<i>G. J. G. J. G.</i>
Nationality and Port of Registry	<i>DUTCH - AMSTERDAM</i>	Date of Survey	<i>AUGUST 1952</i>

Disposition and dimensions of superstructures, trunks, deckhouses and machinery casings to be inserted in the diagrams and tabular statement : -



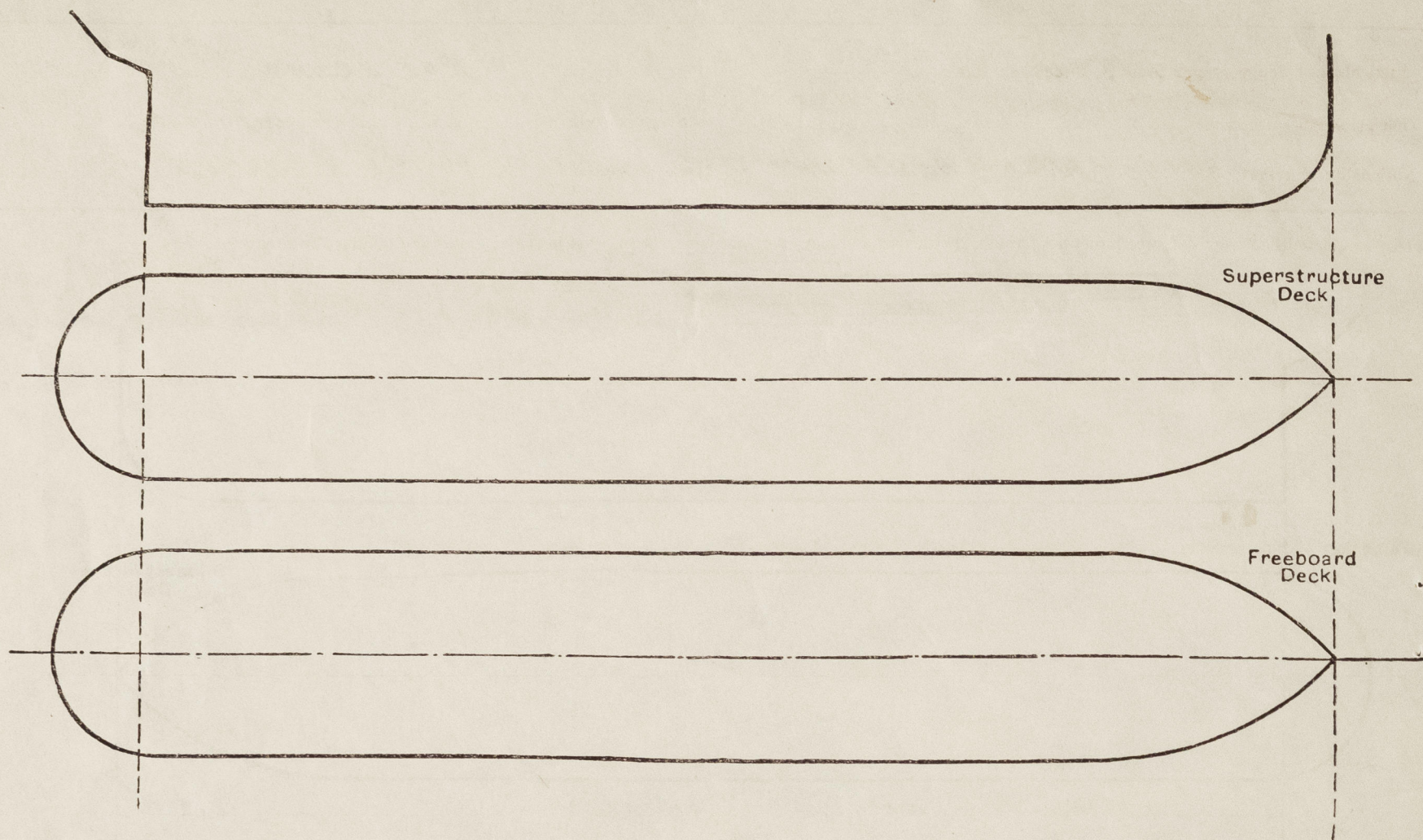
Particulars of Superstructures, Trunks, Casings, Deckhouses.								
	Coaming	Plating	Stiffeners	Spacing	End Attachments of Stiffeners	Size of Openings	Height of Sills	Height of Casings
Poop Bulkhead ... ..								
Raised Quarter Deck Bulkhead ...								
Bridge, After Bulkhead ... ..								
Bridge, Forward Bulkhead ... ..								
Forecastle Bulkhead ... ..		<i>8</i>	<i>4 100.65.9</i>	<i>920</i>	<i>NONE</i>	<i>1350. 695</i>	<i>460</i>	<i>2100.</i> ✓
Trunk, Aft ... ..								
Trunk, Forward ... ..								
Exposed Machinery Casings on Freeboard or Raised Quarter Decks ...	<i>600.10</i>	<i>7 1/2</i>	<i>4 75.65.0</i>	<i>050</i>	<i>BRACKETS</i>	<i>F 1350. 700 H 1200. 700</i>	<i>610</i>	<i>2000.</i> ✓
Exposed Machinery Casings on Superstructure Decks ... ..								
Machinery Casings within Superstructures not fitted with Class I Closing Appliances ... ..								
Deckhouses on Flush Deck Ships ...								

Particulars of Closing Appliances (state if capable of being manipulated from both sides).	
Poop Bulkhead ... ..	
Raised Quarter Deck Bulkhead ...	
Bridge, After Bulkhead ... ..	
Bridge, Forward Bulkhead ... ..	
Forecastle Bulkhead ... ..	<i>HINGE] STEEL W.T. DOOR OPERABLE BOTH SIDES.</i> ✓
Exposed Machinery Casings on Freeboard or Raised Quarter Decks ...	<i>DO.</i> ✓
Exposed Machinery Casings on Superstructure Decks ... ..	
Machinery Casings within Superstructures not fitted with Class I Closing Appliances ... ..	
Deckhouses on Flush Deck Ships ...	



# PARTICULARS OF PROTECTION TO OPENINGS, ETC.

The following diagrams should be used to indicate the positions of cargo and coaling hatchways, gangway, cargo and coaling ports, ventilators, companionways, etc., which would affect the seaworthiness of the ship:—



Particulars of fiddle, funnel and ventilator coamings, engine room skylight and other openings in machinery casing tops and their means of closing:—

**FIDLEY. FUNNEL. VENTILATOR COAMINGS STRONGLY CONSTRUCTED.**

**FIDLEY GRATINGS EFFICIENTLY PROTECTED BY STEEL HINGED PLATES.**

Particulars of Flush Bunker Scuttles:— **NONE.**

Particulars of Companionways:—

**STRONG STEEL DECKHOUSE, "P" WITH 2 OPENINGS, "C" 1350 x 650 SILL 610 mm WITH STRONG HINGED TERN DOORS. 1 OPENING, "D" 1400 x 650 " 610 mm WITH HINGED STEEL W.T. DOOR ALL DOORS OPERABLE BOTH SIDES.**

Particulars of Ventilators in exposed positions on freeboard and superstructure decks:—

**ON FREEBOARD DECK NO VENT COAMINGS.**

Particulars of Air Pipes in exposed positions on freeboard, raised quarter, or superstructure decks:—

**ALL AIR PIPES ON FREEBOARD DECK 910 mm HIGH ON FORE DECK 460 mm " FOR OILTANKS FITTED WITH GAUZE WOODEN PLUGS AND CANVAS COVERS AVAILABLE.**

Particulars of Gangway Cargo and Coaling Ports:—

**NONE FITTED.**

**A.M.6.**

Particulars of Scuppers and Sanitary Discharge Pipes:—

**SANITARY DISCHARGES BELOW FREEBOARD DECK LEADING TO ENGINE ROOM FITTED WITH SELF CLOSING COCK**

**SANITARY DISCHARGES FROM SPACES ABOVE FREEBOARD DECK LEADING TO SHIPS SIDES WITH NON RETURN VALVE.**

Particulars of Side Scuttles:—

**IN DECK HOUSES ONLY.**

Vertical distance of Sill of lowest Side Scuttle above top of keel

Particulars of Guard Rails:—

**CLOSED BULWARK ON FORECASTLE DECK 900 mm EFFICIENTLY CONSTRUCTED. CLOSED BULWARK ON FOREPART FREEBOARD DECK 900 mm AND HIGHER. REMAINDER PART OPEN GUARDRAILS 960 mm HIGH. WITH SUFF. STANCHIONS AND 3 STEEL WIRES STRETCHED BY SCREWS.**

Particulars of Gangways, Lifelines, etc.:—

**GANGWAY FROM UPPER PART OF BRIDGE TO F'LE EFFICIENTLY CONSTRUCTED.**

## Particulars of Freeing Arrangements.

	Length of Bulwark	Height of Bulwark	Size of Freeing Ports	Number each side	Area each side	Rule area each side
After Well ... } ...	24000 ✓	900 ✓	9 MOORING PIPES 300 x 250		0.675 m <sup>2</sup> ✓ + open rails.	1.18 m <sup>2</sup>
Forward Well ... } ...						

State position of each freeing port ... } After Well:—

(F. and A. position and height above deck edge) } Forward Well:—

State whether the freeing ports are fitted with shutters, bars, or rails, and give particulars of such:—

Additional area where sheer is less than standard.



PARTICULARS OF PROTECTION TO OPENINGS, ETC.

HATCHWAYS ON FREEBOARD AND SUPERSTRUCTURE DECKS.									
Description of Hatchway ... ..			A"	B"	E"	G"	J"	K"	
Dimensions of Hatchway ... ..			750.750	2300.1000	600.500	1350.600	750.750	750.750	
COAMINGS	{	Height above Deck ... ..	610 ✓	480 ✓	610 ✓	610 ✓	610 ✓	460 ✓	
		Thickness { Sides	8 ✓	8 ✓	7 ✓	8 ✓	7 ✓	7 ✓	
		Ends							
		Stiffeners ... ..	✓	✓	✓	✓	✓	✓	
		Brackets, Stays ... ..	✓	✓	✓	✓	✓		
HATCH BEAMS	{	Number ... ..							
		Spacing ... ..							
		Scantling and Sketch ... ..							
		Bearing Surface ... ..							
FORE AND AFTERS	{	Number ... ..							
		Spacing ... ..							
		Unsupported Lengths							
		Scantling* and Sketch ... ..							
		Bearing Surface ... ..							
HATCH COVERS	{	Material ... ..							
		Thickness ... ..							
		How fitted ... ..							
		Bearing Surface ... ..							
Spacing of Cleats ... ..			✓						
Number of Tarpaulins ... ..			✓	FB					
FL. W.T. STEEL COVERS WITH SUFF. TOSGLES. F.B. ✓ STEEL 8" M COVER EFF. STIFFENED CLOSED WITH 5/8 BOLTS. ENTRANCE HATCH ON TOP 850, 850 CLOSED WITH HINGED STEEL W.T. COVER AND TOSGLES. ✓									
*Are wood fore and afters steel shod at all bearing surfaces? ✓ Are battens and wedges efficient and in good condition? ✓ Are tarpaulins in good condition and in accordance with rule requirements? ✓ Are lashings provided in accordance with rule requirements? ✓									

Particulars of any special features :—

I - II - III TRUNNED SKYLIGHTS WITH BULL EYES  
AND EFFICIENT STEEL DEADLIGHTS. ✓

Endorsement at first survey and at surveys for renewal of Certificate :—

The fittings and appliances are in accordance with the particulars shown on this form (or as now modified) and are in good condition.

