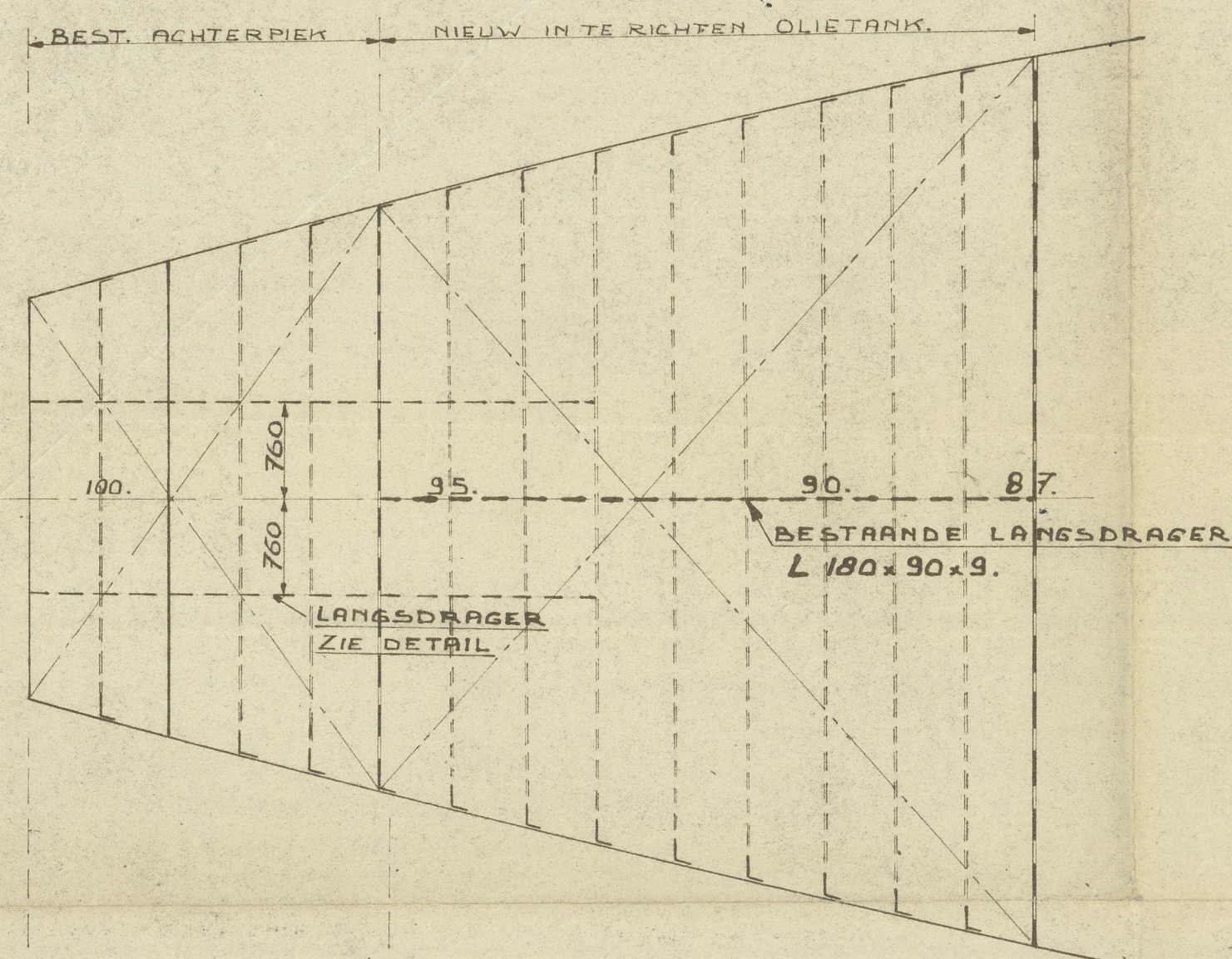


5-11-51.

BEPLATING TUSSENDEK SPT 87-101.



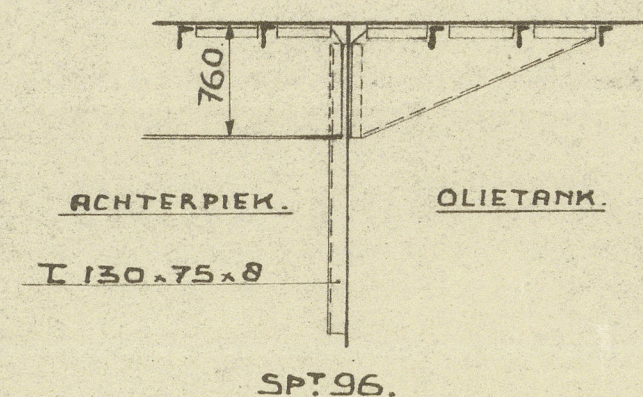
BESTAAND DEK 7 1/2 mm. BESTAAND DEK 6 1/2 mm.
DEK BALKEN L 130x75x8. (BESTAAND).

OVERVLOEIHOOOGTE
3,25 m BOVEN TANKDEK.

KNIEEN 450x450x8.

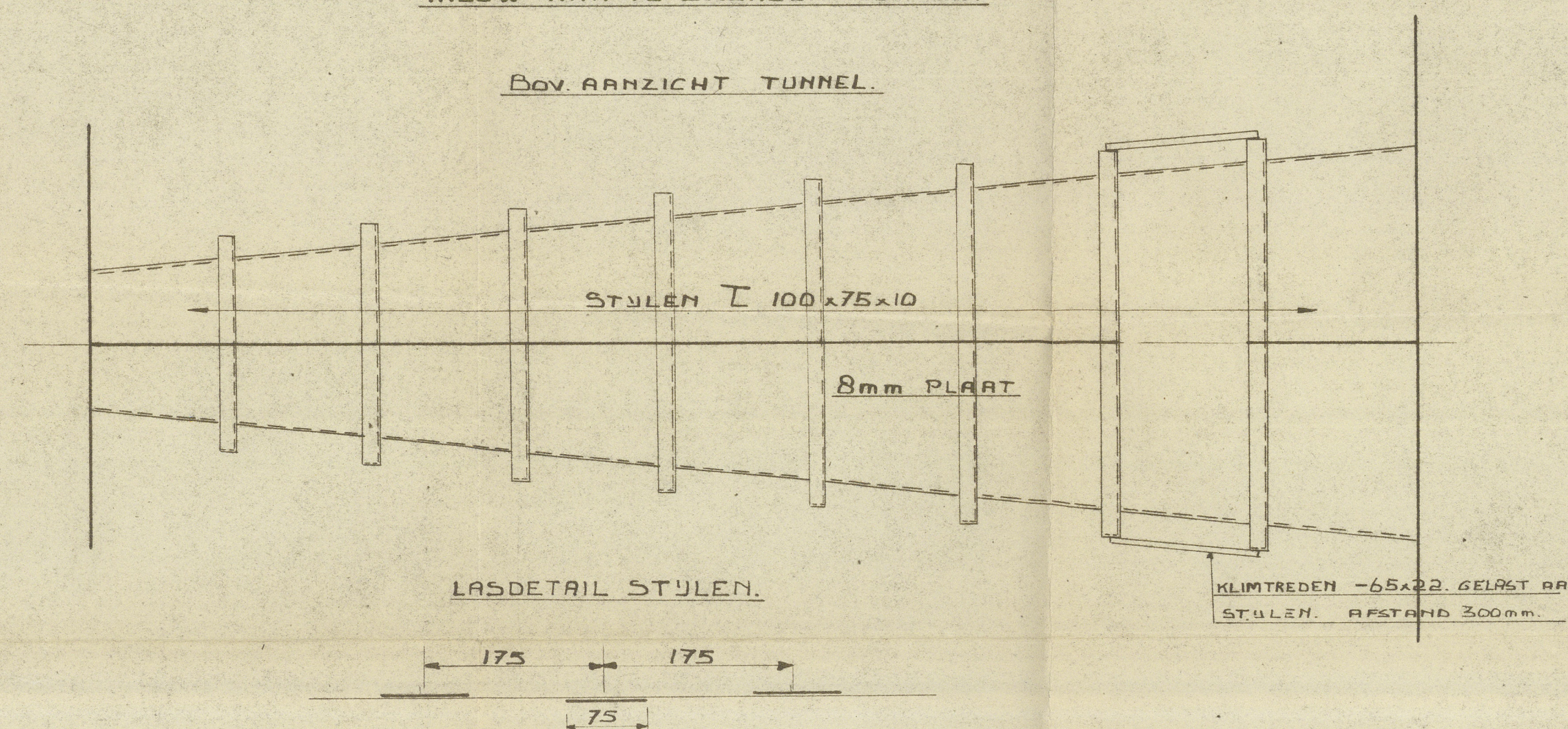
L 100x75x8 SPT 94-87
BEST. STEKERS OP SPT 89 en 91
NIEUWE STEKERS OP SPT 88-90-92.

DETAIL LANGSDRAGERS
760 UIT 4 SDEEN BB.

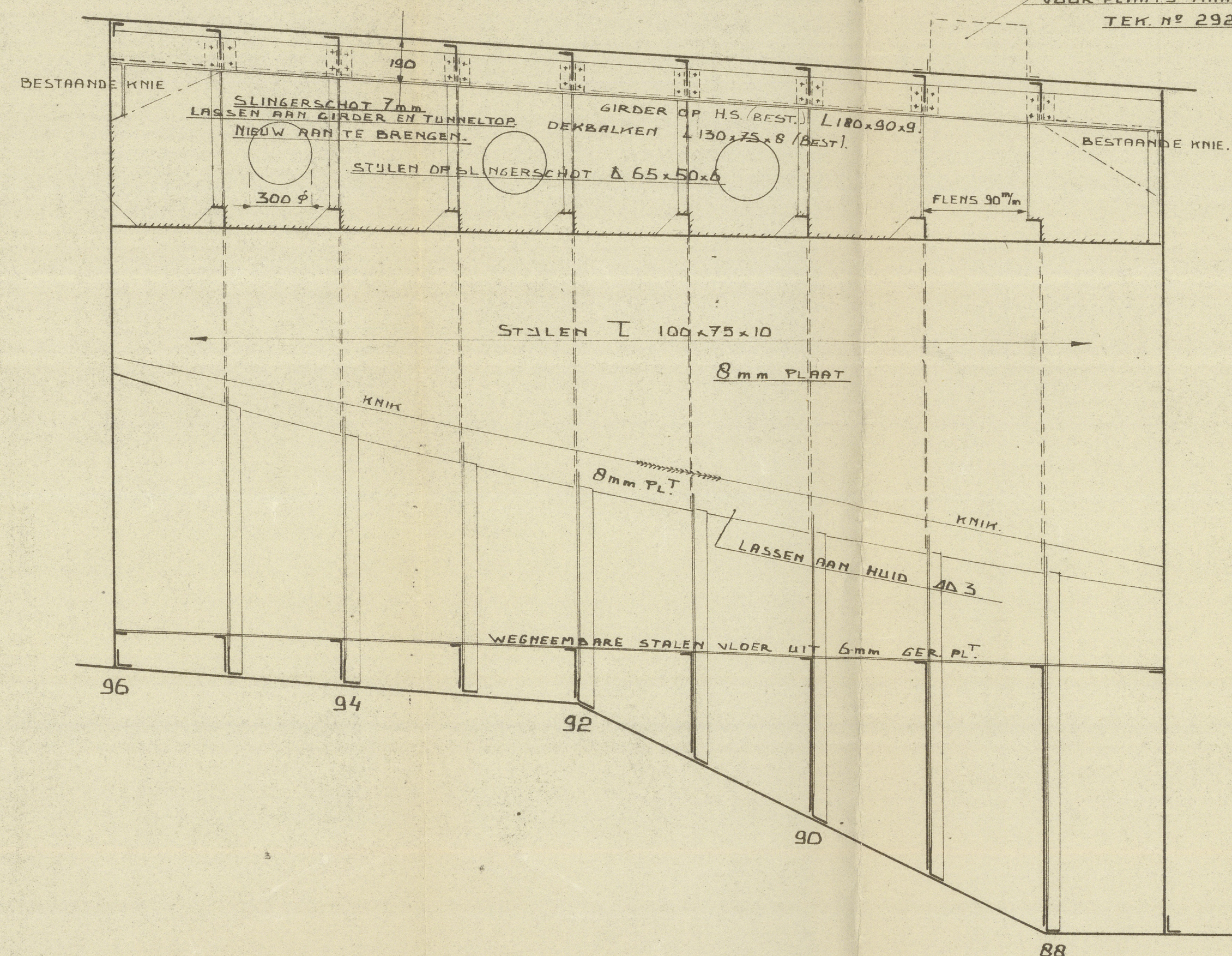


NIEUW AAN TE BRENGEN TUNNEL.

BOV. AANZICHT TUNNEL.

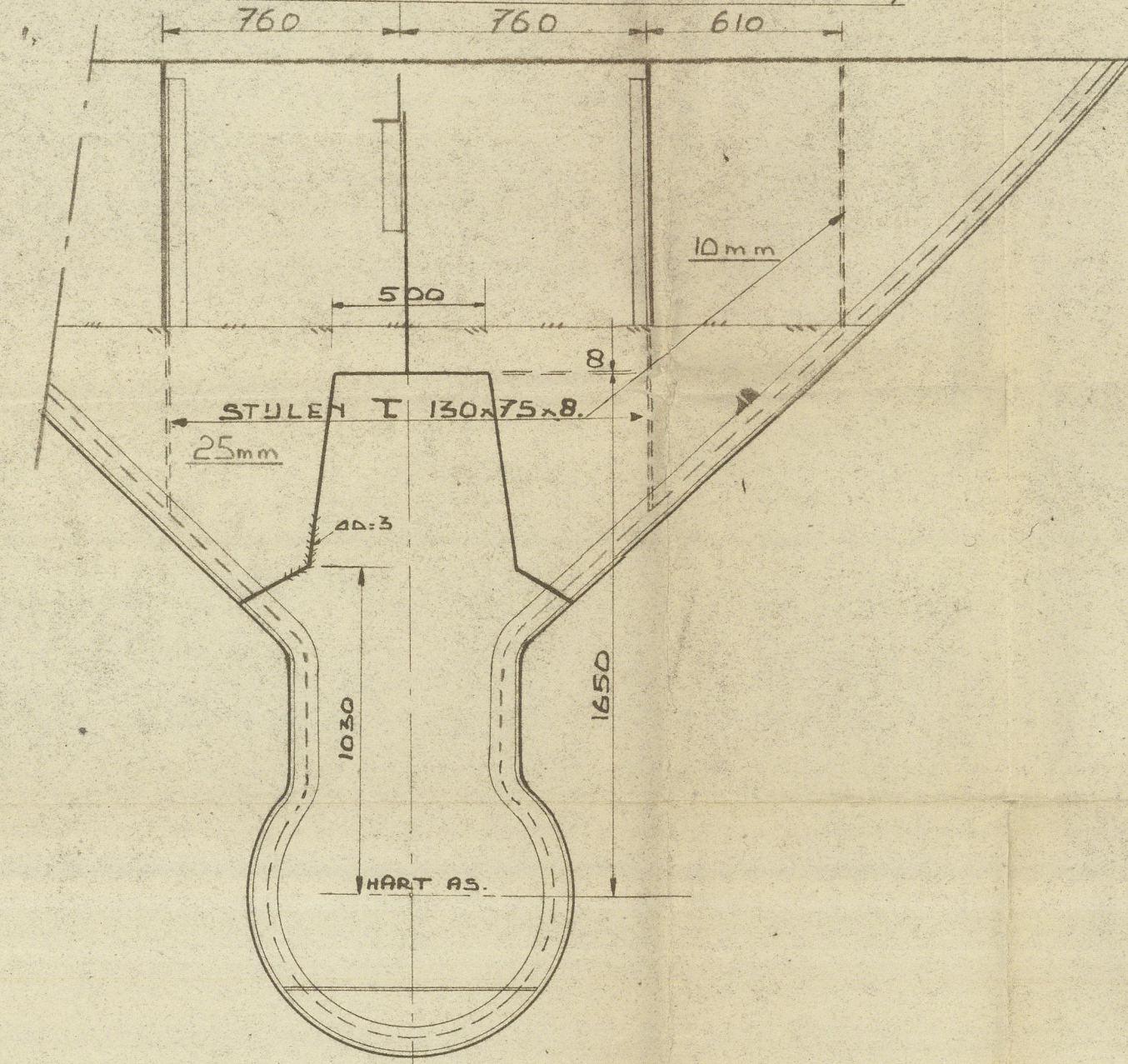


DOORSNEDEN OP HART SCHIP.



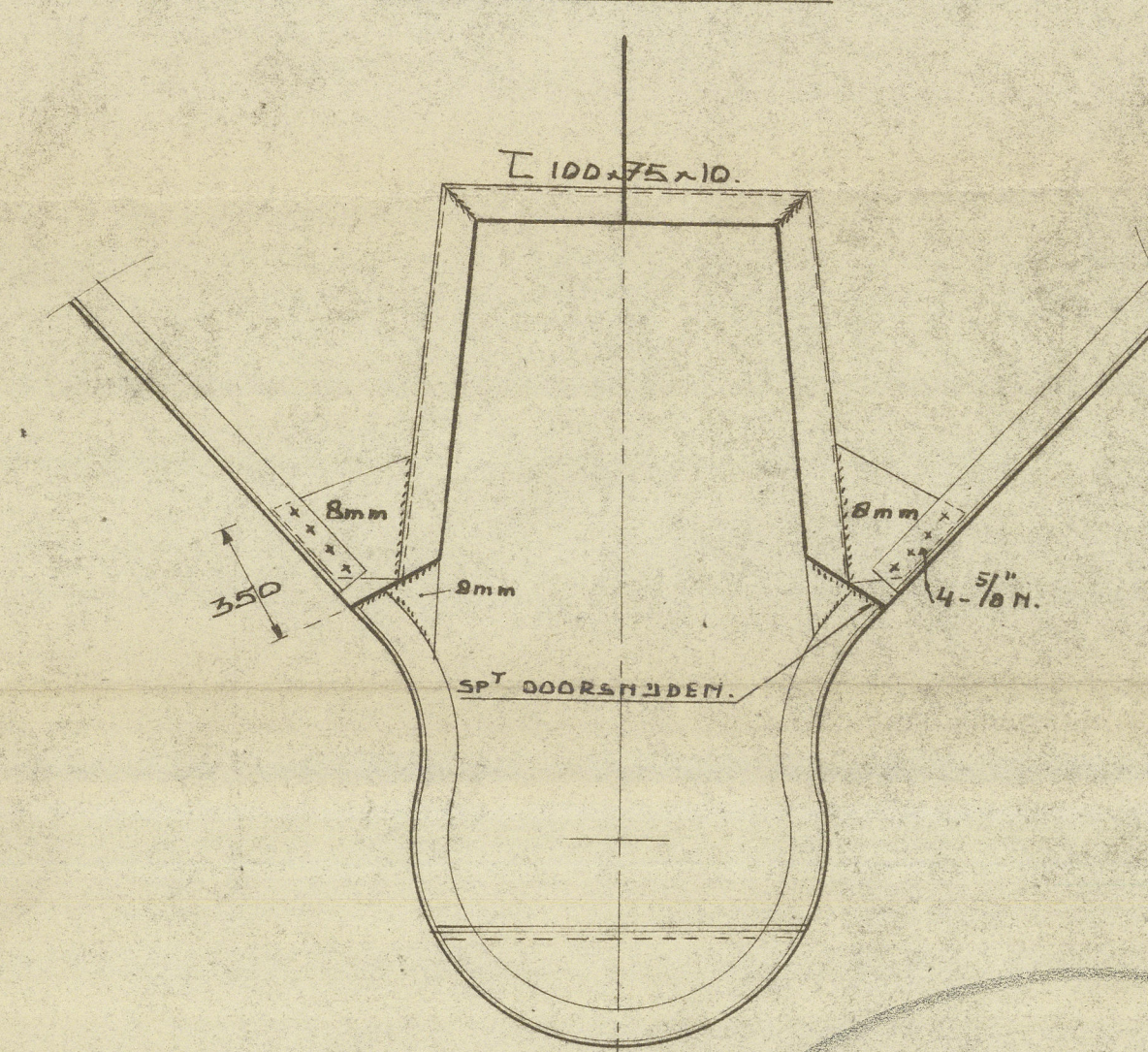
BEST. HOOFDJE VERVALT.
VOOR PLATS MANGATEN
TEK. N° 292.

(BESTAAND) SCHOT SPT 96 (NAAR ACHTER GEZIE).

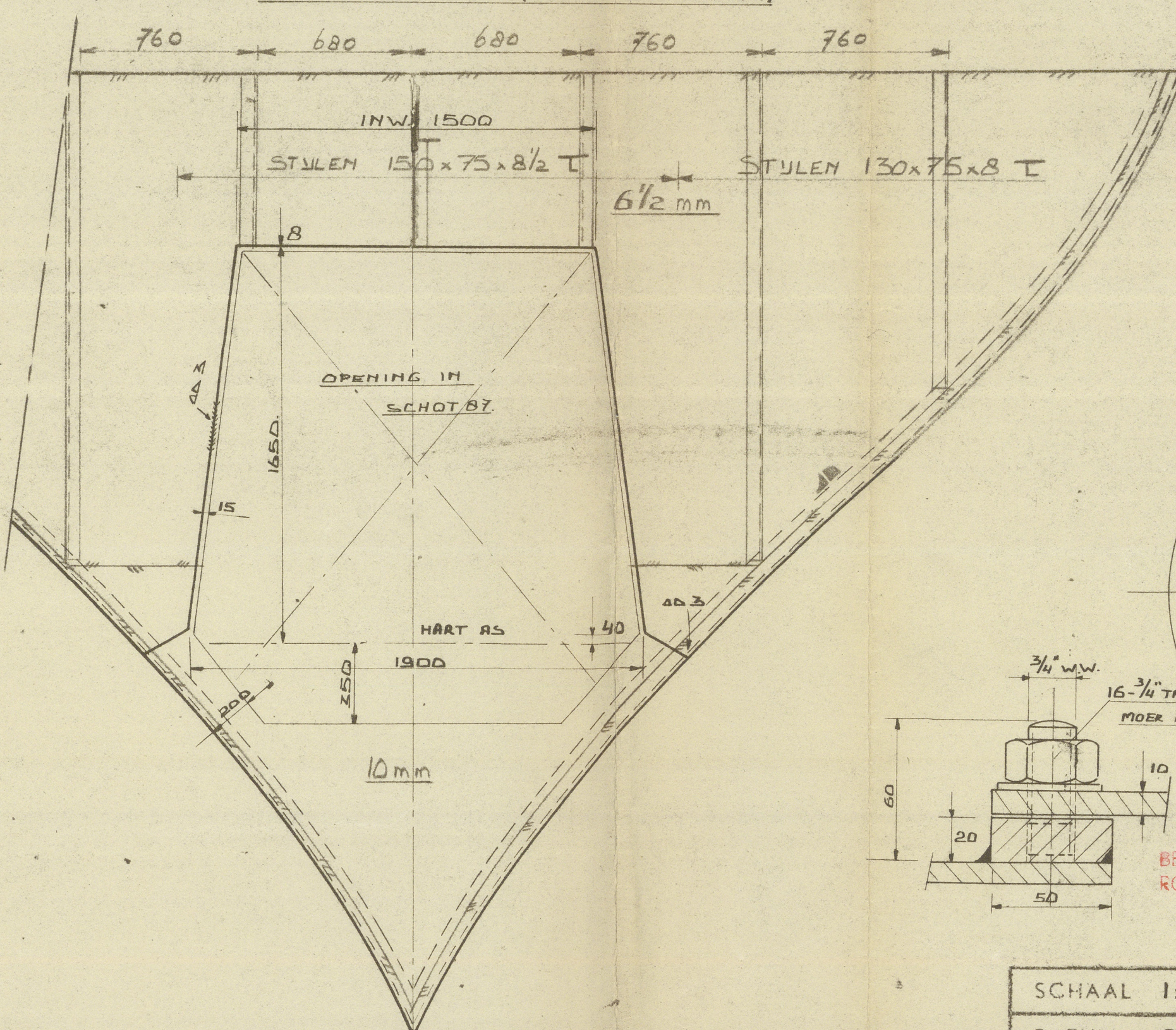


DOORSN. SPT 93.

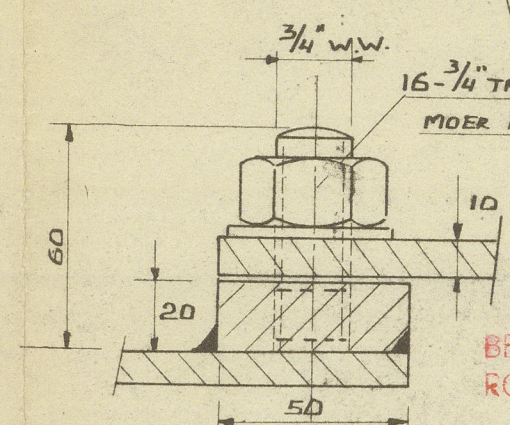
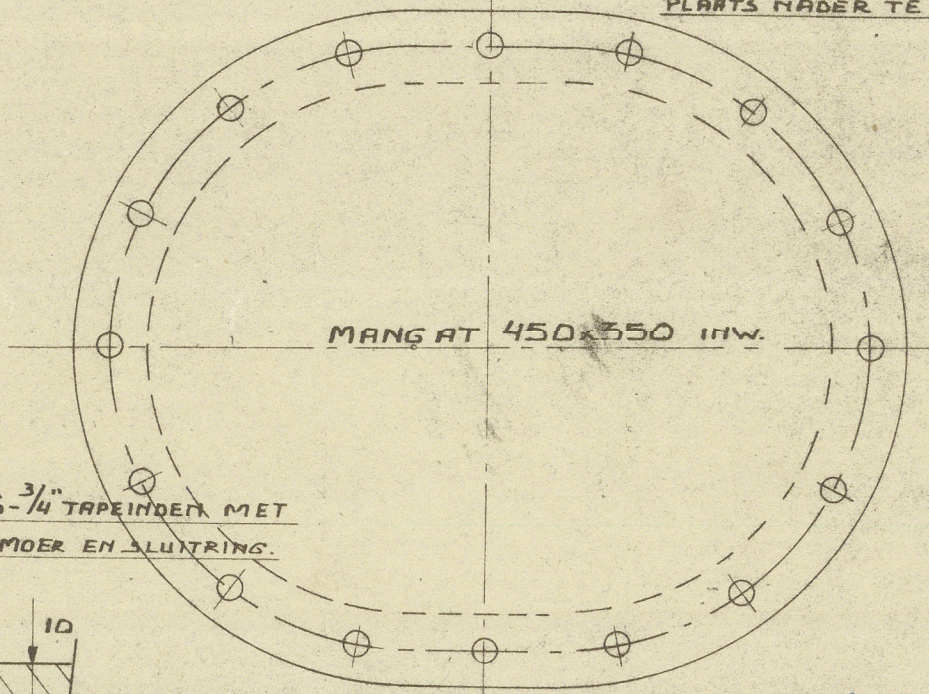
NAAR ACHTER GEZIE.



(BESTAAND) SCHOT SPT 87 (NAAR VOREN GEZIE).



DETAIL MANGAT IN DEK
PLATS NADER TE BEPALEN.



BELONGS TO
ROTTERDAM REPORT N° 35469 H

LONDON COPY, 5.11.51

SCHAAL 1:20	GET. <i>OT</i>	A.M. 1-16.
DATUM 23-3-51.	GEW.	
TANK MET TUNNEL IN ACHTERSCHIP.		
WERF DE HOOG N.V. ROTTERDAM	ORDER 382	TEEK. BLAD

DESTROY
1976
TO ACCOMPANY REPORT No. 35469
DATED 10.52.