

LONGITUDINAL SECTION, DECKS PLANS AND HATCHES.
STEEL SINGLE SCREW STEAMER, No 370. "Halcyon" As Built.
MOULDED DIMENSIONS 270'-0" B.P. 39'-0" B.M. 17'-0" D.M. TO UPPER DECK 24'-9" D.M. TO SHELTER DECK
TO CLASS 100 A1 AT LLOYDS SHELTER DECK.

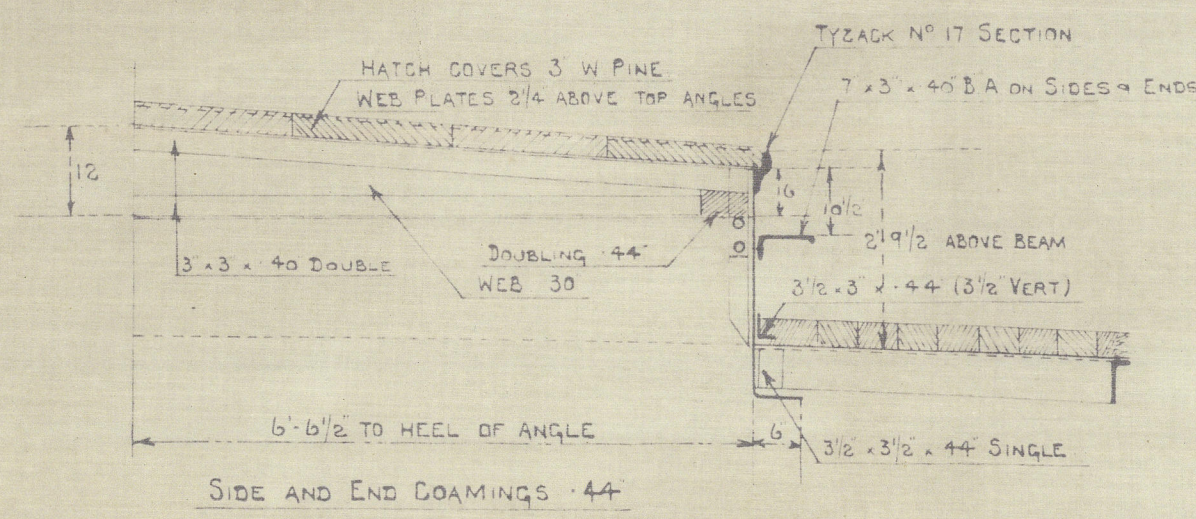
SCALE - 1/8" = 1 FOOT.

| LLOYD'S NUMERALS | |
|-----------------------------------|-------|
| TRANSVERSE No | 50 |
| LONGITUDINAL No | 1500 |
| 1/2 TO UPPER DECK | 15 88 |
| 1/2 TO SHELTER DECK | 10 88 |
| 1 WHERE NO. 301 & 302 DECK FITTED | 10 88 |
| 2 WHERE UNDER DECK FITTED | 7 88 |

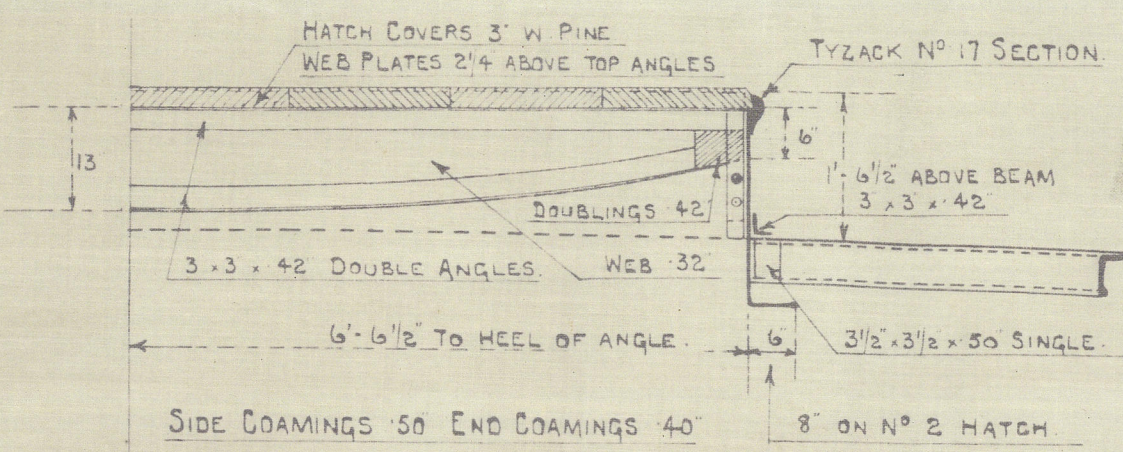
SECTION THRU HATCHWAYS

SCALE - 1/8" = 1 FOOT.

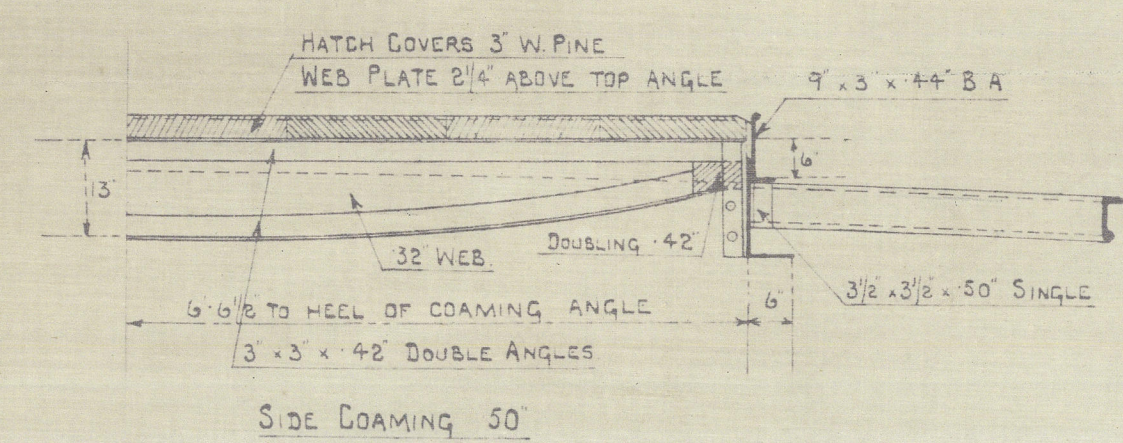
No 1, 2, 3, AND 4 SHELTER DECK HATCHES



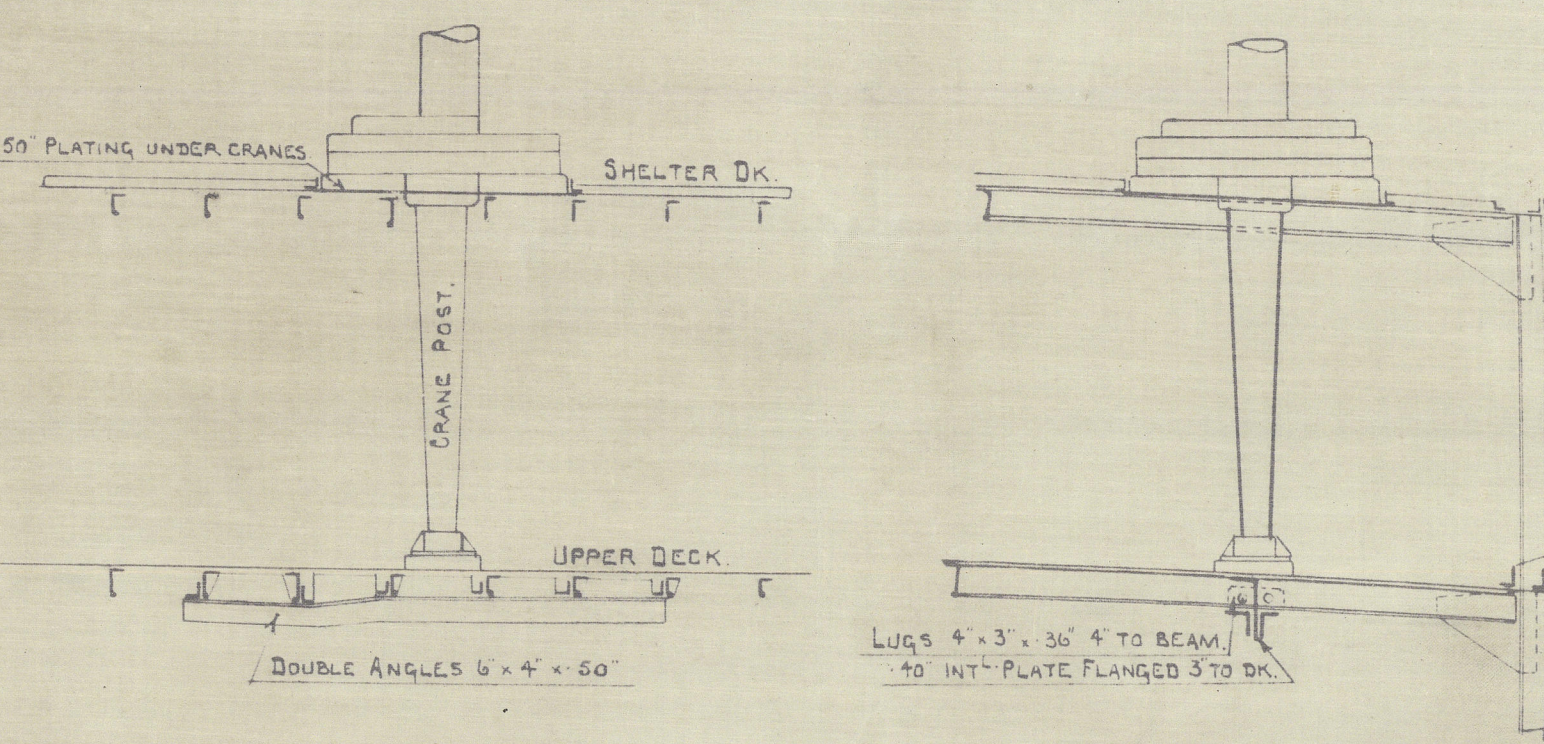
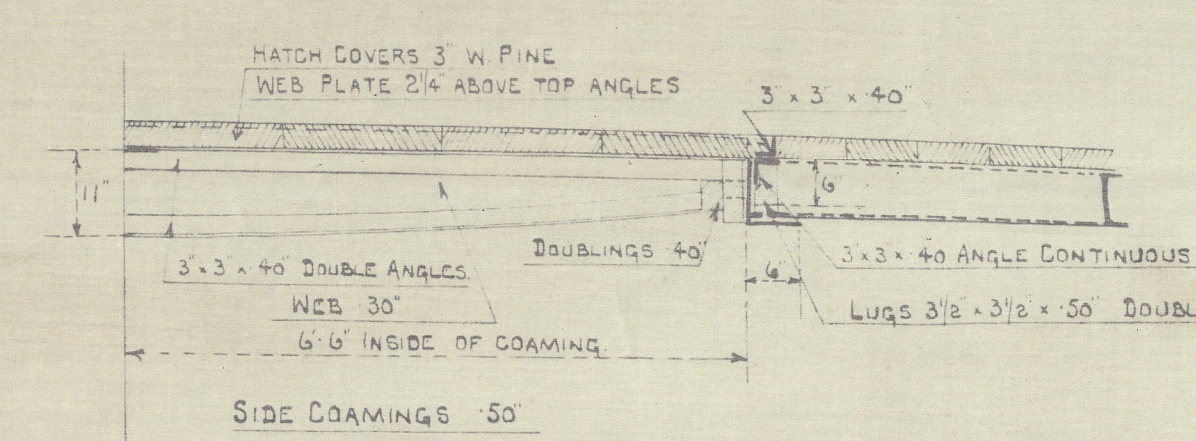
No 1, 2, AND 4 UPPER DECK HATCHES



No 3 UPPER DECK MATCH



No 1 LOWER DECK MATCH



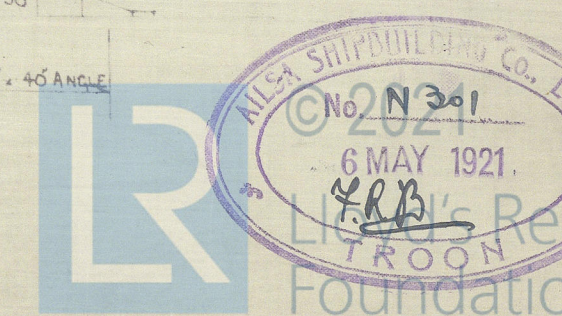
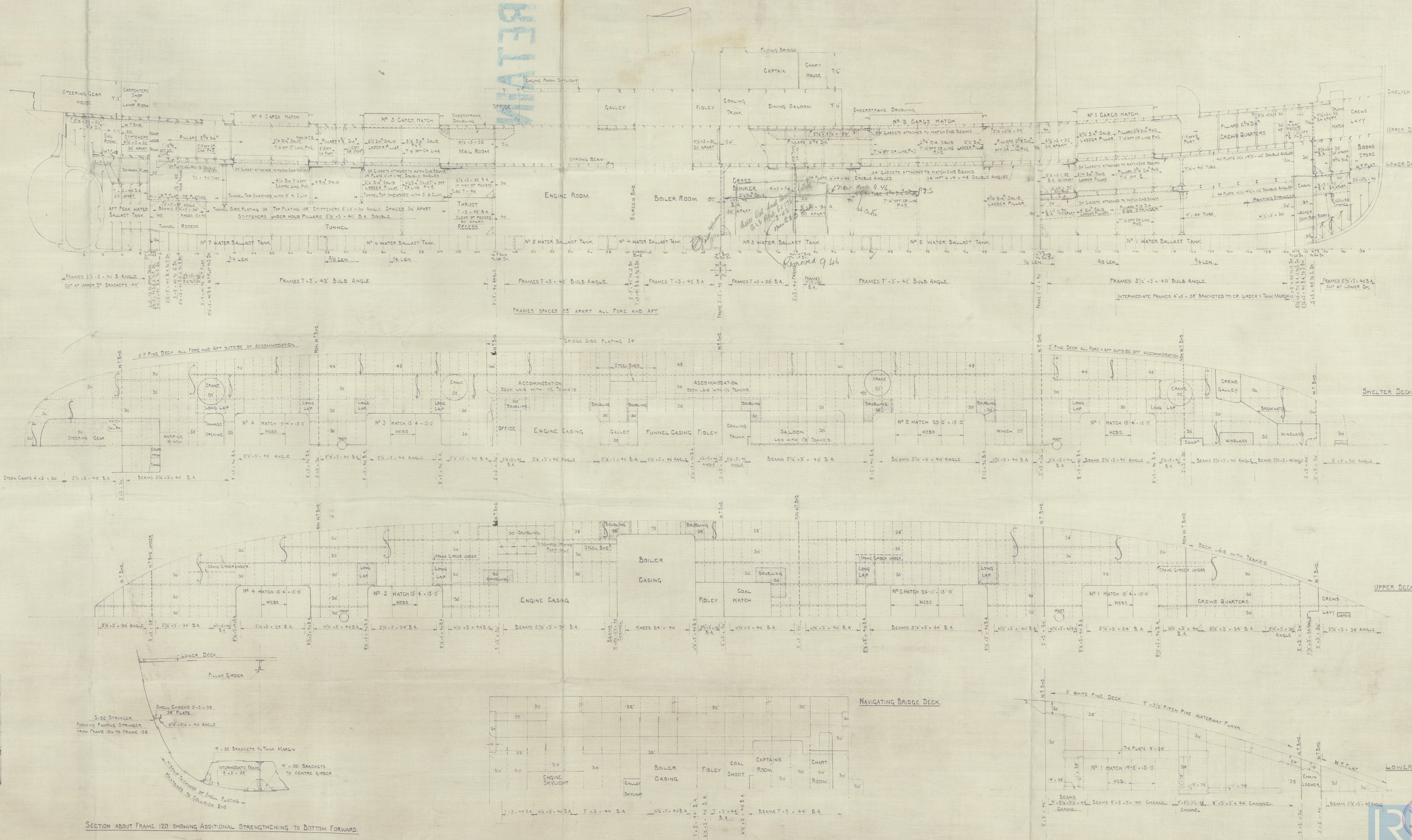
Fore & Aft Elevation

SECTION LOOKING AFT

DETAIL OF STIFFENING UNDER CRANES.

SCALE - 1/4" = 1 FT.

SECTION ABOUT FRAME 120 SHOWING ADDITIONAL STRENGTHENING TO BOTTOM FORWARD



S.S. "Haleyon"

sp. Aelia Co. No. 370

Profile. (As built)

GLASGOW REPORT No. 41409.

" n^o 2
" Zamalek "

RETAIN

Lloyds Register
Foundation

003742-003749-0155