

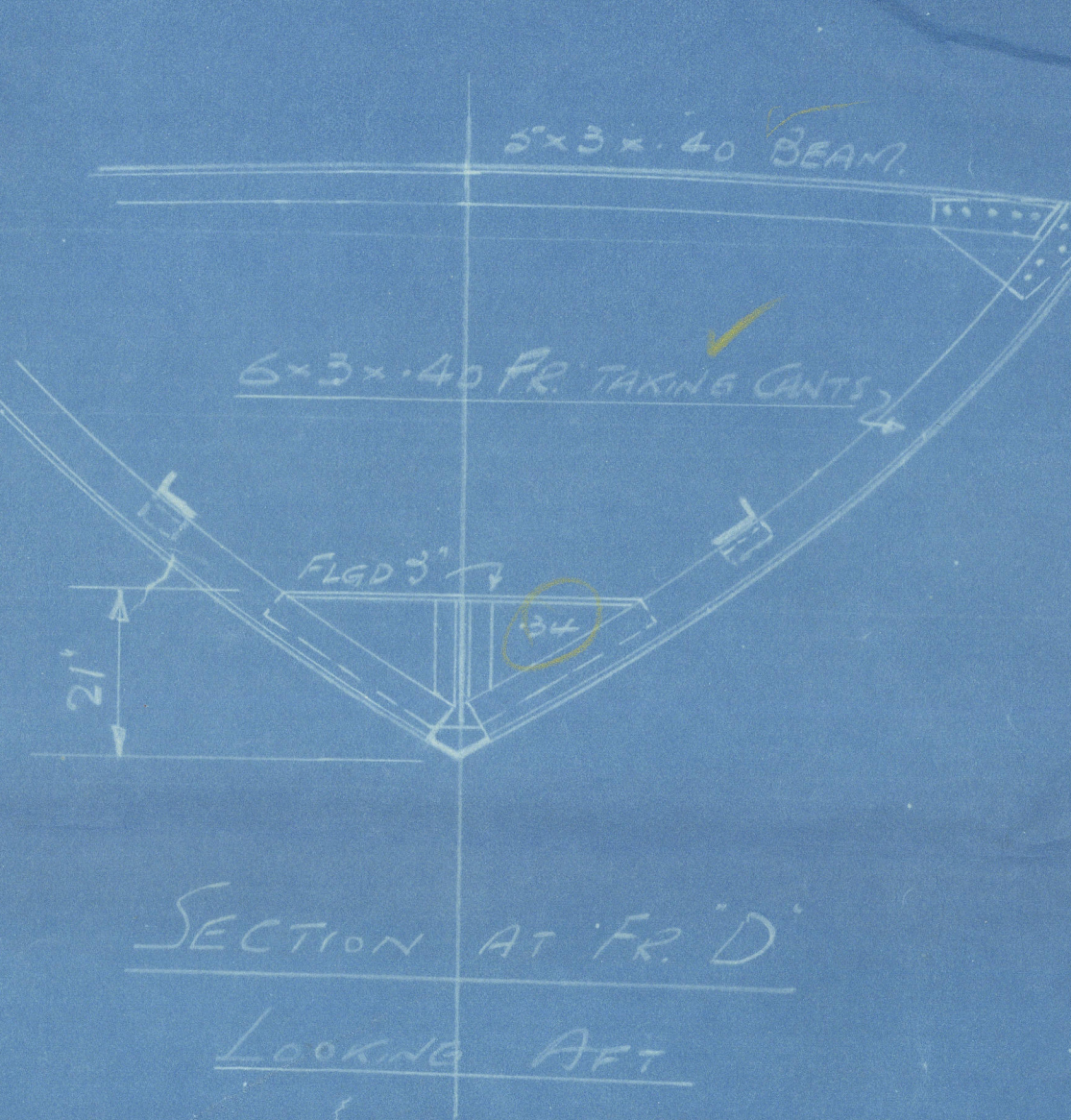
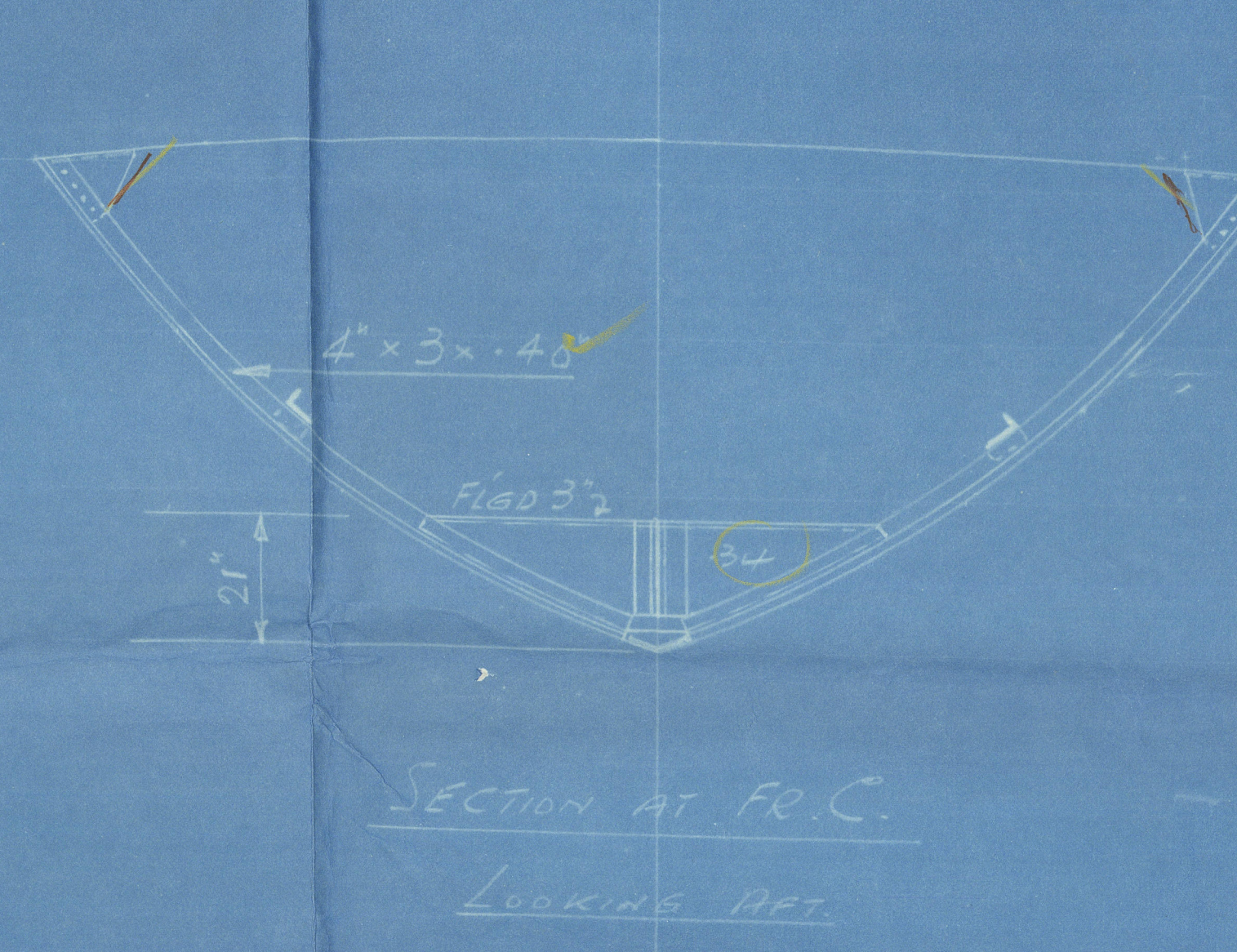
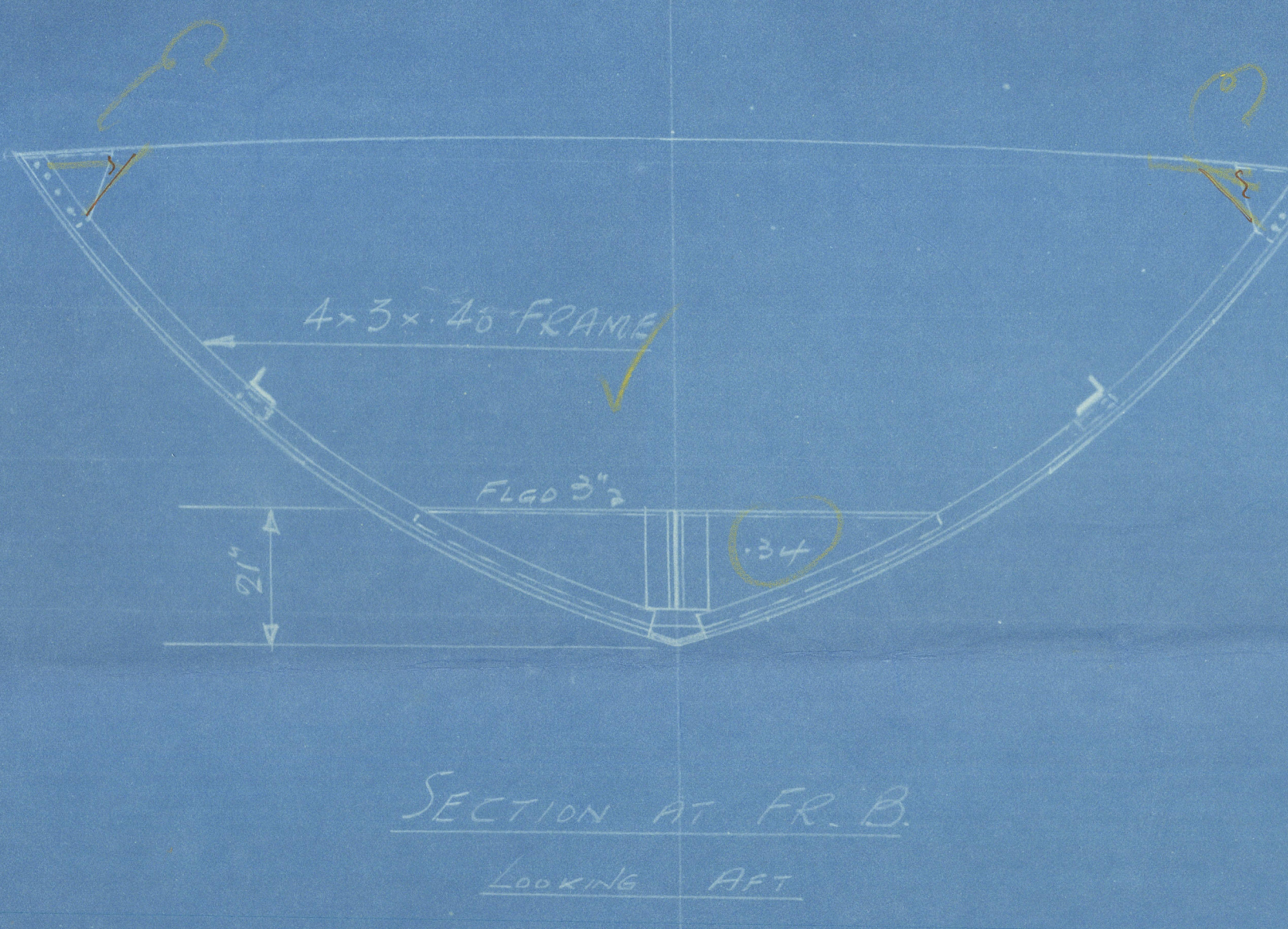
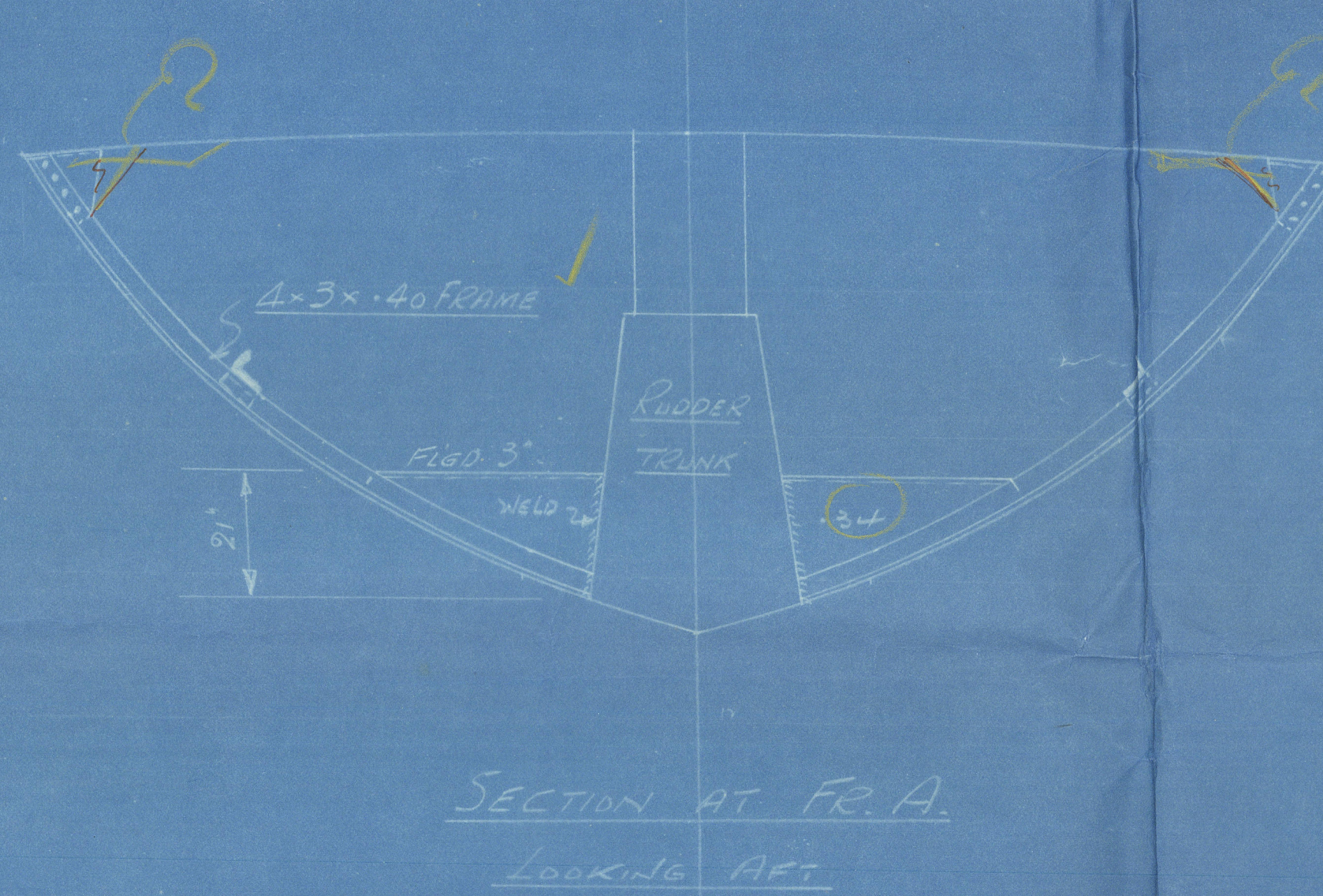
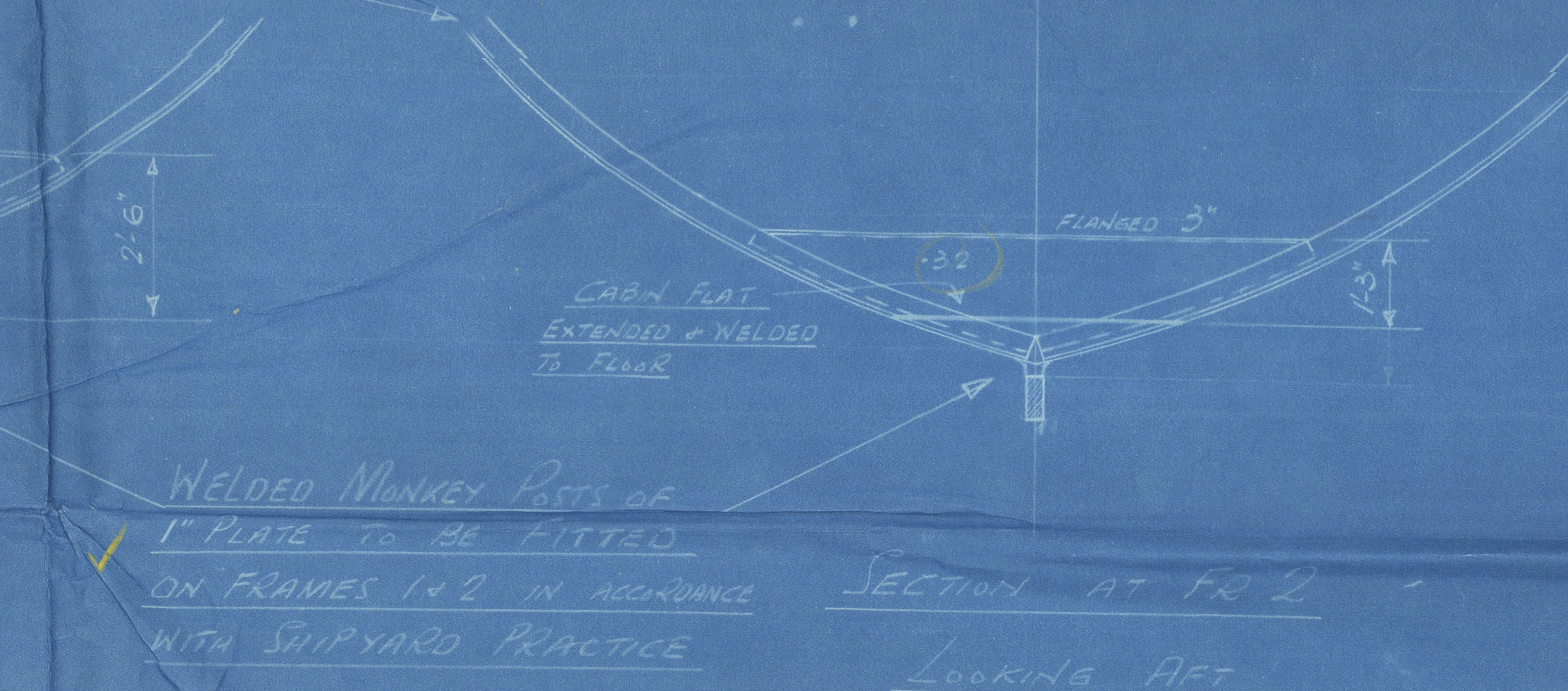
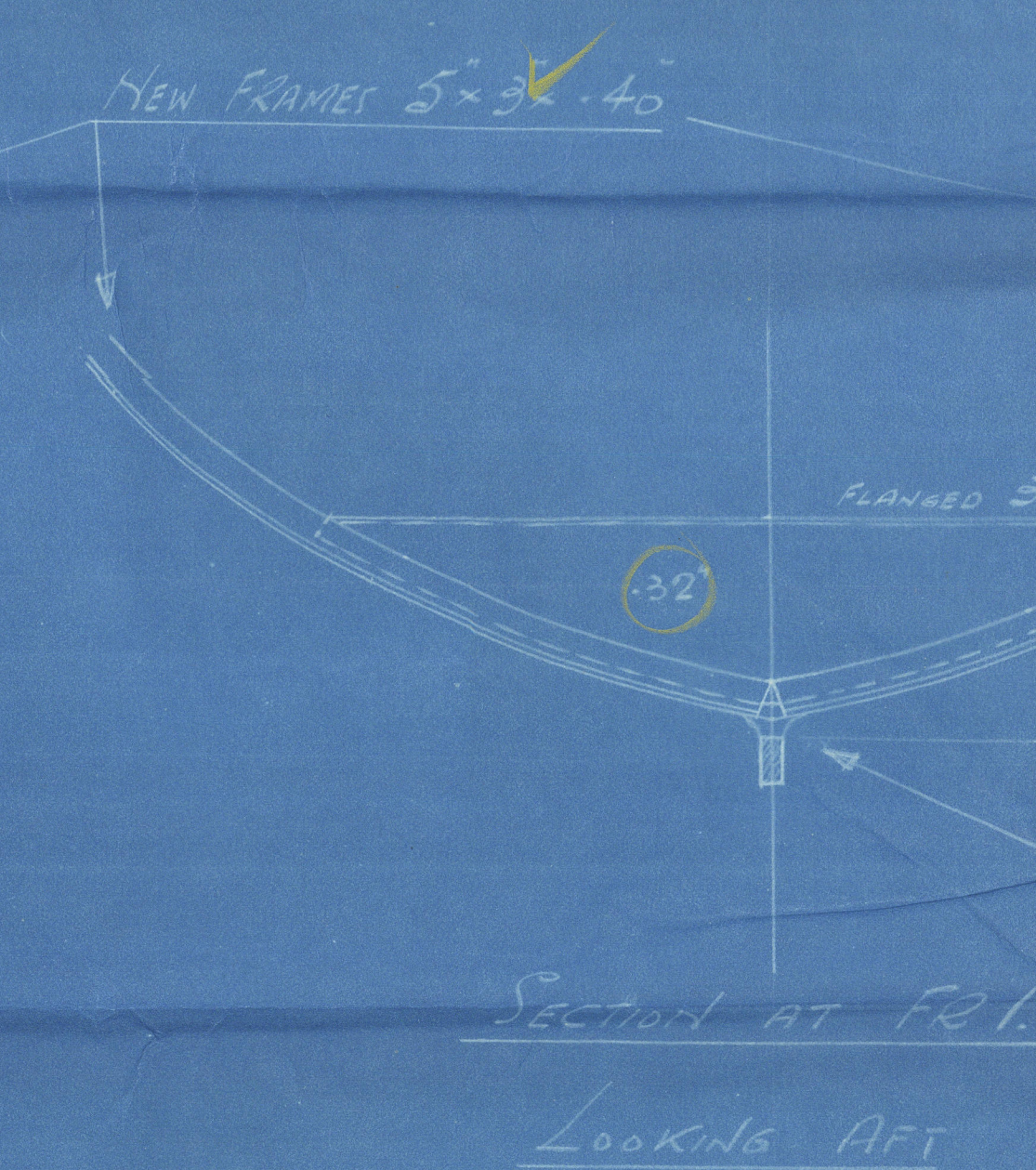
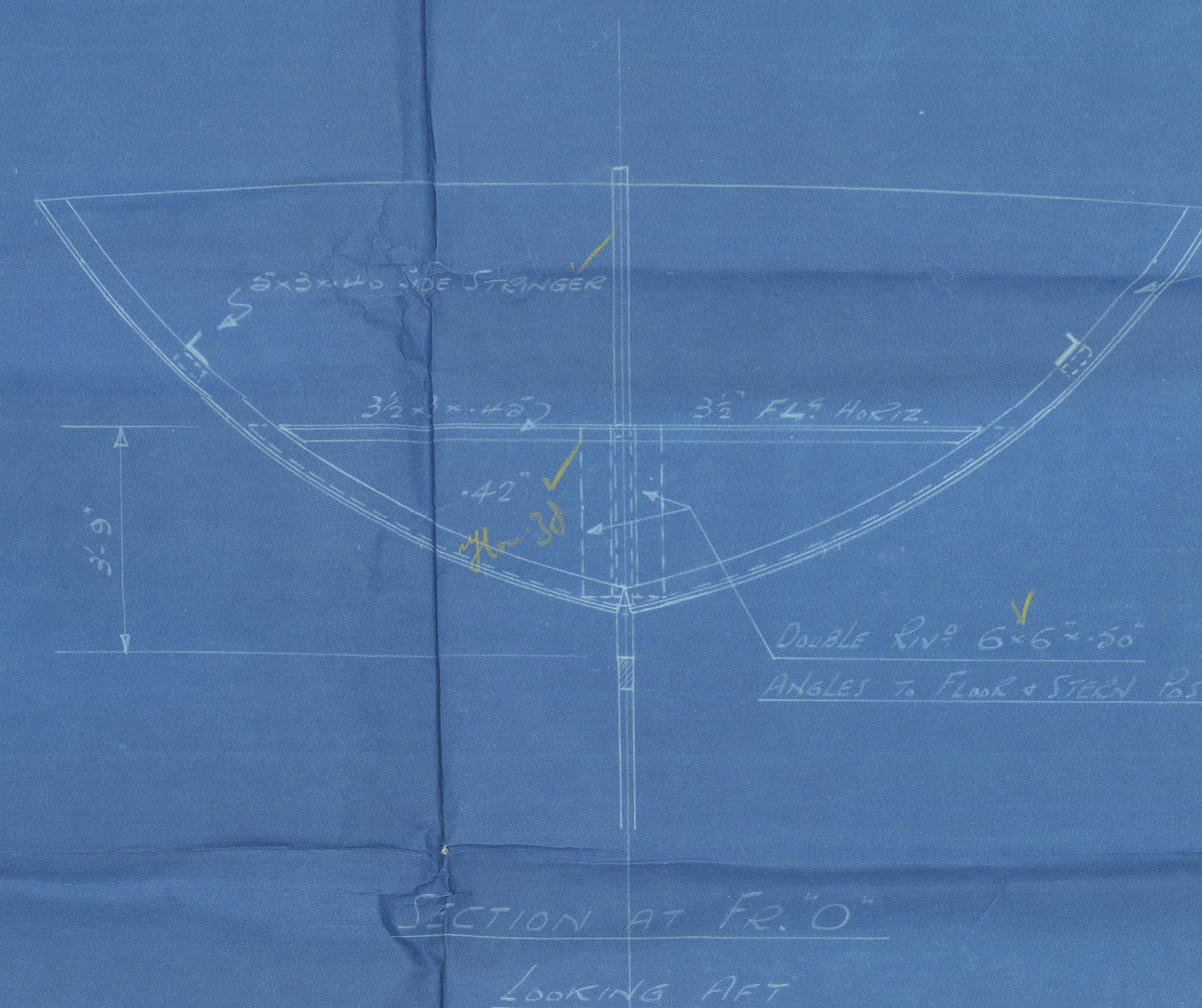
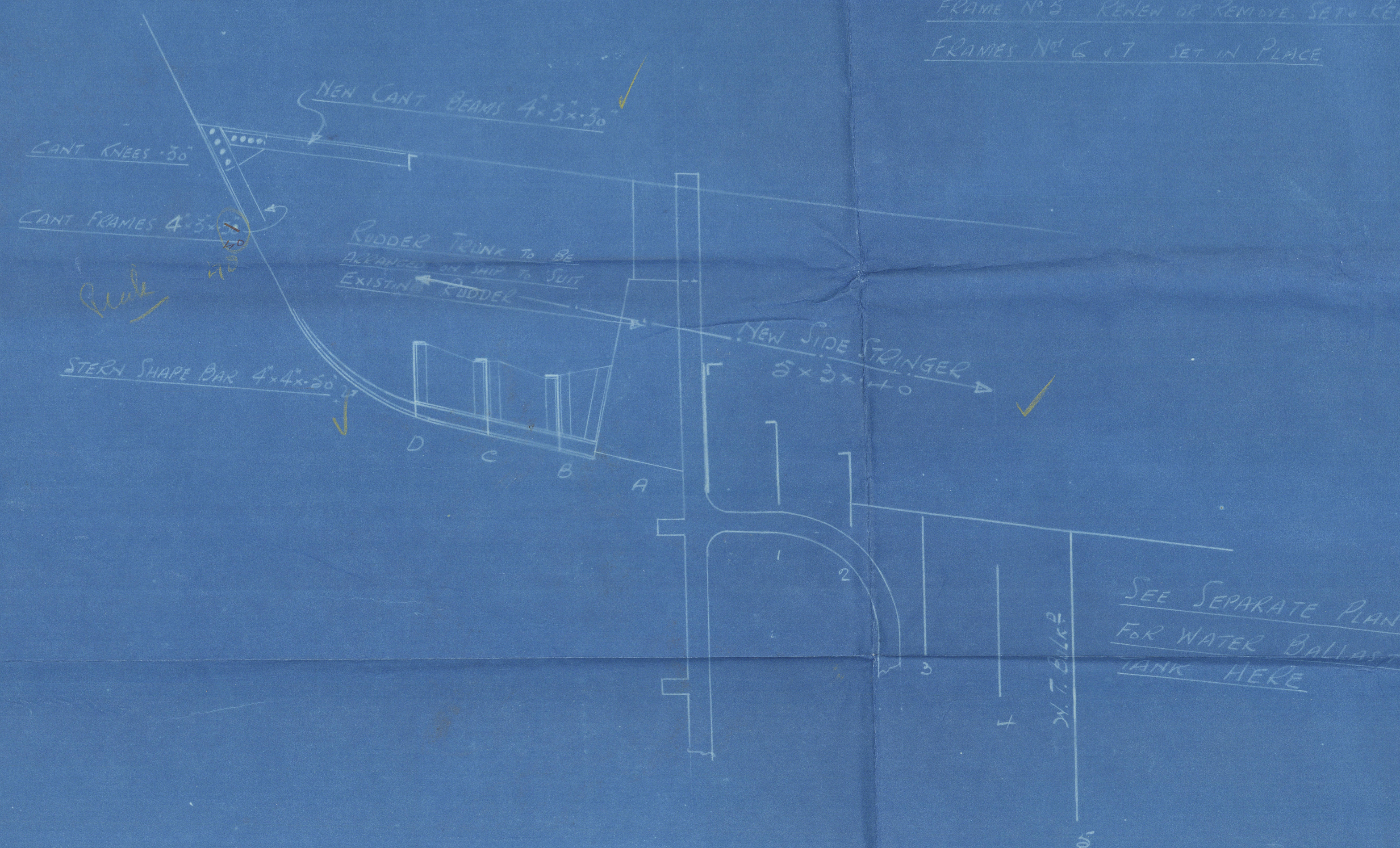
Mr

# SH "FYLDEA"

## AFTER END FRAMING

SCALE 1/2" = 1'-0"

FRAMES NO. 0, 1, 2, 3 & 4 TO RENEW  
FRAME NO. 5 RENEW OR REMOVE, SET & REPT. ALONG FLAT  
FRAMES NO. 6 & 7 SET IN PLACE





S/ FYLDEA

Att end framing

Sm. Trawler Fylden,

Mdb. rept. No 15-75-3.

after end framing.



© 2021

Lloyd's Register  
Foundation

003742-003749-0068