

1071-2-3.

N<sup>o</sup> 1045-6.

STERN & KRODER BROS  
1042-C

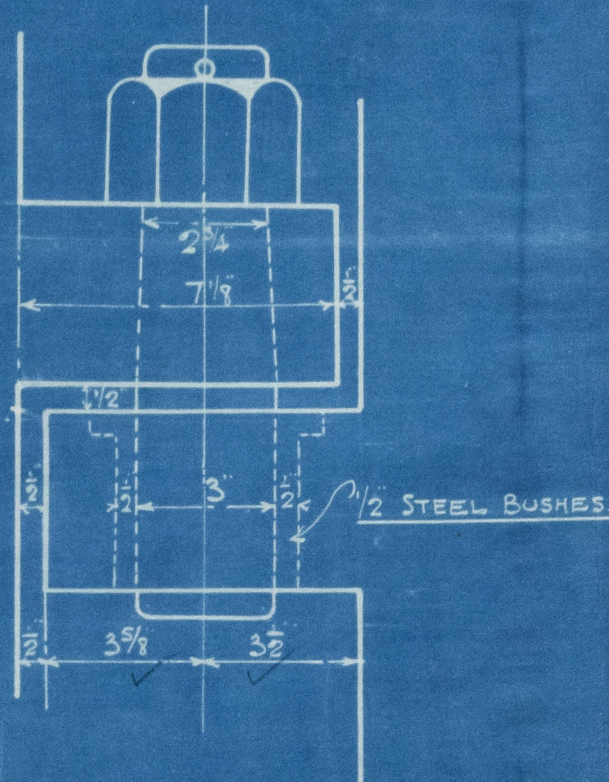
# — STERN FRAME. —

SCALE:- 1" = 1 FT

— MATERIAL:- FORGED —  
IRON.

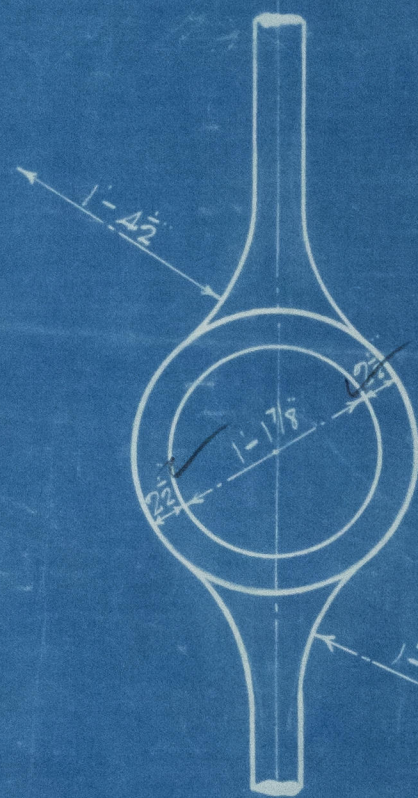
— ALL TO LLOYDS TESTS. —

— HOLES:- 1" DIAR. 5" PITCH. — ✓



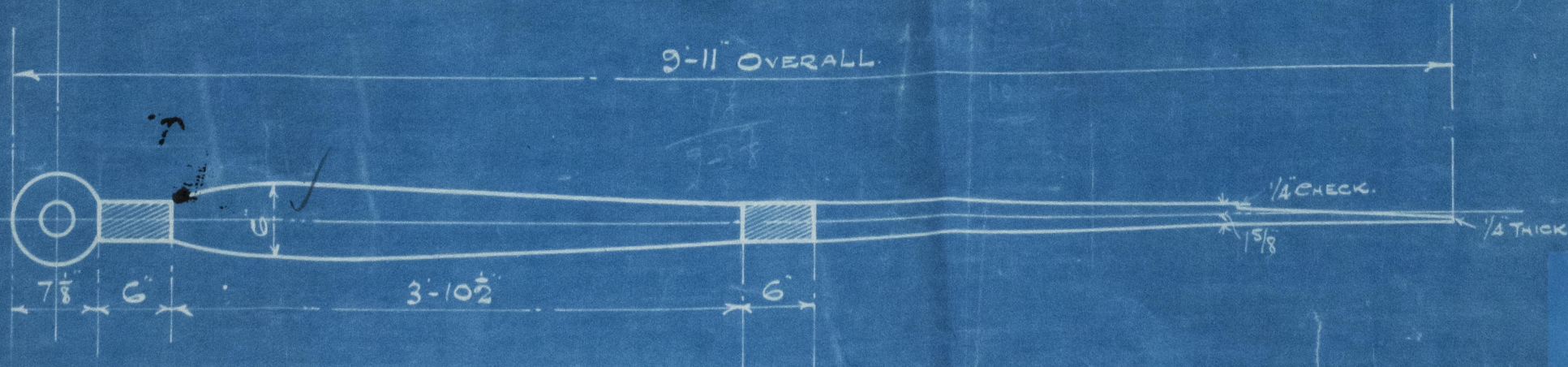
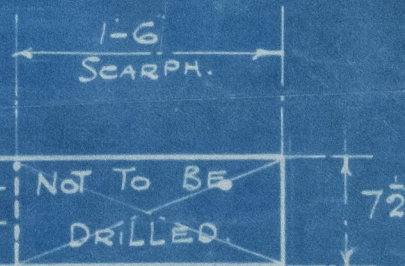
— DETAIL OF GUDGEONS & PINTLES. —  
— SCALE 3" = 1 FT —

*Rudder head not exceeding 6" in diameter*



BORE OF BOSS AND FORE  
AND AFT FACES OF BOSS  
TO BE SQUARE OFF THE  
SHAFT LINE.  
THE SHAFT DROOPS FROM  
AFT TO FORD 1/2 IN 7-0

BOSS SIDES TO BE TAPERED TO  
5/8 THICKER EACH SIDE AT FORE  
END.



19.  
24-10-29

STERN & KRODER  
1042-C



Lloyd's Register  
Foundation

003742-003749-0067



41087/8

Nos 1071-2-3

Stern Frame ~~Rudder~~

Cochranes Sons Ltd.

S.S. "Dinamar"

HULL REPORT No. 40685

S.S. "Fyldea" \*

HULL REPORT No. 40712

S.S. "Cleveland"

HULL REPORT No. 40756

S.S. "Cordelia"

HULL REPORT No. 41216

