

25-10-79

-RUDDER PLAN-

1071-2-3.

1709

SCALE 1" = 1 FT.

— SPEED NOT EXCEEDING 12 KNOTS. —

MATERIAL: FORGED IRON.

TO LLOYDS TESTS.

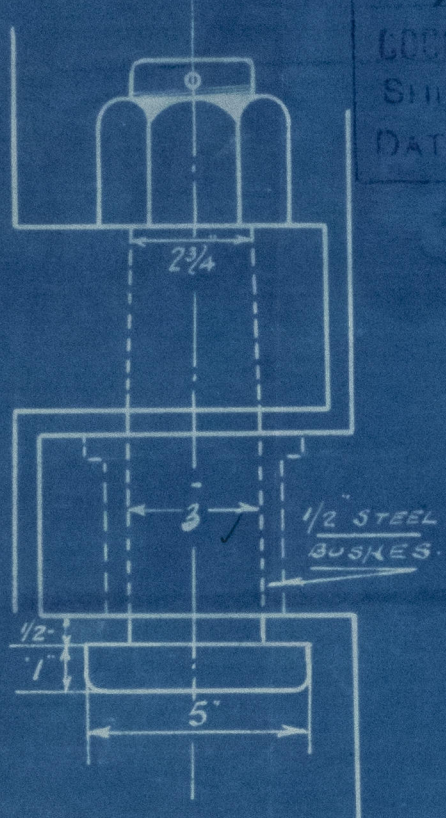
7/8" DIA. RIVETS, 5 DIA^S APART.

NO	ORDS.	S. N.	FUNCTIONS FOR C.A.	ORDS.	S. N.	FUNCTIONS FOR C.B.
0	31	1/2	.45	.82	1/2	.4
1/2	2 23	2	4 58	5 24	2	10 48
1	3 12	1 1/2	4 68	9 73	1 1/2	14 53
2	3 37	4	15 48	14 97	4	53 88
3	4 00	2	8 00	16 00	2	32 00
4	3 35	4	15 40	14 82	4	53 28
5	3 10	1 1/2	4 65	9 61	1 1/2	14 41
5 1/2	2 23	2	4 58	5 24	2	10 48
6		1/2			1/2	

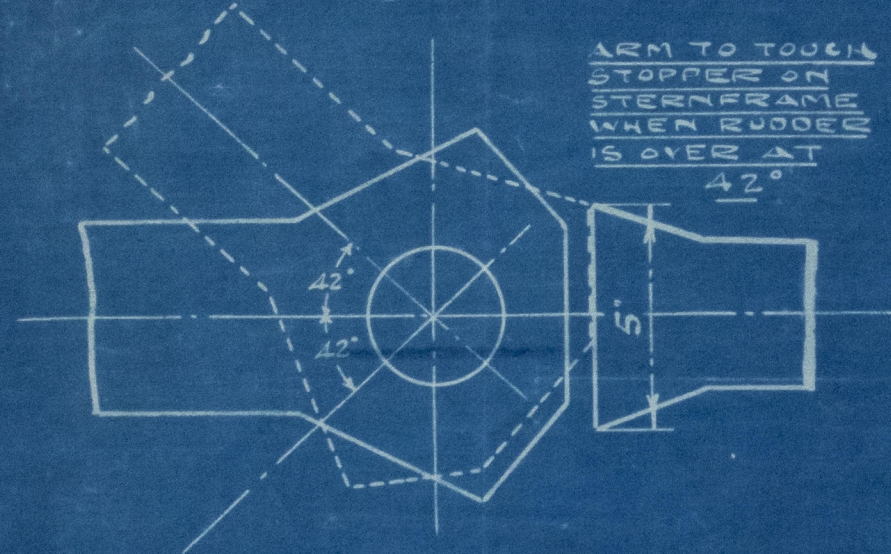
57-82 201-53

$$\text{AREA} = \frac{57.82 \times 2.07}{3} = \underline{39.896}$$

$$A \times D = \underline{\underline{82.97}}$$



DETAIL OF PINTLE IN TOP GUDGEON
SCALE: 3" = 1 FT.



DETAIL OF STOPPER ON TOP GUDGEON
SCALE. 3" = 1. FT.

NOTE :- THE UPPER & LOWER SURFACES OF
GUONGRONS TO BE SQUARE TO POST
& DEAD LEVEL SO THAT PINTLE NUTS
WILL BEAR TRUE ON SAME.


OVERALL LENGTH: 21'-4½"

41087/8
Nos. 1071-2-3.
Rudder Plan
Cochrane & Sons. Ltd.



S.S. "Dinamar"

HULL REPORT NO. 40485

S.S. "Fyldea" 

HULL REPORT NO. 40712.

S.S. "Clevela"

HULL REPORT NO. 40756

S.S. "Cordela"

HULL REPORT NO. 41216