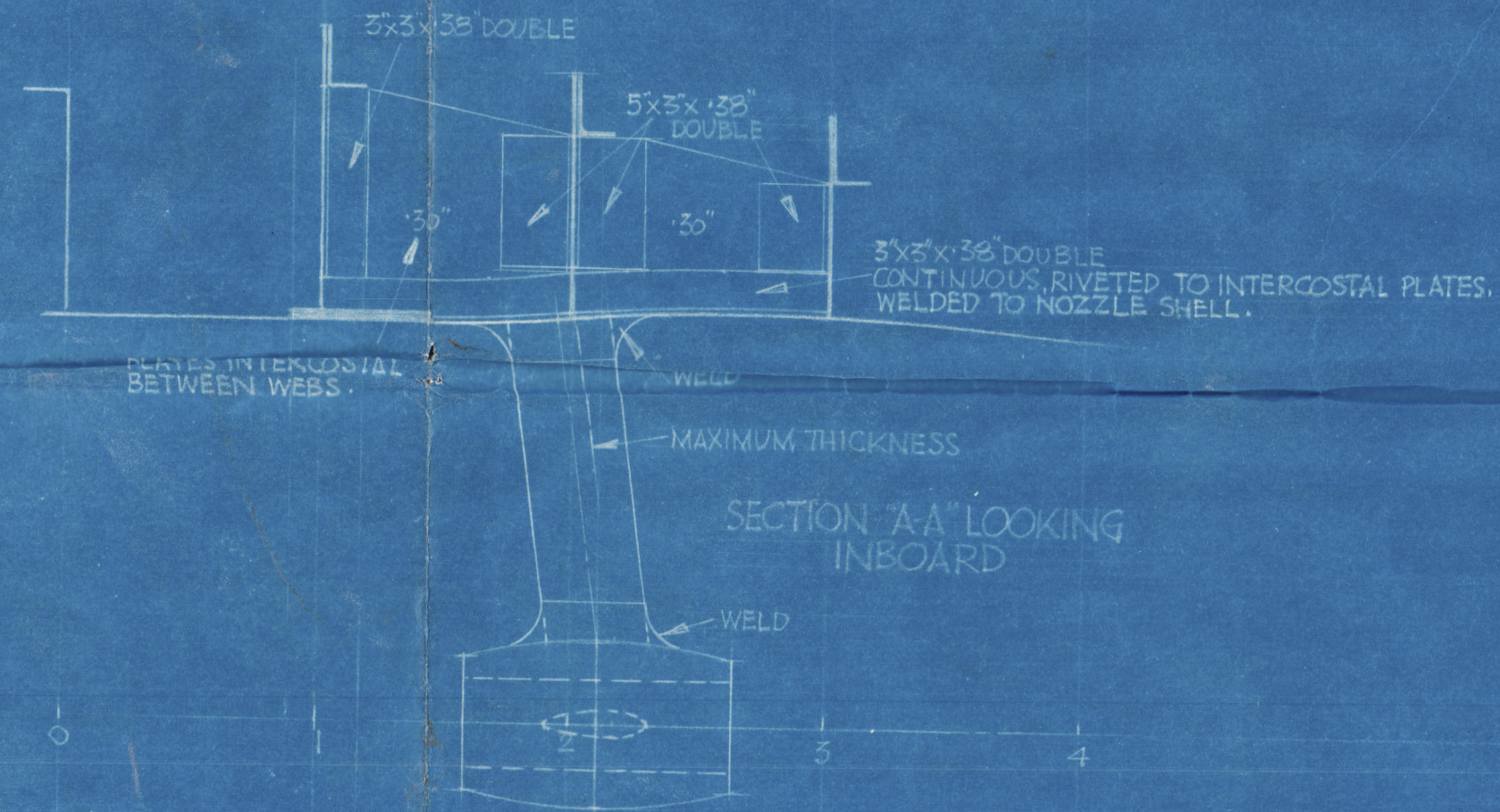
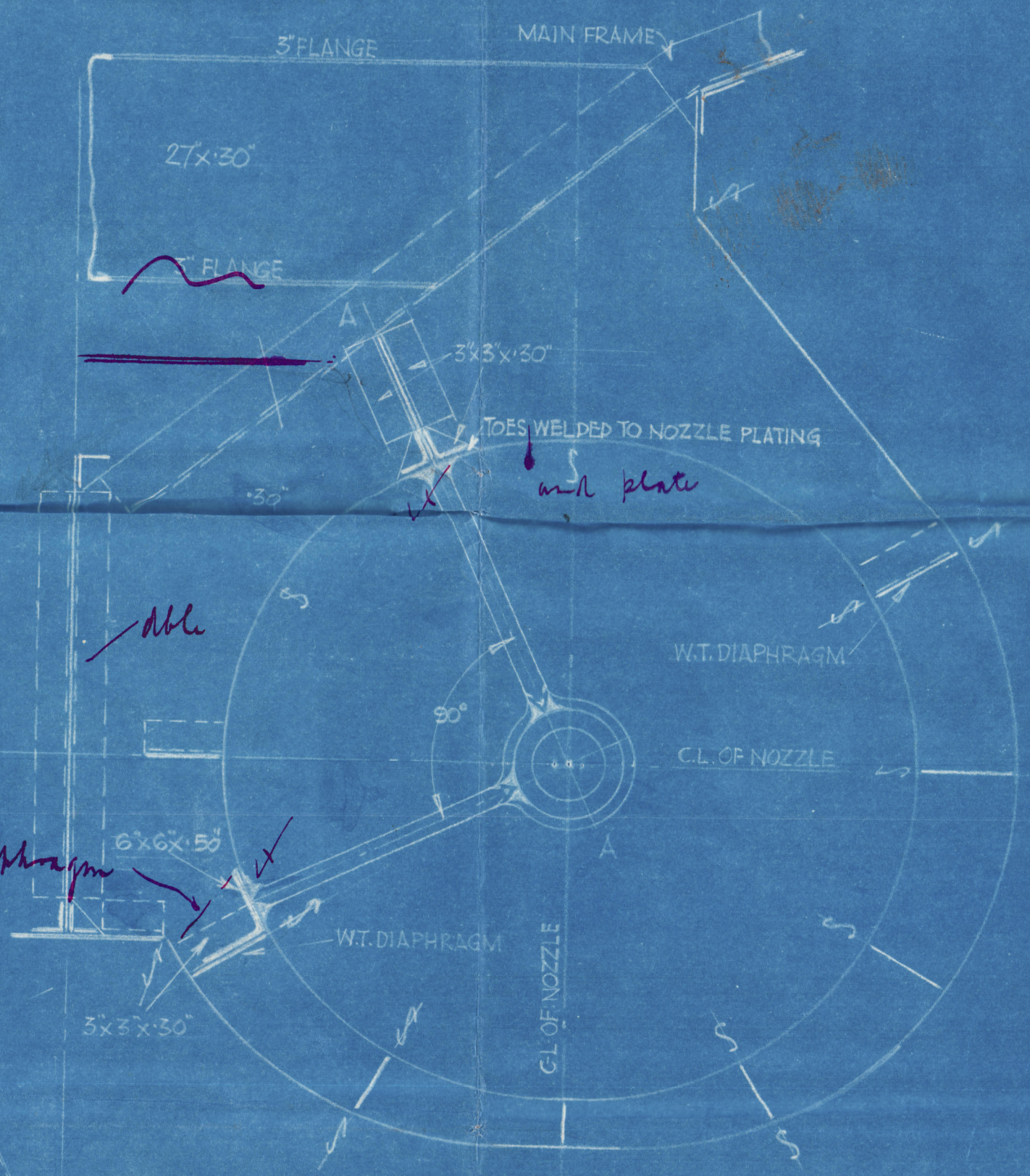
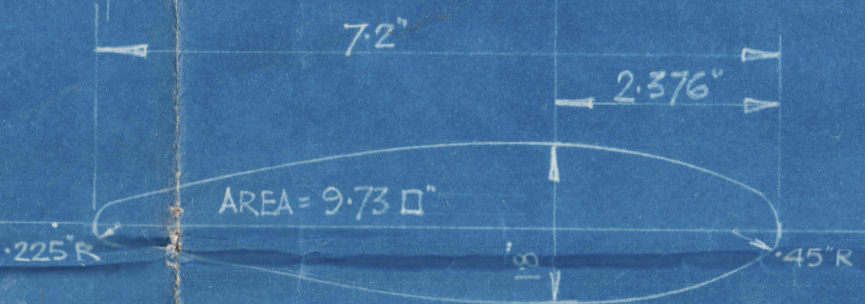
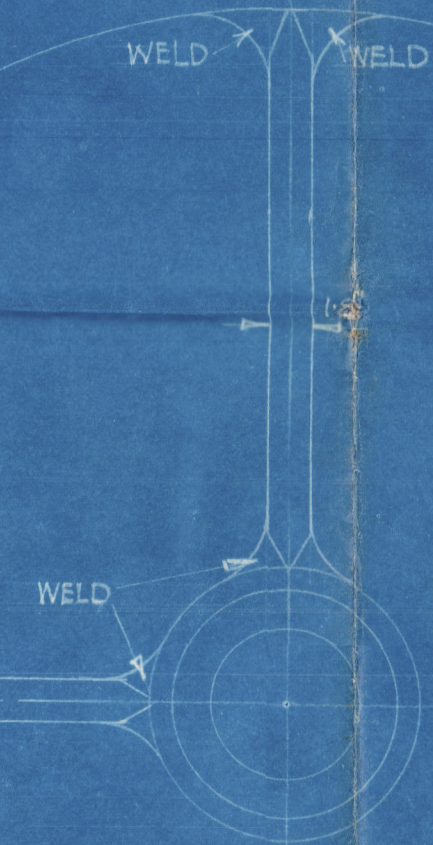
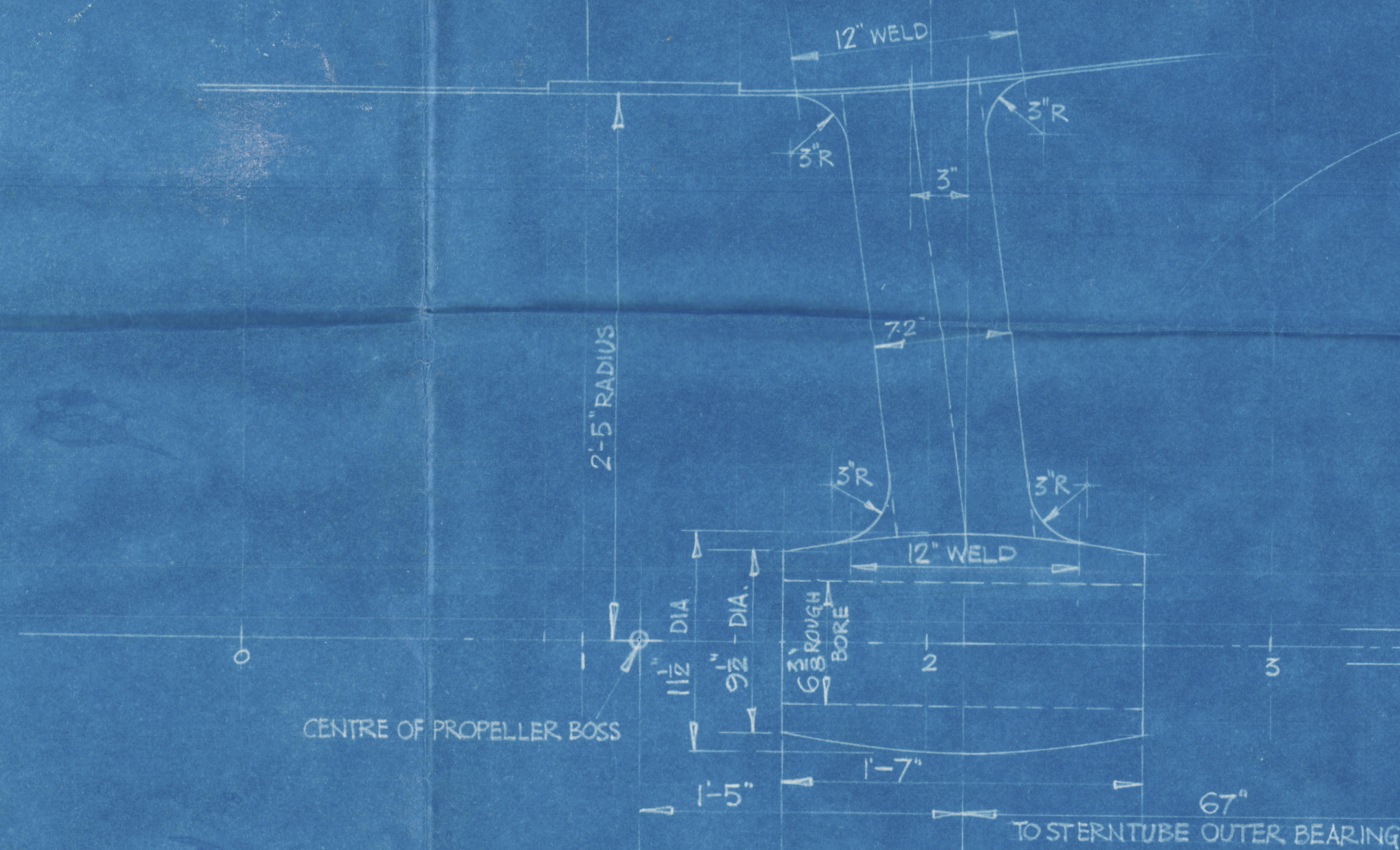
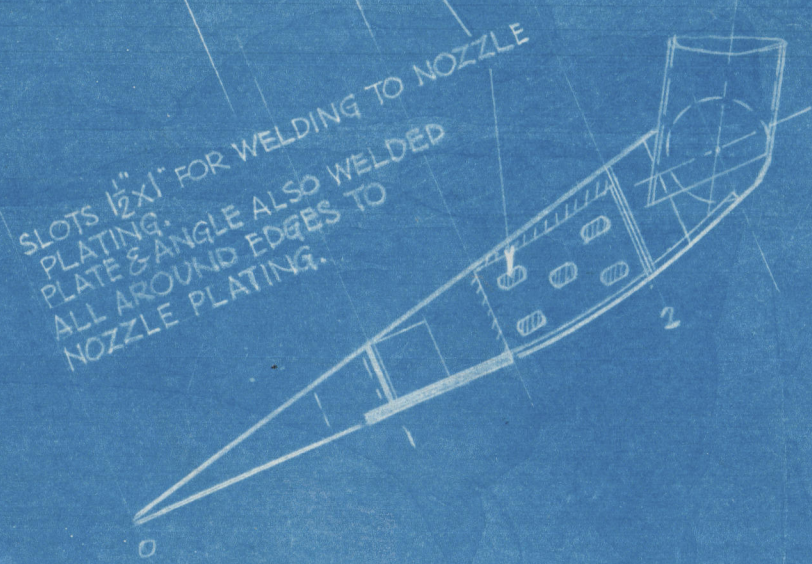


31.10.26



BOSS & ARMS OF LLOYDS' TESTED MILD STEEL 28/32 TONS TENSILE.  
 ARMS ELECTRICALLY WELDED TO BOSS & NOZZLE PLATING.  
 REVOLUTIONS PER MINUTE = 160  
 H.P. EACH ENGINE = 90  
 KORT NOZZLE PLATING APPROVED BY LLOYDS 22-3-36



*special care to be taken that the plates and angles are in close contact*  
*Par 7 electrodes to be used*

L.N.E.R. TWIN-SCREW TUG [MESSRS. RD DUNSTON'S NO. 289]  
 "A"-BRACKETS IN KORT NOZZLES  
 STARBD. SIDE AS DRAWN, PORT SIDE TO OPPOSITE HAND.  
 SCALES: 1" & 1/2" = ONE FOOT.

*31.10.26*

003127-003133-0084



*Dunston 289*

*Kort Nozzle*

S.S. *"No. Paint"*

HULL REPORT No. *47905*



© 2021

Lloyd's Register  
Foundation

003727-003733-0024