



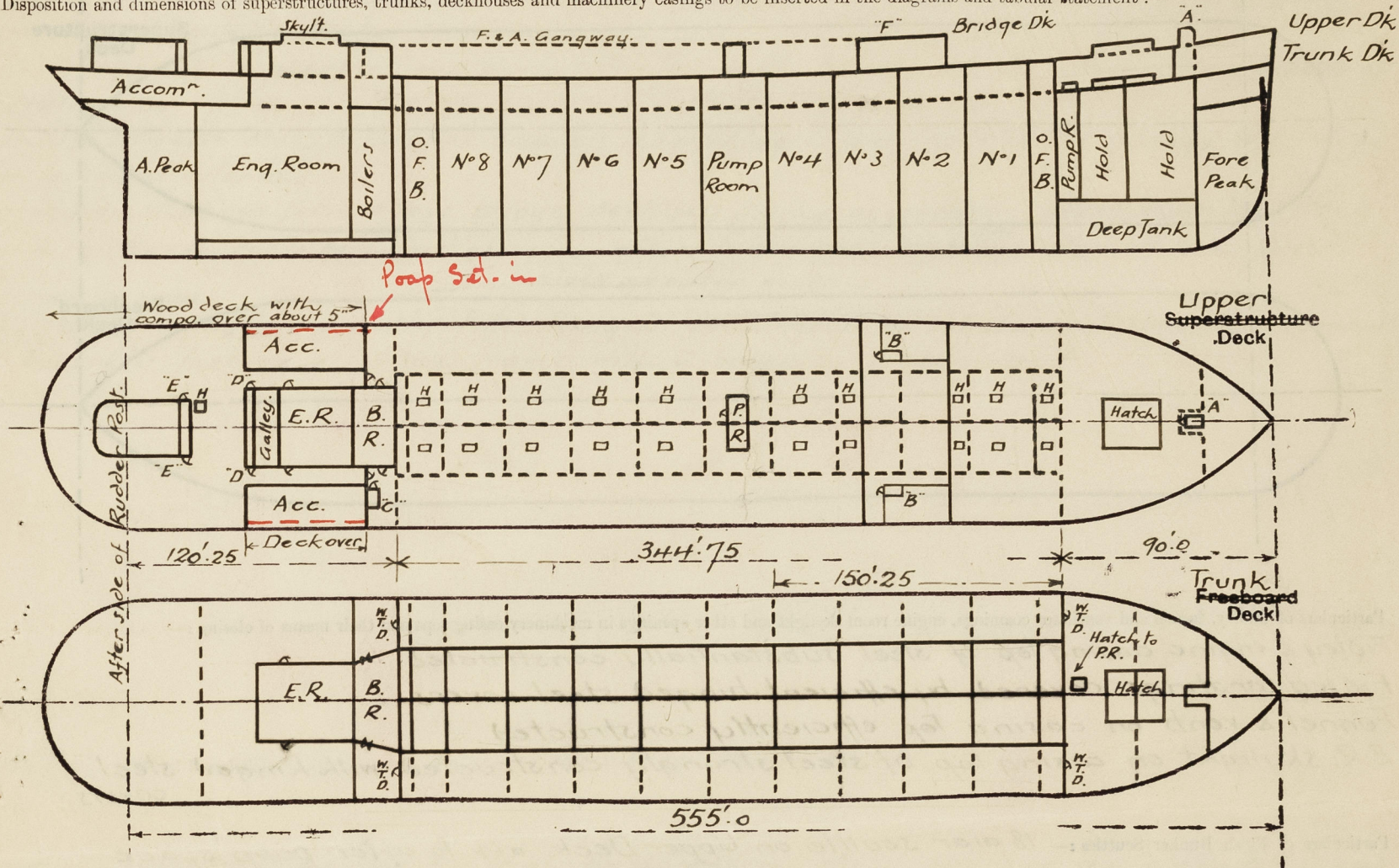
# Lloyd's Register of Shipping.

## SURVEYS FOR FREEBOARD.

### (CONDITIONS OF ASSIGNMENT.)

Ship's Name "ESJO LIVERPOOL" Port of Survey NEWCASTLE-ON-TYNE  
 Official Number 193276 Surveyor's Signature W. Robinson  
 Nationality and Port of Registry BRITISH, LONDON. Date of Survey During Classification Survey.

Disposition and dimensions of superstructures, trunks, deckhouses and machinery casings to be inserted in the diagrams and tabular statement:—



Particulars of Superstructures, Trunks, Casings, Deckhouses.

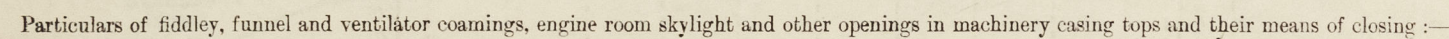
	Coaming	Plating	Stiffeners	Spacing	End Attachments of Stiffeners	Size of Openings	Height of Sills	Height of Casings
Poop Bulkhead on Trunk Deck ...	✓	.38	6 x 3 1/2 x .38	30" to 36"	Brackets top & bottom	2- 5-6 x 30"	9"	at side 9' 0"
Raised Quarter Deck Bulkhead ...	✓	.38	4 x 3 x .40	28 1/2"	Brackets top & bottom	2- 4-3 x 24"	24"	7' 6"
Bridge, After Bulkhead on Upper Dk	✓	.38	10 x 3 1/2 x .40	28 1/2"	Brackets top & bottom	2- 4-3 x 24"	24"	7' 6"
Bridge, Forward Bulkhead ... do ...	✓	.38	6 x 3 1/2 x .38	30" to 36"	Brackets top & bottom	2- 5-6 x 30"	9"	at side 9' 0"
Forecastle Bulkhead on Trunk Dk	✓	.38	4 x 3 x .40	24"	none top only - altern. bkt's at front	2- 5-0 x 24" to Br.C. 6"	24"	9' 0"
Trunk, Aft ...	✓	.38	6 x 3 1/2 x .38	12"	lugs side	2- 4-3 x 24"	24"	8' 3"
Trunk, Forward ...	✓	.38	4 x 3 x .40	24"	Brackets at top	2- 5-0 x 24"	10"	8' 3"
Exposed Machinery Casings on Freeboard or Raised Quarter Deck ...	✓	.38	4 x 3 x .40	30"	none	1- 4-3 x 24"	24"	7' 6"
Exposed Machinery Casings on Superstructure Decks ...	✓	.38	6 x 3 1/2 x .38	12"	altern. bkt's at front	2- 4-3 x 24"	24"	8' 3"
Machinery Casings within Superstructures not fitted with Class I Closing Appliances aft of Upper Poop Front	✓	.38	4 x 3 x .40	24"	Brackets at top	2- 5-0 x 24"	10"	8' 3"
Pump Room Upper	✓	.32	4 x 3 x .40	30"	none	1- 4-3 x 24"	24"	7' 6"
Deckhouses on Flush Deck Ships ...	✓	.40	4 x 3 x .40	30"	none	1- 4-3 x 24"	24"	7' 6"

Particulars of Closing Appliances (state if capable of being manipulated from both sides).

Poop Bulkhead on Trunk Deck ...	Hinged steel W.T. door (p.s.) operated from both sides. <i>permanently closed.</i>
Raised Quarter Deck Bulkhead ...	✓
Bridge, After Bulkhead on Upper Dk	Hinged steel W.T. door (p.s.) operated from both sides. Opening closed by portable steel plate with hook bolts (p.s.)
Bridge, Forward Bulkhead on U.Dk	Hinged steel W.T. door (p.s.) operated from both sides.
Forecastle Bulkhead on Trunk Dk	Hinged steel W.T. door (p.s.) operated from both sides. <i>Permanently closed</i>
Exposed Machinery Casings on Freeboard or Raised Quarter Deck ...	Opening to Boiler Room (p.s.)
Exposed Machinery Casings on Superstructure Decks ...	Hinged steel door (p.s.) to Engine Room operated from both sides.
Machinery Casings within Superstructures not fitted with Class I Closing Appliances aft of Upper Poop Front	Hinged steel W.T. door (p.s.) operated from both sides.
Pump Room Upper	Hinged steel W.T. door (p.s.) operated from both sides.
Deckhouses on Flush Deck Ships ...	Hinged steel W.T. door operated from both sides.



The following diagrams should be used to indicate the positions of cargo and coaling hatchways, gangway, cargo and coaling ports, ventilators, companionways, etc., which would affect the seaworthiness of the ship:—

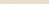


Fidler & engine casing top of steel substantially constructed.   
 Fidler gratings covered by efficient hinged steel covers.   
 Funnel & vents on casing top efficiently constructed.   
 E.R. skylight on casing top of steel strongly constructed with hinged steel covers.

Particulars of Flush Bunker Scuttles:— 18" diar scuttle on Upper Deck aft to after poop space

PARTICULARS OF COMPANIONWAYS: ~ (A\*) on Upper Deck forward = steel 5'-0" x 3'-0" x 6'-6" high  $\Delta$  fitted with hinged steel W.T. door 3'-9" x 24" with 24" sill. filled with keel chain (no fastenings).

(B) on Upper Dk inside bridge erection (to trunk dk) (prs.) steel, fitted with hinged steel W.T. door 5'-0" x 24" with 12" sill. )

(C) on Upper Deck forward of upper poop front (s.s.) steel 5'-0" x 3'-0" x 6'-6" high  fitted with hinged steel W.T. door 4'-0" x 2'-4" with 2'-4" sill. ↓

(“E”) on Upper Dk at fore end of steering house (prs.) with hinged steel W.T. door 4'-0" x 2'-4" with 2'-4" sill.

Particulars of Ventilators in exposed positions on freckboard and superstructure decks:—(F) on Bridge Dk to bridge tween decks & trunk deck (S.S.) steel with hinged steel W.T. door 4'6" x 24" with 12" sill. ↓

Companionways substantially constructed & doors operated from both sides. }

PARTICULARS OF VENTILATORS ON UPPER DECK:-

1- 18" dia. x 36" x 40 hinged steel W.T. cover. Store fwd. 1 5- 12" dia. x 36" x 40 hinged steel W.T. cover T.D's

4-18 " " " " Hold & T.Dk. \$ 1 - 7 1/2" G.N. x 42" T.Dk. (marked)

4 12" " " " Pump R. & Trunk Dkfwg. 1 - 24" diam x 54" x 40 cowl (bracketed)

2 18" " " " Pump R. amid J. 1-24" x 10-0" x 40 " efficiently stayed

2 12" - " " " Trunk Dk aft. ↓ 2-8" " x 6.3" x .36 with fixed tops (omitted)

2 10 - " " Coffin . J

1 24 - " " " Pump R. aft. & Wood plugs & canvas covers for coil vents

1 10" " " " " T. Dk. ✓ 8 canvas covers for fixed tops. ✓

2 15" - x 10' 0" x .40 cowl T. DK aft of Prop. & efficiently stayed. ✓

Particulars of Air Pipes in exposed positions on freeboard, raised quarter, or superstructure decks :—

1-4" diam x 16" high to Fore Peak. ✓

2.4" x 48" .. Deep Tanks fwd

1. 3" .. 16" .. A. Peak

1 - 7 1/4"      30"      " after Accommodation

Air pipes supplied with canvas covers.

(Air papers from DB tanks situated entirely within machine spaces).

Particulars of Gangway Cargo and Coaling Ports:— *NONE.*

Esso Liverpool.

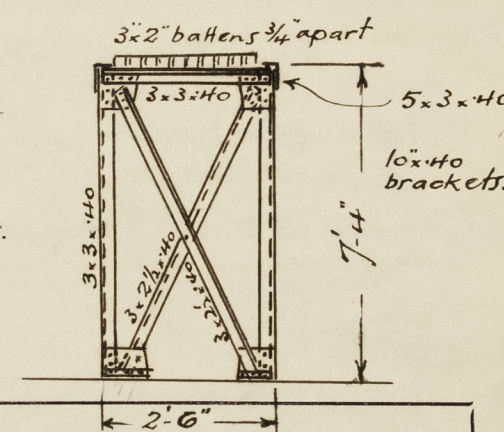
Particulars of Scuppers and Sanitary Discharge Pipes:— 11- 6x2" oval scuppers (prs) through gunwale bar. (Upper Dk) ✓  
✓ 4- 2" scuppers (prs) from Upper Deck abreast poophouse led overboard below Trunk Dk but  
above L.W.L. with storm valves at outer ends. 1- 3" scupper (prs) forward of bridge led overboard  
✓ above Trunk Dk with storm valve at outer end. ✓  
✓ 1- 2" scupper (prs) in bridge space led overboard above Trunk Dk with storm valve at outer end. ✓  
✓ Fcle spaces - scuppers led overboard below Trunk Dk but above L.W.L. thro 3 pipes (1pr 2s) with  
storm valves at outer ends. ✓  
Trunk Alleyway - scuppers led overboard below Trunk Dk but above L.W.L. through 3 pipes (prs)  
with open ends. *fitted with valve operable from above Upper Deck "open - shut" indicator fitted.*  
Poophouse & tween decks below (prs) - scuppers led overboard below Trunk Dk but above L.W.L. with  
storm valves at outer end. ✓  
Sanitary discharges from above bridge deck (prs) discharge overboard above Trunk Dk & from  
✓ poophouse & tween decks below (prs) above Trunk Dk or below Trunk Dk <sup>above</sup> below L.W.L., all with storm  
valves at outer ends. ✓

Particulars of Side Scuttles:—

12 sidelights with permanently fitted hinged deadlights of substantial construction with 2 butterfly fastenings. Glass frame with 2 butterfly fastenings.


Vertical distance of Sill of lowest Side Scuttle above top of keel *all above Trunk Deck*

Particulars of Guard Rails:— Bulwarks 3'-6" high for 40'-0" from stem, bracket stays about 8'-0" apart. Stier rails elsewhere 3'-6" high, stanchions 4'-9" apart with bulwarks 7'-0" long at fore & after ends of bridge.



Particulars of Gangways, Lifelines, etc.:—Gangway from Casing Top to Bridge End. Supports 11'-9" apart

with fore & aft 40 brackets. 2 tier rails 3'-3" high.



3 x 3 x 40 cross ties.

Particulars of Freeing Arrangements.						2' 6"
	Length of Bulwark	Height of Bulwark	Size of Freeing Ports	Number each side	Area each side	Rule area each side
After Well ... ..						
Forward Well ... ..						

State position of each freeing port ... .. { After Well :—  
(F. and A. position and height above deck edge) { Forward Well :—

State whether the freeing ports are fitted with shutters, bars, or rails, and give particulars of such :—

Additional area where sheer is less than standard.

~~If freeing port in Trunk Deck alleyway 2' 6" x 15" with hinged steel cover.  
6" from lower edge to deck. (blanketed off).~~

© 2020  
Lloyd's Re



PARTICULARS OF PROTECTION TO OPENINGS, ETC.

HATCHWAYS ON FREEBOARD AND SUPERSTRUCTURE DECKS.									
Upper Deck.									
Description of Hatchway			Fore Hold	Cargo & O.P.B. fore & aft (20)	Store Aft.				
Dimensions of Hatchway			21'6" x 16'6"	6'0" x 4'0"	4'0" x 3'0"				
COAMINGS	{	Height above Deck	30" /	30" /	25" /				
		Thickness { Sides	.40 /	.36 /	.38 /				
		Ends							
		Stiffeners	6 x 3 x 38 /	✓	✓				
		Brackets, Stays	2 /	✓	✓				
		Ends	2 /	✓	✓				
HATCH BEAMS	{	Number	2						
		Spacing	hinged						
		Scantling and Sketch	steel						
		Bearing Surface	W.T. covers stiffened by angles on						
FORE AND AFTERS	{	Number	inside						
		Spacing	with						
		Unsupported Lengths	23 x 15"						
		Scantling* and Sketch	manhole						
		Bearing Surface	50 cover operated from both sides						
HATCH COVERS	{	Material	steel	hinged steel	hinged steel				
		Thickness	as	.40	.40				
		How fitted	above	O.T. cover	W.T. cover				
		Bearing Surface							
Spacing of Cleats			24" /	18" /	24" /				
Number of Tarpaulins			✓	✓	✓				
<p>*Are wood fore and afters steel shod at all bearing surfaces? ✓</p> <p>Are battens and wedges efficient and in good condition? ✓</p> <p>Are tarpaulins in good condition and in accordance with rule requirements? ✓</p> <p>Are lashings provided in accordance with rule requirements? ✓</p>									

Particulars of any special features:— 2 skylights on Upper Dk aft 3'6" x 3'0" x 22 1/2" high - steel of substantial construction with hinged steel W.T. cover with 2-9" dia vents 30" high provided with canvas covers. on each

Endorsement at first survey and at surveys for renewal of Certificate:—

The fittings and appliances are in accordance with the particulars shown on this form (or as now modified) and are in good condition.

