



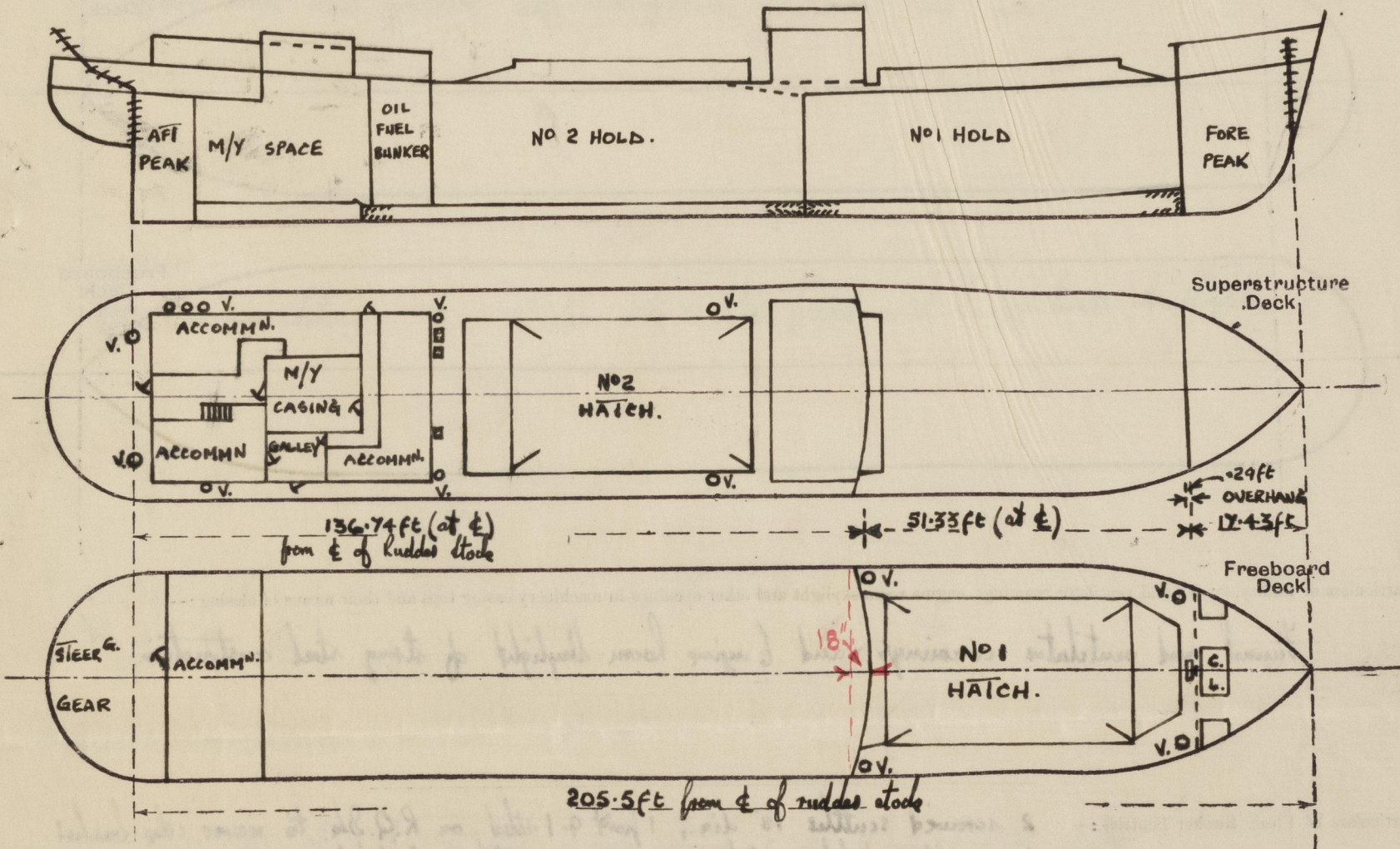
# Lloyd's Register of Shipping.

## SURVEYS FOR FREEBOARD.

(CONDITIONS OF ASSIGNMENT.)

Ship's Name "SLANEY" Port of Survey NEWCASTLE-ON-TYNE  
Official Number 183194 Surveyor's Signature R. H. Y. Gordon for self & J. M. Ballman  
Nationality and Port of Registry BRITISH - LONDON Date of Survey Whilst Building

Disposition and dimensions of superstructures, trunks, deckhouses and machinery casings to be inserted in the diagrams and tabular statement:—



Particulars of Superstructures, Trunks, Casings, Deckhouses.

	Coaming	Plating	Stiffeners	Spacing	End Attachments of Stiffeners	Size of Openings	Height of Sills	Height of Casings
Poop Bulkhead ...	-	-	-	-	-	-	-	-
Raised Quarter Deck Bulkhead ...	.30"	.30"	3"x3"x.36" O.A.'s (double) and 5"x3"x.26" B.A. in conjunction with .38" diaphragm plates	-	-	None clear of No 1 Hatchway	-	5'-0" above the deck.
Bridge, After Bulkhead ...	-	-	-	-	-	-	-	-
Bridge, Forward Bulkhead ...	-	-	-	-	-	-	-	-
Forecastle Bulkhead ...	Open	-	-	-	-	-	-	-
Trunk, Aft ...	-	-	-	-	-	-	-	-
Trunk, Forward ...	-	-	-	-	-	-	-	-
Exposed Machinery Casings on Freeboard or Raised Quarter Decks ...	-	-	-	-	-	-	-	-
Exposed Machinery Casings on Superstructure Decks ...	.26"	.26"	3"x2 1/2"x.30" O.A.	27"-31"	Blot at top	None	-	2'-0"
Machinery Casings within Superstructures not fitted with Class I Closing Appliances ...	.30"	.26"	3"x2 1/2"x.30" O.A.	27"-31"	None	Fore and aft 10'4"x2'-0" Aft and 10'2'-6"x2'-0"	18"	7'-0"
Deckhouses on Flush Deck Ships ...	-	-	-	-	-	-	-	-

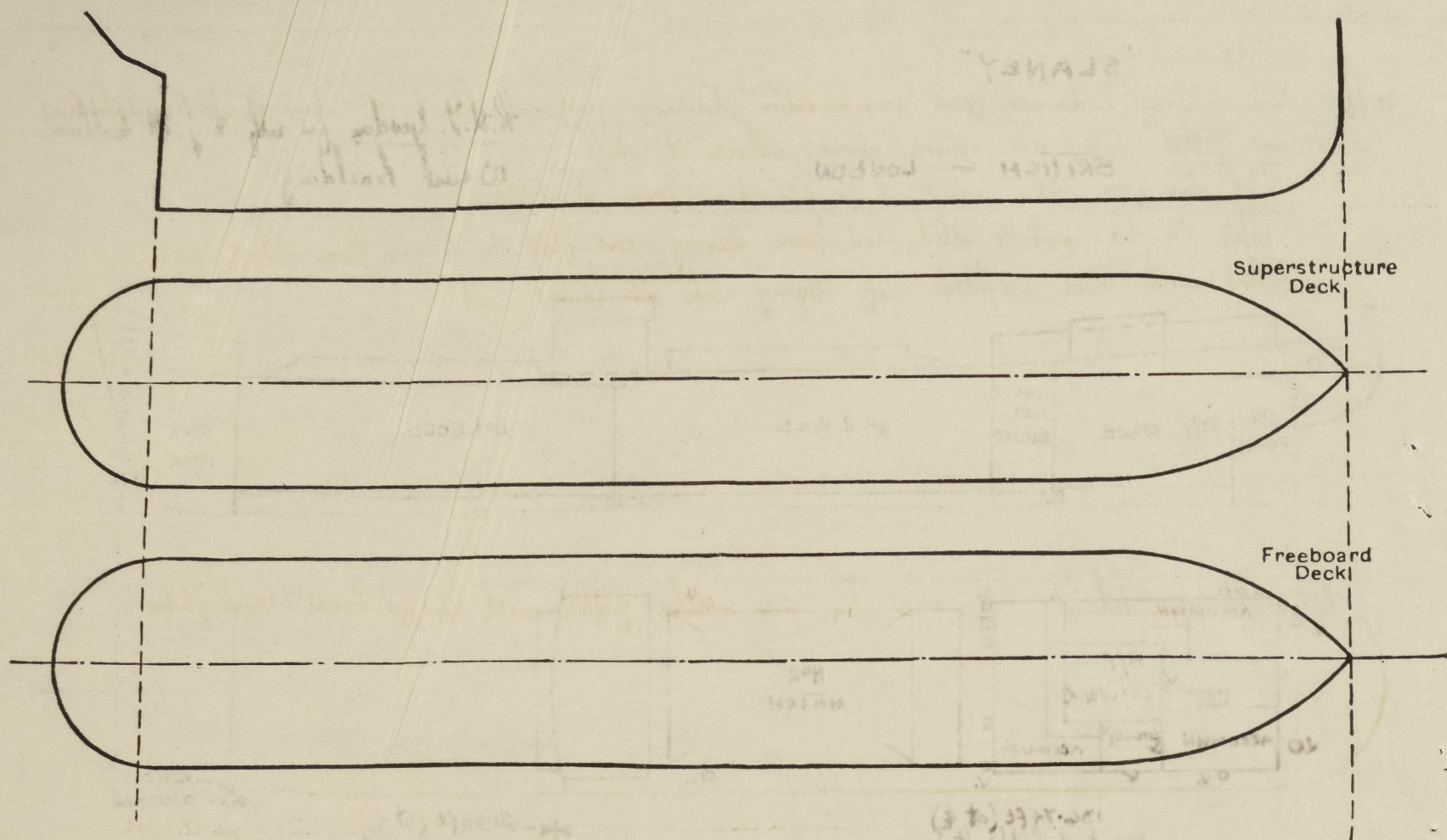
Particulars of Closing Appliances (state if capable of being manipulated from both sides).

Poop Bulkhead ...	-
Raised Quarter Deck Bulkhead ...	No openings clear of No 1 Hatch ✓
Bridge, After Bulkhead ...	-
Bridge, Forward Bulkhead ...	-
Forecastle Bulkhead ...	Open ✓
Exposed Machinery Casings on Freeboard or Raised Quarter Decks ...	-
Exposed Machinery Casings on Superstructure Decks ...	No openings ✓
Machinery Casings within Superstructures not fitted with Class I Closing Appliances ...	Winged steel doors operated both sides. ✓
Deckhouses on Flush Deck Ships ...	-



### PARTICULARS OF PROTECTION TO OPENINGS, ETC.

The following diagrams should be used to indicate the positions of cargo and coaling hatchways, gangway, cargo and coaling ports, ventilators, companionways, etc., which would affect the seaworthiness of the ship :—



Particulars of fiddley, funnel and ventilator coamings, engine room skylight and other openings in machinery casing tops and their means of closing :—

Furnace and ventilator coverings and Engine Room skylight of strong steel construction.

Particulars of Flush Bunker Scuttles:—

2 screwed scuttles 18" dia., 1 port & 1 stbd, on R.Q. Dk. to receive cargo brumhes  
1 on after deckhouse top 18" dia., to galley coal brumhes. ✓  
These scuttles fitted with chain attachment to deck.

Particulars of Companionways :—

On R.Q.D.s. in after deckhouse to after flat accommodation - Entrance through 1 1/2" thick teakwood door in deckhouse 4'-4" x 1'-11", coaming 18" x 30" thick. O.B.S.

**Particulars of Ventilators in exposed positions on freeboard and superstructure decks :—**

On Keelboard deck - 2 at 10" dia. coaming 51" x 30" thick to No 1 Hold (initially staged)  
 2 @ 10" " " 97" x 30" " " " ( " " )  
 On R. Q. deck - 2 @ 15" " " 12-3" x 36" " " No 2 " ( " " )  
 2 @ 12" " " 31" x 36" " " " " ( " " )  
 2 @ 8" } " " 31" x 30" " " after accommodation.  
 4 @ 5" }

On after deckhouse top - 7 @ 6" " " 30" x 30" " " deckhouse accommodation.

16 @ 5" dia., 1 @ 6" dia. mushroom vents to dedhouse accommodation

Wood plugs and canvas covers fitted to all cond ventilators.

Particulars of Air Pipes in exposed positions on freeboard, raised quarter, or superstructure decks:—

On forecath deck - 1 @ 3" dia., 29" high to top of Fore Peak Tank.

On foreboard deck - 1 part and stbd at 4" dia., 36" high to lip to No 1 D.B. Tank.

On R. Q. docks - 1 " " " " 4 1/2" dia., 28" " " " " 1102 " " " " } see sheet  
1 " " " " 4" dia., 28" " " " " Oil fuel burner.  
1 @ 3" dia., 30" high to lip to after peak tank

His pipes fitted with wood plugs and canvas covers.  
Younger and canvas covers fitted to Old Tied bamboo air pipes.

Particulars of Gangway Cargo and Coaling Ports:—

NONE.

Particulars of Scuppers and Sanitary Discharge Pipes :—

scupper and sanitary discharges from accommodation discharge overboard about 18" above freeboard deck level and are fitted with non-return storm valves at shell.

4" dia from W.C.'s and 2" & 2½" dia. from washplaces).

1 scupper 2½" dia., port & starb, led from steering gear flat to living room bilges and fitted with lever weighted self closing cocks at lower end.

No outboard discharges from spaces below the R.O.D<sup>K</sup>.

Particulars of Side Scuttles:—

Side Scuttles:—  
after accommodation - 9 - 12" dia side scuttles fitted with hinged brass deadlights. ✓

Vertical distance of Sill of lowest Side Scuttle above top of keel..... 18' - 4"

Particulars of Guard Rails :—

Firecastle Decks - 36" high, 2 rods, standers spaced about 4'-6" apart. ✓  
After Deckhouse - 36" high in way of wood sheathing, 39" in way steel decks - 3 rods ✓  
standers spaced about 4'-6" to 5'-0" apart. ✓

Particulars of Gangways, Lifelines, etc. :—


ars of Gangways, Lifelines, etc.:-  
Wood gangway fitted port and stbd, from fore-castle deck ladders to No 1 Water top and from R.Q. deck ladders to No 1 Water top ✓  
Lifelines fitted from fore-castle point to R.Q. deck bulkhead and from after end of midship deckhouse to fore end of after deckhouse ✓

Particulars of Freeing Arrangements.						
	Length of Bulwark	Height of Bulwark	Size of Freeing Ports	Number each side	Area each side	Rule area each side
After Well R.Q. 5th. ...	143'-4"	3'-3"	5 @ 11'-0" x 6"	5	27.5 1/2 ft. ✓	27.25 ✓
Forward Well ...	52'-10"	3'-6"	2 @ 9'-2" x 6" 1 @ 7'-4" x 6"	3	12.84 2/3 ft. ✓	12 11/78 ✓

State position of each freeing port ... (After Well:— R.Q. 8th. Lrs 6-12, 20-26, 33-39, 48-54, 62-68.  
(F. and A. position and height above deck edge) Forward Well:— Lrs 75-79, 83-88, 91-96

State whether the freeing ports are fitted with shutters, bars, or rails, and give particulars of such:— Open slots with lower edge 6" above deck.

Additional area where sheer is less than standard.



© 2021  
Lloyd's Register  
Foundation



# PARTICULARS OF PROTECTION TO OPENINGS, ETC.

HATCHWAYS ON FREEBOARD AND SUPERSTRUCTURE DECKS.									
Description of Hatchway		F.B.D. DECK (SELF TRIMMING MATCHES) NO 1 CLEAR OPENING	R. Q. DECK NO 2 CLEAR OPENING		F.B.D. DECK ACCESS TO NO 1 HOLD	R. Q. DECK ACCESS TO NO 2 HOLD	O.T. HATCH TO O.F. BUNKER (2)		
Dimensions of Hatchway		40'-4" x 20'-0"	51'-4" x 20'-0"		2'-0" x 1'-6"	2'-0" x 1'-7"	2'-6" x 1'-7"		
COAMINGS	Height above Deck	51"	48"		24 1/2"	24 1/2"	26"		
	Thicknes { Sides	.44"	.44"		.31"	.31"	.31"		
	Thicknes { Ends	.44"	.44"		.31"	.31"	.31"		
	Stiffeners	SEE SKETCH	SEE SKETCH		-	-	-		
	Brackets, Stays	6	2		-	-	-		
HATCH BEAMS	Number	7	10						
	Spacing	5'-0 1/2"	4'-8"						
	Scantling and Sketch								
	WEB (AT CENTRE)	18" x 36"	12 3/4" x 34"						
	ANGLES (TOP & BOTTOM)	4" x 3" x 4 1/4"	4" x 3" x 4 1/4"						
Bearing Surface	3"	3"							
FORE AND AFTERS	Number								
	Spacing								
	Unsupported Lengths								
	Scantling* and Sketch								
	Bearing Surface								
HATCH COVERS	Material	O.P.	O.P.		STEEL W.T.	STEEL W.T.	STEEL O.T.		
	Thickness	2 1/2"	2 1/2"		HATCH HINGED	HATCH HINGED	HATCH HINGED		
	How fitted	F. & A.	F. & A.		STEEL COVER 31	STEEL COVER 31	STEEL COVER 31		
	Bearing Surface	3	3		THICK, TONGUES 10-12" APART	THICK, TONGUES 10-12" APART	THICK, TONGUES 9-12" APART		
Spacing of Cleats	24"	24"		-	-	-			
Number of Tarpaulins	2	2		-	-	-			
<p>*Are wood fore and afters steel shod at all bearing surfaces? YES ✓</p> <p>Are battens and wedges efficient and in good condition? YES ✓</p> <p>Are tarpaulins in good condition and in accordance with rule requirements? YES ✓</p> <p>Are lashings provided in accordance with rule requirements? YES (LOCKING BARS ON) ✓</p>									

Particulars of any special features:—

To fore peak - access through 18" x 12" manhole on freeboard deck in forecathle space, 30" cover secured by bolts spaced 4" apart. ✓

To after peak - access through 18" x 12" manhole on steering gear flat, 30" cover secured by bolts spaced 4" apart. ✓

Endorsement at first survey and at surveys for renewal of Certificate:—

The fittings and appliances are in accordance with the particulars shown on this form (or as now modified) and are in good condition.



© 2021

Lloyd's Register Foundation