

Messrs Cleland (Successors) Ltd  
SHIP NO. 147  
M.V. "SLANEY"

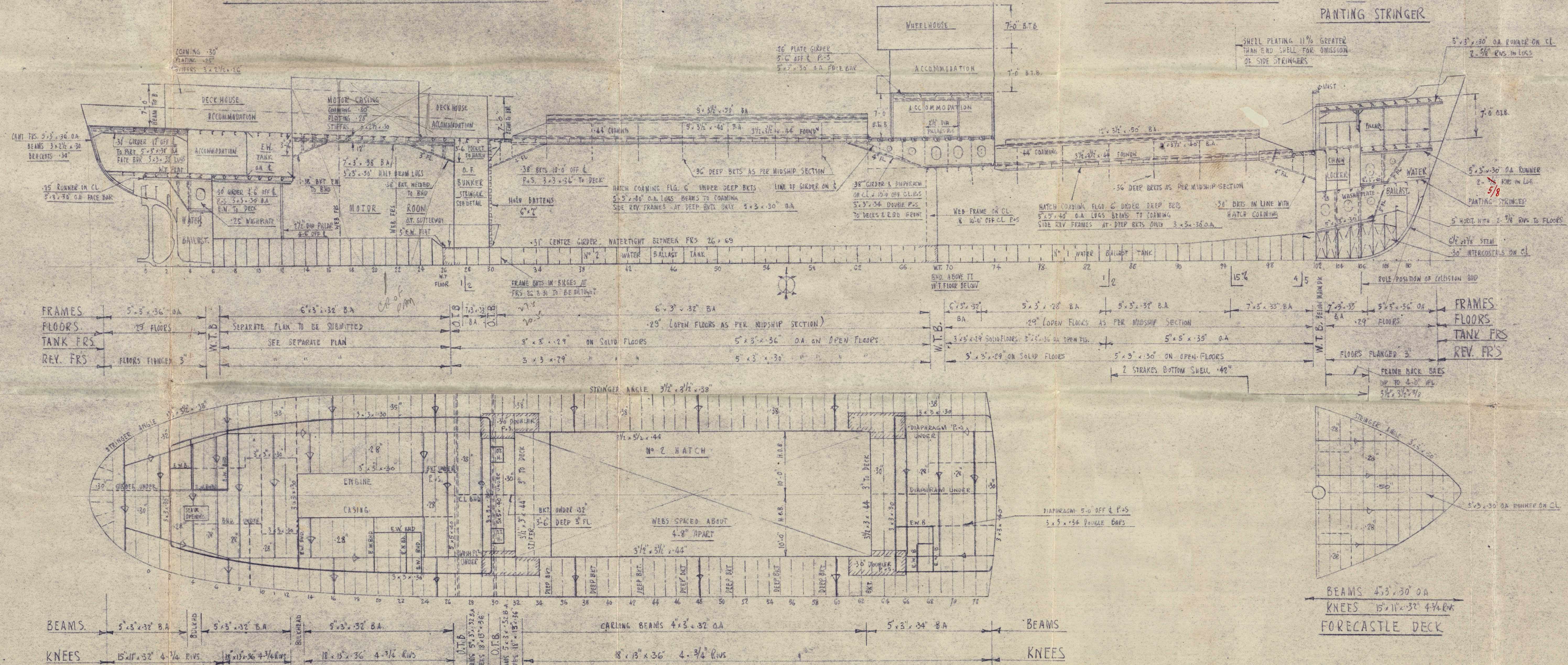
# N° 147 SHIP PROFILE & DECKS

NEWCASTLE ON TYNE  
Report No. 104095

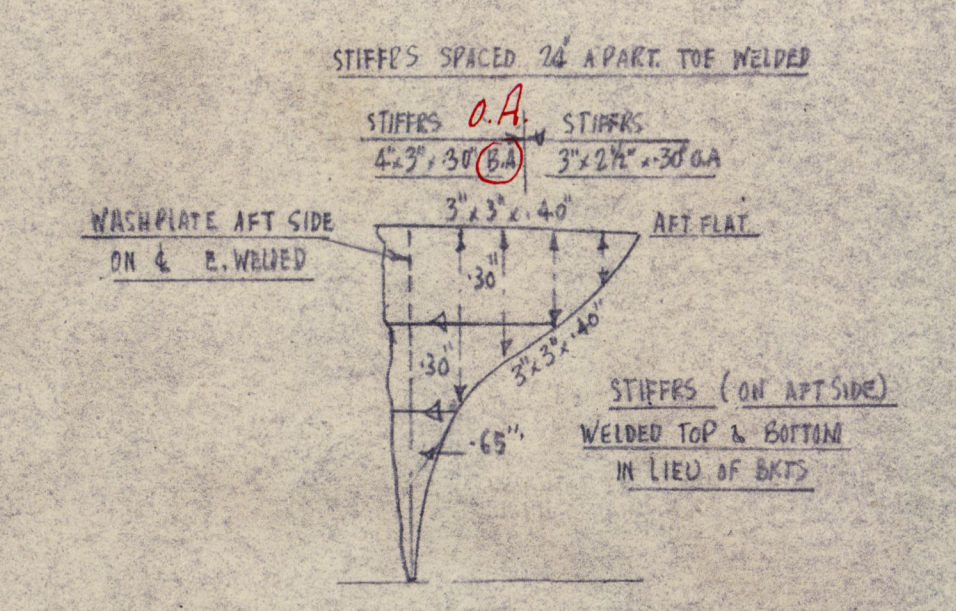
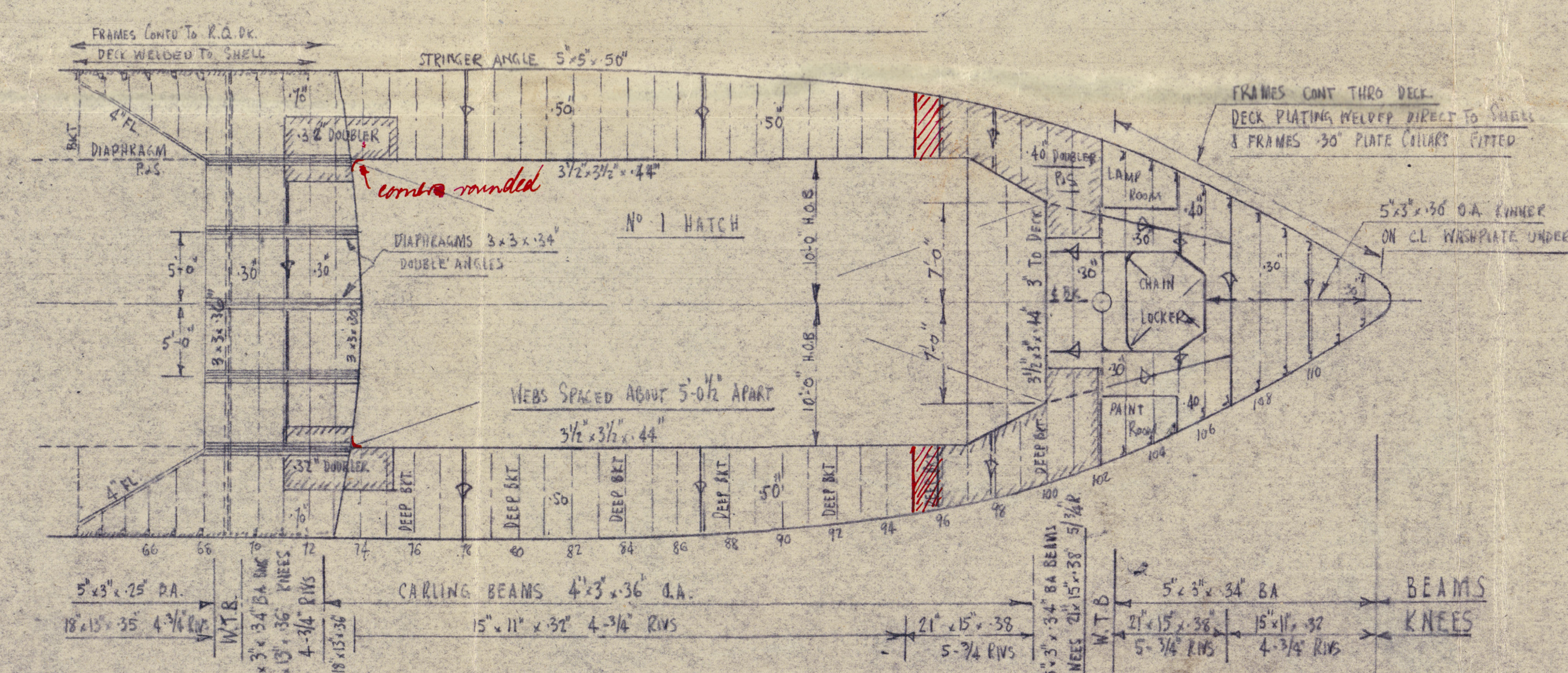
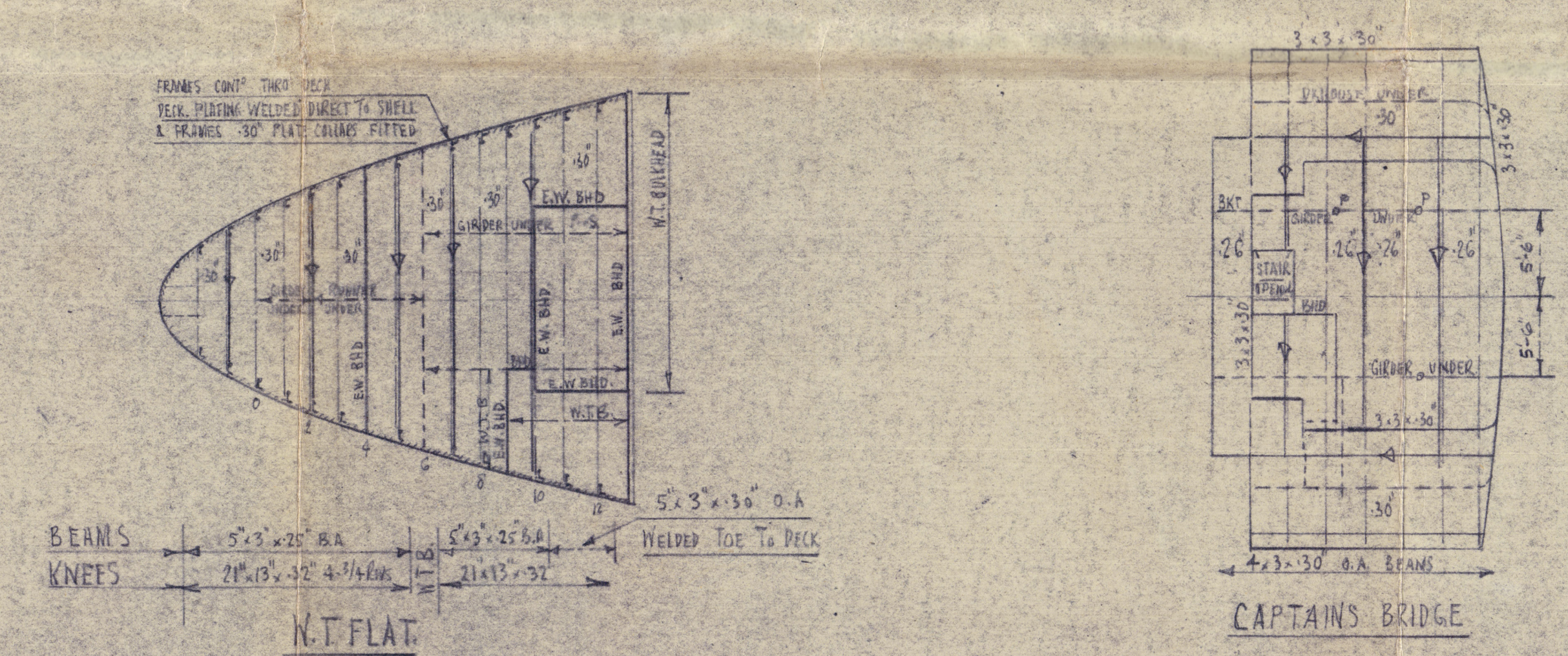
SCALE 1/8" = 1 FOOT

DIMS: 205'-0" L.B.P. x 32'-6" B.M.D. x 13'-11" D.M.D. TO MAIN DECK  
TO LLOYDS CLASS 100 A.1. + 5-0 " R.Q. DECK

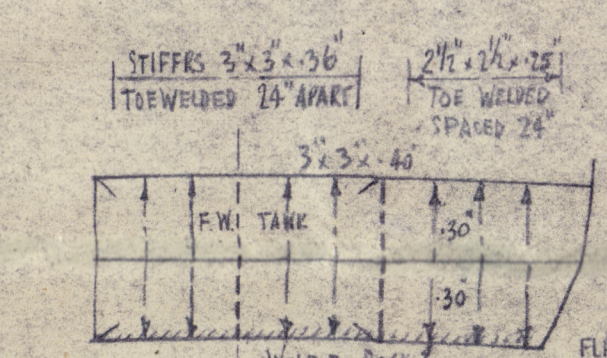
FRAMES SPACED 22" APART THROUGHOUT



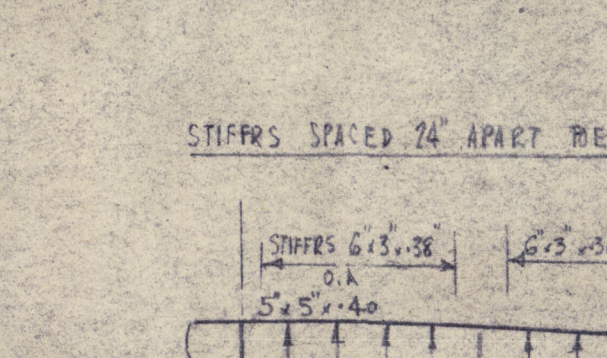
## RAISED QUARTER DECK



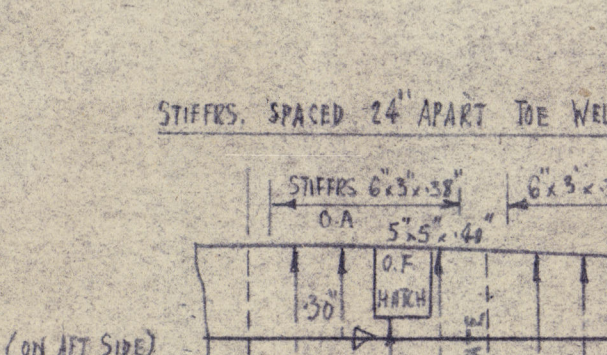
## W.T. BULKHEAD N° 6 LOOKING AFT



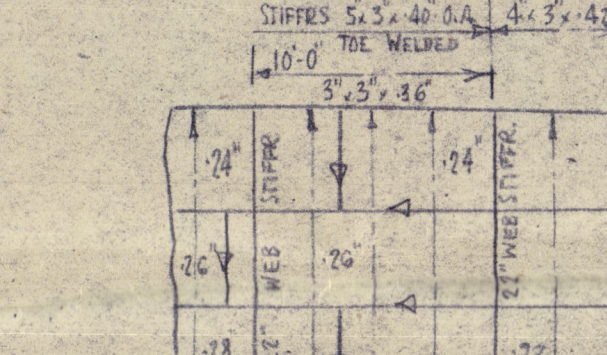
## W.T. BULKHEAD N° 13 LOOKING AFT



## O.T. BULKHEAD N° 27 LOOKING FORWARD



## O.T. BULKHEAD N° 30 LOOKING AFT



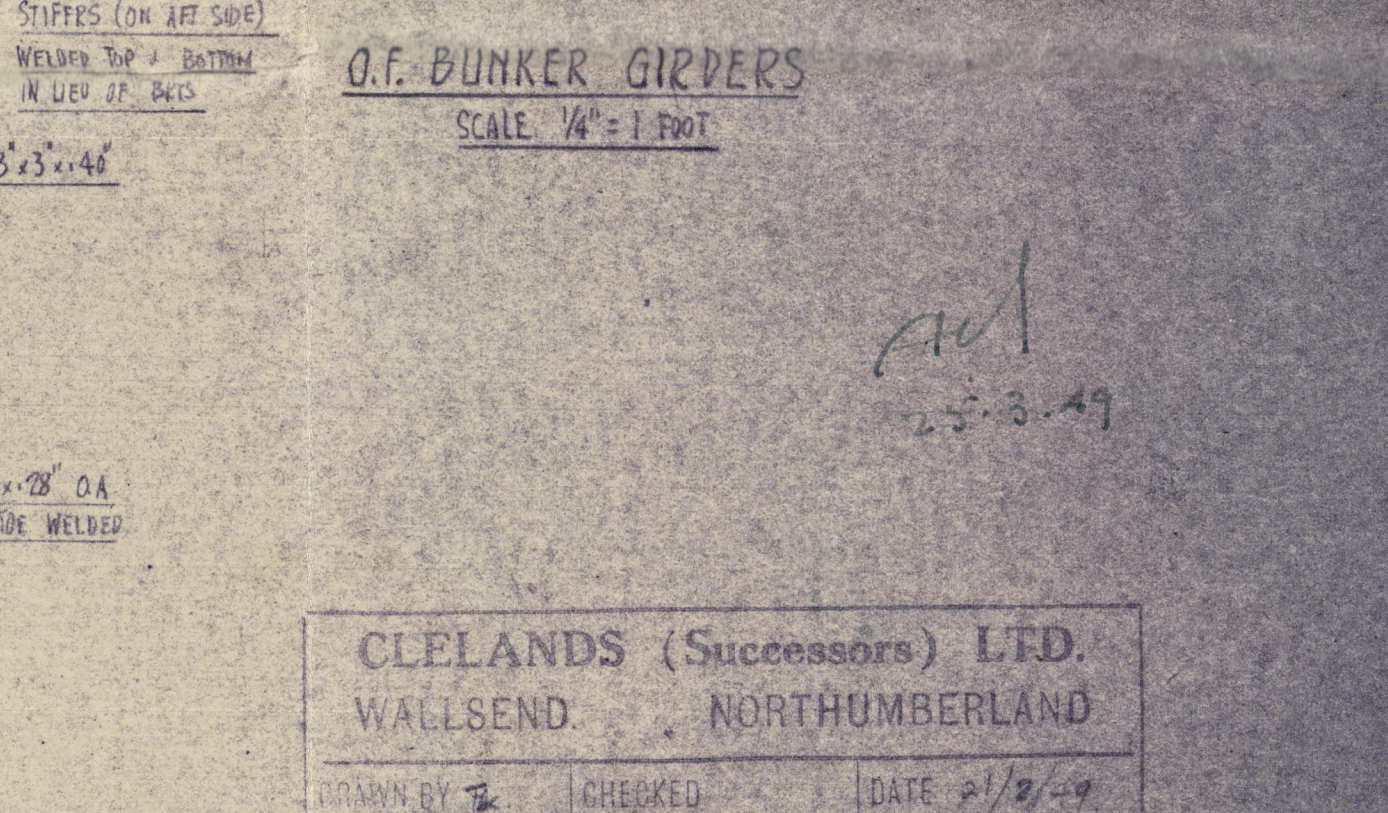
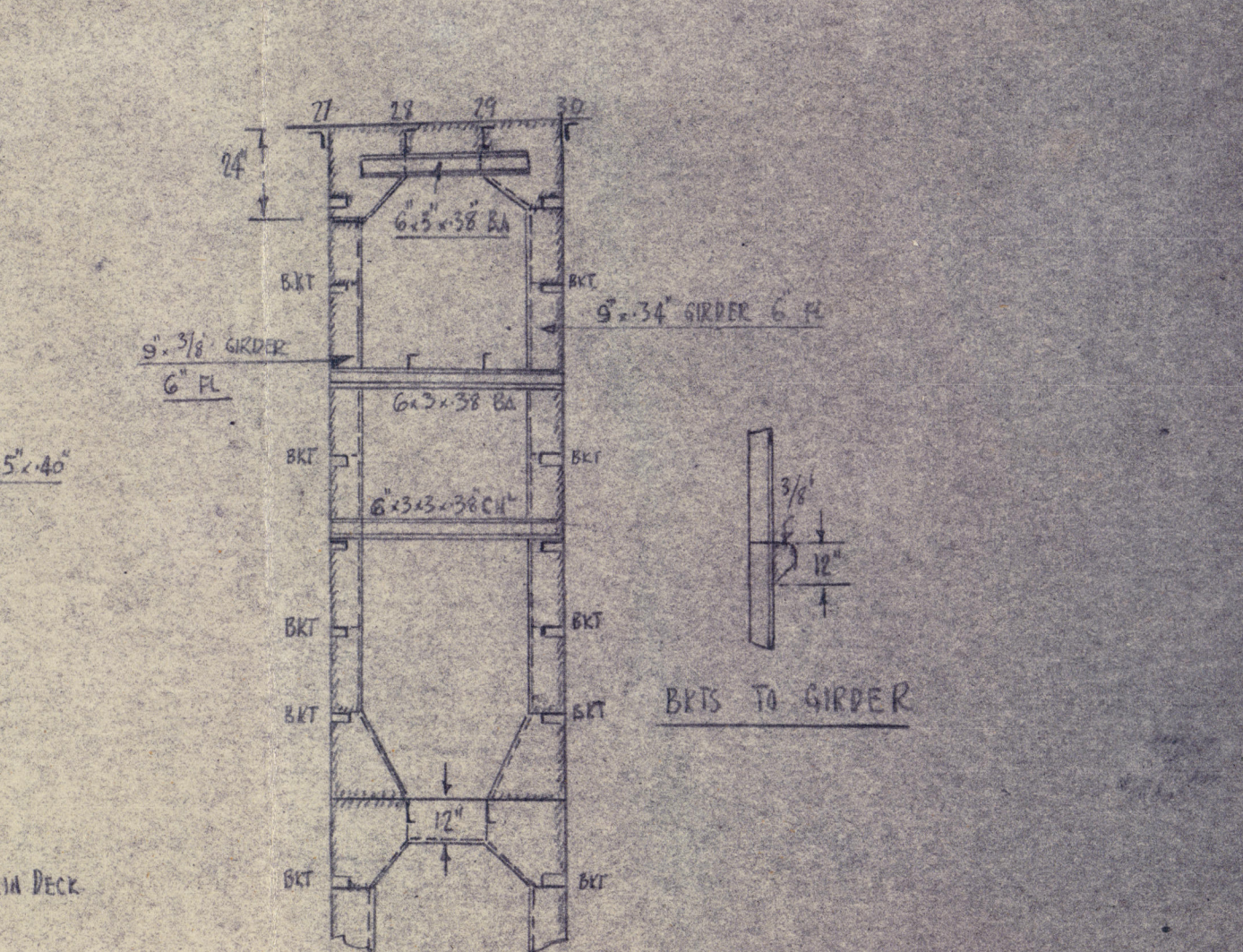
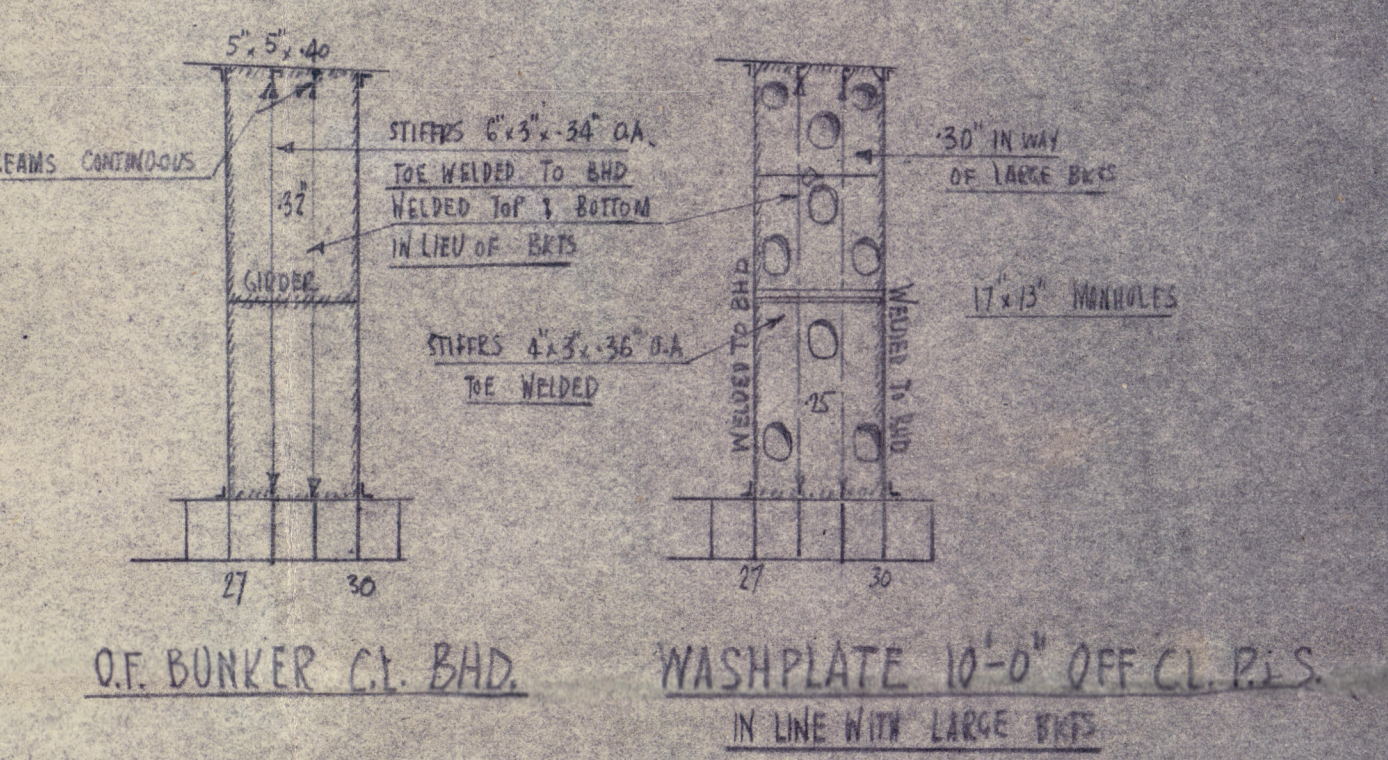
## W.T. BULKHEAD N° 63 LOOKING AFT



## W.T. BULKHEAD N° 102 LOOKING FORWARD

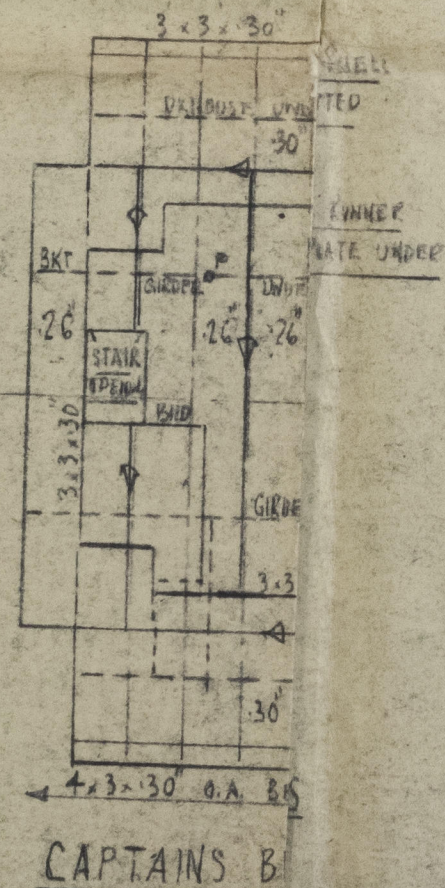
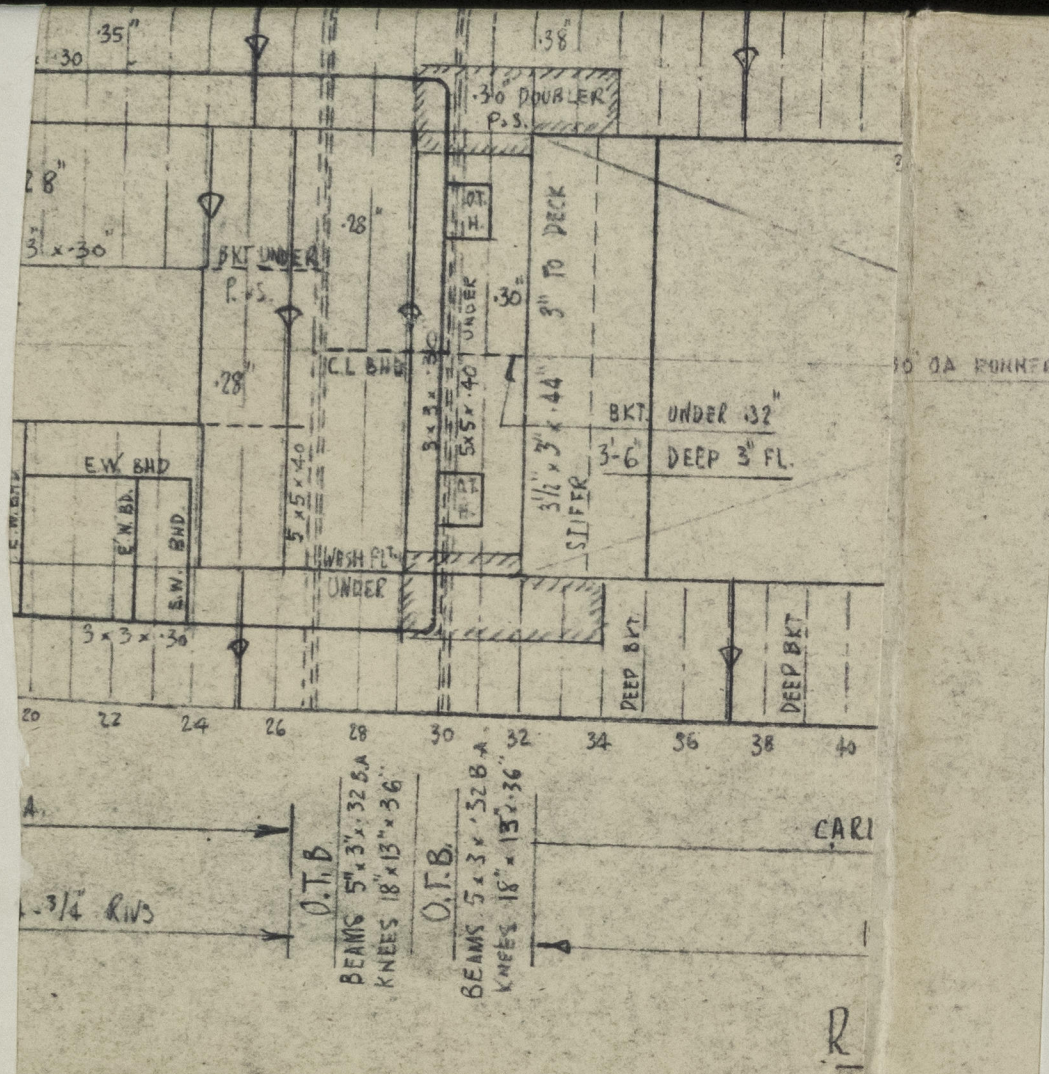


SCHEME OF WELDING ALL TO SURVEYORS SATISFACTION						
SKETCH	POSITION	RAIL	GAUGE & LENGTH	WELPS	ELECTRODE	REMARKS
	DECK BEAMS	2	6/16	140	APR. 200	DOWN HAND
	SEAL WELD	2	6/16	140	APR. 200	DOWN HAND
	SEAL WELD	2	6/16	140	APR. 200	DOWN HAND
	SEAL WELD	2	6/16	140	APR. 200	DOWN HAND
	DECK BUTTS ON BEAMS	2	6/16	140	APR. 200	DOWN HAND
	DECK BUTTS ON BEAMS	2	6/16	140	APR. 200	DOWN HAND
	DECK BUTTS ON BEAMS	2	6/16	140	APR. 200	DOWN HAND
	DECK BUTTS ON BEAMS	2	6/16	140	APR. 200	DOWN HAND
	BULKHEAD BUTTS	2	6/16	140	APR. 200	DOWN HAND
	BULKHEAD BUTTS	2	6/16	140	APR. 200	DOWN HAND
	BULKHEAD BUTTS	2	6/16	140	APR. 200	DOWN HAND
	BULKHEAD BUTTS	2	6/16	140	APR. 200	DOWN HAND
	BULKHEAD GIRDERS	2	6/16	140	APR. 200	DOWN HAND
	BULKHEAD GIRDERS	2	6/16	140	APR. 200	DOWN HAND
	BULKHEAD GIRDERS	2	6/16	140	APR. 200	DOWN HAND
	BULKHEAD GIRDERS	2	6/16	140	APR. 200	DOWN HAND
	BULKHEAD BUTTS	2	6/16	140	APR. 200	DOWN HAND
	BULKHEAD BUTTS	2	6/16	140	APR. 200	DOWN HAND
	BULKHEAD BUTTS	2	6/16	140	APR. 200	DOWN HAND
	BULKHEAD BUTTS	2	6/16	140	APR. 200	DOWN HAND



CLELANDS (SUCCESSORS) LTD.  
WALLSEND, NORTHUMBERLAND  
DRAWN BY THE ARCHITECT DATE 2/2/49





21  
 22  
 42  
 42  
 12 (46)  
 78.  
 1-11 22  
 27 6  
 132  
 11  
 1-10.6

003712-003719-0043



© 2021  
 Lloyd's Register  
 Foundation



S/R

In "SLANEY." <sup>17/</sup> ~~17/~~

Rodolph Fisher

Profile & decks

RECORDS DEPT.  
LONDON

2

RETAIN LR

© 2021

Lloyd's Register  
Foundation

003712-003719-0043