

SHIP № 147

SCALE - $\frac{1}{4}$ " = 1 FOOT.

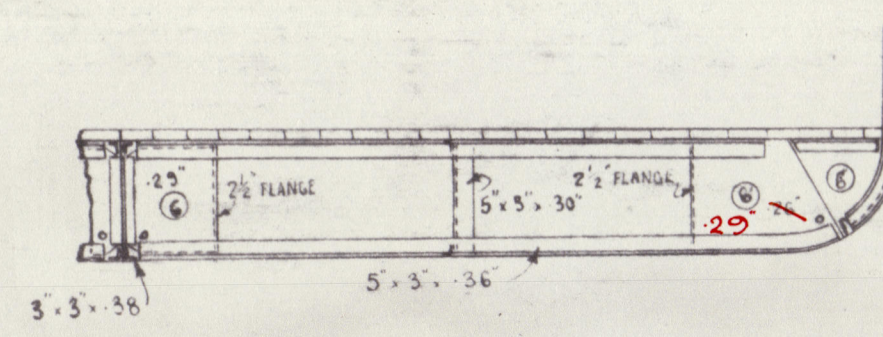
APPROVED BY LLOYDS FOR 14G SHIP

NOTES.

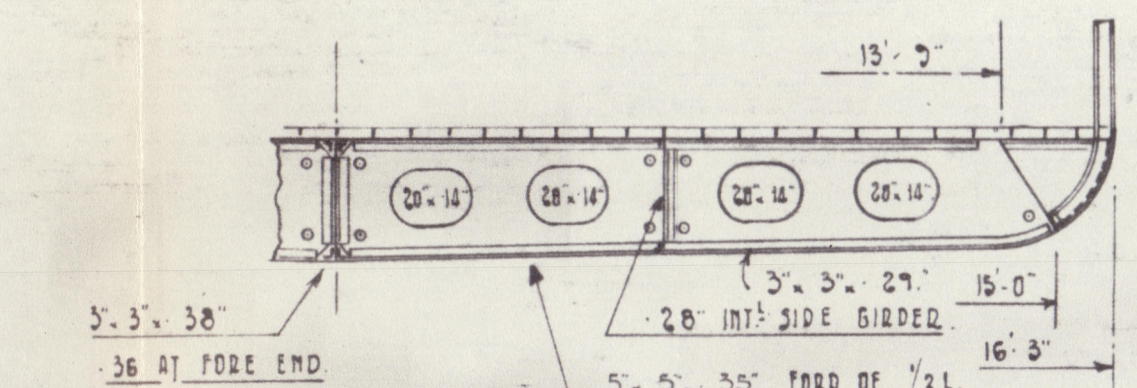
FRAMES SPACED 22" APART THROUGHOUT
HOLD FRAMES TO BE PUNCHED FOR SPARRING.
FIGURED LENGTHS ALONG ELEVATION ARE ORDERED LENGTHS OF MAIN & BOTTOM FRAMES.

RIVETING.

MAIN FRAMES TO SUBSTRUCTURE	M/4	M/4	SW/TOPS	T/OPS
- - - SHELL IN PEAS	-	-	4 1/2	4 1/2
- - - BUNKER	-	-	-	-
- - - FORD % L.	-	-	-	-
- - - (EISENHART)	-	-	2 1/2	7
- - - FLOODS IN A.P.	-	-	3 1/2	5
- - - F.P.	-	-	1 1/8	2 1/2
WT. B. - SHELL	-	-	3 1/2	1
- - - BMD.	-	-	3 1/2	4 1/2
BOTTOM - SHELL W/EL. FLOODS	-	-	2 1/2	7
- - - FORD % L.	-	-	4 1/2	2 1/2
INT. FLOODS - FLOODS	-	-	3 1/2	4 1/2
22Y. - & TANK TOP	-	-	2 1/2	7
MAIN - SHELL & EL. IN MOTOR ROOM	-	-	3 1/2	4 1/2



TYPICAL SECT. THRO' BKT. FLOORS



TYPICAL SECTION THRO' SOLID FLOORS

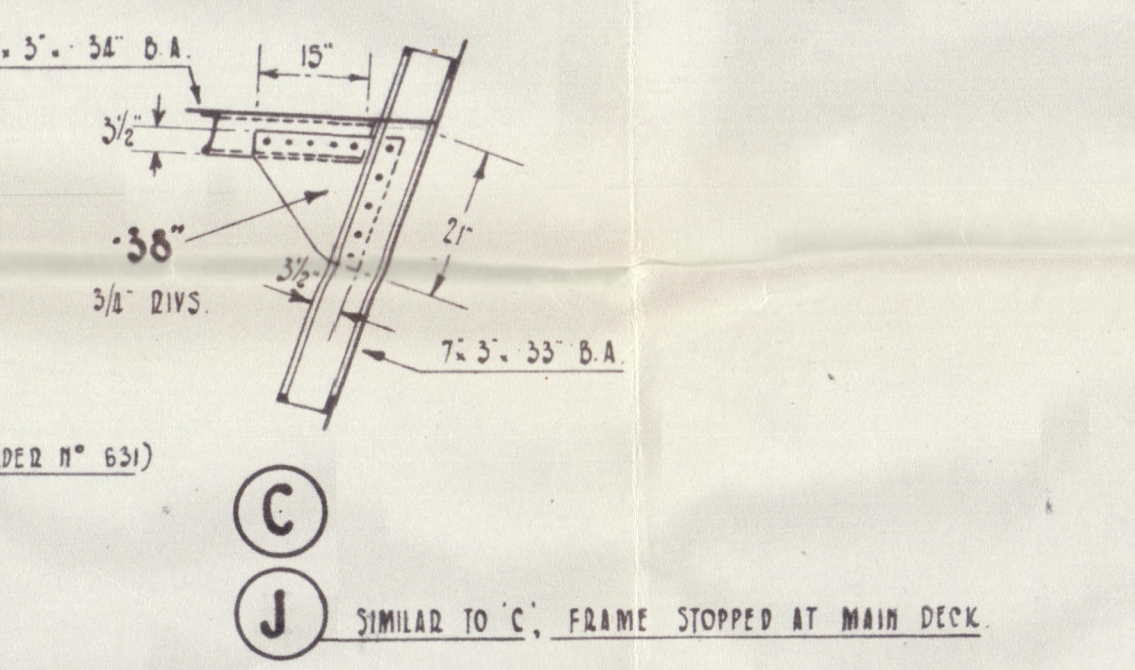
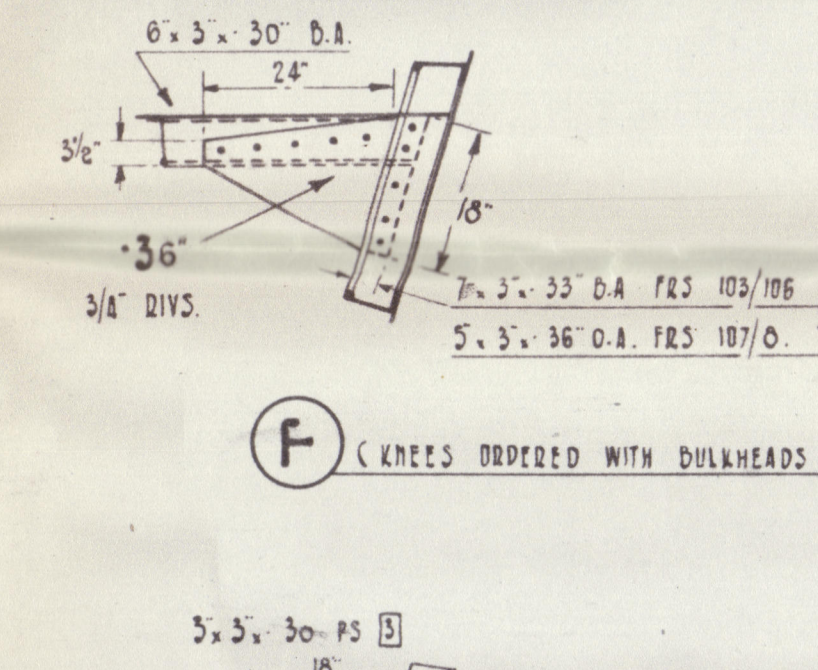
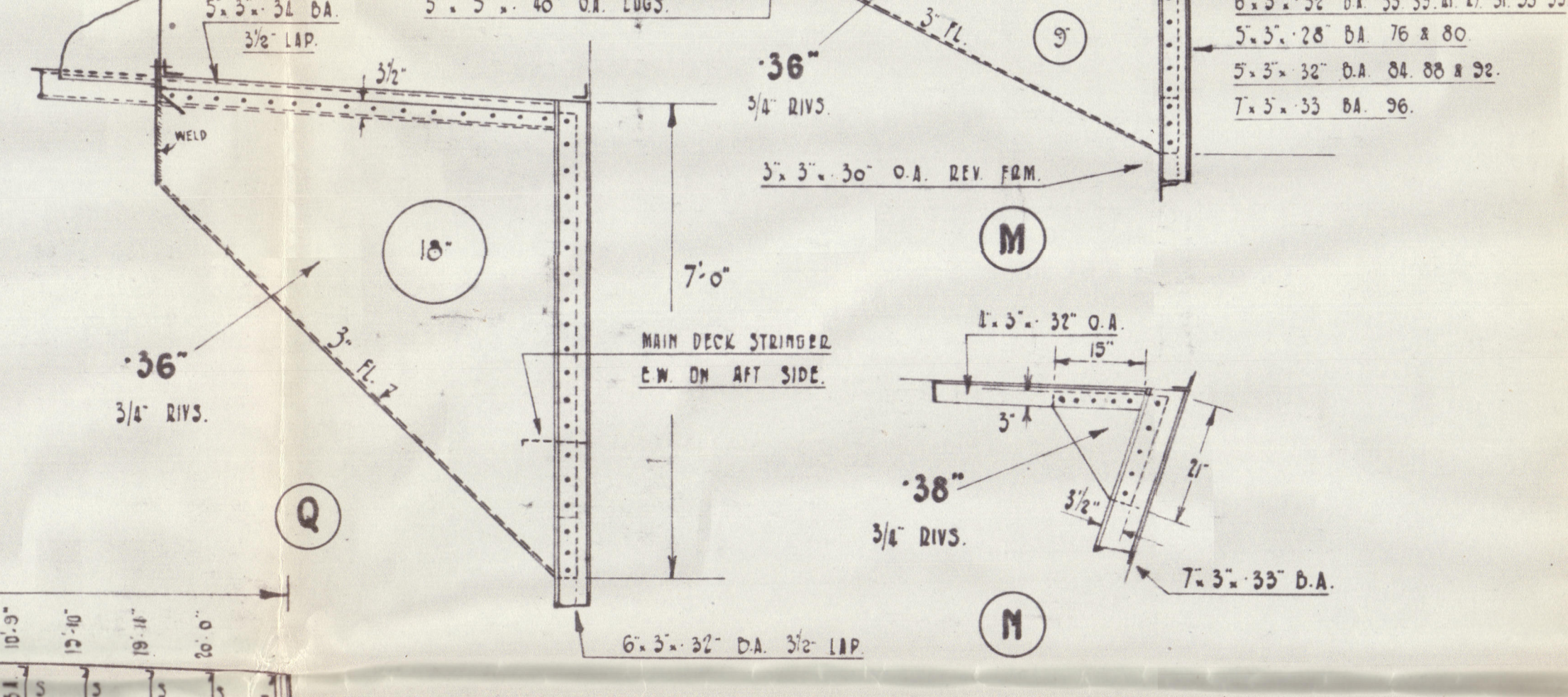
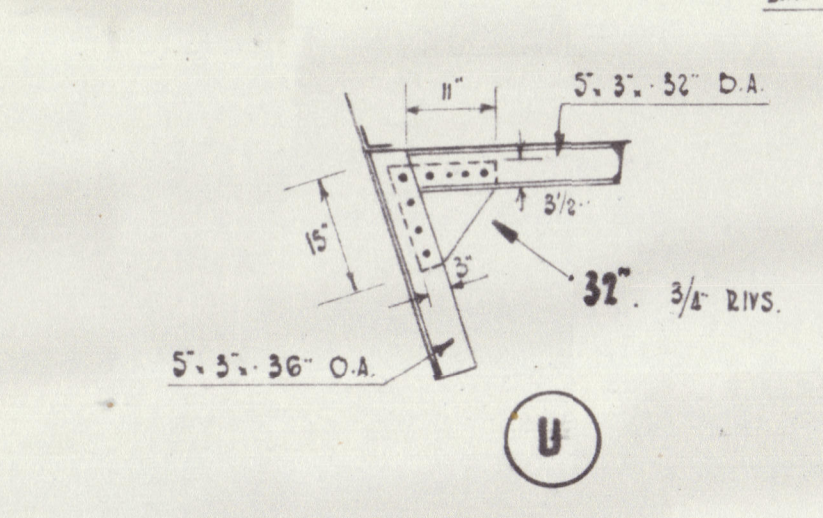
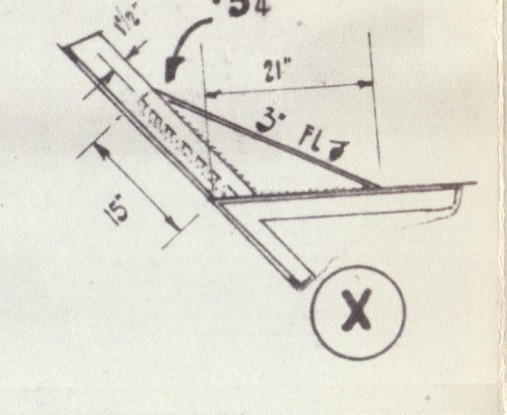
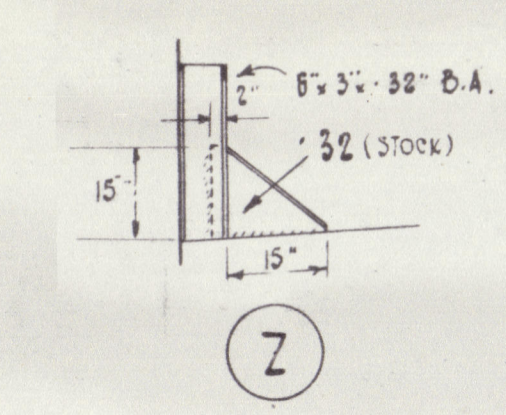
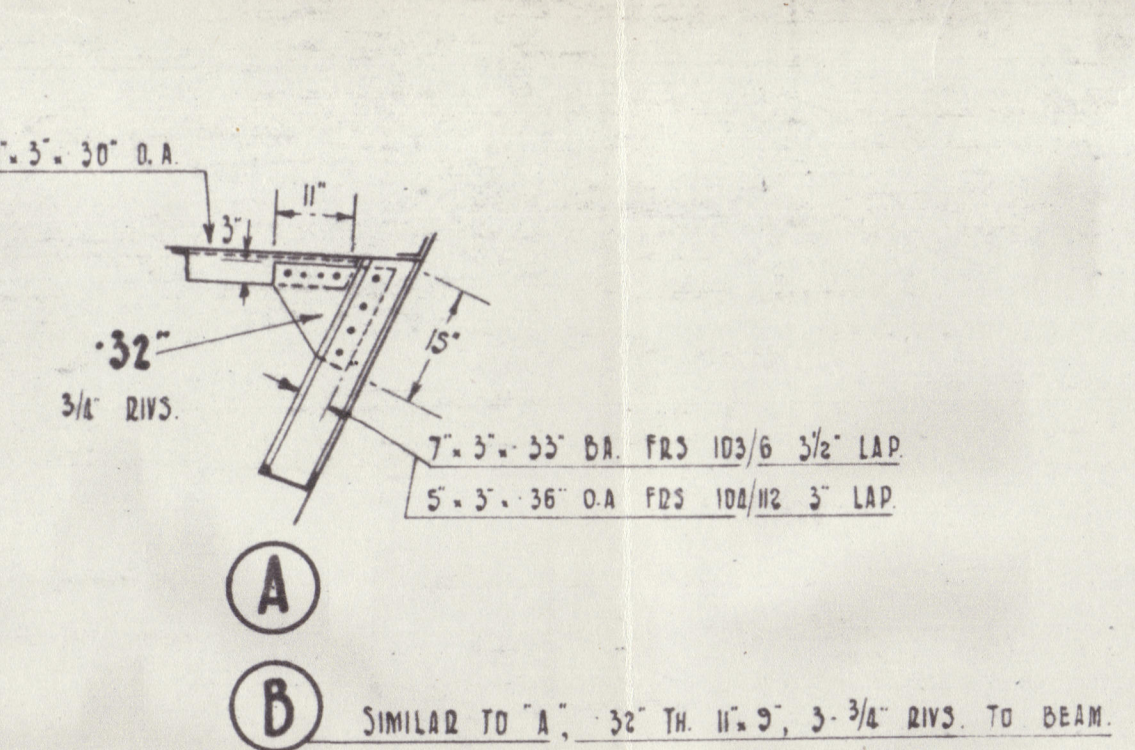
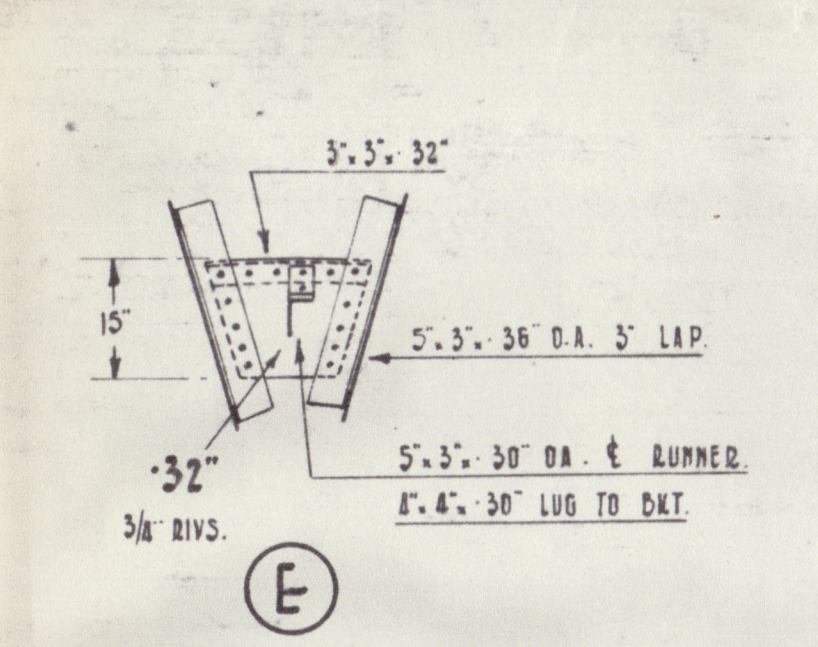
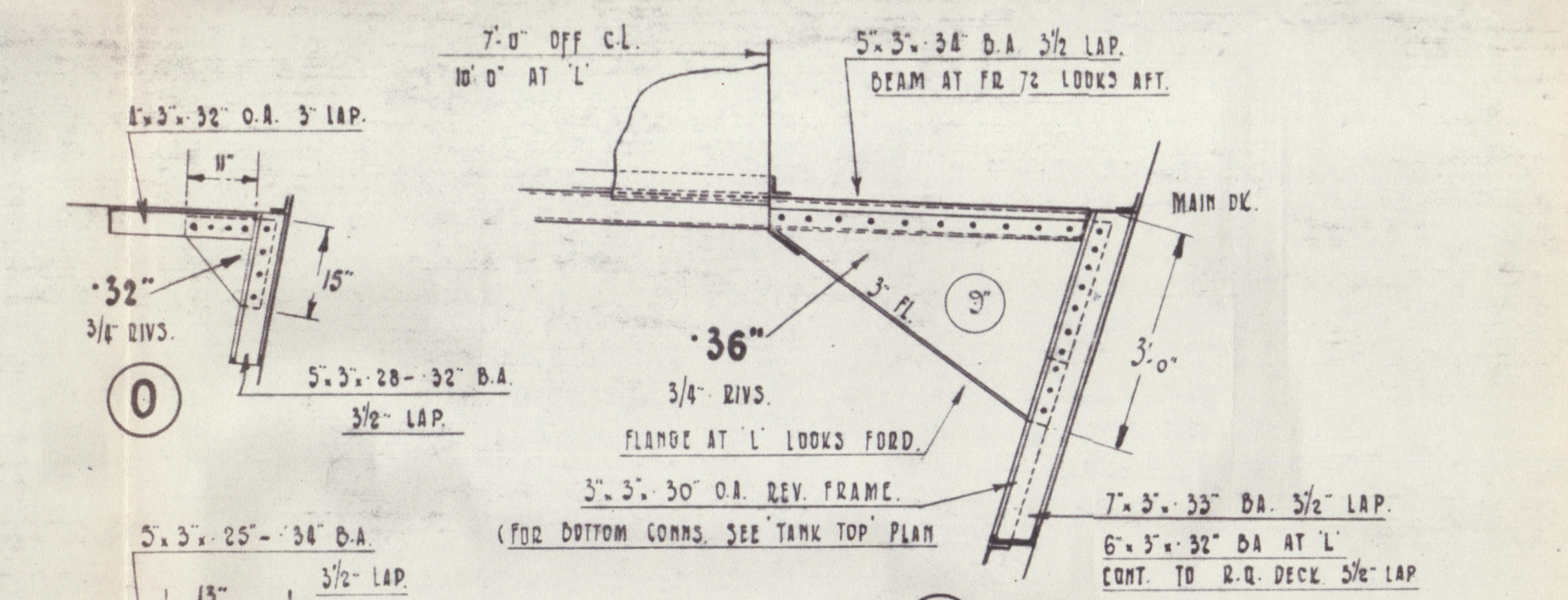
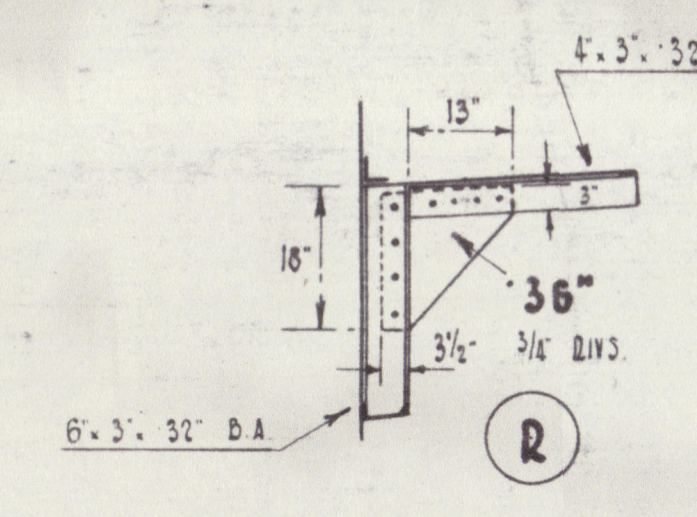
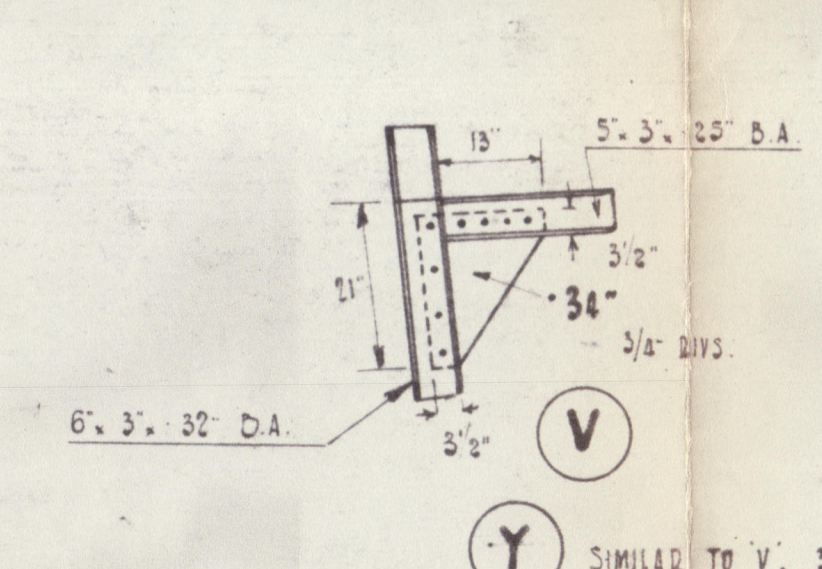


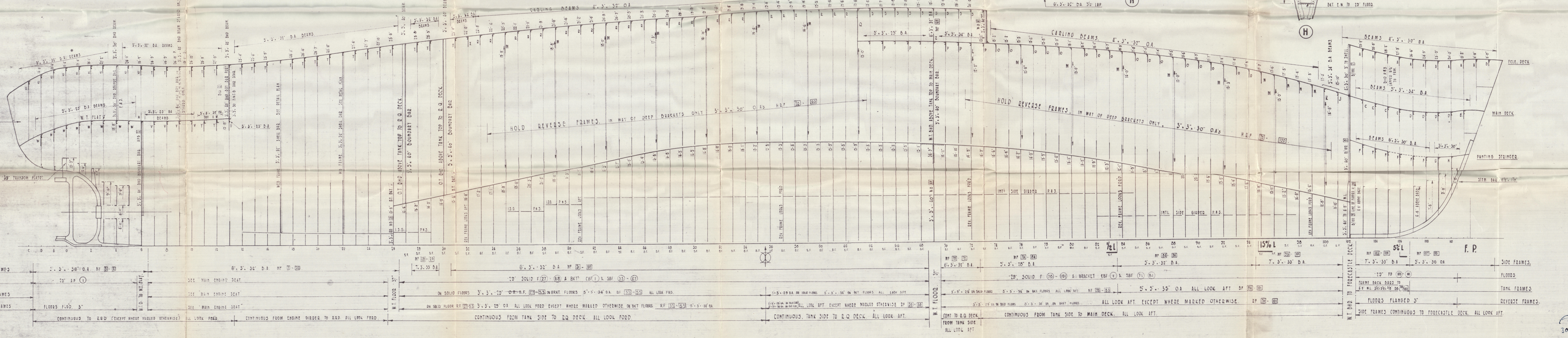
PLATE 5						
WT FLOODS						
1	10/1/01	2/1	37	17/1/01	56	01.
2	10/1/01	2	1	10	59	
FLOODS						
1	10/1/01	30	12	17/1/01	85	37
2	10/1/01	1	1	20	1	
3	10/1/01	1	1	20	1	
4	10/1/01	1	1	20	1	
5	10/1/01	1	1	20	1	
6	10/1/01	1	1	20	1	
7	10/1/01	1	1	20	1	
8	10/1/01	1	1	20	1	
9	10/1/01	1	1	20	1	
10	10/1/01	1	1	20	1	
11	10/1/01	1	1	20	1	
12	10/1/01	1	1	20	1	
13	10/1/01	1	1	20	1	
14	10/1/01	1	1	20	1	
15	10/1/01	1	1	20	1	
16	10/1/01	1	1	20	1	
17	10/1/01	1	1	20	1	
18	10/1/01	1	1	20	1	
19	10/1/01	1	1	20	1	
20	10/1/01	1	1	20	1	
21	10/1/01	1	1	20	1	
22	10/1/01	1	1	20	1	
23	10/1/01	1	1	20	1	
24	10/1/01	1	1	20	1	
25	10/1/01	1	1	20	1	
26	10/1/01	1	1	20	1	
27	10/1/01	1	1	20	1	
28	10/1/01	1	1	20	1	
29	10/1/01	1	1	20	1	
30	10/1/01	1	1	20	1	
31	10/1/01	1	1	20	1	
32	10/1/01	1	1	20	1	
33	10/1/01	1	1	20	1	
34	10/1/01	1	1	20	1	
35	10/1/01	1	1	20	1	
36	10/1/01	1	1	20	1	
37	10/1/01	1	1	20	1	
38	10/1/01	1	1	20	1	
39	10/1/01	1	1	20	1	
40	10/1/01	1	1	20	1	
41	10/1/01	1	1	20	1	
42	10/1/01	1	1	20	1	
43	10/1/01	1	1	20	1	
44	10/1/01	1	1	20	1	
45	10/1/01	1	1	20	1	
46	10/1/01	1	1	20	1	
47	10/1/01	1	1	20	1	
48	10/1/01	1	1	20	1	
49	10/1/01	1	1	20	1	
50	10/1/01	1	1	20	1	
51	10/1/01	1	1	20	1	
52	10/1/01	1	1	20	1	
53	10/1/01	1	1	20	1	
54	10/1/01	1	1	20	1	
55	10/1/01	1	1	20	1	
56	10/1/01	1	1	20	1	
57	10/1/01	1	1	20	1	
58	10/1/01	1	1	20	1	
59	10/1/01	1	1	20	1	
60	10/1/01	1	1	20	1	
61	10/1/01	1	1	20	1	
62	10/1/01	1	1	20	1	
63	10/1/01	1	1	20	1	
64	10/1/01	1	1	20	1	
65	10/1/01	1	1	20	1	
66	10/1/01	1	1	20	1	
67	10/1/01	1	1	20	1	
68	10/1/01	1	1	20	1	
69	10/1/01	1	1	20	1	
70	10/1/01	1	1	20	1	
71	10/1/01	1	1	20	1	
72	10/1/01	1	1	20	1	
73	10/1/01	1	1	20	1	
74	10/1/01	1	1	20	1	
75	10/1/01	1	1	20	1	
76	10/1/01	1	1	20	1	
77	10/1/01	1	1	20	1	
78	10/1/01	1	1	20	1	
79	10/1/01	1	1	20	1	
80	10/1/01	1	1	20	1	
81	10/1/01	1	1	20	1	
82	10/1/01	1	1	20	1	
83	10/1/01	1	1	20	1	
84	10/1/01	1	1	20	1	
85	10/1/01	1	1	20	1	
86	10/1/01	1	1	20	1	
87	10/1/01	1	1	20	1	
88	10/1/01	1	1	20	1	
89	10/1/01	1	1	20	1	
90	10/1/01	1	1	20	1	
91	10/1/01	1	1	20	1	
92	10/1/01	1	1	20	1	
93	10/1/01	1	1	20	1	
94	10/1/01	1	1	20	1	
95	10/1/01	1	1	20	1	
96	10/1/01	1	1	20	1	
97	10/1/01	1	1	20	1	
98	10/1/01	1	1	20	1	
99	10/1/01	1	1	20	1	
100	10/1/01	1	1	20	1	

ANGLES						
FIREPLACE		FRAME		DICALDIES		
1	24" x 36"	35x35	3/8"	60x60	18x18	8x8
2	35" x 37"					

01

PLATES (CONT'D)

FLOORS		WALLS			
4	10'-0" x 10'-0"	2'-0"	56' x 10'		660
2	10'-0" x 10'-0"	2'-0"		354'	
2	10'-0" x 10'-0"			347'	
2	10'-4" x 10'-0"			334'-0"	
2	10'-0" x 1'-0"	2'-0"		41'-3"	
2	9'-0" x 9'-0"			456'	
2	8'-0" x 10'-0"			463'	
2	8'-0" x 5'-0"	2'-0"		512'	
2	8'-0" x 8'-0"	2'-0"		541'-0"	
8	8'-0" x 8'-0"			576' x 13' 3/4"	
4	8'-0" x 8'-0"	2'-0"		704' x 13'	660
2	5'-0" x 8'-0"			718'	
2	6'-0" x 8'-0"	2'-0"		801'	

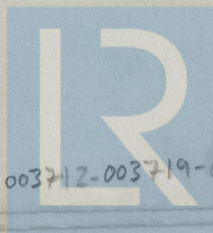
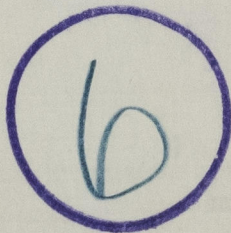


CLELANDS (SUCCESSORS) LTD.
WALLSEND
NORTHUMBRIA.

"SLANEY" ★

Framing plan

RECORDS DEPT.
LONDON



003712-003719-0042

© 2021

Lloyd's Register
Foundation