

Office

N° 146 SHIP & N° 147.

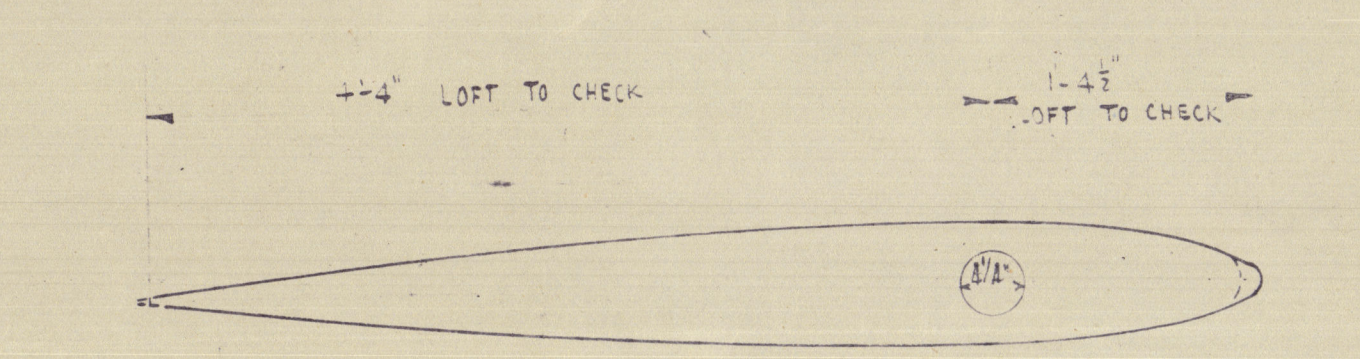
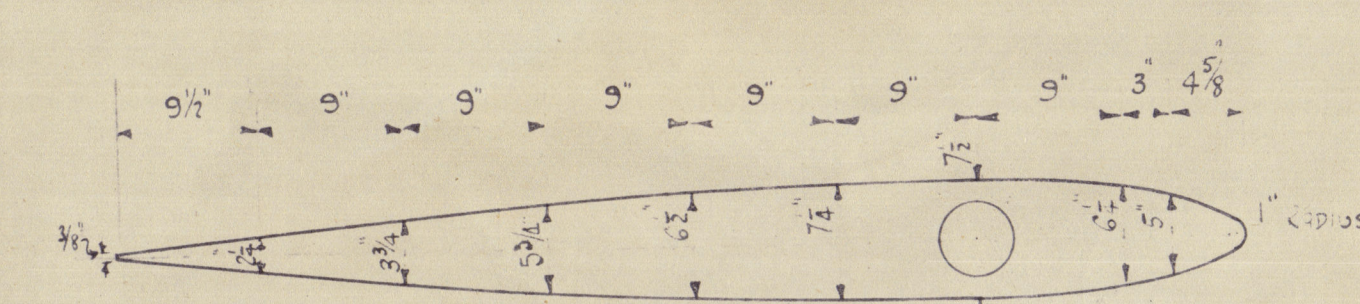
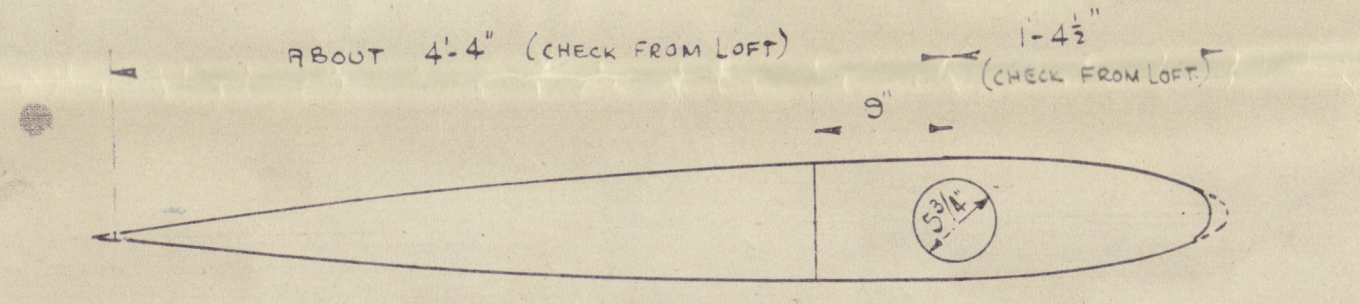
STERNFRAME & RUDDER

SCALE 1" = 1 FOOT

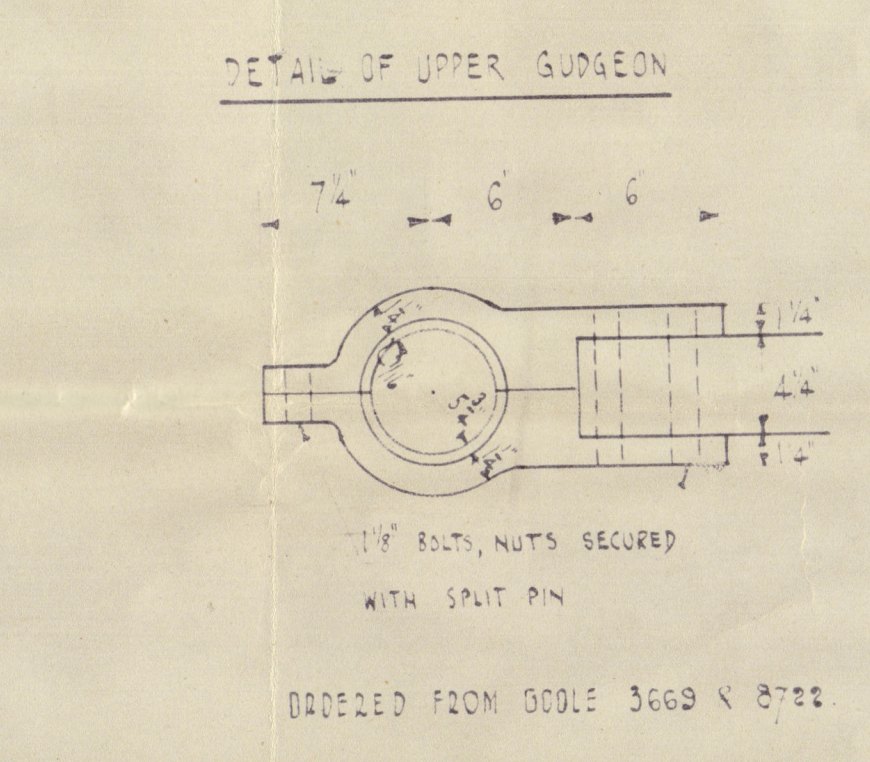
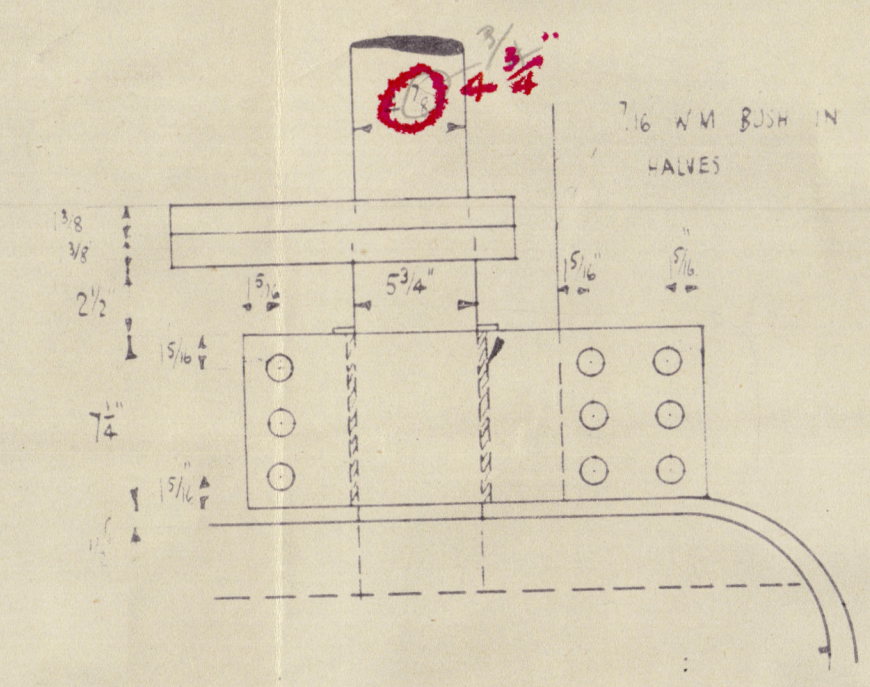
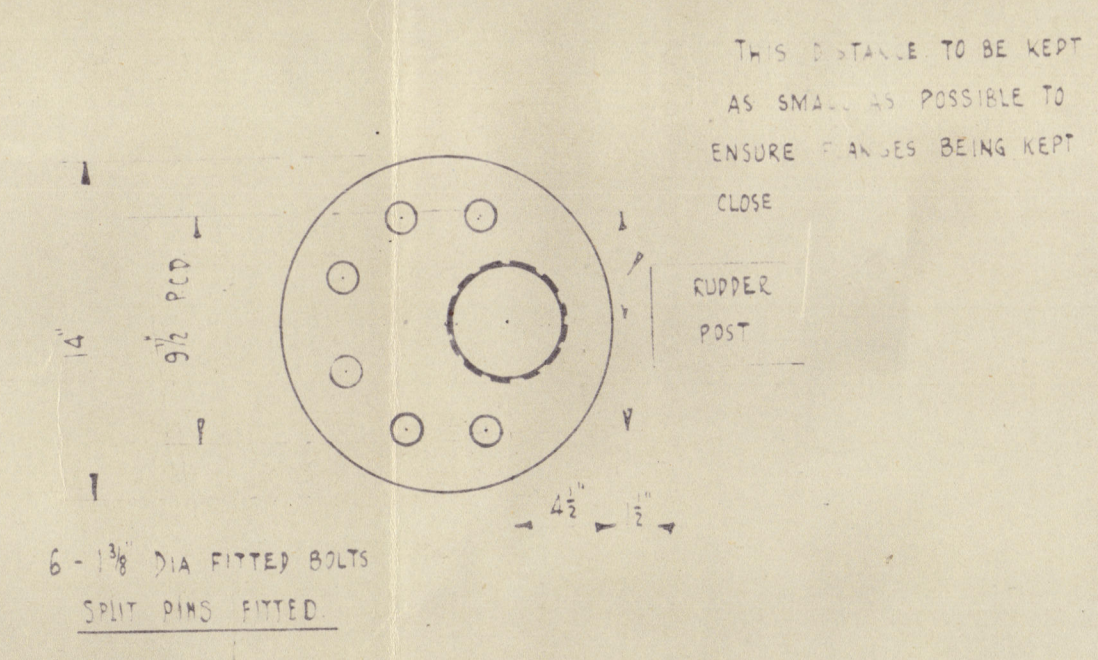
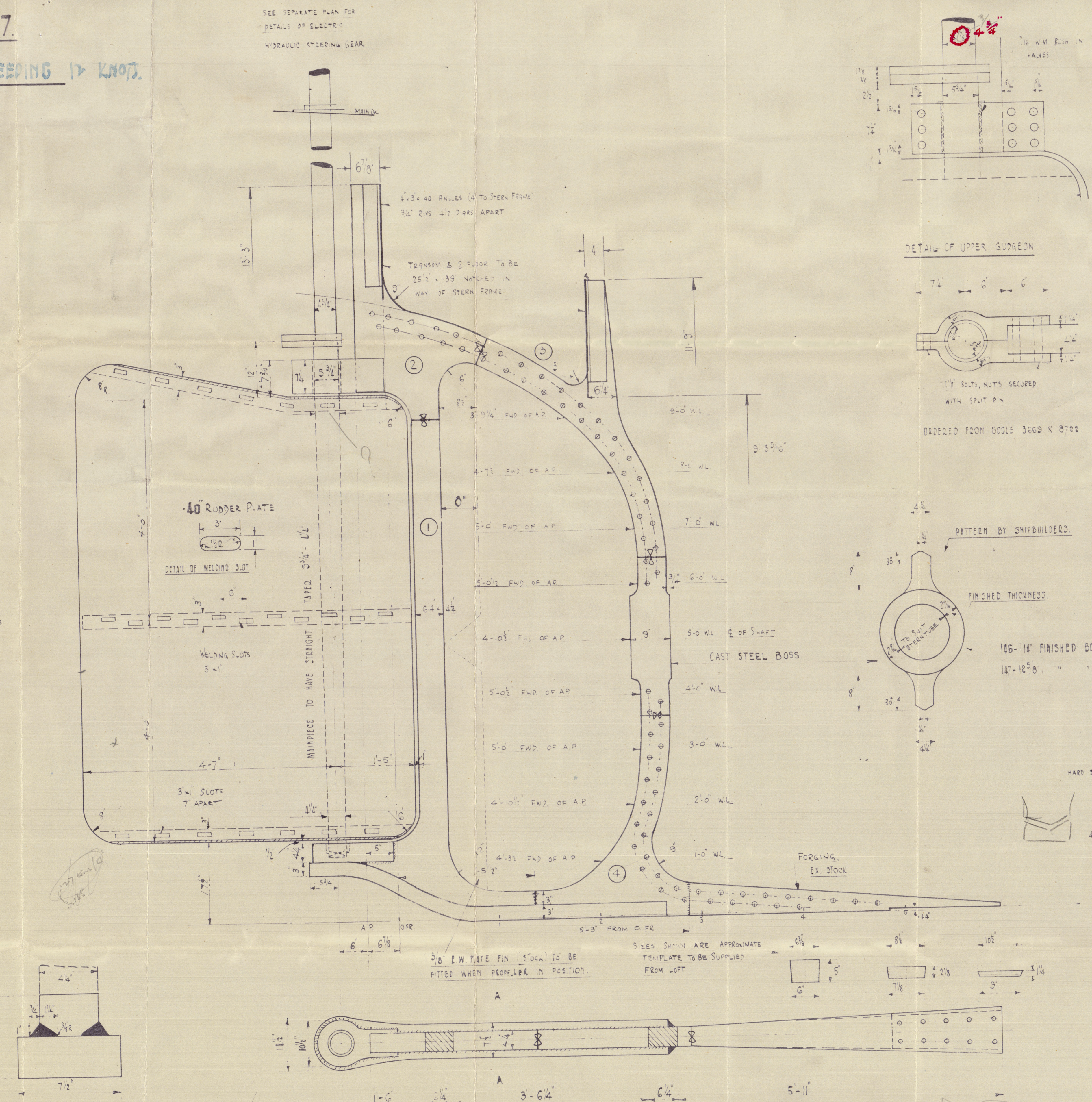
$A \times D = 49 \times 1.63 = 79.87$

SPEED OF VESSEL NOT EXCEEDING 17 KNOTS.

APPROVED BY LLOYDS. 15/7/48.



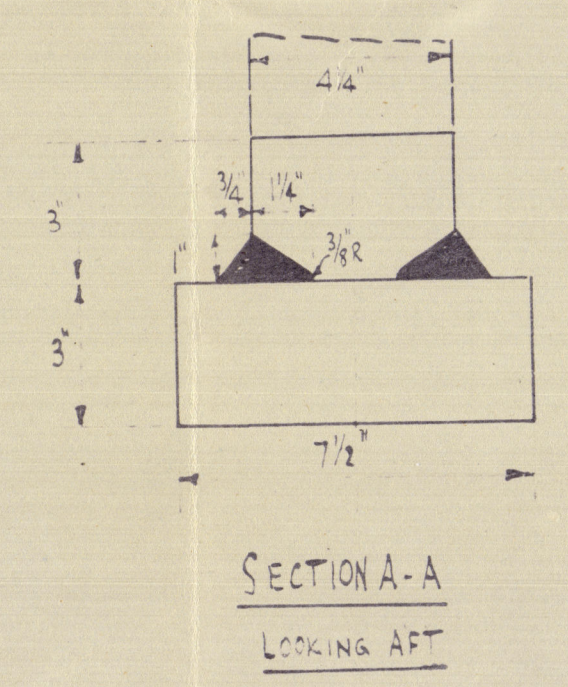
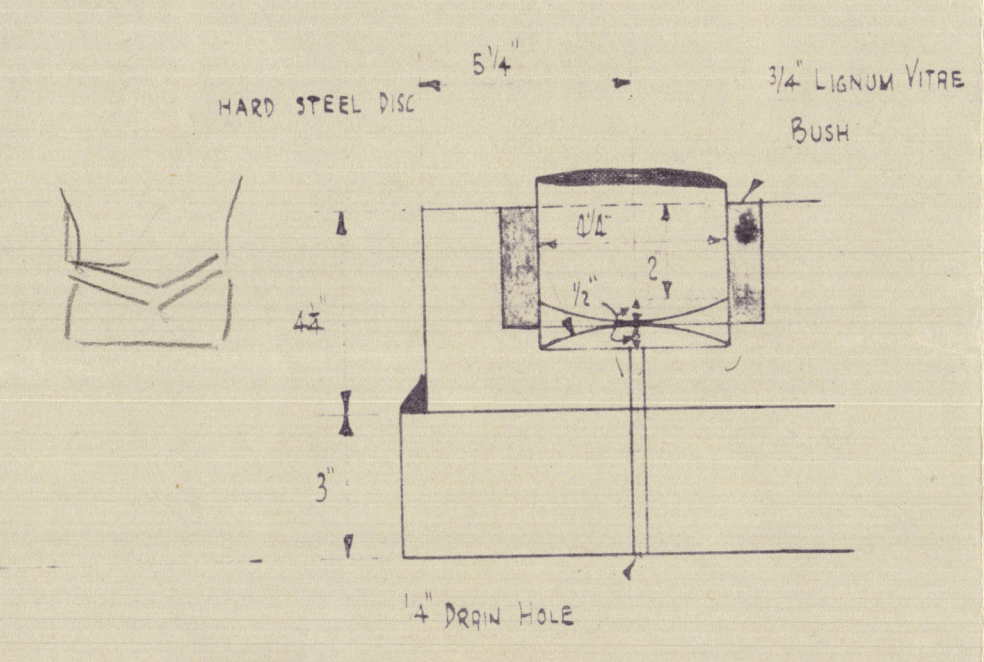
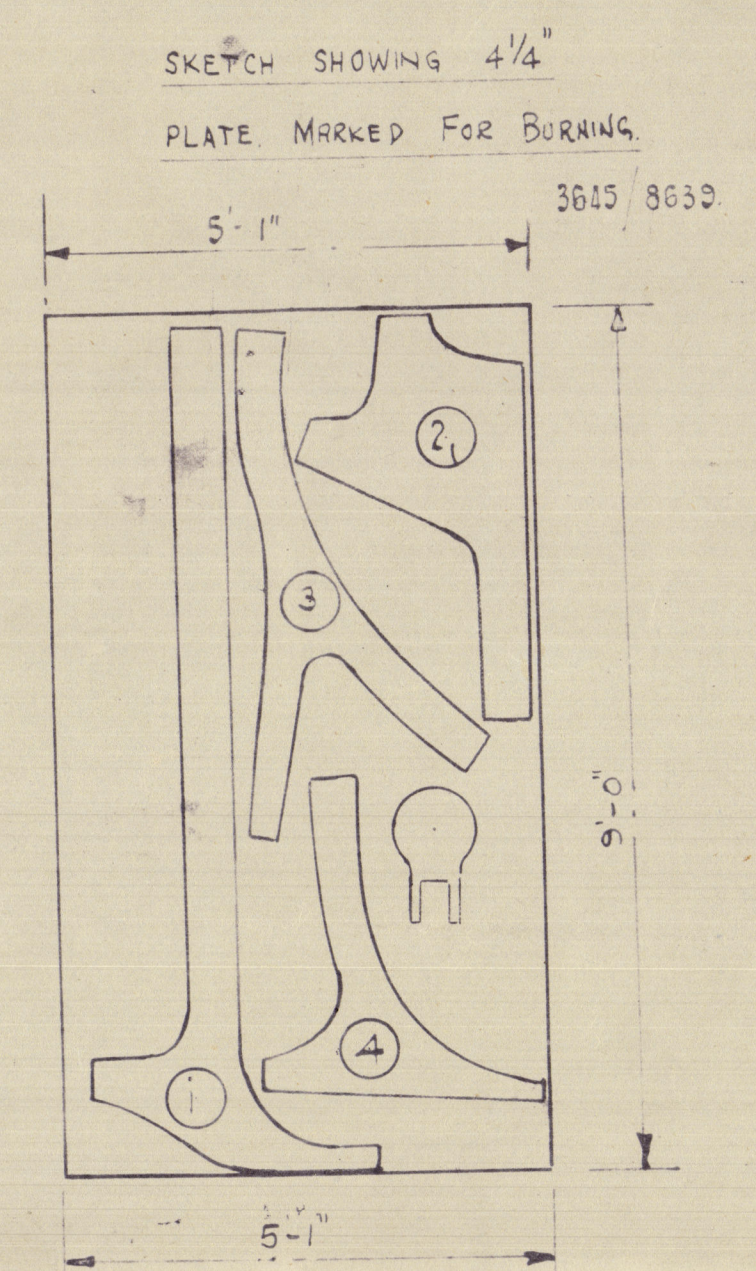
Similar to Ship No. 146



SKETCH	POSITION	NO. OF RUNS	GAUGE & LENGTH OF RUN	AMPS	ELECTRODES	REMARKS
	STERN FRAME BUTTS	1	4/6 1/2	230	APPROVED GENERAL SERVICE	DOWN HAND WELD
	FILLET WELDS RUDDER ARMS TO PORT SIDE	6	4/14 1/2			
	FILLET WELDS RUDDER ARMS TO PORT SIDE	1	4/2 3/8			
	RUDDER ARM CONNECT. TO STOCK	6	4/14 1/2			RUDDER ARMS SHRUNK ON TO STOCK BEFORE WELDING
	FILLET WELDS RUDDER ARMS TO PORT SIDE	1	4/2 3/8			
	SOLE PLATE CONNECTION	11	4/14 1/2			DOWN HAND WELD
	RUDDER PIN COUPLING	4	4/14 1/2			
	DEEP PENETRATION TO BE ASSURED					
WELDING PROCEDURE TO SURVEYORS SATISFACTION						

CLELANDS (SUCCESSORS) LTD
WALLSEND. DRAWN BY K 23.4.48

RUDDER PLATE 2 @ 8'-9" x 6'-7 1/2" x 1/2" S.T. 3650/8781
SOLE PIECE 3' PLATE FROM STOCK
COUPLING PIECES 1 1/2" PLATE FROM STOCK



RECORDS DEPT.
LONDON

"SLANEY" ¹ ✱

M/V Loch Fisher

19

CLELANDS (SUCCESSORS) LTD.

YARD NO 147

STERNFRAME & RUDDER



© 2021

London's Register
Foundation

