

# Lloyd's Register of Shipping.

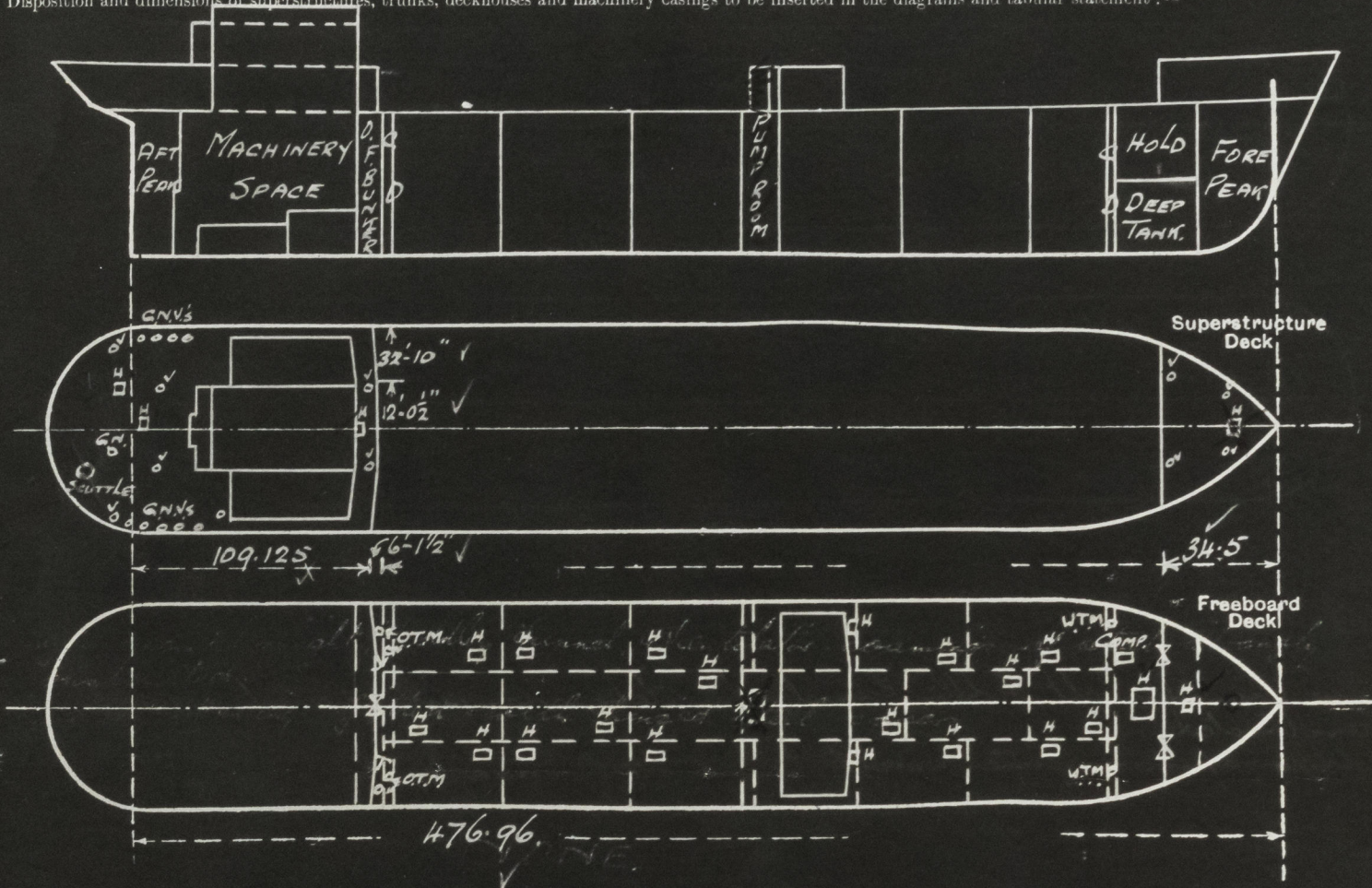
## SURVEYS FOR FREEBOARD.

(CONDITIONS OF ASSIGNMENT.)

No 33312

Ship's Name *S.S. EMPIRE MARVELL* Port of Survey *Sunderland*  
 Official Number *169015* Surveyor's Signature *W. C. Miller*  
 Nationality and Port of Registry *BRITISH SUNDERLAND* Date of Survey *During Construction*

Disposition and dimensions of superstructures, trunks, deckhouses and machinery casings to be inserted in the diagrams and tabular statement:--



Particulars of Superstructures, Trunks, Casings, Deckhouses.

	Coaming	Plating	Stiffeners	Spacing	End Attachments of Stiffeners	Size of Openings	Height of Sills	Height of Casings
Poop Bulkhead ...	44"	44"	10" 3 3/4" 50' L	30"	Lugged top welded to deck	20 4'-6" x 2'-3" (a) 10 3'-0" x 4'-1" (b)	18"	7'-6" ✓
Raised Quarter Deck Bulkhead ...	✓	✓						
Bridge, After Bulkhead ...	✓	✓						
Bridge, Forward Bulkhead ...	✓	✓						
Forecastle Bulkhead ...	30"	30"	5" 3" 5/16" OA.	30"	Reacted to boundaries	20 4'-1" x 3'-1"	18"	7'-6" ✓
Trunk, Aft ...	✓	✓						
Trunk, Forward ...	✓	✓						
Exposed Machinery Casings on Freeboard or Raised Quarter Decks ...	✓	✓						
Exposed Machinery Casings on Superstructure Decks ...	34"	32"	5" 3" 3/8" L	30"	Continuous	NONE	✓	✓ ✓
Machinery Casings within Superstructures not fitted with Class I Closing Appliances ...	✓	✓						
Deckhouses on Flush Deck Ships ...	✓	✓						

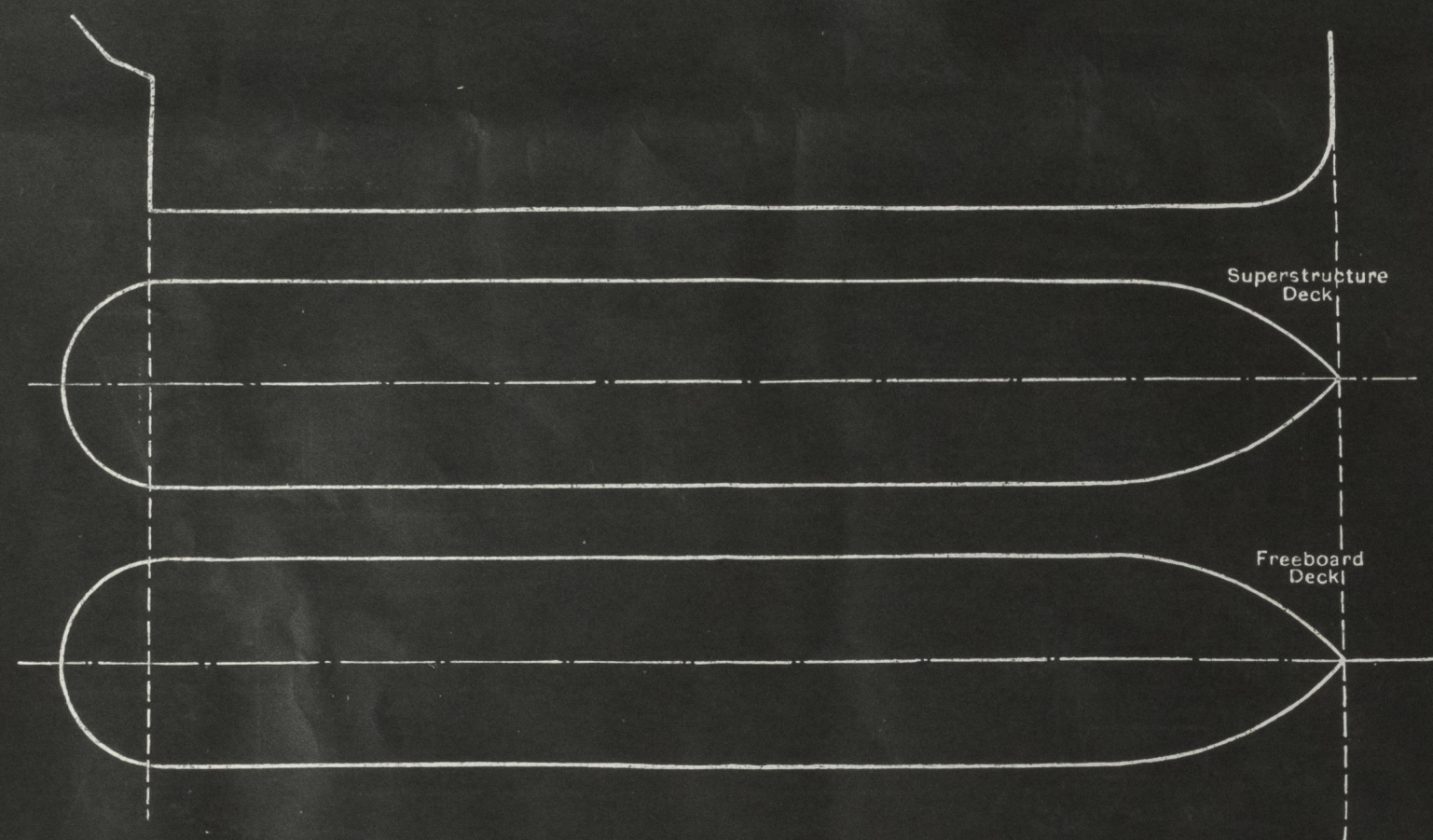
Particulars of Closing Appliances (state if capable of being manipulated from both sides).

Poop Bulkhead ...	(a) hecla type W.T. door (b) 3 1/2" wood covers in full height riveted channels.
Raised Quarter Deck Bulkhead ...	✓
Bridge, After Bulkhead ...	✓
Bridge, Forward Bulkhead ...	✓
Forecastle Bulkhead ...	3" wood covers in full height riveted channels. ✓
Exposed Machinery Casings on Freeboard or Raised Quarter Decks ...	✓
Exposed Machinery Casings on Superstructure Decks ...	✓
Machinery Casings within Superstructures not fitted with Class I Closing Appliances ...	✓
Deckhouses on Flush Deck Ships ...	✓



# PARTICULARS OF PROTECTION TO OPENINGS, ETC.

The following diagrams should be used to indicate the positions of cargo and coaling hatchways, gangway, cargo and coaling ports, ventilators, companionways, etc., which would affect the seaworthiness of the ship:—



Particulars of hiddle, funnel and ventilator coamings, engine room skylight and other openings in machinery casing tops and their means of closing:—

Engine Room Skylight, Hiddle, Funnel, & Ventilator coamings of steel strongly constructed.  
Hiddle openings fitted with hinged steel covers. ✓

Particulars of Flush Bunker Scuttles:—

NONE.

Particulars of Companionways:—

Forward Pump Room. plating 40, deck opening 3'2" x 2'9", door 4'0" x 2'3", coaming 19" ✓  
Heckle Sepple W.T. door.  
Pump Room Entrance plating 35 & 25, stiffeners 4" x 3" x 36 @ 23", beam 5" x 3" x 30 @ 30", 1 door 4'0" x 2'3", 18" coaming with heckle type door, 2 skylights 5'6" x 4'0". ✓

Particulars of Ventilators in exposed positions on freeboard and superstructure decks:—

Fore Deck. 2-9" Vents to Fore Deck. Coaming 36" x 32".  
2-15" " " Forward Hold " 36" x 36"  
Poop Deck. 6-6" " " Store, Steering Gear, etc. " 30" x 30"  
11-5" G.N. " " Washhouse etc. 18" to lip.  
Upper Deck. 1-9" " " Ford Pump Room Coaming 36" x 32". ✓

Ventilator fitted with wood plug & canvas cover.

Particulars of Air Pipes in exposed positions on freeboard, raised quarter, or superstructure decks:—

Air pipes on Poop Deck to O.B. tanks 18" to lip. ✓  
Air pipes on Upper Deck 36" to lip. ✓

Air pipes fitted with wood plug & canvas cover.

Particulars of Gangway Cargo and Coaling Ports:—

NONE.

Particulars of Scuppers and Sanitary Discharge Pipes:—

4-6" x 2 1/2" slots cut in stringer angle, each side, to drain upper deck.  
Discharges from spaces on or above freeboard deck, led to N.R. valves on shell, below freeboard deck. ✓

Particulars of Side Scuttles:—

10" dia. sidelight to Accom<sup>2</sup> in Poop Tween Decks, fitted with substantial hinged deadlights. ✓

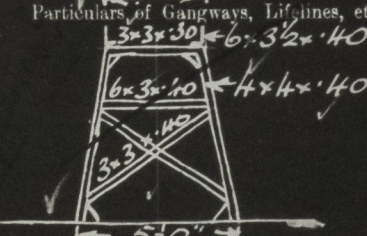
Vertical distance of Sill of lowest Side Scuttle above top of keel

42'-6" ✓

Particulars of Guard Rails:—

Steel Bulwark 3'-6" high in way of midship deckhouse, and at ends of poop & fore decks. On Poop & fore decks, and on remainder of upper deck, rails 3'-6" high, stanchions 2 1/2" x 1 1/2" flat welded to deck, spaced 5'-0" apart, 3 rails on poop & upper deck, 2 rails on fore deck. ✓

Particulars of Gangways, Lifelines, etc.:—



Gangway 7'-6" to 7'-0" high from poop to bridge, and from bridge to foremast, with 1/4" chequered plating. Supports 9'-6" to 9'-10 1/2" apart, fore & aft bracing 3' off aft, & 2' off forward. Lifelines from ladder on forward gangway to forecastle. ✓

## Particulars of Freeing Arrangements.

	Length of Bulwark	Height of Bulwark	Size of Freeing Ports	Number each side	Area each side	Rule area each side
After Well ...	✓					
Forward Well ...	✓					
State position of each freeing port ... After Well:— ✓						
(F. and A. position and height above deck edge) Forward Well:— ✓						
State whether the freeing ports are fitted with shutters, bars, or rails, and give particulars of such:— ✓						
Additional area where sheer is less than standard. ✓						



© 2020

Lloyd's Register Foundation



### PARTICULARS OF PROTECTION TO OPENINGS, ETC

## HATCHWAYS ON FREEBOARD AND SUPERSTRUCTURE DECKS.

Description of Hatchway		...	...	...	...
Dimensions of Hatchway		...	...	...	...
COAMINGS	Height above Deck	...	...	...	...
	Thickness	...	Sides	...	...
	Stiffeners	...	Ends	...	...
	Brackets, Stays	...	...	...	...
HATCH BEAMS	Number	...	...	...	...
	Spacing	...	...	...	...
	Scantling and Sketch	...	...	...	...
	Bearing Surface	...	...	...	...
FORE AND AFTERS	Number	...	...	...	...
	Spacing	...	...	...	...
	Unsupported Lengths	...	...	...	...
	Scantling and Sketch	...	...	...	...
HATCH COVERS	Material	...	...	...	...
	Thickness	...	...	...	...
	How fitted	...	...	...	...
	Bearing Surface	...	...	...	...
Spacing of Cleats		...	...	...	...
Number of Tarpaulins		...	...	...	...

- Are wood fore and afters steel shod at all bearing surfaces ?
- Are battens and wedges efficient and in good condition ?
- Are tarpaulins in good condition and in accordance with rule requirements ?
- Are lashings provided in accordance with rule requirements ?

Particulars of any special features :—

Endorsement at first survey and at surveys for renewal of Certificate :—

The fittings and appliances are in accordance with the particulars shown on this form (or as now modified) and are in good condition.