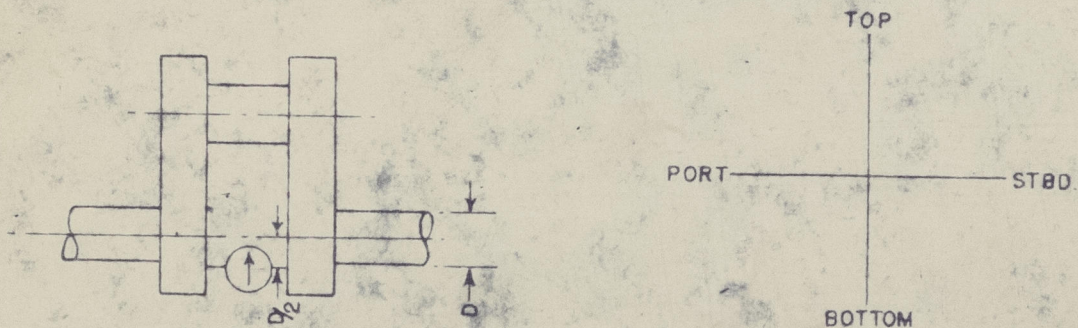


SHIP M/S REGENT JAGUARENGINE KINCAID B&W, 6 CYL 740X1500
455ADATE OCT 29th 1953
6 PM.

DEFLECTION READINGS ON CRANKSHAFT



CYLINDER NO.	POSITION OF CRANKPIN				MAX DEFLECTION	REMARKS
	TOP	PORT	BOTTOM	STBD.		
1	+2	+1	0	+1	+2	
2	-2	+2	0	-2	+2	
3	+3	+2	0	0	+3	
4	+9	+4	0	+8	+9	
5	-3	-3	0	+3	+3	
6	+7	+4	0	+3	+7	
7						
8						
9						
10						
11						
12						
13						
14						
15						
16						

YARD BETH STEEL CO, HOBOKENTAKEN BY J. J. Nielsen

FIG. 4

© 2020

Lloyd's Register
FoundationREADINGS TAKEN IMMEDIATELY BEFORE VESSEL DEPARTURE
READINGS IN $\frac{1}{1000}$ INCH

003106-003111-0205

"Regent Tanager"

Rpt No. N.Y.B. 52964



© 2020

Lloyd's Register
Foundation