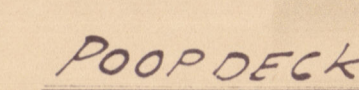


7/1/29

SCALE: $\frac{1}{8}" = 1'-0"$



DIMENSIONS	
LENGTH BETWEEN PP	435'-0"
BREADTH MOULDED	36'-0"
DEPTH TO UPPERDECK	39'-0"
" " SECONDDECK	30'-6"
" " THIRDDDECK	24'-6"
HEIGHT OF POOP	7'-6"
" " FORECASTLE	7'-6"

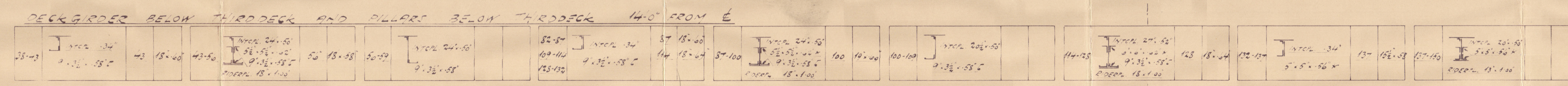
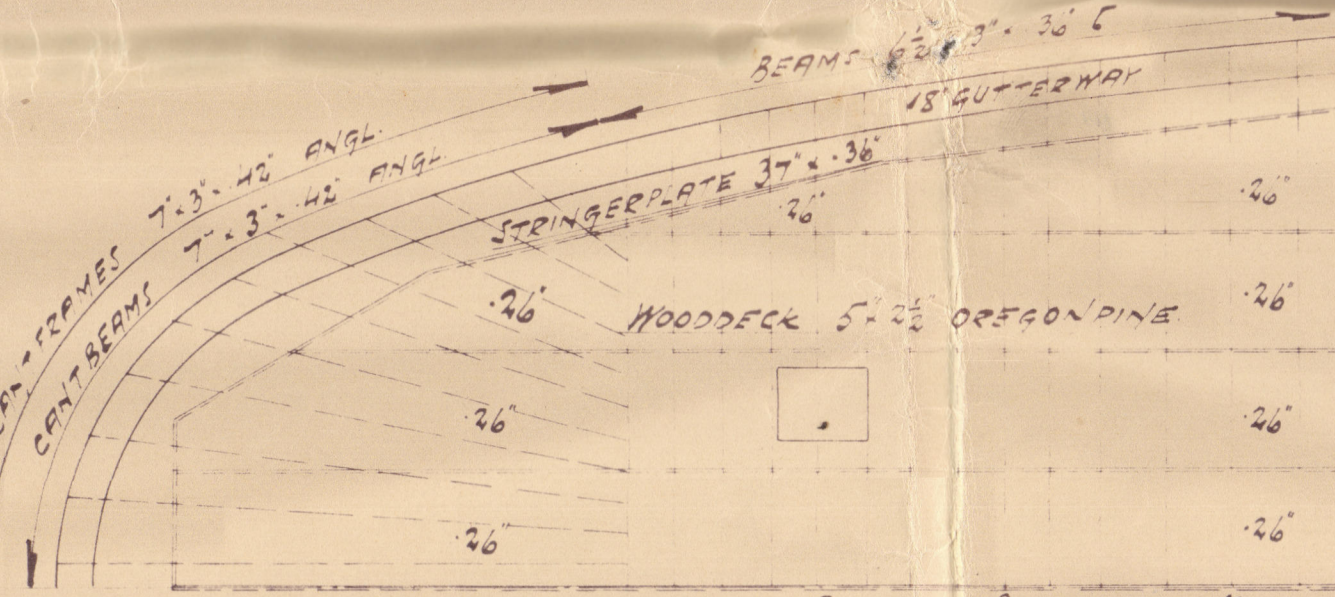
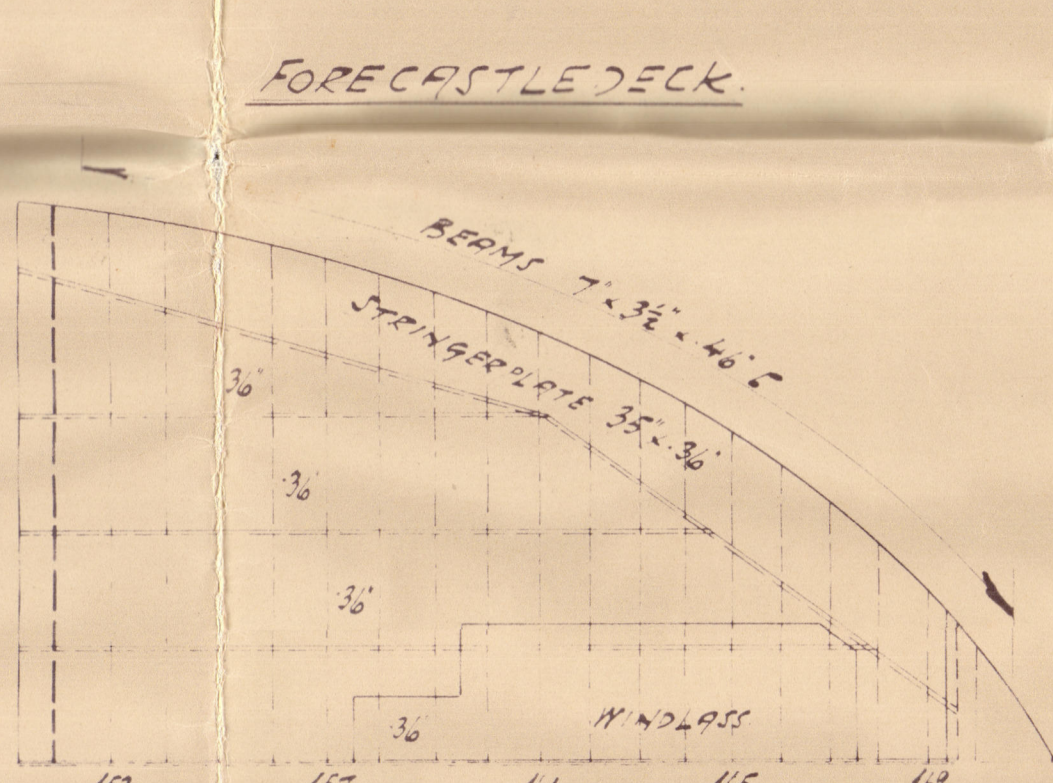
NUMERALS:
 $D = 30'6'' + 8'0'' = 38'6''$
 $L = 435' - 385' = 16'47.5''$
 $L(B+D) = 435'(50' - 38'5'') = 435' \cdot 945'' = 41107.5''$
 $d = 17.67$ $\frac{L}{D} = \frac{435'}{39} = 11.15$

OWNER REQUIREMENTS

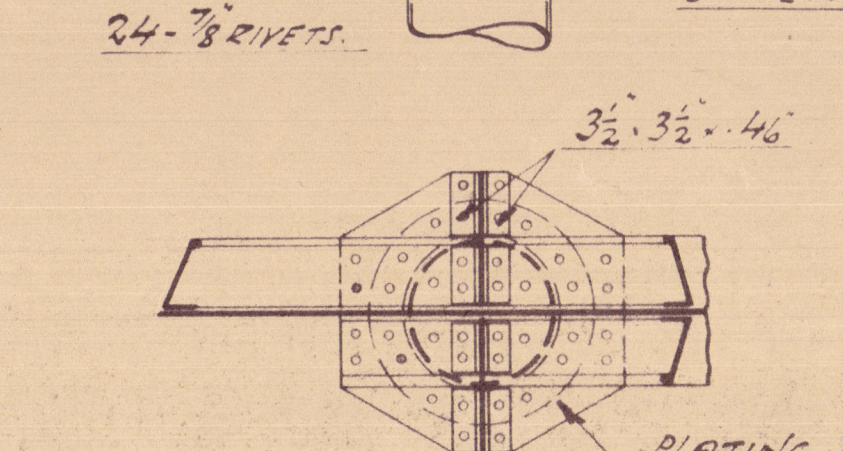
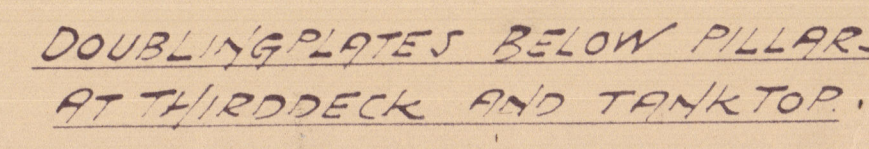
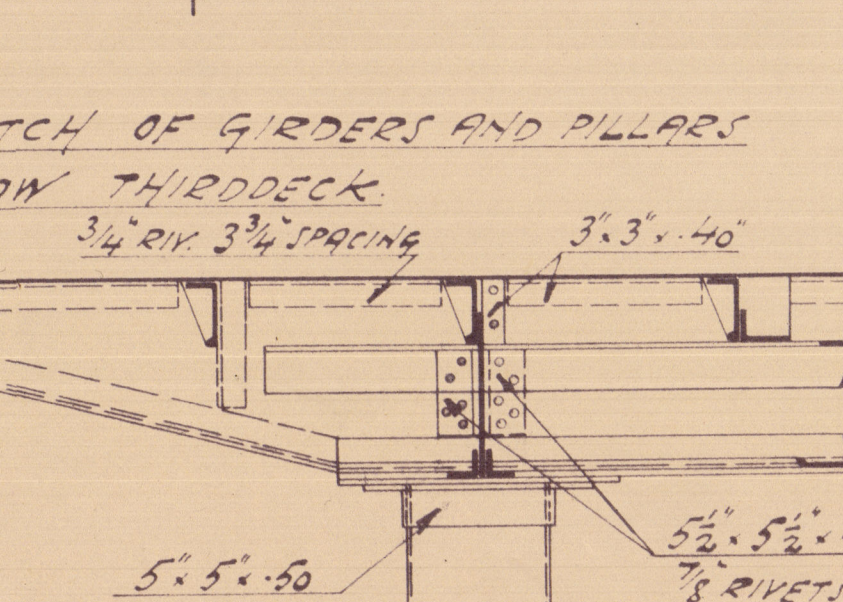
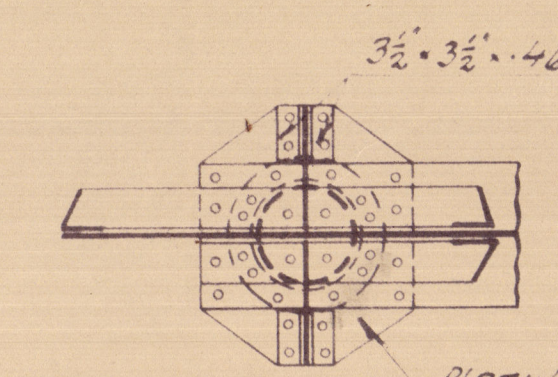
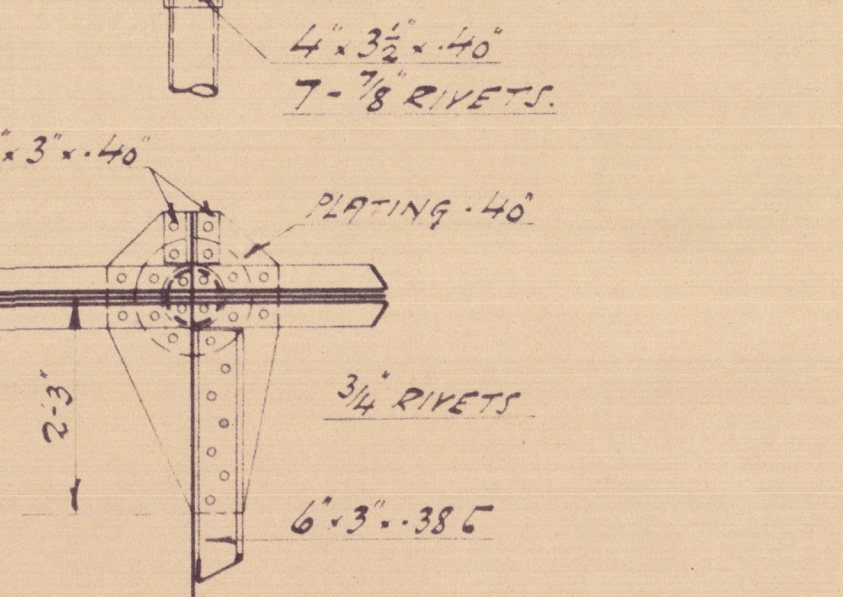
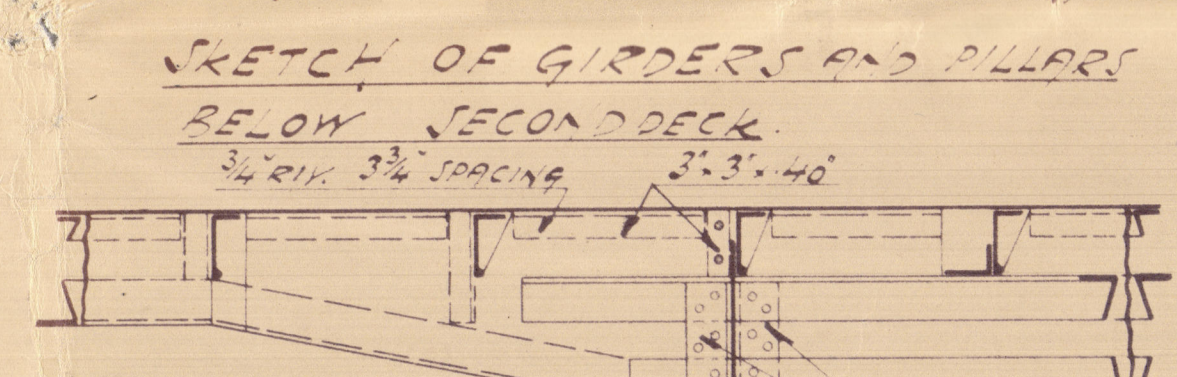
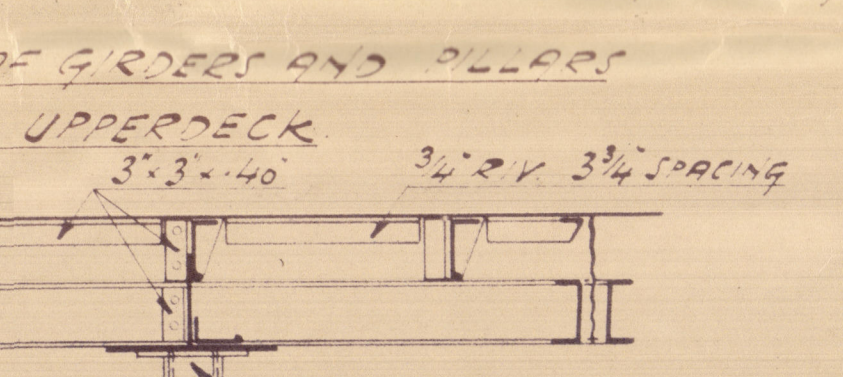
SWAYLING INCORPORATED TO FULFILL THE REQUIREMENTS
CORRESPONDING TO A DRAUGHT OF 28'-0"
HEADSTAYS ARE ACCEPTED WITH 10%
STRESS ALLOW - - - - - 25%
WELL STAYS ALLOWED TO BE ACCEPTED
WITH 10% TO 40% AMPLITUDE
UNDERDECK STAYS REPEATED AND TWO 9:05-9
DECK STAYS TO BE ACCEPTED WITH 25%

TYPE: COMPLETE SUPERSTRUCTURE VESSEL
CLASS: LLOYDS CLASS + 100-A-1
DOUBLE BOTTOM AND FOREPEAK
INTENDED TO CARRY OIL FUEL

with freeboard corresponding to a draught not exceeding that contemplated by the Rules for a complete superstructure vessel having a tonnage opening.



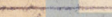
BUTTS OF GIRDER PLATES, BARS AND CORRELATES to be efficiently strapped.



ODENSE STAALSKIBSVÆRFT
VED A. P. MØLLER
27/2-18/100

W. J.
Y. 1. 20

35
1
1/2 = 10°
K.C.
Mr.
02-10-08


 PROFILE AND DECKPLANS
 Lloyd's Register
 Foundation

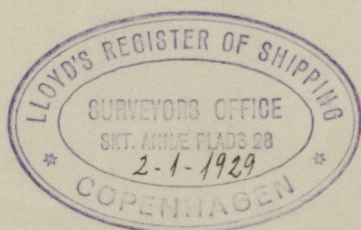
corr 20-12-1965
005706-0

— PROFILE & DECKS —

— SHEWING ARRANGEMENT OF BULKHEADS. —

— No. 35 —

— ODENSE STAALSKIBSVÆRFT —



m/s. Laurits Swenson. *

Epri. Rpt. No. 8167.

RETAIN



© 2020

Lloyd's Register
Foundation

003706-003711-0128