



No 245

PROPOSED STERNFRAME FOR COMPLETE SUPERSTRUCTURE VESSEL

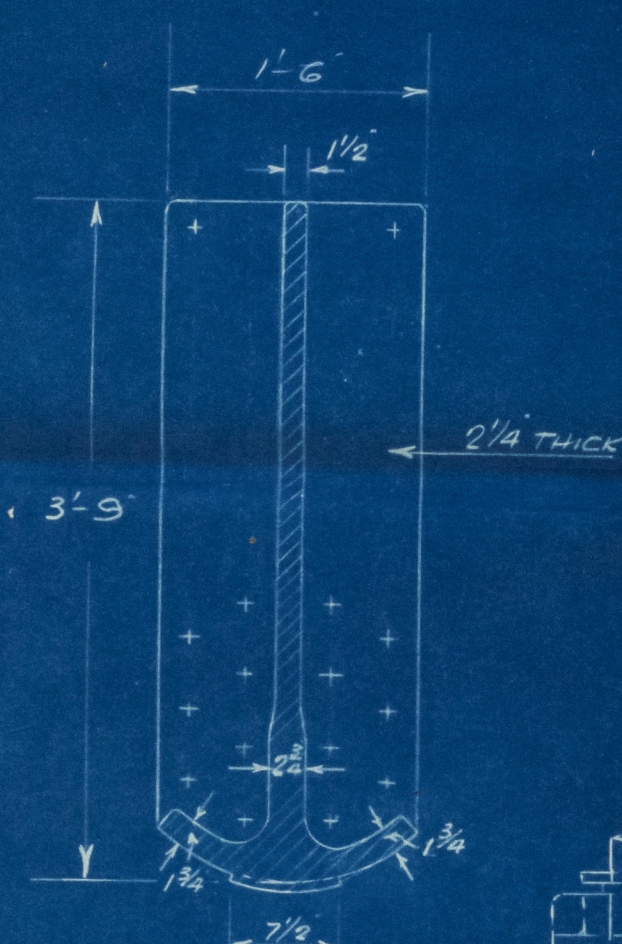
MATERIAL - CAST STEEL

SCALE - 1/2" = 1'-0"

L x D (395 x 34.87) - 13773

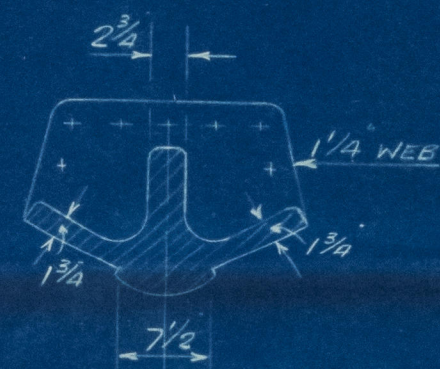
TO PASS LLOYDS SURVEY

SECTION AT TRANSOM

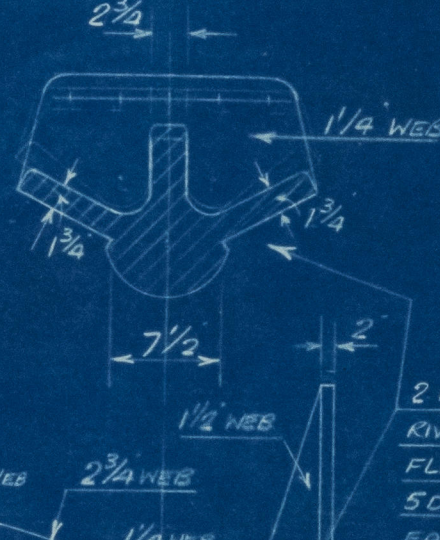


SECTIONS DRAWN LOOKING AFT
SCALE - 1" = 1'-0"

SECTION AT FR 1



SECTION AT FR 2

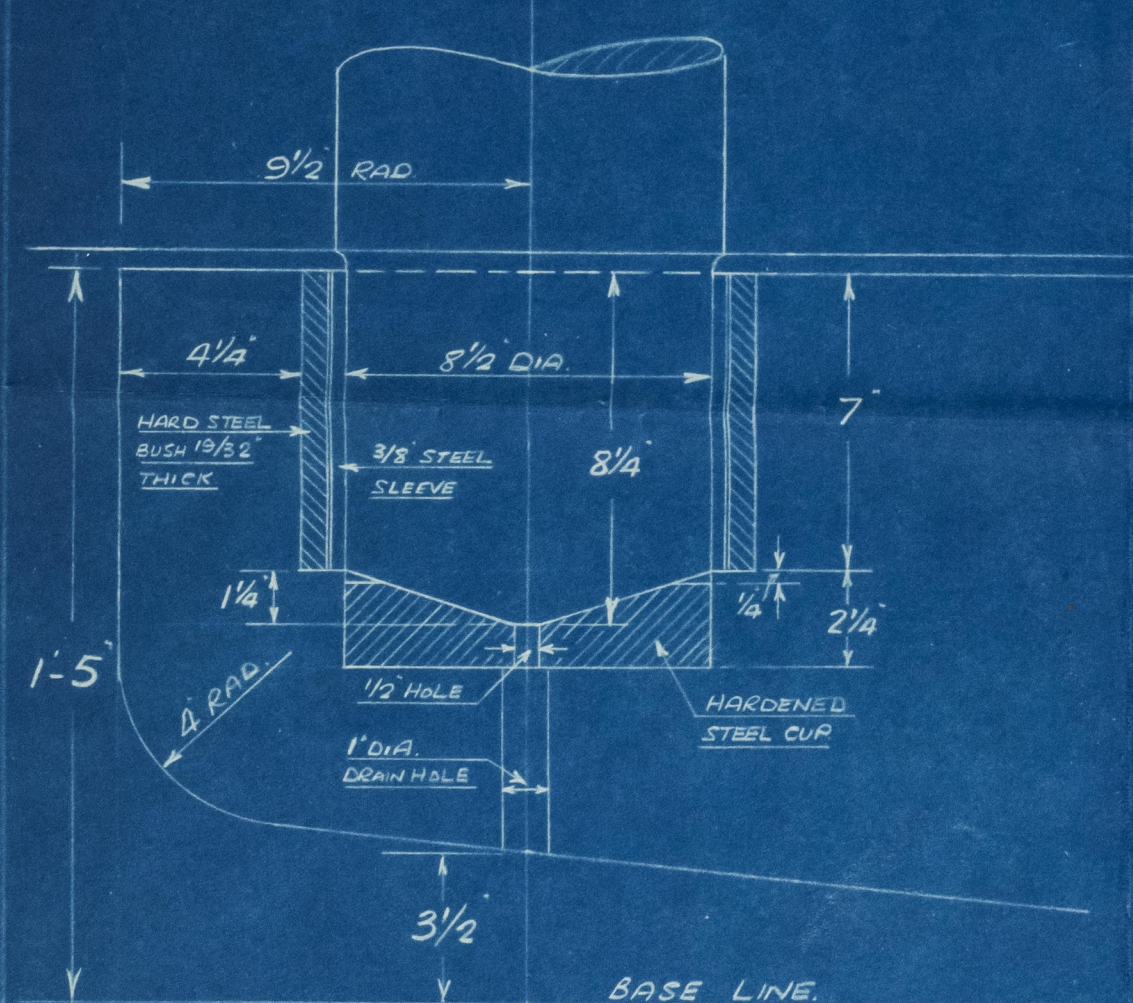


SECTION AT FR 3

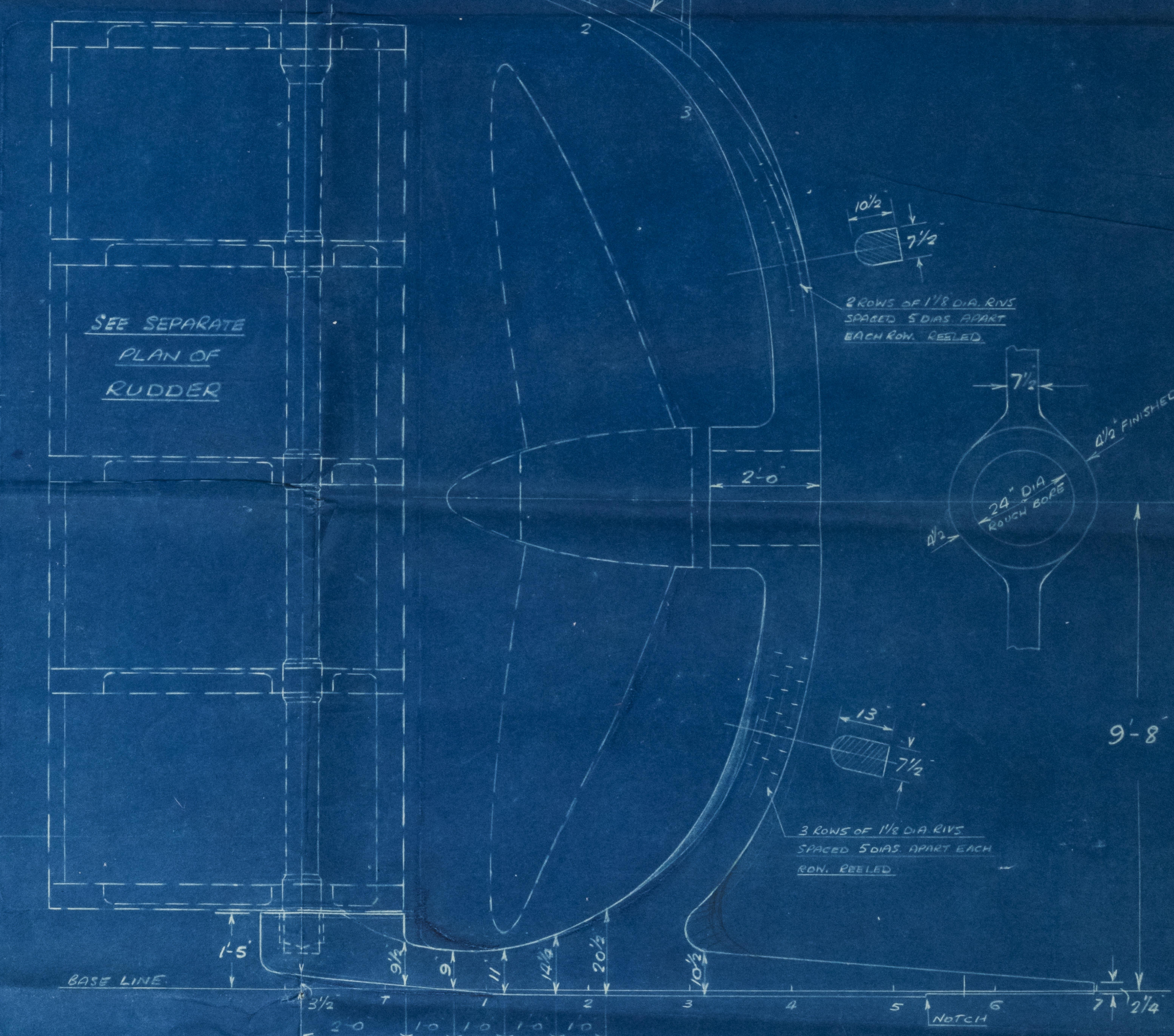


DETAIL OF BOTTOM GUDGEON

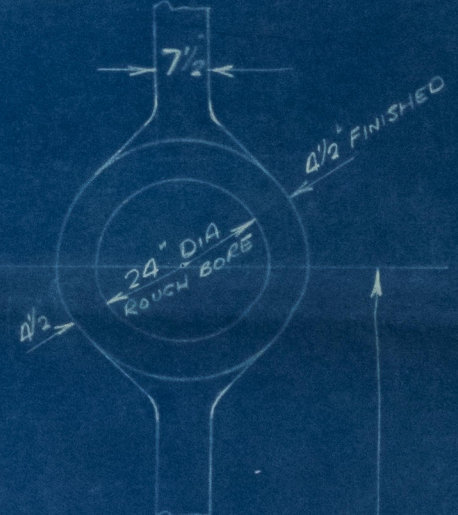
SCALE - 3" = 1'-0"



SEE SEPARATE
PLAN OF
RUDDER

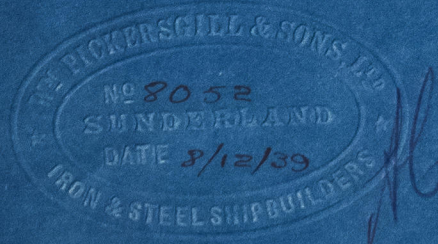


2 ROWS OF 1 1/8 DIA. RIVS.
SPACED 5 DIA. APART
EACH ROW. REELED



3 ROWS OF 1 1/8 DIA. RIVS.
SPACED 5 DIA. APART
EACH ROW. REELED

FRAMES SPACED 24" APART



Messrs Wm. Pickersgill & Sons, Ltd.
Sunderland



14.12.39

003706-003711-0093

Wm. Pidgeon & Sons

No. 245

Stentance

S. "Stanford"

SUNDERLAND. No 33049

J. L. M. X.



© 2020

Lloyd's Register

Foundation

003706 003711-0043