

Glasgow.

M/V "SAINT ELINAN" - Damage Repairs:-

2.

STARBOARD SIDE:-A. STRAKE:- Nos 3 and 4 plates removed, faired and replaced. (2)B - - - :- Nos 3 and 4 plates do. do. do. (2)B - - - :- No 5 plate faired in place. (1)FLOOR PLATES:- 8 renewed. 6 removed faired and replaced.REV. FRAMES on top of floors:- 8 renewed. 6 removed, faired and replaced.CENTRE LINE KEELSON:-

15 Intercostal plates renewed.

Double angles on top of floors cropped, part removed and replaced by Double bulb angles.

INNER SIDE KEELSON (port & starboard)

12 Intercostal plates on each side renewed

Single angle on top of floors cropped, part removed and replaced by Double bulb angles.

MAIN FRAMES:- Port side:- 7 removed faired and replaced.
9 faired in place.

Starboard side:- 16 frames faired in place.

WEB PLATE on Collision Bulkhead, extended Aft to line of Fore peak tank end floor plate.Extra Strengthening fitted at this time:-

(1). Floor plates in frames 56 to 63 inclusive, removed and replaced by plates .50 thick, (in lieu of .28)

(2). Reverse frames in way of above floor plates removed and replaced by bars $\frac{3}{8}$ " thick (in lieu of .28)

(3). Centre Line Keelson:-

Intercostal plates from frame 49 forward to fore peak tank end floor plate removed, and replaced by plates .50 thick, (in lieu of .32)

The above mentioned intercostal plates connected to floor plates by double vertical angles (in lieu of single angle connection)

Double angles $4 \times 3 \times .40$ on top of floors from frames 44 & 46 forward to fore peak tank end floor plate removed, and replaced by Double bulb angles $9 \times 3\frac{1}{2} \times .42$.

(4). Inner Side Keelson on each side:-

Intercostal plates from frame 52 forward to fore peak tank end floor plate removed and replaced by plates .50 thick, (in lieu of .28)

Intercostal plates from frame 48 forward to fore peak tank end floor plate connected to floor plates by single vertical angle (no connection originally.)

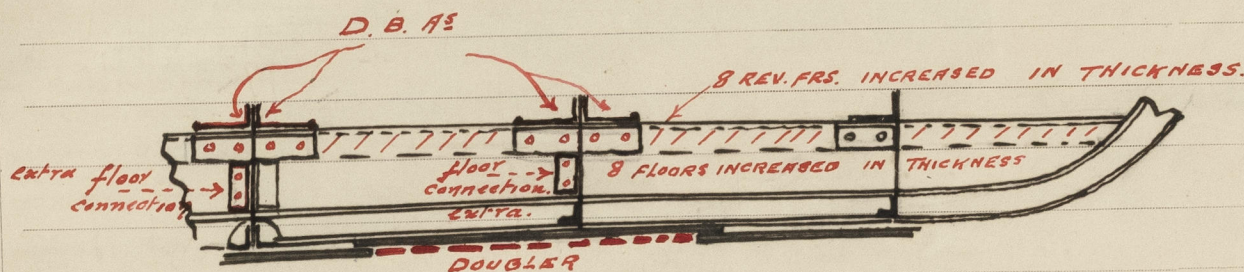
Single angle $6 \times 3 \times .46$ on top of floors from frame 48 forward to fore peak tank end floor plate removed and replaced by Double bulb angles $9 \times 3\frac{1}{2} \times .42$.

M/V SAINT EUNAN:-3

- (5) Web plate to Collision bulkhead and fore peak tank slope
 extended aft to line of fore peak tank end floor plate
 connected to deck and fore peak tank slope and
 supported by vertical stiffeners 6" x 3" x .35 bulb angles.

(6) Shell Plating:-

A. STRAKE:- (port & starb. sides) doubled by .40 plate
 extending from frame 54 to frame 66.



Fuller particulars see four sketches forwarded herewith.

M.H.