

# M.V. "SAINT EUNAN" MIDSHIP SECTION MLD.DIMS. 143'0" x 24'0" x 12'0" TO CLASS LLOYD'S 100 A.I. ✱ SCALE 1/2" = ONE FOOT.

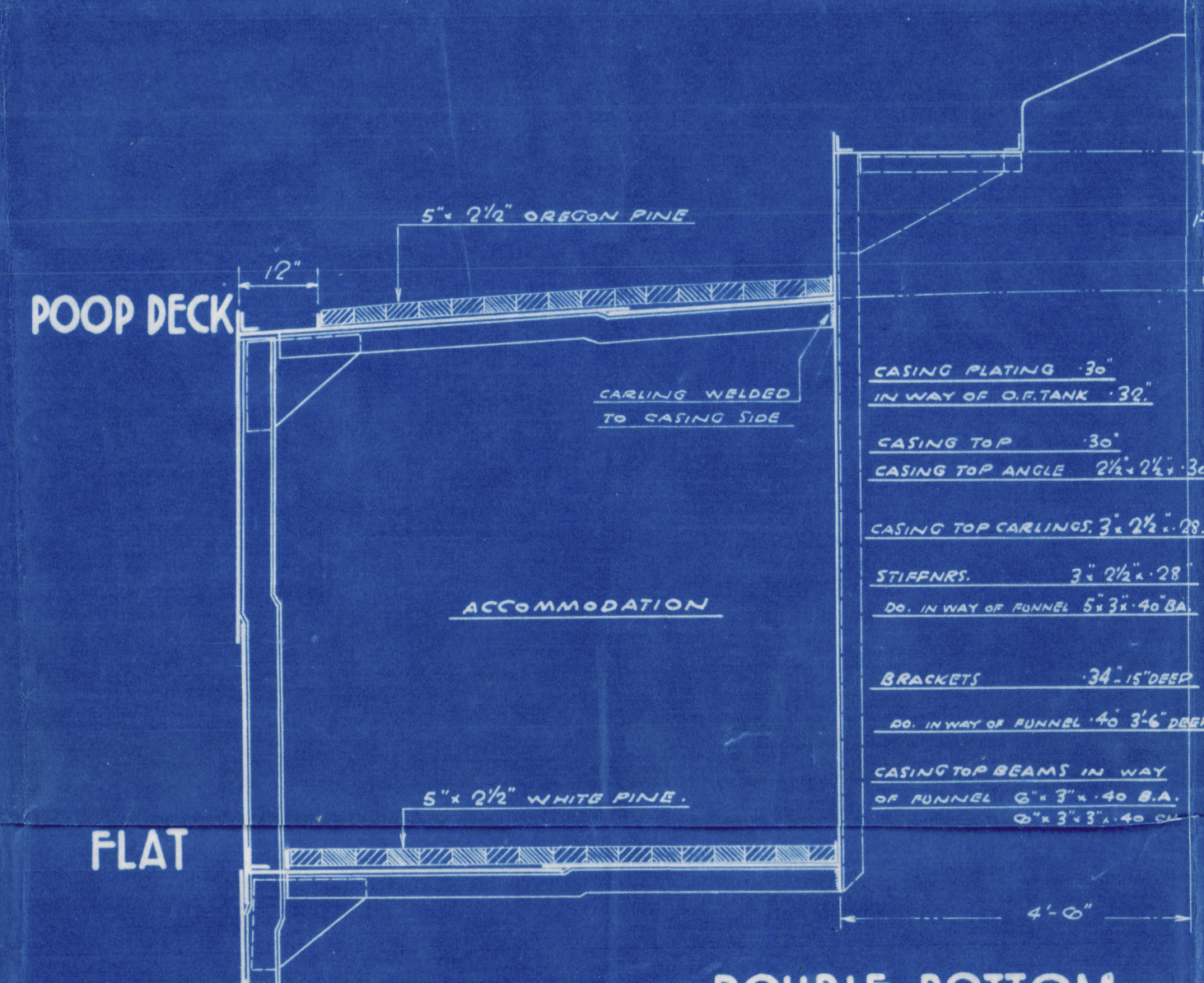
LLOYD'S NUMERALS	
L	142.0
B	24.0
D	12.0
L x D	1716.0
L x (B+D)	5148.0
L/D TO UPPER DECK	11.92
L/D TO R.O.D.	9.38
D TO UPPER DECK	10.71

LONGITUDINAL NUMBER L(B+D)	5148.00
R.O. DECK	56 x 3.25
POOP	30.5 x 7 x .75
FORECASTLE	21 x 9.75 x .75
BRIDGE HOUSE	8.5 x 9.75 x .5
EQUIPMENT NUMBER	5656.62

EQUIPMENT	
EQUIPMENT LETTER	"F"
2 BOWER ANCHORS STOCKLESS EACH	9 cwt.
1 STREAM ANCHOR EX. STOCK	3 cwt.
165 FATHOMS 1" STUD CHAIN CABLE	
45 FATHOMS 2 1/2" STEEL STREAM WIRE	
75 FATHOMS 2 1/2" STEEL WIRE TOWLINE	
90 FATHOMS 5 1/2" MANILA HAWSER	

**OWNERS' REQUIREMENTS OVER LLOYD'S**  
FRAMES IN WAY OF HOLD AND MOTOR ROOM  
OF BULB ANGLE SECTION.  
MARGIN PLATE VERTICAL ANGLES 5" x 5" SINGLE.  
FIVE KEELSONS IN WAY OF SINGLE BOTTOM.  
NO RIVET LESS THAN 3/4" EXCEPT IN CASINGS AND  
HOUSES.

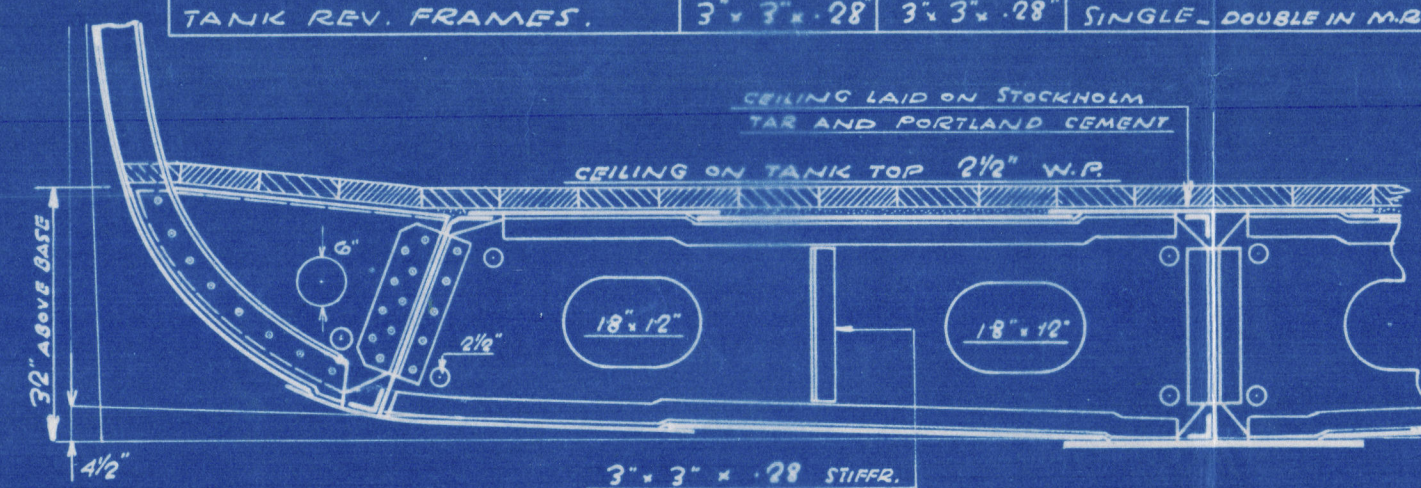
WHEREVER 3/4" RIVETS HAVE BEEN USED THE  
PLATES OF THE ANGLES CONNECTED HAVE  
BEEN 3".



FLAT

## DOUBLE BOTTOM

	HOLD	MOTOR RM.	REMARKS
CENTRE GIRDER	24	28 1/2	28 1/2" DEEP ABOVE BASE
" KEEL ANGLE	2 1/2" x 3" x .30		SINGLE
" TOP ANGLE	2 1/2" x 3" x .30		SINGLE
" VERT. ANGLE	2 1/2" x 2 1/2" x .28		SINGLE
FLOORS	.28	.28	SOLID THROUGHOUT, D.T.F. .30
INNER BOTTOM PLATING	.28	.40	SEAMS DR. IN MOTOR RM.
MARGIN PLATE	.30		RULE DEPTH 1 1/2"
" SHELL ANGLE	3" x 3" x .32		SINGLE
MARGIN VERT. ANGLE 'OUT'	5" x 5" x .38		SINGLE 9-3/4" RIV.
" 'IN'	5" x 3" x .30		3" PLATE TO FLOOR
TANK WING BRACKETS	.30		22" ABOVE BASE
TANK FRAMES	3" x 3" x .28	3" x 3" x .28	SINGLE
TANK REV. FRAMES	3" x 3" x .28	3" x 3" x .28	SINGLE DOUBLE IN M.B.



## SECTION THRO' DOUBLE BOTTOM

IN WAY OF NO. 2 HOLD

	FORECASTLE DECK	BRIDGE DECK	POOP DECK
HEIGHT BEAM TO BEAM	6'-9"	6'-9"	7'-0"
ROUND OF BEAM	6" IN 24'-0"	6" IN 24'-0"	6" IN 24'-0"
BEAMS ALTERNATE FRT.	5' x 3" x .34 A	5' x 3" x .34 A	5' x 3" x .34 A
CARLINGS	✓	✓	✓
BEAM KNEES	15' x 12' x .34	15' x 12' x .34	15' x 12' x .34
SIDE PLATING	.24 - .34	.24 - .34	.24 - .34
STRINGER PLATE	.26	.36 x .26	.32
STRINGER ANGLE	3' x 3" x .24	3' x 3" x .30	3' x 3" x .30
CUTTER BAR	2' x 38" PLAT.	2' x 38" PLAT.	2' x 38" PLAT.
TIE PLATES	.24 - .30	12' x 24	.20 - .32
WOOD DECK	5' x 2 1/2" OREGON PINE	5' x 2 1/2" OREGON PINE	5' x 2 1/2" OREGON PINE

4 ABOVE PLAT WHICH HAS NO CAMBER.  
5 RUBBER BRAKE  
6 IN WAY OF CARLINGS AND 4 1/2" BEAMS  
7 EXPLODED PORTION OF POOP DECK 22"

BRACKETS 34'-15" DEEP  
DO. IN WAY OF FUNNEL 40' x 3' 6" DEEP

CASING TOP BEAMS IN WAY  
OF FUNNEL 6' x 3' x .40 B.A.  
6' x 3' x .40 B.A.

3 HATCH COAMINGS PLATE FRT.  
12' x 40" BULB PLATE  
DECK ANGLE 5' x 1 1/2" x .40  
2' x 3' x .38 TO COAMING

4' x 2 1/2" x .32 B.A. PLAT.  
EVERY 3RD. BEAM  
5' x 5' x .38 TO DECK

5' x 7 1/2" RUBBER  
45' FWD. PART OF B.

6' OUT.  
26 - .30  
60-40 AT BREAK FORD.  
50 AT BREAK ART.

7' x 15" RUBBER  
30' ART. x 35' FORD. OF B.

8' OUT. IN  
38 - .30

9' x 15" RUBBER  
30' ART. x 35' FORD. OF B.

10' x 15" RUBBER  
30' ART. x 35' FORD. OF B.

11' x 15" RUBBER  
30' ART. x 35' FORD. OF B.

12' x 15" RUBBER  
30' ART. x 35' FORD. OF B.

13' x 15" RUBBER  
30' ART. x 35' FORD. OF B.

14' x 15" RUBBER  
30' ART. x 35' FORD. OF B.

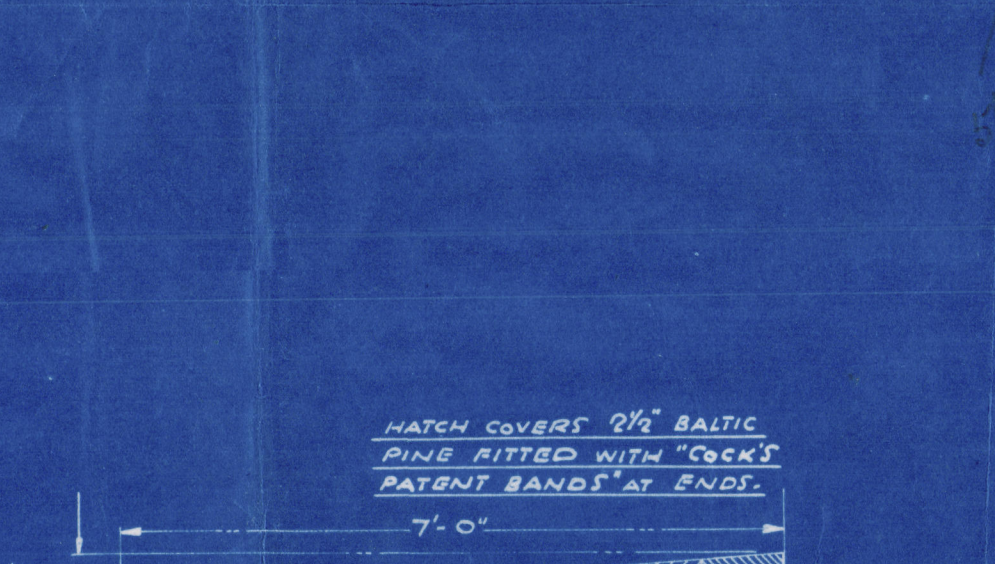
15' x 15" RUBBER  
30' ART. x 35' FORD. OF B.

16' x 15" RUBBER  
30' ART. x 35' FORD. OF B.

17' x 15" RUBBER  
30' ART. x 35' FORD. OF B.

18' x 15" RUBBER  
30' ART. x 35' FORD. OF B.

19' x 15" RUBBER  
30' ART. x 35' FORD. OF B.



2 HATCH COAMINGS PLATE FRT.  
12' x 40" BULB PLATE  
DECK ANGLE 5' x 1 1/2" x .40  
2' x 3' x .38 TO COAMING

4' x 2 1/2" x .32 B.A. PLAT.  
EVERY 3RD. BEAM  
5' x 5' x .38 TO DECK

5' x 7 1/2" RUBBER  
45' FWD. PART OF B.

6' OUT.  
26 - .30  
60-40 AT BREAK FORD.  
50 AT BREAK ART.

7' x 15" RUBBER  
30' ART. x 35' FORD. OF B.

8' OUT. IN  
38 - .30

9' x 15" RUBBER  
30' ART. x 35' FORD. OF B.

10' x 15" RUBBER  
30' ART. x 35' FORD. OF B.

11' x 15" RUBBER  
30' ART. x 35' FORD. OF B.

12' x 15" RUBBER  
30' ART. x 35' FORD. OF B.

13' x 15" RUBBER  
30' ART. x 35' FORD. OF B.

14' x 15" RUBBER  
30' ART. x 35' FORD. OF B.

15' x 15" RUBBER  
30' ART. x 35' FORD. OF B.

16' x 15" RUBBER  
30' ART. x 35' FORD. OF B.

17' x 15" RUBBER  
30' ART. x 35' FORD. OF B.

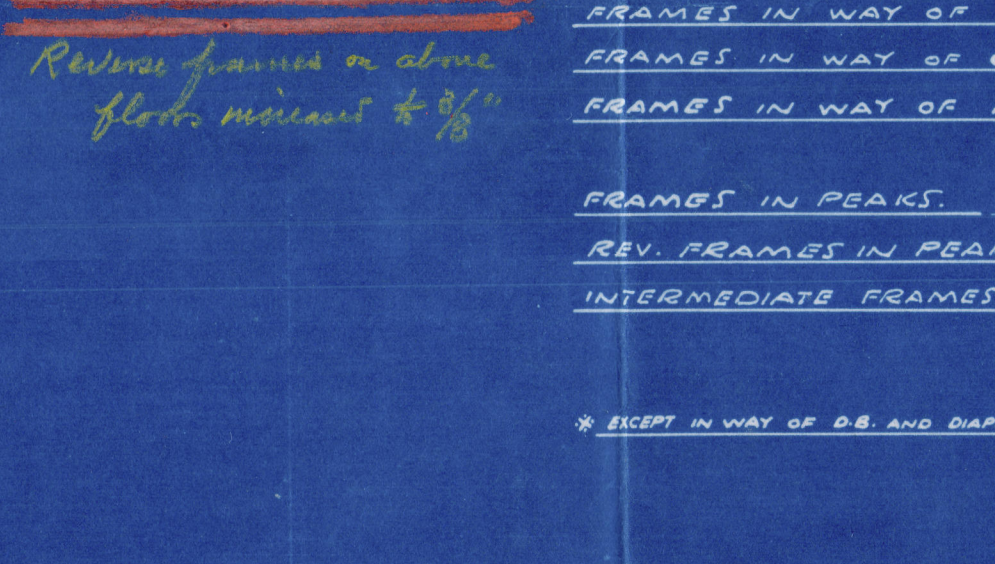
18' x 15" RUBBER  
30' ART. x 35' FORD. OF B.

19' x 15" RUBBER  
30' ART. x 35' FORD. OF B.

20' x 15" RUBBER  
30' ART. x 35' FORD. OF B.

21' x 15" RUBBER  
30' ART. x 35' FORD. OF B.

22' x 15" RUBBER  
30' ART. x 35' FORD. OF B.



2 HATCH COAMINGS PLATE FRT.  
12' x 40" BULB PLATE  
DECK ANGLE 5' x 1 1/2" x .40  
2' x 3' x .38 TO COAMING

4' x 2 1/2" x .32 B.A. PLAT.  
EVERY 3RD. BEAM  
5' x 5' x .38 TO DECK

5' x 7 1/2" RUBBER  
45' FWD. PART OF B.

6' OUT.  
26 - .30  
60-40 AT BREAK FORD.  
50 AT BREAK ART.

7' x 15" RUBBER  
30' ART. x 35' FORD. OF B.

8' OUT. IN  
38 - .30

9' x 15" RUBBER  
30' ART. x 35' FORD. OF B.

10' x 15" RUBBER  
30' ART. x 35' FORD. OF B.

11' x 15" RUBBER  
30' ART. x 35' FORD. OF B.

12' x 15" RUBBER  
30' ART. x 35' FORD. OF B.

13' x 15" RUBBER  
30' ART. x 35' FORD. OF B.

14' x 15" RUBBER  
30' ART. x 35' FORD. OF B.

15' x 15" RUBBER  
30' ART. x 35' FORD. OF B.

16' x 15" RUBBER  
30' ART. x 35' FORD. OF B.

17' x 15" RUBBER  
30' ART. x 35' FORD. OF B.

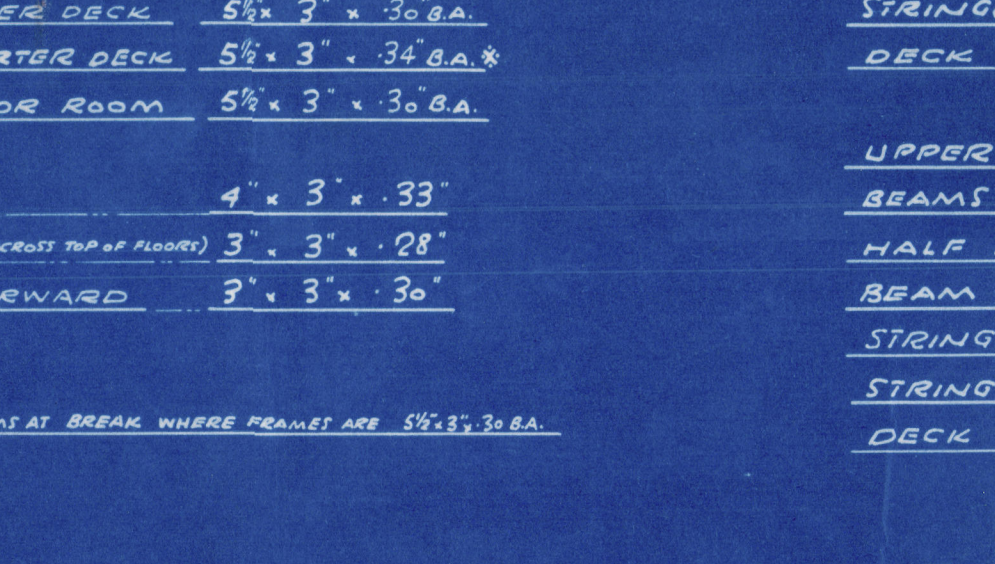
18' x 15" RUBBER  
30' ART. x 35' FORD. OF B.

19' x 15" RUBBER  
30' ART. x 35' FORD. OF B.

20' x 15" RUBBER  
30' ART. x 35' FORD. OF B.

21' x 15" RUBBER  
30' ART. x 35' FORD. OF B.

22' x 15" RUBBER  
30' ART. x 35' FORD. OF B.



2 HATCH COAMINGS PLATE FRT.  
12' x 40" BULB PLATE  
DECK ANGLE 5' x 1 1/2" x .40  
2' x 3' x .38 TO COAMING

4' x 2 1/2" x .32 B.A. PLAT.  
EVERY 3RD. BEAM  
5' x 5' x .38 TO DECK

5' x 7 1/2" RUBBER  
45' FWD. PART OF B.

6' OUT.  
26 - .30  
60-40 AT BREAK FORD.  
50 AT BREAK ART.

7' x 15" RUBBER  
30' ART. x 35' FORD. OF B.

8' OUT. IN  
38 - .30

9' x 15" RUBBER  
30' ART. x 35' FORD. OF B.

10' x 15" RUBBER  
30' ART. x 35' FORD. OF B.

11' x 15" RUBBER  
30' ART. x 35' FORD. OF B.

12' x 15" RUBBER  
30' ART. x 35' FORD. OF B.

13' x 15" RUBBER  
30' ART. x 35' FORD. OF B.

14' x 15" RUBBER  
30' ART. x 35' FORD. OF B.

15' x 15" RUBBER  
30' ART. x 35' FORD. OF B.

16' x 15" RUBBER  
30' ART. x 35' FORD. OF B.

17' x 15" RUBBER  
30' ART. x 35' FORD. OF B.

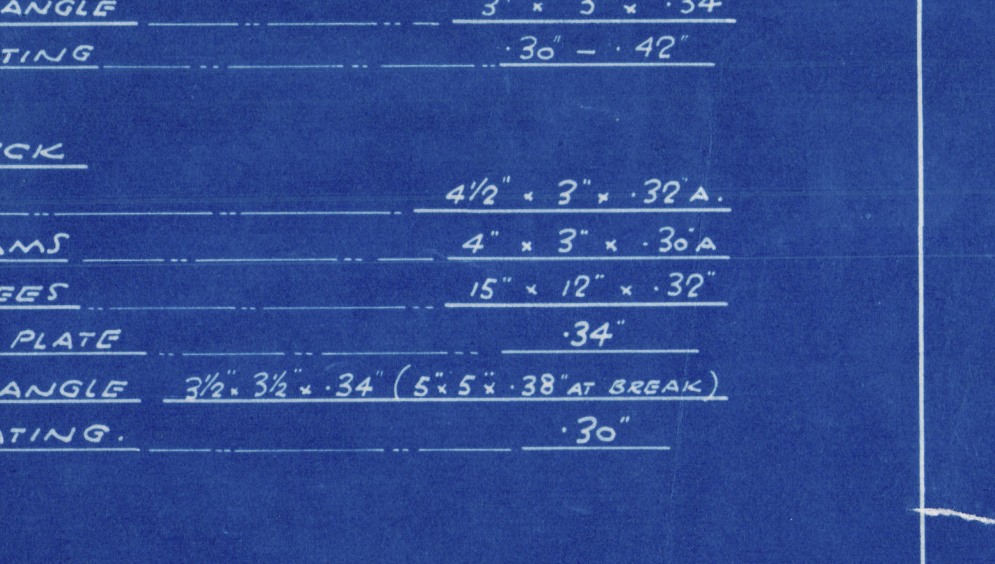
18' x 15" RUBBER  
30' ART. x 35' FORD. OF B.

19' x 15" RUBBER  
30' ART. x 35' FORD. OF B.

20' x 15" RUBBER  
30' ART. x 35' FORD. OF B.

21' x 15" RUBBER  
30' ART. x 35' FORD. OF B.

22' x 15" RUBBER  
30' ART. x 35' FORD. OF B.



2 HATCH COAMINGS PLATE FRT.  
12' x 40" BULB PLATE  
DECK ANGLE 5' x 1 1/2" x .40  
2' x 3' x .38 TO COAMING

4' x 2 1/2" x .32 B.A. PLAT.  
EVERY 3RD. BEAM  
5' x 5' x .38 TO DECK

5' x 7 1/2" RUBBER  
45' FWD. PART OF B.

6' OUT.  
26 - .30  
60-40 AT BREAK FORD.  
50 AT BREAK ART.

7' x 15" RUBBER  
30' ART. x 35' FORD. OF B.

8' OUT. IN  
38 - .30

9' x 15" RUBBER  
30' ART. x 35' FORD. OF B.

10' x 15" RUBBER  
30' ART. x 35' FORD. OF B.

11' x 15" RUBBER  
30' ART. x 35' FORD. OF B.

12' x 15" RUBBER  
30' ART. x 35' FORD. OF B.

13' x 15" RUBBER  
30' ART. x 35' FORD. OF B.

14' x 15" RUBBER  
30' ART. x 35' FORD. OF B.

15' x 15" RUBBER  
30' ART. x 35' FORD. OF B.

16' x 15" RUBBER  
30' ART. x 35' FORD. OF B.

17' x 15" RUBBER  
30' ART. x 35' FORD. OF B.

18' x 15" RUBBER  
30' ART. x 35' FORD. OF B.

19' x 15" RUBBER  
30' ART. x 35' FORD. OF B.

20' x 15" RUBBER  
30' ART. x 35' FORD. OF B.

21' x 15" RUBBER  
30' ART. x 35' FORD. OF B.

22' x 15" RUBBER  
30' ART. x 35' FORD. OF B.

23' x 15" RUBBER  
30' ART. x 35' FORD. OF B.

24' x 15" RUBBER  
30' ART. x 35' FORD. OF B.

25' x 15" RUBBER  
30' ART. x 35' FORD. OF B.

26' x 15" RUBBER  
30' ART. x 35' FORD. OF B.

27' x 15" RUBBER  
30' ART. x 35' FORD. OF B.

28' x 15" RUBBER  
30' ART. x 35' FORD. OF B.

29' x 15" RUBBER  
30' ART. x 35' FORD. OF B.

30' x 15" RUBBER  
30' ART. x 35' FORD. OF B.

31' x 15" RUBBER  
30' ART. x 35' FORD. OF B.

32' x 15" RUBBER  
30' ART. x 35' FORD. OF B.

33' x 15" RUBBER  
30' ART. x 35' FORD. OF B.

34' x 15" RUBBER  
30' ART. x 35' FORD. OF B.

35' x 15" RUBBER  
30' ART. x 35' FORD. OF B.

36' x 15" RUBBER  
30' ART. x 35' FORD. OF B.

37' x 15" RUBBER  
30' ART. x 35' FORD. OF B.

38' x 15" RUBBER  
30' ART. x 35' FORD. OF B.

39' x 15" RUBBER  
30' ART. x 35' FORD. OF B.

40' x 15" RUBBER  
30' ART. x 35' FORD. OF B.

41' x 15" RUBBER  
30' ART. x 35' FORD. OF B.

42' x 15" RUBBER  
30' ART. x 35' FORD. OF B.

43' x 15" RUBBER  
30' ART. x 35' FORD. OF B.

44' x 15" RUBBER  
30' ART. x 35' FORD. OF B.

45' x 15" RUBBER  
30' ART. x 35' FORD. OF B.

46' x 15" RUBBER  
30' ART. x 35' FORD. OF B.

47' x 15" RUBBER  
30' ART. x 35' FORD. OF B.

48' x 15" RUBBER  
30' ART. x 35' FORD. OF B.

49' x 15" RUBBER  
30' ART. x 35' FORD. OF B.

50' x 15" RUBBER  
30' ART. x 35' FORD. OF B.

51' x 15" RUBBER  
30' ART. x 35' FORD. OF B.

52' x 15" RUBBER  
30' ART. x 35' FORD. OF B.

53' x 15" RUBBER  
30' ART. x 35' FORD. OF B.

54' x 15" RUBBER  
30' ART. x 35' FORD. OF B.

55' x 15" RUBBER  
30' ART. x 35' FORD. OF B.

56' x 15" RUBBER  
30' ART. x 35' FORD. OF B.

57' x 15" RUBBER  
30' ART. x 35' FORD. OF B.

58' x 15" RUBBER  
30' ART. x 35' FORD. OF B.



003706-003711-0049

M/V Saint Euzay

Sketch showing  
Additional  
Strengthening

January  
1938

Glasgow Report  
No. 59342

Midship Section © 2020



Lloyd's Register  
Foundation