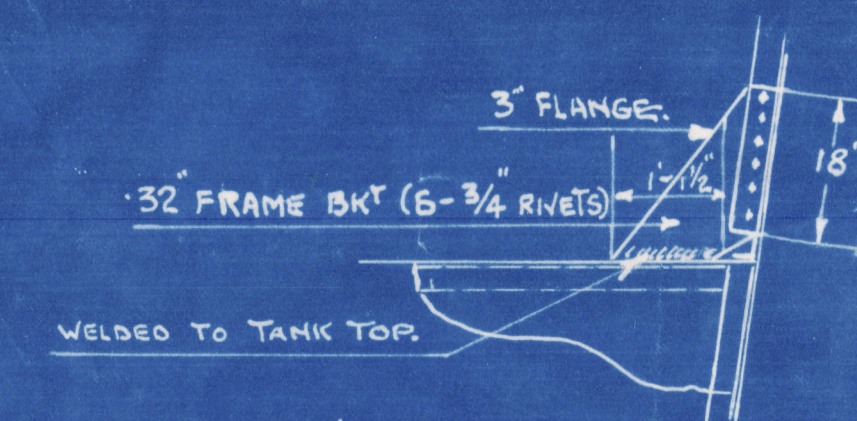
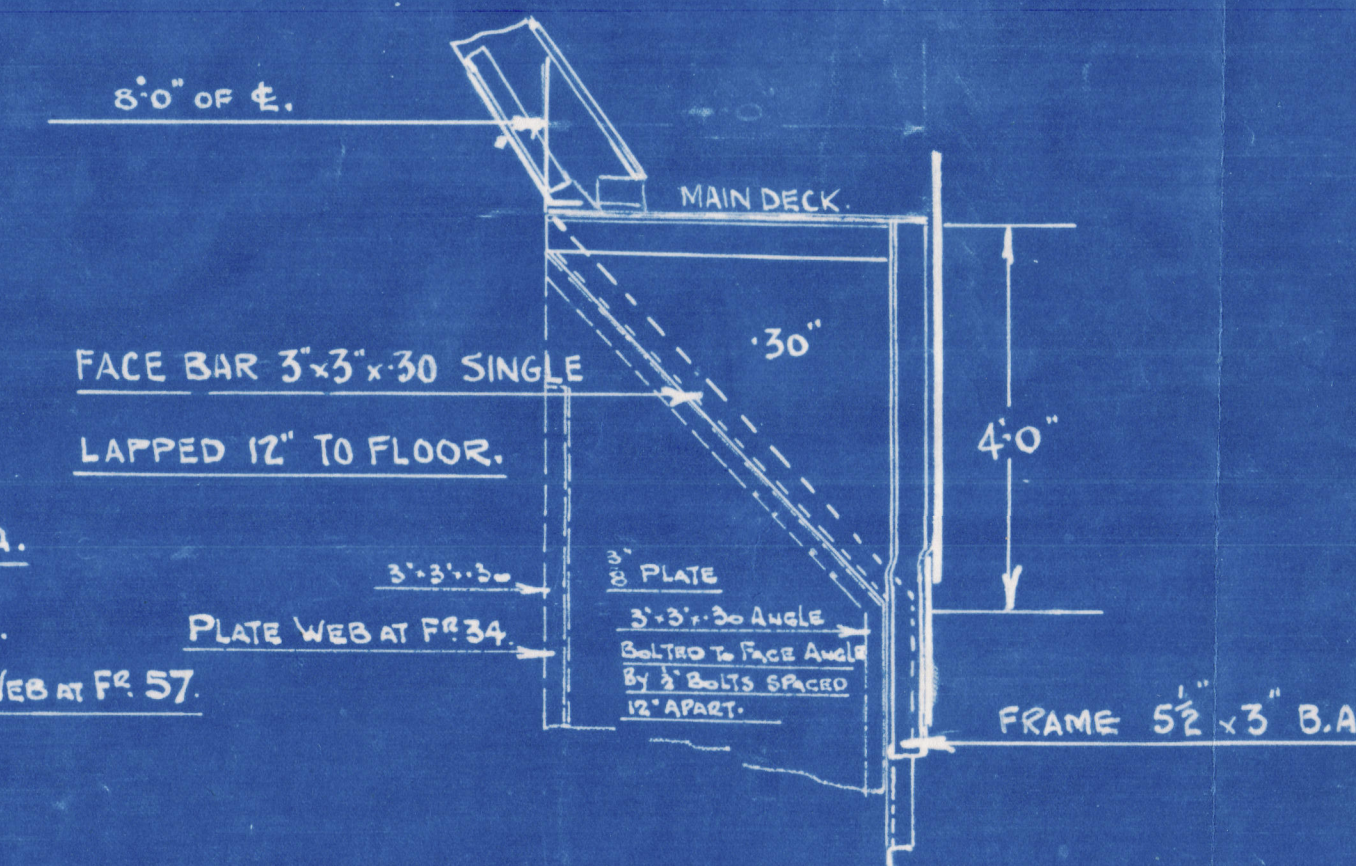


**M.V. No. 427.**

## FRAMING PROFILE.

SCALE  $\frac{1}{4}" = 1$  FOOT.



DETAIL OF FRAME BKT. INWAY OF.  
SLOPED FORE PEAK TANK TOP

4, 6, 8, 10, 12 and 14

FOR PORT SIDE SEE PLAN OF LUBRICATING OIL TANK.

DETAIL OF BEAM KNEE.

### DETAIL OF DEEP BRACKET



14

Ailsa S.B. Co. Iron  
Framing Profile  
(as built)

No. 427

H27- "Saint Eunan"

GLASGOW REPORT No. 59120

*Wal.*



© 2020

Lloyd's Register  
Foundation

003706-003711-0003