

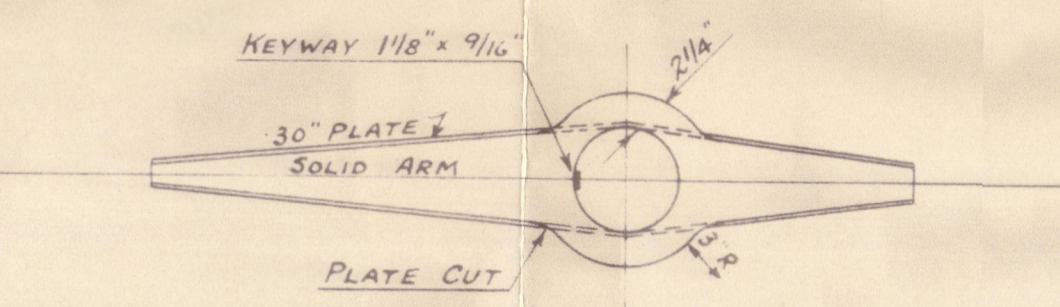
— M.V. NO. 427. —
— STERNFRAME & RUDDER. —

SCALE :- 1" = 1 FOOT.

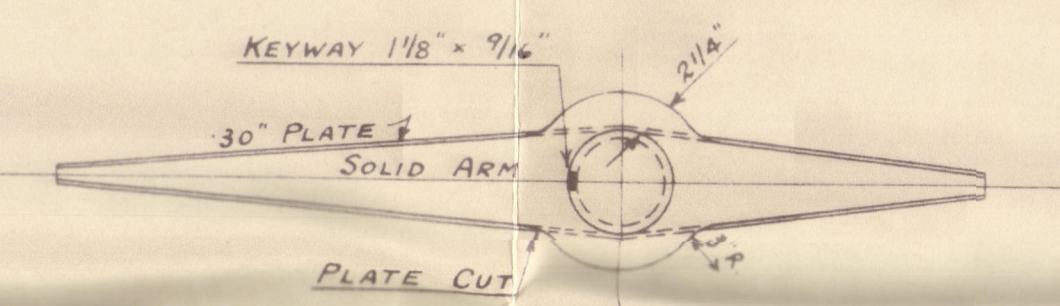
TO BE OF BEST FORGED SCRAP IRON TO LLOYD'S TEST.
 RIVETS IN STERNFRAME 1" DIA^R, SPACED 5" APART. 1 1/16" DIA^R HOLES.
 RIVETS ABOVE COUNTER 3/4" DIA^R, SPACED 3 3/4" APART, 1 3/16" DIA^R HOLES.

— LLOYD'S PARTICULARS. —

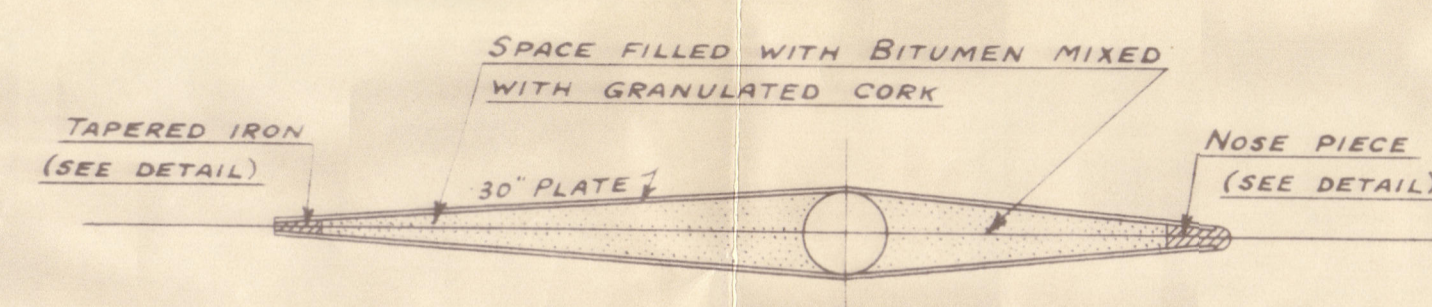
LONGITUDINAL NUMBER (L x D)	1716-00
AREA OF RUDDER (ABAFT CR OF STOCK)	24.42 SQ. FT.
C.G. OF ABOVE AREA.	1.50 FT. AFT
AREA OF RUDDER (FORWARD CR OF STOCK)	16.24 SQ. FT.
C.G. OF ABOVE AREA.	1.00 FT. FORWARD
TOTAL AREA OF RUDDER.	40.66 SQ. FT.
SPEED OF VESSEL NOT EXCEEDING	9 3/4 KNOTS
STERN POST PER RULE	5 3/4 x 3



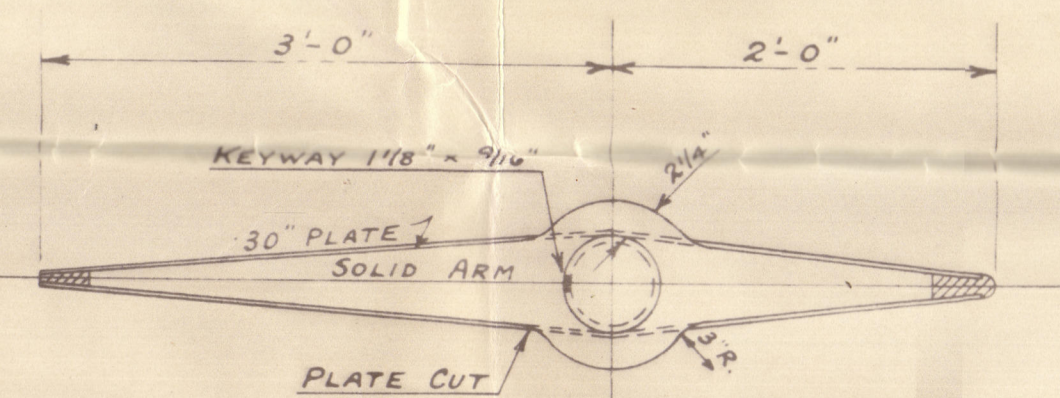
— SECTION AT TOP OF TOP ARM —



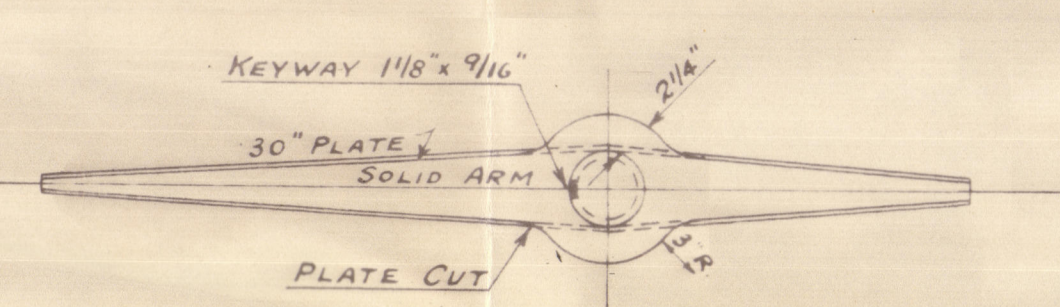
— SECTION AT BOTTOM OF TOP ARM —



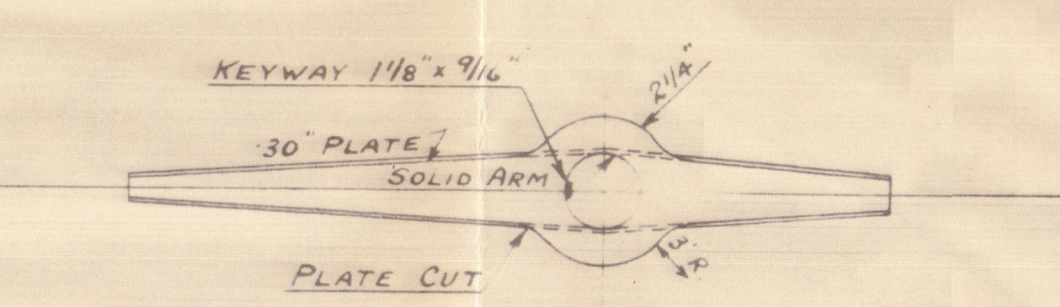
— SECTION THROUGH RUDDER CLEAR OF ARMS —



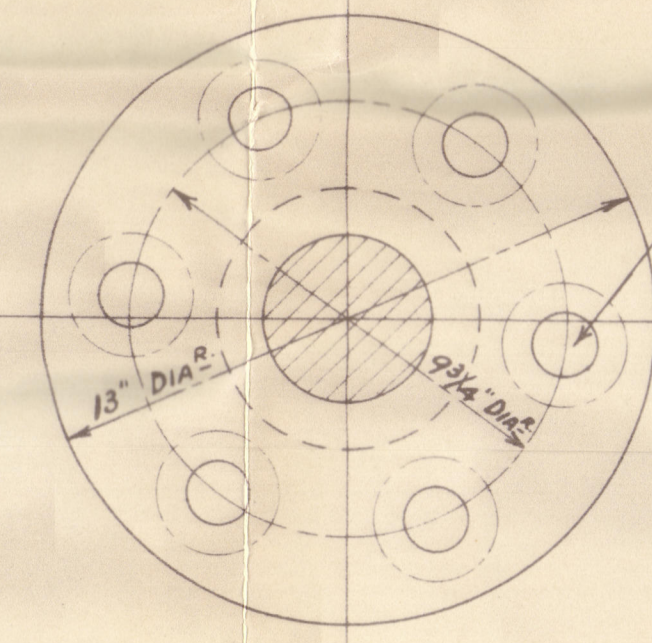
— SECTIONS THROUGH MIDDLE ARMS —



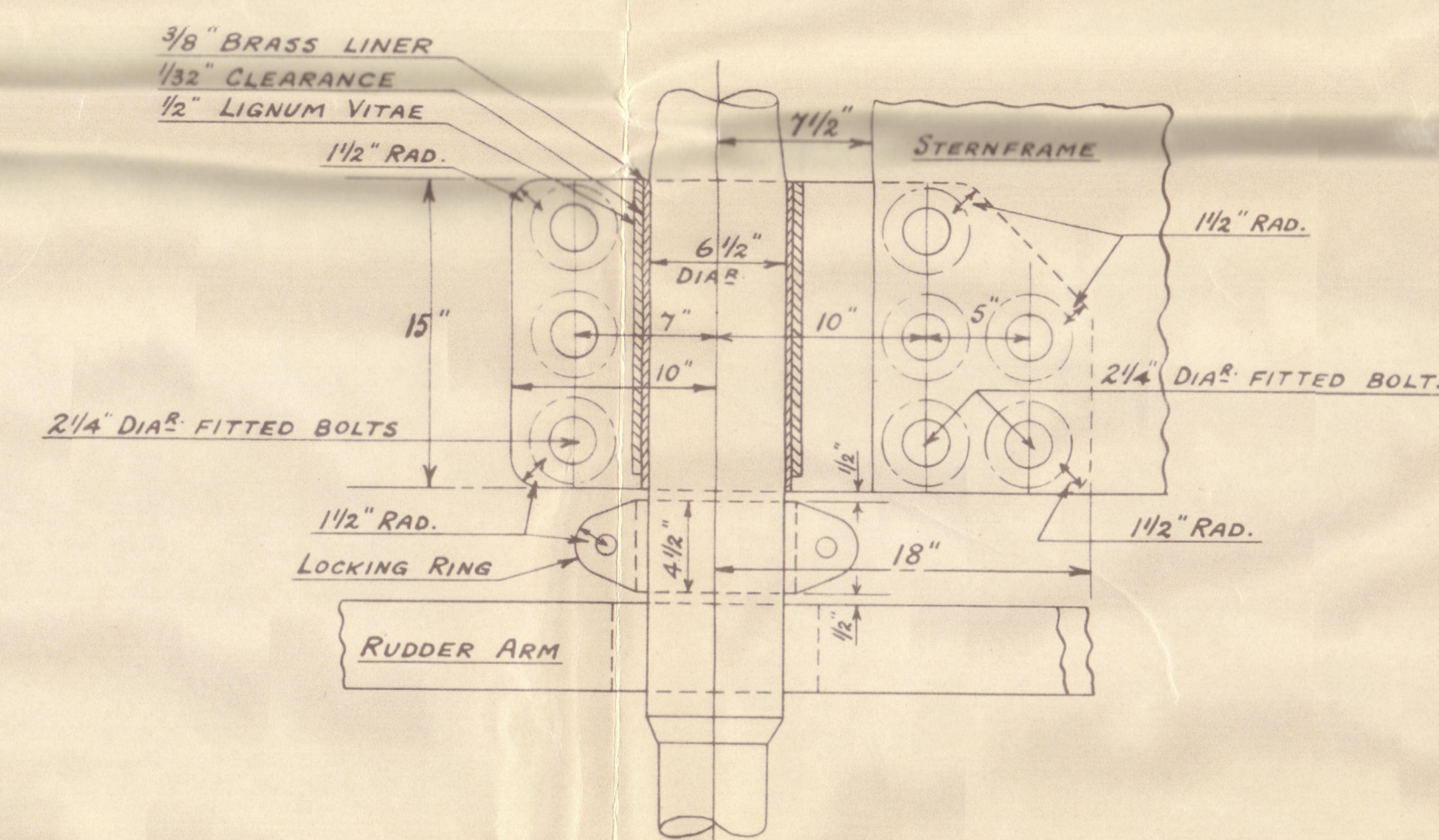
— SECTION AT TOP OF BOTTOM ARM —



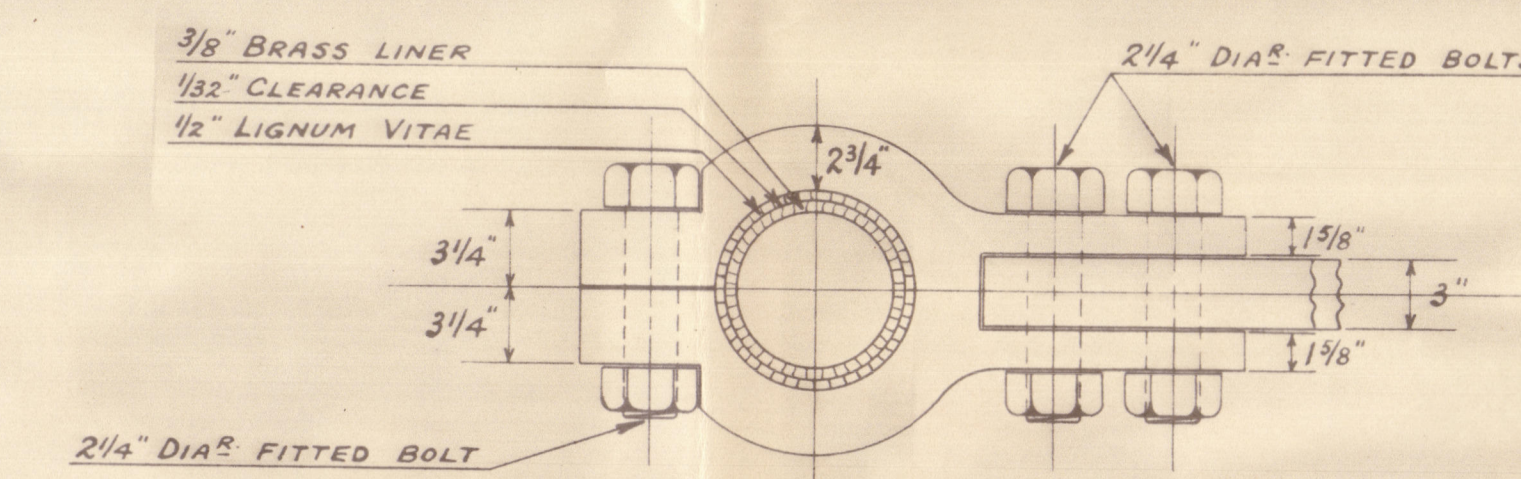
— SECTION AT BOTTOM OF BOTTOM ARM —



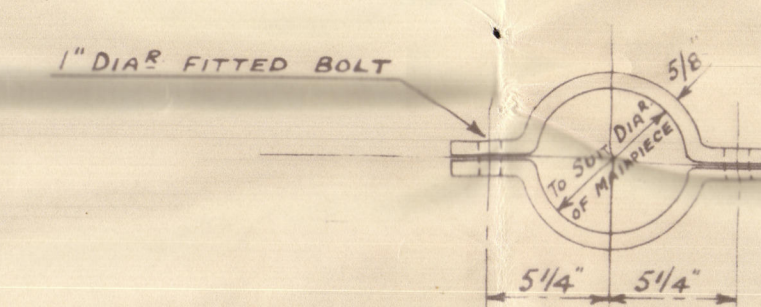
— DETAIL OF COUPLING —
 SCALE :- 3" = 1 FOOT.



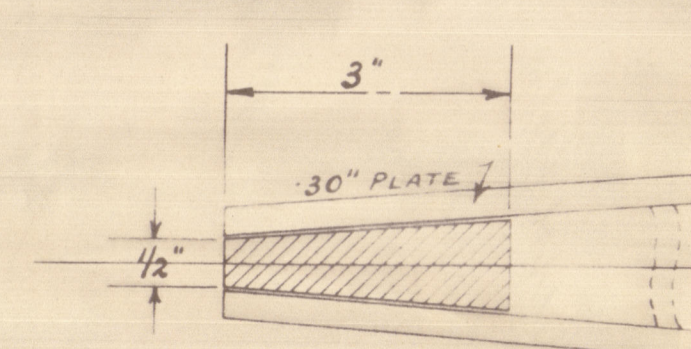
— ELEVATION OF BEARING GUDGEON —



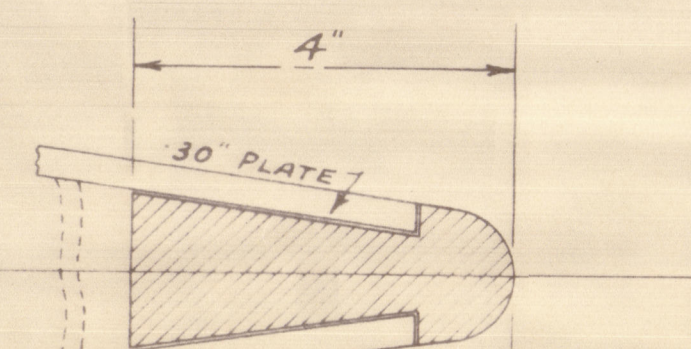
— DETAIL OF BEARING GUDGEON —
 SCALE :- 1 1/2" = 1 FOOT.



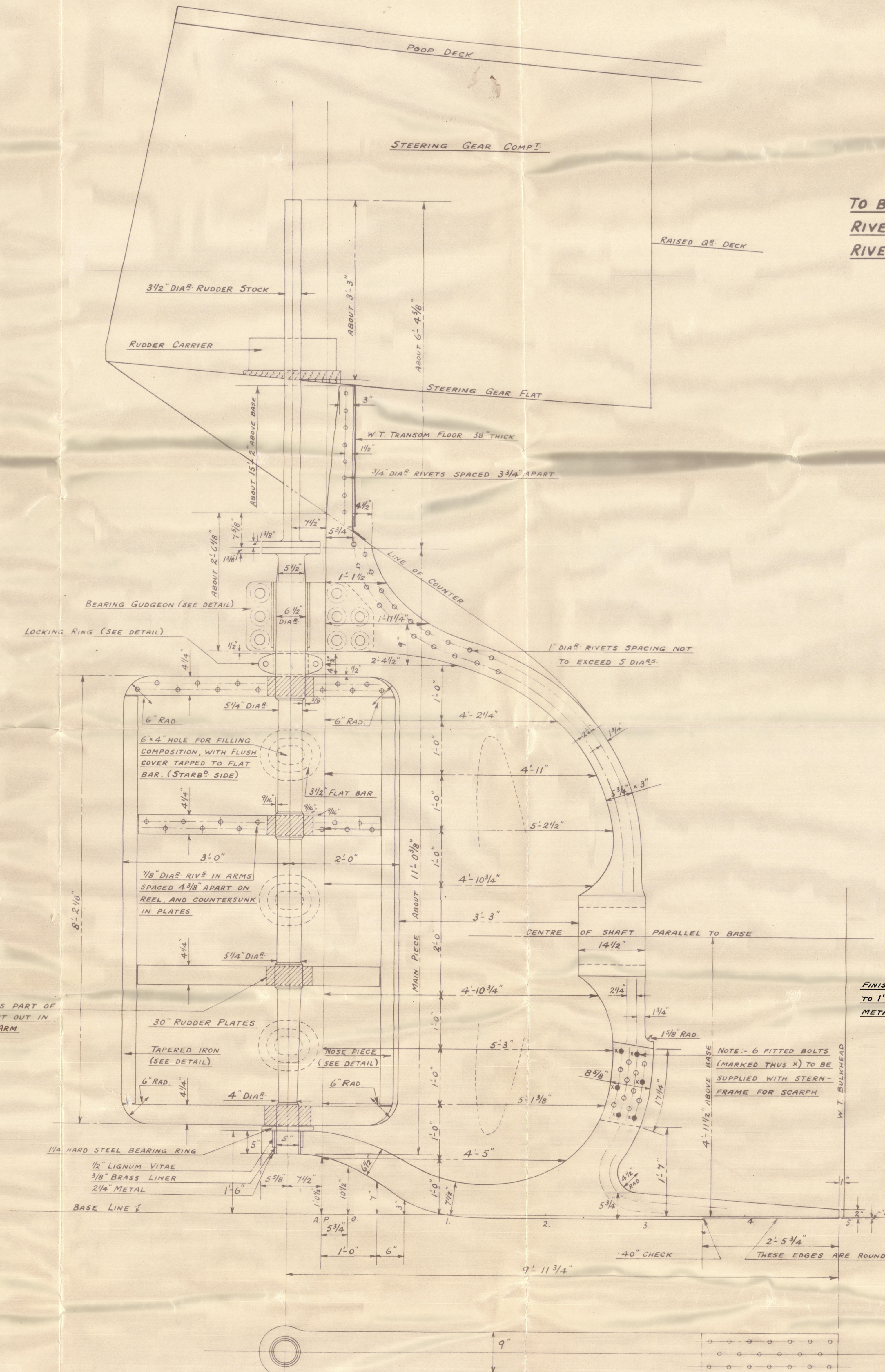
— PLAN VIEW OF LOCKING RING —
 SCALE :- 1 1/2" = 1 FOOT.



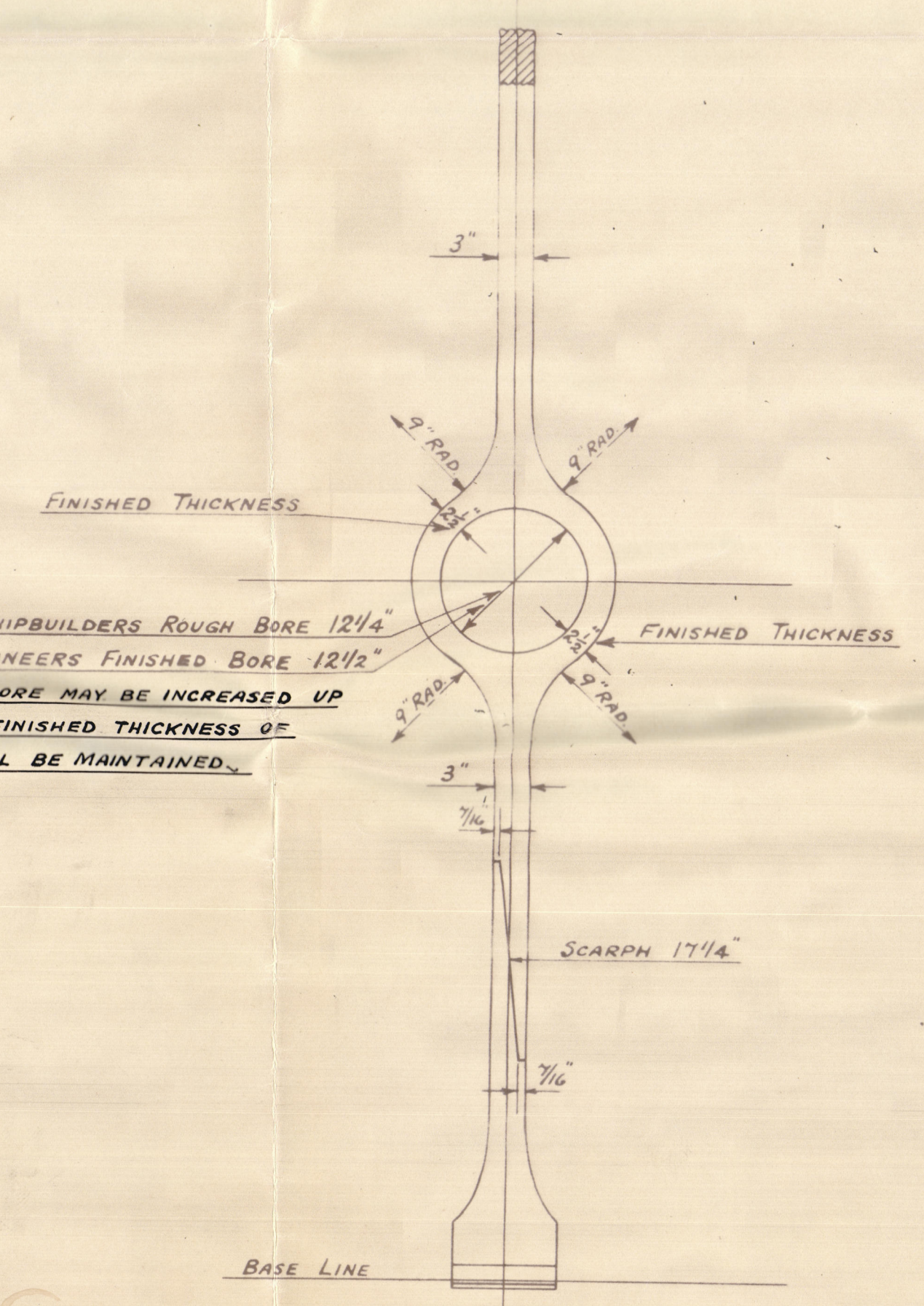
DETAIL OF 3" TAPERED
 IRON AT AFT END OF
 RUDDER (HALF FULL SIZE)



DETAIL OF NOSE PIECE AT
 FORWARD END OF RUDDER.
 HALF FULL SIZE.

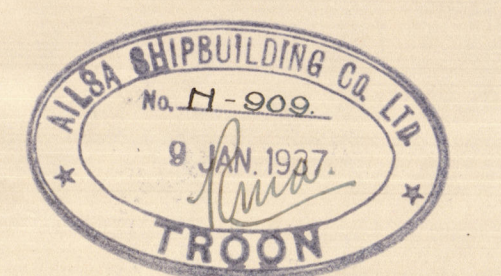


PLAN OF SOLE PIECE



SECTION LOOKING AFT.

APPROVED
 LLOYD'S REGISTER OF SHIPPING
 14.1.37



Merch Cuba 1865 Ad

3

PH24

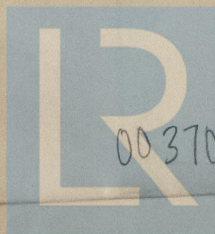
3

Sternframe Rudder

"SAINT EUNAN."

427

GLASGOW REPORT No 59120



© 2020

003706-003711-0001
Lloyd's Register
Foundation